



GREEN LINE EXTENSION PROJECT



massDOT
Massachusetts Department of Transportation



- I. Safety & Introduction
- II. GLX-PMT Update
- III. GLX-C – Construction & Design Update
- IV. Conclusion

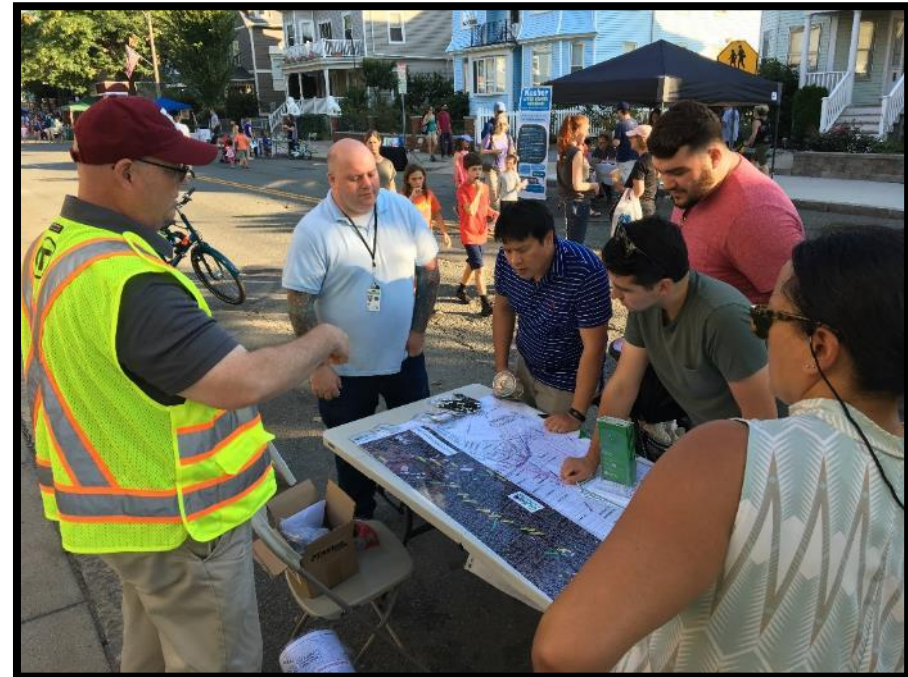
GLX-MBTA Update

Terry McCarthy, MBTA

- **Gilman Square Block Party**
 - Saturday, Sept. 15 on Richdale Ave.



- **SomerStreets Tabling Session On Highland Ave.**
 - Sunday, Sept. 16 between School St. and Lowell



- **GLX Project Public Meeting Hosted By Somerville & Medford**
 - Monday, Sept. 24 at Saint Clement Parish Hall



- **Fluff Festival Tabling Session at Union Square**
 - Saturday, Sept. 22: Fluff Festival, Union Square, 3 – 7 p.m.



- **Ball for Squares**

- Sunday, Sept. 30: Ball Square, Noon to 5:00 p.m.



Station Designs – College Ave. Station



Station Designs – College Ave. Station



Station Designs – College Ave. Station



Retaining and Sound Wall Design

- Examples of existing retaining walls



Retaining and Sound Wall Design

West Side

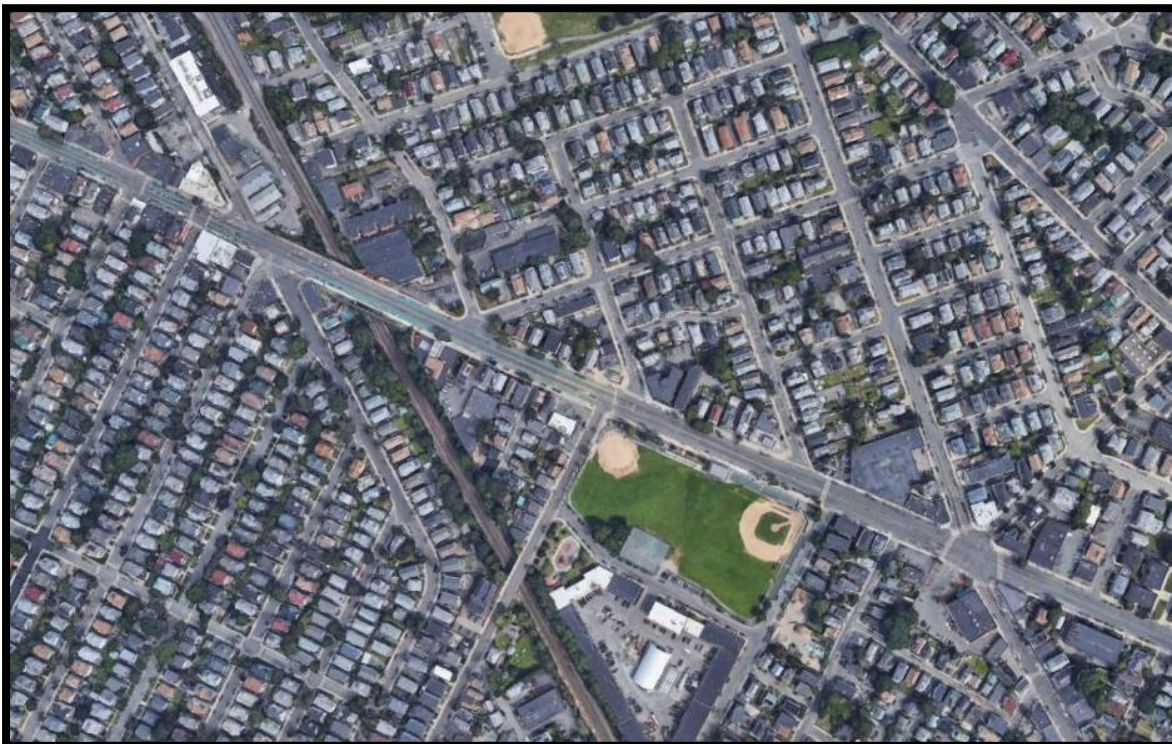
Linear ft. of retaining wall: 14,720 LF
Wall designs complete: Summer 2019
Wall Construction complete: late 2020

East Side

Linear ft. of retaining wall: 3,260 LF
Linear ft. of sound walls: 9,200 LF
Wall designs complete: Winter 2018
Wall Construction complete: late 2019



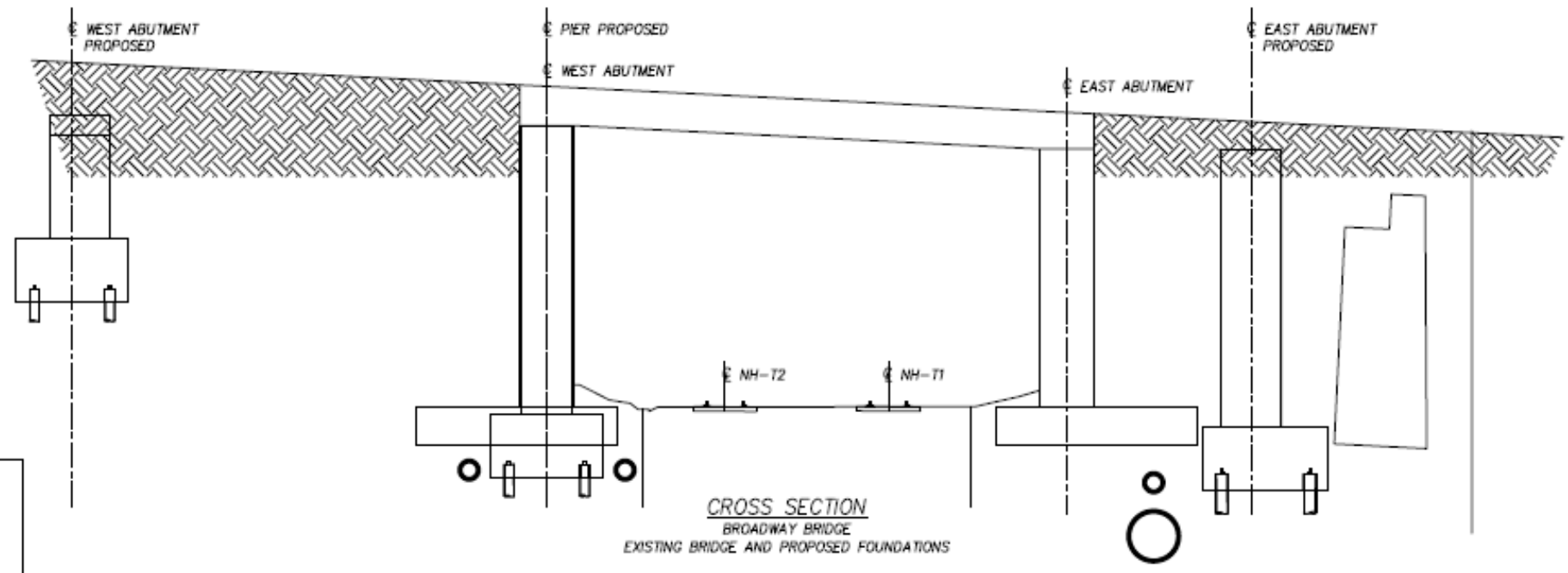
- Bridge closure planned for early 2019



Broadway Bridge

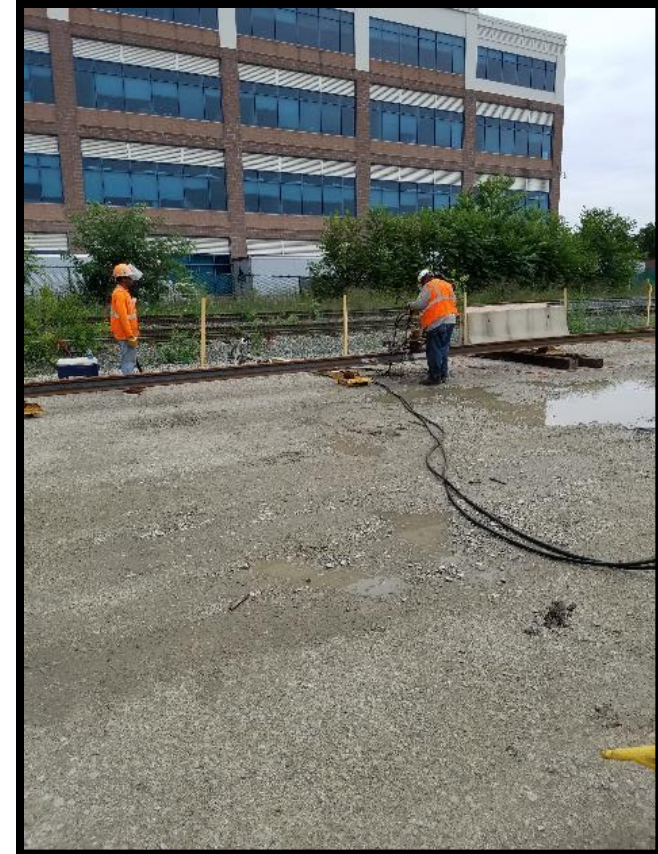
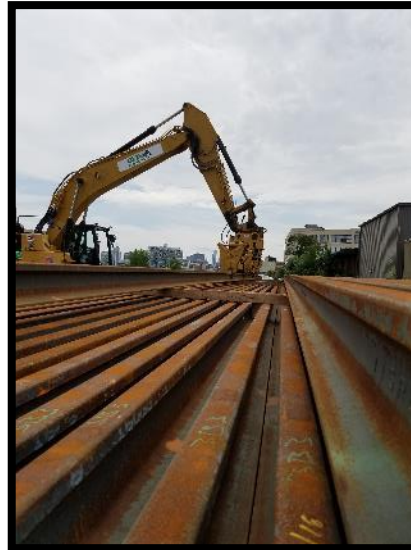
DRAFT

PLAN
BROADWAY BRIDGE
EXISTING BRIDGE AND PROPOSED FOUNDATIONS



Track Shift Update

- 7,500' track placed between Lowell and Washington St. (NH 2 Interim Track)
- 3,000' track between Walnut St. and Washington St. (NH 1)
- 5,000 tons of ballast received

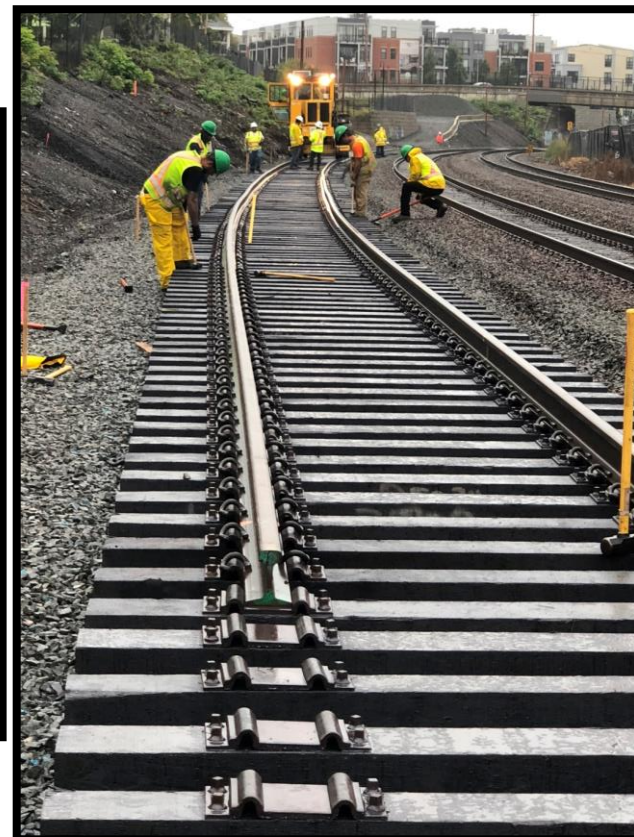
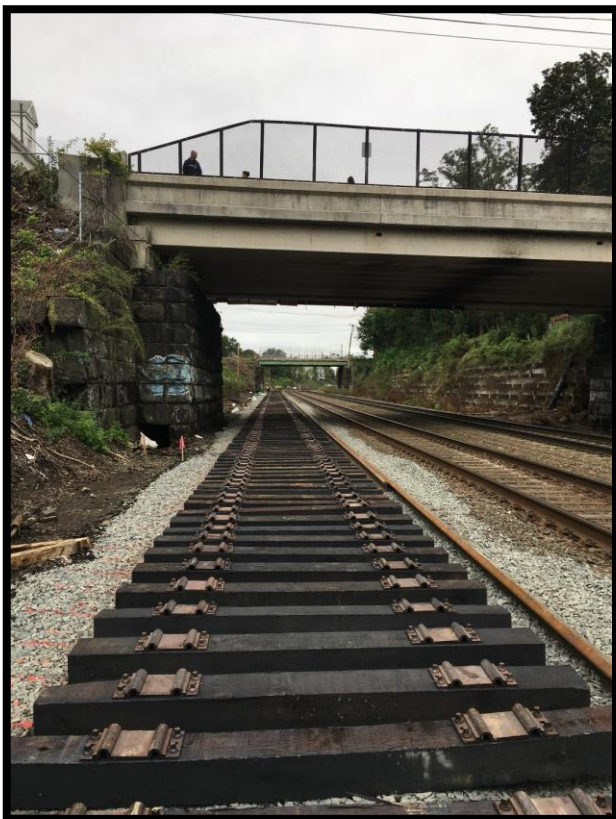


Track Shift Update

- 1st step was to remove separation barrier and create space on west side
- Added swales and drainage
- Graded track bed for new alignment
- Placed ballast and installed track
- Temporarily moving commuter rail onto new lines
- Track shift planned for 3 weekends beginning mid-October
- Shift allows work to progress on east side of alignment



Track Shift Update



Track Shift Update



- **Homans Building Demolition**

- Targeting late November 2018 including environmental abatement & debris removal
- 3 to 4 Week duration
- Future site of Somerville parking lot and traction power station



- **Homans Building Demolition**
 - Skylight Studios Prepares Silicone Mold of Lion's Head & Surround (Sept. 14)



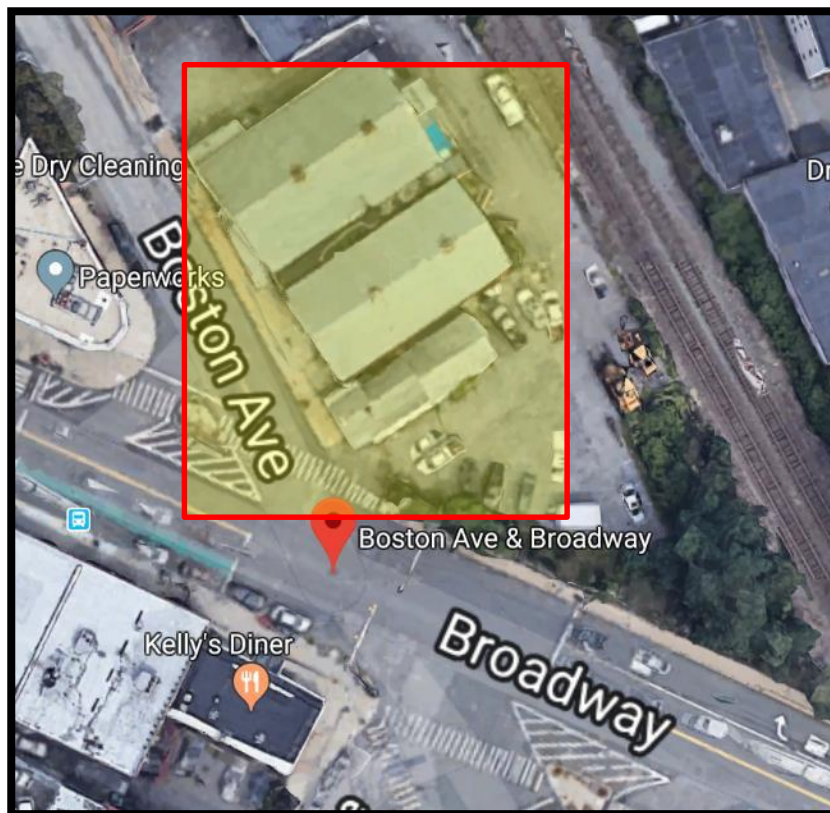
- **Homans Building Demolition**
 - Lion's Head Extraction (Sept. 17 - 25)
 - All elements to be delivered to Somerville



- **Third Ave. Demolition – future Vehicle Maintenance Facility Location**
 - Demolition/abatement target start October 2018



- **Broadway at Boston Ave. Demolition – future Ball Square Station**
 - Demolition/abatement target start December 2018



Discussion

Terry McCarthy, GLXC



GREEN LINE EXTENSION PROJECT



massDOT
Massachusetts Department of Transportation

26



GLX Community Working Group
Monthly Meeting
October 2, 2018