



GREEN LINE EXTENSION PROJECT

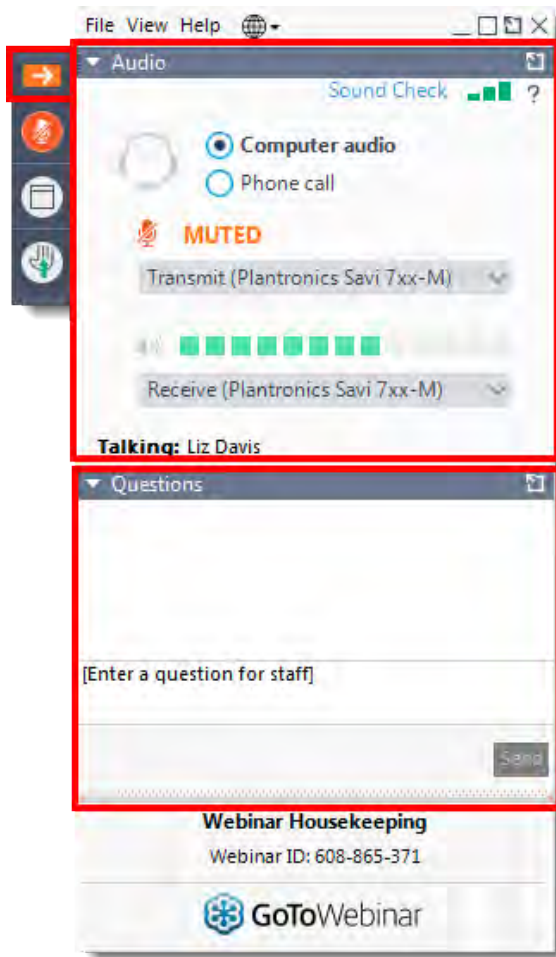


massDOT
Massachusetts Department of Transportation



GLX Community Working Group
Monthly Meeting
June 2, 2020

Go-to-Webinar Housekeeping



Open and close your control panel

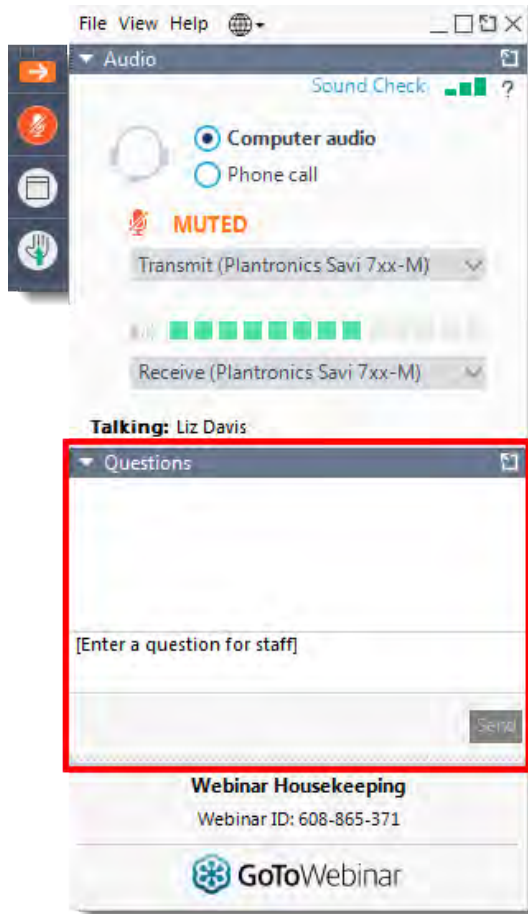
Join audio:

- Choose **Mic & Speakers** to use VoIP
- Choose **Telephone** and dial using the information provided

Submit questions and comments via the Questions panel

You will be automatically be muted and taken off mute for introductions and questions

Go-to-Webinar Housekeeping-Questions



- Please continue to submit your text questions and comments using the Questions panel
- Please raise your hand to be unmuted for verbal questions.

For more information, please contact Erin Reed
ereed@hshassoc.com



Agenda

Welcome & Introduction

Public Meeting Discussion & Lechmere Station Bus Service

- Terry McCarthy, MBTA Deputy Program Mgr., Stakeholder Engagement

Construction Update

- Jeff Wagner, GLXC Public Involvement Manager



GLX Milestones

- Terry McCarthy, MBTA – GLX Deputy Project Manager, Stakeholder Engagement



Recent GLX Project Milestones

- **Lechmere Viaduct Demolition and Replacement Bus Service**
 - Bus service began May 24 & Viaduct demo started in May
- **Washington Street Bridge / Underpass**
 - Single lane & bike/ped access opened on May 31
- **Broadway Bridge**
 - Single lane opening first week of June *

** Schedule subject to change due to potential COVID-19 related impacts*



Lechmere Viaduct Update

- Lechmere Viaduct Bus Replacement Service began Sunday, May 24, 2020
- Viaduct demolition and Station reconstruction and replacement underway



Lechmere Viaduct Update (cont)

- Lechmere Viaduct Bus Replacement Service inbound



Lechmere Viaduct Update (cont 3)

- Lechmere Viaduct Bus Replacement Service Science Park Station



Washington Street Bridge Update

- Washington St. Underpass reopened Sunday, May 31 at 10:30 a.m.



May 21, 2020



May 31, 2020

Washington Street Bridge Update (cont)

- Washington St. Underpass reopened Sunday, May 31 at 10:30 a.m.



Broadway Bridge Update

- A partial opening of the Broadway Bridge is planned by early next week



GLXC Construction Update

➤ Jeff Wagner, GLXC Public Involvement Manager



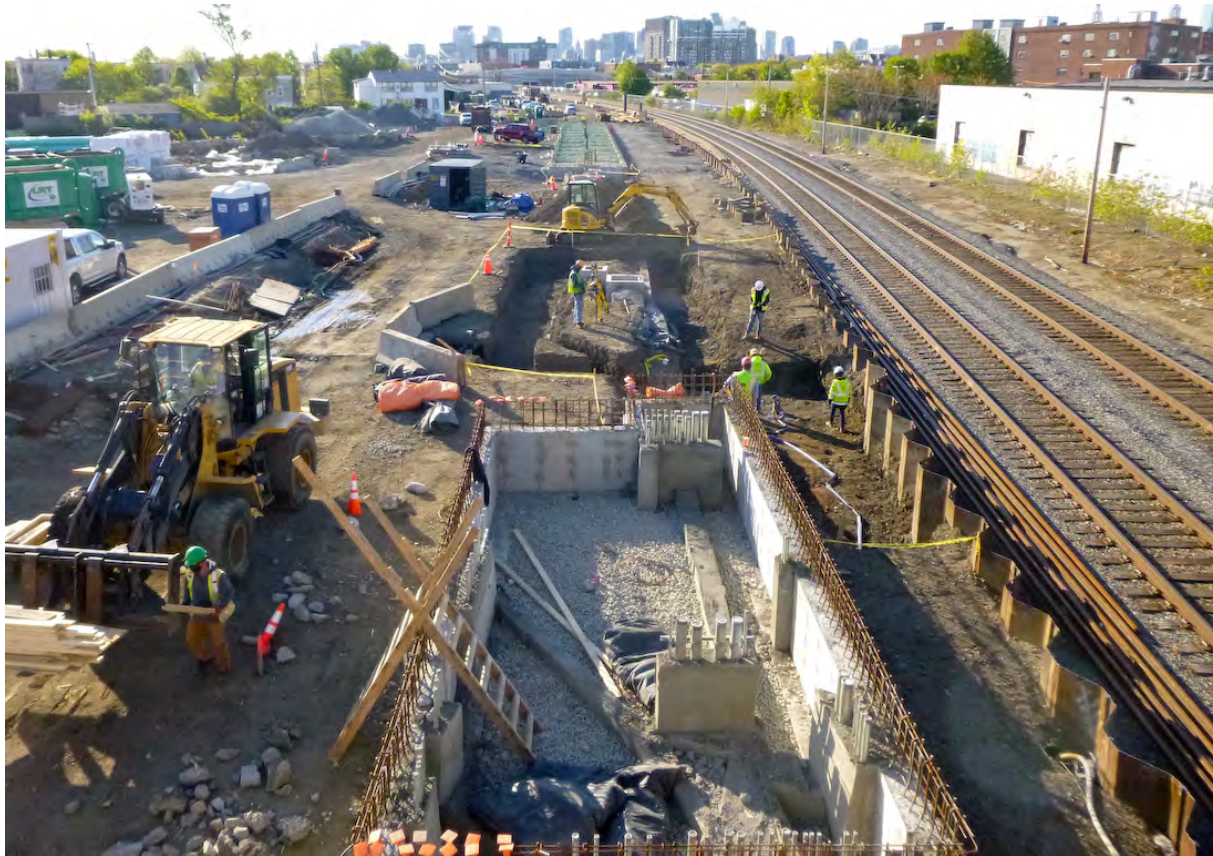
Safety: COVID-19

- In April GLX Constructors Donated 120 N95 respirators to the Cambridge Health Alliance



Union Square Station Area

- Foundation construction continues at future Union Square Station



Lechmere Viaduct Demo



- Discontinuation of trolley service and start of bus service on May 24
- Safely isolating power and taking the Overhead Contact System (OCS) out of service was a major element. Involved coordination by both GLX & Viaduct Project.
- Tracks removed. Ballast now being hauled out. Demolition of old viaduct started in late May and will continue through summer
- Demo work will start at the Gilmore Bridge



Lechmere Area



- Steel placement continues to progress north from Water St.
- Viaduct deck construction advancing near future station



Lechmere Area cont

- Viaduct substructure work continues adjacent to O'Brien Hwy. with steel erection to begin in July once overhead demolition is complete.



Boston Engine Terminal Area



- Deck construction, power traction substation and Community Path foundation work progressing over the Boston Engine Terminal tracks



Vehicle Maintenance Facility



- Transportation Building is on the left and catenary poles are in place
- Significant amount of catenary work underway
- Retaining wall installation continues, while moment slabs being poured to additionally secure wall panels



Vehicle Maintenance Facility con't



- Vehicle Maintenance Facility is taking shape
- Roughly half the framework is in place
- Largest number of construction personnel working in this area



Vehicle Maintenance Facility con't 2



- Transportation building is now fully under roof
- This will be a support facility for the vehicle maintenance operations & staff



East Somerville Station Area



- The East Somerville Station is taking shape



East Somerville Station Area con't



August 2018



May 31, 2020



East Somerville Station Area con't 3



August 2018



May 31, 2020



massDOT
Massachusetts Department of Transportation



Medford St. Bridge Modification



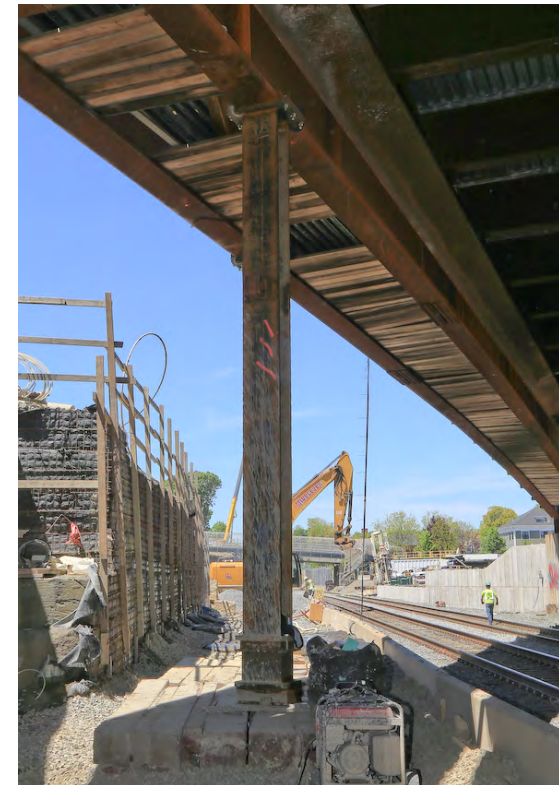
- Retaining wall MW-36.3 H-piles in place south of the Medford St. Bridge
- Foundation drilling for the bridge extension complete. Abutment construction continues.



Medford St. Bridge Modification con't



- Center pier reinforcement continues at track level
- Temporary bridge deck support has been added for stability



Future Gilman Square Station Area



- Drainage, wall work and Traction Power Substation construction continues
- Station construction to start this month



School Street Bridge Modification

- Drilling for the new bridge abutment is now underway



Retaining Wall Construction

- Retaining wall foundation drilling for wall MW-5.5 between School St. and Sycamore underway
- Concrete panels being placed at wall N-7 behind Richdale Ave.



Retaining Wall Construction con't

- H-Piles in place south of Central St. for Retaining Wall MCW-3
- Concrete retaining wall panels place at wall N-9B near Roger's Foam



Retaining Wall Construction con't 3

- Retaining Wall ME-2 (photo on left) behind the Somerville Department of Public Works building just prior to the commuter line track shift
- Significant wall construction (ME-2.2) behind Drain Dr. and Shield Gas Station (right) was completed in advance of the track shift



Commuter Line Track Shift



- Successful commuter line track shift (4 of 4) on May 24
- Tremendous amount of work by all construction disciplines made it possible
- With track fully shifted to the east allowing west side wall construction, drainage and stations to advance



April 2018



May 2020



Ball Square Station Area



March 23, 2019



May 21, 2020

Ball Square Station Area con't

- Traction power substation foundation & utilities work is progressing



Medford/Tufts Station Area

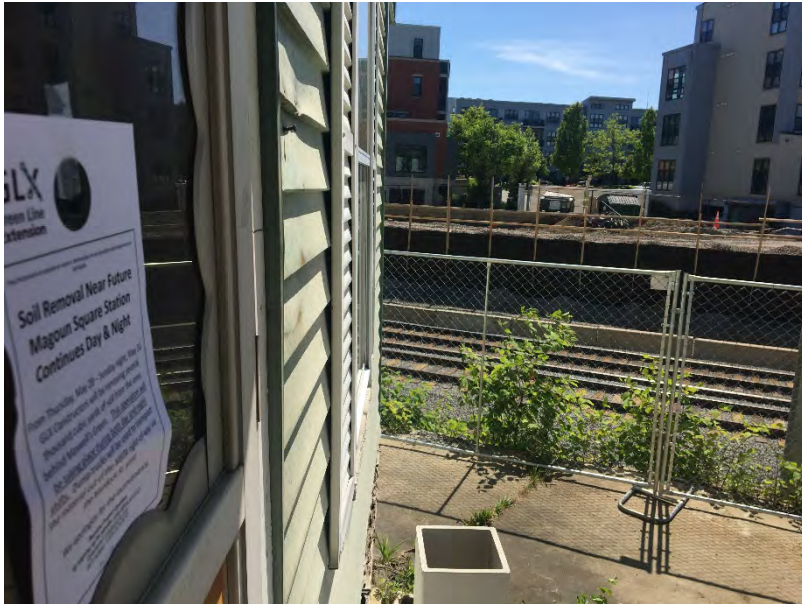


- Foundation drilling for the retaining wall along Boston Ave.
- Awaiting noise wall panels along N-15 near northern terminus



Outreach – Hotline Responses

- **1,315** Inquiries thru Hotline, e-mail or direct contact with outreach staff project to date. 60 contacts received in May.
- **1,185** actions closed out



Community Connection Team



A graphic titled "Keeping us on track we thank you" featuring a photo of four children. The graphic lists the Green Line Extension Constructors (GLX Constructors) and their key support members. The support members include Siefert Associates, Atlantic Coast Dismantling, Broco Oil, United Rentals, The LiRo Group, Colony, GZA, Keller, Aggregate Industries, Consigli, and Algar. The Greater Somerville Homeless Coalition is also featured at the bottom right.

Keeping us on track we thank you

Green Line
Extension Constructors

GLX
CONSTRUCTORS

with support from key members
of the construction team:

SIEFERT ASSOCIATES
Construction & Engineering

ATLANTIC
COAST DISMANTLING

BROCO OIL

United Rentals

The LiRo Group

COLONY

GZA

KELLER

AGGREGATE INDUSTRIES

CONSIGLI
for us

ALGAR
Advanced Polyethylene

Greater Somerville Homeless Coalition
Support Housing Community

www.shcinc.org
1 Davis Square, Somerville,
MA 02144 (t): 617.673.6111

finding everyone a home



Q & A

