



# GREEN LINE EXTENSION PROJECT



**massDOT**  
Massachusetts Department of Transportation



# Agenda

## Welcome & Introduction

## Lechmere March 10, Public Meeting Overview

- Terry McCarthy, GLX – MBTA

## Construction Update

- Randy McSherry, GLXC Construction Manager

## Traction Power Substation Construction

- Nick Hecht, GLXC Systems Construction Manager
- Siva Ancha, GLXC Stations Project Engineer

## Station Art

- Matt Davy, GLX - MBTA



# MBTA Update



***massDOT***  
Massachusetts Department of Transportation





# GLXC Construction Update



***massDOT***  
Massachusetts Department of Transportation





# Union Square Station Area

- Foundation construction continues at future Union Square Station
- Retaining wall construction and sheet pile driving progressing behind GLXC office & Target



# Lechmere Area

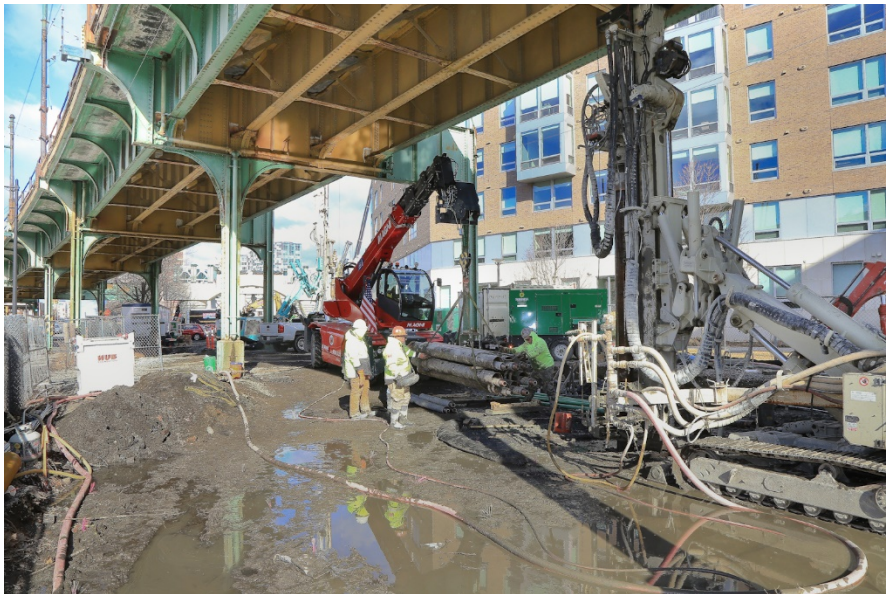
- Steel placement across East St. continues to advance toward Water St.





# Lechmere Area

- Foundation drilling using micropiles continues under the old Lechmere Viaduct





# Boston Engine Terminal Area



- Deck construction progressing over the Boston Engine Terminal tracks



**massDOT**  
Massachusetts Department of Transportation





# Boston Engine Terminal Area con't

- The Red Bridge Traction Power Substation foundation is well underway as is work on a nearby retaining wall.





# Vehicle Maintenance Facility

- Retaining wall work and drainage installation continues
- Foundation work on VMF and Transportation Building underway





# Vehicle Maintenance Facility (Cont)

- Retaining wall work and drainage installation continues
- Foundation work on VMF and Transportation Building underway





# East Somerville Station Area



- Demolition of the Washington St. rail overpass continues as does abutment foundation work for the replacement bridge



# Alignment Video from MPM



**\*Two videos captured by the MPM machine last week were shown to the CWG and will be posted to the project website: <https://www.mass.gov/green-line-extension-project-glx>**





# Ball Square Station Area



- Work on the east & west abutments and center pier on Broadway Bridge is advancing
- The drainage tie in the middle of Granville Ave. nearly complete
- Traction power substation foundation & utilities work is progressing



# Ball Square Station Area (Cont.)

- Work on the east & west abutments and center pier on Broadway Bridge is advancing
- The drainage tie in the middle of Granville Ave. nearly complete
- Traction power substation foundation & utilities work is progressing





# Medford/Tufts Station Area



- Foundation drilling for the retaining wall along Boston Ave. is moving at a steady pace to the north



# Traction Power Substation Update



**GLX**  
CONSTRUCTORS

1. Provide distribution of DC power to LRV's (Light Rail Vehicle)
2. Provide distribution of AC power to ancillary location across Green Line alignment
  - Examples- Stations, Pump Stations and CIH's (Central Instrument Houses)





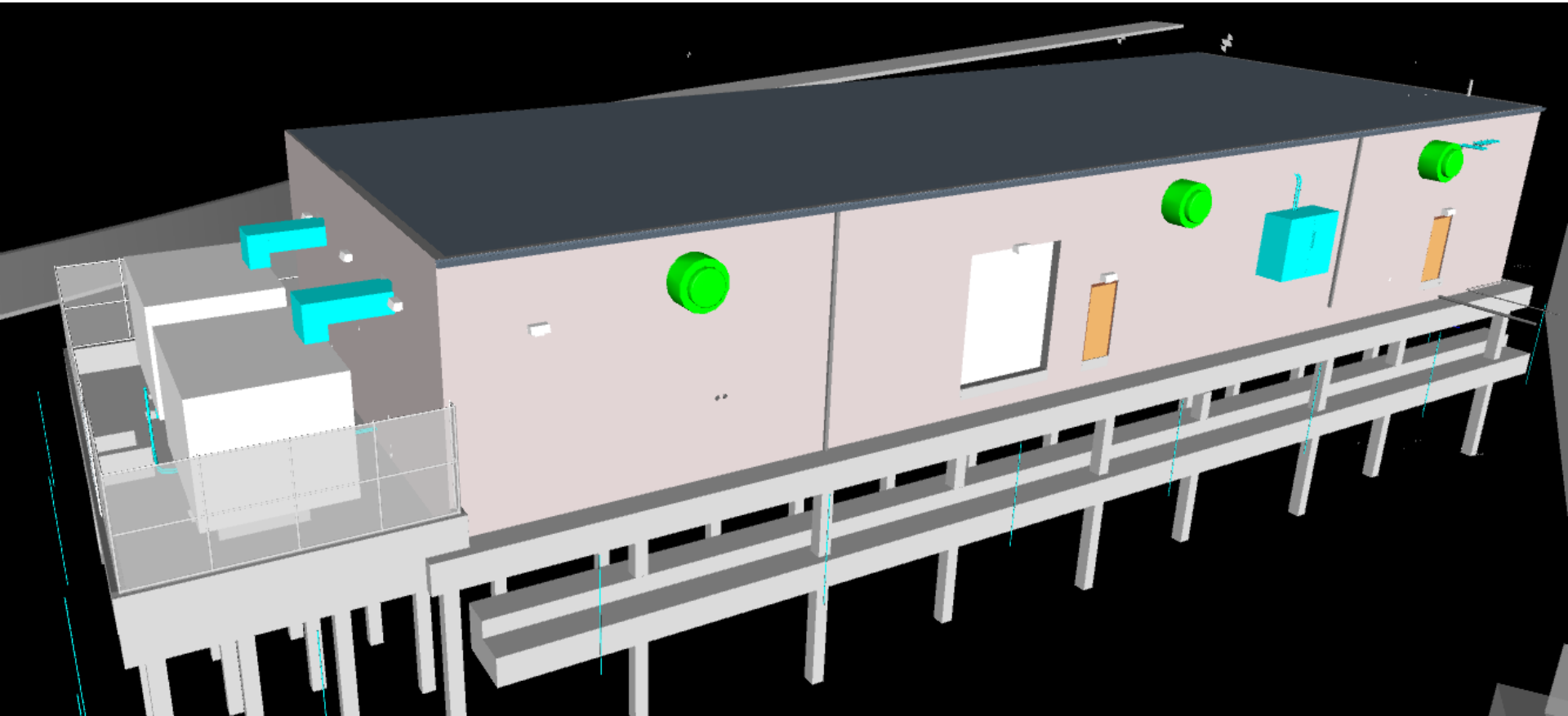
# Traction Power Substation (Con't)

## Red Bridge Traction Power Substation



# Traction Power Substation (Con't 3)

## Red Bridge Traction Power Substation





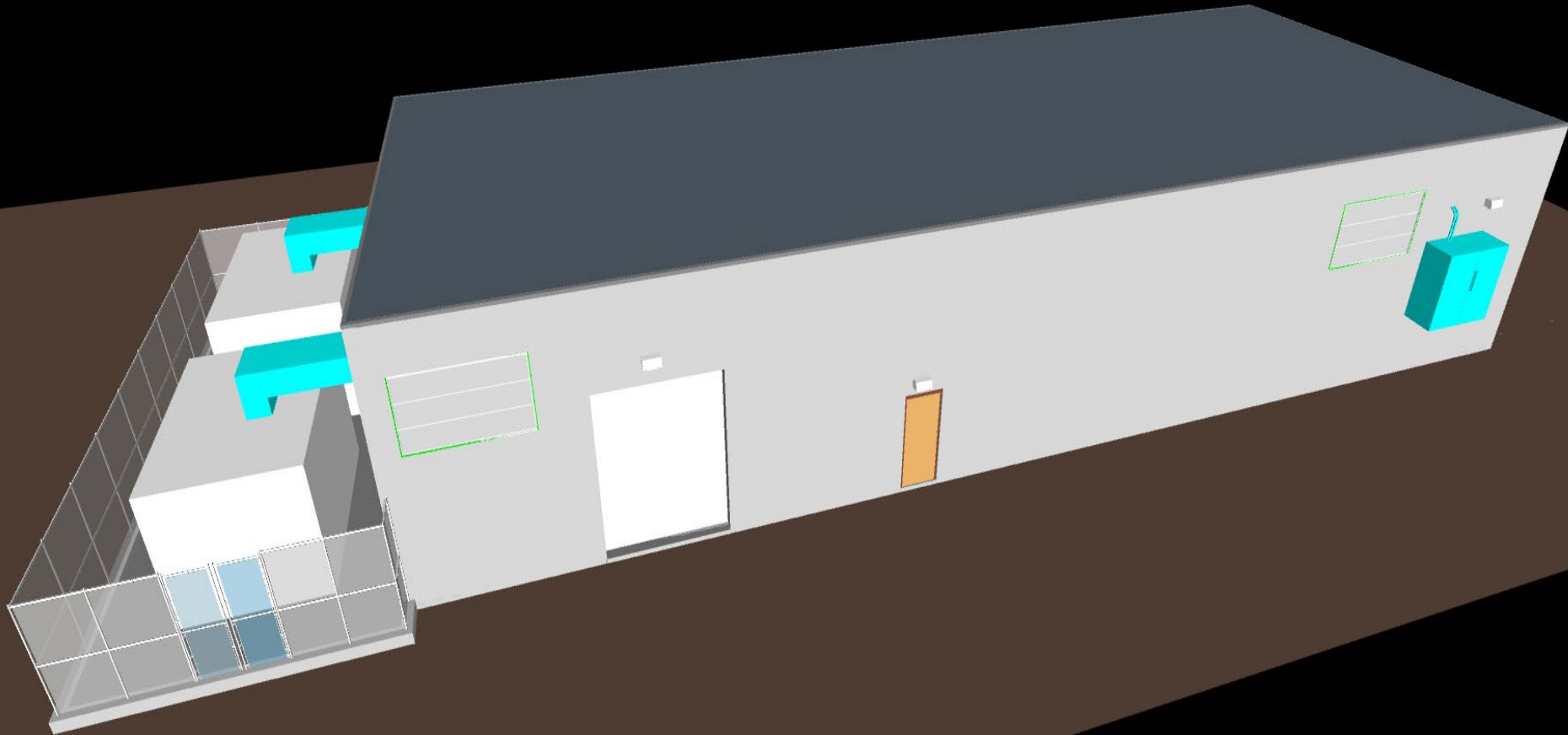
# Traction Power Substation (Con't 4)

## Ball Square Traction Power Substation



# Traction Power Substation (Con't 5)

## Ball Square Traction Power Substation



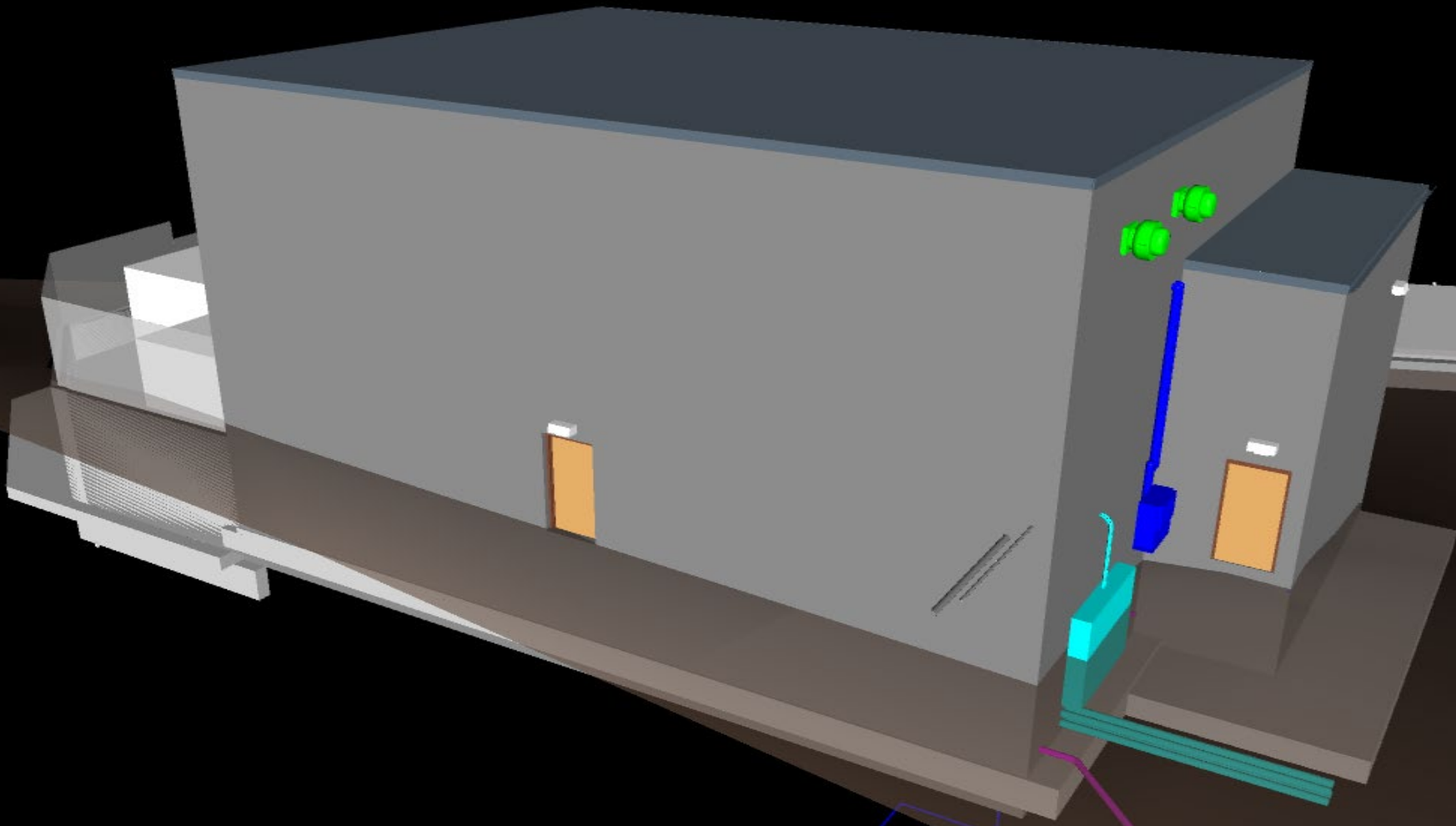
# Traction Power Substation (Con't 6)

## Pearl Street Traction Power Substation



# Traction Power Substation (Con't 7)

## Pearl Street Traction Power Substation





# Outreach – Hotline Responses

- 1,104 Inquiries thru Hotline, e-mail or direct contact with outreach staff (as of Feb. 27)
- 1,003 actions closed out





# Discussion

---

Q & A

