



GREEN LINE EXTENSION PROJECT



massDOT
Massachusetts Department of Transportation



GLX Community Working Group
Monthly Meeting #41
April 6, 2021

Agenda - Meeting #41

Welcome & Safety Moment

- Terry McCarthy, MBTA – GLX Deputy Program Director, Stakeholder Engagement
-

Automated Fare Collection System

- Will Kingkade, MBTA Senior Director, Automatic Fare Collection
 - Kathleen Wallace, MBTA Dep. Director, Automatic Fare Collection
-

Construction Update

- Jeff Wagner, GLXC Public Involvement Manager
-

Q & A

- All





MBTA Update

- Terry McCarthy, GLX Deputy Program Manager, Stakeholder Engagement



Ride Share Safety

Uber & Lyft Safety Tips



Ride Share Safety Tips

- Wait for your ride in a safe place.
 - Place inside with people if possible
 - Request your ride in a safe place
 - Last possible moment to meet the driver and car
- Always ask your driver “What is my name?”
 - Always positively identify your driver
- Verify the car and driver.
 - Make model and license plate



Ride Share Safety Tips (2)

- Don't ride alone.

- Ride with a friend – strength in numbers
- Split cost to boot

- Use trip-sharing features.

- Ride sharing feature
- Apps that sound an alarm & calls 911
- The Nimb Ring



- Let the driver know that the trip is being tracked.

- Make a phone call
- Hey Mom I am in my Uber now and will be there in 15 min. (Ask the driver how long)

- Choose where to sit wisely.

- Not in front seat if it can be avoided
- Right Rear has a vantage point to see the driver



Ride Share Safety Tips (3)

Make sure your driver follows the rules of the road

- Tell them at the start of the ride “I care about safety”

You need to follow the rules too.

- Do not ask for intermittent stop along your trip

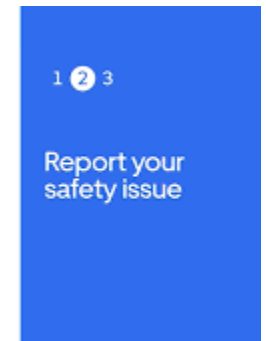
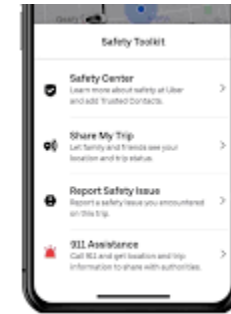
Trust your gut.

- Instincts of an uncomfortable feelings, have driver pull over at a safe spot and exit the ride

Be aware of traffic when entering and exiting the vehicle.

- Exit on the right at the sidewalk curb

Give feedback about your trip and driver.



MBTA Restoration of Service

- Bus
- Subway
- Commuter Rail
- Ferry Service

Pandemic Issues:

- Loss of 12 Bus Operator a month due to Natural Attrition
- Promoting Social Distancing on MBTA Vehicles
- Winter Peak – 100 MBTA Workers out due to Covid-19





Automated Fare Collection (AFC) System

- Will Kingkade, MBTA, AFC
- Kathleen Wallace, MBTA, AFC



AUTOMATED FARE COLLECTION – NEW FARE VENDING MACHINE



- LOWER TOUCH POINTS FOR ACCESSIBILITY
- BANKNOTES WILL BE DISPENSED AS CHANGE, IF NEEDED
- CONTACTLESS CARD PAYMENTS
- TAPPABLE CHARLIETICKETS
- FARE VALIDATION/DEDUCTION AT GLX





GLXC Construction Update

➤ Jeff Wagner, GLX Public Involvement Manager



Safety – Changing Conditions along the Rail line



- As of Monday, April 5 the GLX Project will no longer have some of the track outages available during most of the past year.
- Line 2 will no longer be out of service or always available for MPM use
- Removal of barrier in some areas (a sign of construction progress) also means the need for additional Employees In Charge (EIC) to provide on track protection.
- Workers will need to be vigilant as we go back to conditions that are similar to those in 2018 – 2019.



Recent Project Milestones – Steel Placement at School St.



- Steel was placed for the School St. Bridge on Feb. 25
- Utility relocation is a huge undertaking as crews move lines off the old utility bridge onto the renovated structure



Recent Project Milestones – Steel Placement at Medford St.



- Steel was placed on the Medford St. Bridge on March 18
- Deck construction is actively underway



Recent Project Milestones — Elevator Shaft Placement at Gilman Station



- Elevator Shaft Placed at Gilman Station on March 30



Recent Project Milestones – Rail Placement on Viaduct



- Ballast & rail placement underway this week now that waterproofing and membrane application is complete



Recent Project Milestones – Rail Placement on Mainline



- Track placement between Central and School St.
- Both inbound and outbound tracks in place
- Filling remaining track segments is a priority



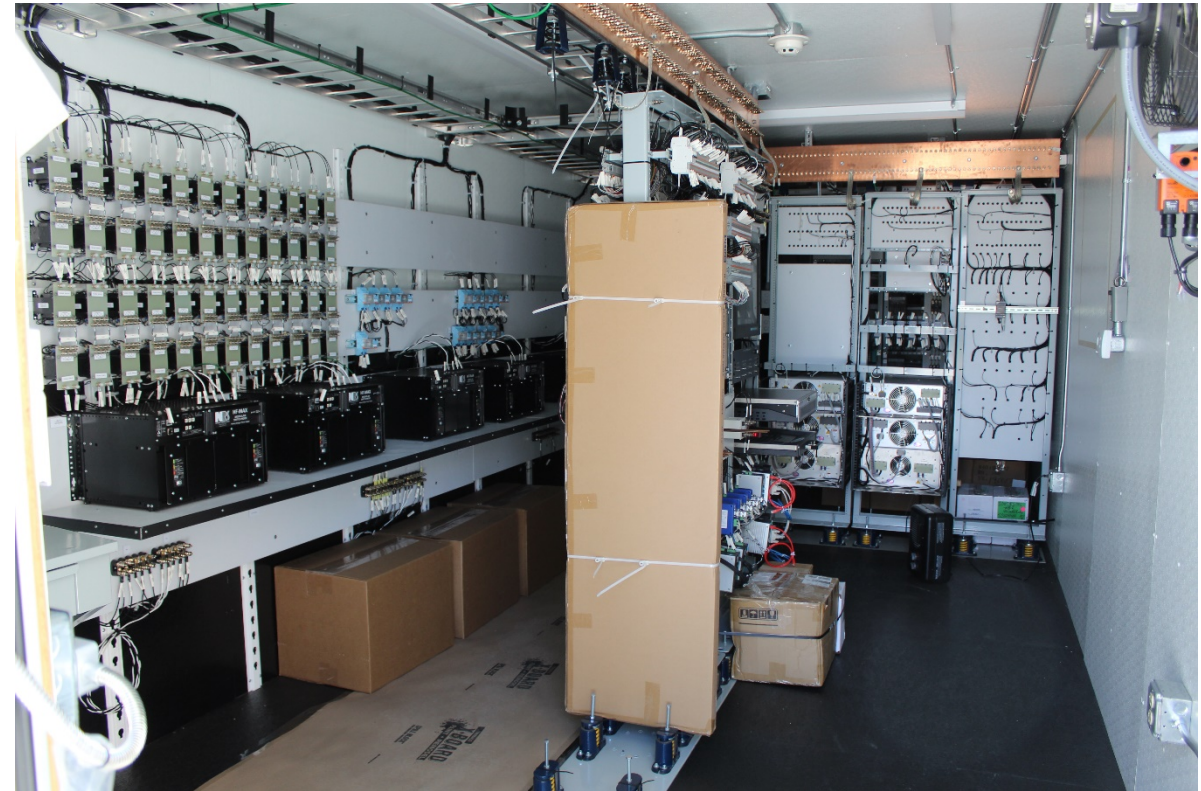
Recent Project Milestones – Systems

- AC line and DC parallel feeder cables installed at Union Square



Recent Project Milestones – Systems con't

- Three of 9 Central Instrument Houses on site
- Two are in place at Lechmere and Union Square. Third to be installed at McGrath near Brickbottom



Recent Project Milestones – OCS Pole Installation



- All 603 Overhead Contact System (OCS) pole foundations have been drilled



Station Construction – Jan. 2021/Now



Union Square Station



Lechmere Station



East Somerville Station



Station Construction – Jan. 2021/Now con't



Gilman Square Station



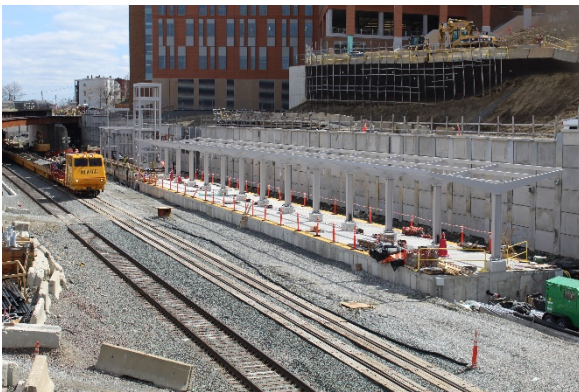
Magoun Square Station



Ball Square Station



Medford/Tufts



Bridge Construction & Modification – Jan. 2021/Now



Medford St.



School St.



Lowell St.



Cedar St.



massDOT
Massachusetts Department of Transportation



Vehicle Maintenance Facility



- Roll up doors now in place
- A lot of electrical, mechanical work and outfitting of rooms continues



Retaining Walls

- Retaining Wall construction very active between McGrath and Medford St as well as Cedar to Medford/Tufts
- Wall work near tracks given priority



McGrath to Walnut St.



North of Walnut



Medford/Tufts along Boston Ave

Community Path



- Deck work on the viaduct portion of the Path continues
- Warmer weather will allow for more concrete pours



Outreach – Hotline Responses

- 1,784 inquiries thru Hotline, e-mail or direct contact with outreach staff project to date. 43 contacts received in March.
- 1,685 actions closed out to date



GLX Project Community Connection Team

- Food & Toiletries Drive for Project Soup
- March 3 – April 1
- 335 lbs of food collected
- 965 personal care products donated



The GLX Community Connections Team

Project Soup

Spring Food & Toiletries Drive

Deadline: April 1, 2021 @ 9 am



MAKE A DONATION & WE'LL SHOP FOR YOU, PLEASE SEE MARY GRACE

HELP END HUNGER IN SOMERVILLE

Project SOUP, founded in 1969, is a food pantry and soup kitchen located in East Somerville. Their mission is to provide healthy, wholesome groceries and meals as a means of ending food insecurity in Somerville

Desired items:

Toothpaste	Coffee
Shampoo	Oil
Soap	Dried
Toilet Paper	Tea
Diapers	Pasta
Deodorant	Flour
Toothbrushes	Sugar
Laundry Detergent	Masa

***BRING UNEXPIRED
NON- PERISHABLE ITEMS ***

DROP OFF LOCATIONS:
200 Inner Belt – Alanna's area
35 Charlestown – Mary Grace's area



massDOT
Massachusetts Department of Transportation





Q & A

