



GREEN LINE EXTENSION PROJECT



massDOT
Massachusetts Department of Transportation



GLX Community Working Group
Monthly Meeting #44
July 6, 2021

Agenda - Meeting #44

Welcome & Safety Moment

MBTA FMCB Action

Testing & Commissioning

- Terry McCarthy, MBTA – GLX Deputy Program Director, Stakeholder Engagement

Construction Update

- Jeff Wagner, GLXC Public Involvement Manager

Q & A

- All





Welcome & Safety Moment

- Terry McCarthy, GLX Deputy Program Manager, Stakeholder Engagement



1. Safety Moment

Stay Safe During the July 4th Holiday

➤ Fire Work Safety – NH Vacation

- Keep a supply of water close by as a precaution
- Wear eye protection when lighting fire works
- Light only one firework at a time
- Never try to relight a “Dud”

➤ Grilling Safety

- Supervise barbecue grills at all times
- Keep the grill away from the house
- Use long-handle tools made for cooking on a grill

➤ Water Safety

- Talk to children, older youth and teenagers about water safety
- Swim in areas designated for swimming and has lifeguards on duty
- Designate a “Water Watcher” at private home pools



Summary of MBTA Fiscal & Management Control Board (FMCB) Action

- Terry McCarthy, GLX Deputy Program Manager, Stakeholder Engagement





**Massachusetts Bay
Transportation Authority**

Green Line Extension Update

Fiscal and Management Control Board

June 21, 2021

John Dalton, Program Manager

Project Status

- Progress Metrics

- GLX is approximately 80% complete
- 65% of new Green Line track installed (100% complete on Branch 1 and Vehicle Maintenance Facility)
- 10 of 10 elevator towers erected
- 588 of 603 Overhead Catenary Poles erected
- Handover of Vehicle Maintenance Facility scheduled for next month
- System Testing and Commissioning effort underway

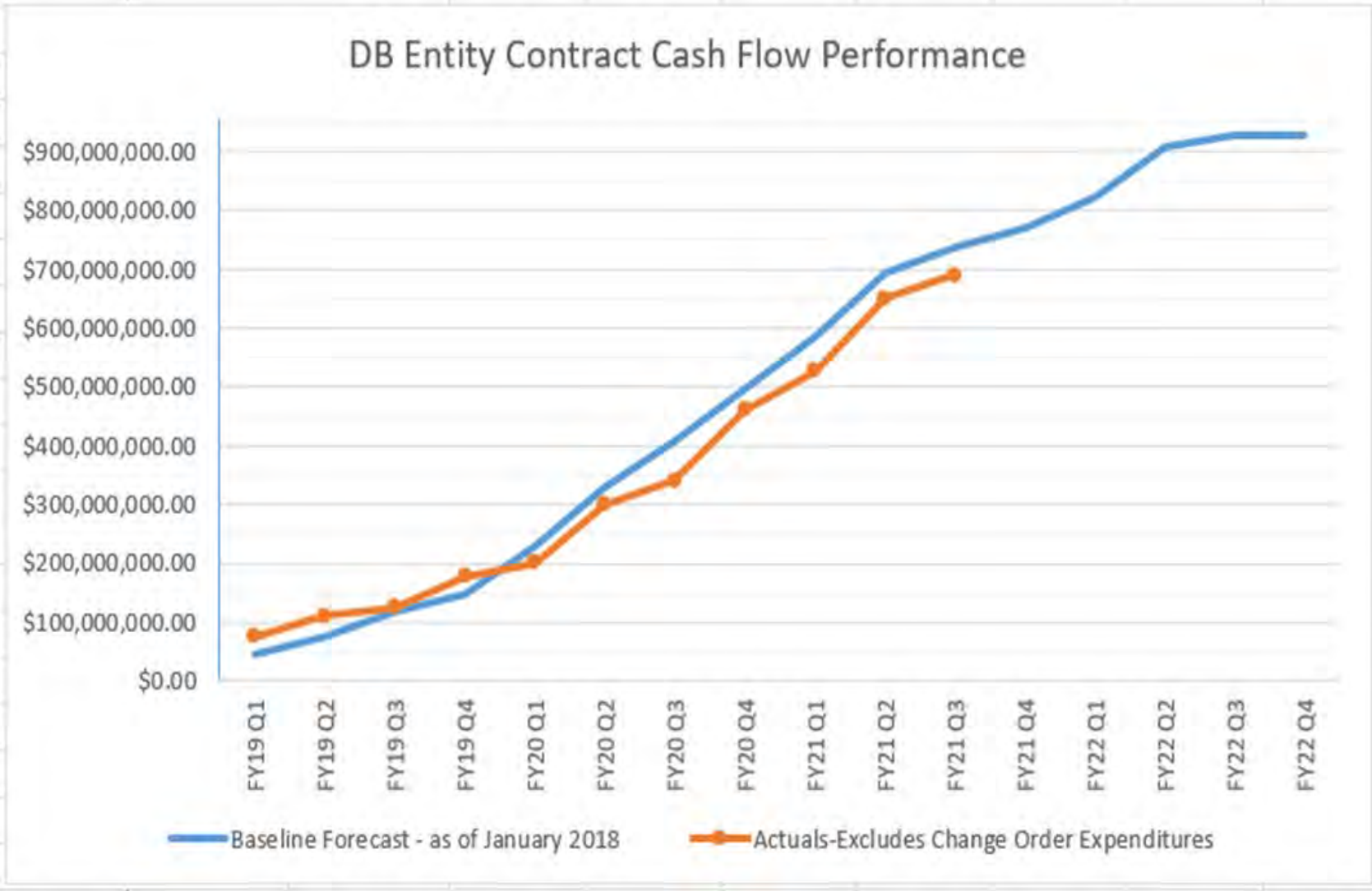


Project Risks

- COVID-19
 - Supply chain impacts (residual and existing)
 - Work productivity and inefficiencies during GLX's most critical year (on-site and off-site)
 - Overseas Engineering / professional service work impacted
- Contractor/Subcontractor Labor Deployment
- Testing & Commissioning
 - Interface with the existing/legacy Green Line systems and testing/commissioning of new GLX elements



Overall Progress for the DB Contract Only



Project Status – Photos (Before and After)



Future Site of East Somerville Station – June 2019

Draft for Discussion & Policy Purposes Only

Project Status – Photos (Before and After)



Future Site of East Somerville Station – June 2021
Draft for Discussion & Policy Purposes Only

Project Status – Photos (Before and After)



Future Site of Lechmere elevated Station – August 2019

Draft for Discussion & Policy Purposes Only

Project Status – Photos (Before and After)



Future Site of Lechmere elevated Station – June 2021

Draft for Discussion & Policy Purposes Only

Project Status – Photos (Before and After)



Future Site Red Bridge Viaduct – August 2019

Draft for Discussion & Policy Purposes Only

Project Status – Photos (Before and After)



Future Site Red Bridge Viaduct – June 2021
Draft for Discussion & Policy Purposes Only

Project Status - Photos



Aerial View – Red Bridge Viaduct – April 2021
Draft for Discussion & Policy Purposes Only



Project Status – Photos



Aerial View – Red Bridge Viaduct – April 2021

Draft for Discussion & Policy Purposes Only



Project Status – Photos



Aerial View – Red Bridge Viaduct – May 2021

Draft for Discussion & Policy Purposes Only



Project Status – Photos (Before and After)



Future Site of GLX Vehicle Maintenance Facility – March 2019

Draft for Discussion & Policy Purposes Only

Project Status – Photos (Before and After)



Future Site of GLX Vehicle Maintenance Facility – June 2021

Draft for Discussion & Policy Purposes Only

GLX Global Settlement with Design-Build Entity

- Settlement includes
 - Significant reduction of future litigation risk (COVID-19 and otherwise)
 - Updated Revenue Service Dates
 - Branch 1 (Union Square Branch) – December 2021
 - Branch 2 (Medford Branch) – May 2022
 - Close-out of all COVID-19 impacts (costs and schedule)
 - Direct Costs (sanitization, stand downs, additional PPE, etc.)
 - Indirect Costs (construction and fabrication productivity impacts)
 - Extended Overhead costs
 - Close-out of Existing Change Orders/Disputes on the project
 - Risk Transfer from MBTA to DB Entity for potential future impacts (weather, differing site conditions, etc.)
 - Obligatory Contractor/Subcontractor Staff deployment commitments
 - Settlement Value is a Not-to-Exceed amount of \$80M.



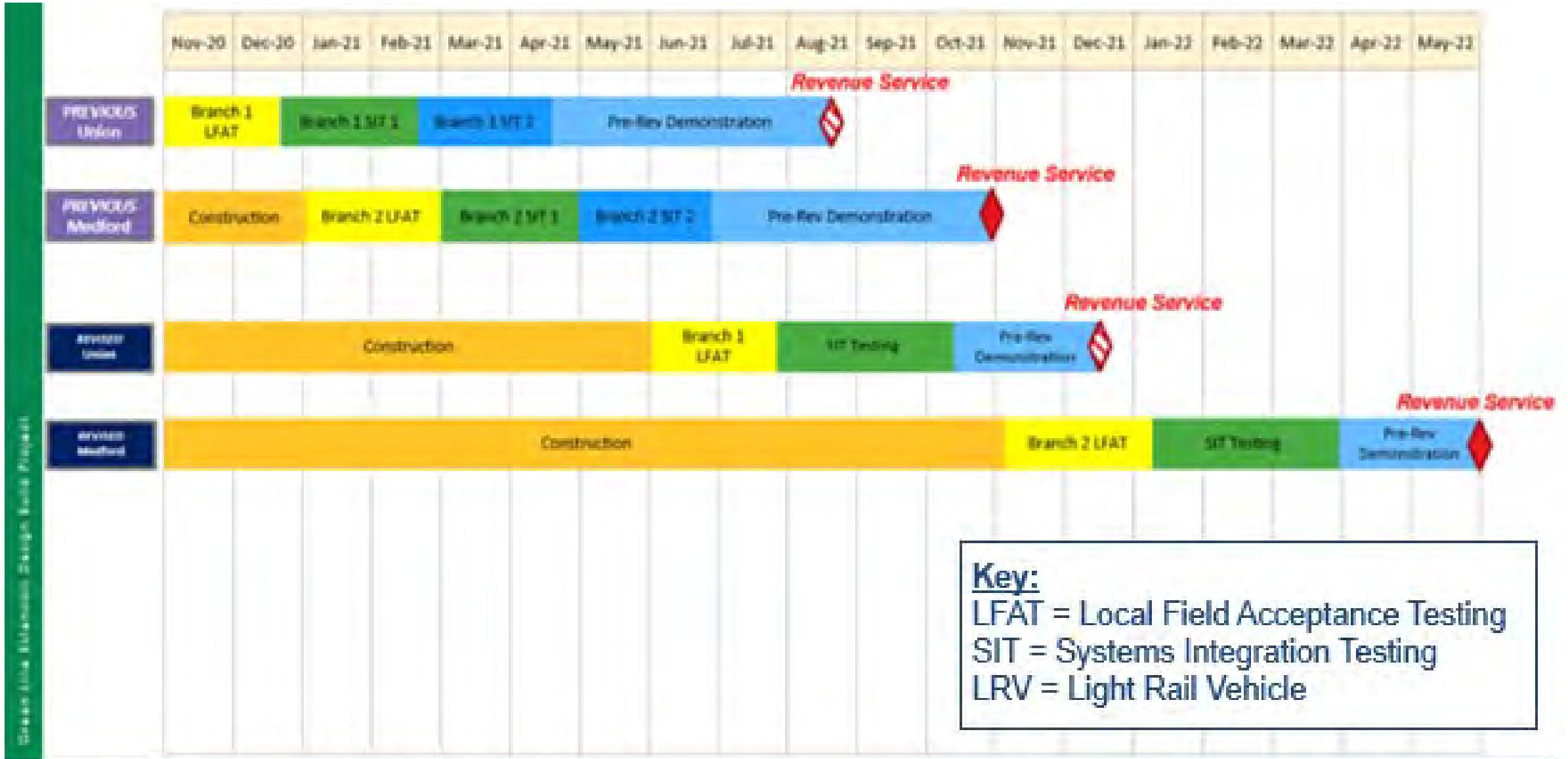


GLX Testing & Commissioning

- Terry McCarthy, GLX Deputy Program Manager, Stakeholder Engagement




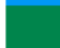
Revised Revenue Service





Revised Bridge Schedule

Bridge Closures	2019												2020												2021												
	WINTER			SPRING			SUMMER			FALL			WINTER			SPRING			SUMMER			FALL			WINTER			SPRING			SUMMER			FALL			
	J	F	M	A	M	J	J	A	S	O	N	D	J	F	M	A	M	J	J	A	S	O	N	D	J	F	M	A	M	J	J	A	S	O	N	D	
Washington Street					Opened May 31, 2020																																
Medford Street*																																					
School Street*																																					
Broadway				Opened June 6, 2020																																	
Lowell Street																																					
Cedar Street																																					
College Avenue																																					
Green Line Bus Diversion Lechmere to North Station																																					
Lechmere Viaduct																																					

* Schedule changes due in part to COVID-19 related impacts.

 Closures to date
 Closures remaining

 Generally open - traffic restrictions at times
 Estimated Green Line Viaduct closure

July 1, 2021



Ball Square Transportation Oriented Development (TOD)

Transit and Economic Development

- TOD Sponsor
- TOD Stakeholders
- TOD Advocates



Ball Square Transportation Oriented Development (TOD) (2)

TOD Principles

- Density of Mixed Use
- Equitable Development
- Affordability
- Job Access





GLXC Construction Update

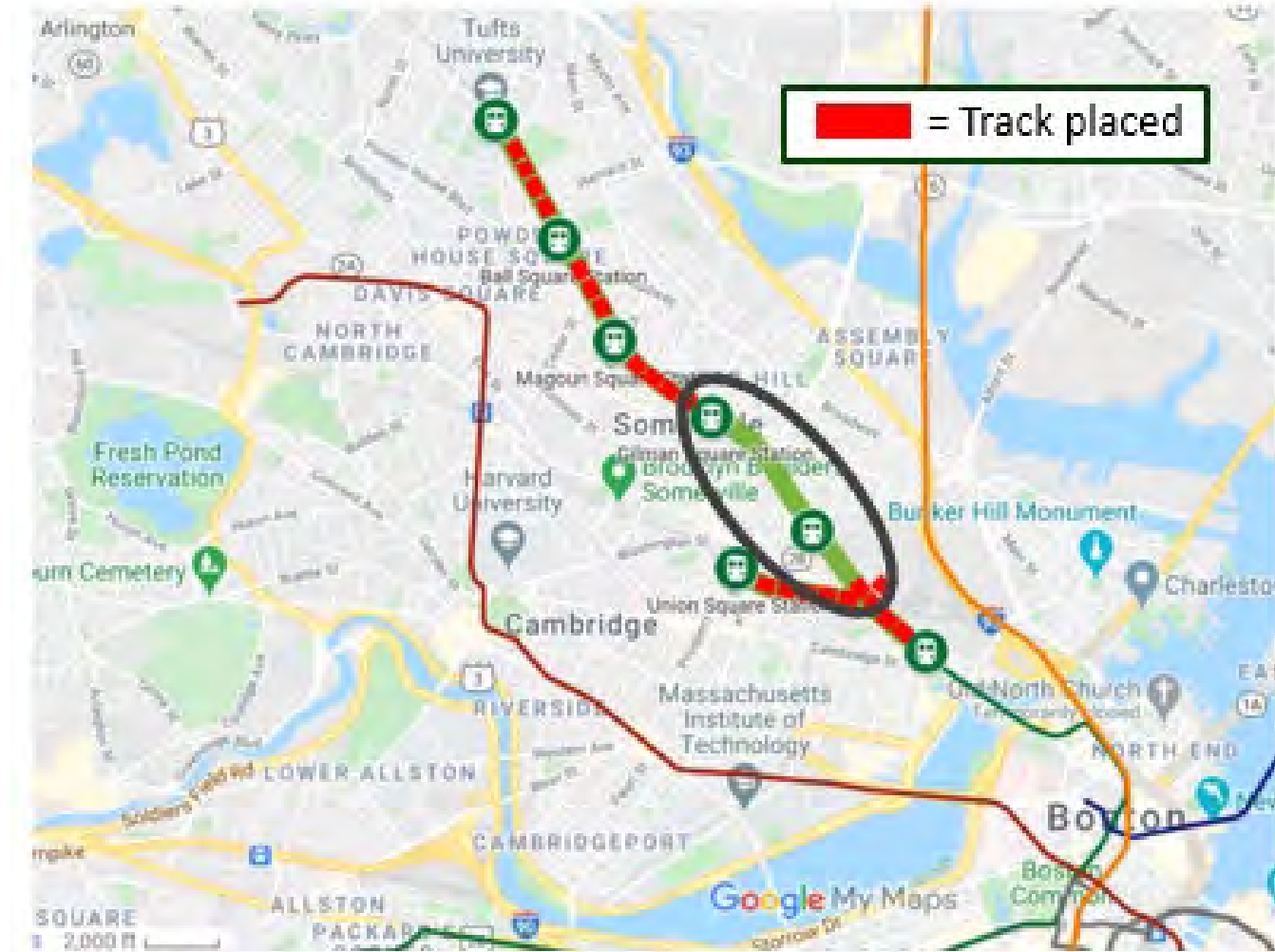
➤ Jeff Wagner, GLX Public Involvement Manager



Recent Project Milestones – Light Rail Track Placement



- Track placement has been active this month between Medford St. and East Somerville Station
- One track currently in place along this segment



Construction Highlights – Track Placement

- Work underway bringing track from Medford St. to East Somerville Station



Construction Highlights – Vehicle Maintenance Facility



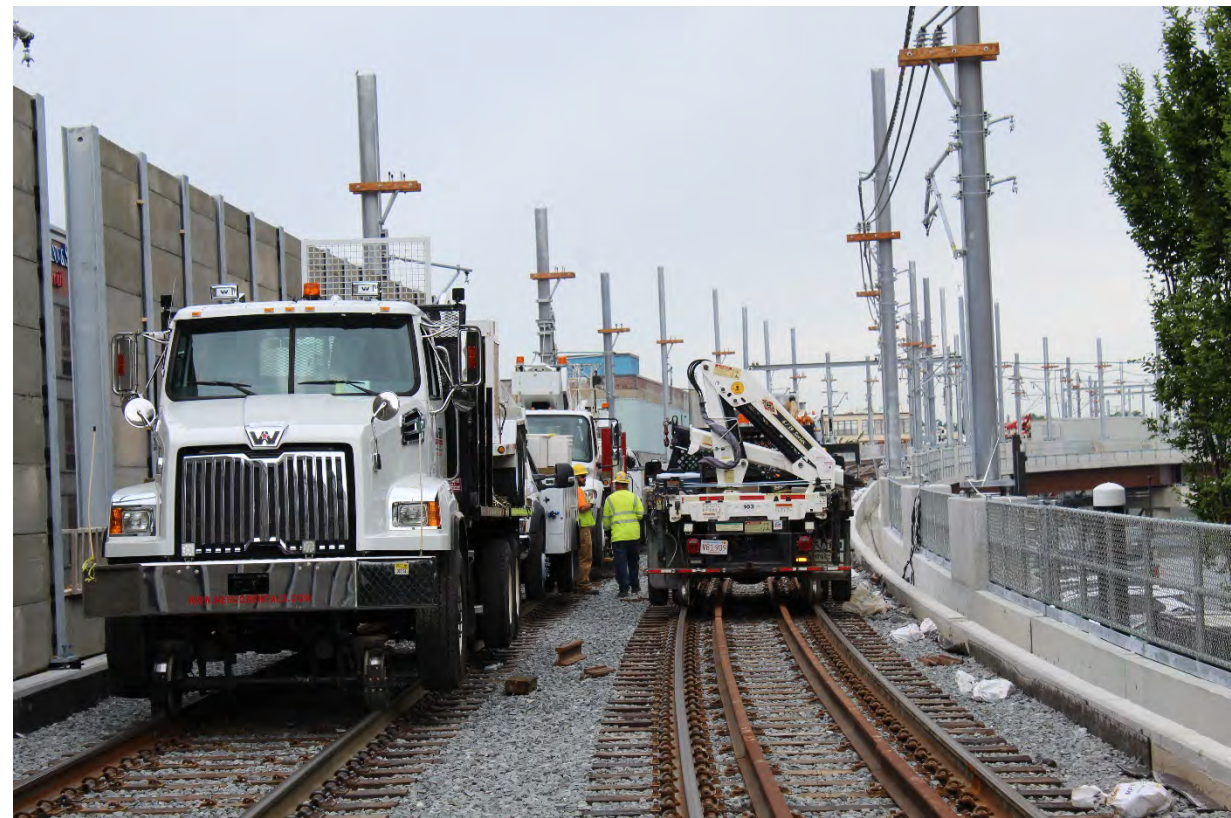
- Now that power has been turned on at Vehicle Maintenance Facility (VMF) additional electrical work is moving forward
- Exterior lighting, curb work and paving are a few of the finishing details being addressed



Construction Highlights – Systems Installation



- Crews working around the clock placing cable on the Union Square Branch
- Work bringing Traction Power Substations online is also high priority



Construction Highlights – Union Square Station



- Significant amount of electrical work underway both at station and Central Instrument House



Construction Highlights – Lechmere Station



- Significant amount of electrical work underway
- Bus loop off Water St. continues to take shape



Construction Highlights – Magoun Square Station



- Steel walkway placed on June 19
- Connection work between Lowell St. Bridge & Station now Underway



Construction Highlights – Medford/Tufts Station



- Platform is now in place
- Work on pedestrian bridge and emergency access ramp active



Construction Highlights – Washington St

- South sidewalk is complete with a few punchlist items remaining before opening
- Roadway markings in place



Construction Highlights - Community Path



- Work on the Community Path has picked up especially between Walnut and Medford St and near the existing terminus at Lowell St.



Outreach – Hotline Responses

- 1,916 inquiries thru Hotline, e-mail or direct contact with outreach staff project to date. 53 contacts received in June.
- 1,821 actions closed out to date

