



GREEN LINE EXTENSION PROJECT



massDOT
Massachusetts Department of Transportation



GLX Community Working Group
Monthly Meeting #48
November 2, 2021

Agenda - Meeting #48

- **Welcome & Safety Moment**
 - Terry McCarthy, MBTA – GLX Deputy Program Dir. Rail Activation / Stakeholder Engagement

- **Progress**
 - John Dalton, MBTA – GLX Program Manager

- **Construction Update**
 - Jeff Wagner, GLCX Public Outreach

- **Q & A**
 - All



Safety Moment

Storm Preparedness

Alternative Power Safety

- Generator safety
 - Fueling
 - Carbon monoxide



Radio / phone communications

- Battery back-ups - Hotspot



Heat / Warmth

- Appliances U/L approved for indoor use

Food / Water / Medical Prescriptions

- Hydration – warm liquids and food supply
- Access to critical prescription drugs (Hospital)



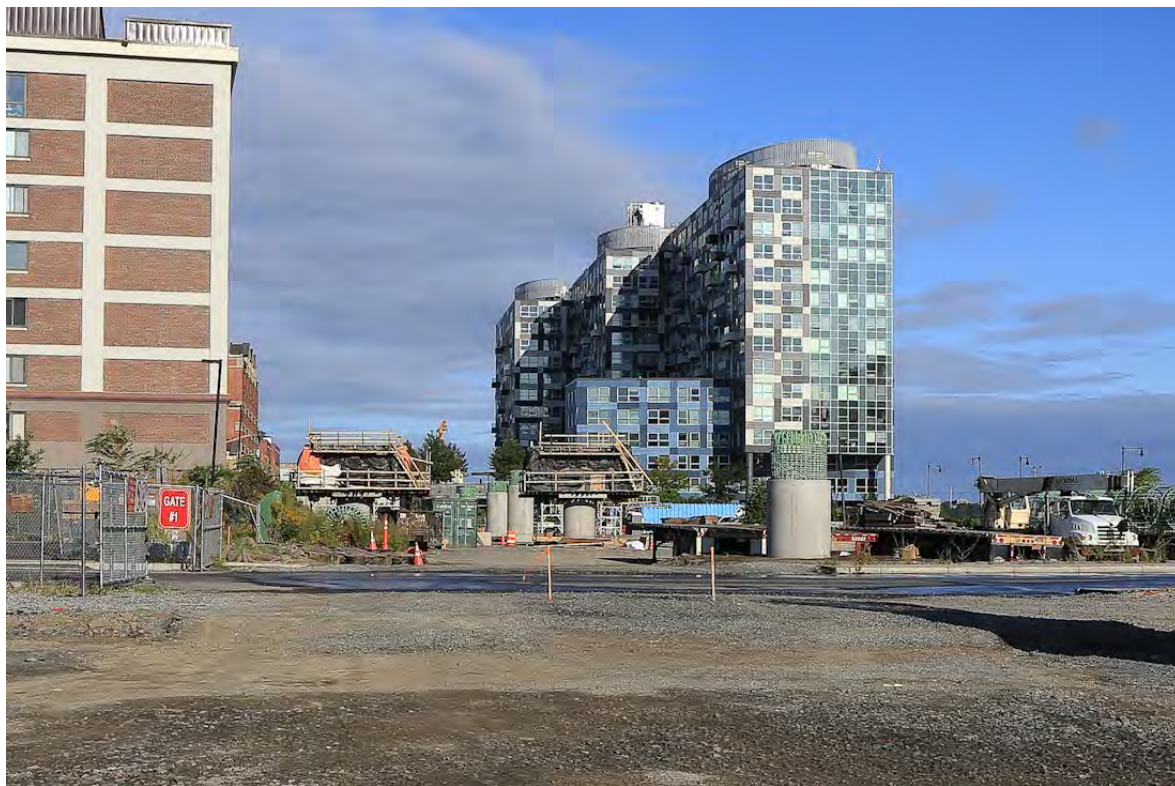


Progress

- MBTA – John Dalton, GLX Program Manager



Lechmere Station



September 2019



September 2021



massDOT
Massachusetts Department of Transportation



Lechmere Station cont.



June 2020



October 2021



massDOT
Massachusetts Department of Transportation



Union Square Station



June 2020



October 2021



massDOT
Massachusetts Department of Transportation



Red Bridge Viaducts



June 2020



October 2021



massDOT
Massachusetts Department of Transportation



Vehicle Maintenance Facility



June 2020



October 2021



massDOT
Massachusetts Department of Transportation



Community Path



June 2020



October 2021



East Somerville Station



June 2020



October 2021



Gilman Square Station



June 2020



October 2021



massDOT
Massachusetts Department of Transportation



Magoun Square Station



June 2020



October 2021



massDOT
Massachusetts Department of Transportation



Ball Square Station



June 2020



October 2021



massDOT
Massachusetts Department of Transportation



Medford/Tufts Station



June 2020



November 1, 2021



massDOT
Massachusetts Department of Transportation





GLX Construction Update

- Jeff Wagner, GLXC Public Outreach



Safety – Changing conditions on the GLX



- With operations testing on the Union Square Branch comes additional MBTA training and the need for extra awareness/caution



Construction Highlights – Vehicle Maintenance Facility



- Final paving around VMF this week
- Facility in the hands of MBTA Operations personnel



Construction Highlights – Light Rail Track Placement



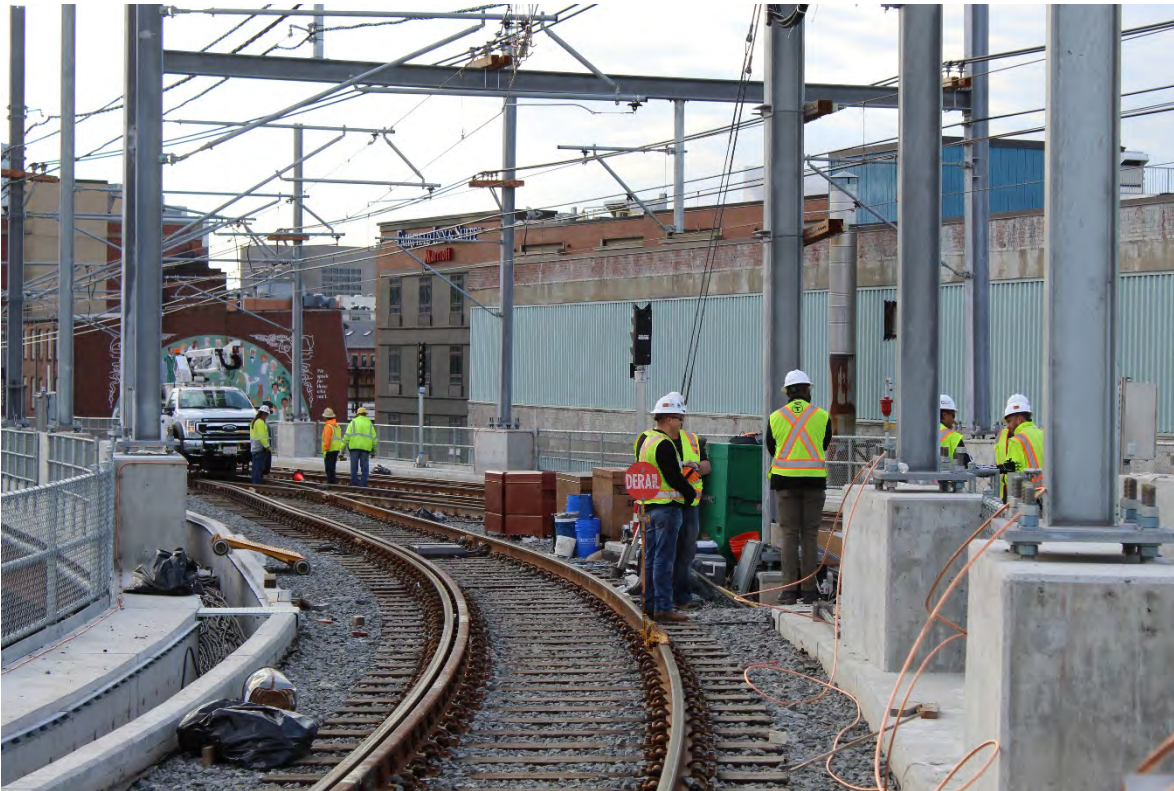
- Track work along Medford line nearly complete. Just 500 feet left to place out of 15.6 miles.
- Gaps remain at Magoun (west bound), Ball Square (west bound), Medford/Tufts (east bound) & Yard Lead 3



Construction Highlights – Systems Installation



- Crews have catenary wire adjusted to final height on Branch 1. Testing is ongoing.
- Systems work along Branch 2 is progressing



Construction Highlights – Union Square Station



- System & Electrical work is active throughout the station area



Construction Highlights – Lechmere Station



- Electrical & systems work continues at viaduct level
- At street level substructure finishing/cleaning & detail work continues



Construction Highlights – Lechmere Station con't



- The bike rack below Lechmere Station



Construction Highlights – Medford St. Bridge



- Work remains at Medford St on a water main cross over and sewer line connection



Construction Highlights – School St. Bridge



- An old duct bank needs to be removed and a new one built
- Emergency vehicles can cross the bridge



Construction Highlights – Community Path



- Community Path construction is advancing from Lowell south down to the elevated portion near Brickbottom condos



Outreach – Hotline Responses

- 2,056 inquiries thru Hotline, e-mail or direct contact with outreach staff project to date.
- Nearly 2,000 actions closed out to date



GLXC Halloween Fun





Q & A

