



Green Line Extension Project



massDOT
Massachusetts Department of Transportation



GLX General Public Meeting
Project Update
December 9, 2020



Welcome

- Terry McCarthy, MBTA / GLX Deputy Program Manager – Stakeholder Engagement



Agenda

Introduction

Terry McCarthy, GLX Deputy Program Manager, Stakeholder Engagement

GLX Project Background

John Dalton, GLX Program Manager

Construction Staging / Sequencing

GLX Virtual Tour

Project Outreach

Jeff Wagner, GLX-C Public Involvement Manager

Video of GLX Alignment

Terry McCarthy

Randy McSherry, GLX-C Construction Manager

Questions and Answers

Terry McCarthy

Martin Nee, GLX Stakeholder Manager

Erin Reed GLX-C Public Involvement Support

Amanda Smith GLX Stakeholder Support



Recorded Meeting

- Tonight's Public Meeting is being recorded
- It is a live stream meeting on the Zoom Platform
- It will be linked to the [Mass.Gov/glx](https://www.mass.gov/glx) website
- If you choose to participate in any identifiable way, your consenting to be recorded is implicit
- If you do not want to be recorded, please forward any comments or concerns to info@glxinfo.com



Safety Moment

The condition of the present Pandemic is difficult, to say the least

Tips for dealing with isolation and loneliness

- Connect with a friend and a family member each day
- Contact by phone and virtual social media
- Eat Healthy and Exercise
- Keep a regular schedule including sleep
- Take a break and a day off when able

Keep in contact with your health and mental health providers through virtual appointments



Q & A Session

Tonight's meeting will have a Q&A session after the Project Update Presentation

We have approximately 500+ registered for tonight's virtual meeting.

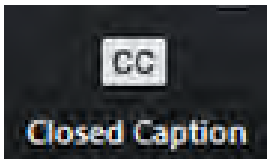
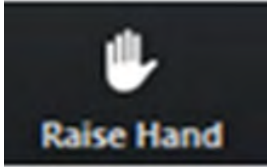
We provide the following Q&A methods:

- Live Voice Comment through the Zoom Raise Hand Feature*
- Q&A Dialogue Box
- We encourage email through our info@glxinfo.com
- Recorded voice message at [\(617\) 684-5693](tel:6176845693)

*with 500+ registrants live voice comment will be limited as time allows and attendees should also submit their question in the Q&A Dialogue Box



Zoom Webinar Tools



- All attendees will be placed on mute and cameras will be turned off upon entry
- During the Q&A session, the meeting hosts will alternate between the typed questions in the Q&A box and raised hands (live question/comment):
 - To raise your hand if you are viewing/listening to this meeting using an internet connection, click on the **"Raise Hand"** icon and you will be added to the queue
 - If you have dialed into the meeting using a phone and would like to ask a question, you may dial *9 to raise your hand and you will be added to the queue
- When it is your turn to ask a question/provide comment, the host will unmute you and announce you by name or the last 4 digits of your phone number.
- The project team will answer as many questions as possible during the meeting and will provide answers to additional questions on the project website following the meeting.
- The meeting hosts will answer questions live and may not type answers to the questions in the Q&A box.
- Closed captions will be available during the meeting and are shown at the bottom of the screen. To move the captions around on your screen, you can click and drag them to another area. If you do not wish to view the captions, you may turn off this feature by clicking on the closed caption icon and select "Hide Subtitle"

Zoom Webinar Tools (2)

Other options to submit questions and comments to the project team:

- Submit your questions and comments in writing to the project team via email at info@glxinfo.com
- Call **(617) 684-5693** and record a voicemail for the project team. (Be sure to leave your contact information for the team to provide a response to you).

The video recording of this meeting and the presentation slides will be posted to the project website at:

www.mass.gov/lists/glx-public-meetings-documents





MBTA Project Update

➤ John Dalton, MBTA / GLX Program Manager



Safety

Working Safely & Fighting COVID-19

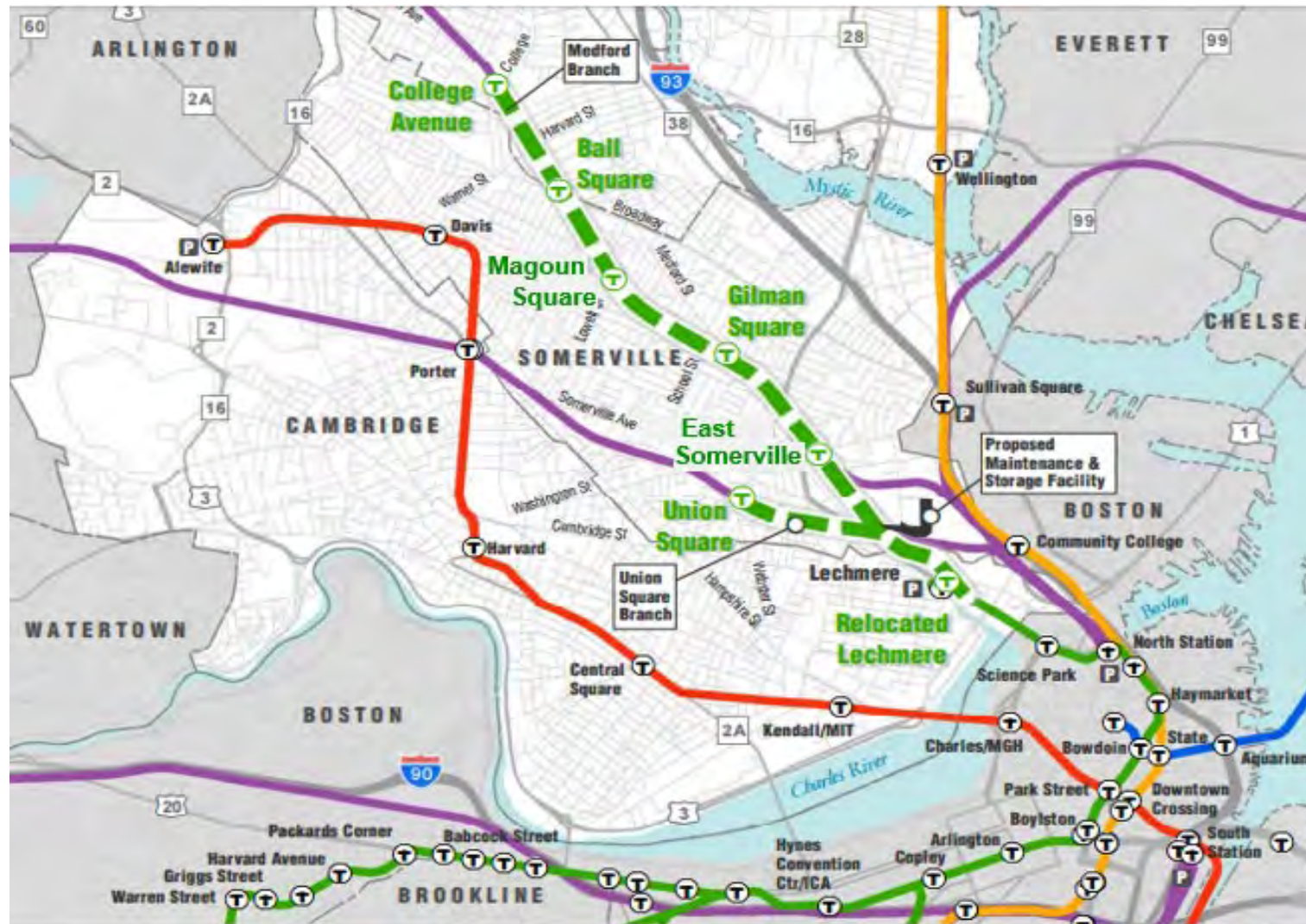
- New Construction rules & training commenced in December in response to new mask mandate
- Additional PPE, distancing requirements, handwashing stations, disinfectant kits for equipment, medical screening & self reporting
- Highly visible COVID-19 safety communications in the field and offices
- 2 dedicated COVID-19 safety officers brought onboard in April
- Field work continues to progress safely but there continue to be impacts



Genesis of GLX Project



GLX Project Area



GLX Quick Facts

- **Seven light-rail GLX stations**
 - Relocated Lechmere Station
 - 5 on Medford Branch
 - 1 on Union Square Branch
- **Conforms with all environmental commitments and committed scope elements as established in the Full Funding Grant Agreement (FFGA)**
- **Includes a multiuse community path**
- **Procurement of 24 Green Line light rail vehicles**
- **Vehicle Maintenance Facility (VMF)**
- **Program Budget - \$2.3Bn**



Project Goals & Benefits

- Improves local and regional air quality
- 20% of Somerville population is within walking distance of rail transit today, and 80% is anticipated to be so with GLX
- Economic benefits, including the improvement of the commercial tax base

Project History

1. “Episode 1” was CM/GC delivery method; 7 total packages
2. 4 packages approved; could not agree on Guaranteed Maximum Price beyond that
3. Late 2015 – MBTA halted that project; began re-design for affordability
4. May 2016 – MBTA Board approved Redesign & Reprocurement
5. November 2016 – Design Build procurement process began
6. December 20, 2017 – “GLX Constructors” received Notice to Proceed



Additive Options

Priority	Additive Options
1.	Design and construction of station canopies to all stations.
2.	Design and construction of elevators to stations proposed for new/additional elevators.
3.	Inclusion of an art program. (This is structured as a \$720,000.00 allowance.)
4.	Design and construction of the community path connection to Chester Avenue.
5.	Design and construction of the community path connection from East Somerville to Lechmere.
6.	Design and construction of an enhanced VMF.

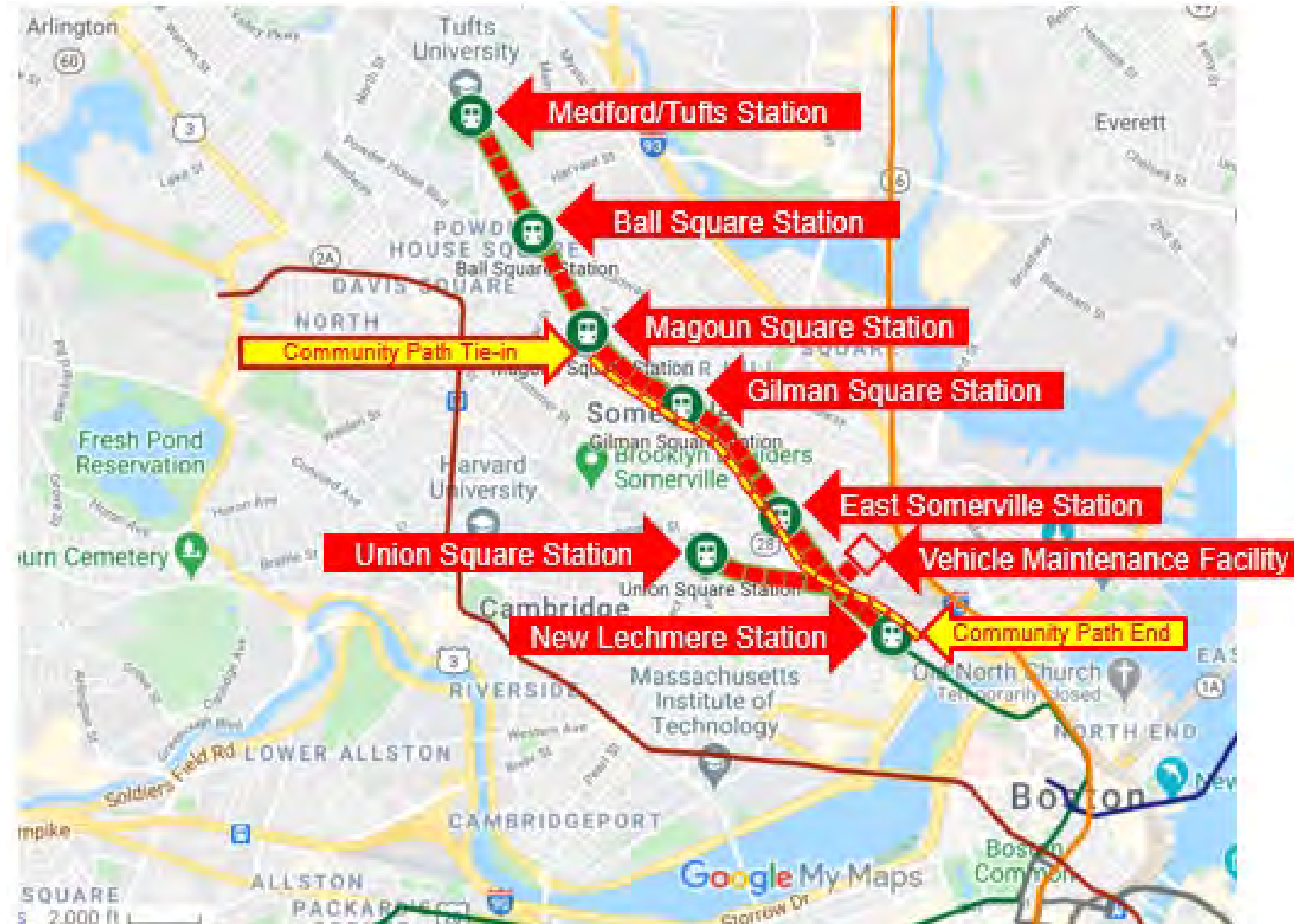




➤ Tour Overview Map



GLX Project Area (2)

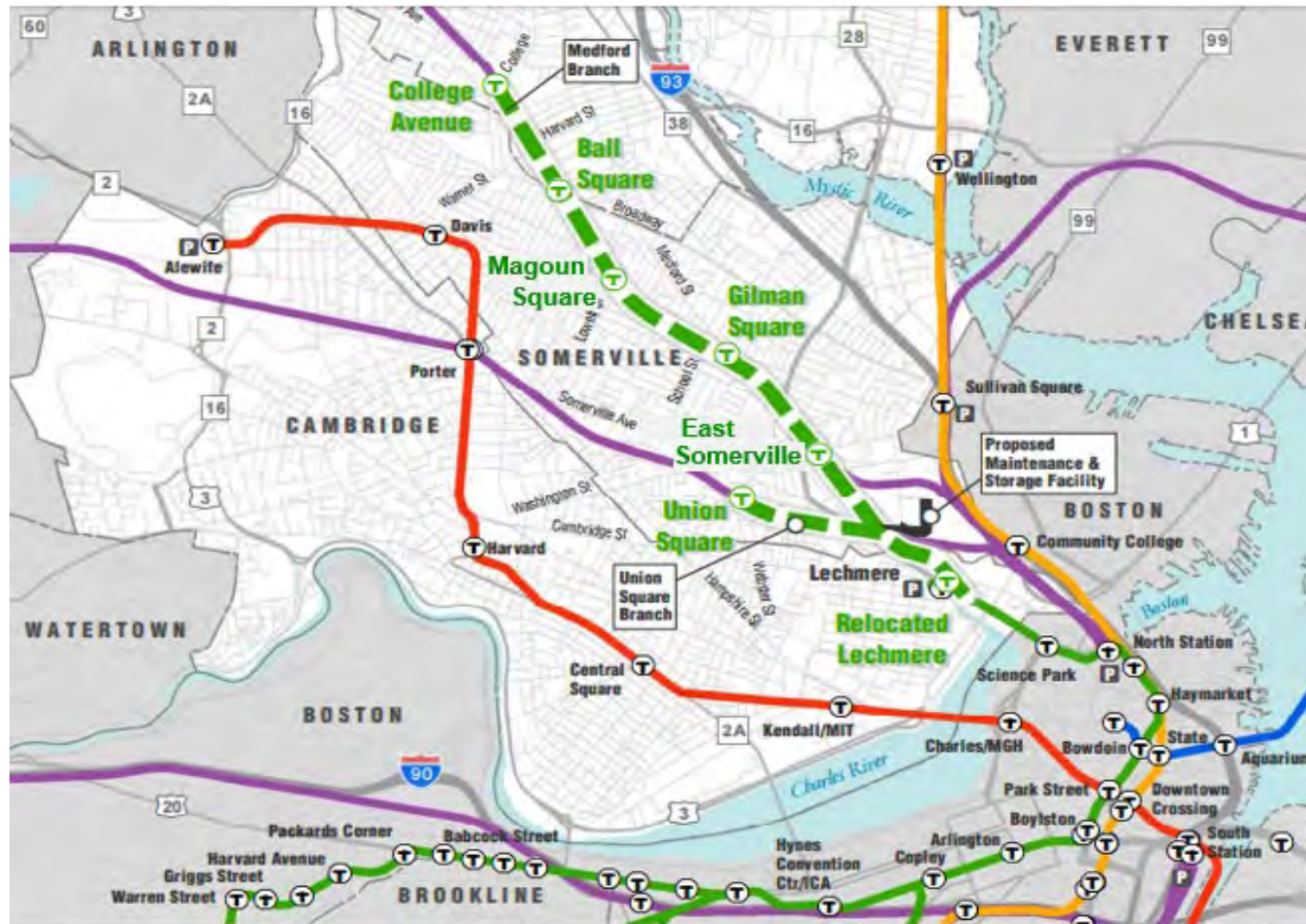




➤ Alignment Construction Sequencing



GLX Project Area (3)



Construction Sequencing

*Original
Configuration*



Fall 2018

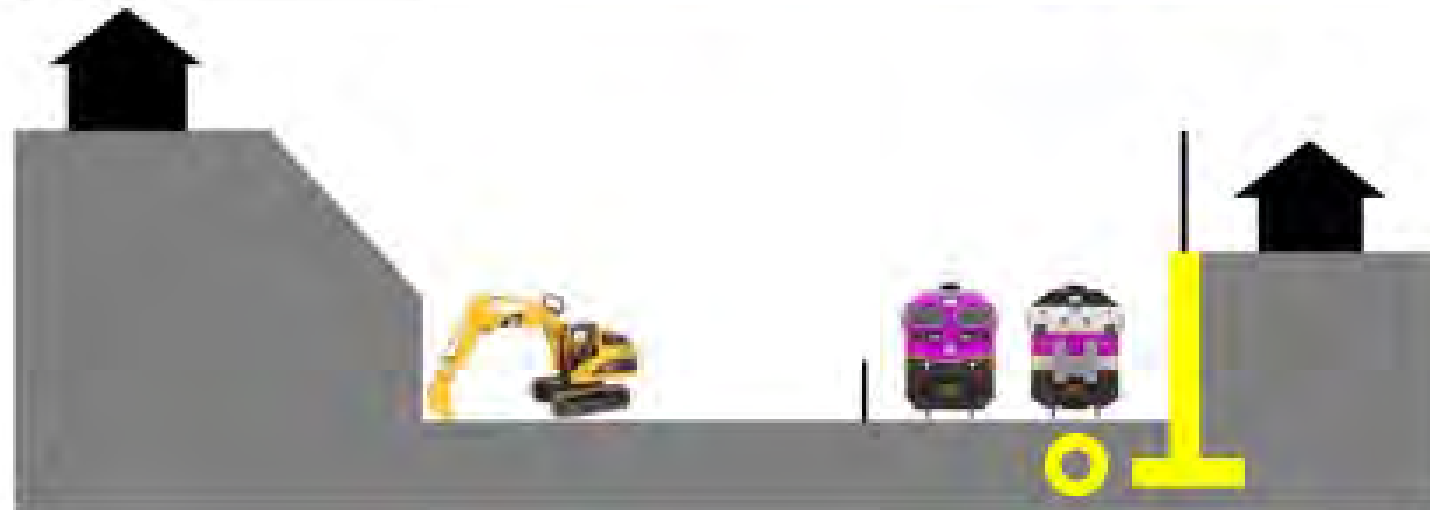


Construction Sequencing (2)

Interim Configuration



Summer 2020 Configuration

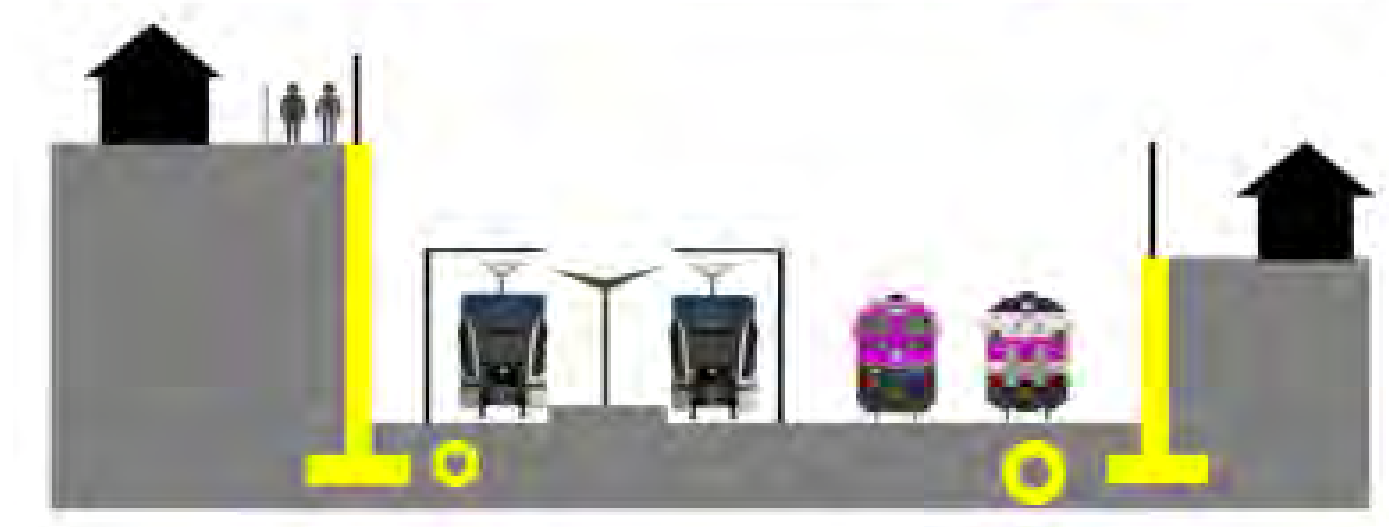


Construction Sequencing (3)

2020 / 2021



*New
Green Line
In Service*



massDOT
Massachusetts Department of Transportation



GLX General Public Meeting
Project Update
December 9, 2020

Work Zone Staging

Commuter Line Track Shift

- With Commuter Rail shifted to permanent location, workers now have more than double the space to operate



April 2018



May 2020



June 2020

Construction Staging



From School Street Bridge facing north - October 2018



From School Street Bridge facing north - March 2020



Overview

Current Project Snapshot

- Project approximately 62 percent complete
- December 2021 completion
- 650+/- contractor personnel onsite.



Progress and Risks

Risk Management

- COVID-19 labor and supply chain impacts
- Contractor deployment of resources
- System Integration and Testing
- Winter weather



Recent Steel Erection Progress



Final Span of viaduct structural steel



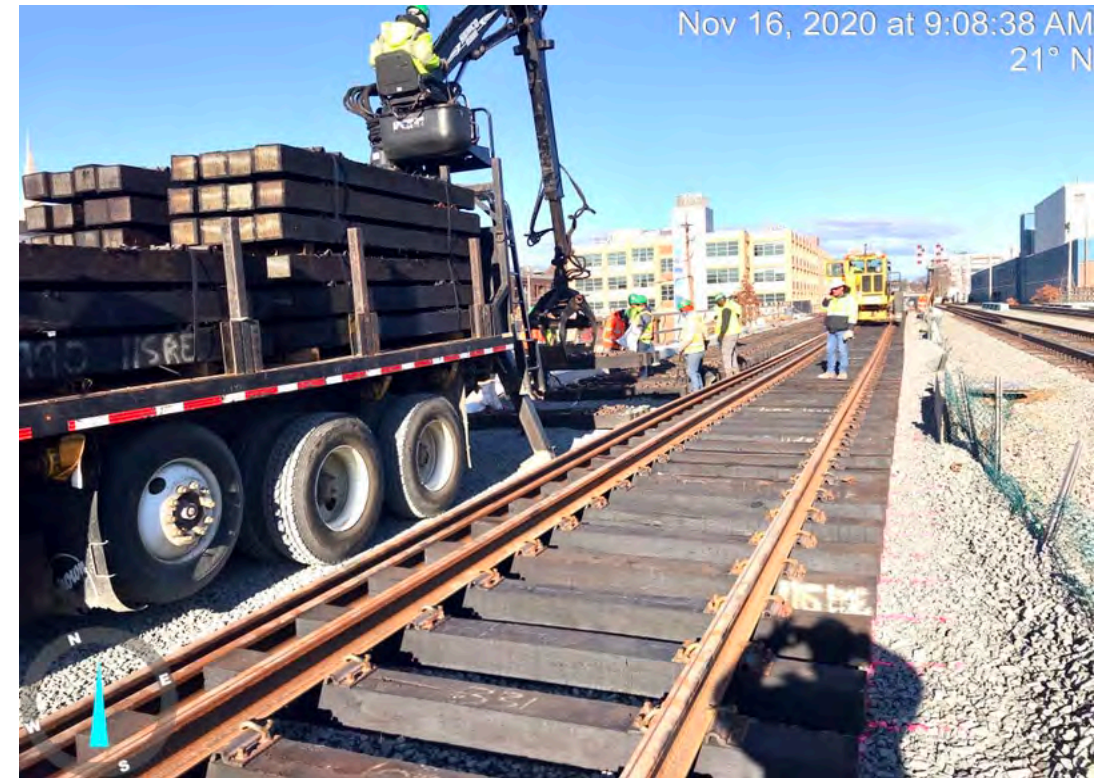
Elevator Tower at Lechmere Station



Track Installation



Union Square Branch



Medford Branch

Station Platform Construction Status

Station Platform Construction	2019				2020				2021			
	WINTER	SPRING	SUMMER	FALL	WINTER	SPRING	SUMMER	FALL	WINTER	SPRING	SUMMER	FALL
Lechmere												
Union Square												
E. Somerville												
Gilman Square												
Magoun Square												
Ball Square												
Medford / Tufts												

* Schedule is subject to change based on COVID-19 impacts, weather, and other factors.

Station platform under construction



Bridge Closure Matrix/Status

Bridge Closures	2019												2020												2021											
	WINTER			SPRING			SUMMER			FALL			WINTER			SPRING			SUMMER			FALL			WINTER			SPRING			SUMMER			FALL		
	J	F	M	A	M	J	J	A	S	O	N	D	J	F	M	A	M	J	J	A	S	O	N	D	J	F	M	A	M	J	J	A	S	O	N	D
Washington Street						Opened May 31, 2020																														
Medford Street*																																				
School Street*																																				
Broadway						Opened June 6, 2020																														
Lowell Street																																				
Cedar Street																																				
College Avenue																																				
Green Line Bus Diversion Lechmere to North Station																																				
Lechmere Viaduct																																				

* Schedule changes due in part to COVID-19 related impacts.



Closures to date

Closures remaining



Generally open - traffic restrictions at times

Estimated Green Line Viaduct closure

October 1, 2020



massDOT
Massachusetts Department of Transportation

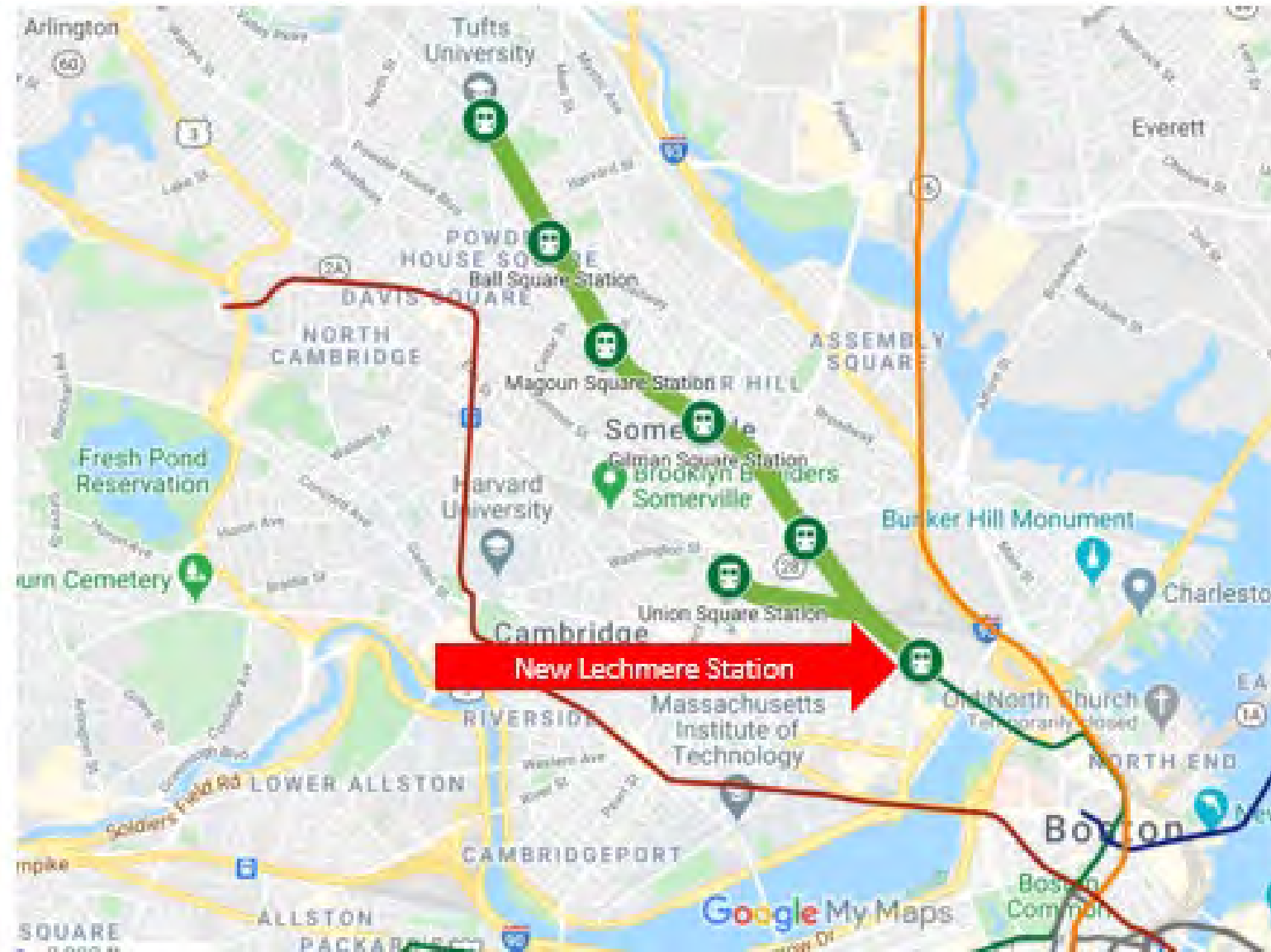




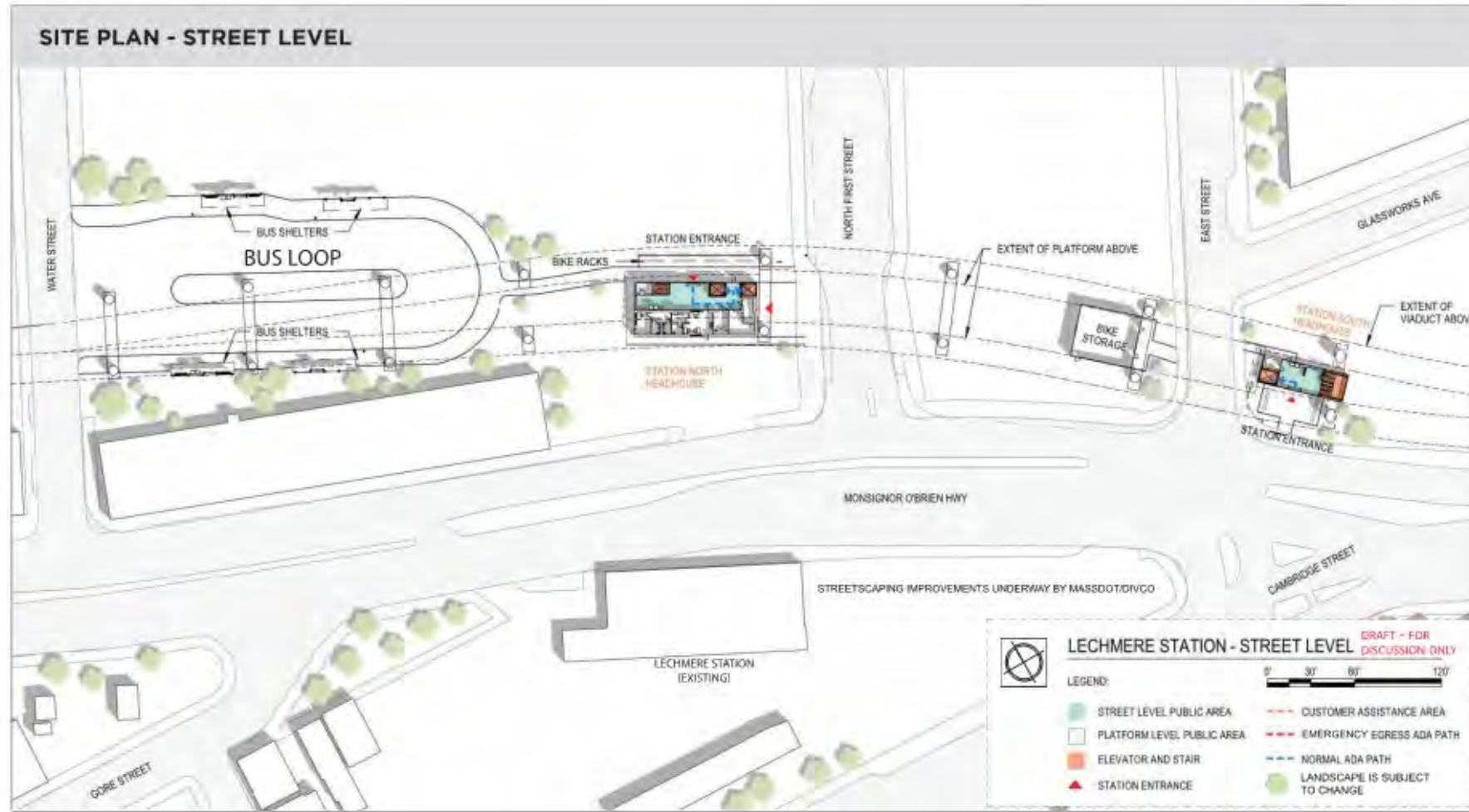
➤ Site Tour



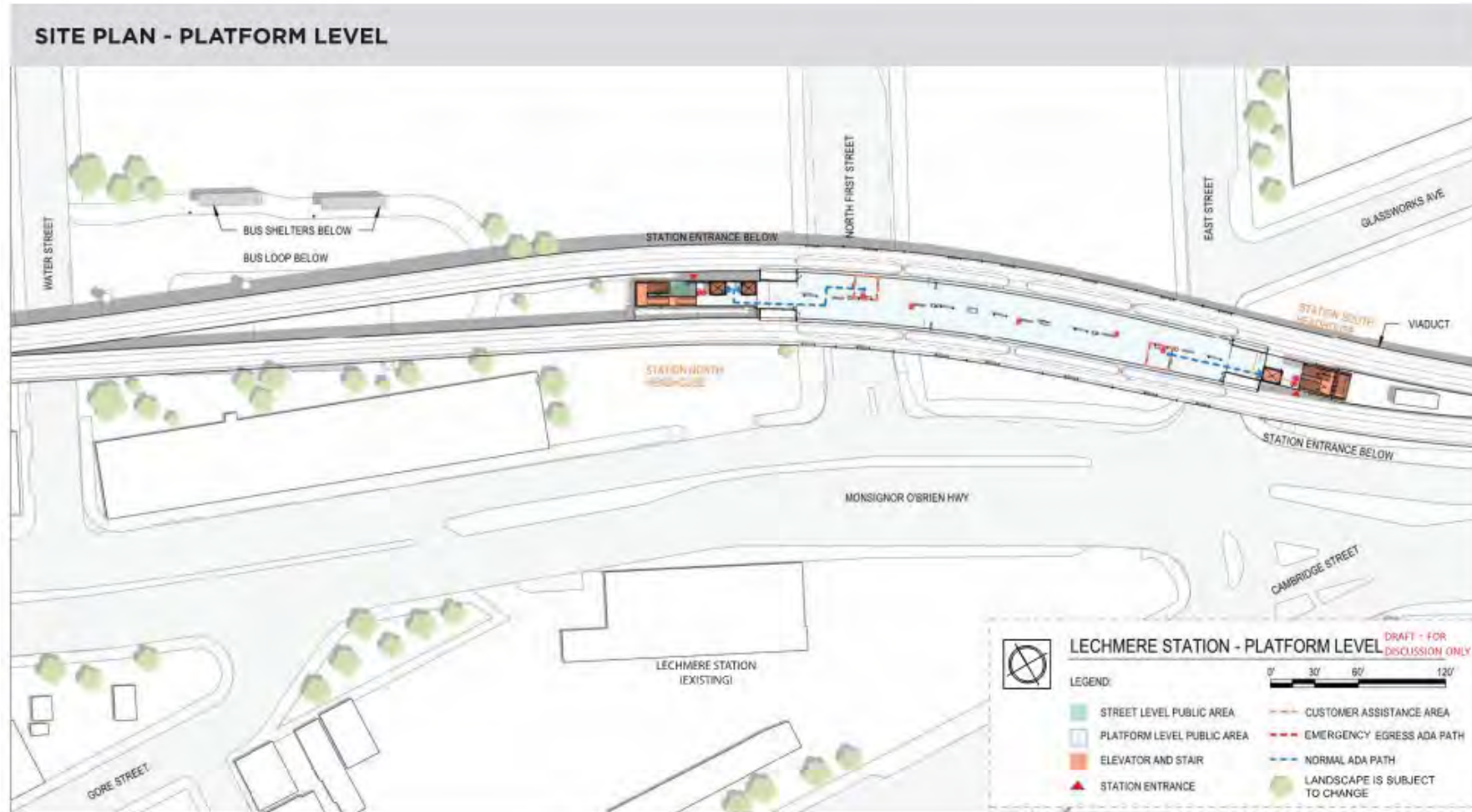
New Lechmere Station



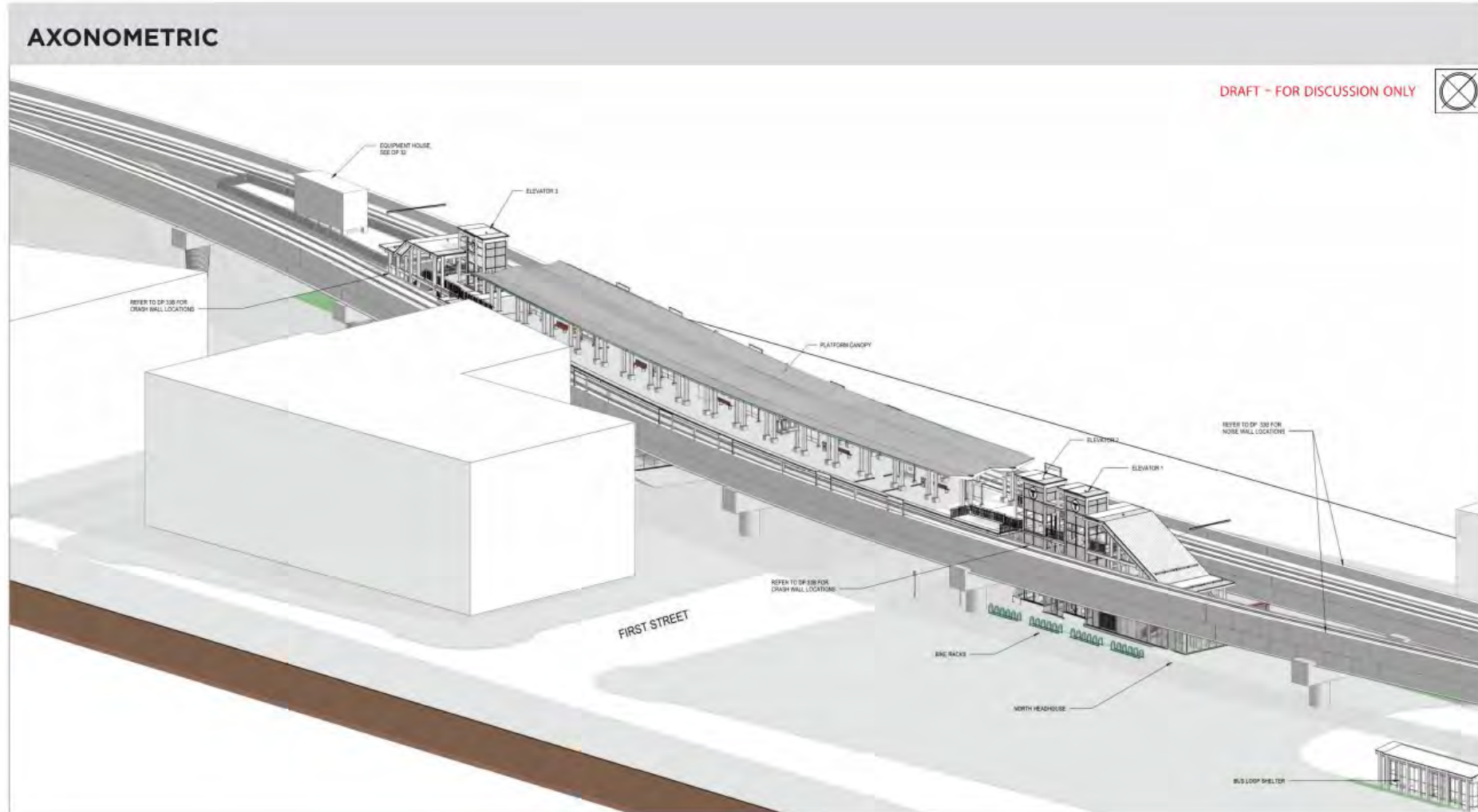
Station Construction - Lechmere



Station Construction - Lechmere (2)



Station Construction - Lechmere (3)



Station Construction - Lechmere (4)



Lechmere Station – Summer 2020



Station Construction – Lechmere (5)

General Overview

- Located on viaduct on the north side of Monsignor O'Brien Highway.
- Two Headhouses
 - North Headhouse on North First Street
 - South Headhouse on East St.
- Police Substation (272 SF)
- New bus loop with 4 bus shelters
- Bike Storage Capacity
 - 182 Covered
 - 72 Uncovered
- Platform dimensions
 - 32'- 35' X 355'
- Elevators (3)
 - 2 in North Headhouse
 - 1 in South Headhouse
 - Stairs in both Headhouses



Lechmere Station North Headhouse – November 2020

GLX Lechmere Viaduct Reconstruction



Newly constructed Lechmere Viaduct section facing inbound – October 2020



GLX Lechmere Viaduct Reconstruction (2)



June 2020



November 2020

GLX – New Lechmere Viaduct Section



Newly constructed Lechmere Viaduct section facing outbound – October 2020



Station Construction - Lechmere (6)



North Headhouse



North Headhouse opening (facing north)

2020 GLX Highlights

Governor Baker Tours GLX Project Lechmere Station – Oct. 8, 2020



massDOT
Massachusetts Department of Transportation

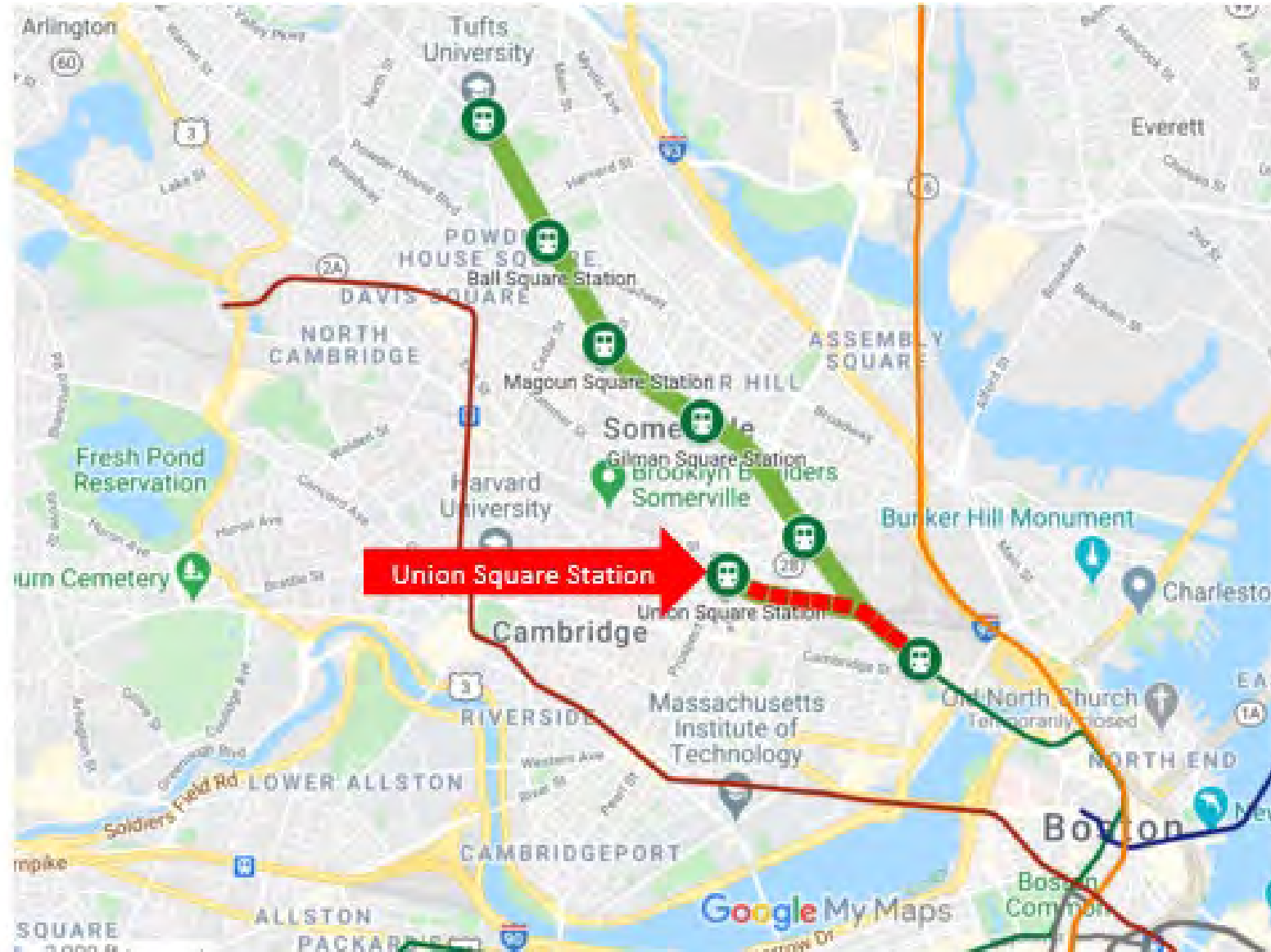


GLX New Lechmere Viaduct Section (2)

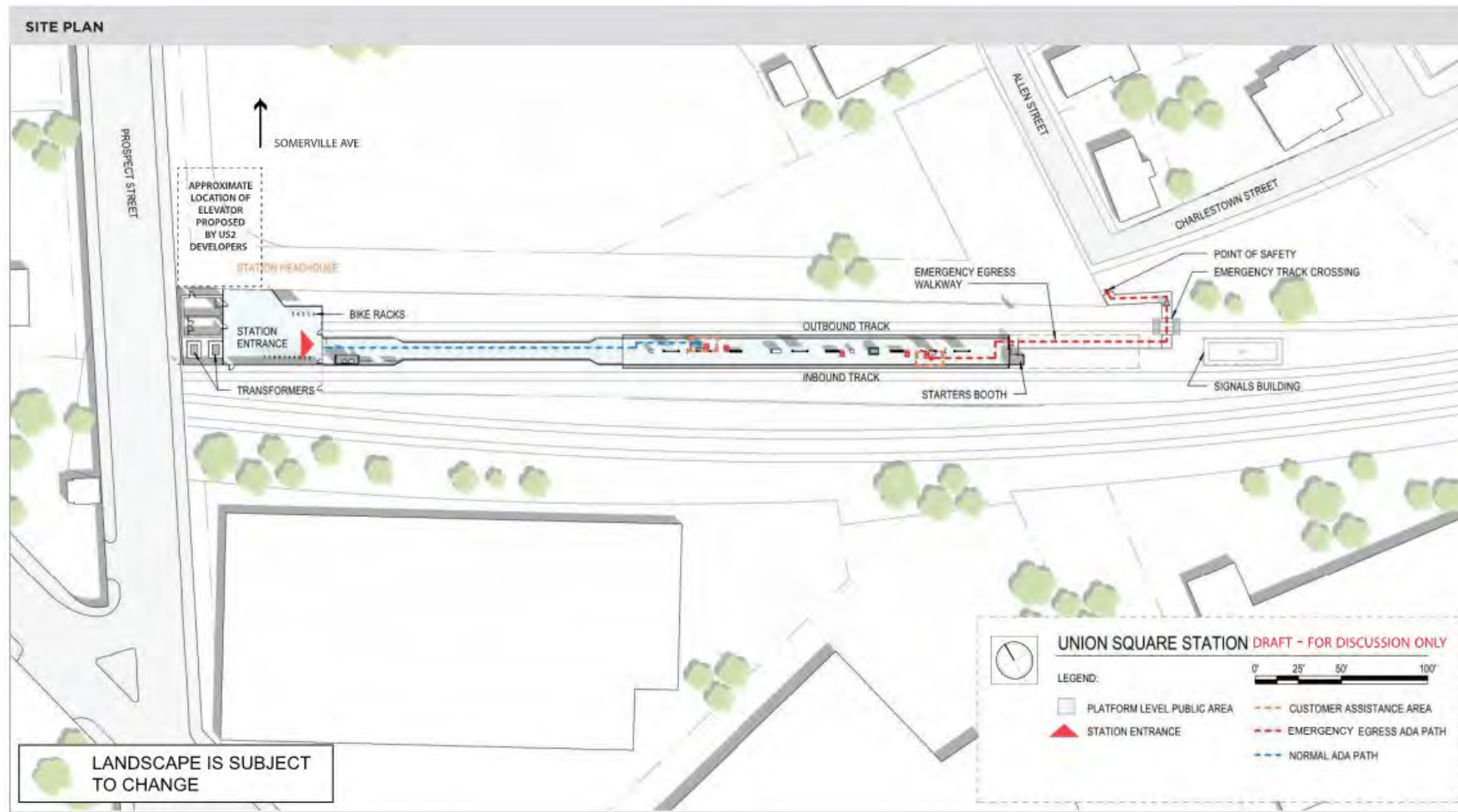


Facing south toward Water Street – November 2020

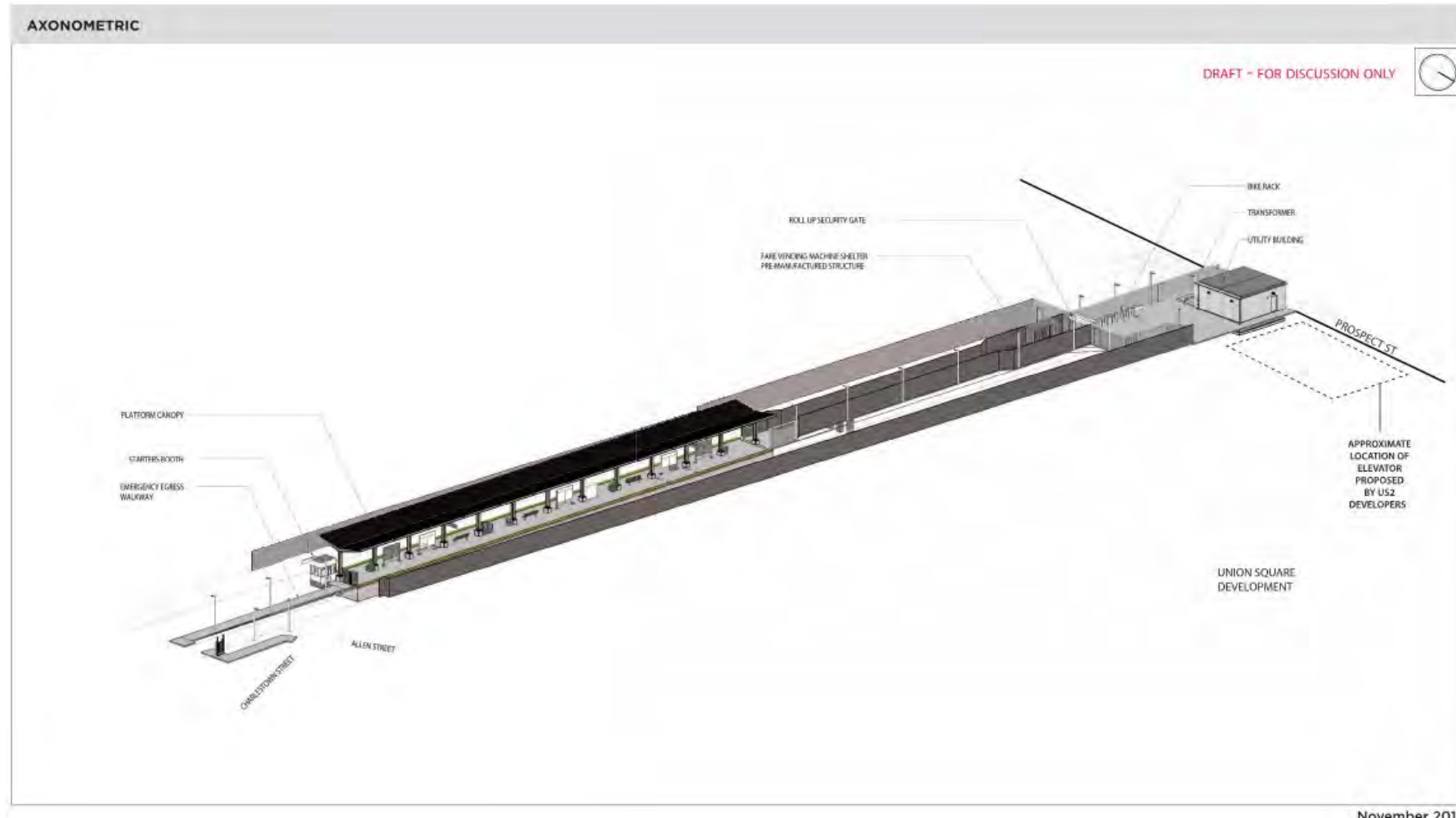
Union Square Station



Station Construction – Union Square



Station Construction – Union Square (2)



Station Construction – Union Square (3)

General Overview

- At grade entrance off Prospect Street/Bennet Court
- Platform canopy over station platform
- Platform dimension 20' X 225'
- Emergency egress pathway to Allen Street
- Two customer assistance areas on platform with an emergency call box
- Two transformers at the station
- Single elevator from Prospect Street to be constructed by adjacent developer and operated and maintained by MBTA E&M
- Covered storage for 86 bikes and uncovered storage for 34 bikes to be coordinated with developer
- Five platform benches



Union Square Station platform facing Prospect Street – November 2020

Station Construction – Union Square (4)



Union Square Station platform. Steel placement for canopy underway. Light rail tracks in place. November - 2020

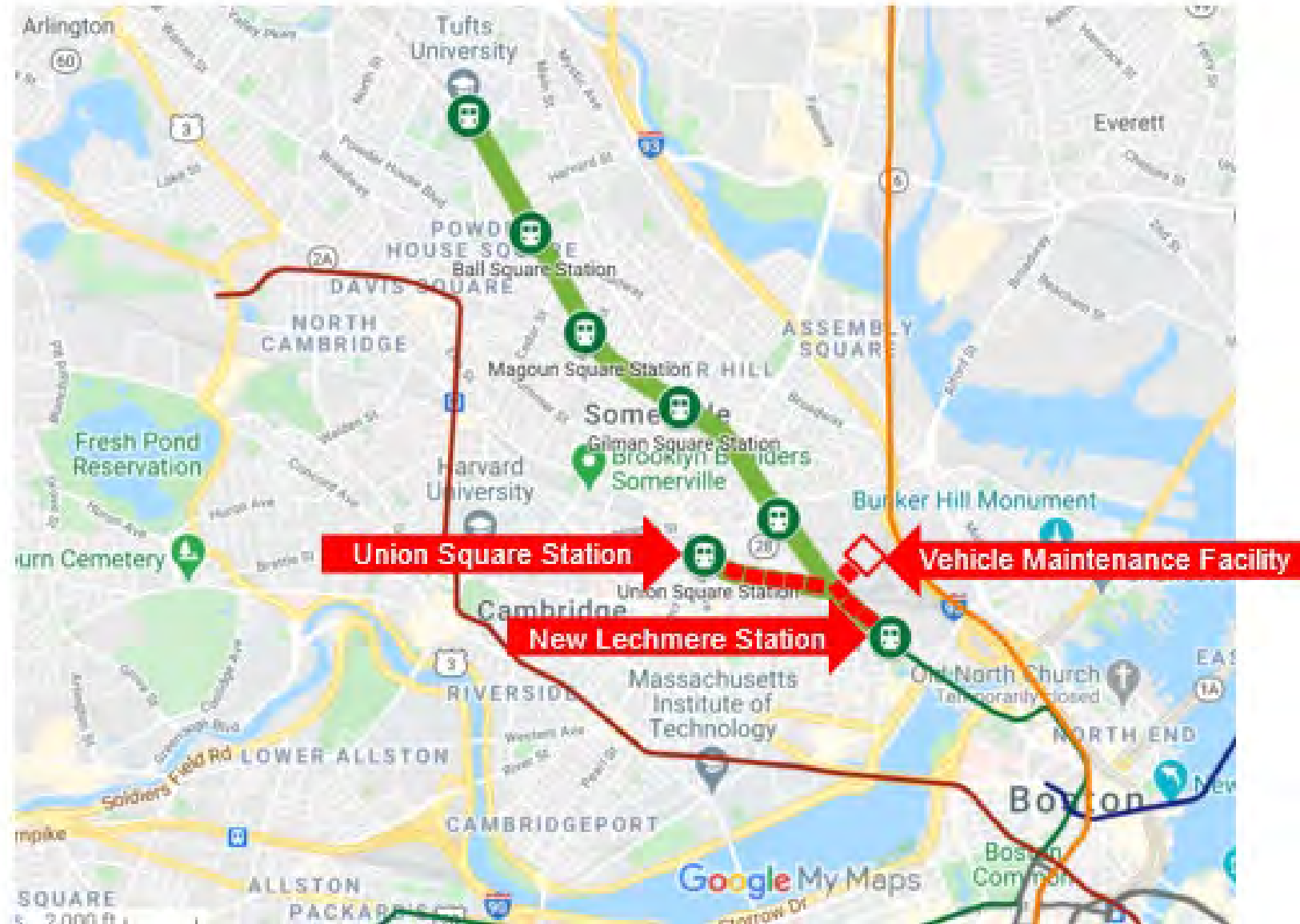


Station Construction – Union Square (5)



Track installation just east of Union Square Station (facing east/inbound)

GLX Project Area (4)



Vehicle Maintenance Facility



Vehicle Maintenance Facility (2)



November 2018



massDOT
Massachusetts Department of Transportation

53



GLX General Public Meeting
Project Update
December 9, 2020

Vehicle Maintenance Facility (3)



March 2019



massDOT
Massachusetts Department of Transportation

54



GLX General Public Meeting
Project Update
December 9, 2020

Vehicle Maintenance Facility (4)



November 2020



massDOT
Massachusetts Department of Transportation

55



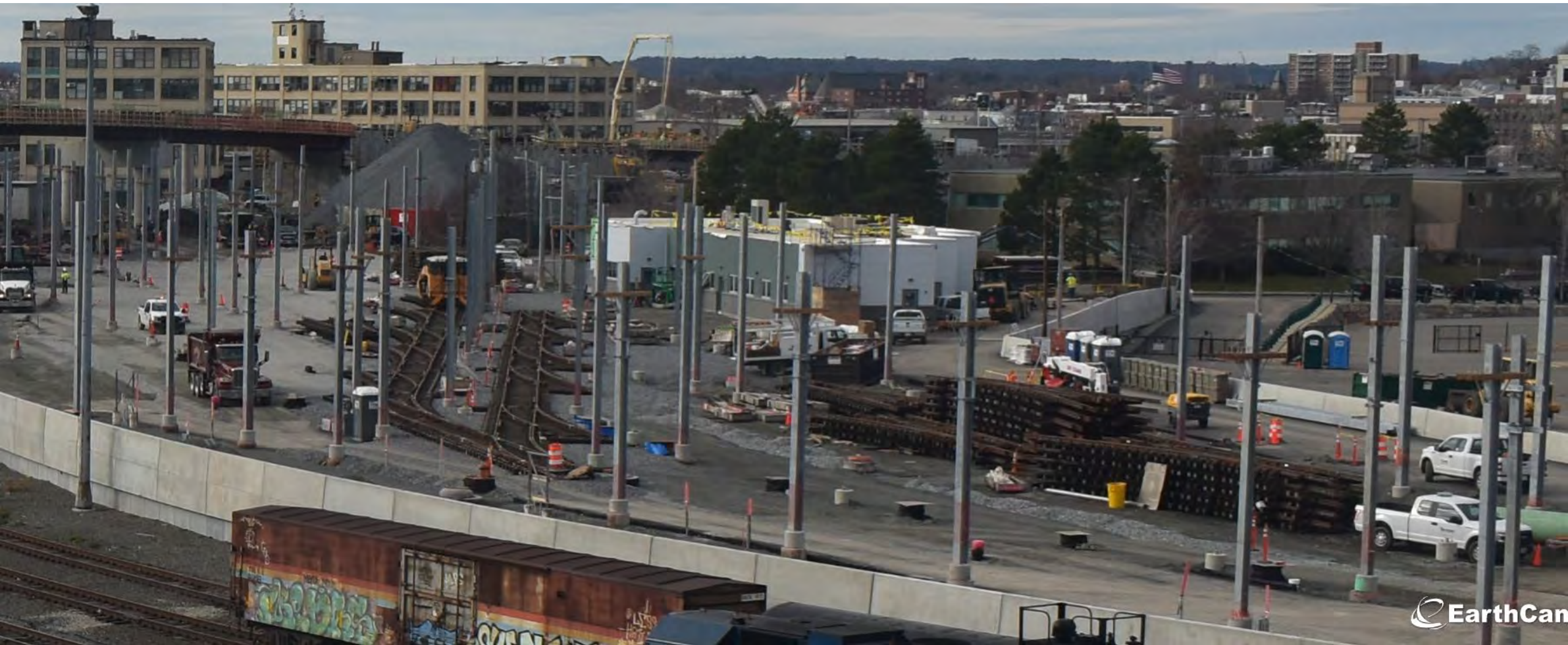
GLX General Public Meeting
Project Update
December 9, 2020

Vehicle Maintenance Facility (5)



Vehicle Maintenance Facility Interior

Transportation Office Building



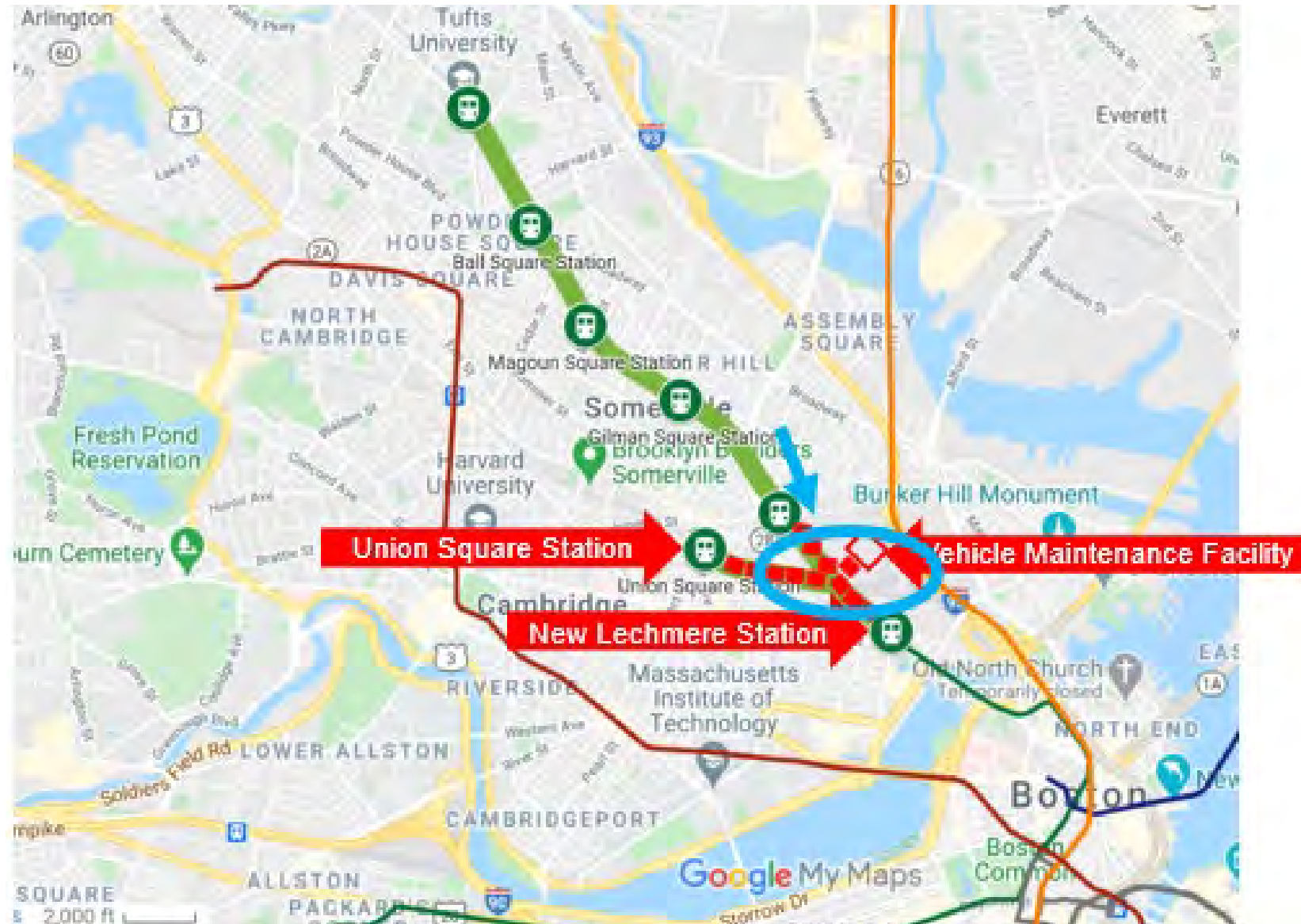
massDOT
Massachusetts Department of Transportation

57



GLX General Public Meeting
Project Update
December 9, 2020

GLX Project Area (5)



Red Bridge Viaducts Area



Red Bridge Area – September 2019



massDOT
Massachusetts Department of Transportation



Red Bridge Viaducts Area (2)



Red Bridge Area – October 2020



massDOT
Massachusetts Department of Transportation



Traction Power Substation Status



Red Bridge Traction Power Substation – October 2020



Fitchburg/Red Bridge Viaduct



Viaduct Concrete Decking Nearly Complete – November 2020



Lechmere / Red Bridge Viaduct



Mechanically Stabilized Earth (MSE) walls near completion - November 2020

Fitchburg/Red Bridge Viaduct (2)



Community Path Extension steel placement – November 2020



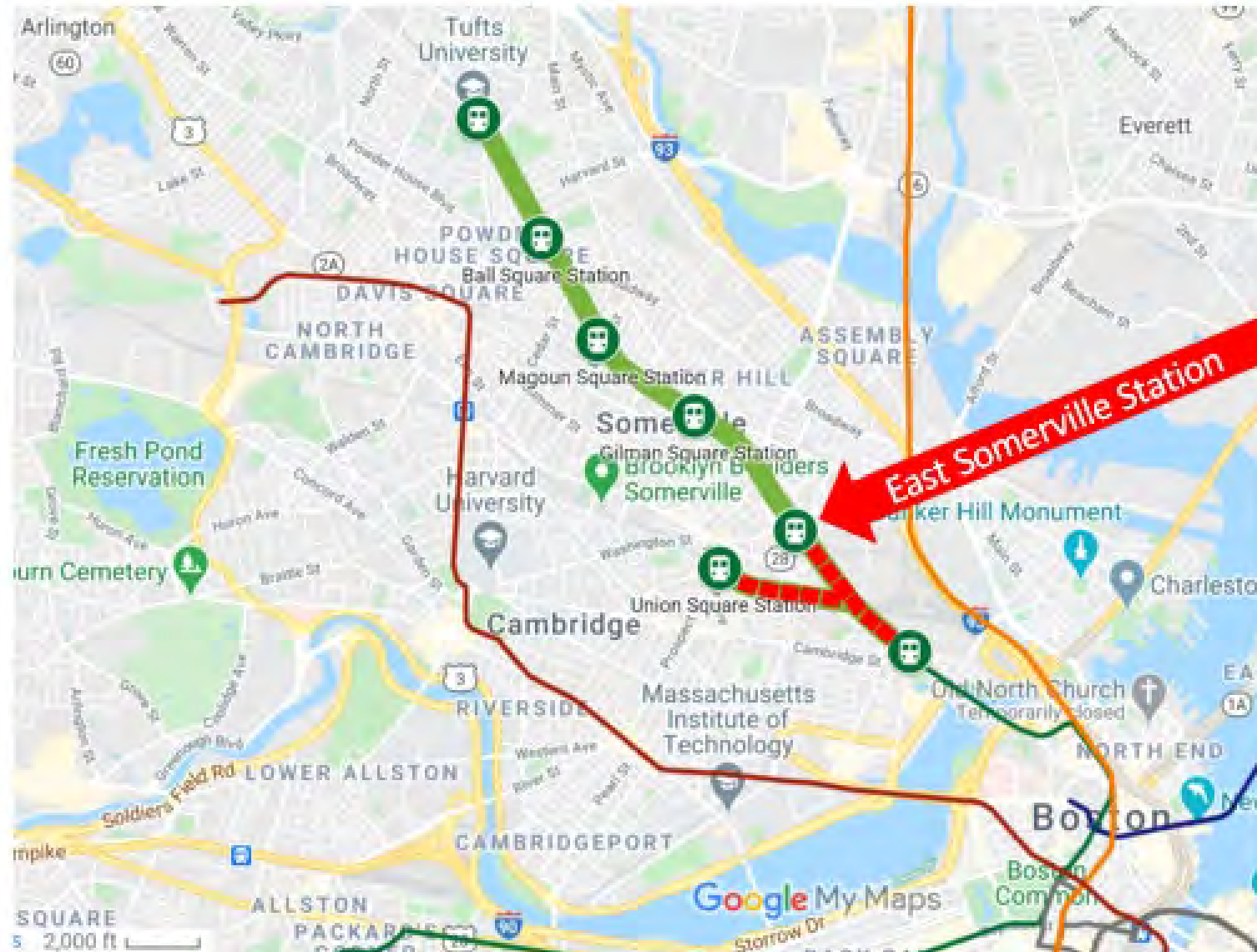
Fitchburg/Red Bridge Viaduct (3)



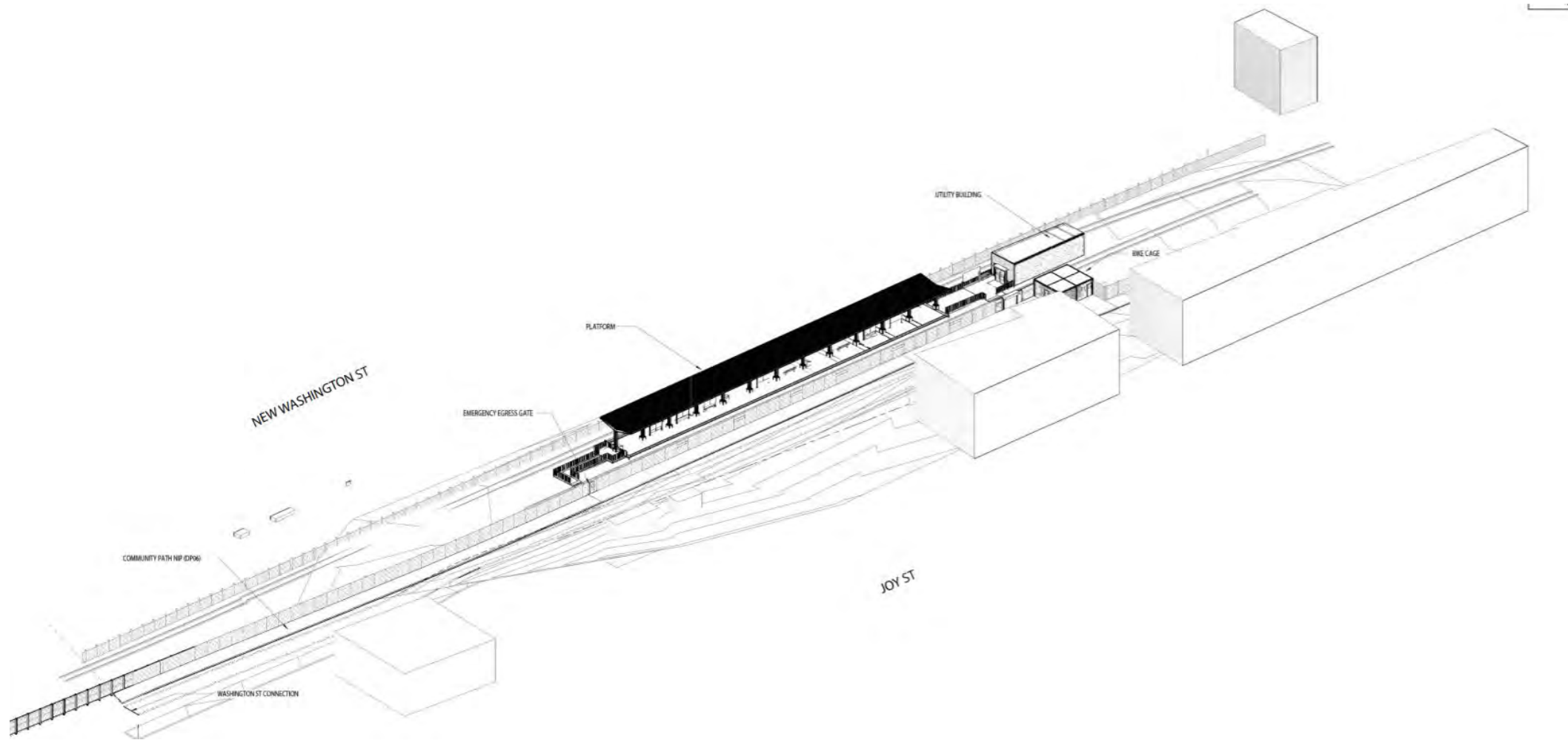
Community Path Extension – October 2020



East Somerville Station



Station Construction – East Somerville



East Somerville Station platform axonometric view

Station Construction – East Somerville (2)

Description

- Station is accessed from Washington Street Access Path with a connection to the Community Path
- Platform dimension 20' X 225'
- Full platform canopy
- Covered bike storage of 52 plus 20 uncovered
- Two customer assistance areas with an emergency call box
- Emergency egress walkway to emergency track crossing to community path
- Access path 10' wide, 5 station benches
- Present nearby bus routes include: 86, 91 & CT-2
- Major scope item in this area has been the reconstruction of the Washington Street Bridge



November 2020



massDOT
Massachusetts Department of Transportation



Station Construction – East Somerville (3)



East Somerville Station platform concrete placement – November 2020

Washington Street Bridge



August 2018



Reopened May 31, 2020

Washington St. Construction

- North sidewalk is now open
- Temporary sidewalk to be closed while work progresses on south sidewalk

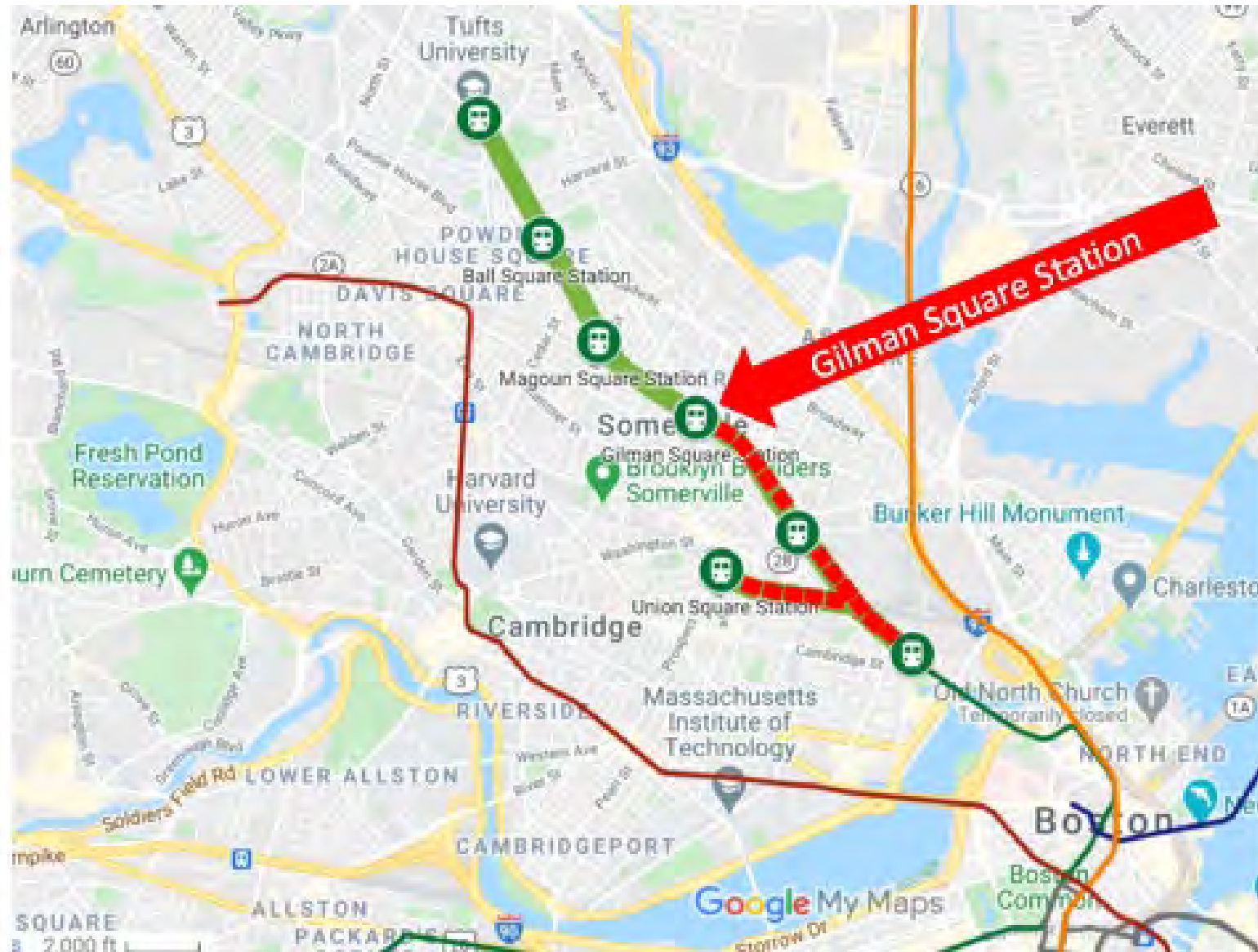


Washington Street Bridge (2)



Washington Street Bridge from above facing north - October 2020

Gilman Square Station



Station Construction – Gilman Square



School Street Bridge entrance – Artist Rendering

Station Construction – Gilman Square (2)

Station Overview

- Two station headhouses, one at School Street and one from the Community Path between Medford and School Streets
- Each entrance features 1 elevator and 1 staircase
- Full platform canopy
- Platform dimensions 20' X 225'
- Covered bike storage for 100 plus 40 uncovered
- Access path 10' wide, 7 station benches
- Present nearby bus routes include 90, 88, and 80
- Traction power substation located across tracks from platform
- Two Customer Assistance Areas with an Emergency Call box
- Additional call box at Areas of Rescue Assistance in both headhouses



Site of future Gilman Square Station May 2018

Station Construction – Gilman Square (3)



From School Street looking south – May 2018



From School Street looking south – October 2019

Station Construction – Gilman Square (4)



From School Street looking south - October 2020

Station Construction - Gilman Square (5)



From School Street looking south - November 2020

Traction Power Substation Status (2)



Pearl Street Traction Power Substation – Gilman Square – October 2020

School St. Bridge Modification



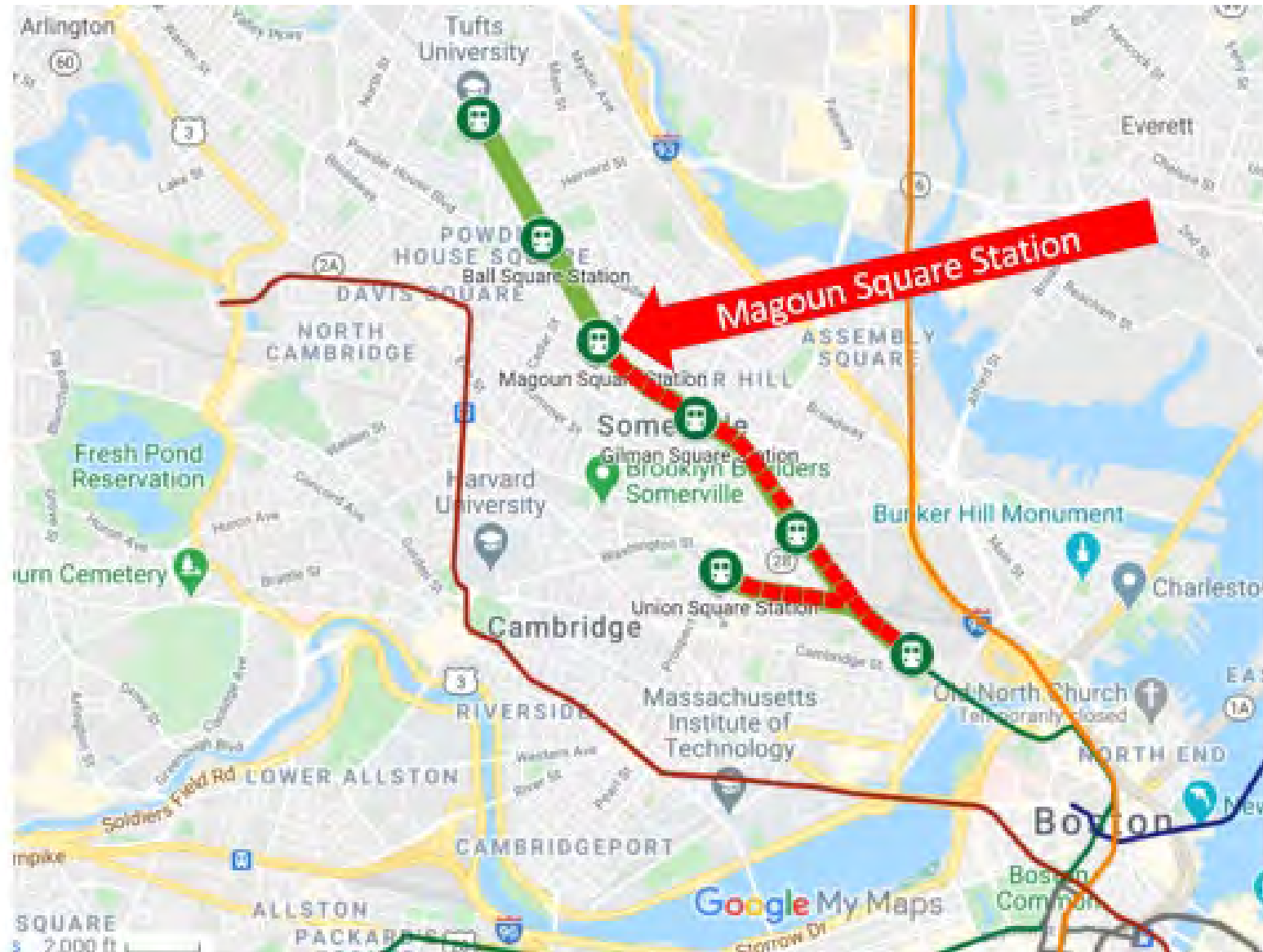
School Street Bridge facing north toward Magoun Square – November 2020



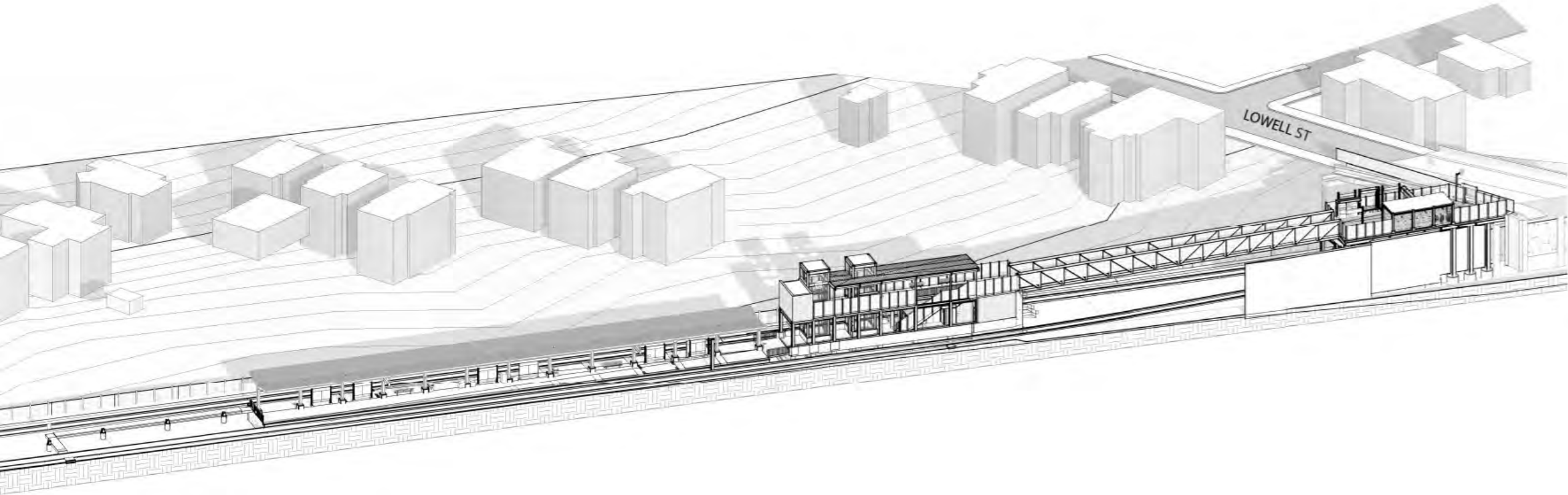
Medford St. Bridge Modification



Magoun Square Station



Station Construction – Magoun Square



Magoun Square platform axonometric view



Station Construction – Magoun Square (2)

Station Overview

- Station access is from Lowell Street Bridge via a 146', single span pedestrian bridge with missile barriers
- There are 2 elevators in the adjoining headhouse and 1 staircase
- Platform dimension is 22.5' X 225' with 5 benches and full canopy
- Covered bike capacity of 36 with 16 uncovered
- Two Customer Assistance Areas and 1 emergency call box
- Emergency egress dispersal path at north end of platform to Murdock Street



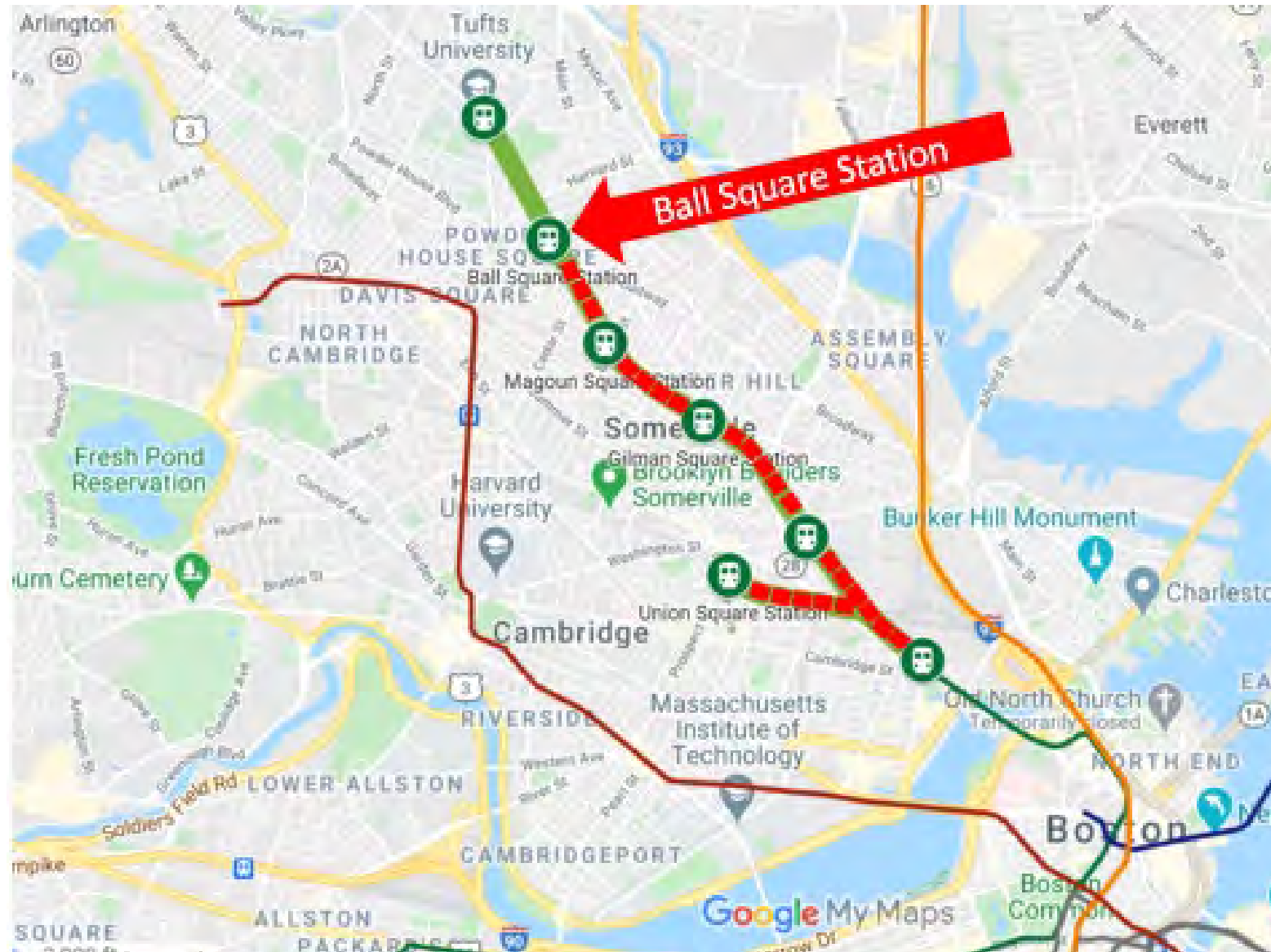
Magoun Square Platform foundation facing south – November 2020

Station Construction – Magoun Square (3)

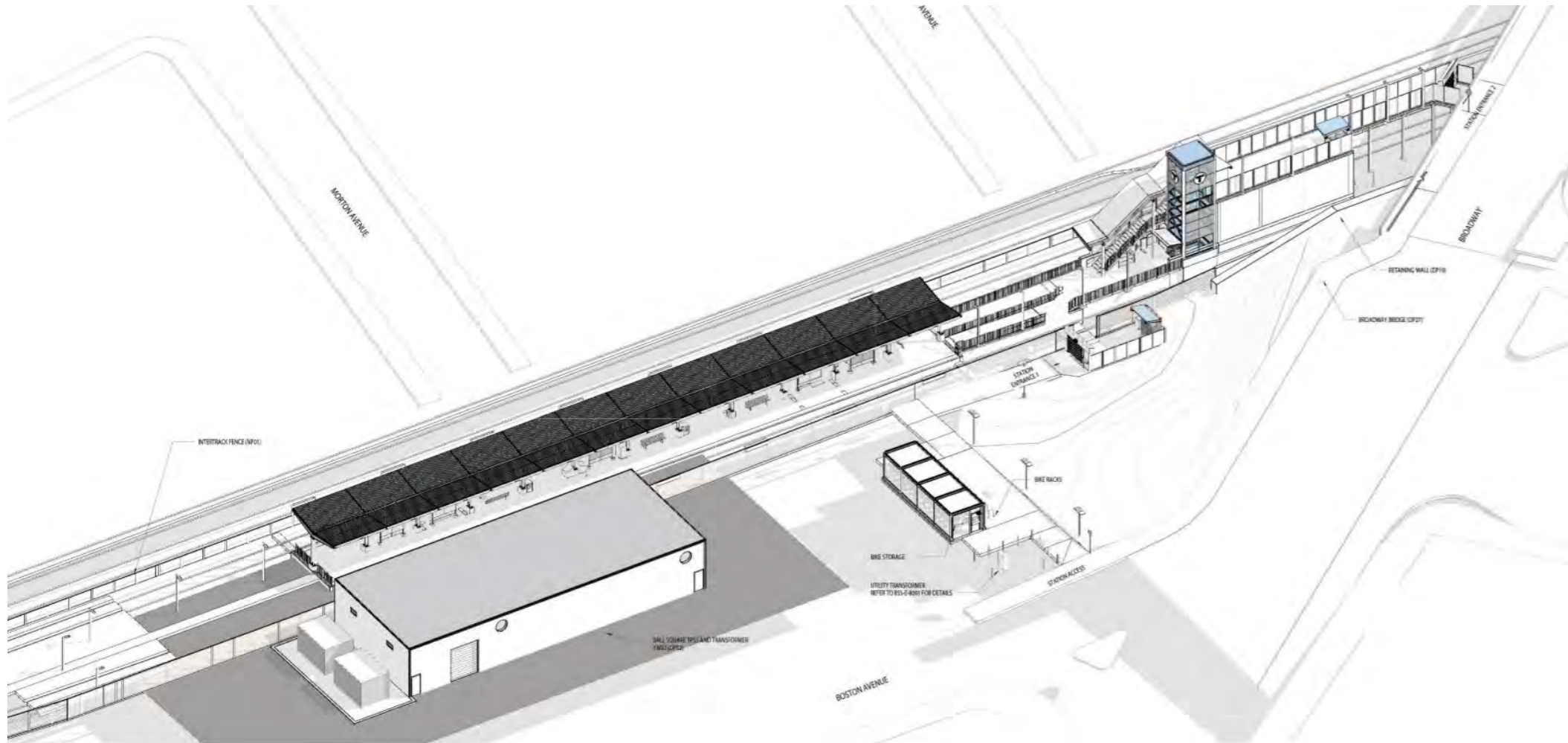


Magoun Square platform foundation facing north toward Ball Square

Ball Square Station



Station Construction – Ball Square



Ball Square Station platform axonometric view

Station Construction – Ball Square (2)

Station Overview

- At-grade entrance at Boston Avenue plus 1 staircase and 1 elevator from Broadway Bridge
- Includes 1 traction power substation and 2 transformers
- Platform dimension 22' X 225' with full platform canopy and 5 benches
- Covered bike storage for 50 plus 20 uncovered
- Two customer assistance areas with an emergency call box
- Emergency egress at north end of platform with secure path to Boston Avenue
- Present nearby bus routes include 88 and 80



Ball Square Station platform facing south toward Broadway Bridge – November 2020

Station Construction – Ball Square (3)



Ball Square Station platform foundation – facing north toward Medford/Tufts. October 2020



Ball Square – Broadway Bridge Construction



March 23, 2019



May 21, 2020



massDOT
Massachusetts Department of Transportation



Broadway Bridge Construction



Broadway Bridge facing south – December 4, 2020



massDOT
Massachusetts Department of Transportation



Bridge Construction Status

Broadway Bridge final surface restoration facing east



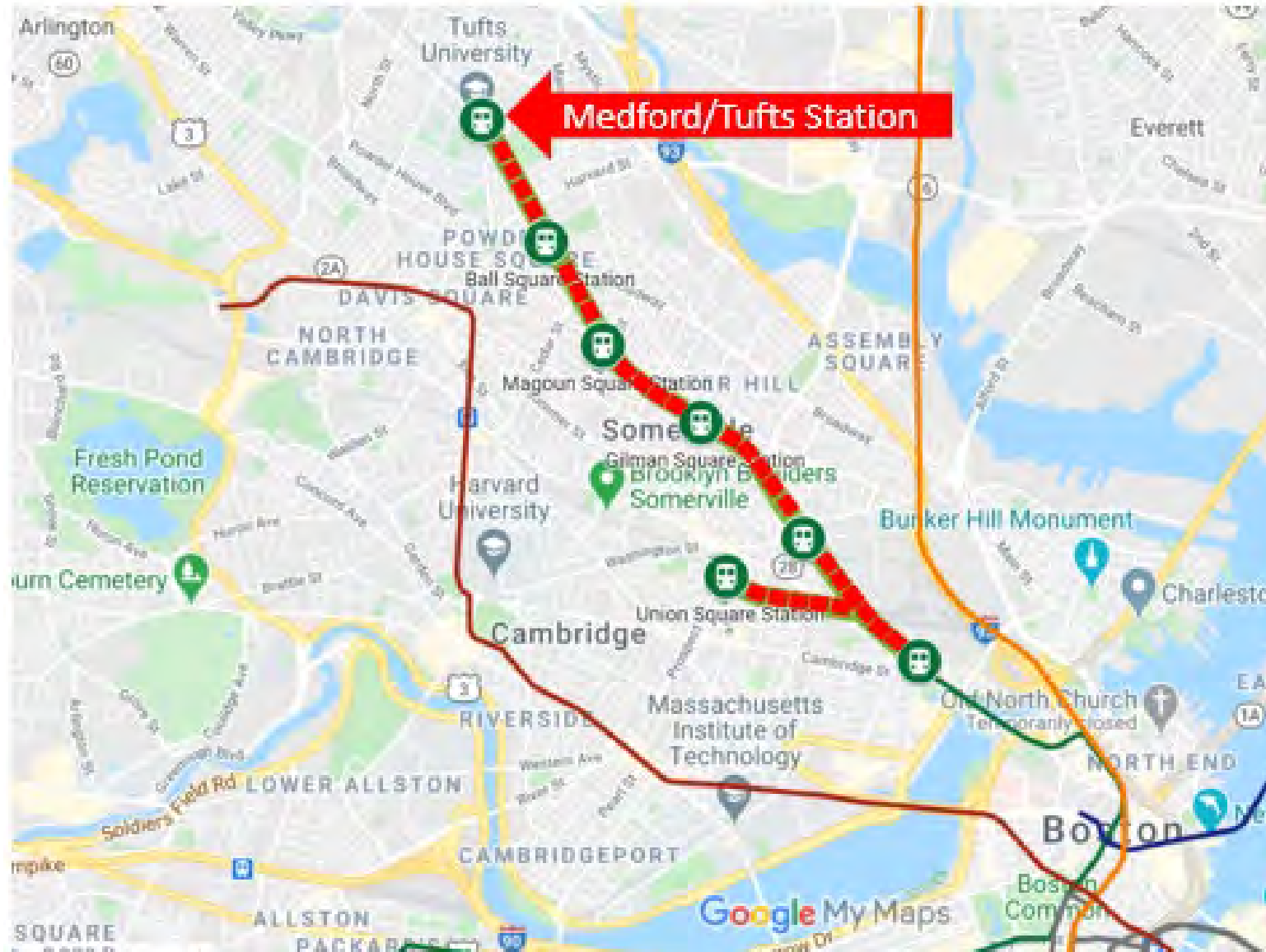
October 2020



massDOT
Massachusetts Department of Transportation



Medford/Tufts Station



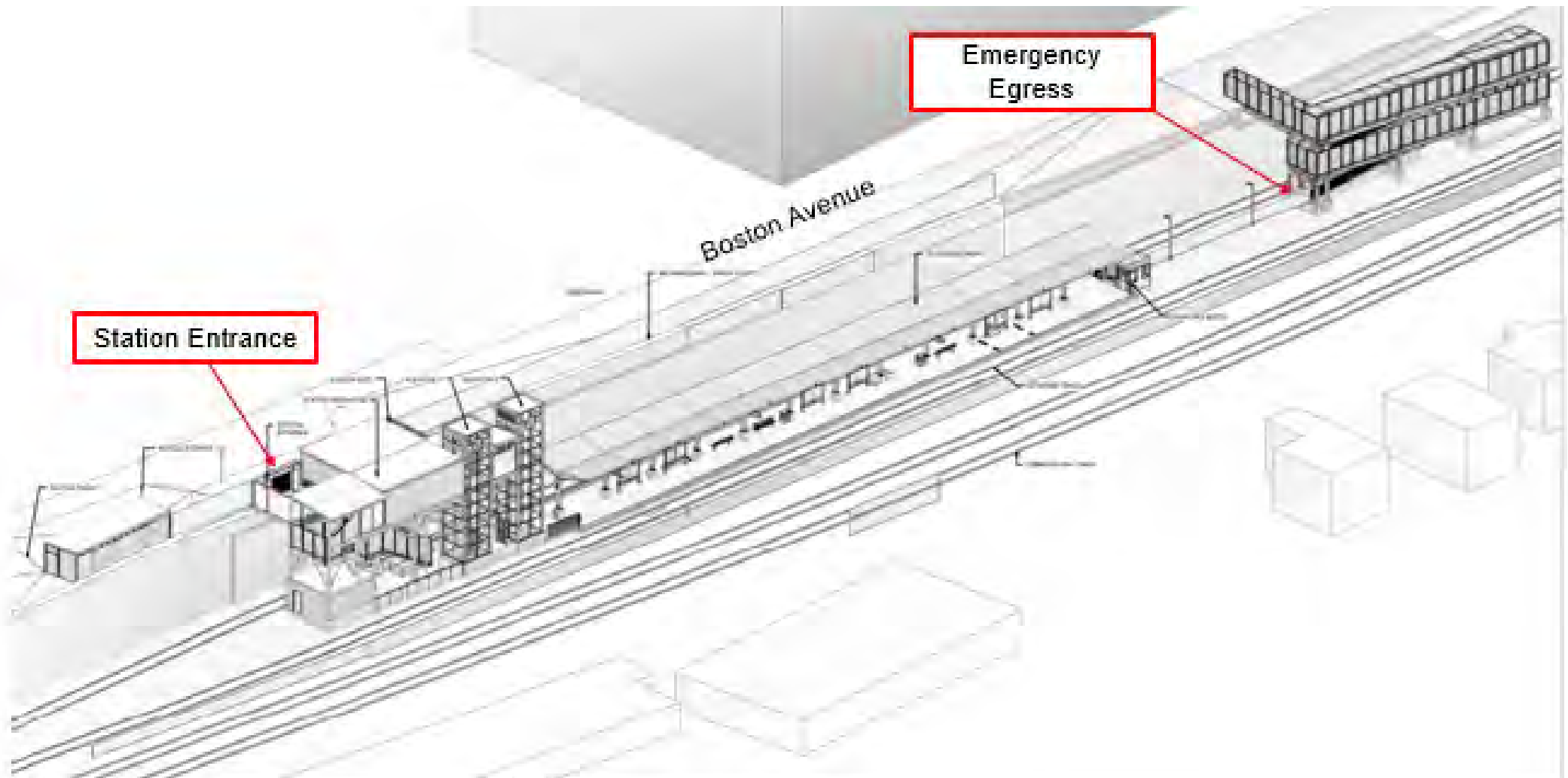
Station Construction – Medford/Tufts



Medford Tufts Station entrance rendering



Medford/Tufts Station (2)



Medford Tufts Station axonometric view



Station Construction – Medford/Tufts (2)

Station Overview

- Entrance off Boston Avenue with (2) elevators and stairs to platform level
- Platform features a full-length canopy and 5 benches.
- Platform dimension 22.5' X 225' with 2 Customer Assistance Areas and an emergency call box
- Emergency egress to Boston Ave via a switchback ramp at north end of platform
- Covered bike storage for 50 plus 20 uncovered
- The station includes a small drop-off area for the MBTA's *The Ride*
- Nearby buses include 96, 94 and 80



Station Construction – Medford/Tufts (3)



Site of future Medford Tufts Station platform facing south toward Boston – July 2019



Station Construction – Medford/Tufts (4)



Site of future Medford Tufts Station platform facing south toward Boston – October 2020



Station Construction – Medford/Tufts (5)



Site of future Medford Tufts Station platform facing north – October 2020



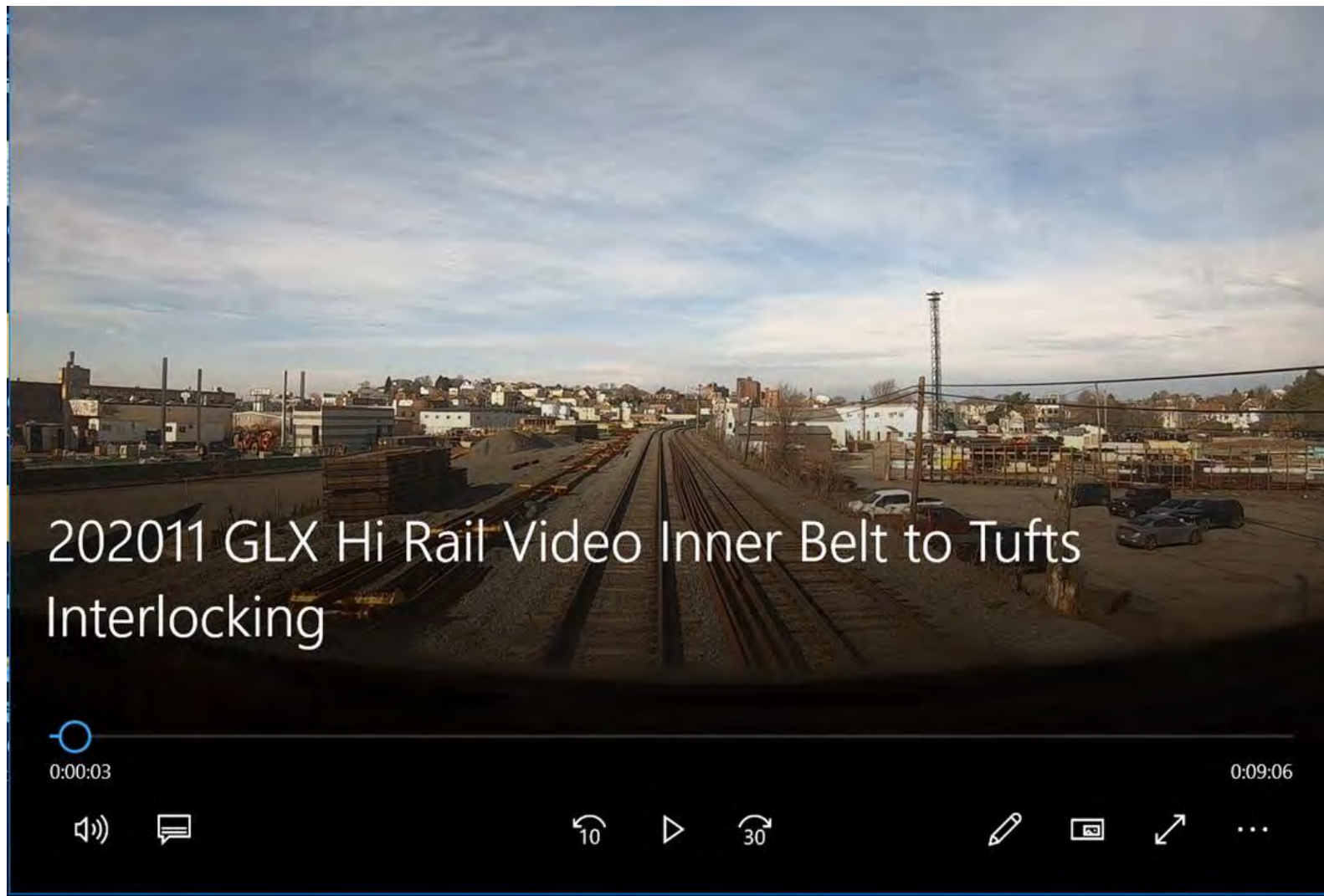
Busy Work Site



Community Connection Team



Video of Medford Branch



Q & A

