



GREEN LINE EXTENSION PROJECT



massDOT
Massachusetts Department of Transportation



GLX Project Public Meeting
June 24, 2020

Tonight's Virtual Meeting

MassDOT & MBTA Virtual Meeting Format

Thank you to the following:

- Cities of Cambridge Somerville & Medford
- Community Working Group
- State Delegation
- Impacted Abutters



COVID - 19

We are all in this together



Thank You to All Essential Workers

- Nurses, Doctors & Medical Care Workers
- First Responders
- MBTA Bus & Train Operators
- Grocery & Big Box Store Workers
- Many others like: Trash Collection, DPW Workers



Our Thoughts and Sympathy

- For all who have lost a loved one to the Corona Virus.
- And to the Family and Friends who are caring for a loved one.



GLX Project COVID-19 Safety

Protocols

GLX Project was deemed a State Essential Infrastructure Project

Approximately 400 Personnel working on the project on a daily bases

- Training - Social Distancing – Face shields – Masks – Handwashing Stations
- Job Site Signage
- 6 Confirmed Cases
- All 6 have returned to work
- Zero Deaths
- Supply Chain Issues



Public Comment & Concerns

What we are hearing from you

Primary Concerns:

- Nighttime noise
- Early starts
- Train horns
- Vibration
- Multi-Purpose Machine (Construction train)



Public Comment & Questions

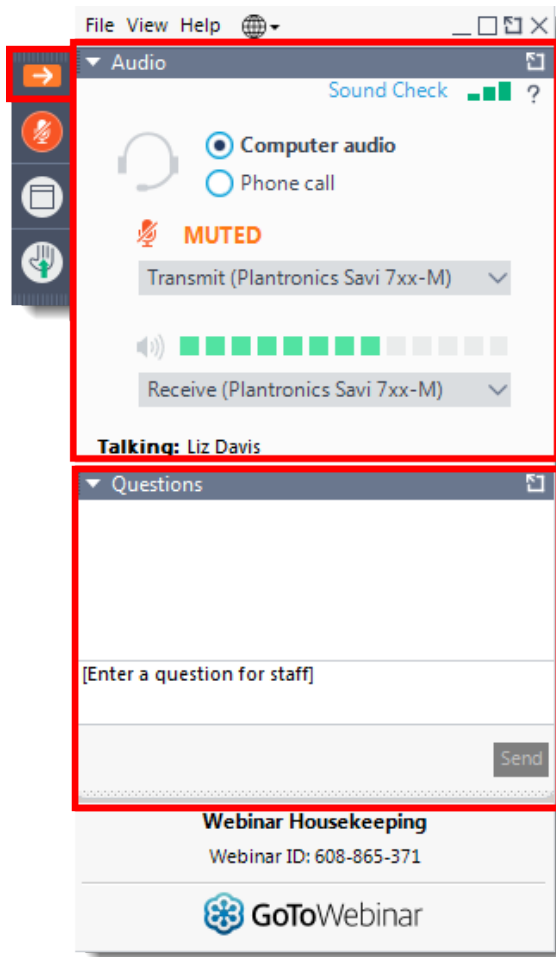
We would appreciate hearing from you

You Can:

1. Type a Question into the Webinar Question Box
2. Voice Mail 857-267-6125
3. Email info@glxinfo.com



Go-to-Webinar Housekeeping



Open and close your control panel

Join audio:

- Choose **Mic & Speakers** to use VoIP
- Choose **Telephone** and dial using the information provided
- You will be automatically be muted

Submit questions and comments via the Questions panel

For more information, please contact Erin Reed
ereed@hshassoc.com

*Tonight's virtual meeting is being recorded



Agenda

Welcome & Milestone Accomplishments

- John Dalton, MBTA / GLX Program Manager
- Terry McCarthy, DPM Stakeholder Engagement

Construction Update

- Jeff Wagner, Public Involvement Manager, GLX-C

Public Comments - Questions



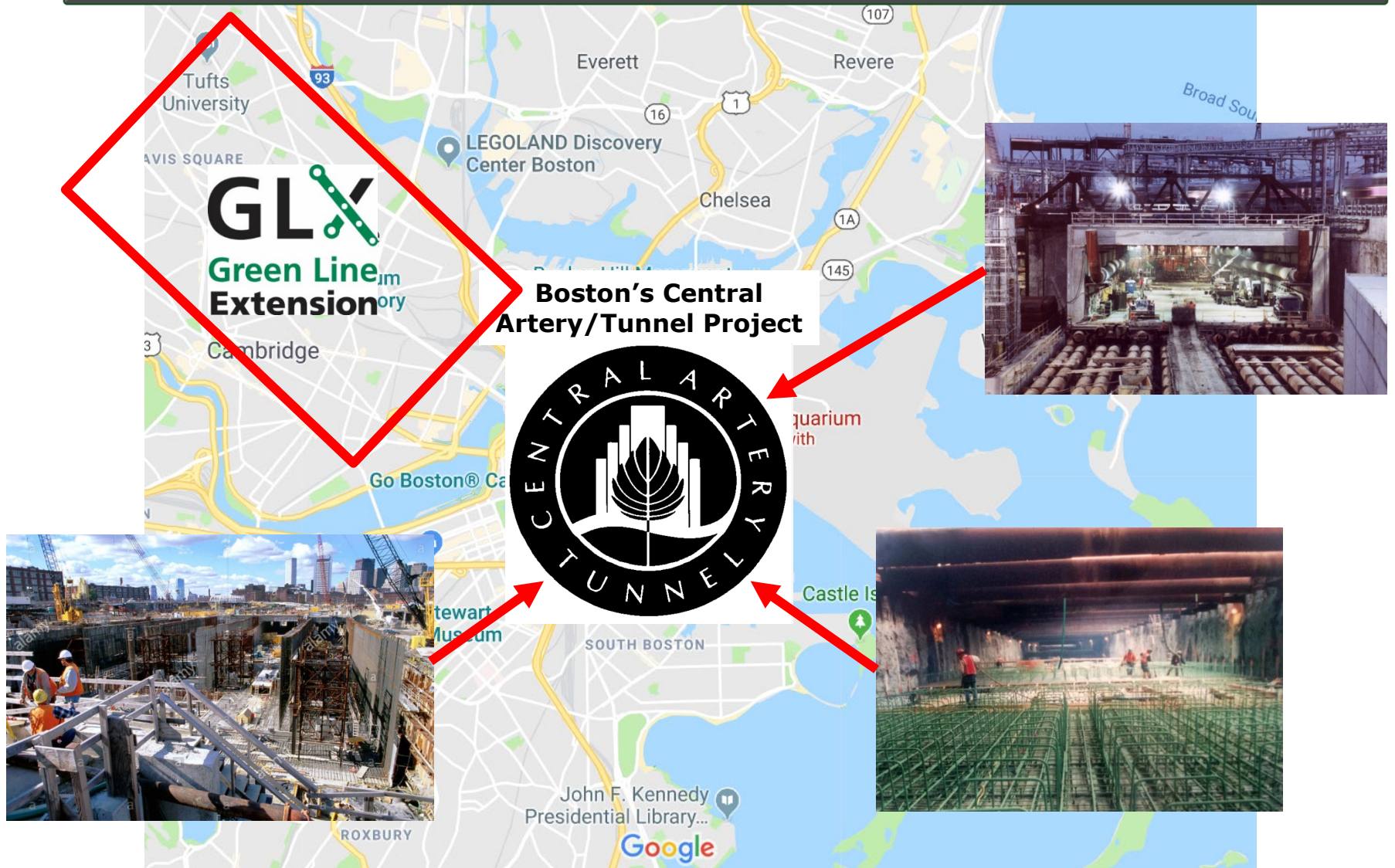


MBTA Project Highlights

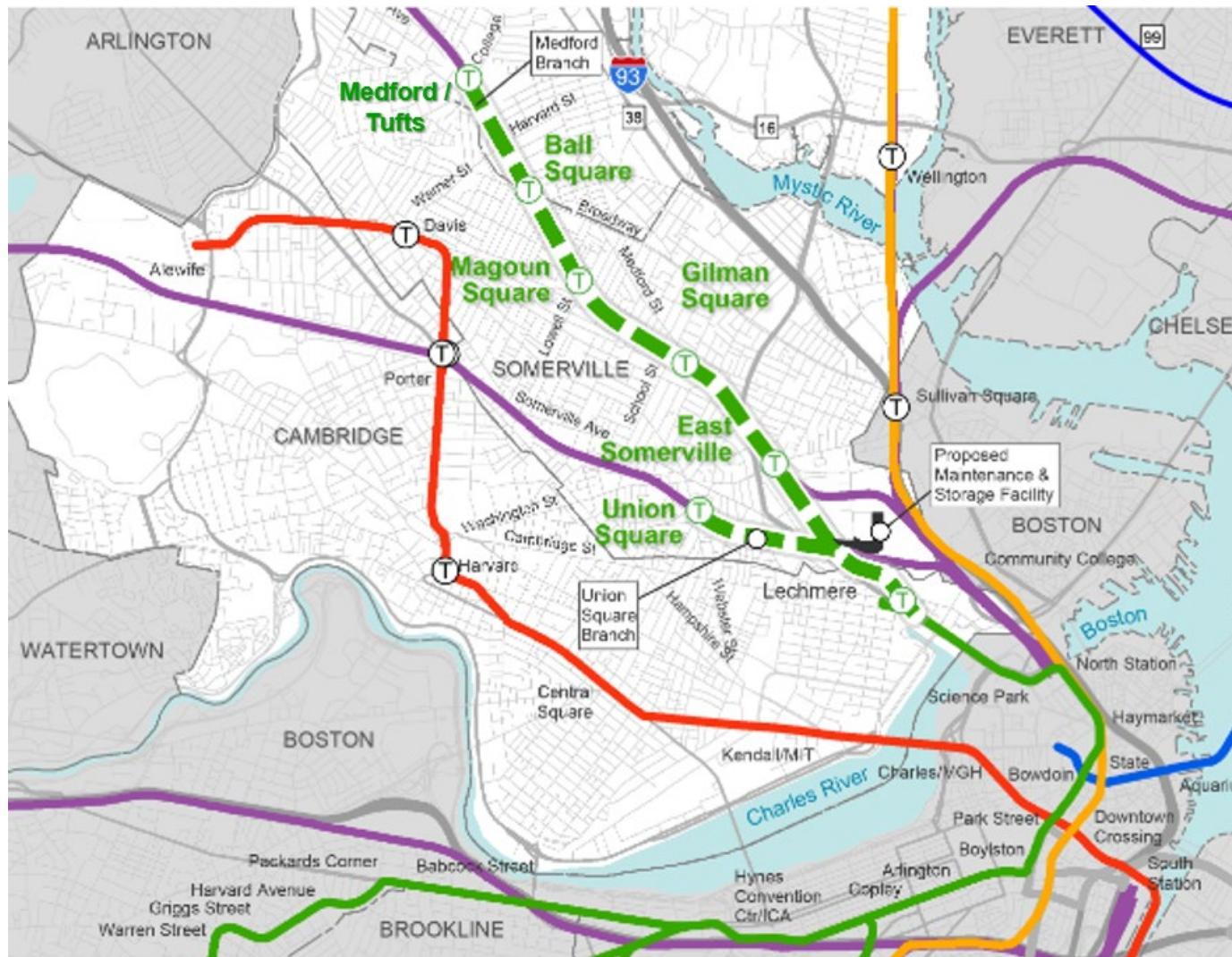
- John Dalton, MBTA/GLX Program Manager



Genesis of GLX Project



GLX Project Area

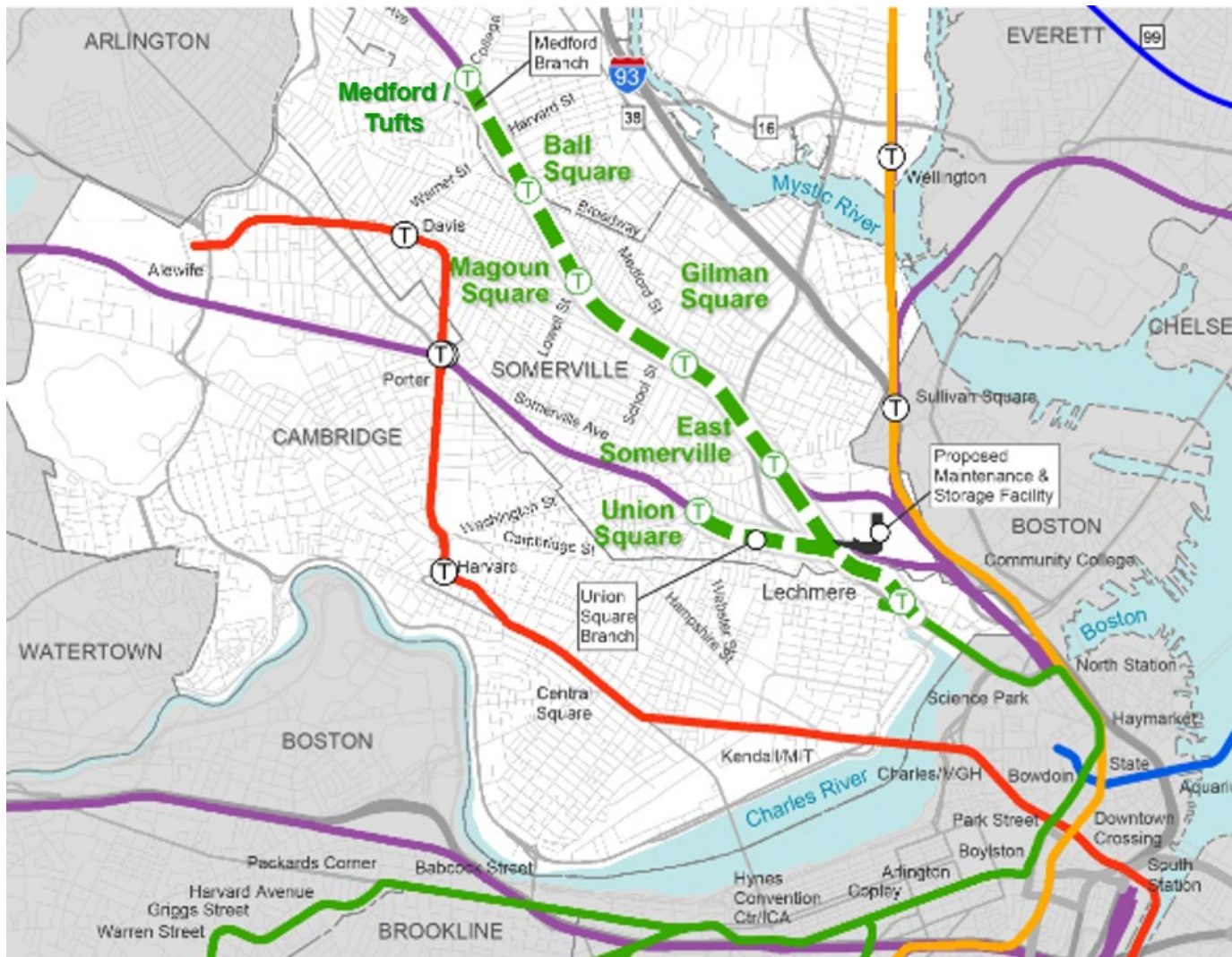


GLX Summary Fact Sheet

- **Seven light-rail GLX stations**
 - Relocated Lechmere Station
 - 5 on Medford Branch
 - 1 on Union Square Branch
- **Conforms with all environmental commitments and committed scope elements as established in the Full Funding Grant Agreement (FFGA)**
- **Includes a multiuse community path**
- **Procurement of 24 Green Line light rail vehicles**
- **Vehicle Maintenance Facility (VMF)**
- **Program Budget - \$2.3Bn**

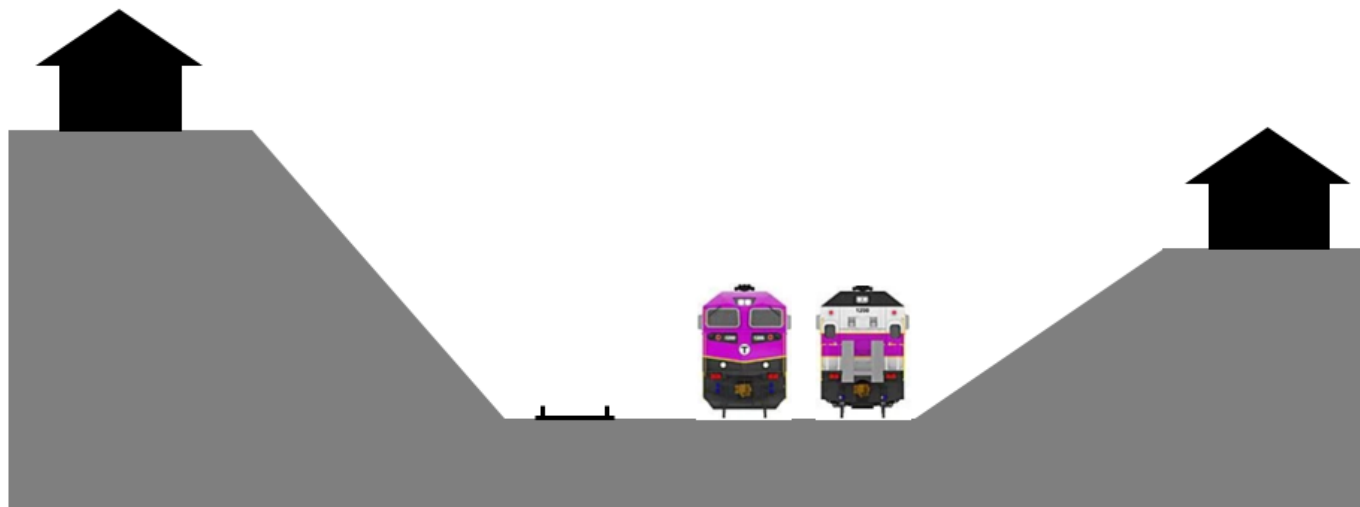


GLX Project Area



Construction Sequencing

*Original
Configuration*



Fall 2018



massDOT
Massachusetts Department of Transportation



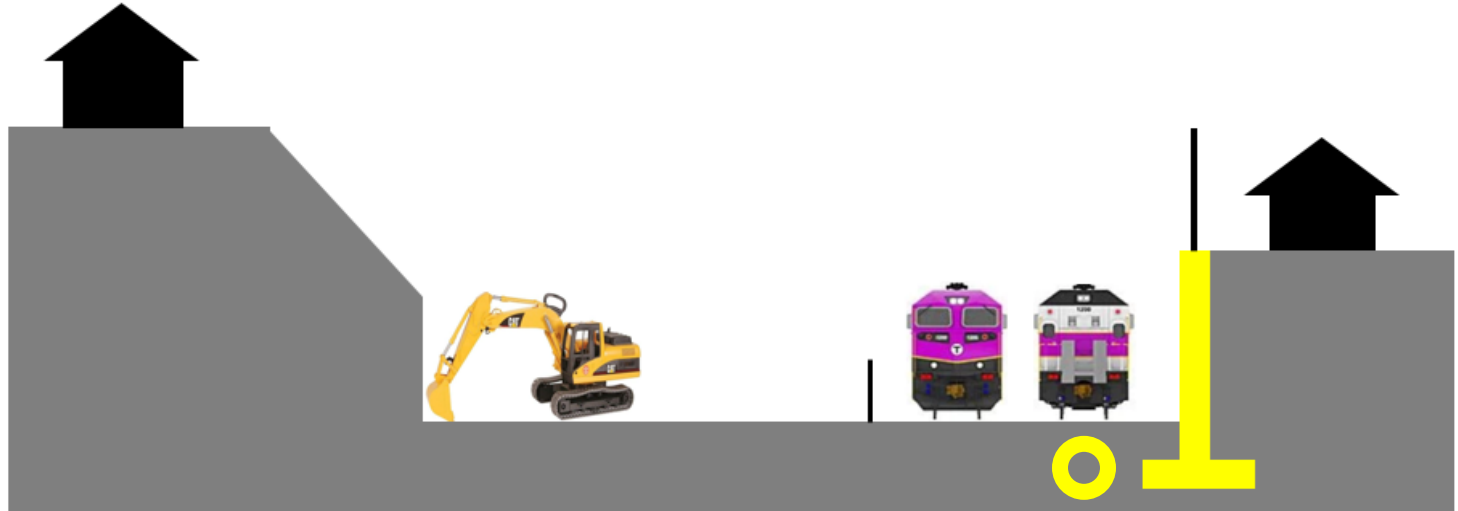
GLX Project Public Meeting
June 24, 2020

Construction Sequencing

Interim Configuration

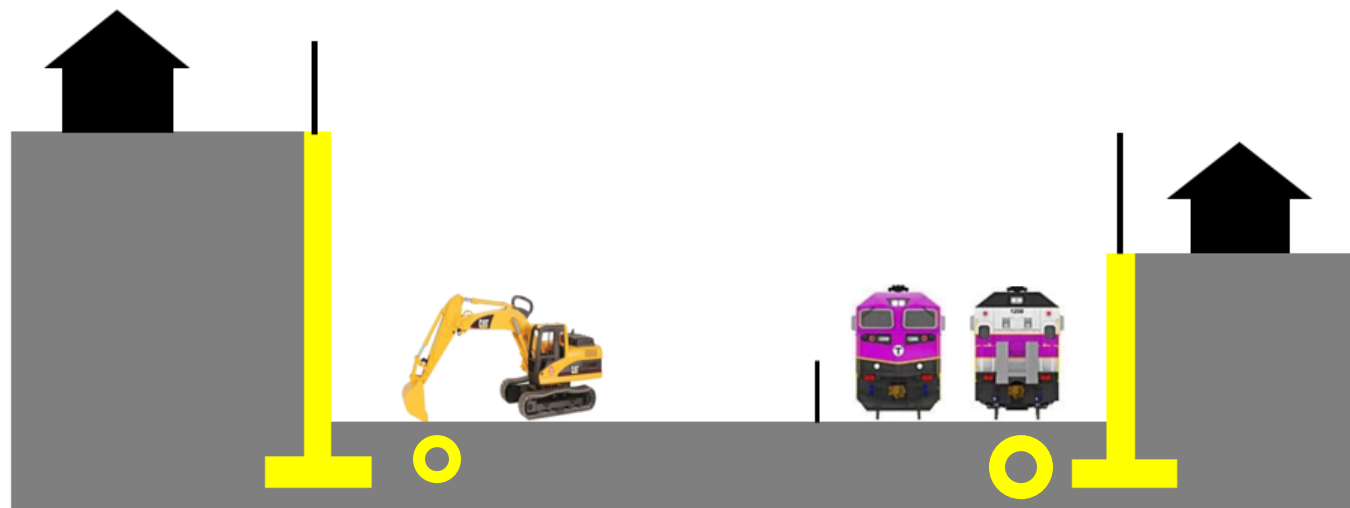


Summer 2020 Configuration



Construction Sequencing

2020 / 2021



*New
Green Line
In Service*



massDOT
Massachusetts Department of Transportation



GLX Project Public Meeting
June 24, 2020

Recent GLX Milestones

Lechmere Bus Replacement Service



Recent GLX Milestones con't

Lechmere Viaduct Demolition



Recent GLX Milestones con't 1

Lechmere Viaduct Demolition



Recent GLX Milestones con't 2

Broadway Bridge Reopening – June 7, 2020

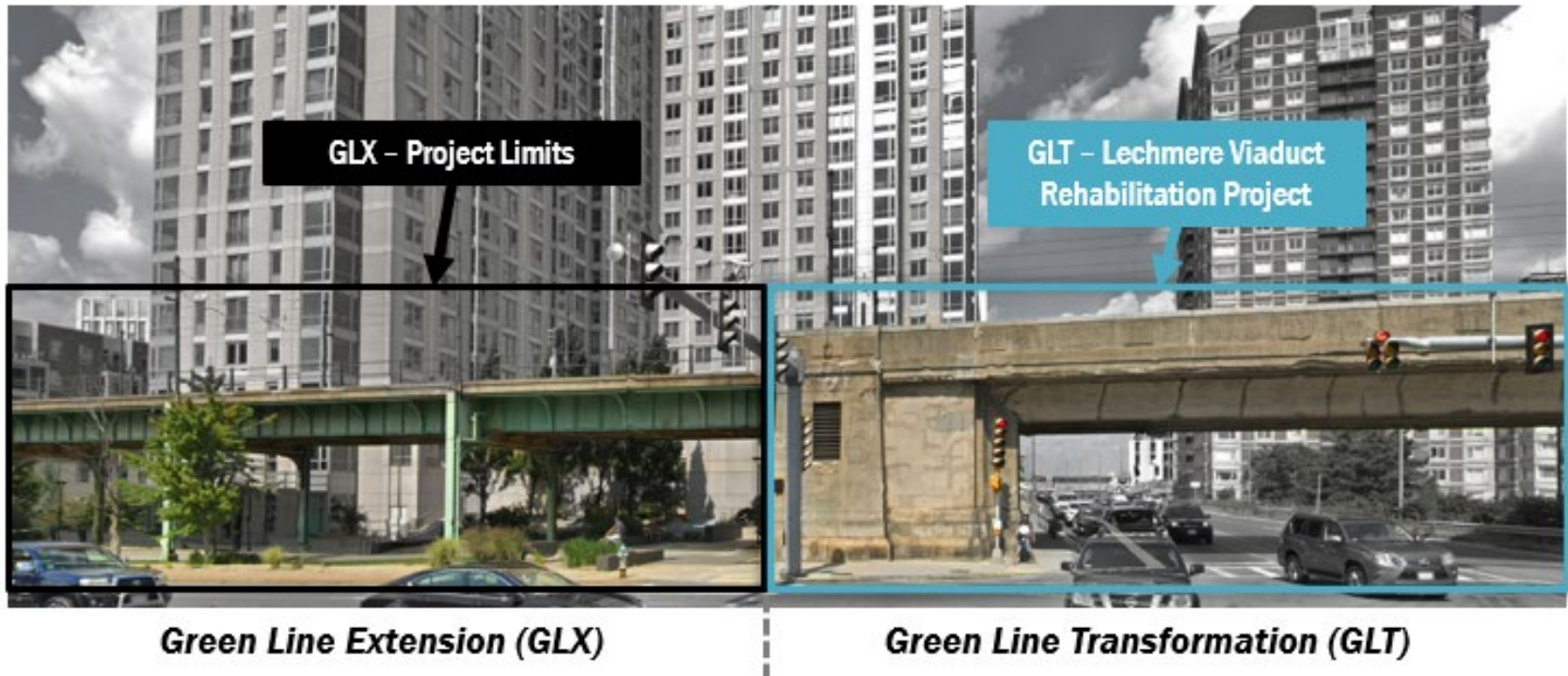


Recent GLX Milestones con't 3

Washington Street Bridge Reopening May 31, 2020



Lechmere Viaduct Rehabilitation



Lechmere Viaduct Rehabilitation con't



Green Line Transformation (GLT) concurrent project to leverage GLX closure



Current Conditions

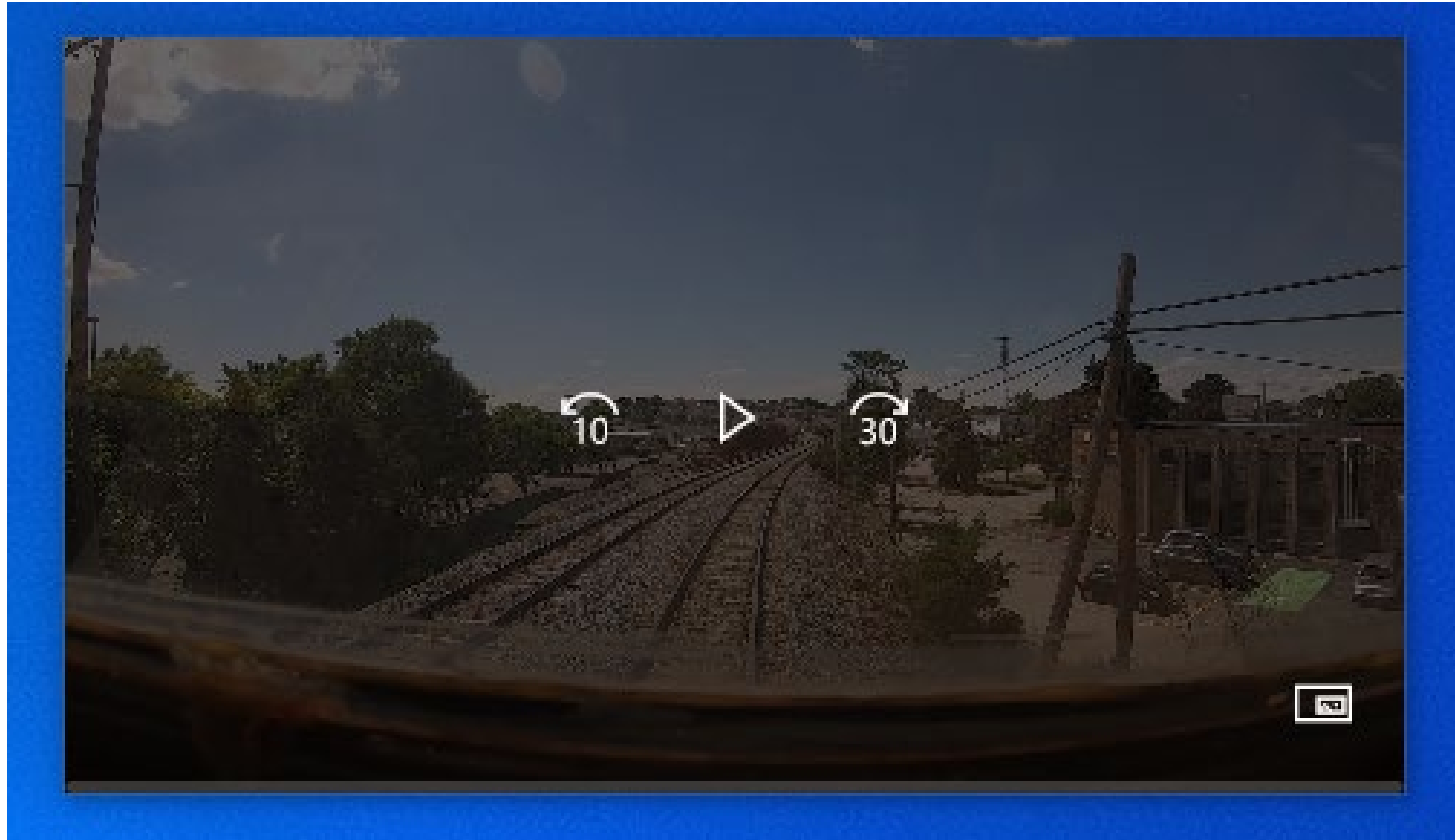
- Track and ties, deck, and stringer system need replacement
- Infrastructure reinforcement required for planned capacity increases
- Historic arched structure concrete showing extensive chloride intrusion and map cracking of the concrete

Rider Benefits

- Improve safety and reliability by reducing unplanned service disruptions due to aging infrastructure
- Increase capacity and improve frequency to accommodate more riders and new Green Line trains (Supercars)
- Preserve and restore historic concrete arched structure built in 1910, adding 75 years of service life



Video of the future Green Line





Construction Update

➤ Jeff Wagner, GLXC Public Outreach



Safety

Working Safely & Fighting COVID-19

- New Construction Rules & Training started in March
- Additional PPE, distancing requirements, handwashing stations, disinfectant kits for heavy equipment operators, vigorous medical screening & self reporting
- Highly visible COVID-19 safety communications in the field and offices
- 2 dedicated COVID-19 safety officers brought on board in April
- Field work progressed safely but there were some impacts



Overview

Current State of the Project

- Project 44 percent complete
- December 2021 completion
- 400 GLXC & subcontractor personnel on the job. Will increase to 500 personnel later this summer
- Following the commuter line track shift work has fully ramped up on west side of alignment including:
 - Drainage (roughly 30 percent of what was installed on east)
 - Wall construction
 - Station & Power Traction Substation construction
 - Track work
- Wall & other work continues on the east



Room to Work

Commuter Line Track Shift

- With all track shifts completed workers have more than double the space to operate



April 2018

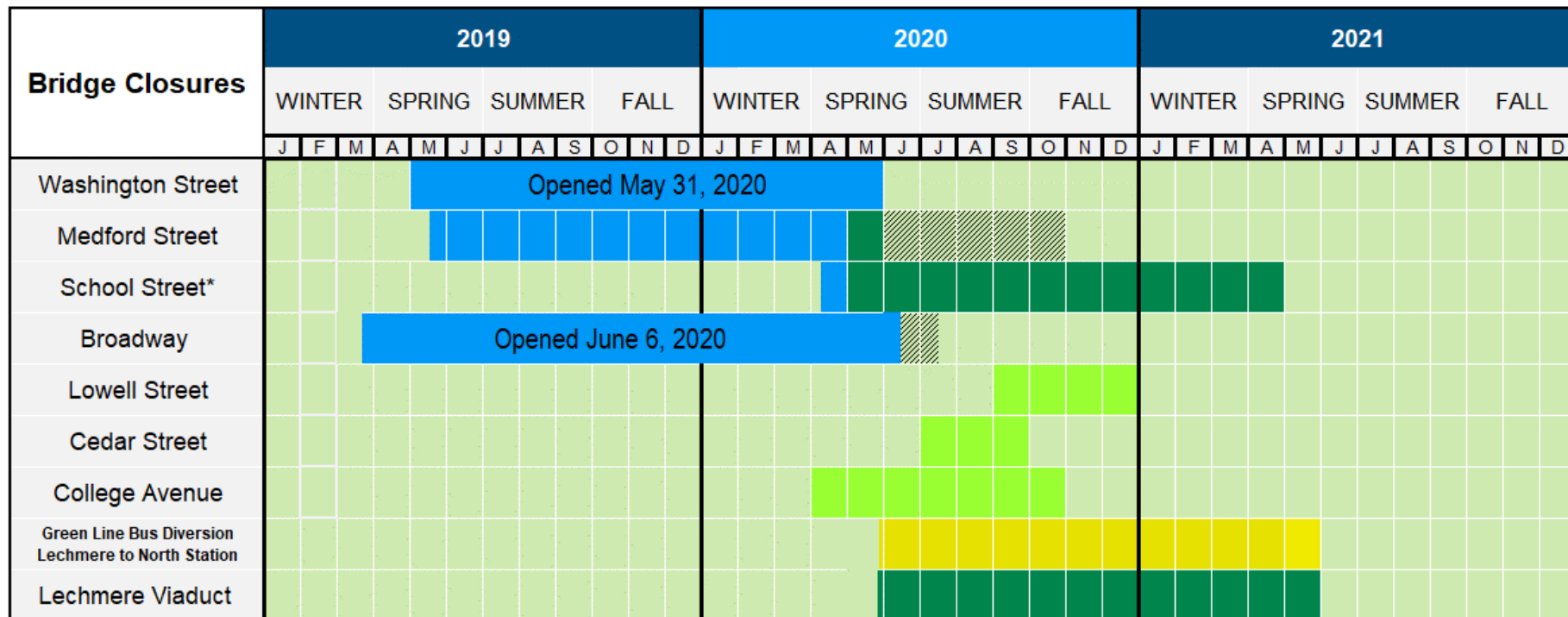


May 2020



June 2020

Bridge Construction Status



** Schedule subject to change pending COVID-19 impacts, weather, and other factors.



Closures to date

Closures remaining

Design Builder forecast



Generally open - traffic restrictions at times

Estimated Green Line Viaduct closure

June 15, 2020



massDOT
Massachusetts Department of Transportation



Bridge Construction Status con't

Washington St.



August 2018



May 31, 2020

Bridge Construction Status con't 2

Washington St.



August 2018



May 31, 2020

Bridge Construction Status con't 3

Broadway Bridge



March 23, 2019



May 21, 2020



massDOT
Massachusetts Department of Transportation



Bridge Construction Status con't 4

Broadway Bridge



July 2018



June 2020

Bridge Construction Status con't 5



Broadway



Washington St.



School St.



Medford St.

Bridge Construction Status con't 6



College Ave.



Cedar St.



Lowell St.



Station Construction Status

Station Platform Construction	2019				2020				2021			
	WINTER	SPRING	SUMMER	FALL	WINTER	SPRING	SUMMER	FALL	WINTER	SPRING	SUMMER	FALL
Lechmere												
Union Square												
E. Somerville												
Gilman Square												
Magoun Square												
Ball Square												
Medford / Tufts												

* Schedule is subject to change based on COVID-19 impacts, weather, and other factors.

Station platform under construction



Station Construction



Lechmere



Union Square



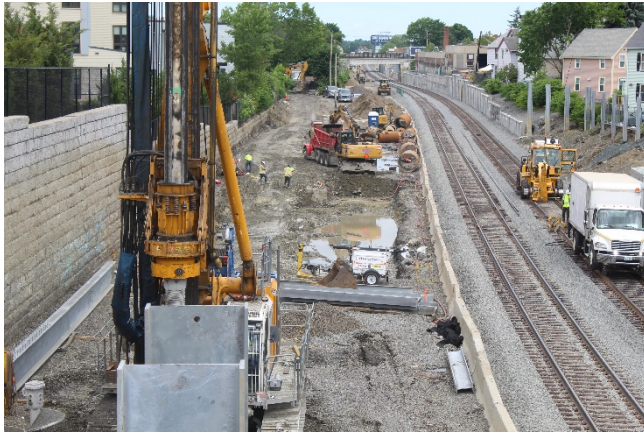
East Somerville



Gilman Square



Station Construction con't



Magoun Square



Ball Square



Medford/Tufts



Viaduct Construction

Lechmere Viaduct Demolition

- Trolley Service stopped at Lechmere and Science Park (May 23)
- Trolley Electrical and switching systems safely shutdown & removed
- Track & ballast removed from viaduct
- Protect new construction
- Concrete deck removal
- Steel superstructure removal



Viaduct Construction con't

Lechmere Viaduct Demolition



Viaduct Construction con't 2

New Viaduct Taking Shape

- Steel placement continues to progress toward Washington St.
- Deck construction well underway between Water St. & East St.
- Foundation work between East St. & Gilmore Bridge will transition to steel placement in coming months



Viaduct Construction con't 3

New Viaduct Taking Shape



Viaduct Construction con't 4

New Viaduct Over the Boston Engine Terminal Tracks

- In this section tracks split with lines heading to Union Square & Medford/Tufts
- Foundation construction for Community Path underway



Vehicle Maintenance Facility



Vehicle Maintenance Facility con't



Vehicle Maintenance Facility con't 2

Major Activities

- Vehicle Maintenance Facility framework in place
- Roof and walls on Transportation Building
- Drainage & Retaining wall construction nearly complete



Vehicle Maintenance Facility con't 3

Major Activities

- Catenary poles in place
- Track placement to start in August



Noise & Retaining Wall Construction

East Side of Alignment

- Retaining & noise wall panel placement is advancing



Wall MCE-1
Cross St – McGrath Hwy



Wall N-6
McGrath Hwy - Walnut



Wall N-7
School St. – Sycamore



Wall N-9
Central – Lowell St.

Noise & Retaining Wall Construction con't

East Side of Alignment



Wall ME-2
Lowell St – Cedar St



Wall ME-2.2/2.3
Cedar St – Broadway



Wall ME-2.4
Broadway - Harvard



Wall N-15/ME-3
College Ave - Winthrop

Noise & Retaining Wall Construction con't 2

West Side of Alignment

- Larger, steeper hillsides on west side of alignment
- Building up temporary soil walls to support foundation drilling
- Several sections of alignment have multiple levels with walls
- Steel H-Piles set in concrete will support wall panels
- Work to continue throughout 2020



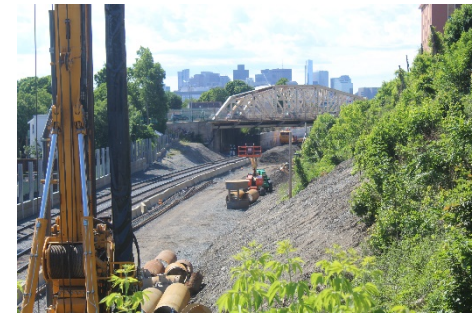
Wall N-3A
Brickbottom



Wall CA-1A
Washington – Cross St



Wall CA-1A/1B/2A/2B
Cross St – McGrath Hwy



Wall MW-36.2
McGrath Hwy - Walnut

Noise & Retaining Wall Construction con't 3

West Side of Alignment



Wall MW-36.3
Walnut – Medford St



Wall MW-36.4
Medford St – School St



Wall MW-5.5
Medford St – Sycamore



Wall MCW-3
Sycamore - Central

Noise & Retaining Wall Construction con't 4

West Side of Alignment



Wall MW-7.5
Central – Lowell



Magoun Plaza Entry
Lowell – Cedar St



Wall MW-8
Cedar St – Broadway



Wall MW-10B
College Ave - Winthrop

Community Connection Team

Keeping us on track we thank you

Green Line
Extension Constructors

GLX
CONSTRUCTORS

with support from key members
of the construction team:

SA SIEFERT ASSOCIATES
Construction Engineering

ATLANTIC
COAST DISMANTLING

Broco OIL

United Rentals

The LiRo Group

COLONY

GZA

KELLER

AGGREGATE INDUSTRIES

CONSIGLI
Est. 1973

ALGAR
CONSTRUCTION

Greater Somerville Homeless Coalition
Support. Housing. Community.

www.shcinc.org
1 Davis Square, Somerville,
MA 02144 (t): 617 623 6111

finding everyone a home





Q & A

1. Type a Question into the Webinar Question Box
2. Voice Mail 857-267-6125
3. Email info@glxinfo.com

