



COOL CORRIDORS GRANT PROGRAM

Division of
Conservation Services,
Executive Office of
Energy &
Environmental Affairs



**COOL CORRIDORS IS A
NEW GRANT PROGRAM
INITIATED BY THE DIVISION
OF CONSERVATION
SERVICES, WITHIN THE
EXECUTIVE OFFICE OF
ENERGY &
ENVIRONMENTAL
SERVICES.**

Cool Corridors Grant Program Priorities

- Targeted tree planting projects
- Extreme Heat Mitigation, specifically within walking routes of vulnerable populations
- Siting trees= Right Tree, Right Place
- Increase tree canopy, focusing on planting shade trees when appropriate
- Proper tree care and maintenance—this is imperative!
- Impervious surface removal, to accelerate tree planting
- Implementation of cooling services, including painting dark surfaces light colors.
- Increase biodiversity in the urban forest
- Creation of wildlife habitat



Funding Availability

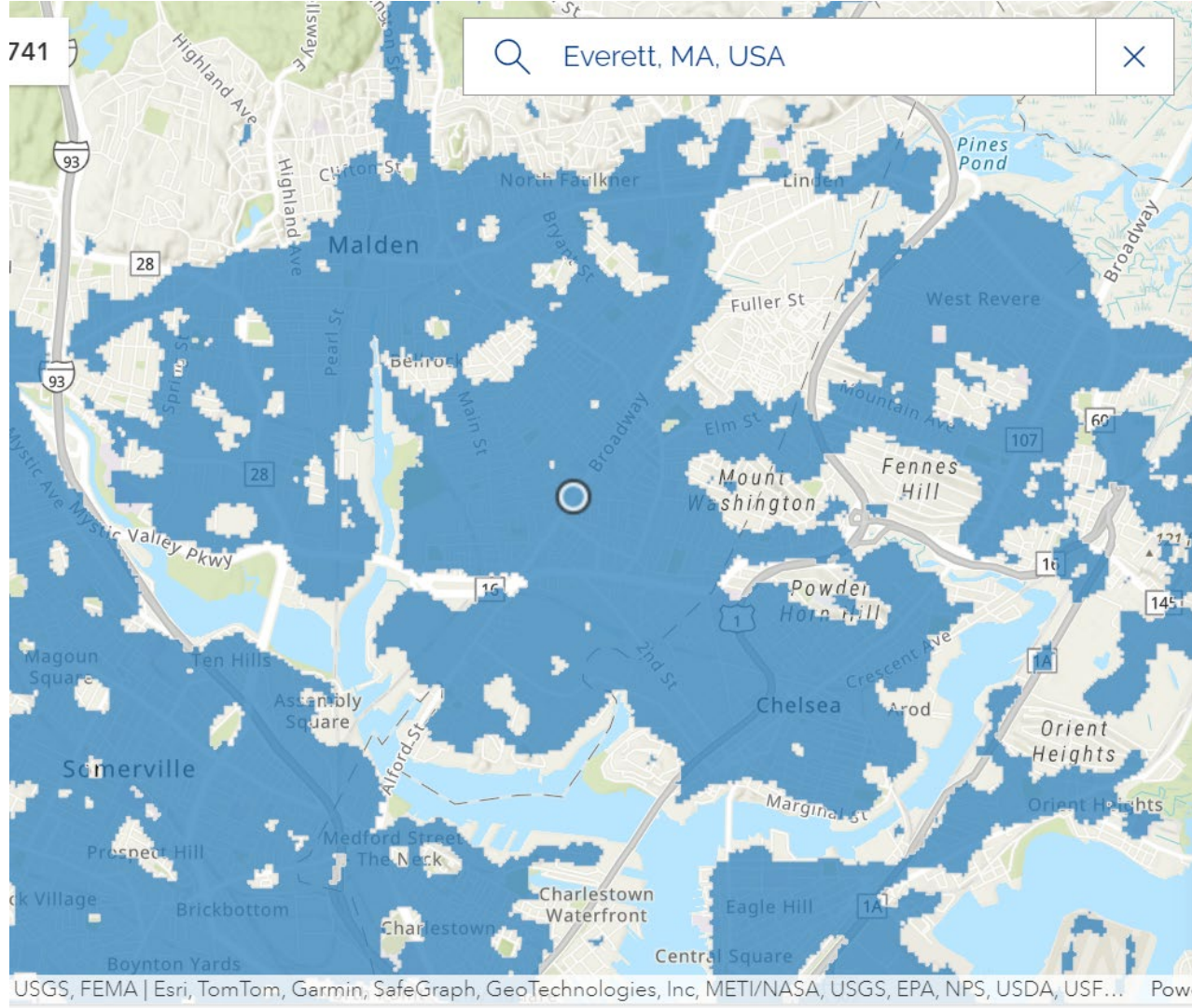
- Maximum grant award is \$150,000, to be spent over 2 fiscal years.
- A portion of the grant funds must be spent on tree watering and maintenance, over 2 years after planting.
- Reimbursement grant program; applicant must be prepared to incur costs up front.
- Costs incurred prior to award contract are not eligible for reimbursement

Eligible Applicants

- Municipalities and non-profit 501 (c)(3) organizations, state housing authorities, and/or public & private schools and universities are eligible to apply to this grant program.
- Applicants are encouraged to explore partnership opportunities where it will achieve greater impact.
- Applicants should have a clear tree planting and maintenance plan when submitting an application.

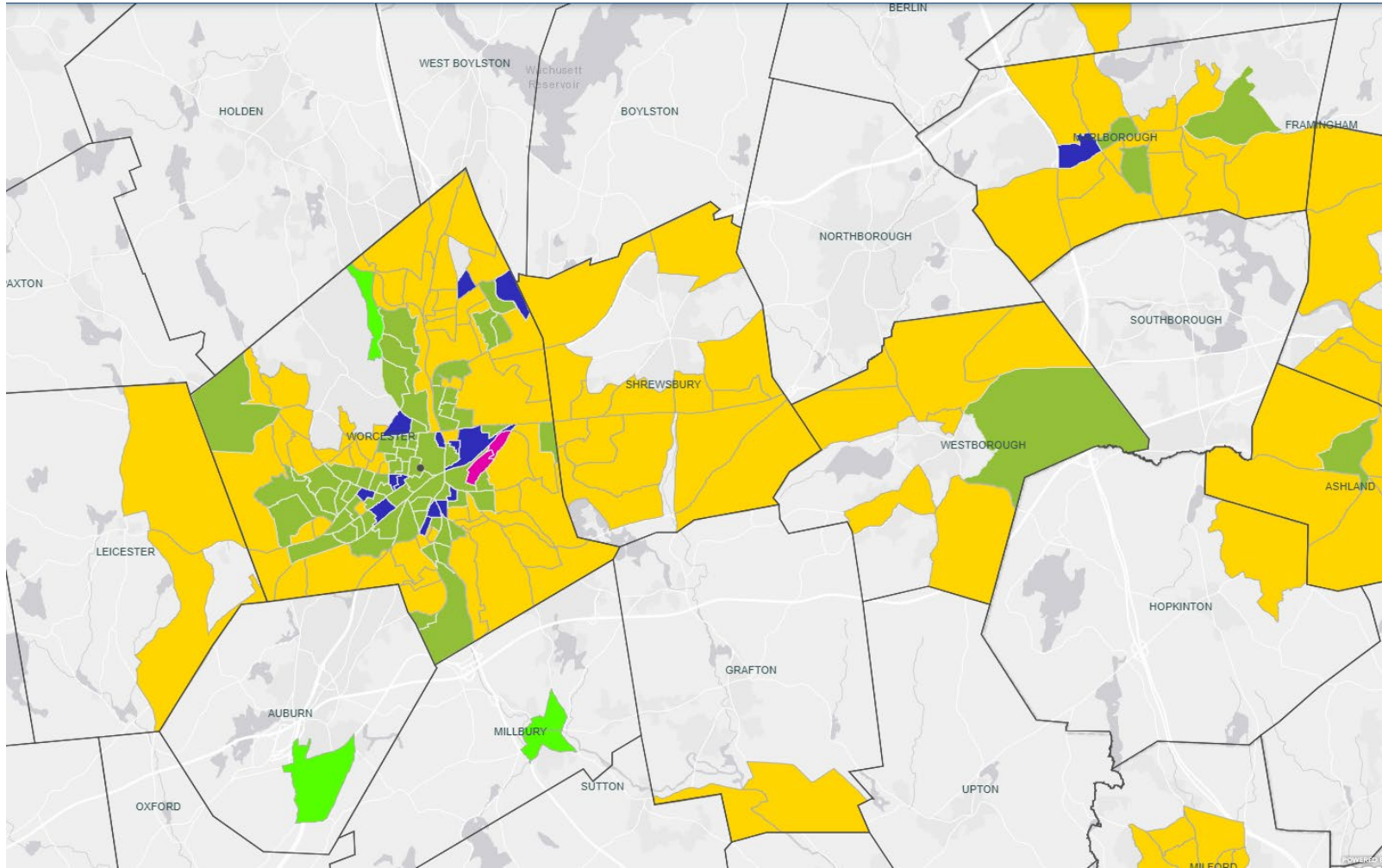
Project Ideas

- ❖ Community tree planting projects, specifically targeting neighborhoods with documented urban heat islands, hotspots and/or areas that suffer from surges of extreme heat.
- ❖ Planning, design and implementation of microforests.
- ❖ Implementation of tree planting projects to create 'cool corridors' where underserved and vulnerable populations reside and travel. Specifically, along walking routes to schools, senior centers, health centers, transit stops and other community gathering areas.
- ❖ Implementation of cooling services, in tandem with tree planting. Cooling services can include painting of dark surfaces with a light color and/or installation of light permeable surfaces to reduce heat-energy absorption.



IDENTIFYING
'HOTSPOTS'
WITHIN
COMMUNITIES
TO FOCUS TREE
PLANTING
EFFORTS FOR
COOL
CORRIDORS
PROJECTS

HOT SPOTS | HOT
SPOTS |
RESILIENTMASS
CLIMATE HUB
(ARCGIS.COM)



Identifying
Environmental
Justice
neighborhoods to
focus tree planting
efforts for Cool
Corridors Project

[Massachusetts
2020 Environmental
Justice Populations
\(arcgis.com\)](https://arcgis.com)

Eligible Project Costs

- Purchase of trees and associated materials, including clean loam and/or mulch, watering bags, stakes
- Costs for watering trees throughout the contract period, including purchase of equipment (water tank, hoses, tree watering bags) needed to water trees. **All trees planted utilizing EEA grant funding must be watered for a minimum of two consecutive years after planting.** All trees must be watered once a week and be given a minimum of 20 gallons per tree
- Tree pit creation, excavation, extension or restoration to facilitate tree planting. Remediation or replacement of soil to increase tree health.
- Cost associated with the planning, design and planting of micro forests within identified urban heat islands or 'hotspots.'
- Concrete, asphalt, or other impervious material removal associated with urban heat mitigation and heat sink reduction, in correlation with proposed tree planting projects.
- Implementation of cooling services, including painting of dark surfaces with a light color and/or installation of light permeable surfaces to reduce heat-energy absorption, associated with a tree planting project.
- Purchase & installation of green infrastructure that accompanies tree planting. Projects must include green infrastructure that allows for larger soil volume, remediates soil compaction and/or facilitates water permeability. Structural soils, silva cell structures, flex pavement, and permeable pavement are all potentially eligible for funding.

Grant Requirements

- ❖ Plantings must follow “**right tree, right place**” principles
 - Tree species (or cultivars) prohibited for purchase in MA are not eligible
 - Restrictions on host species of Emerald Ash Borer, Beech Leaf Disease and Asian Long-Horned beetle
 - Emphasize planting of large shade trees, to increase urban tree canopy
 - Plantings in proximity to utility wires must reflect low-growing species
- ❖ Grantees may elect to plant trees using their staff, or subcontract tree planting work. Applicants or subcontractors planting trees must have an MCA or ISA certified arborist present on site to manage day-to-day tree plantings.
- ❖ Please see **Attachment C in Bid Document** for additional contractual specifications for tree planting & care

PLEASE READ BID DOCUMENT CAREFULLY AND FOLLOW APPLICATION INSTRUCTIONS

Application Requirements

- Application form
- Project description (see application form for details)
 - Goals, project deliverables & timeline
 - Watering plan and tree stewardship intentions in the first 2 years
- Planting plan/Impervious surface removal plan (see application form for details)
 - Identify planting locations and species to be planted. All trees must be >1.5" dbh and/or identify locations where impervious surfaces will be removed to facilitate tree planting.
 - Plan should be reviewed with municipal Planning Department
- Project Budget
 - Total estimated costs, itemized where possible
 - Project costs contributed in-kind or other funding matches

Additional Required Documents

- Letter (s) of endorsement from Municipality and/or other partners (if proposal includes plantings on partner held property).
- Letter of support from Tree Warden or appropriate commission (if planting is proposed on municipal land).
- Documentation that planting plan has been reviewed by planning board (if planting is proposed on municipal land)
- Letters of endorsement from any partners if tree planting is proposed on lands that are not owned by applicant

Non-profit applicants:

Letter of endorsement from the municipality
Articles of Incorporation and IRS 501(c)(3) letter

Application Evaluation

Overall project quality = 80 points

Applicant capacity = 20 points

Environmental Justice = 25 points

Total Potential Score = 125 points

See Grant Document for full scoring criteria.



Grant Timeline

- **APPLICATION DEADLINE: Friday, August 2nd at 4:00pm**
- *Submit PDF application via email – do not exceed 20 MB*
- **August/September:** EEA conducts application review.
- **October/November:** Awards announced, contracting will commence after award announcement.
- **Spring 2025 through Fall 2026:** Projects executed
- Tree Watering to occur **Spring 2025-Fall 2026**
- Contract end date: **June 30th, 2026**
- ❖ EEA Tree Planting Manager will meet with project manager to inspect trees and confirm plantings are acceptable.
- **Tuesday July 14th, 2026:** Deadline for grant reimbursement requests and final project report. **Please note– all work invoices submitted for reimbursement should reflect the end of the fiscal year deadline, June 30th, 2026.**

A grayscale photograph of a park. In the foreground, several young trees are planted in wire cages. The ground is grassy. In the background, there are more trees and a building. The sky is cloudy. The image is overlaid with a green gradient at the top and bottom.

Questions?

Contact Information:

Hilary Dimino

857-207-1912

Hilary.M.Dimino@mass.gov