



*Green Communities  
Webinar*

*October 20, 2015*

**COMMONWEALTH OF MASSACHUSETTS**

*Charles Baker, Governor  
Matthew Beaton, Secretary  
Judith Judson, Commissioner*

***Green Communities Annual  
Reporting***

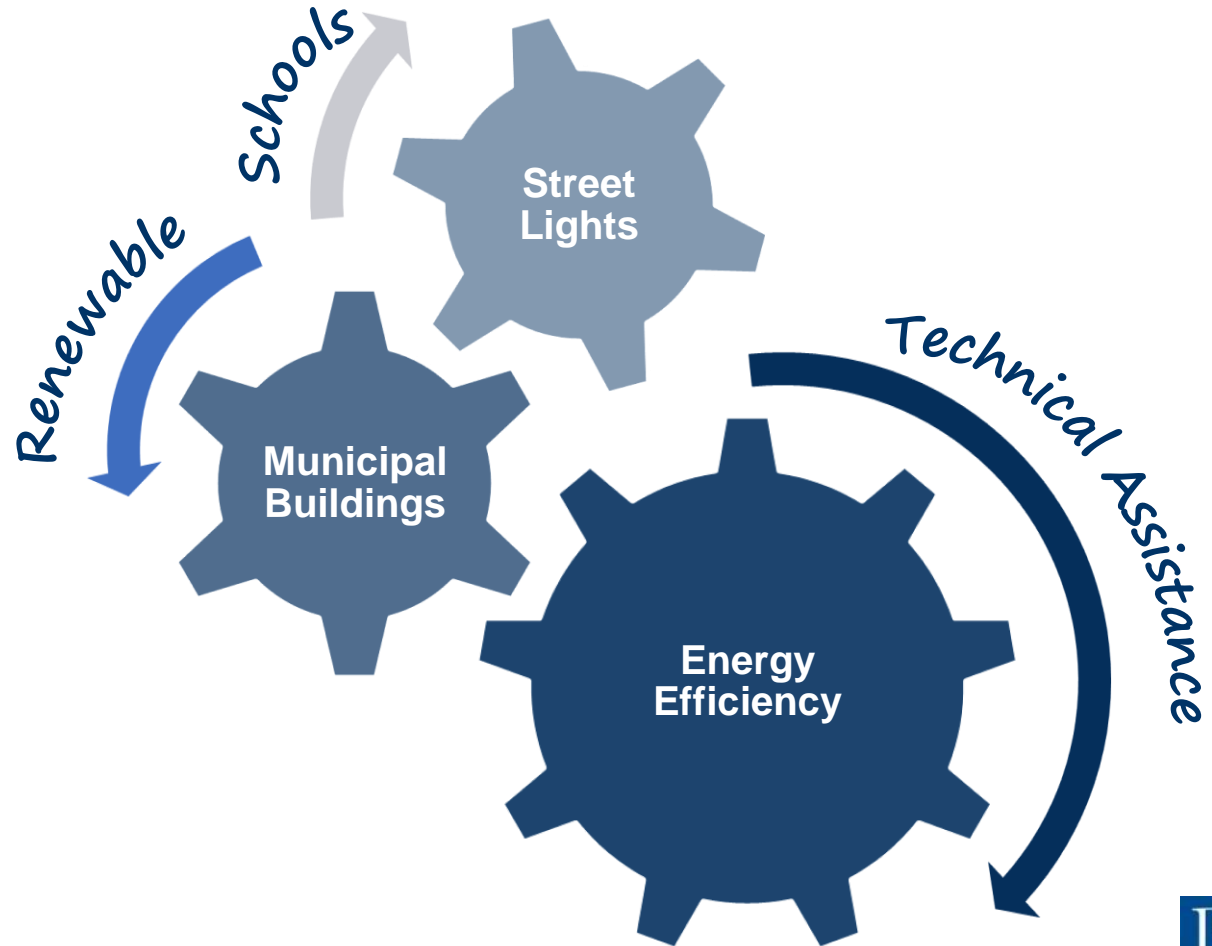
*Kelly Brown, Central Regional  
Coordinator*

*Seth Pickering, Southeast Regional  
Coordinator*

*Aimee Powelka, Municipal Efficiency  
Coordinator*

# Green Communities Division

The energy hub for ***all*** Massachusetts cities and towns, not just designated “Green Communities.”



*Helping Massachusetts Municipalities Create A Cleaner Energy Future*



# Outreach - Regional Coordinators

- Regional Coordinators act as direct liaisons with cities and towns on energy efficiency and renewable energy activities
- Located at each of the DEP Regional Offices:



WERO – SPRINGFIELD: Jim Barry  
[Jim.Barry@state.ma.us](mailto:Jim.Barry@state.ma.us)



NERO – WILMINGTON: Joanne Bissetta  
[Joanne.Bissetta@state.ma.us](mailto:Joanne.Bissetta@state.ma.us)



CERO – WORCESTER: Kelly Brown  
[Kelly.Brown@state.ma.us](mailto:Kelly.Brown@state.ma.us)



SERO – LAKEVILLE: Seth Pickering  
[Seth.Pickering@state.ma.us](mailto:Seth.Pickering@state.ma.us)



*Helping Massachusetts Municipalities Create A Cleaner Energy Future*



# Green Communities Division - Programs & Resources for Municipalities

- Green Communities Designation and Grant Program
- MassEnergyInsight energy tracking and analysis tool
- Municipal Energy Efficiency Assistance
- Energy Management Services Technical Assistance
- Mass Municipal Energy Group (MMEG)
- Website filled with tools & resources:  
[www.mass.gov/energy/greencommunities](http://www.mass.gov/energy/greencommunities)

**Email updates via e-blasts – Sign up by sending an email to:**  
[join-ene-greencommunities@listserv.state.ma.us](mailto:join-ene-greencommunities@listserv.state.ma.us)



*Helping Massachusetts Municipalities Create A Cleaner Energy Future*



# Designation & Grant Program

## Qualification Criteria: Designation

1. Adopt as-of-right siting for RE/AE generation, R&D, or manufacturing
2. Adopt expedited permitting process
3. Create an Energy Reduction Plan to reduce energy use by 20% in 5 years
4. Purchase only fuel-efficient vehicles
5. Minimize life cycle cost in new construction → adopt the Stretch Code

## Grant Funding

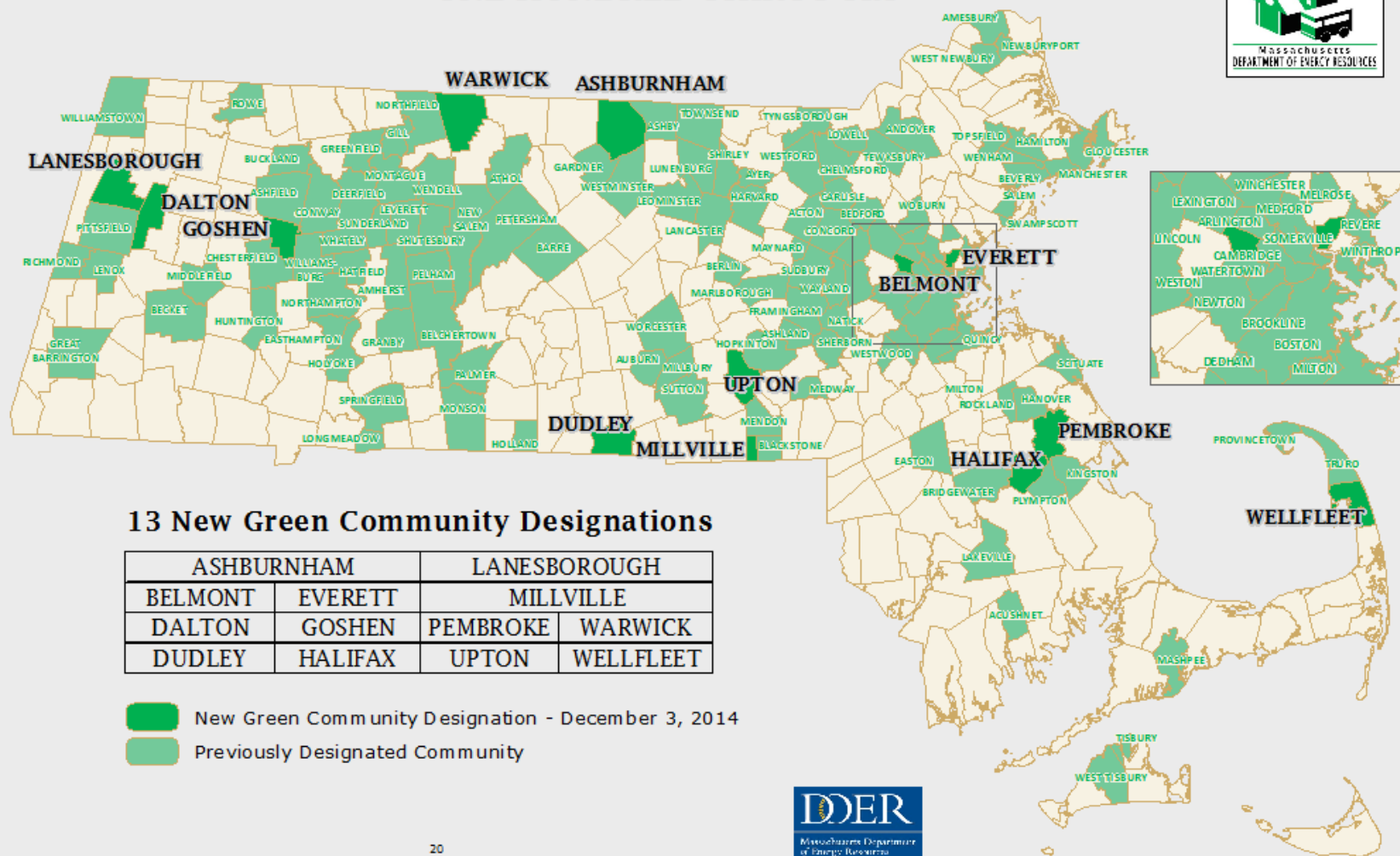
1. Energy Efficiency Projects
2. Renewable Energy Projects on municipal land



*Helping Massachusetts Municipalities Create A Cleaner Energy Future*



# GREEN COMMUNITY DESIGNATIONS REACH ONE HUNDRED THIRTY-SIX



## 13 New Green Community Designations

ASHBURNHAM		LANESBOROUGH	
BELMONT	EVERETT	MILLVILLE	
DALTON	GOSHEN	PEMBROKE	WARWICK
DUDLEY	HALIFAX	UPTON	WELLFLEET

- New Green Community Designation - December 3, 2014
- Previously Designated Community

20  
Miles



JP#1812, 12-3-14



*Helping Massachusetts Municipalities Create A Cleaner Energy Future*



# USING ANNUAL REPORT DATA

**Compliance** - with 5 designation criteria

**Inspiring Others** – we provide data from the annual reports to be used in talks given by the Governor, Secretary and Commissioner at local, regional, national and international meetings to inspire other organizations assisting municipalities

## Green Communities Are Making A Difference

- **Progress Report** – on all 5 criteria - coming soon
- **GHG Reductions** – included in assessing MA progress towards climate goals mandated by the Global Warming Solutions Act



*Helping Massachusetts Municipalities Create A Cleaner Energy Future*



# Green Communities Annual Report Submission

1. Email your RC – pre-registration is required!
2. **Annual Report Deadline = 12/4/15**
3. You must submit your Annual Report as an **Excel** file
4. PDF the General Instructions worksheet after having it signed and submit it with the AR Excel file.
5. [https://massdoer.centraldesktop.com/gcannualreport submit/](https://massdoer.centraldesktop.com/gcannualreportsubmit/)



*Helping Massachusetts Municipalities Create A Cleaner Energy Future*





# Green Communities Division

## Annual Report Basics

1. **Annual Report Deadline = 12/4/15**
2. Municipalities that do not submit an AR will not be eligible for next GC funding \$\$\$ opportunity
3. Please read the General Instructions worksheet in the Annual Report Excel file

9) Fields highlighted in yellow should be completed by Green Communities.

10) Fields highlighted in green have been pre-populated by the Regional Coordinators – **Check me!**



*Helping Massachusetts Municipalities Create A Cleaner Energy Future*



# INSTRUCTIONS

<b>Date Designated:</b>	<b>Dec-13</b>	<b>PLEASE NOTE:</b> For a municipality designated December 2013, the reporting period is 18 months, Jan 1 2014 - June 30 2015
<b>Date of Annual Report Submission</b>		
<b>Name of Preparer of Annual Report</b>		
<b>Title</b>		
<b>Municipality Name</b>		

I confirm that I have reviewed this report and verify all information is true.

<b>Signature of Chief Executive Officer</b>		The Chief Executive Officer is defined as the manager in any city having a manager and in any town having a city form of government, the mayor in any other city, and the board of selectmen in any other town unless some other officer or body is designated to perform the functions of a chief executive officer under the provisions of a local charter or laws having the force of a charter. Any signatures of designees will be considered an attestation that the signatory has been designated the designee by the municipality.
---	--	--

---



# POLL QUESTION #1

Have you completed a Green Communities Annual Report before?

- a) Yes, by myself
- b) Yes, as part of a team
- c) No
- d) I can't remember



*Helping Massachusetts Municipalities Create A Cleaner Energy Future*



# Criteria 1 & 2 – RE/AE Zoning & Permitting



# Criteria 1 & 2

## Worksheet

1. Check green cells for accuracy
2. Click on the yellow cells for Questions 1-3 and choose from the drop down box
3. Type any narrative into the yellow cell under Question 3
4. Click on the yellow Permitting cell and answer the question using the drop down box
5. To see a sample of the Criteria 1 & 2, Table 1, click on the link in the Table 1 header



# CRITERIA 1 and 2

## Criteria 1 and 2

Type of as-of-right siting approval received:

Type of expedited permitting approval received:

### **REGULATIONS (zoning & permitting):**

1) Have any significant changes been made to the zoning district(s) for which the community received Green Communities designation? Significant changes, such as changes to the geographic extent of the district, allowed uses, and dimensional requirements, would impact the ability to construct a qualifying clean energy use in the district. Overlay districts, such as water protection districts that impose special permitting requirements, count as significant changes.

If yes, attach a letter from municipal counsel that describes the changes, outlines any potential impact on the siting of clean energy projects, and affirms continued compliance with the Green Communities As-of-Right Zoning and Expedited Permitting criteria, as well as a revised zoning map.

Please select YES or NO in the dropdown on the right. If YES, attach letter from municipal counsel.

<Select YES or NO>



# CRITERIA 1 and 2

2) Have any significant changes been made to site plan, design, or other development review criteria or any permit review procedures that would impact the ability to permit qualifying clean energy uses as-of-right and in a timely manner? Significant changes would be anything that pertains to the “by-right” nature of the zoning or to the amount of time necessary to review required permits.

If yes, attach a letter from municipal counsel that describes the changes, illustrates any potential impact on the siting of clean energy projects, and affirms continued compliance with the Green Communities As-of-Right Zoning and Expedited Permitting criteria.

Please select YES or NO in the dropdown on the right. If YES, attach letter from municipal counsel.

<Select YES or  
NO>

3) Has the space designated for “as-of right” development for which the community received Green Communities designation been reduced?

Please select YES or NO in the dropdown on the right. If YES, explain what has happened since the community applied for, and received, Green Communities designation and describe any plans the community may have to make such development feasible again

<Select YES or  
NO>

**NARRATIVE:**



# CRITERIA 1 and 2

## PERMITTING:

Have any clean energy projects applied for approval **under the zoning for which the community received Green Community Designation?**

<Select YES or NO>

Please select YES or NO in the dropdown on the right. If YES, fill out Table 1 below:

**Table 1: SAMPLE Expedited Permitting Projects**

PROJECT NAME	Type (Generation (Capacity), R&D, and/or Manufacturing)	As-of-right designated location	Applicant	Project Description	Permit(s) (use as many rows as required)	Status	Date Submitted	Decision Date	Other Pertinent Information
Hilltop Wind	Renewable Energy (wind) 9 MW	landfill	Peak Performance , LLC.	Six 1.5 MW wind turbines on 16 acres of land	Site Plan Review	Approved	11/1/2010	1/21/2011	Modest design changes to conform to as-of-right bylaw
					Wetlands (access road is in buffer zone)	Approved	10/16/2010	12/2/2010	

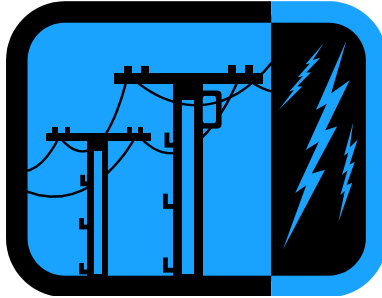


*Helping Massachusetts Municipalities Create A Cleaner Energy Future*





# CRITERION 3 – Reducing Energy Usage



*Helping Massachusetts Municipalities Create A Cleaner Energy Future*



# CRITERION 3 CHECKLIST

1. Narrative
2. Building stock changes
3. MassEnergyInsight
  - a. Load data
  - b. Verify data
4. Table 3 – energy use
5. Table 2 – overview and weather normalization
6. Table 4 – energy conservation measures
7. Table 5 – renewable energy projects



# CRITERION 3

## 6. Provide a Narrative

Provide a brief narrative explaining changes seen and what is anticipated for the next year. Any notes on successes or challenges are welcome.

*Sample Narrative: Our buildings have a 12 percent decrease in energy use and the vehicles have a 4 percent reduction. We have implemented projects in the Town Hall and would have expected larger savings. We are investigating this. We are also intending to implement a large retrofit at the drinking water treatment plant this year that should yield a significant level of savings.*

**NARRATIVE:**

## 7. Building Stock Changes

Please describe any building stock changes that have occurred since your GC baseline year. Include the year any whether any changes are a replacement, addition, removal or renovation. Include any changes in square footage for additions. Link to Appendix A in the ERP Guidance.



*Helping Massachusetts Municipalities Create A Cleaner Energy Future*



# CRITERION 3 – Table 3

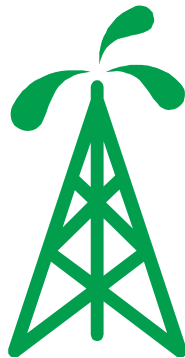
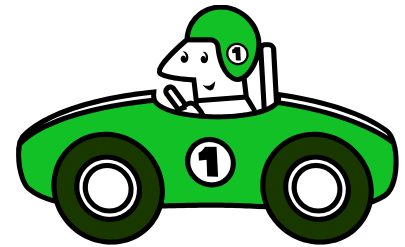
## Using MassEnergyInsight

Energy Reduction Plan Guidance Table 3a (Native Fuel Units)

Energy Reduction Plan Guidance Table 3b (MMBtu)

### REQUIRED

- Provide raw (non-normalized) energy usage data
- Load gasoline, diesel, oil, propane
- Load RE production that is *behind-the-meter* – ask if  $\leq 10$  kW
- RE production that is net-metered *should* have been provided by utility



*Helping Massachusetts Municipalities Create A Cleaner Energy Future*



# POLL QUESTION #2

Do you know how to load energy use data to MassEnergyInsight?

- a) Yes, no worries
- b) Probably, but I need to watch those videos to remember more
- c) No, I need help
- d) What kinds of data again?



*Helping Massachusetts Municipalities Create A Cleaner Energy Future*



# Loading Data into MEI

Hello aimee.powelka@state.ma.us | Home | Support | (

view reportsorganize dataupload a spreadsheet

2

## What do you want to do?



### View your dashboards / reports:

View your dashboards and reports, export images and PDFs from dashboards and reports, and download your data (including crosstabs and row-level data).



### Organize your data:

Set up or reorganize your departments, facilities, and accounts, and enter energy use information for one account at a time.



### Update your data by spreadsheet:

Upload large amounts of energy use or competitive supply data by spreadsheet.

## Getting Started



### Getting Started Video 15:48

**Reports Matrix:** Quickly figure out which report to use, based on what you need to know.

## What's New

**New!** MassEnergyInsight has a user guide! [Download it here!](#)

1

# Support for Loading Data into MEI

Learn how to do what you need to do. Each of the brief videos below explores a specific task in the system.

Watch them once or over and over.

## Updating & organizing your data

[Organize Your Energy Data](#) - *HINT: Start here*

4:32

[Add a New Energy Account](#)

5:14

[Add a New Item to Your Tree](#)

4:22

[Add Energy Use Data Manually](#)

3:19

[Change the Name of a Tree Item](#)

1:43

[Delete Items from the Tree](#)

3:06

[Edit Energy Account Info and Use Data](#)

4:39

[Making an Account Inactive](#)

3:02

[Reassign or Move an Account in the Tree](#)

2:52

[Remove an Account From Your Tree by Rejecting It](#)

2:00

[Streetlights and Vehicles](#)

4:46

[Uploading a Spreadsheet](#)

4:34

1

2



*Helping Massachusetts Municipalities Create A Cleaner Energy Future*



# CRITERION 3 – Table 3a

ERP Guidance Table 3a - Municipal Energy Consumption for Baseline Year FY 2010 (Native Fuel Units)

Mass Energy Insight  
POWERING EFFICIENCY

view reports organize data upload a spreadsheet

Original View ▾

Baseline Overall Use, Emissions and Cost Dashboard

Baseline - Weather Normalized

Use and Cost Table

Annual Usage Patterns - Town

Usage Trends - Town

Use and Cost This Year to Last

Buildings to Target

Building Benchmarks

Building Dashboard

School Benchmarks

School Benchmarks - All

Monitoring Use Dashboard

Monitoring Cost Dashboard

Setup Completeness Dashboard

Data Loaded - Overview

Data Loaded - Detail

ESCO Report - Annual Data

ESCO Report - Monthly Data

ESCO Report - Building Level Usage (MMBTU)

Energy Reduction Plan Guidance Table 3 (Fuel Units)

Energy Reduction Plan Guidance Table 3 (MMBTU)

				Electric	Oil	Propane
Null, Null	Fire House			67682285		5,003
	Transfer Station			74845442	7,335	
				92993977	3,018	
<b>Null, Total</b>				<b>10,353</b>		<b>5,003</b>
Building, Administration	Town Clerk's Office			17058407		498
	Office			48388286	4,017	
	Town Hall			46571068	28,946	
				61354020		6,006
				15822192		1,753
				24019251	26,117	
Building, Library	Sample Library			15344730	44,223	
				23790017		3,080
Building, Public Safety	Kennel			34449617		1,161
				32863025	36,186	
	Old Engine			86018066	611	
				90205850		433
	Police Station			93870138	144,909	
				1823803701	61,663	
				1957770688		5,863
Building, Public Works	Salt Barn			18949322		116
				1071150	1,106	
Building, School	East School			1276472		9,152
	Evergreen School			1034579667		19,502

Use (MMBTU)

GREY

DEPA

Ad  
Fuel  
Fac  
Fac  
Fac  
Fac  
City  
Unit  
Mon

Overnight



# CRITERION 3

## Criterion 3 Instructions: Complete Steps 1-7

1. Read and complete all questions below.

### 2. Complete Table 2: Progress

Please complete Table 2 below. ALL categories are required, with the exception of open space.

**Fuel use from all vehicles, including those characterized as exempt AND non-exempt under Criterion 4, must be included.**

**Renewable Energy is a fuel source and the amount of renewable energy consumed by the Green Community must be included.**

**For MassEnergyInsight Users:** the easiest way to populate this table is to look at the ERP Guidance Table 3b (MMBTU) for each year. Enter the category totals and the grand total. Any null energy use should be assigned to the proper category or at least be consistent across the years. Please note if baseline numbers have changed due to any adjustments made in MEI, and, if so, what those adjustments were. **Please verify that Table 2 matches the information in Table 3 (or MassEnergyInsight if using it to report).**

To include a percentage of the energy use of a Regional School district, please include 3 versions of Table 2: one for the combined and final totals, one for the municipality alone, and one for the RSD (in its entirety, noting the applicable percentage).

### 3. Complete Table 3: Energy Use

REMEMBER to load all diesel, gasoline, heating oil and propane energy usage, as well as renewable energy usage that is NOT net-metered, into MEI prior to providing a date that your data is complete. Also, confirm that Table 3 in MEI matches the data provided in Table 2.

If your community uses MassEnergyInsight (MEI) to provide data for Table 3, provide the date the information in MassEnergyInsight was last verified. By including a date below, you are **confirming that the information in MEI is accurate and complete (including all fuels and renewable energy)** and that you wish to report your Green Community annual energy usage directly through MEI. If your community does not use MEI, please complete "Crit 3 - Tbl 3 - Non-MEI User Only."

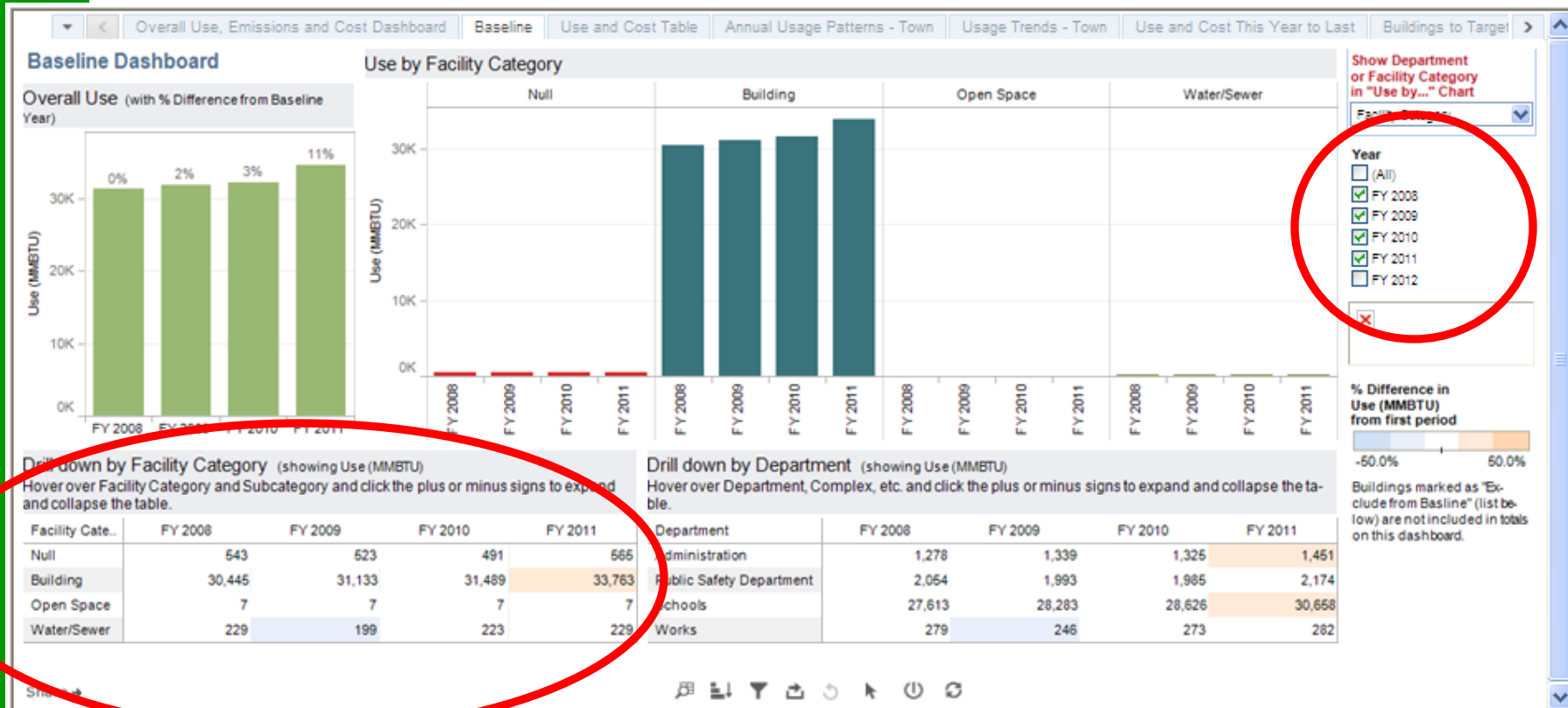
DATE:

# CRITERION 3 – Table 2

Table 2: Timeline of Annual Municipal Energy Use							
	Baseline MMBtu	Year 1 MMBtu	Year 2 MMBtu	Year 3 MMBtu	Year 4 MMBtu	Year 5 MMBtu	For Most Recent Year: Change vs. Baseline (%)
Note Fiscal or Calendar Year							
Buildings							#DIV/0!
Water/Sewer & Pumping							#DIV/0!
Open Space (optional)							#DIV/0!
Vehicles							#DIV/0!
Street and Traffic Lights							#DIV/0!
TOTAL ENERGY CONSUMPTION (NO Weather Normalization)	0	0	0	0	0	0	#DIV/0!
TOTAL ENERGY CONSUMPTION (Weather-Normalized)							#DIV/0!



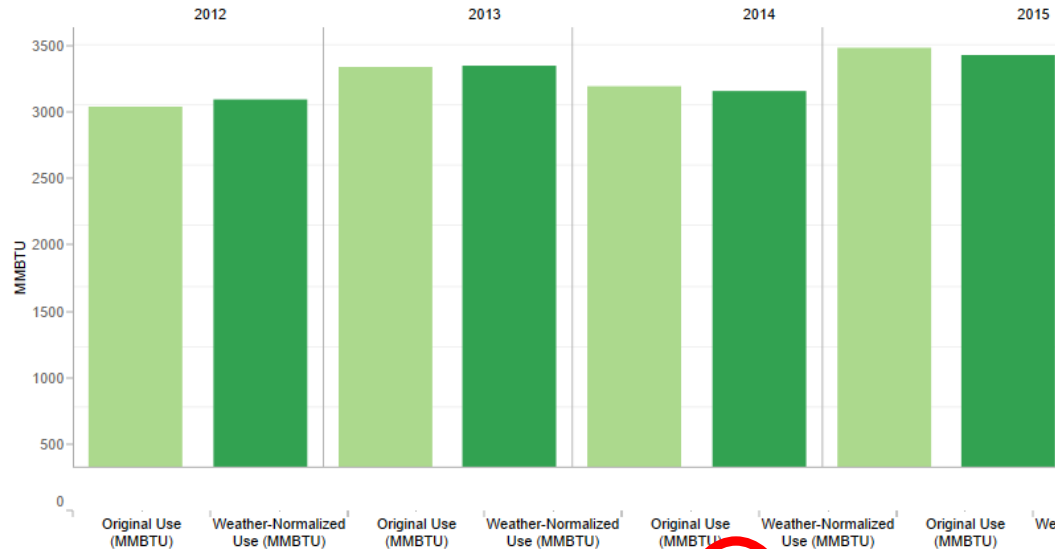
# CRITERION 3 – Using MEI Baseline for Table 2



Enter into Annual Report Table 2, lines 8-12

# CRITERION 3 – Table 2 – Using MassEnergyInsight for Weather Normalized Energy Use Data

Baseline - Weather Normalized



		Electric		Gas	Grand Total			Heating Degree Days	Cooling Degree Days
2012	Weather-Normalized Use (MMBTU)	2,681	362		3,043	2012		5,190	725
	Original Use (MMBTU)	2,681	305		2,986	2013		6,055	720
2013	Weather-Normalized Use (MMBTU)	2,899	418		3,317	2014		6,904	569
	Original Use (MMBTU)	2,899	411		3,310	2015		6,965	529
2014	Weather-Normalized Use (MMBTU)	2,746	364		3,110				
	Original Use (MMBTU)								



Enter into Annual Report Table 2, line 14

*Helping Massachusetts Municipalities Create A Cleaner Energy Future*



# MassEnergyInsight Weather Normalization – Its by Fuel

		Electric	Gas	Grand Total
2012	Weather-Normalized Use MMBTU)	2,681	362	3,043
2012	Original Use (MMBTU)	2,681	305	2,986
2013	Weather-Normalized Use MMBTU)	2,899	418	3,317
2013	Original Use (MMBTU)	2,899	411	3,310
2014	Weather-Normalized Use MMBTU)	2,746	364	3,110
2014	Original Use (MMBTU)	2,746	409	3,154
2015	Weather-Normalized Use MMBTU)	3,003	409	3,413
2015	Original Use (MMBTU)	3,003	463	3,467



*Helping Massachusetts Municipalities Create A Cleaner Energy Future*



# CRITERION 3 – Table 2 – Using Energy Star Portfolio Manager for Weather Normalized Energy Use Data – Its by Building

Property Id	Property Name	Year Ending	Weather Normalized Site Energy Use (kBtu)	Site Energy Use (kBtu)
4520347	High School	12/31/2014	102,648.4	107,242.8
4520346	Public Library	12/31/2014	54,738.3	55,263.6

## In Portfolio Manager:

1. Create a template
2. Choose Energy Performance Metrics
3. Weather Normalized Site Energy Use
4. Include all properties



# **CRITERION 3 – Table 2 – Using Energy Star Portfolio Manager for Weather Normalized Energy Use Data – Its by Building**

## **Reporting for Green Communities Annual Report:**

1. Run Weather Normalized Site Energy Use report
2. Sum all weather normalized building energy use
3. Add energy use of any non-normalized energy uses:
  - a. Any buildings not included in Portfolio Manger report
  - b. Vehicles
  - c. Street Lights & Traffic Lights
  - d. Water/Sewer
4. This is the total weather-normalized energy use
5. Repeat for each year
6. Enter into Annual Report Table 2, line 14



# CRITERION 3

## 4. Complete Table 4: Energy Conservation Measures (ECMs)

Update your ECMs in Table 4 by: 1) changing the status and status date for any ECMs already included, 2) adding any new ECMs, 3) and providing an ECM type in Column F.

If your community uses an Energy Management Services (EMS) Agreement, your EMS annual report may be used to fulfill your Green Communities Annual Report Table 4 requirement. Please provide the date it was filed with DOER, or the date it will be filed if filing is anticipated in the next six months. Other efficiency measures undertaken independently of the performance contract should be reported using Table 4. All other portions of the Green Communities Annual Report must be completed.

DATE:

## 5. Complete Table 5: Renewable Energy Projects

Update your RE projects in Table 5 by: 1) changing any status dates, 2) adding, in bold, any new RE projects, and 3) drawing a line through any RE projects that have been abandoned.

Does your Green Community use any energy produced by renewable energy produced within your community? For example, solar PV systems installed on school or municipal buildings, RE PPAs in which the town buys the electricity, or renewable thermal. Please Reply NO or YES. (Delete the appropriate word in the box to the right) If YES, complete Table 5.

<Select  
YES or  
NO>





# CRITERION 3 – Table 4

## Purpose

- Provide, in one place, a summary of ALL the efficiency work that your Green Community has completed
- To enable DOER to understand the magnitude of effort and funding, beyond GC grant projects, it takes Green Communities to reach a 20% reduction in energy use
- No silver bullet – just lots of hard work



# CRITERION 3 – Table 4

	ECMs			Status		Energy Data		
Category	Building Name	Energy Conservation Measure Name	ECM Type (select one from drop-down)	Status (select one from drop-down)	Status Date (Completed with month/year or planned Qtr/year)	Projected Annual Electricity Savings (kWh)	Projected Annual Natural Gas Savings (therms)	Projected Annual Gasoline Savings (gallons)
Buildings	Green School	Lighting Retrofit	Interior Lighting	Complete	Feb-11	95,252	0	0
Buildings	Town Hall	New Boiler	HVAC	Planned	Q3 2015	0	17,122	0
Street and Traffic Lights	Street Lights	LED Conversion	Exterior Lighting	Active	Jan-15	6,000	0	0
Water/ Sewer/ Pumping	Drinking Water Treatment Plant	2 Variable Speed Drives	Pump/Motor/Drive	Complete	Q3 2012	500,000	0	0
Vehicles	Vehicles	Anti-idling retrofit for 2 police cruisers	Vehicles	Complete	Q2 2014	0	0	400
	<b>TOTAL Projected Savings</b>					<b>601,252</b>	<b>17,352</b>	<b>660</b>
	<b>TOTAL MMBtu SAVINGS</b>			<b>4,791</b>		<b>2,051</b>	<b>2,412</b>	<b>82</b>



# CRITERION 3 – Table 5

Criterion 3 Step 5: Complete Table 5  
- Renewable Energy

Measure				Status		Energy Data				
Location	Site Type	Renewable Energy Project Name	Renewable Energy Project Type	Status (select one from drop-down)	Status Timeline (Completed with month/year or planned Qtr/year)	Size of System (kW or MMBtu)	Projected Annual Electricity Generation (kWh)	Thermal Fuel(s) Displaced	Projected Annual Thermal Fuel Savings	Projected Annual Gasoline Thermal Fuel Units
To insert additional rows, select this row, right-click, and select "Insert."										
TOTAL Projected Savings							0	0	0	0
TOTAL RENEWABLE ENERGY PRODUCTION (MMBtu)					0		0			



Helping Massachusetts Municipalities Create A Cleaner Energy Future



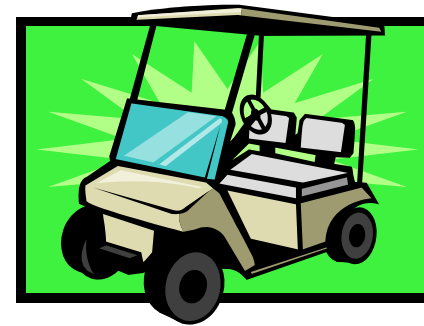
# CRITERION 3

## COMMON ISSUES & QUESTIONS

- Not reaching 20 percent does not impact GC designation
- Renewable energy use is still counted as energy usage
- Green Communities reaching 20 percent:
  - Seven Green Communities recognized in 2014 for 20 percent
  - Must be after completion of 5<sup>th</sup> or 6<sup>th</sup> year
  - Approved annual report



# CRITERION 4 – Fuel-Efficient Vehicles



# CRITERION 4

## Policy and Inventory Worksheets

1. Click on the yellow cells for Questions 1-6 and choose from the drop down box
2. Type any narrative into the yellow cell under Question 7
3. Check the green Narrative cell under Question 8 for accuracy
4. Click on the yellow Narrative under Question 8a if your are using an Alternative Compliance method for Criterion 4 and fill in the status of the Alternative Compliance method
5. Review the Criterion 4, Table 6 worksheet. Check the green cells for accuracy and provide any information requested from Question 5, in the purple cell at the bottom of the Vehicle Policies worksheet
6. Fill out Table 6 as appropriate



# CRITERION 4

## Criterion 4 - Purchase Fuel Efficient Vehicles

**1) Municipalities must have a fuel efficient vehicle policy that reflects the most recent guidance provided by the Green Communities Division** (see <http://www.mass.gov/eea/energy-utilities-clean-tech/green-communities/gc-grant-program/criterion-4.html> for most recent guidance).

**2) Did you update your vehicle policy this year?**

<Select YES or  
NO>

**3) Did you install electric vehicle charging stations?**

<Select YES or  
NO>

**4) Did you implement anti-idling technology and/or campaigns?**

<Select YES or  
NO>

**5) Did you implement a driving monitoring system that records miles driven and/or fuel consumption?**

<Select YES or  
NO>

**6) Did you implement a fuel use reporting system for operators on fuel efficiency?**

<Select YES or  
NO>



*Helping Massachusetts Municipalities Create A Cleaner Energy Future*



# CRITERION 4

7) Any other policies and/or technologies not listed above? Please estimate annual fuel savings from each new technology or policy in the yellow box below. Also please attach any new vehicle policies and technologies adopted by the municipality to this annual report.

NARRATIVE:

8) For communities that met Criterion 4 through alternative compliance, provide a narrative in the space below of the policies and programs that have been adopted to reduce fuel consumption.

NARRATIVE:

8b) For communities that met Criterion 4 through alternative compliance, provide as a status regarding the success of these programs and policies.

NARRATIVE:





# CRITERION 4

4) Have there been any changes to your vehicle inventory since the last annual report?

<Select YES or  
NO>

5) Please provide the most current vehicle inventory that includes ALL vehicles (Both exempt and non-exempt) for ALL departments, including schools. Please do not report any exempt off-road vehicles, trailers, etc. The inventory submitted with either your most recent Annual Report filing or, if filing for the first time, submitted with your designation application, is either contained in the next worksheet, "Crit 4 - Table 6 Vehicle Inv.," or provided as separate file. In the inventory, 1) note in column L if a vehicle has been acquired since the last annual report, 2) if yes, note what the newly acquired vehicle replaced in the inventory in column M, and 3) note in column N if the vehicle has been retired. NOTE: For the purposes of the program, municipalities must use the EPA combined fuel economy estimate listed at [FuelEconomy.gov](http://FuelEconomy.gov) and ensure that the rating greater than or equal to the requirement for the relevant vehicle type.



*Helping Massachusetts Municipalities Create A Cleaner Energy Future*



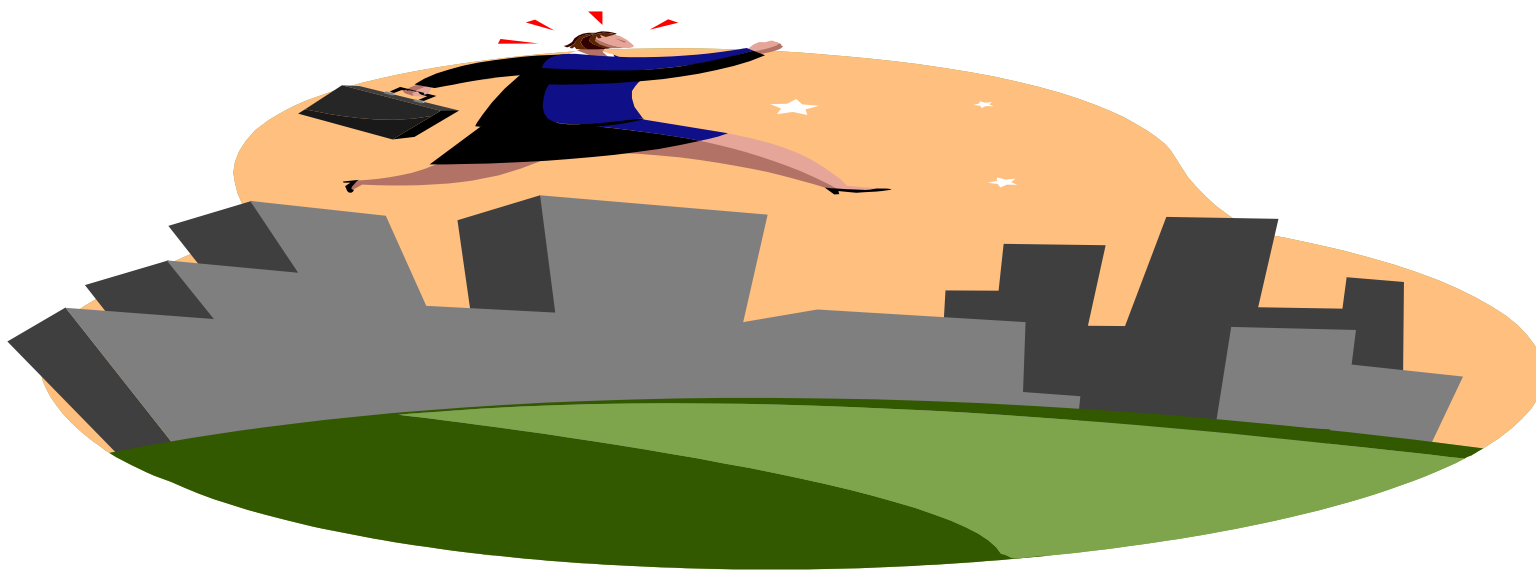
# CRITERION 4 – Table 6

Table 6: *SAMPLE* Vehicle Inventory

[Click here to return to Table 6](#)

Model	Make	Model Year	Month/Year Purchased	Drive System: 2WD, 4WD, or AWD	> 8500 pounds? (Y or N or NA)	Exempt or Non-Exempt? E or NE	COMBINED MPG Rating	Vehicle Function	Is this a new acquisition?	If new acquisition, what vehicle did it replace?	Removed from inventory?
Honda	Civic Hybrid	2013	July, 2013	2WD	N	NE	43	Inspector/ Assessor shared car	YES	see vehicle on line 8 now deleted	
Ford	Crown Victoria	2011	April, 2011	2WD	NA	E	14	Police CRUISER			
Ford	Crown Victoria	1999		2WD	N	NE	13	Assesor			YES

# CRITERION 5 – Stretch Code



*Helping Massachusetts Municipalities Create A Cleaner Energy Future*



# CRITERION 5

## Table 7

1. Check green cells at the top of the page for accuracy
2. Click on the yellow cell at the top of the worksheet and select yes or no from the drop down box to answer the question, “Have there been any new building permits since the Stretch Code became sole effective code?”
3. Check the green cells/rows in Table 7 for Stretch Code Projects for accuracy
4. Add new Stretch Code Projects in the yellow cell/rows for this reporting year
5. Use the drop down box for Column D when choosing if the project is New Residential (NR), Residential Retrofit (RR) or Commercial (C)



# CRITERION 5

## Criterion 5 - Stretch Code Adoption

*Date Stretch Code Concurrency Period Began:*

*Date Stretch Code Became Sole Effective Code:*

*Have there been any new building permits since the Stretch Code became sole effective code?*

<Select YES or NO>

If filing for the first time, please fill out the table below and add rows as as needed. Please list in Table below all residential and commercial projects that were affected by the Stretch Code and for which building permits have been issued since the Stretch Code became the sole effective code, along with accompanying information noted below. If a previous Annual Report was filed, your table from the previous report is provided below for updating. **For notes on Certificate of Occupancy: if New Residential (NR), provide final HERS Rating; If Residential Retrofit (RR) provide HERS rating OR "P" for Prescriptive; If Commercial and > 100K sq ft, note percent energy savings relative to ASHRAE 90.1-2007.**

Table 7 Stretch Code Projects (Add more rows as necessary)				
Address of Building	New Residential (NR), Residential Retrofit (RR) or Commercial (C)	Date Building Permit Issued	Dated Certificate of Occupancy Issued (if not issued, please note NA)	Notes on Cert of Occupancy
To insert additional rows, select this row, right-click, and select "Insert."				

# Other Notes

Please provide in the space below any anecdotal information about your community's experience with the Stretch Code (e.g. local banks loaning more to people purchasing stretch code homes, satisfied homeowners, frustrated builders, etc.).

Please provide in the space below any information about additional measures taken by the community that are consistent with its status as a designated Green Community (e.g. additional as-of-right siting put in place since designation for renewable or alternative energy generation, R&D, or Manufacturing facilities).

Please provide in the space below what percentage of your municipality's electricity consumption is supported by renewable energy generation? Of this percentage, how much of this is onsite generation? How much of this is net metering? How much of this is through the purchase of Renewable Energy Certificates (RECs)?



# COMMON ISSUES & QUESTIONS

- Annual Report Deadline: **Dec. 4, 2015**
- **No report** - ineligible for next GC funding opportunity
- **Failing to adhere to Designation Criteria:**
  - Inefficient vehicle purchases
  - Stretch code violations
  - 1<sup>st</sup> – corrective action plan
  - 1<sup>st</sup> – may impact next GC funding opportunity
  - 2<sup>nd</sup> – ineligible for next GC funding opportunity



# Assistance - Regional Coordinators



WERO – SPRINGFIELD: Jim Barry  
[Jim.Barry@state.ma.us](mailto:Jim.Barry@state.ma.us)



NERO – WILMINGTON: Joanne Bissetta  
[Joanne.Bissetta@state.ma.us](mailto:Joanne.Bissetta@state.ma.us)



CERO – WORCESTER: Kelly Brown  
[Kelly.Brown@state.ma.us](mailto:Kelly.Brown@state.ma.us)



SERO – LAKEVILLE: Seth Pickering  
[Seth.Pickering@state.ma.us](mailto:Seth.Pickering@state.ma.us)



*Helping Massachusetts Municipalities Create A Cleaner Energy Future*





# QUESTIONS?



*Helping Massachusetts Municipalities Create A Cleaner Energy Future*

