

Gronk Playground



DCR Virtual Public Meeting
Thursday, November 2, 2023
Design Presentation Prepared for Online Viewing

Meeting Logistics

- You will have the opportunity to submit comments over the course of the next two weeks at:
 - DCR Public Comments
<https://www.mass.gov/forms/dcr-public-comments>
- Two ways to ask questions during the meeting
 - Use chat feature
 - Raise your hand using the Zoom function, and you will be given permission to unmute and speak.

Please note that this public information meeting will be recorded; the recording will be a public record.



Commonwealth of Massachusetts

Governor

Maura T. Healey

Lieutenant Governor

Kimberley Driscoll

Energy and Environmental Secretary

Rebecca L. Tepper

Department of Conservation and Recreation Commissioner

Brian Arrigo



DCR Mission Statement

*To protect, promote, and enhance our
commonwealth of natural, cultural
and recreational resources
for the well-being of all.*

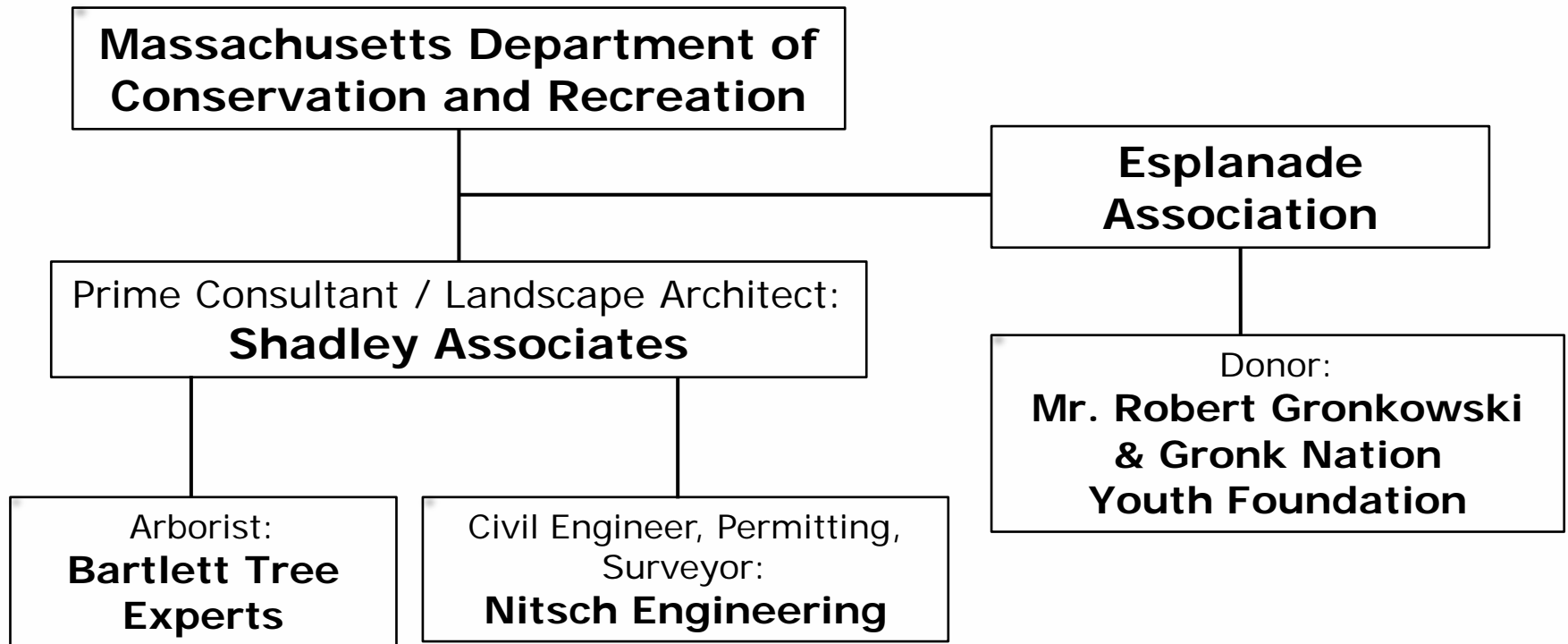
Purpose of Presentation

*To present the final design
and project information for the
Gronk Playground project.*

Agenda

1. Project Background
2. Design Plan
3. Play Elements
4. Additional Information

Project Team



Site Context



GRONK PLAYGROUND

Project Partnership



Learn more at esplanade.org/gronk

GRONK PLAYGROUND

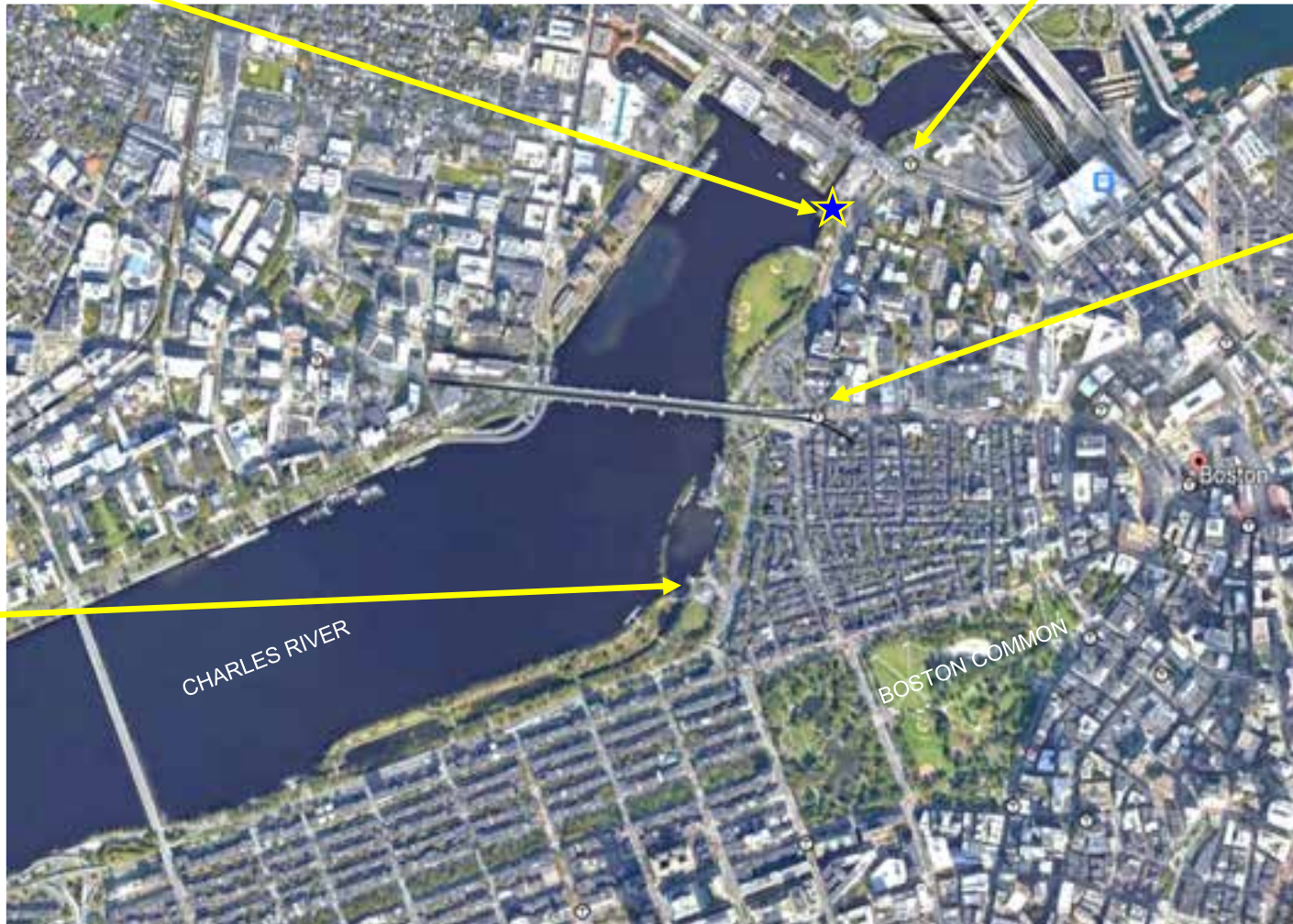
Site Context

Gronk
Playground

Science Park / West End T

Charles /
MGH T

DCR
Hatch Shell



NORTH

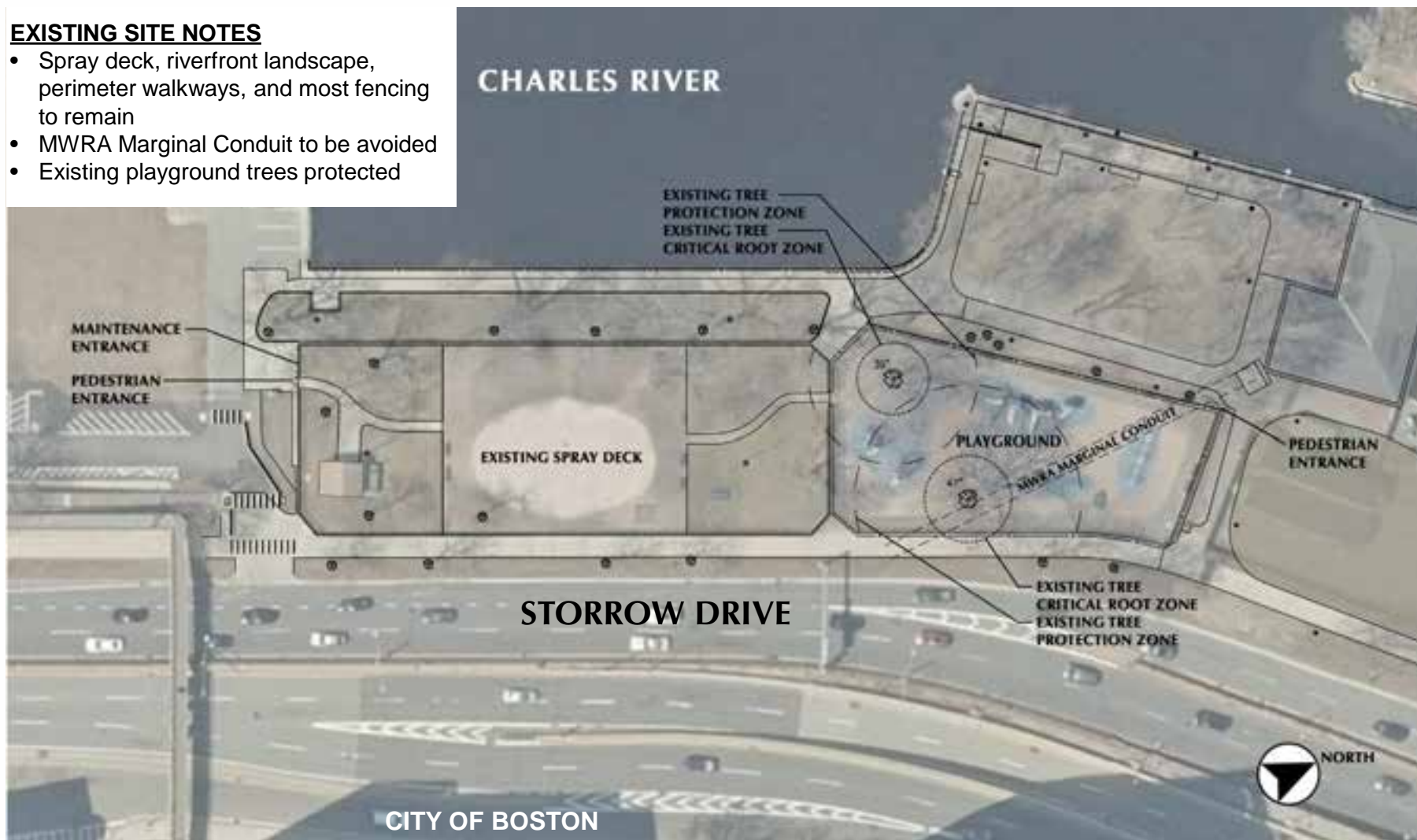


GRONK PLAYGROUND

Project Site

EXISTING SITE NOTES

- Spray deck, riverfront landscape, perimeter walkways, and most fencing to remain
- MWRA Marginal Conduit to be avoided
- Existing playground trees protected

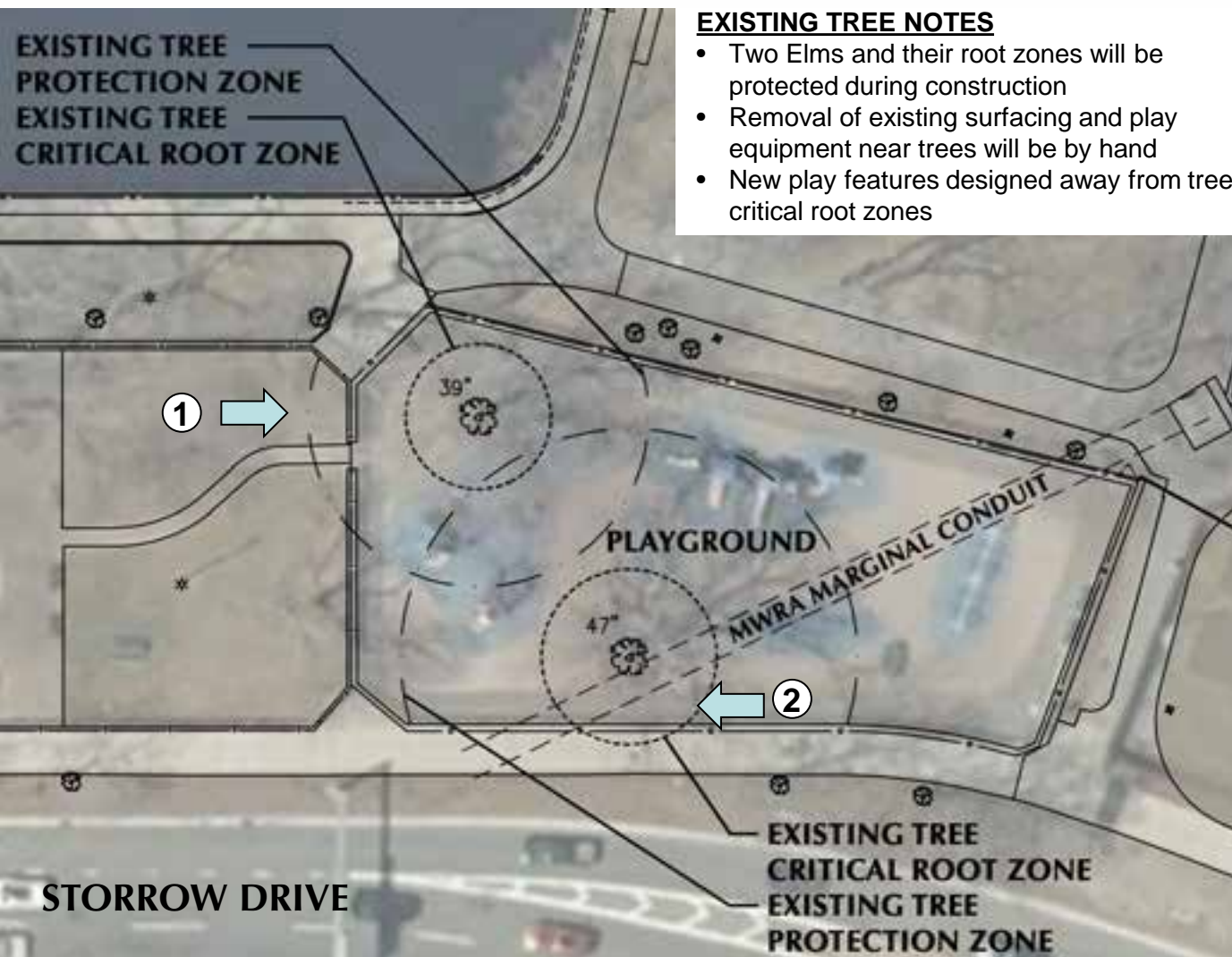


GRONK PLAYGROUND

Existing Conditions



Existing Conditions – TREES - Protect!



EXISTING TREE NOTES

- Two Elms and their root zones will be protected during construction
- Removal of existing surfacing and play equipment near trees will be by hand
- New play features designed away from tree critical root zones



GRONK PLAYGROUND

Project Goals

- Create a **fun and welcoming** playground for all children with new elements tailored to all abilities
- Increase awareness of the **importance of fitness** and encourage physical exercise and movement
- Promote **cooperative play**
- Reflect the **riverfront context**
- Complement the **historic character** of the Esplanade and create an **iconic destination**

Design Considerations

- Age groups are 2-5 years and 5-12 years
- All equipment meets safety regulations and accessibility codes
- The site is 100% universally accessible and compliant with the Americans with Disabilities Act (ADA)
- Accommodates social interaction in a variety of spaces
- Features of nearby playgrounds are complemented, not duplicated, to provide the neighborhood a variety of play options
- Existing shade trees are preserved

Project Update

Since Public Meeting #1 in February 2023:

- Revisions to play equipment layout to improve protection of the existing Elm trees in coordination with the team's arborist
- Final design of custom play panels & features
- Further technical development of the design

Project Permitting is Complete:

- Boston Conservation Commission Order of Conditions
- Chapter 91 Minor Modification
- MWRA 8(m) Permit
- Boston Landmarks Review
- Massachusetts Historical Commission PNF

Gronk Playground Final Design Plan



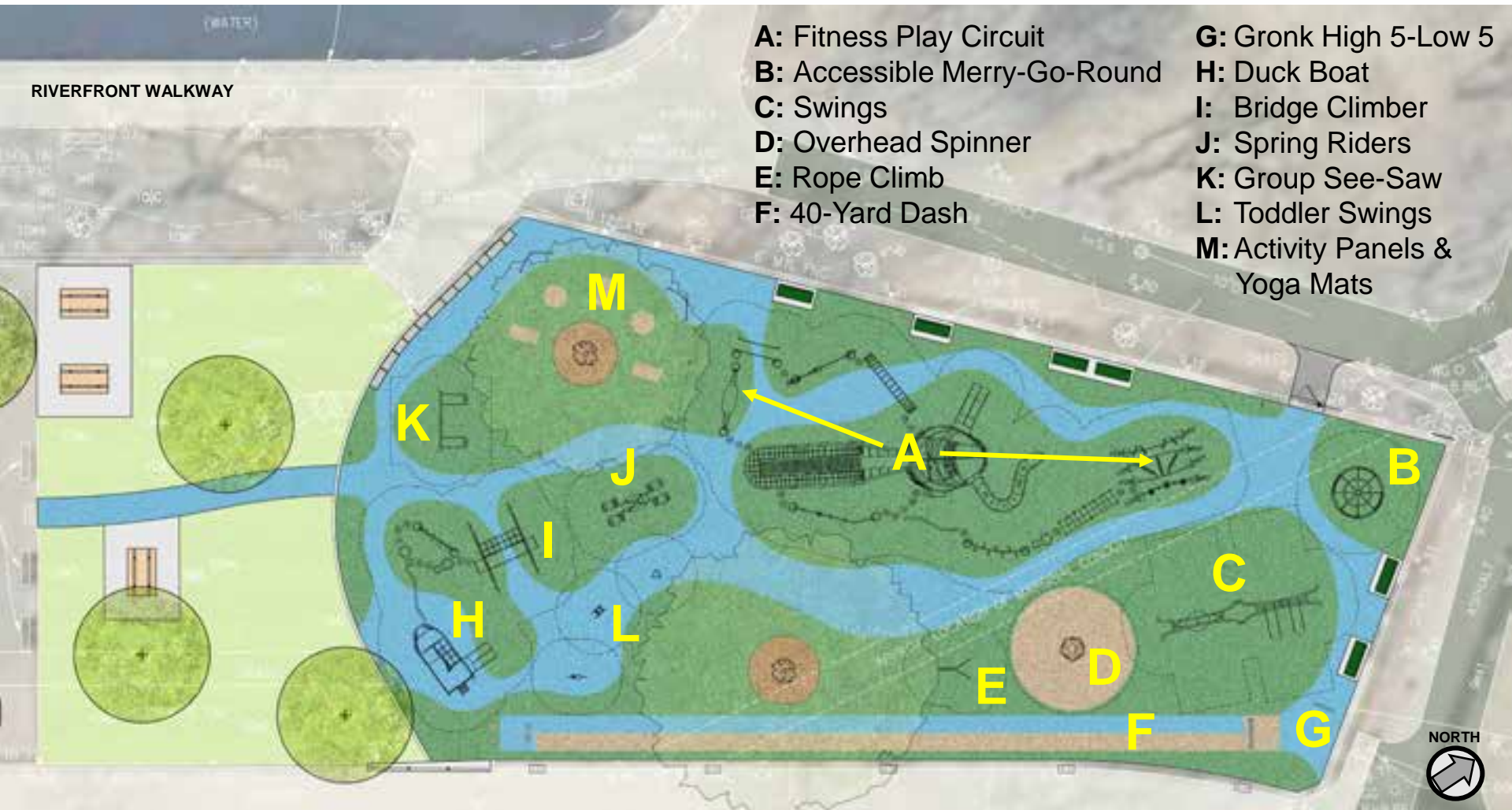
Gronk Playground Final Design Plan



Playground Elements

RIVERFRONT WALKWAY

- A:** Fitness Play Circuit
- B:** Accessible Merry-Go-Round
- C:** Swings
- D:** Overhead Spinner
- E:** Rope Climb
- F:** 40-Yard Dash
- G:** Gronk High 5-Low 5
- H:** Duck Boat
- I:** Bridge Climber
- J:** Spring Riders
- K:** Group See-Saw
- L:** Toddler Swings
- M:** Activity Panels & Yoga Mats



GRONK PLAYGROUND

Fitness Play Circuit



GRONK PLAYGROUND

Fitness Play Circuit



Custom panels with
inspirational quotes from
athletes on the football



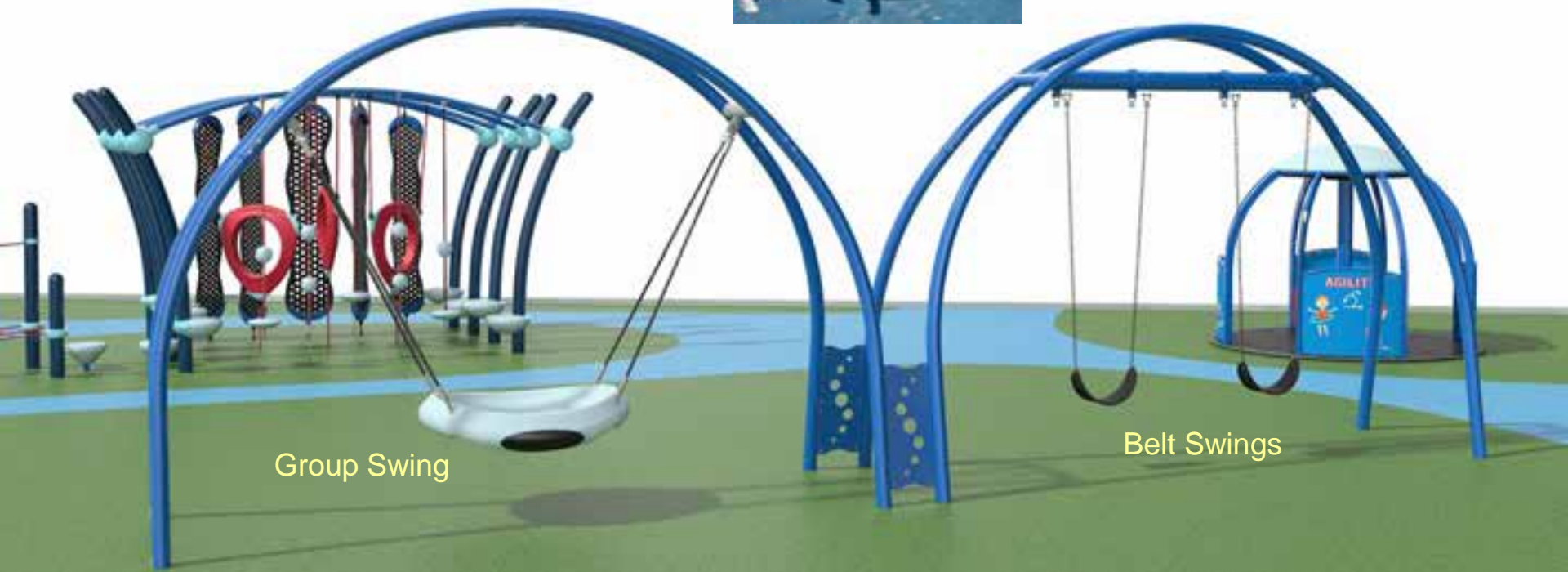
GRONK PLAYGROUND

Accessible Merry-Go-Round



Custom Panels:
Balance, Speed, Agility & Power

Swings: Ages 5-12



Overhead Spinner and Rope Climb



D: Overhead Spinner



E: Rope Climb



40-Yard Dash and Gronk High 5-Low 5



F: 40 Yard Dash



G: Gronk High 5-Low 5

Duck Boat



Bridge Climber



Custom play structure modeled after
the Zakim Bridge for Boston context

Group See-Saw and Toddler Swings

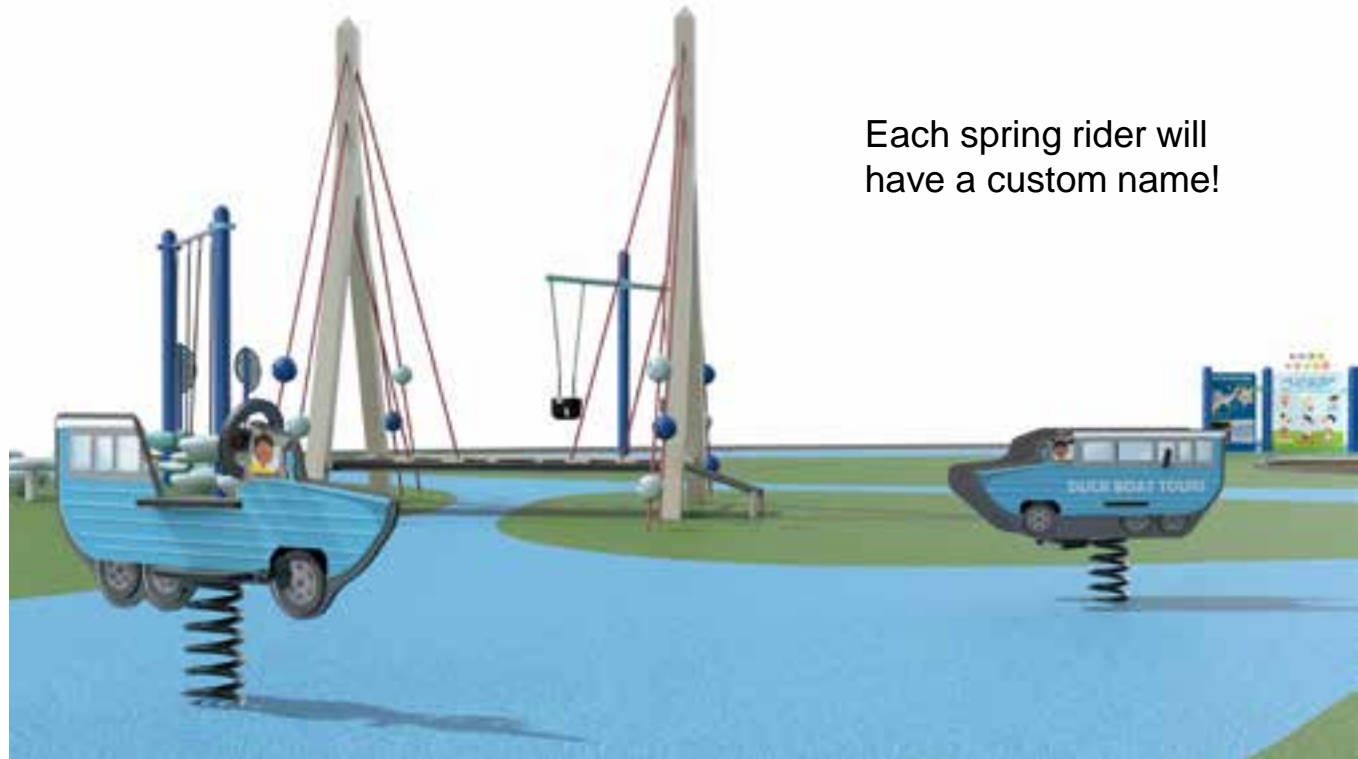
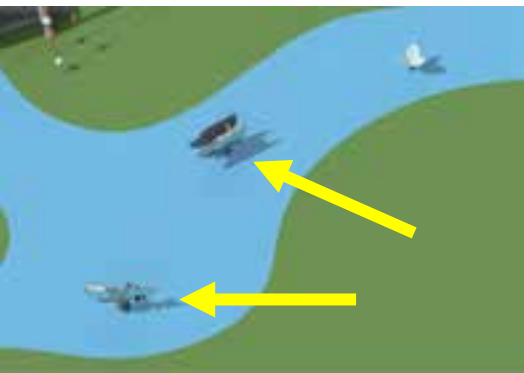


J: Group See-Saw



K: Toddler Swings

Spring Riders



Each spring rider will
have a custom name!

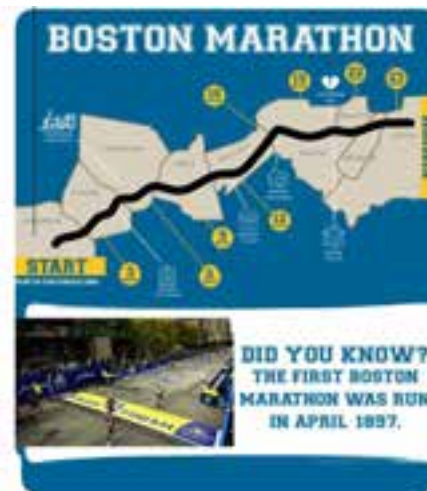
Activity Panels & Yoga Mats



- Custom 2-sided panels with different fitness themes and local landmarks
- Rubber surfacing pattern with “yoga mats”



- Yoga moves
- Stretches
- Sensory activities
- Sign language
- Tortoise & Hare character cutouts
- Boston Marathon route
- Boston Landmarks map



Playground Elements



Play Equipment – Trees turned off for better visibility of the play equipment

Playground View



GRONK PLAYGROUND

Playground View



GRONK PLAYGROUND

Comments & Questions



GRONK PLAYGROUND

Additional Information

- Recording and tonight's slide deck will be available at:
 - www.mass.gov/dcr/past-public-meetings
- If you have comments on this project:
 - Submit online: www.mass.gov/dcr/public-comment
 - Deadline: **Thursday, November 16, 2023**

Please note: the contents of comments submitted to DCR, including your name, town and zip code, will be posted on DCR's website. Additional contact information provided, notably email address, will only be used for outreach on future updates to the subject project or property.

- If you wish to subscribe to a DCR general information or project-related listserv: contact DCR's Office of Community Relations via email at mass.parks@mass.gov

Thank You!



**Sliding towards
the finish line!**