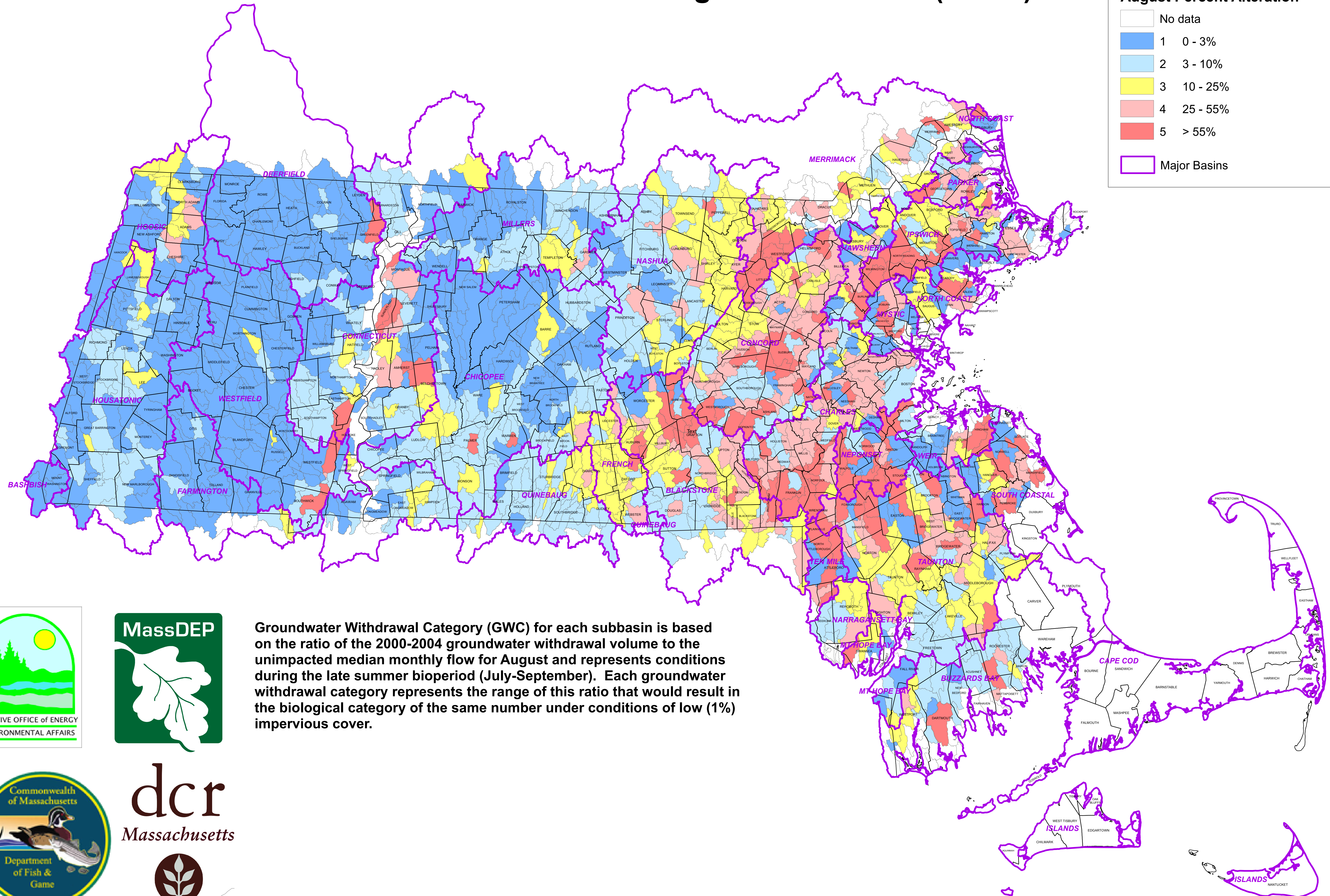
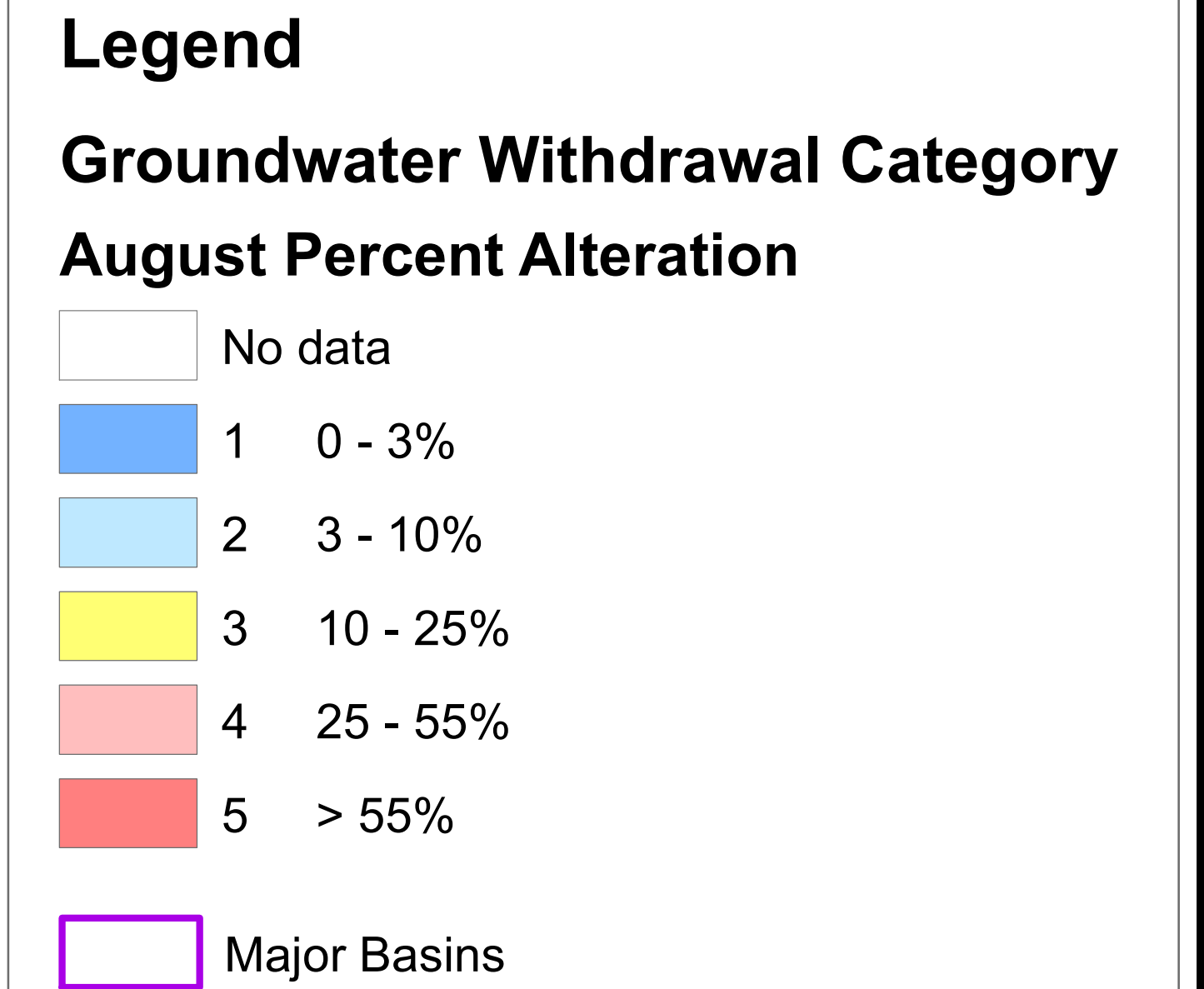


Groundwater Withdrawal Category (GWC) for the Sustainable Water Management Initiative (SWMI)



Groundwater Withdrawal Category (GWC) for each subbasin is based on the ratio of the 2000-2004 groundwater withdrawal volume to the unimpacted median monthly flow for August and represents conditions during the late summer bioperiod (July-September). Each groundwater withdrawal category represents the range of this ratio that would result in the biological category of the same number under conditions of low (1%) impervious cover.

