



Welcome!

**Azalea Drive over Herring River
Bridge Replacement Project
Harwich, MA | Project File No. 608617**

DESIGN PUBLIC HEARING

**Virtual Meeting
Thursday, February 11th, 2021**

Introduction

- **MassDOT Project Manager**
 - John Fallon
- **Consultant Design Engineer – Dewberry Engineers Inc.**
 - Dan Johnson, P.E.

Project Team

Town of Harwich
Project Proponent

Dewberry Engineers, Inc. (DEI)
Responsible for Design

MassDOT's Highway Division
Responsible for administering the Design Process and providing
Resident Engineer Services

Federal Highway Administration
Responsible for Oversight

Summary of Public Outreach

Previous:

- October 2017 – Design Effort Launched
- March 2018 – Coordinated with Town – Initial Site Meeting

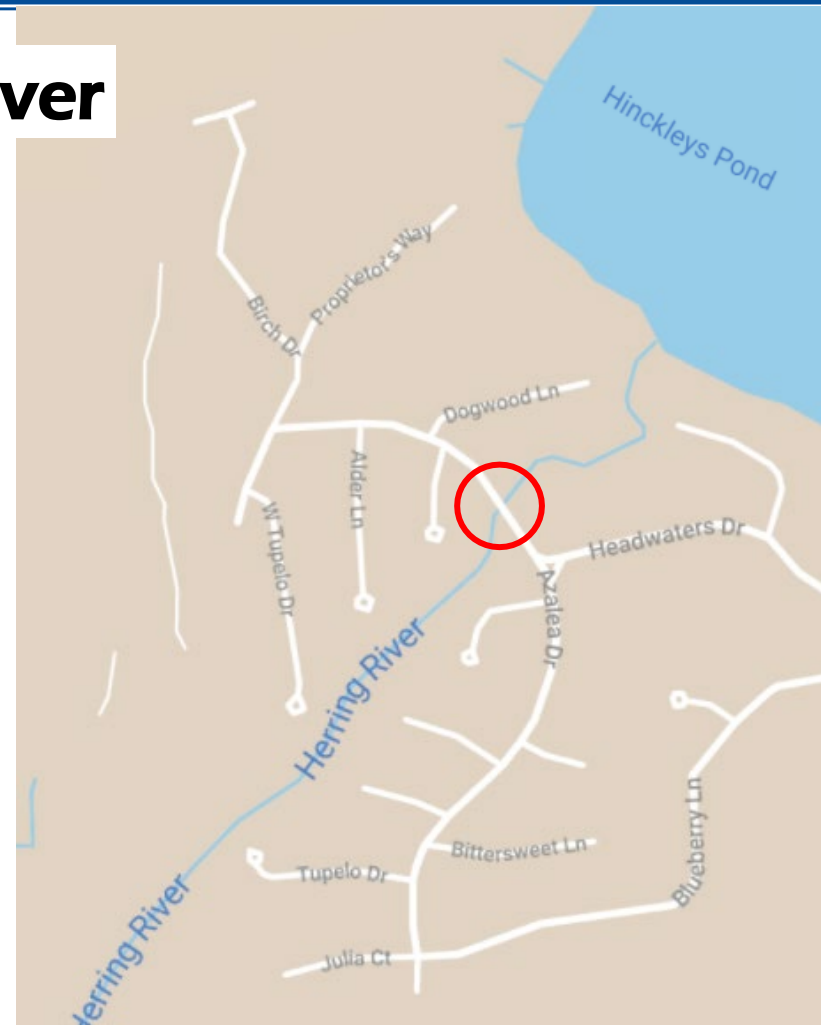
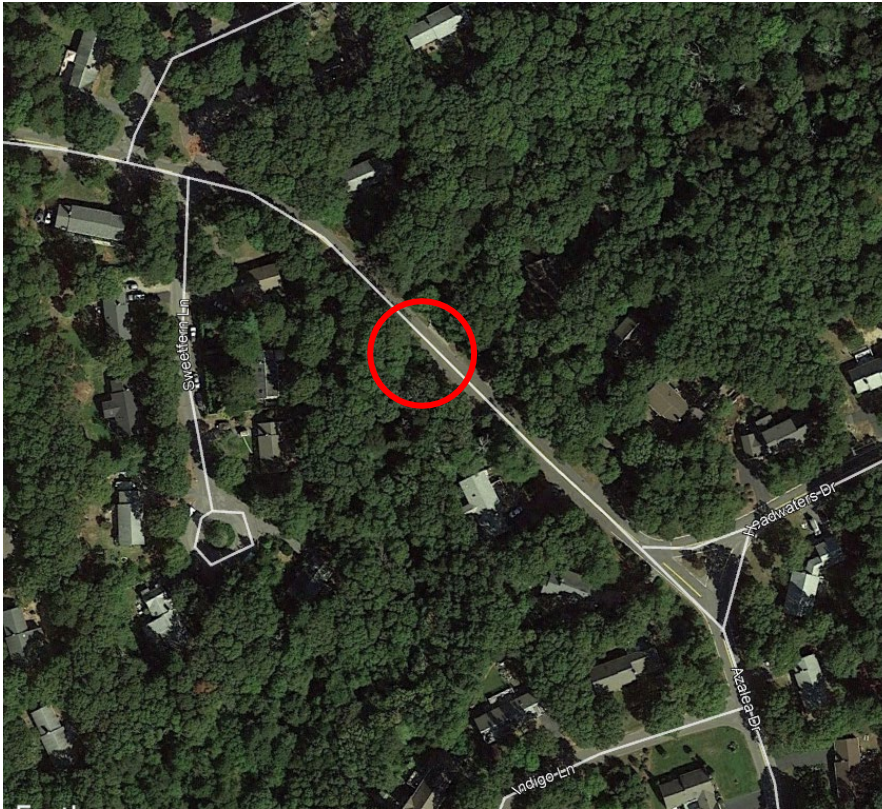
Today:

- **February 2021 – Public Hearing**



Project Area

Azalea Drive over Herring River



**Why do we need
this project?**



Existing Issues

2016 and 2018 Bridge Inspections Indicate:

- Poor bridge drainage with roadway ponding
- Standing water making its way thru bridge deck & beams
- Substandard sidewalks and approach roadways
- Non-standard bridge railing
- Non-current live load capacity (H20)

Elements Beyond Repair:

- Beams
- Deck and rails

Sound for Reuse:

- Abutments & wingwalls to be retained for earth embankment support only—but not to support the new bridge

Existing Issues (cont.)



**Deficient sidewalks, railing,
standing water at bridge joint**

**Water infiltration thru
deck and beams
causing deterioration**



Project Goals

- **Update Structurally Deficient Bridge**
 - Compliant with current AASHTO requirements (AASHTO HL-93)
- **Improve Water/Drainage Issues**
 - New roadway Profile, moved low spot, new drainage basins
- **Safety Improvement**
 - New guardrail, lengthening the sidewalk at east side of bridge , wider bridge width, improve driver sight distances
- **Improve Utility Corridor**
 - Three new utility bays with redundant conduits & pipe

Project Scope

- **What is being done?**
 - A structurally deficient bridge is being replaced.
- **What type(s) of work are involved to fix it?**
 - Construct new pile supported abutments, new precast concrete box beam superstructure and regrading approach profiles to reduce steep grades
- **What improvements are being made?**
 - Safety features (sidewalk, guardrails and geometry) will be upgraded to meet current standards
 - Grading and drainage will be improved to prevent ponding of water on bridge/road and prevent bridge deterioration
 - New utility (water, electrical, phone & cable) is being replaced

**How will traffic
be affected?**



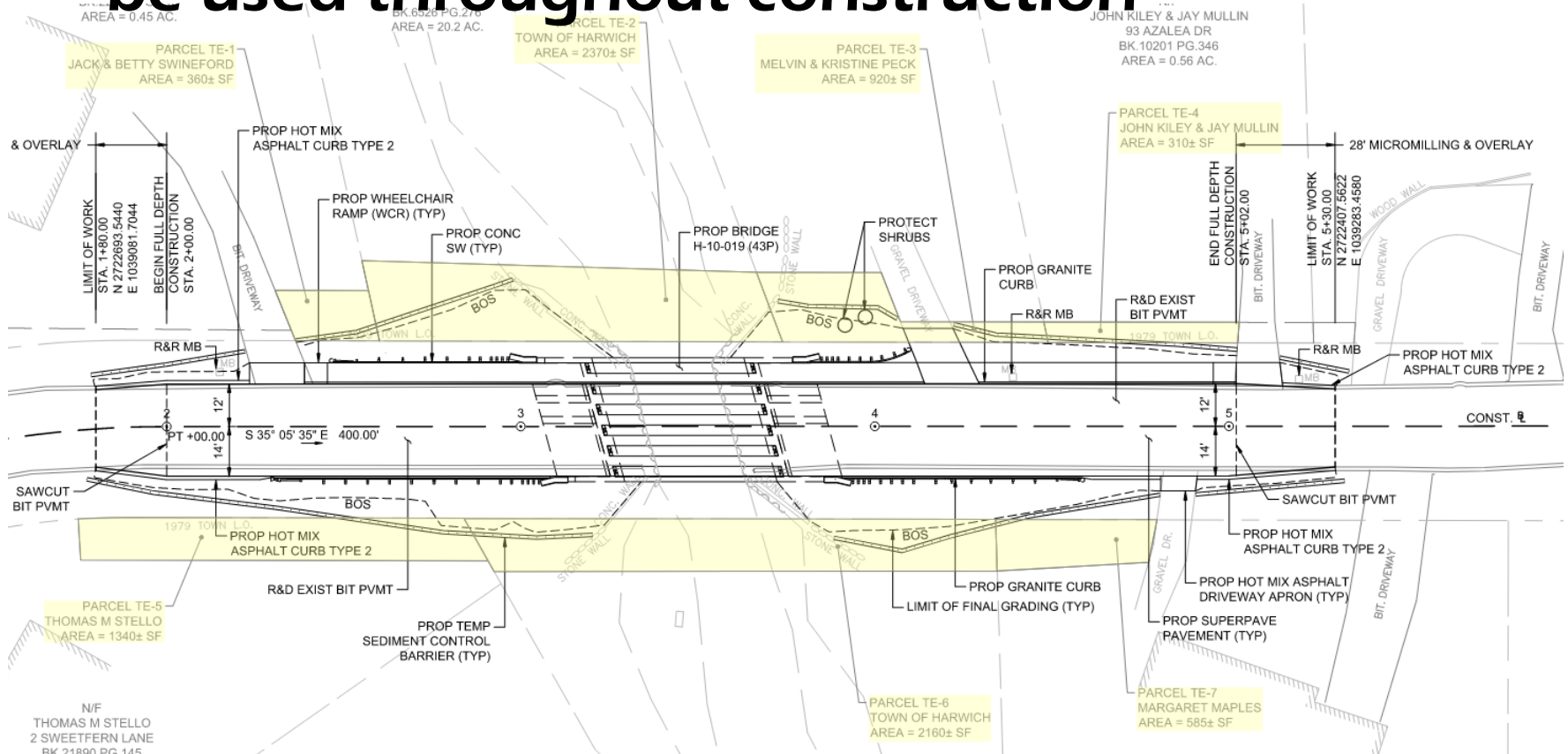
Construction Staging

The bridge replacement will be done in stages:

- A temporary pedestrian bridge will be installed to protect and redirect pedestrian traffic away from construction zones**
- Half the existing bridge will be replaced at a time, keeping the other side open at all times**
- One lane of alternating traffic will be required for majority of construction w/ minimum 12'-0" lane widths**

Construction Plans

– Proposed easement area and work limits to be used throughout construction



ALERT: Traffic Impacts

- Single Lane Closures requiring alternating traffic will be utilized

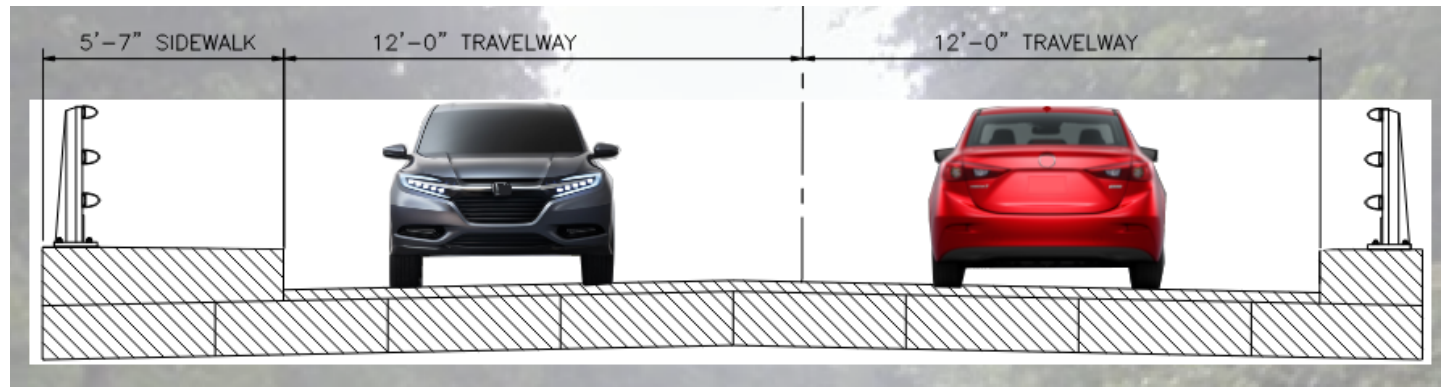
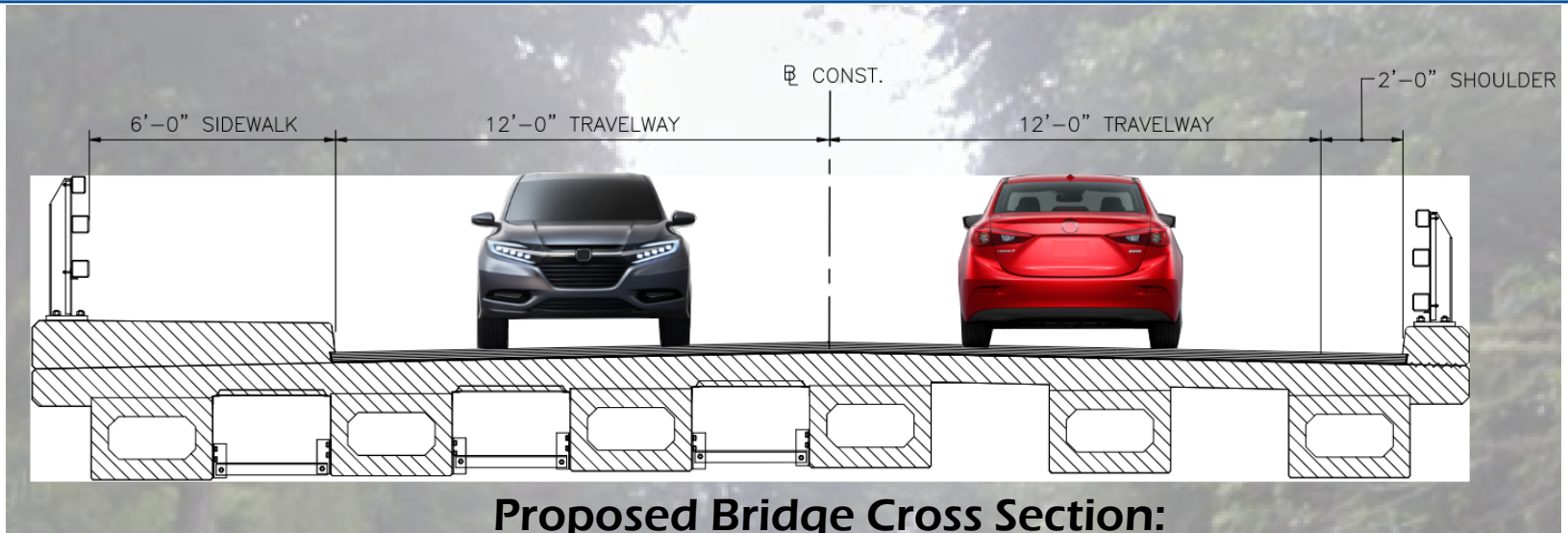


Proposed Improvements

- **Replace the bridge**
- **New structure will have:**
 - **Two, 12-foot travel lanes**
 - **One, 2-foot shoulder**
 - **One, 6-foot sidewalk extending to adjacent driveways**
 - **New safety curb and railings**
 - **Revised roadway profile for improved drainage**

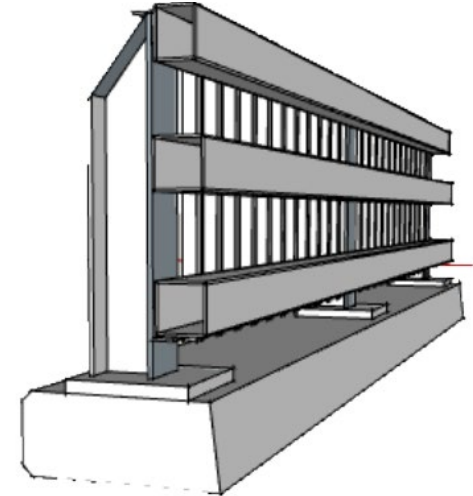


Proposed Improvements cont.



Proposed Improvements cont.

Proposed Railing

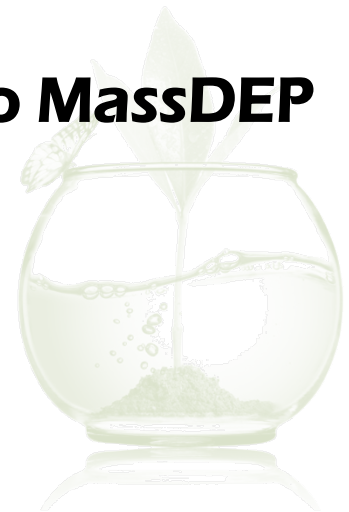


Proposed Concrete Beam



Environmental Permitting

- **Section 401 Water Quality Certification – MassDEP**
- **Section 404 General Permit– US Army Corps of Engineers**
- **Section 106 of the National Historic Preservation Act of 1966 – MassDOT Cultural Resource Unit**
- **NEPA Certification – CE Checklist**
- **The public can provide written comment to MassDEP during the WQC process**



Project Schedule

**25% Design
Submittal
Fall 2020**

**75% Design
Submittal
Summer,
2021**

**Construction
Starts
Late 2022/
Early 2023**

**Design Public
Hearing
February 2021**

**100% Design
Submittal
Winter
2021/2022**

Next Steps/Meeting

- **Following today's Public Hearing, comments will be accepted for inclusion into the official hearing transcript for ten (10) days**
- **Next steps:**
 - Incorporate review comments, where feasible, into the design of the project
 - Prepare 75% and 100% design submittals for MassDOT and Town of Harwich to review
 - Obtain environmental approvals
 - Finalize ROW and easement limits
 - Prepare plans for bidding
 - Advertise for bidding

Contact Information



- **Email comments directly to MassDOT (preferred)**
 - Dot.feedback.highway@state.ma.us
 - Subject Line: Public Hearing Webinar Comments: Project File No. 608617
- **Website address (Project Handout Form)**
 - www.mass.gov/orgs/massachusetts-department-of-transportation
- **Mail Comments to MassDOT**
 - Include last page of handout
 - Comments must be postmarked within 10 days of when webinar was published for inclusion in public hearing transcript
 - Mail to: Patricia A. Leavenworth, P.E.
Chief Engineer MassDOT
Attn: Bridge Project Management,
Project File 608617
10 Park Plaza
Boston, MA 02116



Thank You

Azalea Drive over Herring River
Harwich | Project File No. 608617

DESIGN PUBLIC HEARING

Virtual Meeting
Thursday, February 11, 2021