

Herman Covey WMA Pitch Pine and Oak Woodland Restoration Project Update (CV-HC-TS3)

Location

Site: Herman Covey Wildlife Management Area (WMA)
Towns: Belchertown, Ware
District: Connecticut Valley

Project Update – Acreage Change

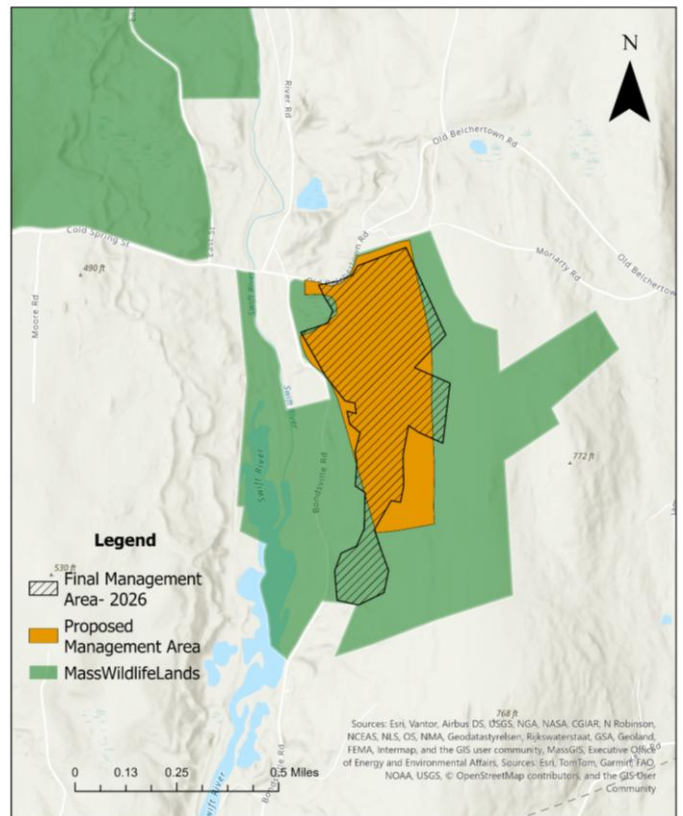
Original Proposed Acreage: 85 acres
Actual Project Acreage: 99 acres

Project Update Summary

Upon completing field data collection, project planning, and permitting, the final project area for the pitch pine and oak woodland restoration at Herman Covey WMA was shifted slightly from the area outlined in the initial project proposal (see map).

In order to limit any environmental impacts to intermittent stream crossings and wetland resource areas, the skid roads and project area were adjusted from the original proposed outline (the orange polygon in the map). When the project outline was adjusted, a small adjacent area of priority natural community (Open Oak Forest/Woodland, S3, and Ridgetop Heathland, S2) was identified during field work and incorporated in the initial restoration effort. This change results in a slight increase in total acres as compared to the initial proposal (see the revised project area in the hatched polygon in the map).

MassWildlife Forest Cutting Project Update 2026
Herman Covey WMA, Ware, MA



Posted: 3/23/26