

Operations Proposed Diagrams

This page intentionally left blank

Operations Proposed Diagrams

DCR Operations

The proposed diagrams on the next pages address trash and restrooms management, and emergency and maintenance access. Vegetation maintenance is addressed in the Landscape Management Plan (LMP) section.

Trash Removal

Trash receptacles are proposed at a few key locations such as near picnic areas and the playground. Dumpsters are proposed near the Artesani playground, at Parking Lot #2 near the picnic lawn, and at Parking Lot #1 near the proposed new beer garden. Screen enclosures around the dumpsters will minimize their visual impact.

Restrooms and Portable Toilets

New restrooms are proposed on the ground floor of Herter Center, which for ease of maintenance are recommended to be the park's only year-round public restrooms. New restrooms for program-only use are proposed on the upper floor of Herter Center, in the green room pavilion near the Amphitheater, and in the Aquatics operations office.

Portable toilet units (one or two) with screen enclosures are proposed at the Amphitheater, near the Canoe & Kayak rental and near the beer garden. For peak season there are several locations planned for banks of portable units: adjacent to Artesani Parking Lot, near the new Event Lawn and near the beer garden. These are located at the edge of parking lots where they are easily accessible to vehicles for scheduled pickup and dropoff.

Maintenance / Emergency Access

Maintenance vehicles are expected to use the paved park circulation network. The paved paths are proposed to be at least 8'-wide with corner radii of 20' (10' minimum) to accommodate typical maintenance vehicles. In areas where boat trailers require access, the corner radii range from 30' to 60', such as at all parking lot entrances and exits, at Henderson Boathouse and at the High School Rowing.

The access points for maintenance or emergency vehicles entering the park circulation are illustrated on the diagram. At the designated access points, the plan proposes flush or mountable curbs. At the Parking Lots #1 and #2, the 11'-wide striped aisles between the accessible parking spaces serve as the preferred access location.

Areas Managed by Permit Holders

The areas around Henderson Boathouse, the Canoe & Kayak Rental, the Amphitheater, the beer garden, and within the two community gardens are expected to be managed by permit holders, according to MOU agreements with the DCR.

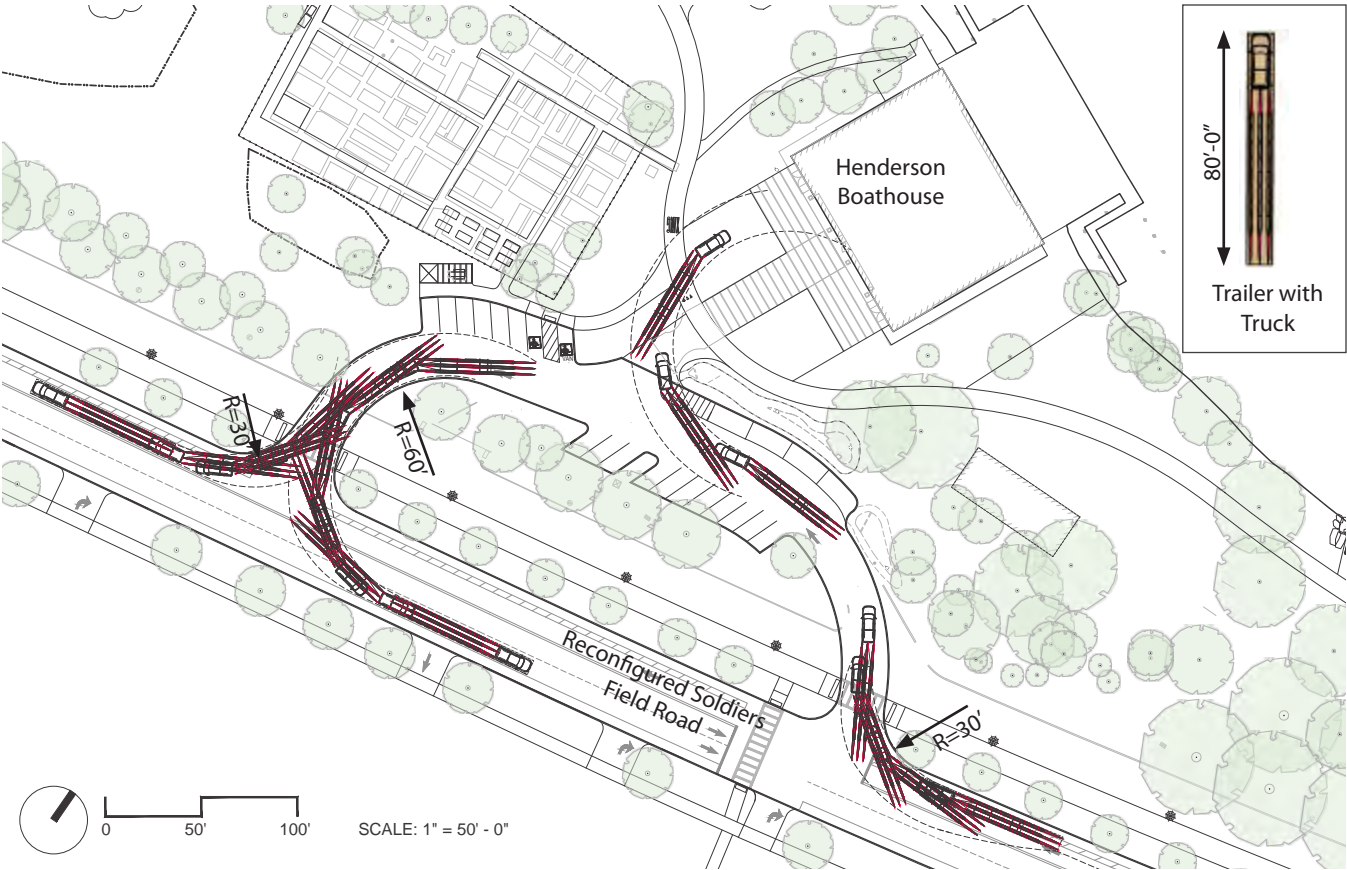


Figure 1. Boat trailer access study at Henderson Boathouse.

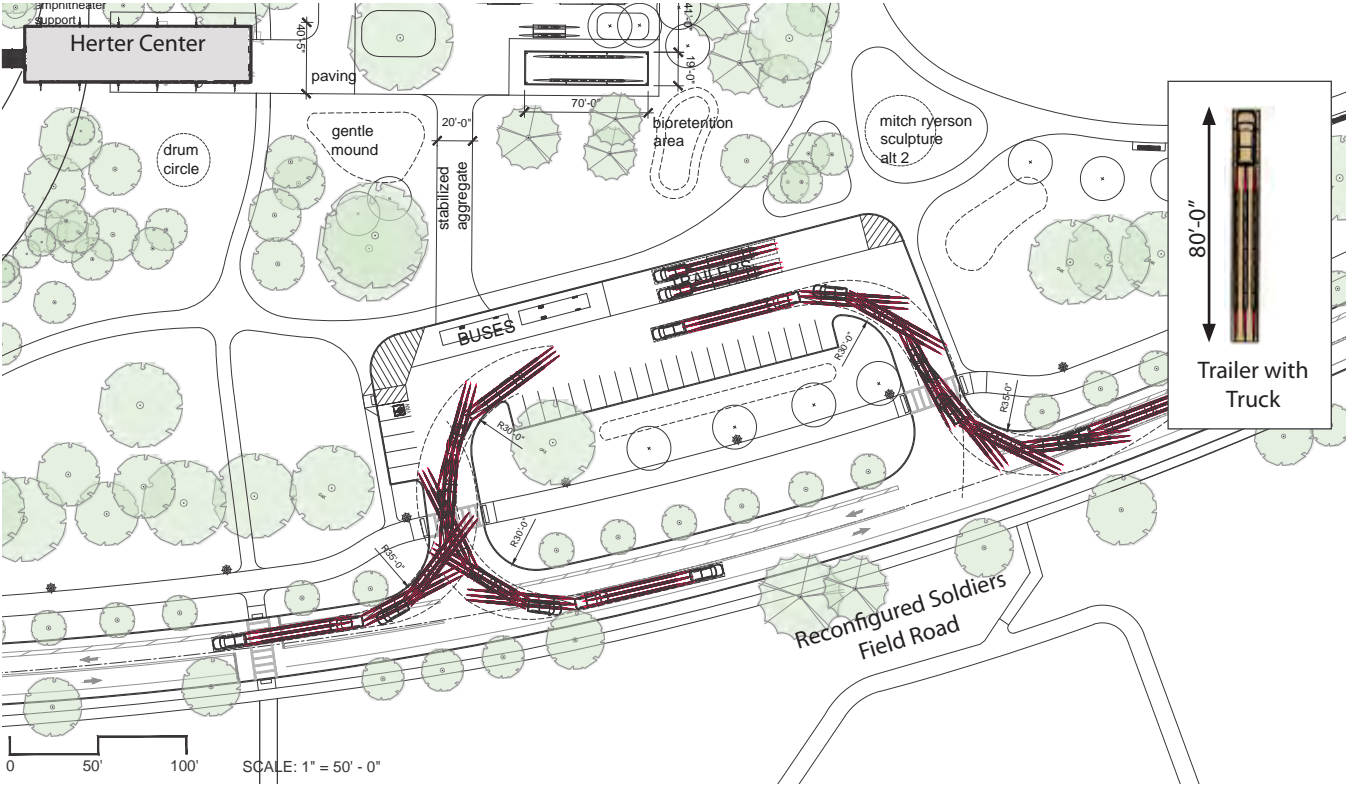


Figure 2. Boat trailer access study for Parking Lot #3

West Area Operations Diagram



Figure 3. West Area Operations Plan

Central Area Operations Diagram

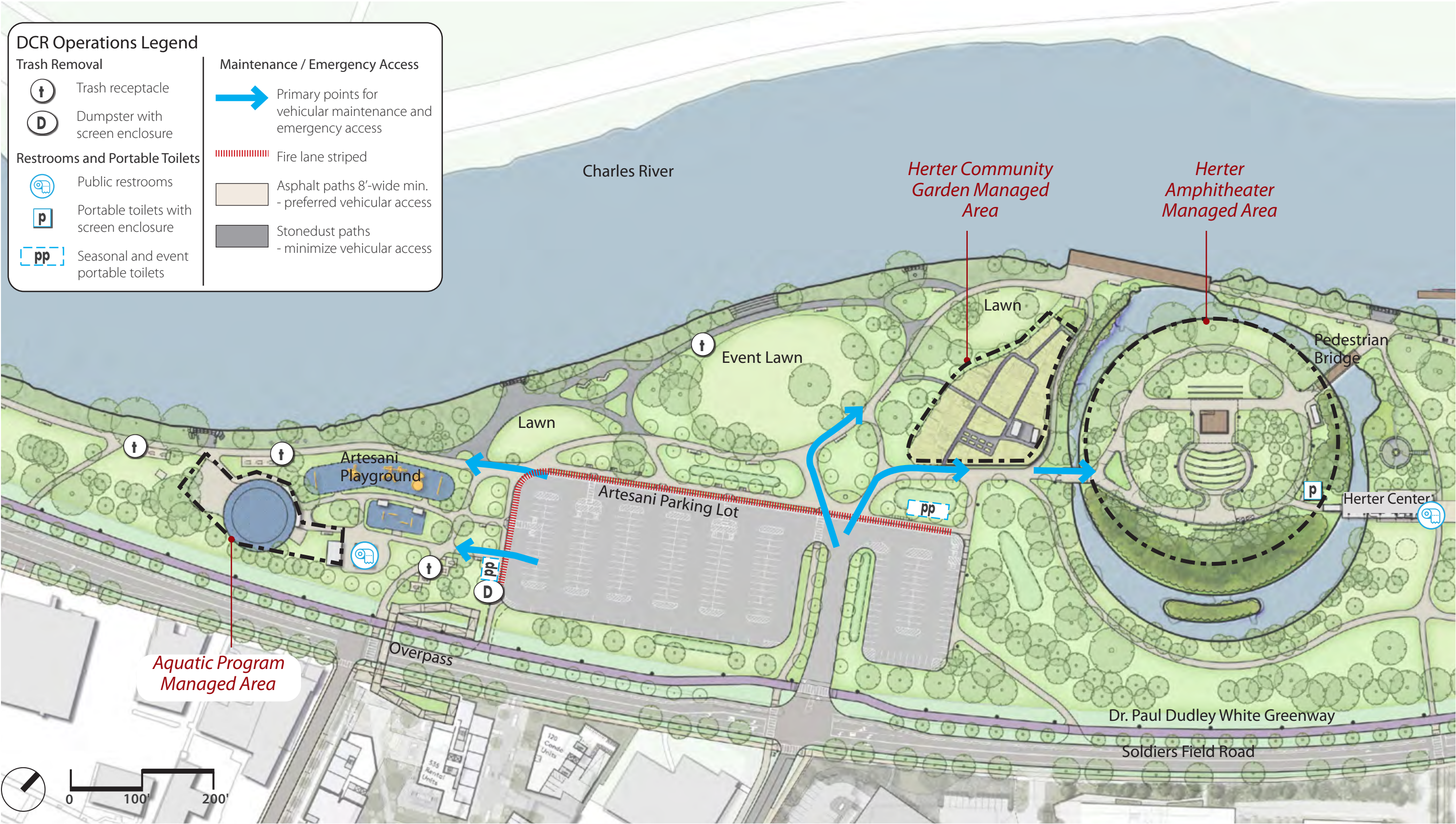


Figure 4. Central Area Operations Diagram

East Area Operations Diagram

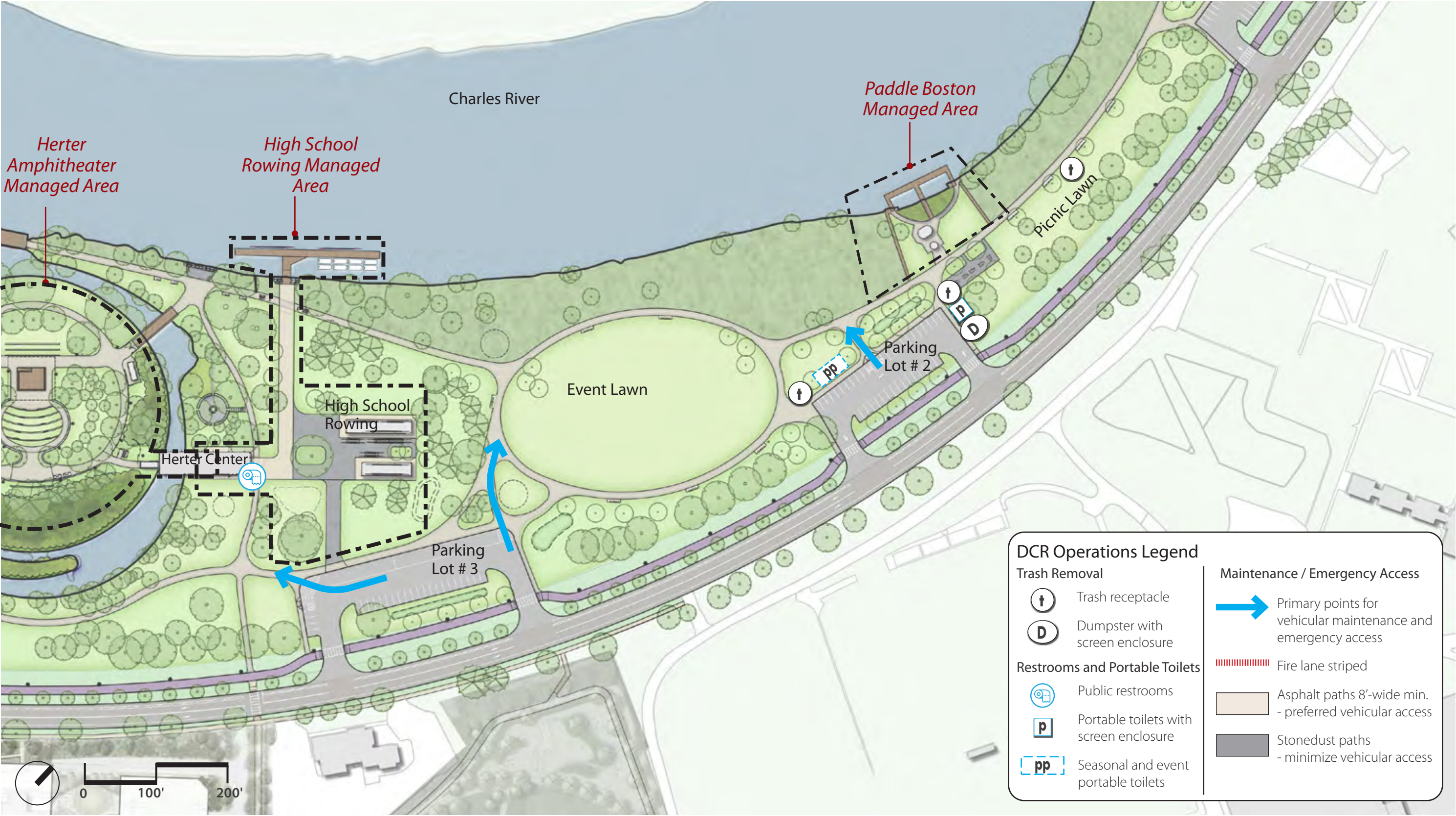


Figure 5. East Area Operations Diagram

Eliot Bridge Area Operations Diagram

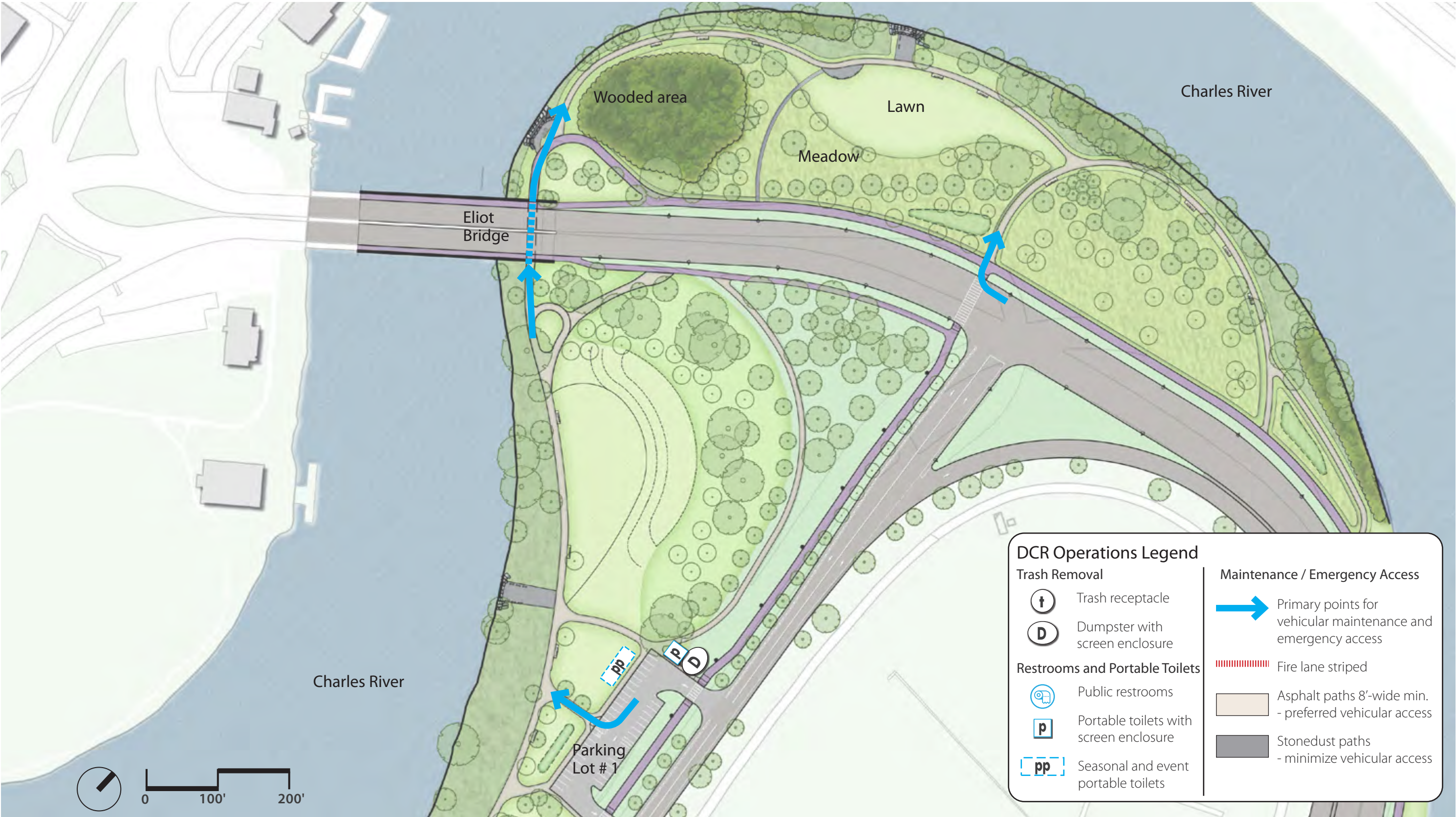


Figure 6. Eliot Bridge Area Operations Diagram

Special Events:

Each of the multitude of special events that take place at Herter Park has their own logistics and requirements. It can be assumed that the event planners will use the new park facilities and circulation improvements to their advantage, and modify their existing plans accordingly. Most events may require minor or no modifications. However the largest event, HOCR, because of its extensive use of the park, has been considered more specifically in the development of the master plan to ensure that it can continue to take place in the future.

Adaptive Recreation Fair

The Adaptive Recreation Fair is an example of an event that requires minor layout modifications. The event is held on and immediately adjacent to Artesani Parking Lot. In recent years, the event layout consisted of a designated separated area on the parking lot and clusters of exhibitor tents along the edges of the adjacent lawns; the lawns have provided various other play and entertainment activities.

With the reconfiguration of Artesani Parking Lot there are a few adjustments needed, as illustrated on the diagrams on the next page.

- Multiple proposed accessible curb ramps will improve the accessibility to the event.
- The reconfigured lawns can accommodate a similar number of exhibitor tents as before in the general location.
- The park’s other proposed circulation and accessibility improvements will also benefit this event, especially the reconfigured loop south of Eliot Bridge and the extended paths past Eliot Bridge.

Head of the Charles Regatta

The HOCR event typically occupies the park Henderson Boathouse to Eliot Bridge, utilizing the area for boat trailers, rowing shells, access of competitors to the river, and an extensive array of vendors and race viewing tents and platforms. The event has grown significantly over the years, and Herter Park has had to accommodate an expanding number of teams, exhibitors, and vehicles.

The master plan has considered the HOCR objective to continue this event at Herter Park, at a similar scale as in prior years. Recent layout plans prepared by HOCR event planners have been the basis for the new diagrams, as illustrated on the following pages.

The reconfigured park will be able to accommodate the event, with the objective of better preserving the park’s assets. Below are some highlights of the proposed HOCR diagram:

- Event docks can be accessed directly via the stonedust-paved terrace overlooks or hard stepped edge at Dock #4. The proposed High School Rowing dock can be utilized as Dock #3. These designated formal access point will provide more safety for the competitors, as well as protection of the bank from foot traffic.
- The improved event lawns at the Central and East areas propose a high-use soil mix that will be able to better withstand the impact of the event. Specifically the oval lawn in the east area could accommodate additional trailer parking; unlike the current trailer storage in the wood grove east of Herter Center, the storage on the lawn will avoid the tree root zones.

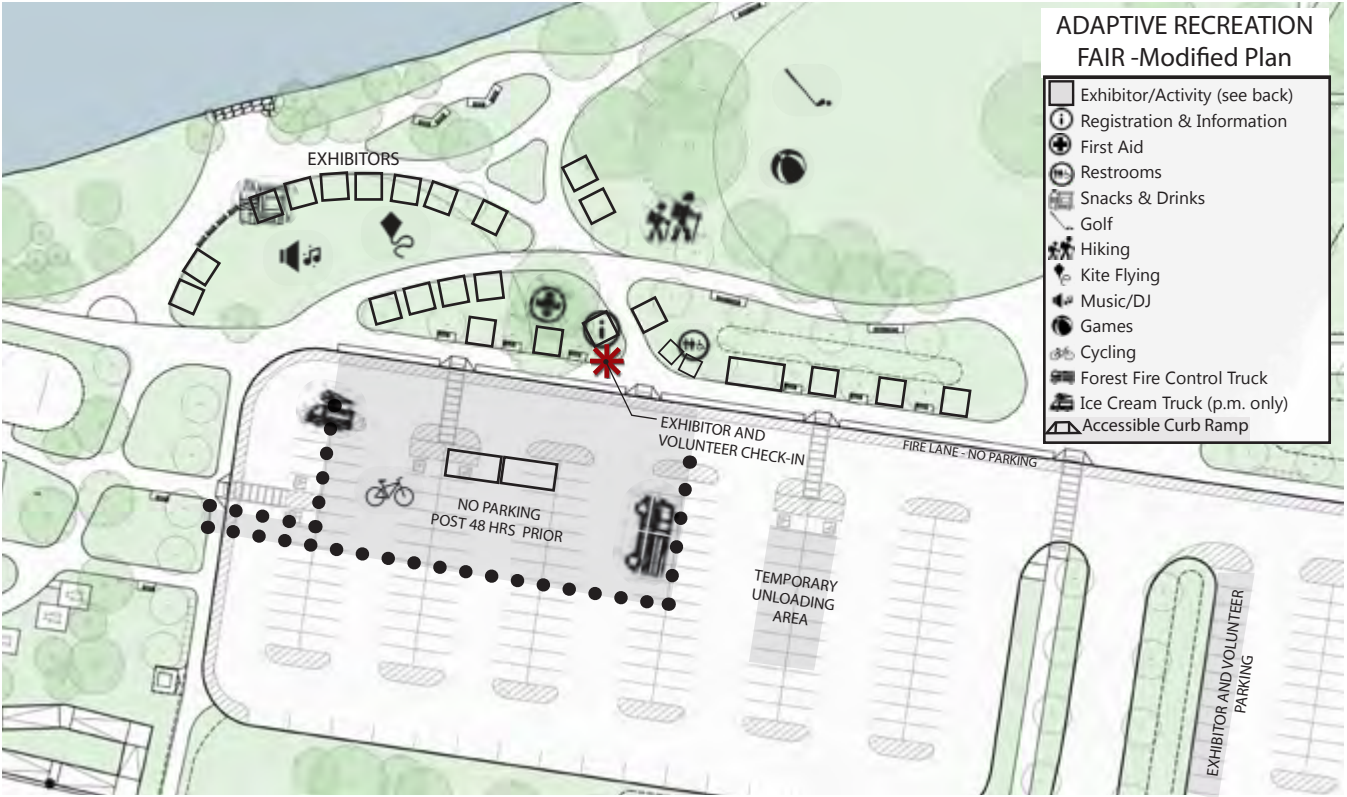
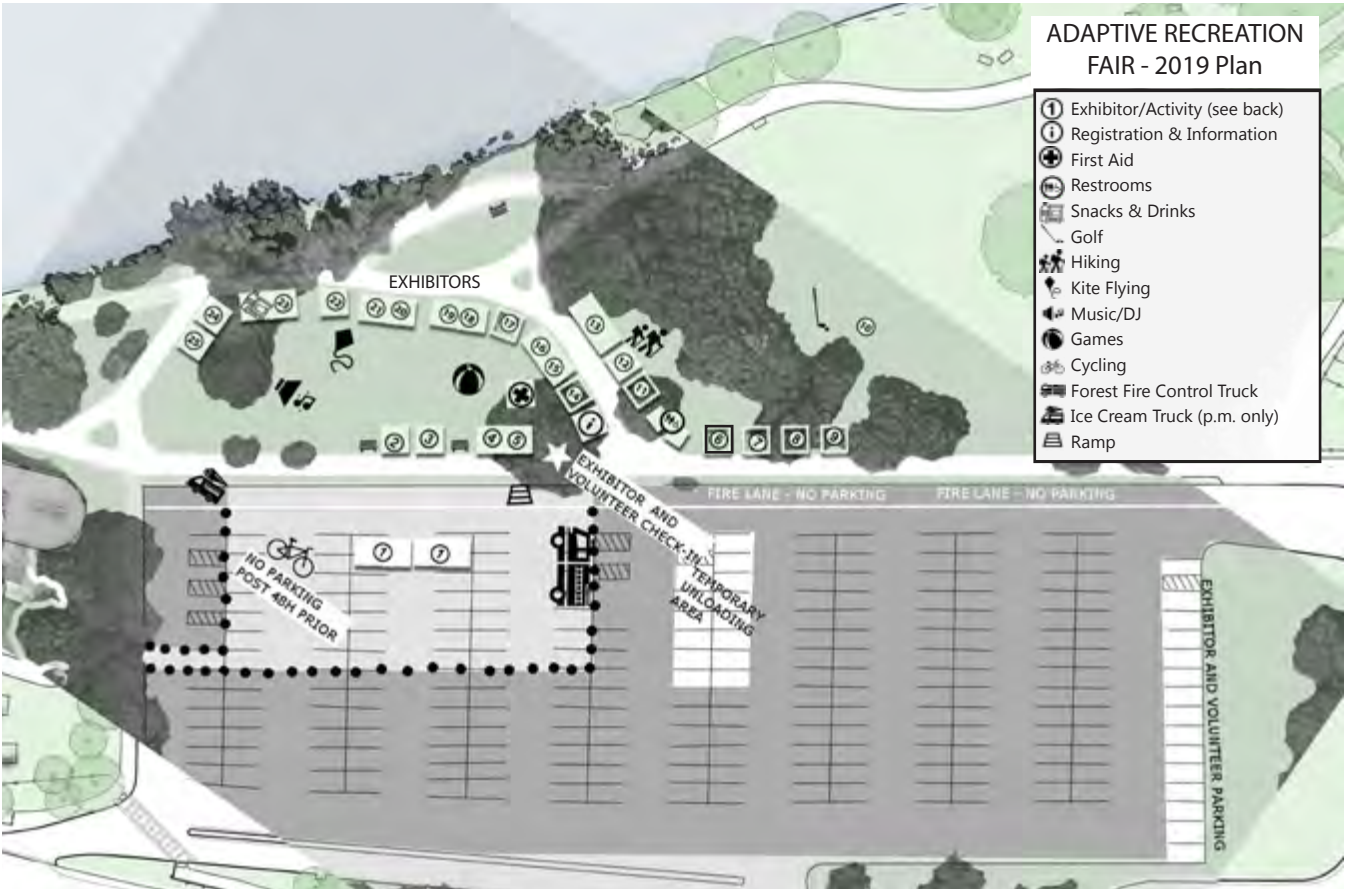


Figure 7. (Top): Adaptive Recreation Fair recent-year event diagram overlaid with an existing conditions map. (Bottom): Modified Adaptive Recreation Fair event diagram with the Master Plan.

- Exhibitors can stay in generally the same areas as before, along the East Lawn path. Vehicular access behind tents can still be accommodated with a required use of ground protection mats.
- The buffer between the East Lawn Path and the river can continue to be utilized for spectator facilities. Because this area has historically been prone to flooding and puddling, the use of elevated event decking and/ ground protection mats will be required.



Figure 8. Damage to lawns from intense event usage can be minimized with the use of ground protection mats for vehicles and roll-out accessible mats (Mobi-Mat) for pedestrians.

- Trailer parking, for 80’-long trucks + rowing boat trailers is concentrated at Artesani Parking Lot. In the proposed condition, the trailer parking will be subdivided in the two parking lot areas. A study of access and egress is shown on the following pages: the main arrival will provide both access and egress, and additionally, two alternative egress paths are proposed, to facilitate quicker emptying of the area. In terms of capacity, the HOCR design plans show 39 trailers, but an aerial image of a recent event shows 59 trailers. The proposed parking can accommodate up to 52 trailers at the same density as the aerial image / existing trailer study.
- Banks of portable toilets are required to stay outside of the river buffer zone. In the proposed diagram they are grouped near the parking lots.

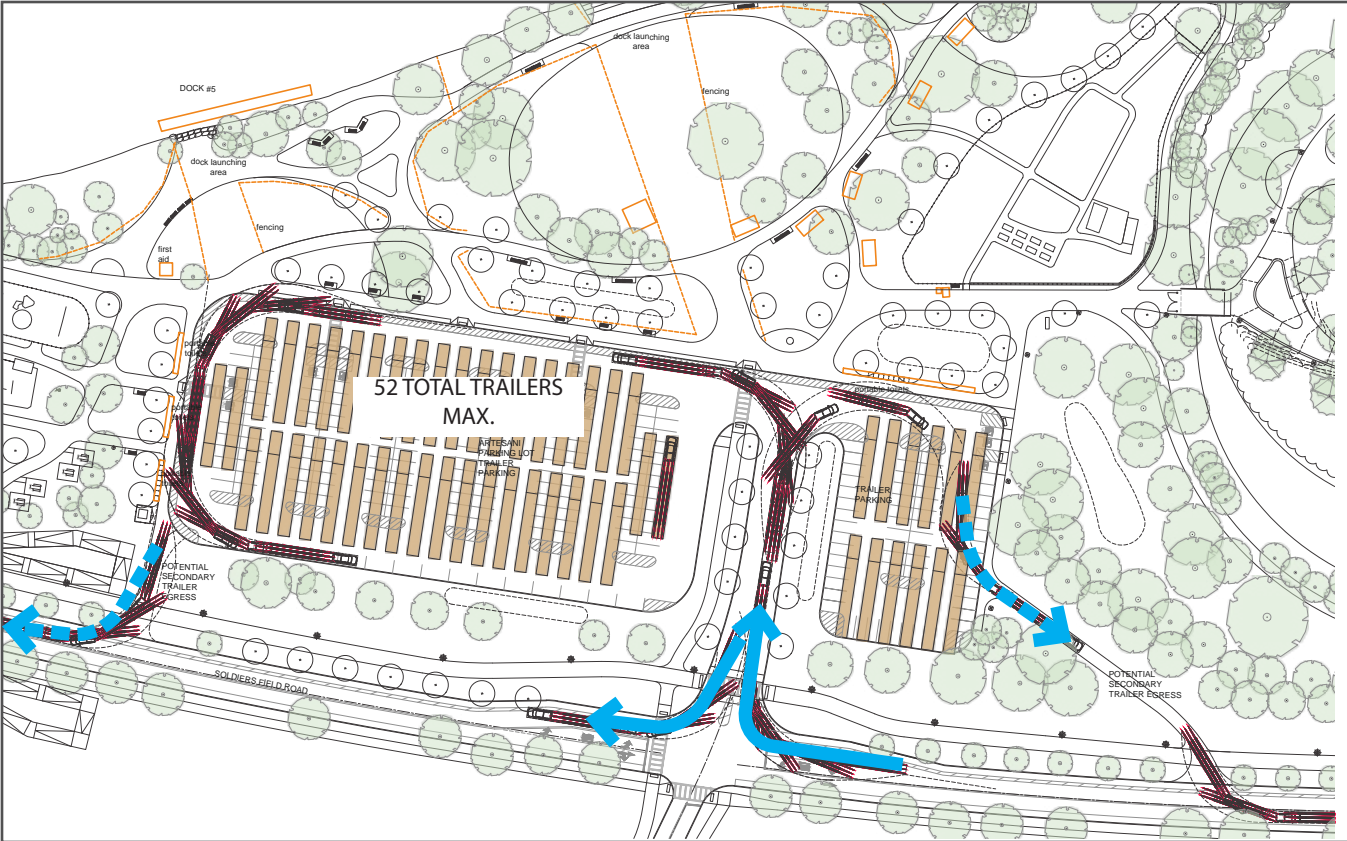
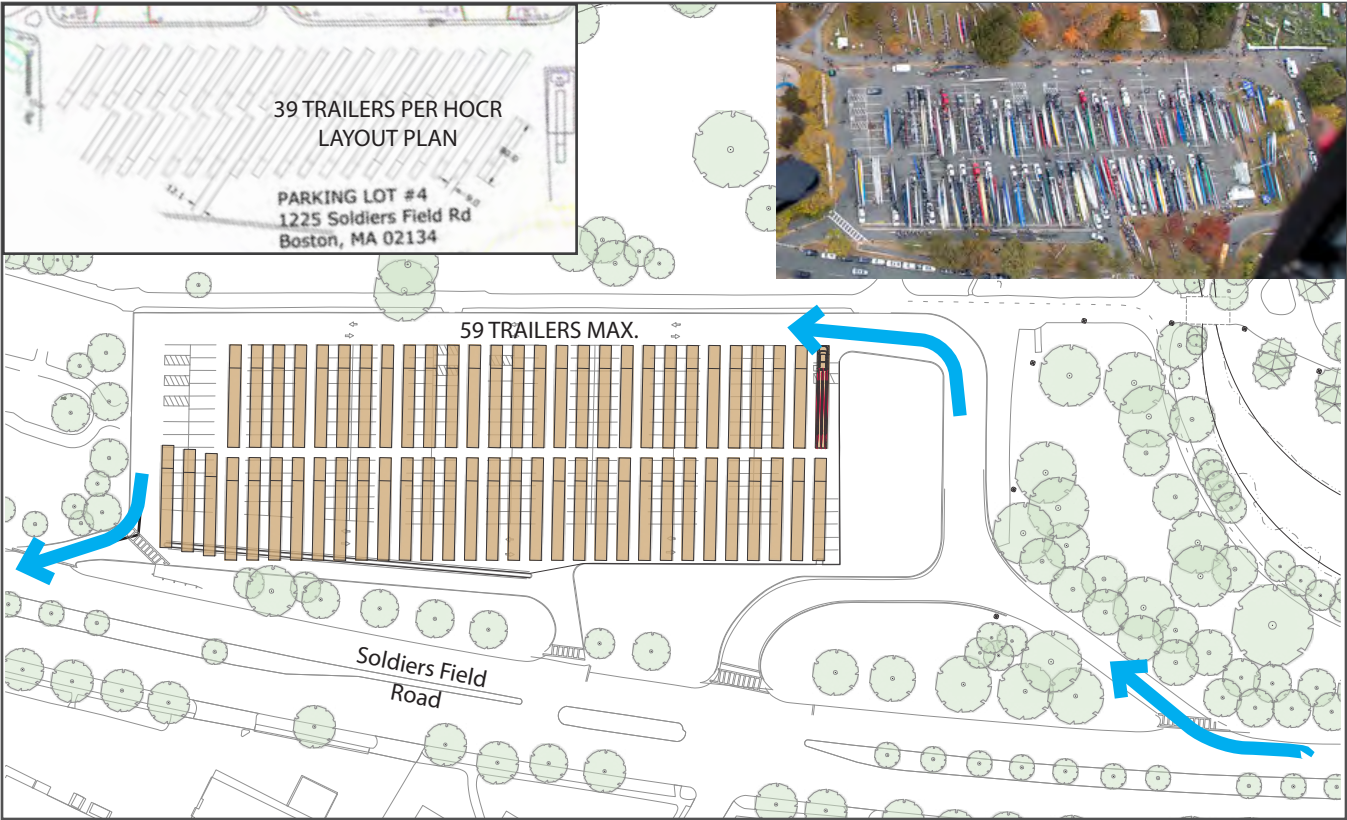


Figure 9. (Top): Existing trailer layout per recent HOCR event (Photo courtesy of HOCR).
(Bottom): Proposed trailer layout with circulation pattern.

HOCR Existing Layout Diagram - West



Figure 10. HOCR Existing Layout Diagram - West, and an aerial photo of a recent event (photo and plan courtesy of HOCR).

HOCR Proposed Layout Diagram - West

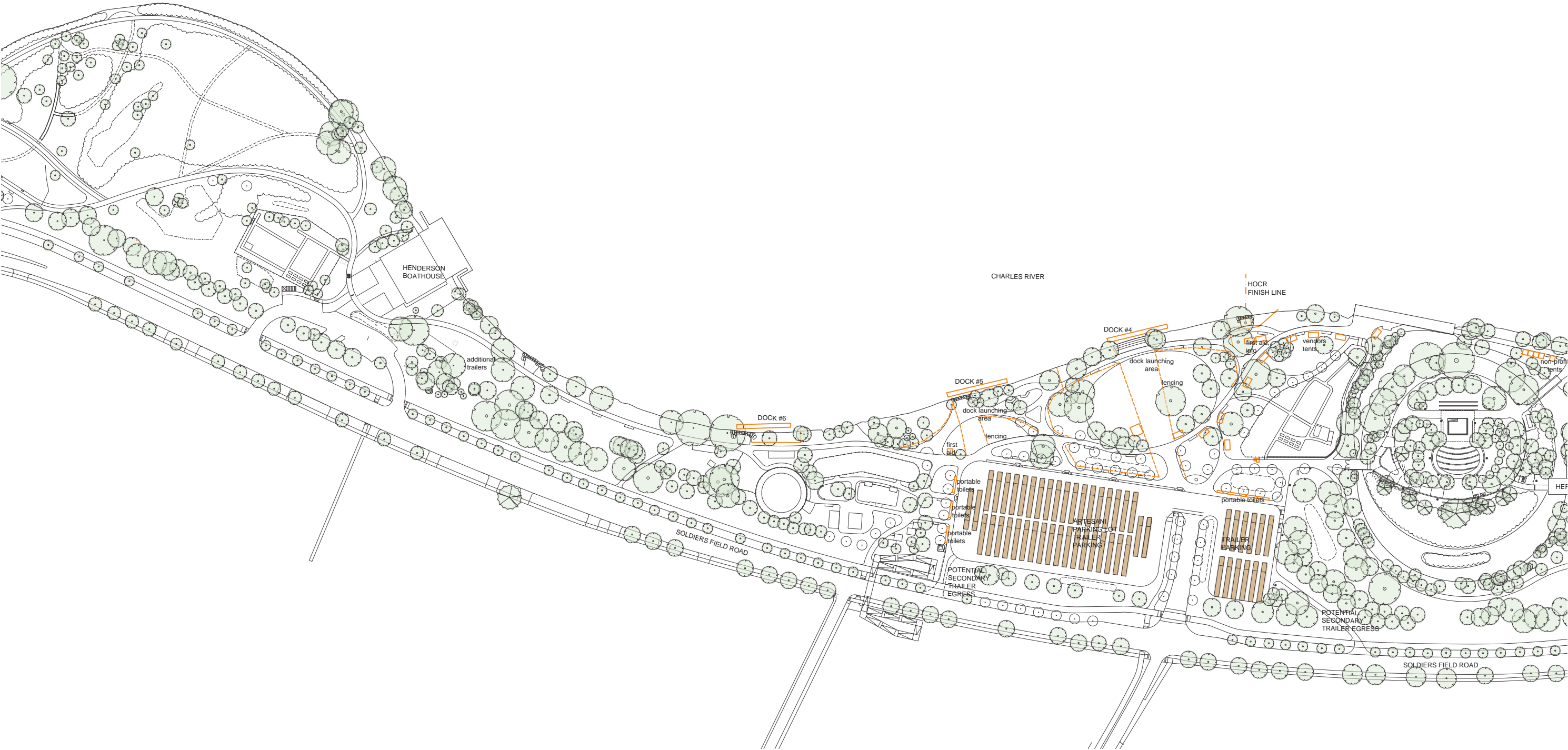


Figure 11. HOCH Proposed Layout Diagram - West

HOCR Existing Layout Diagram - East

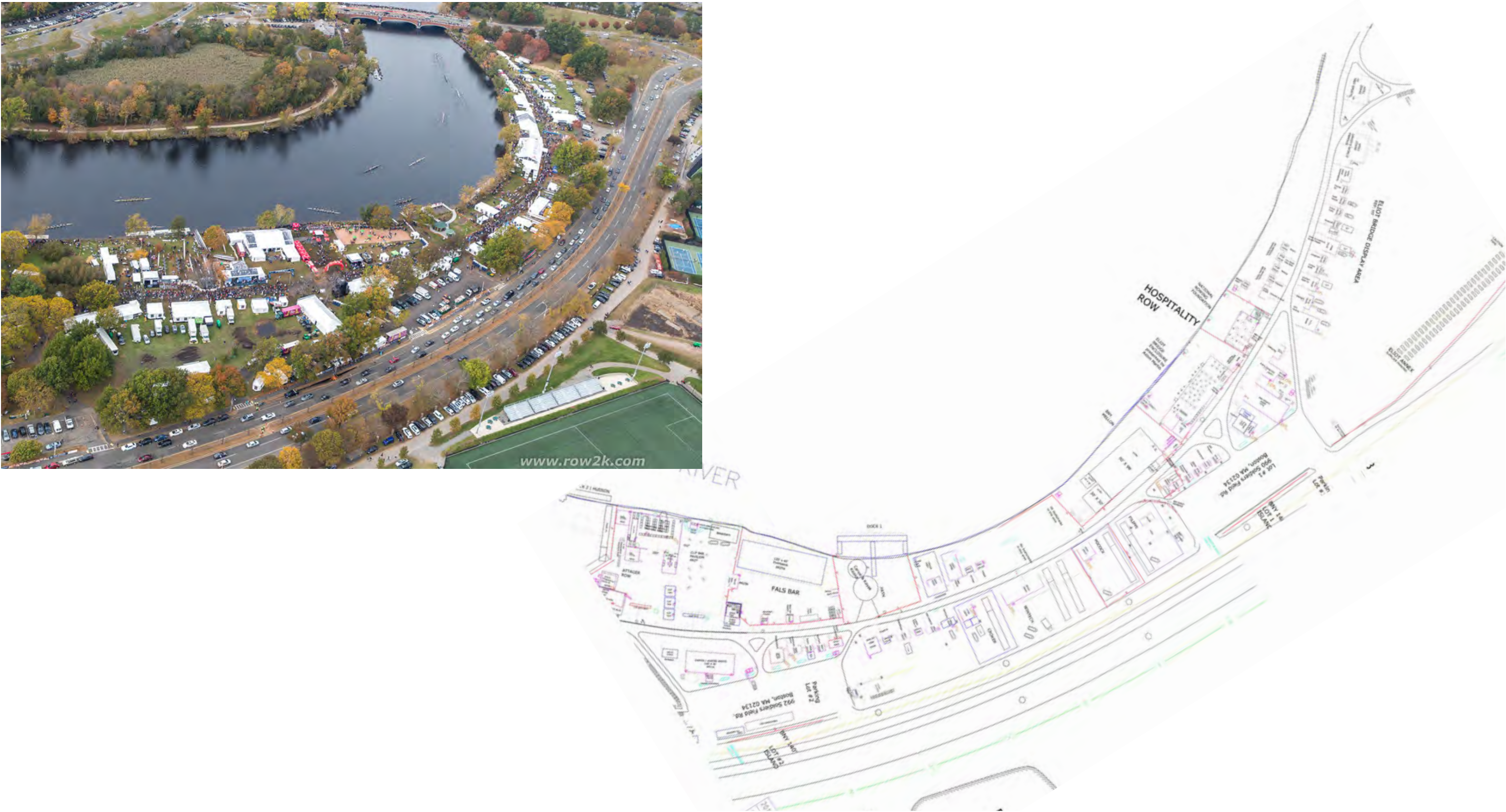


Figure 12. HOCR Existing Layout Diagram - East, and an aerial photo of a recent event (photo and plan courtesy of HOCR).

The diagram is a detailed site plan for the 2019 Boston Regatta, showing the layout of the event area along the Charles River. The plan includes various zones such as 'dock launching area', 'HERTER CENTER', 'HIGH SCHOOL ROWING', 'PARKING LOT #1', 'PARKING LOT #2', and 'PARKING LOT #3'. It also features specific areas for 'vender tents', 'sponsor enclosure', 'bar area', 'event deck', and 'boat vendors'. The plan is oriented with the river at the top and Soldiers Field Road at the bottom. The layout is color-coded with green for trees, orange for event structures, and blue for water. The plan is titled '2019 BOSTON REGATTA' and 'SOLDIERS FIELD ROAD'.

Figure 13. HOCR Proposed Layout Diagram - East