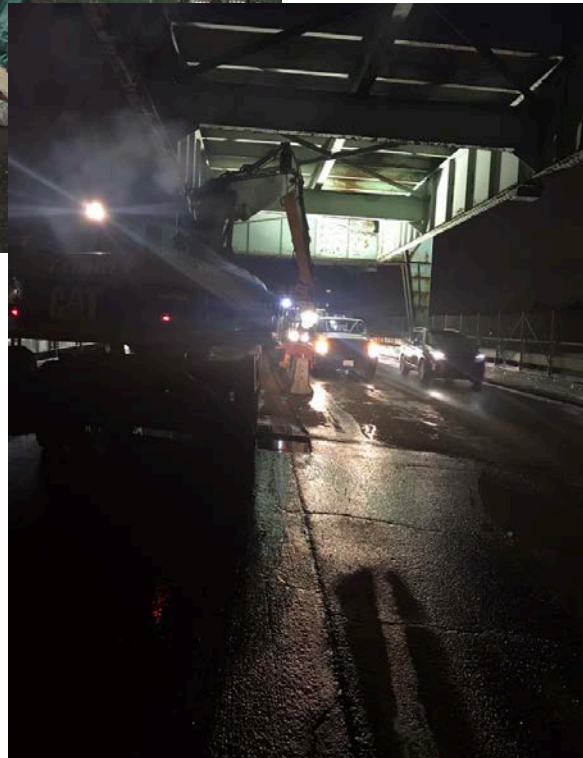


# Highway Administrator's Report

Jonathan L. Gulliver

April 2019

# Tobin Bridge / Chelsea Curves Update



- 1 NB lane closed on April 1<sup>st</sup>
- 1 SB will be closed in early May
- Crews are working 24/7
- To date observations have shown no major travel impacts
- Extensive public outreach campaign

# American Council of Engineering Companies – MA: 2019 Engineering Excellence Awards

- Bronze Award Winners:
  - Silver Line Gateway – Chelsea
  - Washington Street (Route 85) Bridge - Hudson
  - Mass Ave over Comm Ave - Boston

## Silver Award Winners:

- Whittier Bridge – Newburyport/Amesbury
- Longfellow Bridge – Boston / Cambridge
- Bass River Bridge/Cape Cod Rail Trail – Yarmouth/Dennis
- Mount Vernon Street Improvements – Winchester

## American Council of Engineering Companies – MA: 2019 Engineering Excellence Awards



### GRAND CONCEPTOR WINNER

## Fore River Bridge – Weymouth/Quincy





# Spring Cleaning

- All Districts have submitted litter schedules based on priority corridors
- MassDOT, contracted crews, and Massachusetts Correctional crews are active in all 6 Districts



# Spring Cleaning

- Last year we removed 375 tons of litter
  - That is 3.5X as heavy as a blue whale
  - Almost 5X as heavy as a space shuttle
  - Could fill Fenway Park's playing surface 3' high

