

Highway Administrator's Report

Jonathan L. Gulliver

November 18, 2019

MassDOT Transportation Asset Management Plan (TAMP)

- ✓ **Certified by Federal Highway Administration**
- ✓ **Identifies investment strategies through which progress can be made toward long term MassDOT bridge and pavement performance targets**
- ✓ **Recognizes importance of municipal infrastructure to overall system performance**



Boden Lane Bridge - Natick

- Bridge carrying Boden Lane over Railroad in West Natick was struck on October 31st
 - A piece of maintenance equipment struck a fracture critical beam
- Upon inspection it was determined that the bridge built in 1891:
 - Closed to all vehicles and pedestrians
 - Must be demolished



Schedule:

- Total duration approximately 10 weeks
 - Demolition in first three weeks
 - Installation of temporary pedestrian bridge

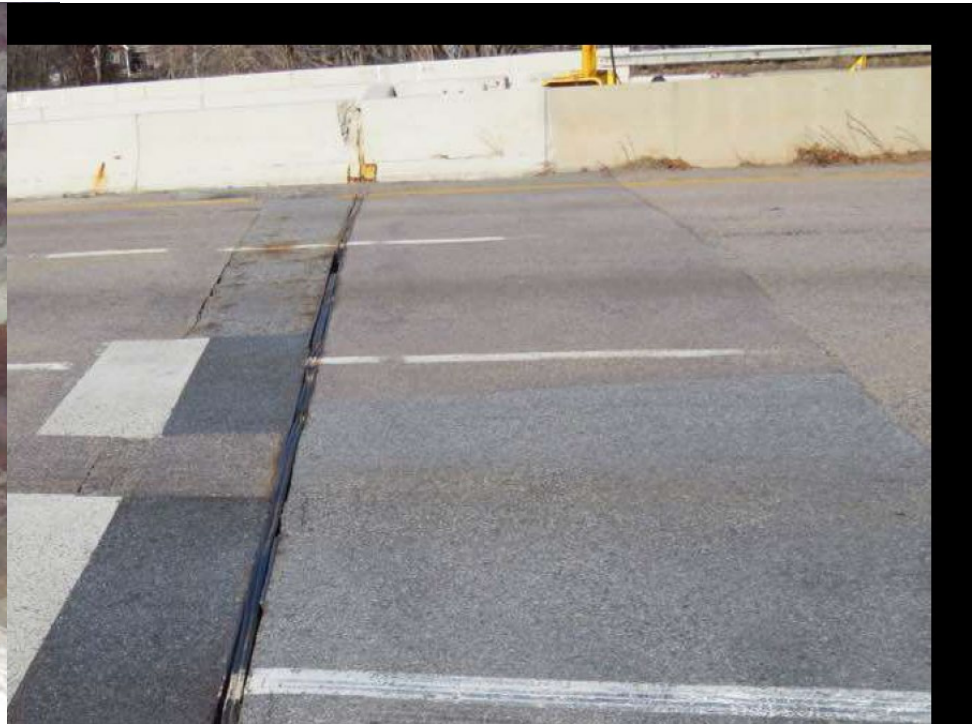
Southborough/Westborough Bridge Bundle Preview



Rehabilitation of 4 bridges (8 structures) on I-90 EB & WB

Over a 3 mile stretch of roadway, Current Estimate is \$54 million

Currently in the preliminary design phase and will advance as a design build project



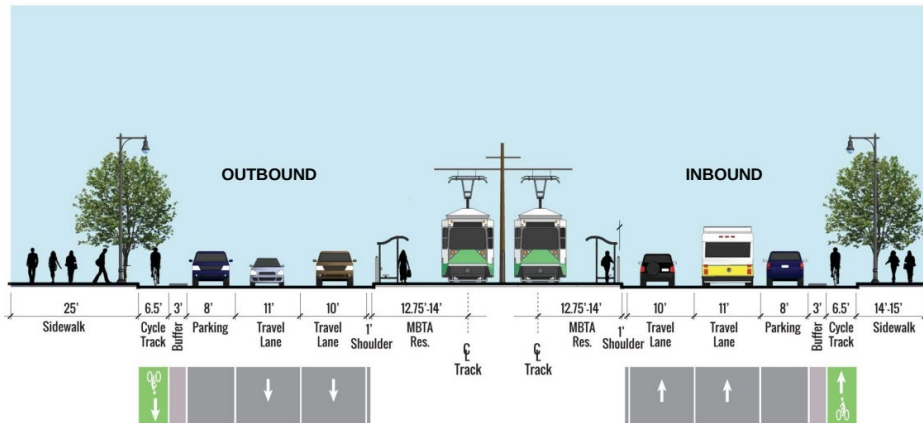
Major Projects at Substantial Completion



Commonwealth Ave – Phase 2A

Added multi-modal accommodations from
BU Bridge to Packard's Corner

- Separated Bike Lanes
- Protected Intersections
- Transit Priority



Casey Arborway

Removed a 1,600' bridge and
reconnected a neighborhood and
Emerald Necklace

- 3 miles of separated bike lanes
- New Orange Line Headhouse
- Planting of over 540 trees



MassDOT Performance Recognition – Highway Division



- Jonathan Soucy – District 4 – Electrician
- Peter Tramontozzi – District 4 Construction – Civil Engineer
- Right of Way Bureau
 - Robert Ball
 - Theresa Kanuse
 - Lisa Szamreta
- Traffic and Safety Engineering Team
 - Kevin Fitzgerald
 - Michelle Deng
 - Chris Falcos
- Highway Operations Center Team
 - John Asquith
 - Adrian Braka
 - Paul Cardigan
 - Mark Cali
 - Shaena Christophe
- Highway Operations Center Team
 - John Mulligan
 - Richard Murphy
 - Brian Noonan
 - Marjorie Pettoruto
 - Gordon Plant
 - Gregory Polin
 - John-Jay Shutt
 - Faton Smrqaku
 - Steven Teixeira
 - William Towlson
 - Joseph Veneto
 - Ronald Vitale
 - Robin Waine
 - Cliff Wong
 - Reed Woodbury
 - Paul McGowan