

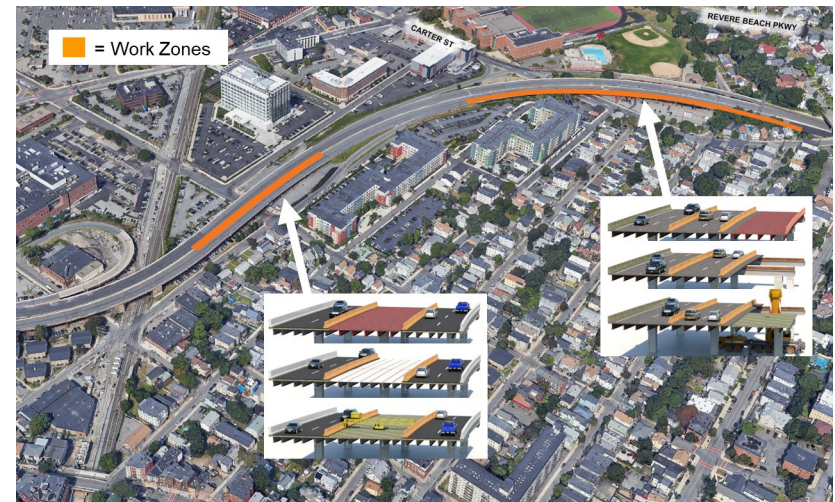
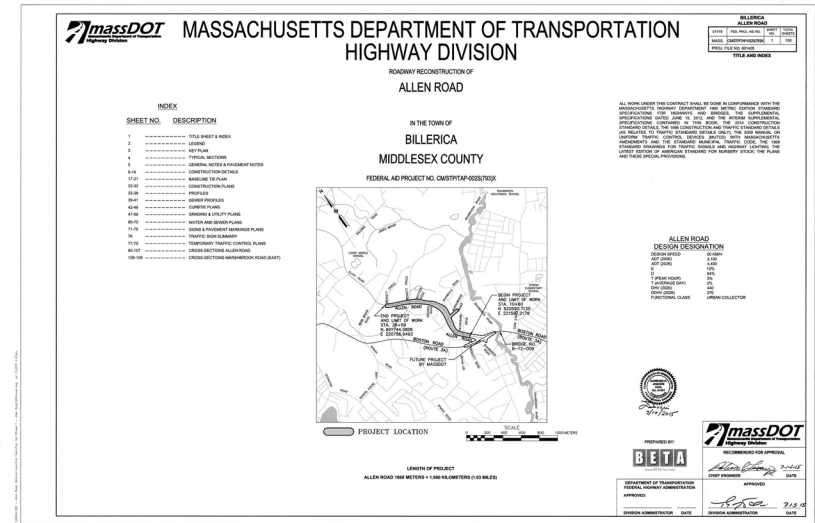
# Highway Administrator's Report

Jonathan L. Gulliver

December, 2019

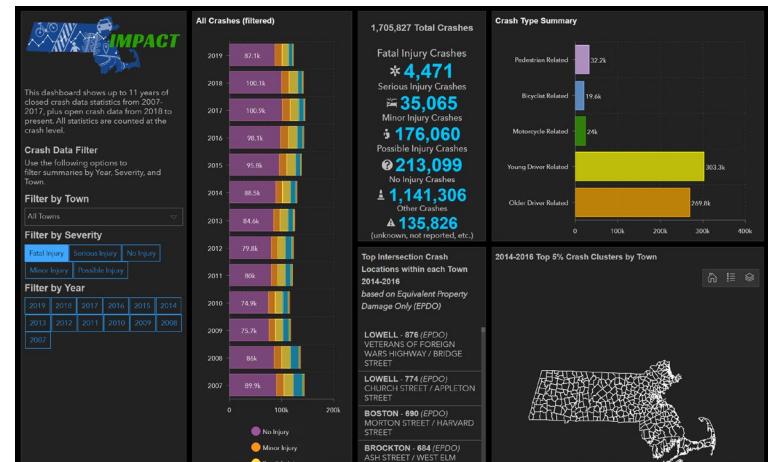
# Highway Highlights 2019

- 196 Construction and Maintenance Contracts received Notice to Proceed in SFY 2019. Totaling over \$1.2 billion
- 563 active construction and maintenance contracts in 238 Massachusetts communities
- Performed work on 571 unique bridge structures in 162 communities



# 2019 Highlights – Operations & Maintenance

- Area of new & reconstructed sidewalks equivalent to a 5' wide path from Springfield to Worcester (approx 54 miles)
- Pavement resurfacing performed in over 100 Massachusetts communities, equivalent to a two-lane road from Provincetown to Pittsfield (approx 257 miles)
- Modernized Traffic signals for improved safety and traffic flow at 175 locations in 149 Communities
- 8,625 incidents reported to HOC requiring immediate action
- Released the Crash Data Portal



## 2019 Highlights – Projects & Construction

- 226 Project advertised with a combined estimated contract value of \$822 million - including 94.5 % of the planned Federal Aid Program for 2019
- Over 52,000 construction inspection reports filed by MassDOT District Construction Staff and documenting quality and safety on Highway Projects





# Fore River & Woods Memorial Bridges

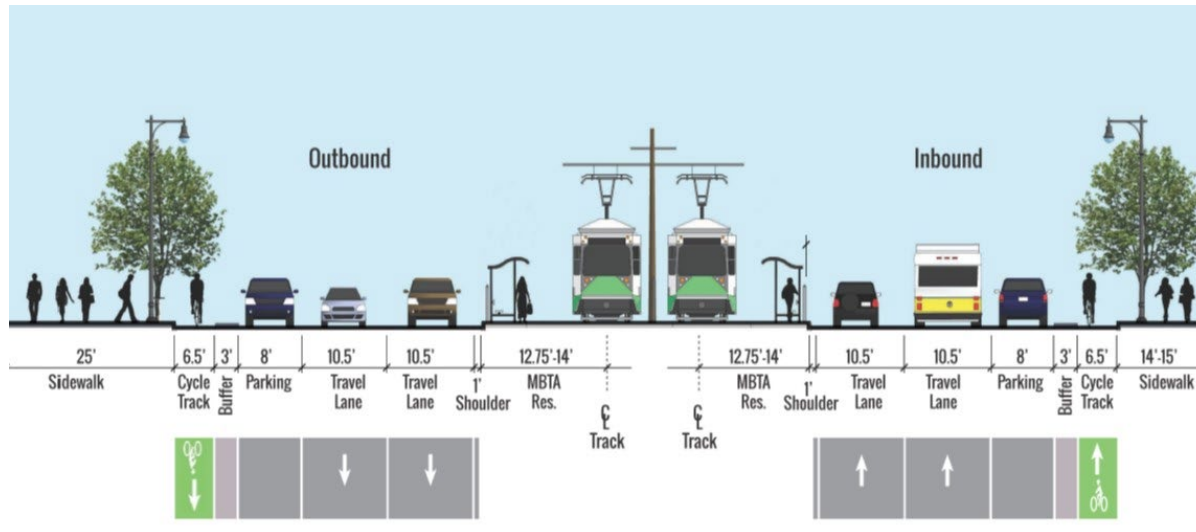
Fore River Bridge – Quincy / Weymouth



Woods Memorial Bridge – Everett/Medford

# Comm Ave 2A & I-95 Bridge, Attleboro

Commonwealth Ave – Phase 2A



I-95 NB & SB – Attleboro



# Casey Arborway



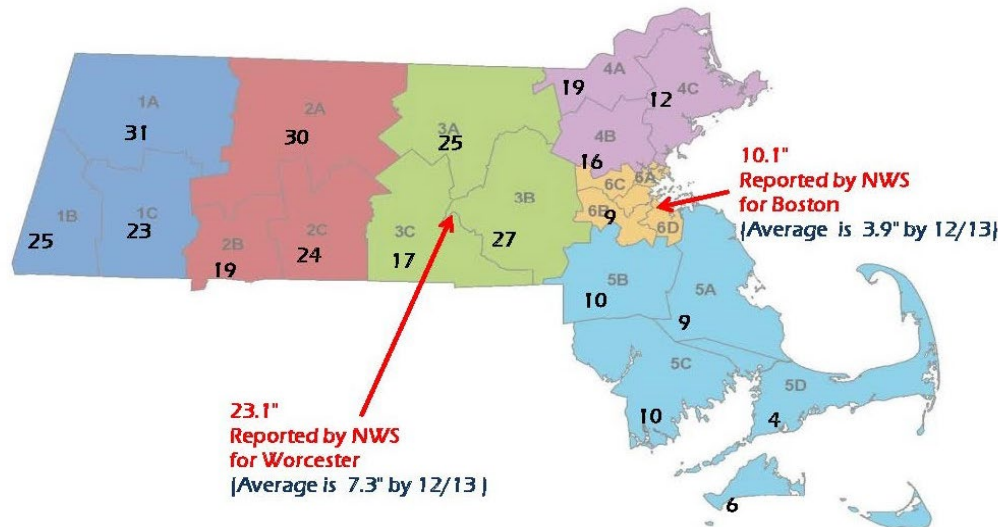
Before

After





# Snow & Ice Update



- 4 statewide events
- 100K tons of salt
- 425K gal of liquid de-icer
- Worked over 55,000 person-hours

Category	Budget	Actual YTD Expenditures	In Process (SIMS)	Budget Remaining
<b>1-Hired Equipment</b>	<b>\$18,682,500</b>	<b>\$656,657</b>	<b>\$18,279,735</b>	<b>(\$253,892)</b>
State Funded	\$18,682,500	\$656,657	\$18,279,735	(\$253,892)
<b>2-Snow &amp; Ice Control Materials</b>	<b>\$32,800,000</b>	<b>\$4,991,730</b>		<b>\$27,808,270</b>
State Funded	\$28,000,000	\$4,640,469		\$23,359,531
Toll Funded	\$4,800,000	\$351,261		\$4,448,739
<b>3-Equipment, Repairs &amp; Accessories</b>	<b>\$1,237,500</b>	<b>\$525,850</b>		<b>\$711,650</b>
State Funded	\$1,187,500	\$525,850		\$661,650
Toll Funded	\$50,000	(\$1)		\$50,001
<b>4-Overtime Salary Costs</b>	<b>\$9,945,089</b>	<b>\$2,376,846</b>		<b>\$7,568,243</b>
State Funded	\$6,971,289	\$1,719,449		\$5,251,840
Toll Funded	\$2,973,801	\$657,397		\$2,316,404
<b>5-Operational Services</b>	<b>\$130,000</b>	<b>\$0</b>		<b>\$130,000</b>
State Funded	\$130,000	\$0		\$130,000



# Upcoming Winter Weather

## Expected Snowfall - Official NWS Forecast Valid: Overnight Through Tuesday

