

# Highway Administrator's Report

Jonathan Gulliver  
December 11, 2017

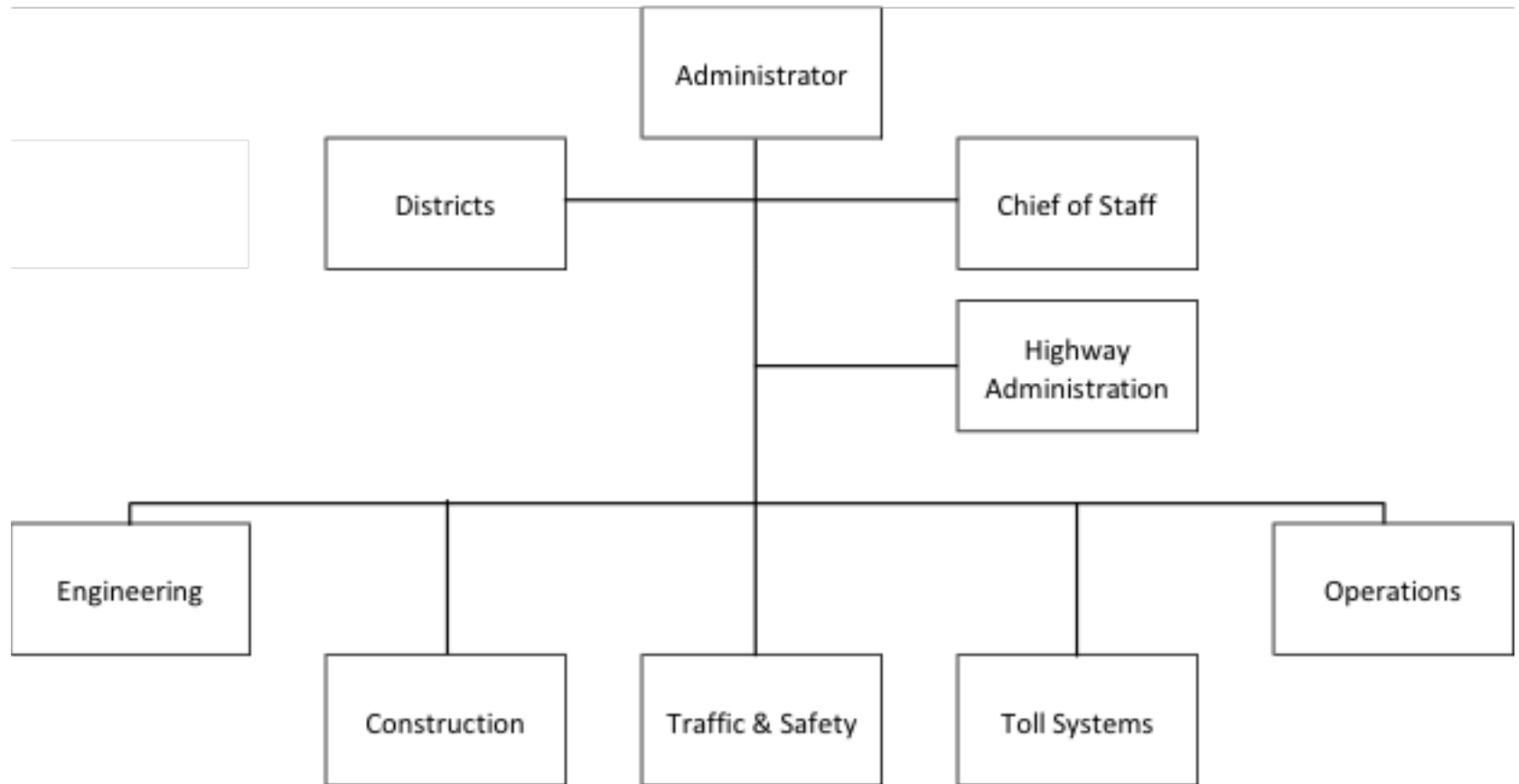
# Snow and Ice Season 2017-2018



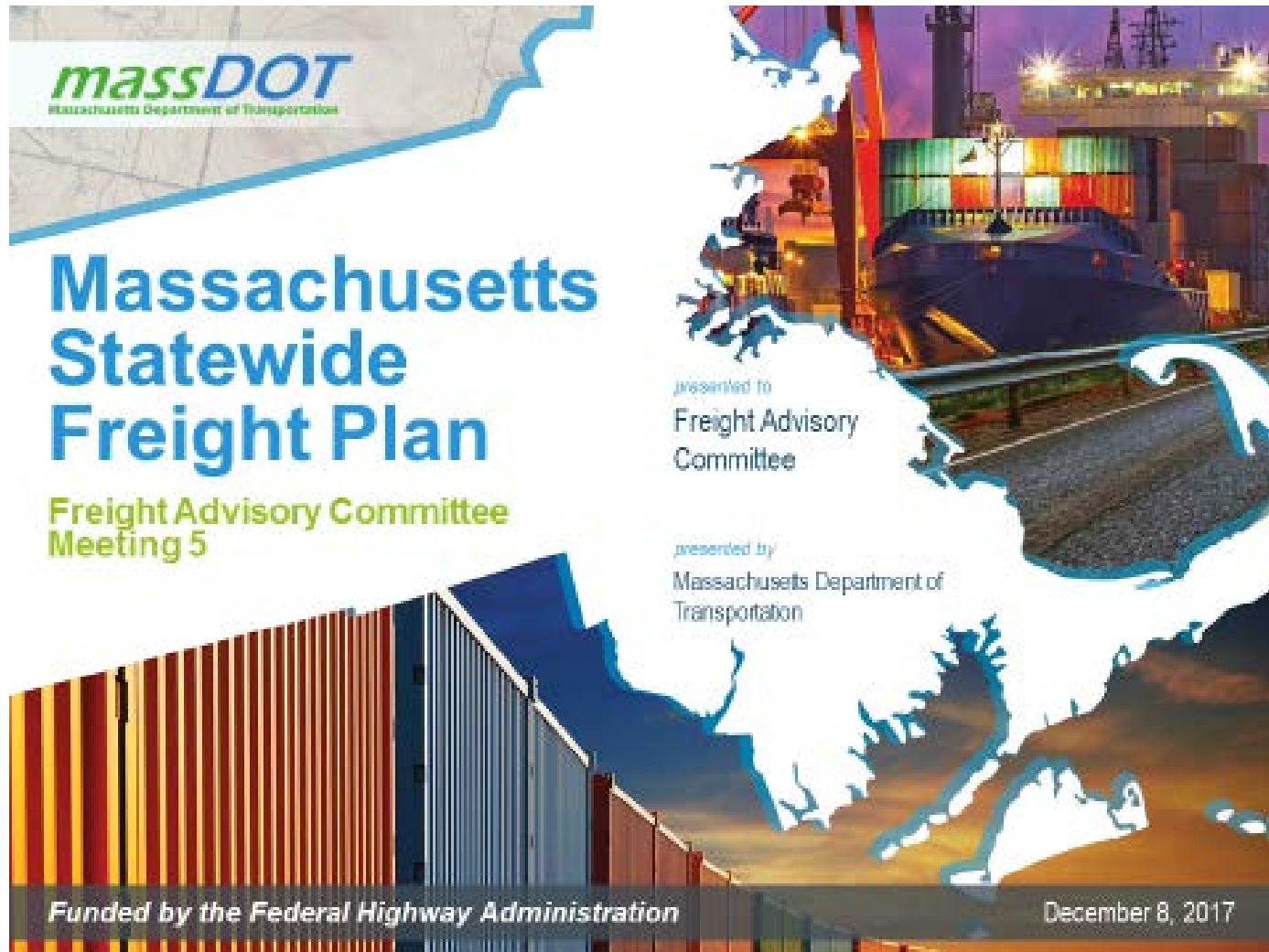
Available Equipment Breakdown			
Equipment Type	Total	Hired	State
Combo (Plow and Spreader)	1330	1100	230
Plows	2120	2000	120
Front End Loaders	460	360	100
Misc equipment (Tankers, Snowblowers)	285	250	35
Snow Melters	3	0	3
<b>Totals</b>	<b>4198</b>	<b>3710</b>	<b>488</b>

MassDOT Highway Materials Summary			
	Salt (Tons)	MgCL (Gallons)	Blended Brine (Gallons)
Capacity	370,000	920,000	140,000
Current	335,000	750,000	100,00

# Highway Reorganization



# Freight Advisory Group Meeting



**massDOT**  
Massachusetts Department of Transportation

## Massachusetts Statewide Freight Plan

Freight Advisory Committee  
Meeting 5

presented to  
Freight Advisory  
Committee

presented by  
Massachusetts Department of  
Transportation

*Funded by the Federal Highway Administration*

December 8, 2017

## S2217 An Act Promoting Construction Zone Safety

- Hearing on Wednesday, December 6<sup>th</sup>
- Allows MA State Police to enforce variable speed limits in work zones

