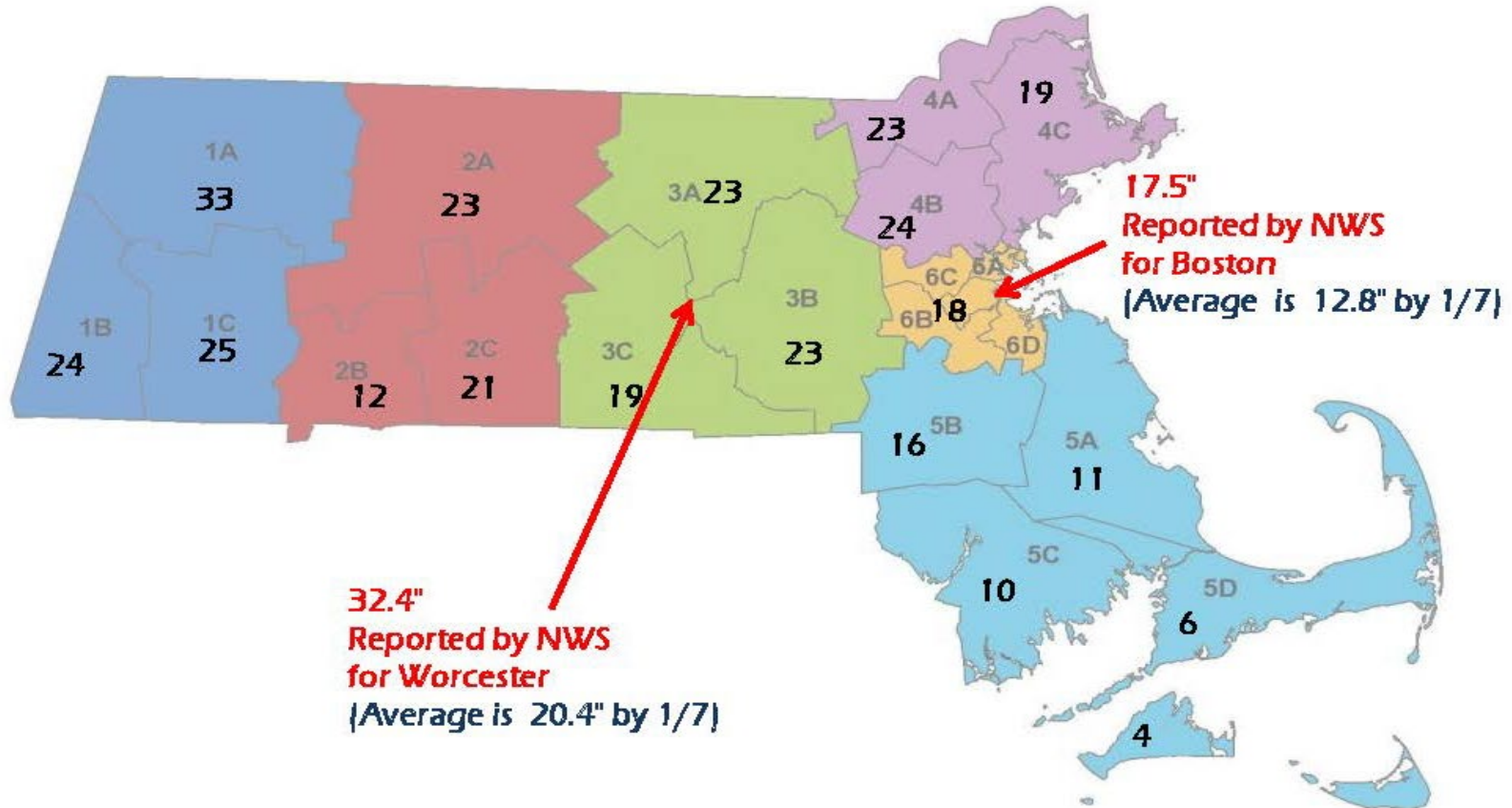


# Highway Administrator's Report

Jonathan L. Gulliver  
January 2021

# Snow & Ice Update

FY21 Snow Fall Amounts by District Sub-Areas (inches) of 1/7/2021  
Amounts are area averages reported by MassDOT personnel at depots throughout the season.



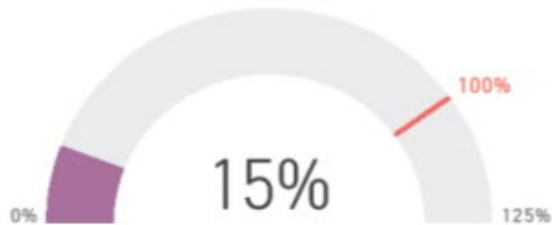
# S&I Budget Update

Total Annual Budget  
\$97,742,197

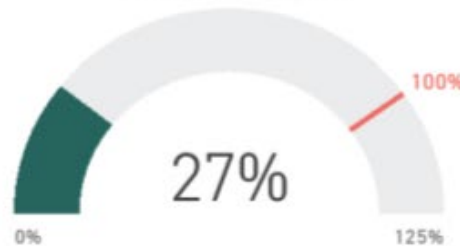
Total YTD Expenditures  
25,140,358

Budget Remaining  
\$72,601,839

Toll Funds Spent



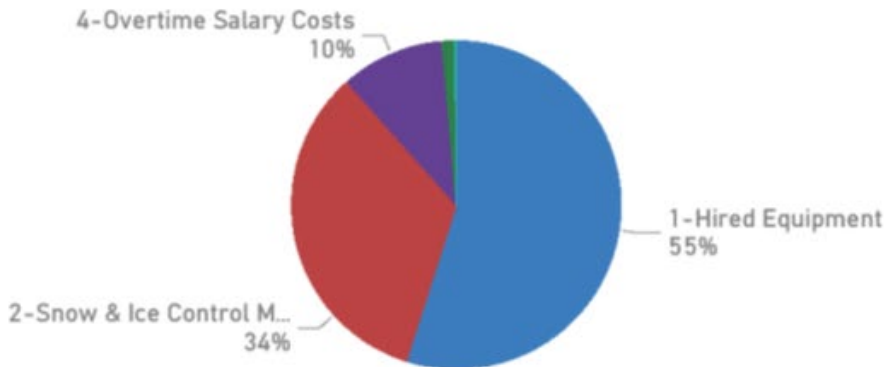
State Funds Spent



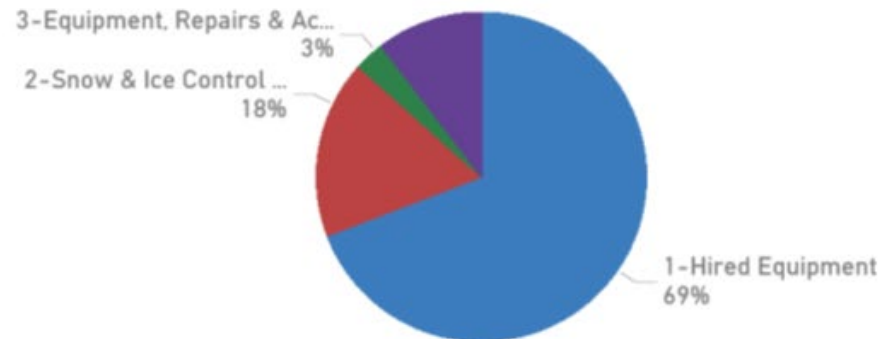
Expenditures from SIMS

\$17,388,213  
Equipment Cost

Budget Distribution



Expenditure Distribution



"This report is real time data. It consists of expenditure transactions entered and accepted into the accounting system (MMARS) as well as incurred Hired Equipment expenses that are not reflected in MMARS due to timing."

# Snow & Ice Update

## Snow & Ice Staff and Equipment

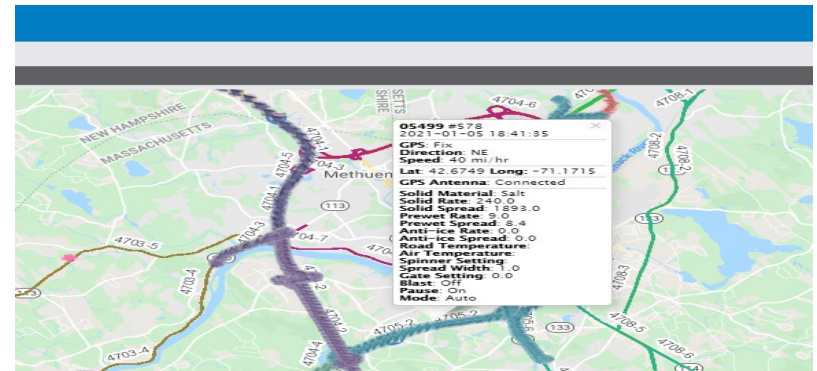
- 850 MassDOT employees (includes seasonal support staff and temporary S&I drivers)

### Snow and Ice Control Equipment

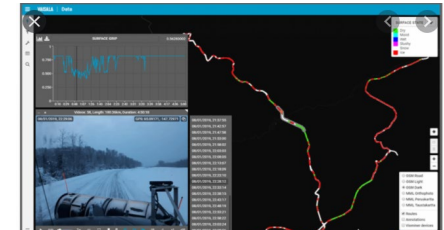
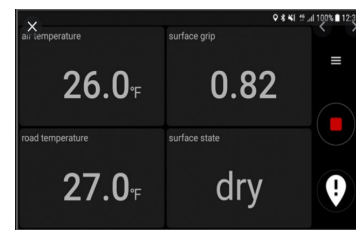
Equipment Type	Hired	State	Total
Front End Loaders	316	136	452
Combos (Spreaders with Plows)	1,263	256	1,519
Plows	1,629	142	1,771
Tow-Plows	0	19	19
Tankers	47	3	50
Other	216	20	236
<b>Totals</b>	<b>3,471</b>	<b>576</b>	<b>4,047</b>

## Snow & Ice Technologies

- GPS devices on all hired combos.



- 25 new Mobile Road Weather Information Sensors for District Area Supervisors.
  - Monitors road and air temperature, relative humidity, dew/frost point, surface condition and most importantly, grip.



# Exit Renumbering Construction Update

## Work Completed to date:

- Route 140
- Interstate 195
- Route 25
- Route 3
- Route 6



## Upcoming work:

- I-90 (MA Turnpike) – West of I-95 complete
- Interstate 295
- Route 24

*All work is weather dependent and start dates may be adjusted accordingly.*

[www.newmassexits.com](http://www.newmassexits.com)

Project/Schedule Updates  
Interactive Map



# Chapter 90 Program



- Chapter 90 entitles cities and towns to reimbursements on eligible projects
- Apportionments are determined based on a formula of lane miles, population, and employment
- Eligible project elements include things such as:
  - Highway construction, preservation and improvement projects
  - Pedestrian and bicycle facilities
  - Road building machinery, equipment and tools
- Program updates are underway:
  - Integration into MaPIT
  - Development of new resource documents

# Municipal Small Bridge Program

- This five-year, \$50M program provided cities and towns with financial support for small bridge replacement, preservation, and rehabilitation projects
  - These small bridges are not eligible for federal aid under existing programs
- Each municipality qualifies for up to \$500,000 per year
  - Any overages are the responsibility of the municipality

Round	Grants Awarded	Total Funding Awarded
1	33	\$16.5M
2	11	\$4.8M
3/4/5	41	\$19.6
6/7	27	\$6.45M
Emergency	5	\$2.5M
<b>Grand Total</b>	<b>117</b>	<b>\$49.9M</b>



# Small Bridge Program Funding Distribution

