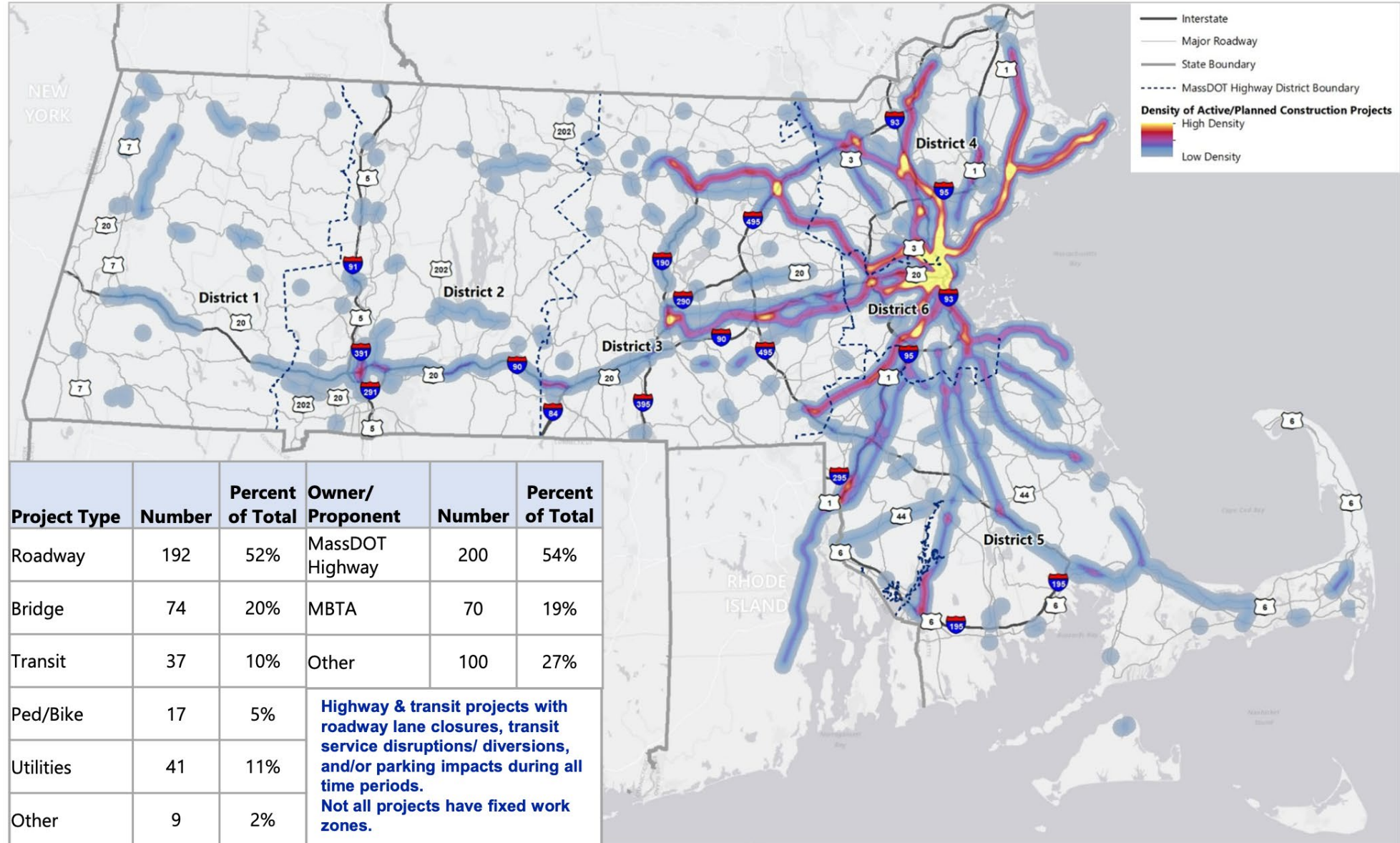


Highway Administrator's Report

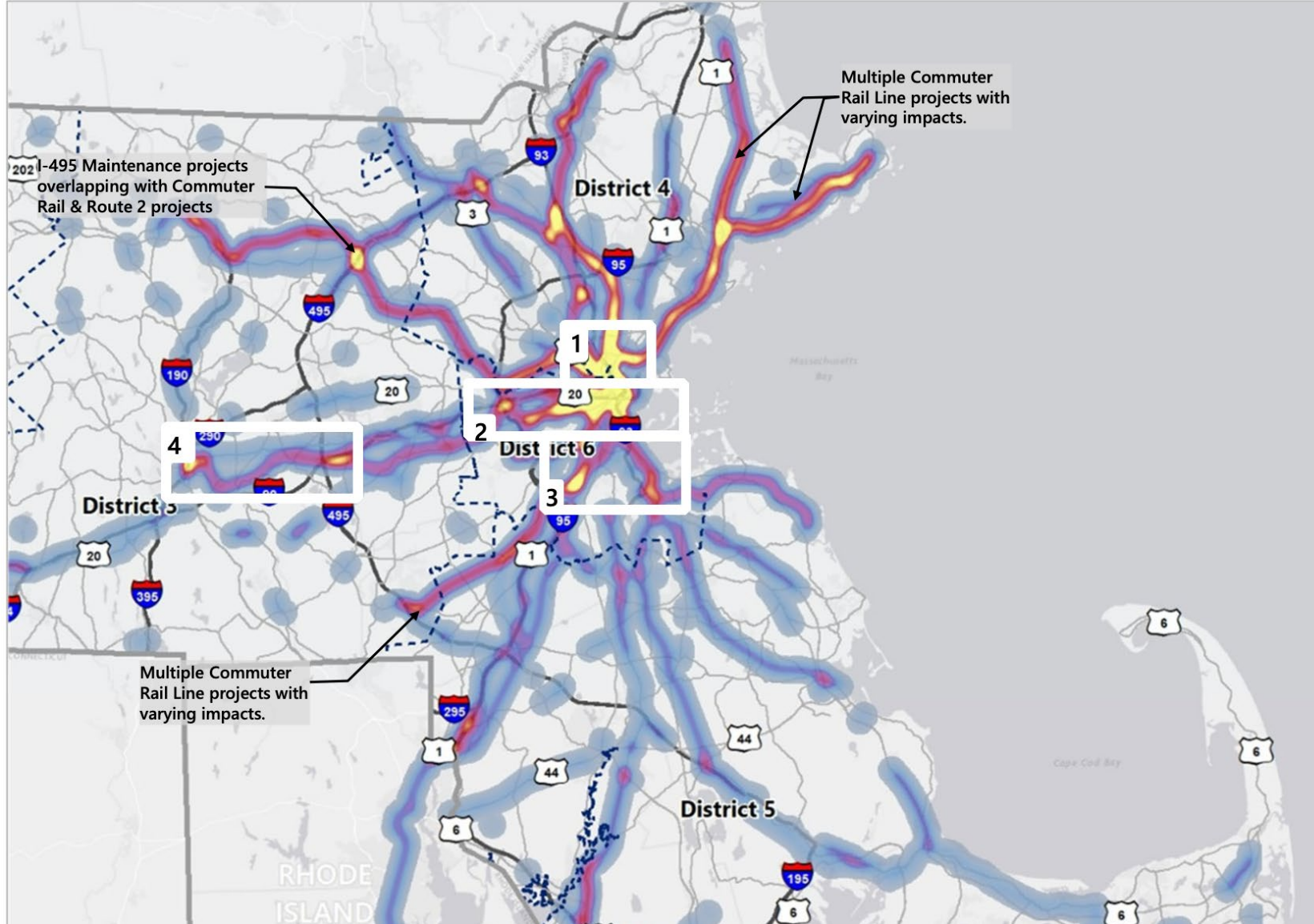
Jonathan L. Gulliver

March 2021

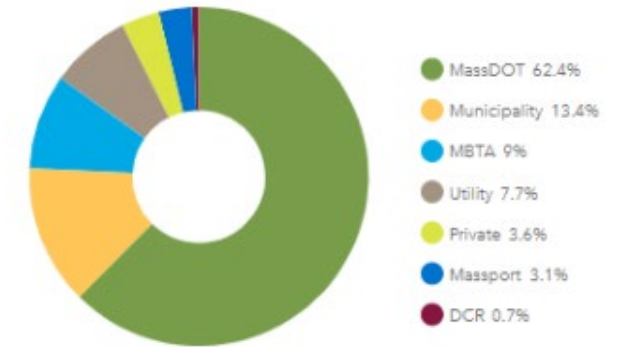
2021 Construction Season



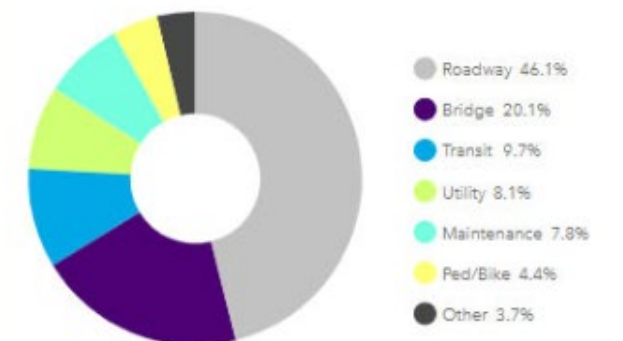
2021 Construction Season



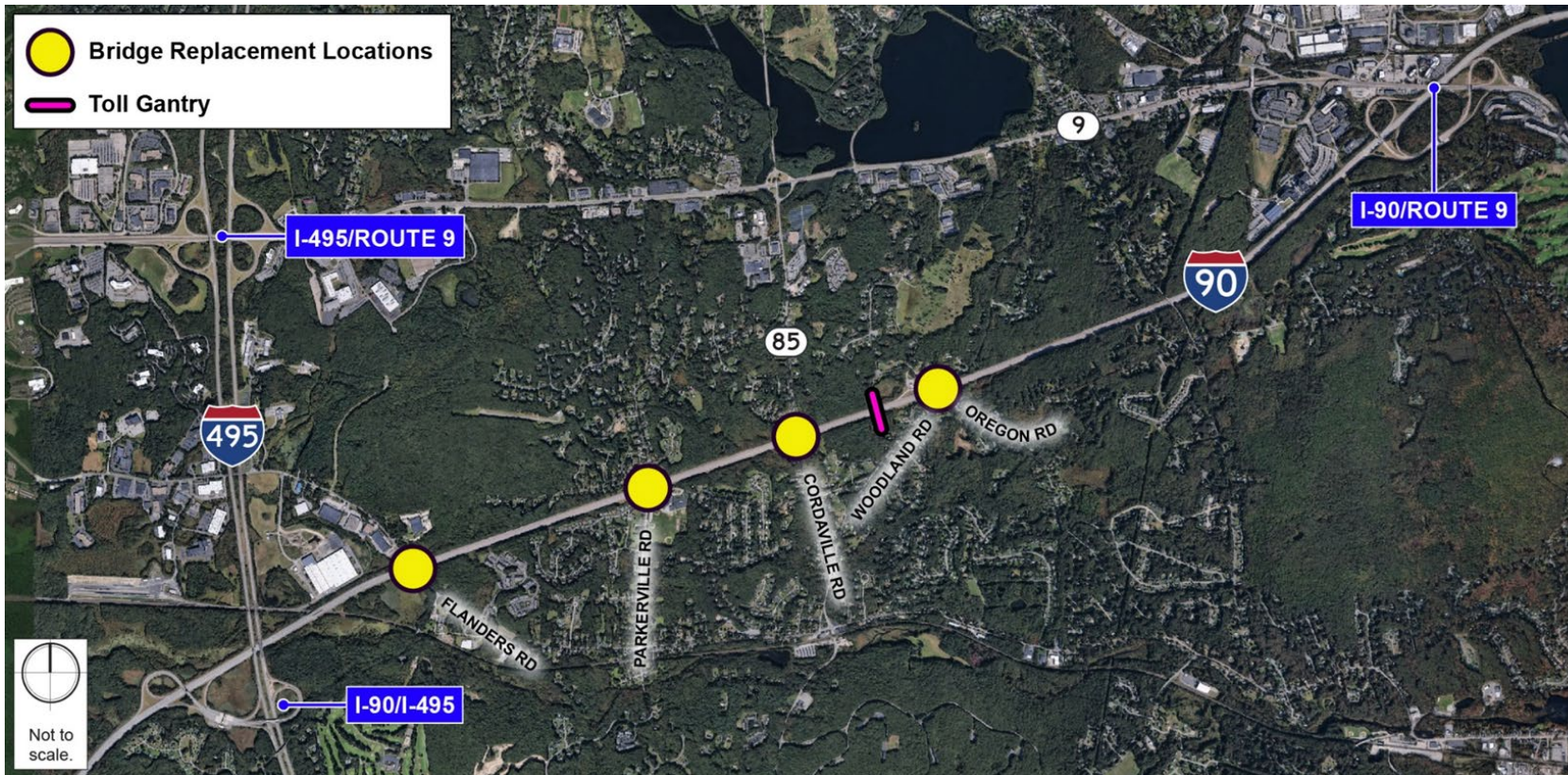
Project Owner



Types of Projects



Acceller-8 Southboro/Westboro project



- Replaces 8 bridges in 4 locations on Turnpike over 8 weekends.
- Utilizes crossovers and rapid replacement construction techniques

Acceller-8 Southboro/Westboro project

Estimated Start Dates and Durations:

- November 2020 – Flanders Rd. Utility Relocation
- January 2021 – May 2021 – I-90 Median Barrier Replacement
- January 2021 – July 2021 Bridge Abutment Repairs
- March 2021 – April 2021 – Median Crossover Construction
- May 2021 – Movable Barrier Trial Run
- June 2021 – August 2021 – Bridge Replacements
- August 2021 – October 2021 – I-90 Median Barrier Replacement
- July 2021 – November 2021 – Final Paving

US Army Corp Maintenance on Canal Bridges



- Both canal bridges are under the jurisdiction of the the USACOE, not MassDOT
- Army Corps performing work beginning on April 12th and is anticipated to wrap up before Memorial Day
- Work includes steel repairs to light posts, fence repairs, replacement of conduits and cables.

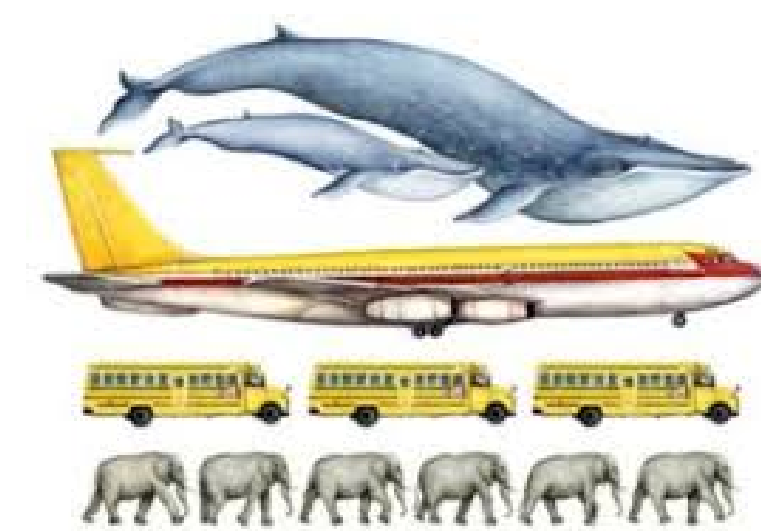
US Army Corp Maintenance on Canal Bridges



- 24/7 reduction from 2 lanes in each direction to one 12-foot lane in each direction
- Signs, traffic control devices, and police details will be used at all times
- MassDOT will installed temporary signals at Route 6 Ramp to better manage traffic flow
- Bourne Bridge Schedule for Fall

Spring Cleaning

- On average MassDOT removes about 375 tons of litter from Massachusetts Highways
 - That is 3.5X as heavy as a blue whale
 - Almost 5X as heavy as a space shuttle
 - Could fill Polar Park's playing surface 3' high



Polar Park and Kelley Square



- Kelley Square reconfigured with an innovative peanut design that will serve as the gateway to the new Polar Park in Worcester

