

Highway Administrator's Report

Jonathan L. Gulliver

July 2021

I-93 Bridge Strike at Roosevelt Circle



I-93 Bridge Strike at Roosevelt Circle

- On 7/19 an over-height truck hauling an industrial clarifier struck the Roosevelt Circle bridge over I-93 SB in Medford
 - Load exceeded the height on the permit application
 - Lacked the mandatory guide vehicles
 - Deviated from the approved route for over-height vehicle

Temporary Repairs:

- Removed heavily damaged fascia beam
- Removed approx. 10' x 75' of bridge deck

Traffic Impacts:

- I-93SB was restored to full capacity on 7/22
- Roosevelt Circle was restored to full capacity, with narrower lanes on 7/23

Permanent repairs

- In design and will take several months



I-93 Bridge Strike at Roosevelt Circle

- On 7/19 an over-height truck hauling an industrial clarifier struck the Roosevelt Circle bridge over I-93 SB in Medford
 - Load exceeded the height on the permit application
 - Lacked the mandatory guide vehicles
 - Deviated from the approved route for over-height vehicle

Temporary Repairs:

- Removed heavily damaged fascia beam
- Removed approx. 10' x 75' of bridge deck

Traffic Impacts:

- I-93SB was restored to full capacity on 7/22
- Roosevelt Circle was restored to full capacity, with narrower lanes on 7/23

Permanent repairs

- In design and will take several months



I-93 Bridge Strike at Roosevelt Circle

- On 7/19 an over-height truck hauling an industrial clarifier struck the Roosevelt Circle bridge over I-93 SB in Medford
 - Load exceeded the height on the permit application
 - Lacked the mandatory guide vehicles
 - Deviated from the approved route for over-height vehicle

Temporary Repairs:

- Removed heavily damaged fascia beam
- Removed approx. 10' x 75' of bridge deck

Traffic Impacts:

- I-93SB was restored to full capacity on 7/22
- Roosevelt Circle was restored to full capacity, with narrower lanes on 7/23

Permanent repairs

- In design and will take several months



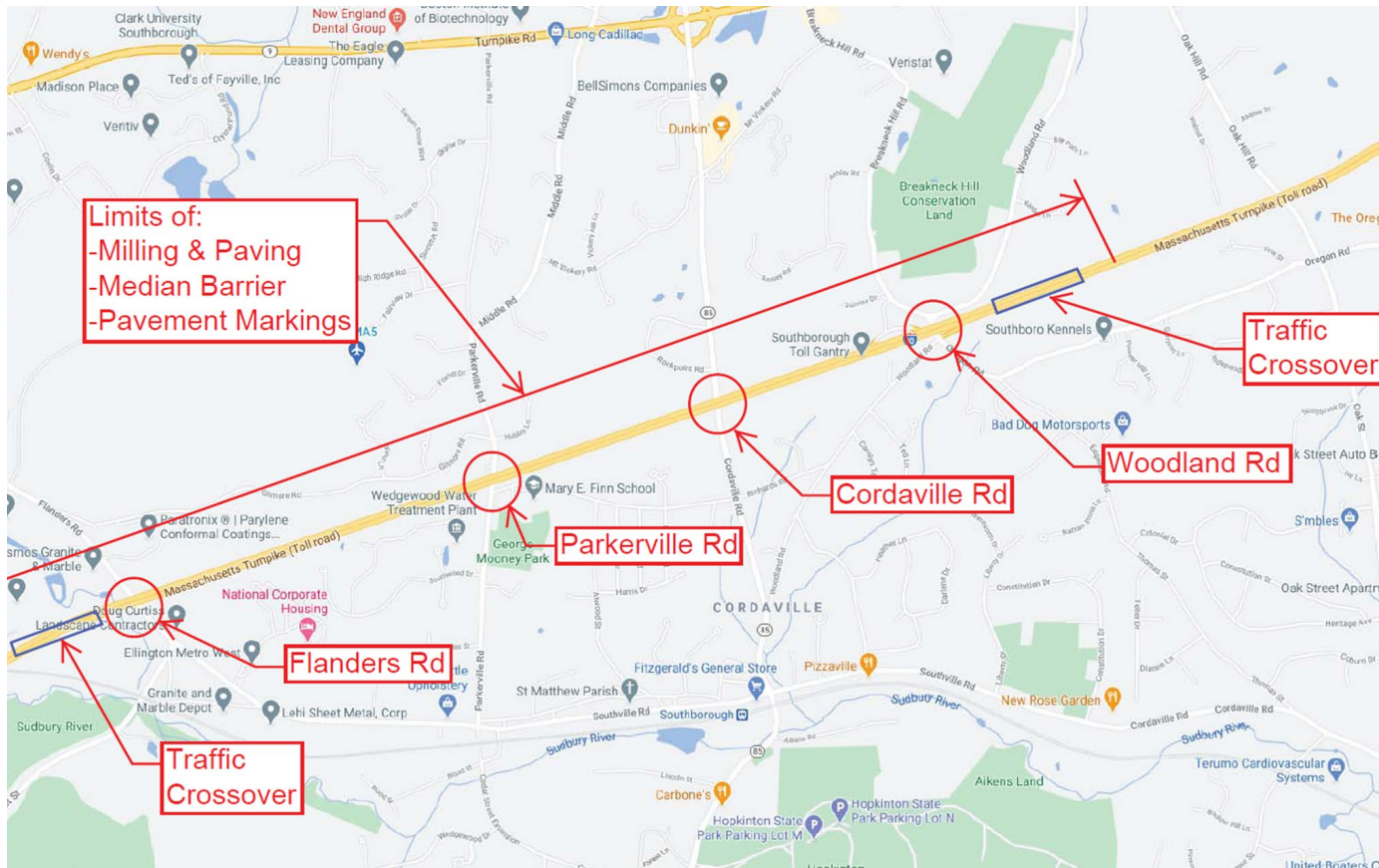
Route 18 – Weymouth-Abington – Bridge Slide

Over this past weekend:

- Full slide successfully completed
 - Route 18 and MBTA rail line opened by 4AM Monday
- Bridge lifted, a system of sliding pads and tracks and was lowered back down into place
- Horizontal jacks pushed approximately 3 feet at a time
- Bridge moved 52 Ft laterally to final location and alignment
- Travel configuration will continue to be one lane in each direction until early fall 2021.



Acceler-8 | 8 Bridges in 8 Weekends: Southborough - Westborough



Completed Work

- All 4 westbound bridges
- Westbound paving and waterproof
- 7/23: I-90 over Woodland Road

Remaining Work

- 7/30: I-90 over Cordaville Road
- 8/6: I-90 over Parkerville Road and Flanders Road
- 8/13: I-90 Pave and waterproof

Twin City Rail Trail Pedestrian Bridge Launch over Rt 2



\$7.5 million
J.H. Lynch & Sons

4.5-mile-long paved
trail will connect
Mechanic Street in
downtown
Leominster and the
Intermodal
Transportation Center
on Water Street in
downtown Fitchburg.

Project Delivery Update – FFY 2021



183 Total
Projects



79 Federal Aid
Projects



108 Towns



\$812.8 M

Project Advertisements



606476 – Boston – Sumner
Tunnel Centennial Project



607319 – Mashpee –
Corridor Improvements on
Route 151



608724 – Greenfield –
Reconstruction of Wisdom
Way

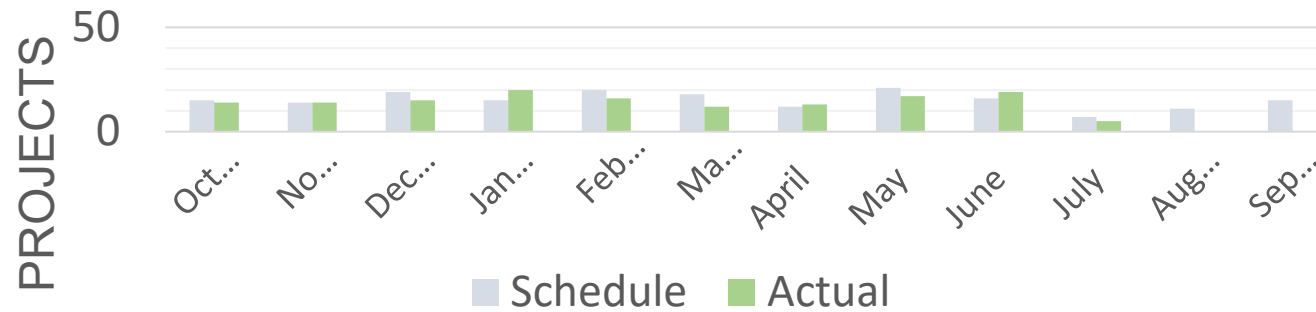
Review

With 80% of the federal calendar elapsed, the Highway Division has advanced for bidding **79%** of the 2021 plan.

To-date, **95%** of projects have been advertised or are projected on-time (within 30 days of schedule).

An additional 16 contingency projects have been advanced including two Western turnpike resurfacing projects, two MEP projects for the Transportation Building (10 PP), Substructure/Superstructure repairs to the Tobin Bridge, a project to address drainage issues at Route 9/126 & a lighting rehabilitation project for the Prudential Tunnel

2021 Advertisement Plan Progress



Central Artery/Tunnel Project Repair and Maintenance Trust Fund (CARM)

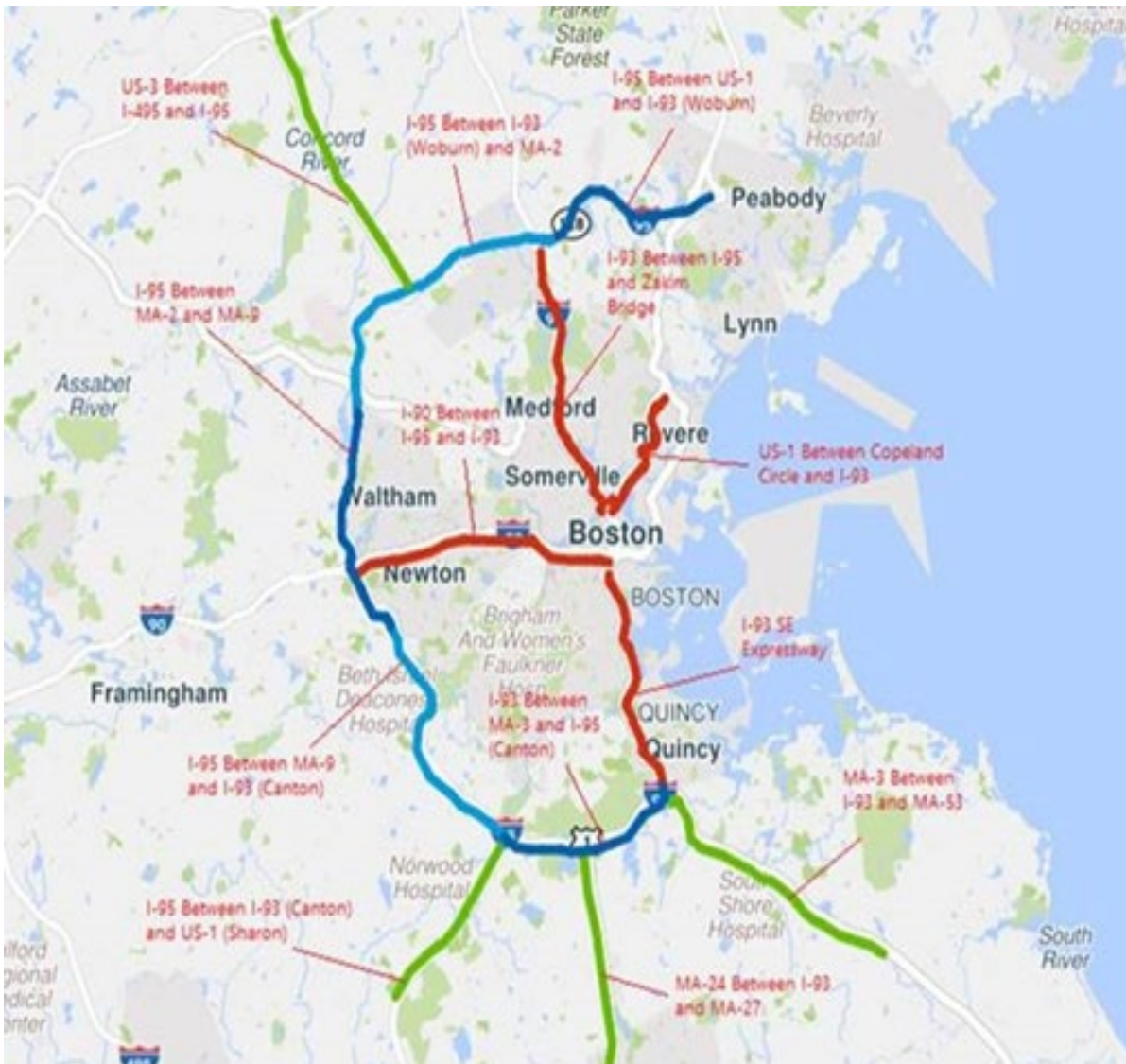
Program Status

- Initial fund balance (\$414.9M)
- Current fund balance (\$334.M)
- Forecasted construction spending through 2026 (\$146.2 M)
- 2021 MHS Triennial Report (expected October 2021) will inform future programming of the fund

Program Background

Status	Proj#	Ad Date	Complete	Description
Construction	609121	3/9/2019	3/16/2022	Boston- Lighting Repairs In The Ted Williams Tunnel (Crc 17C & 17E)
Construction	609122	11/23/2019	5/11/2023	Boston- Lighting Repairs In The I-93 Tunnel (Crc 17D & 17F)
Construction	608895	2/22/2020	5/10/2023	Boston- Miscellaneous Ramps Microsilica Overlay Replacement On I-90 & I-93 (Crc 28) Contract 2
Design	609318	12/18/2021	5/6/2024	Boston- Tunnel Lighting Replacement On I-90 Eb (Crc 17I)
Design	609343	7/9/2022	1/10/2024	Boston- Tunnel Lighting Replacement On I-90 Wb (Crc 17H)
Design	609346	10/29/2022	3/27/2025	Boston- Tunnel Lighting Replacement For I-93 (Nb/Sb) Ramps (Crc 17G)
Design	608896	11/19/2022	12/10/2024	Boston- Miscellaneous Ramps Microsilica Overlay Replacement On I-90 & I-93 (Crc 28) Contract 3

Traffic Volumes Update



Last Week's Weekday Travel Times Along Corridors compared to 2019			
	NB/SB	AM Peak	PM Peak
Highways in Boston			
I-93 SE Expressway between Braintree Split and Mass Ave Connector	NB	↓ 1.7	↑ 3.2
	SB	↑ 6.1	↓ 0.2
I-93 north of the City between I-95/128 and the Zakim Bridge	NB	↓ 1.8	↑ 2.2
	SB	↑ 1.5	↓ 0.4
I-90 between I-95/128 and I-93	EB	↓ 2.5	↓ 5.8
	WB	↓ 3.7	↓ 1.7
US 1 between Copeland Circle and I-93	NB	↓ 0.5	↓ 1.7
	SB	↓ 6.2	-
Outer Spokes			
MA-3 between I-93 and MA-53	NB	↓ 2.4	↑ 1.0
	SB	↓ 1.6	↓ 2.6
MA-24 between I-93 and MA-27	NB	↓ 3.0	↑ 2.3
	SB	↑ 0.3	↓ 2.3
I-95 between I-93 Canton and US-1 Sharon	NB	↑ 2.5	↑ 3.6
	SB	↑ 1.2	↑ 2.0
US-3 between I-495 and I-95	NB	↓ 0.3	↓ 5.8
	SB	↓ 3.4	-
Inner Beltway			
I-95 between US-1 Peabody and I-93 Woburn	NB	↑ 0.7	-
	SB	↓ 5.5	↑ 3.4
I-95 between I-93 Woburn and MA-2	NB	↓ 0.3	↓ 1.2
	SB	↓ -4.6	↑ 0.2
I-95 between MA-2 and MA-9	NB	↓ 7.4	↓ 3.0
	SB	↓ 0.6	↑ 2.0
I-95 between MA-9 and I-93 Canton	NB	↓ 2.6	↓ 0.6
	SB	-	↑ 0.6
I-93 between MA-3 and I-95	NB	↓ 1.8	↓ 0.5
	SB	↓ 1.6	↓ 0.9