

# Highway Administrator's Report

Jonathan Gulliver, Highway Administrator

July 2023

# Sumner Tunnel – Construction Update

## Progress To Date

Phase Time %  
Complete

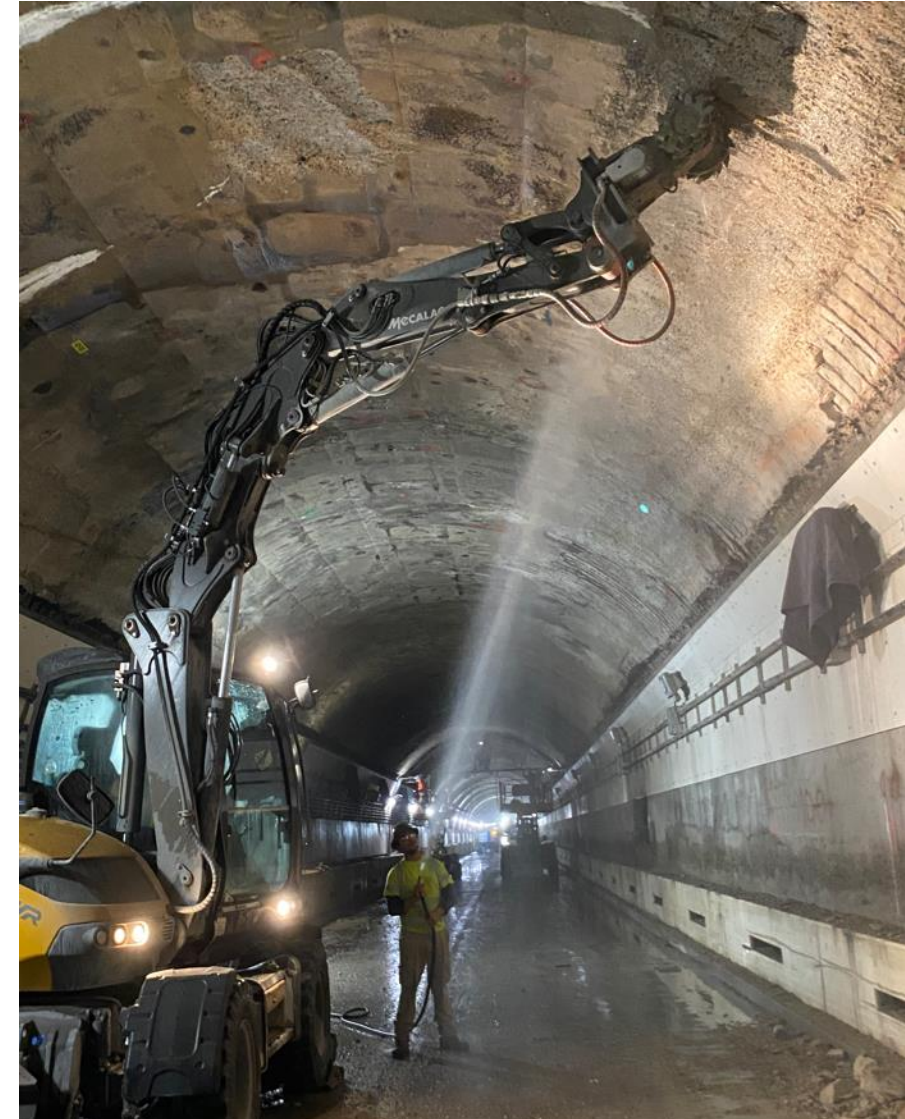


15.79%

Phase Work %  
Complete



15.40%



# Sumner Tunnel – Traffic Update

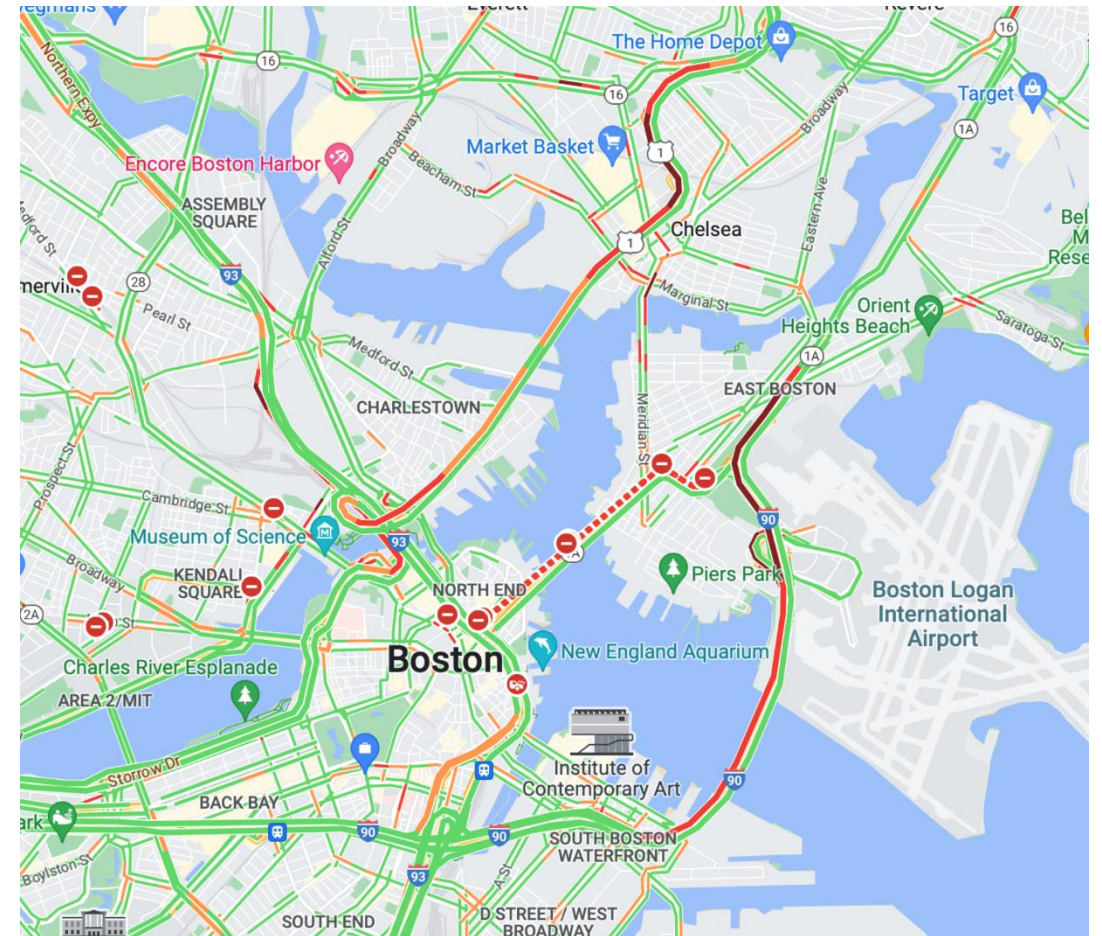
## Key Analysis

### Congestion report

- This congestion report provides a snapshot of the morning commuting period (5AM-10AM)
- The congestion pie charts and shaded travel time line graphs are shown for three major routes most directly impacted by the Sumner Tunnel Closure
- Travel times are broken down to show 15-minute granularity during the respective commuting period
- Trend maps display hourly regional snapshots
- The congestion trend maps display planning time index (PTI), which shows how long a trip takes compared to a free-flow travel time. For instance, a PTI of 2 represents a segment travel time that takes twice as long as expected under periods of limited or no congestion.

### AM Traffic Events

- Airport Departure Level Access to I-90 TWT Closed 7:38 - 8:32.
- Chelsea St Bridge open to traffic from 5 AM - 10 AM





# Organ Transportation Recap

## Timeline

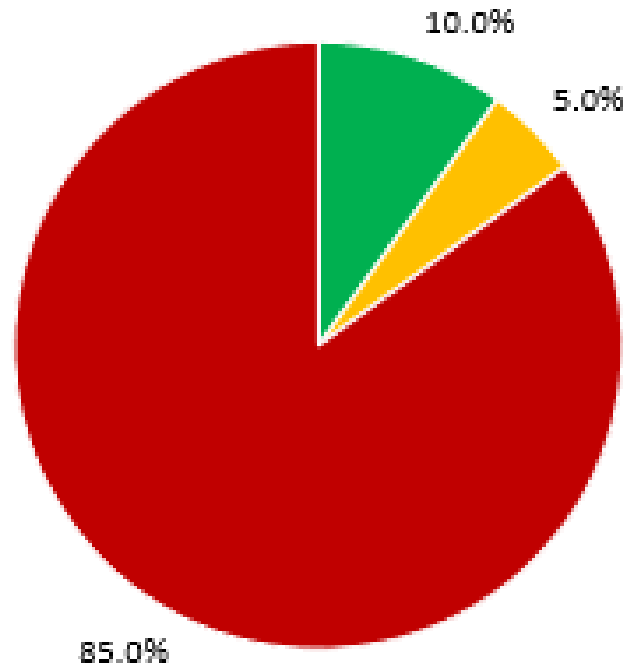
- 7:24AM
  - Received Notification MSP will shut down TWT WB @ 8:15 for a medical emergency transport
- 8:13AM
  - MSP shut down Route 1A SB/I-90WB at the TWT portal but keep airport ramps open to TWT for medical emergency transport from Logan Airport to a local hospital
  - During the time MSP were also intermittently shutting down the internal airport ramps to TWT to maintain airport ramp free-flow to TWT
- 8:17AM
  - “Wheels down” for medical emergency plane
- 8:26AM
  - MSP reopen Route 1A SB/I-90WB at the TWT portal

## Traffic impacts – From Bell Circle to the TWT Portal

- Slight increase in travel time compared to yesterday – average of 5 minutes
  - Those at the front of the queue experienced 13 minutes of delay but those who arrived after experienced less
- Traffic recovered to base-line tunnel closure by 8:34AM
- Travel time impacts never reached Tuesday travel times
  - 5 minutes less than Tuesday even with the 13-minute road closure

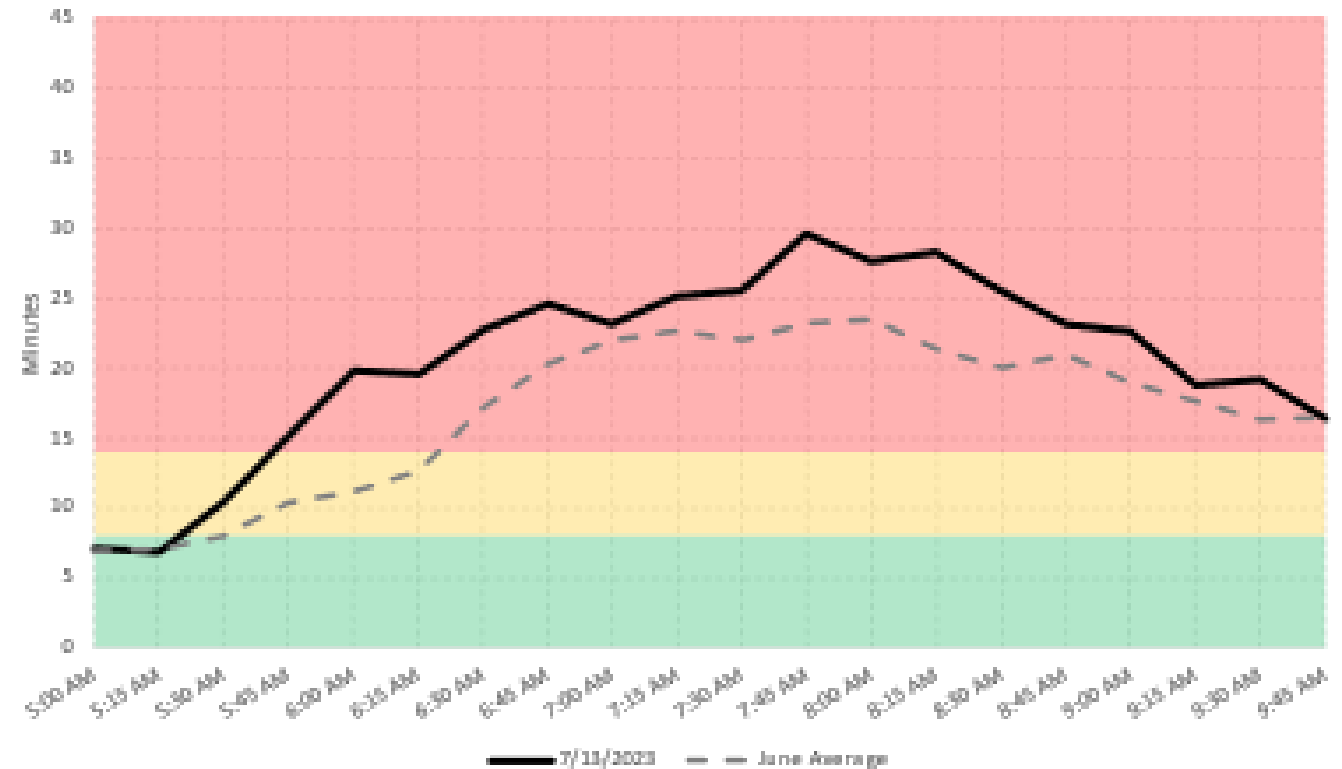
# Rt-1A SB between Bell Circle and Ted Williams West Portal

MA-1A SB Bell Circle to Ted Williams Terminus -  
Percent of AM Peak Congestion 5AM - 10AM



■ Little or No Congestion (<15% Delay) ■ Minor Congestion (15-100% Delay) ■ Major Congestion (>100% Delay)

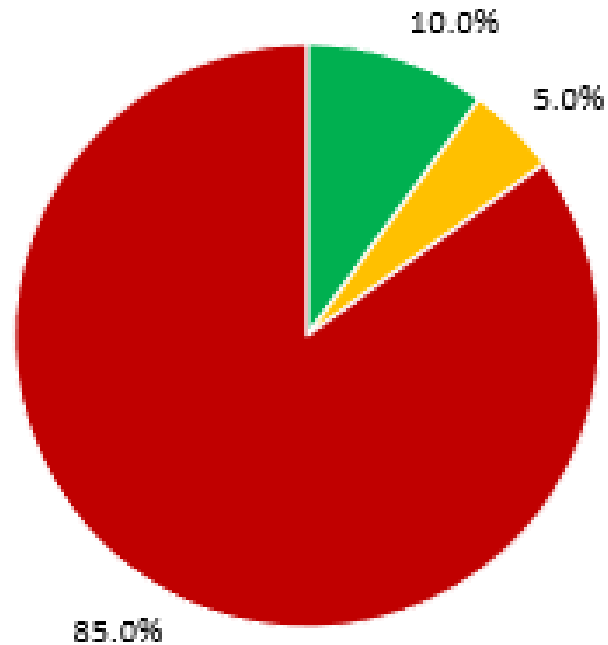
Travel Times for 7/13/2023



- Refer to previous page for information related to Medical Emergency Incident between 8:13AM and 8:26AM
- Travel time peaked at 7:45AM and was approximately 7 minutes slower than the June average

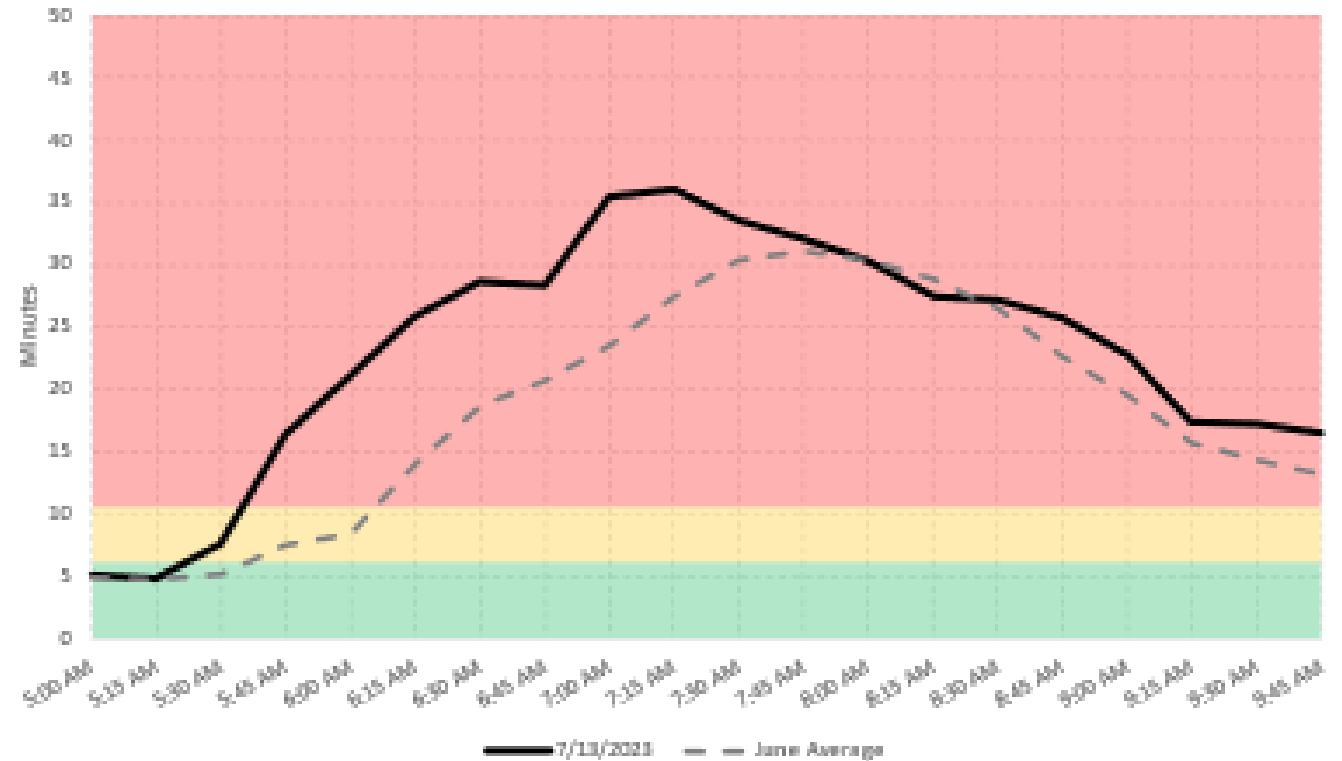
# US-1 SB between Copeland Circle and I-93

US-1 SB Copeland Circle to I-93 - Percent of AM Peak Congestion 5AM - 10AM



■ Little or No Congestion (<15% Delay) ■ Minor Congestion (15-100% Delay) ■ Major Congestion (>100% Delay)

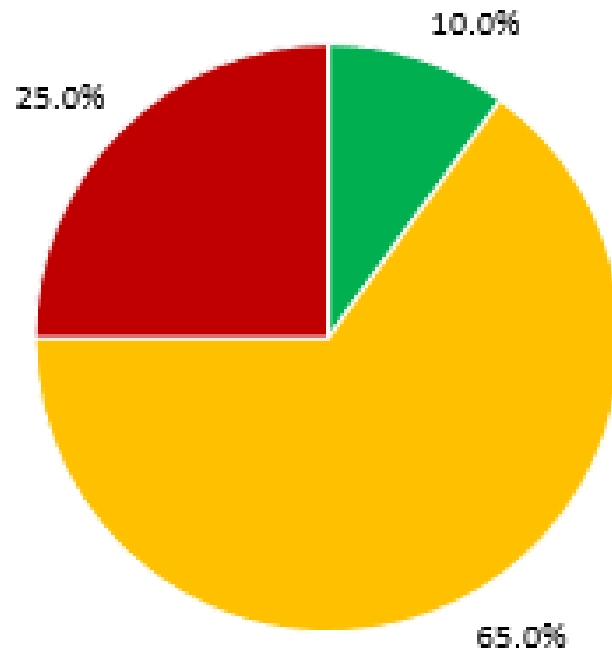
Travel Times for 7/13/2023



- Travel time peaked at 7:15AM and was approximately 9 minutes slower than the June average

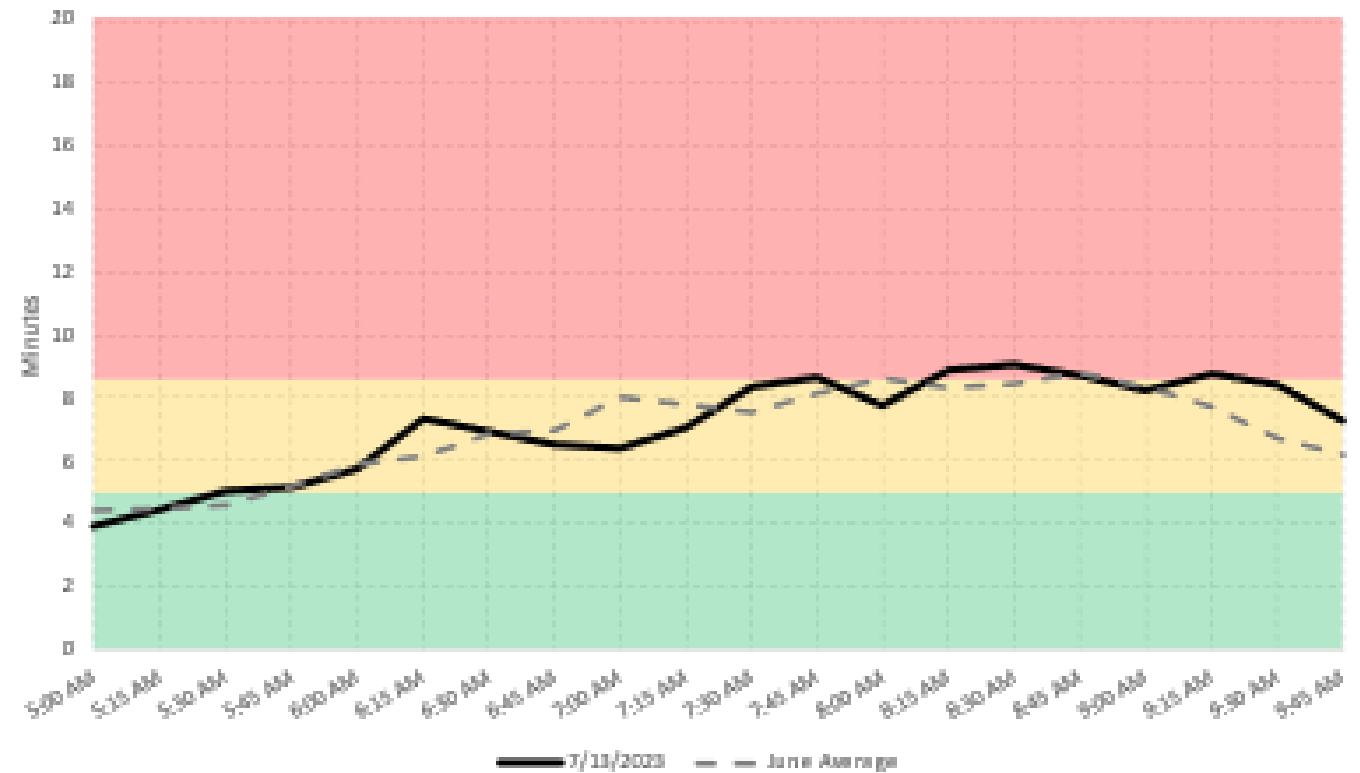
# Rt-99 SB Between Sweetser Circle and Gilmore Bridge

MA-99 SB From Sweetser Circle to Gilmore Bridge -  
Percent of AM Peak Congestion 5AM - 10AM



■ Little or No Congestion (<15% Delay) ■ Minor Congestion (15-100% Delay) ■ Major Congestion (>100% Delay)

Travel Times for 7/13/2023



- Travel Times along Rt-99 were similar to the June Average with a small increase between 8:15 and 8:45 AM

# Transit Update

