

Highway Administrator's Report

Jonathan Gulliver

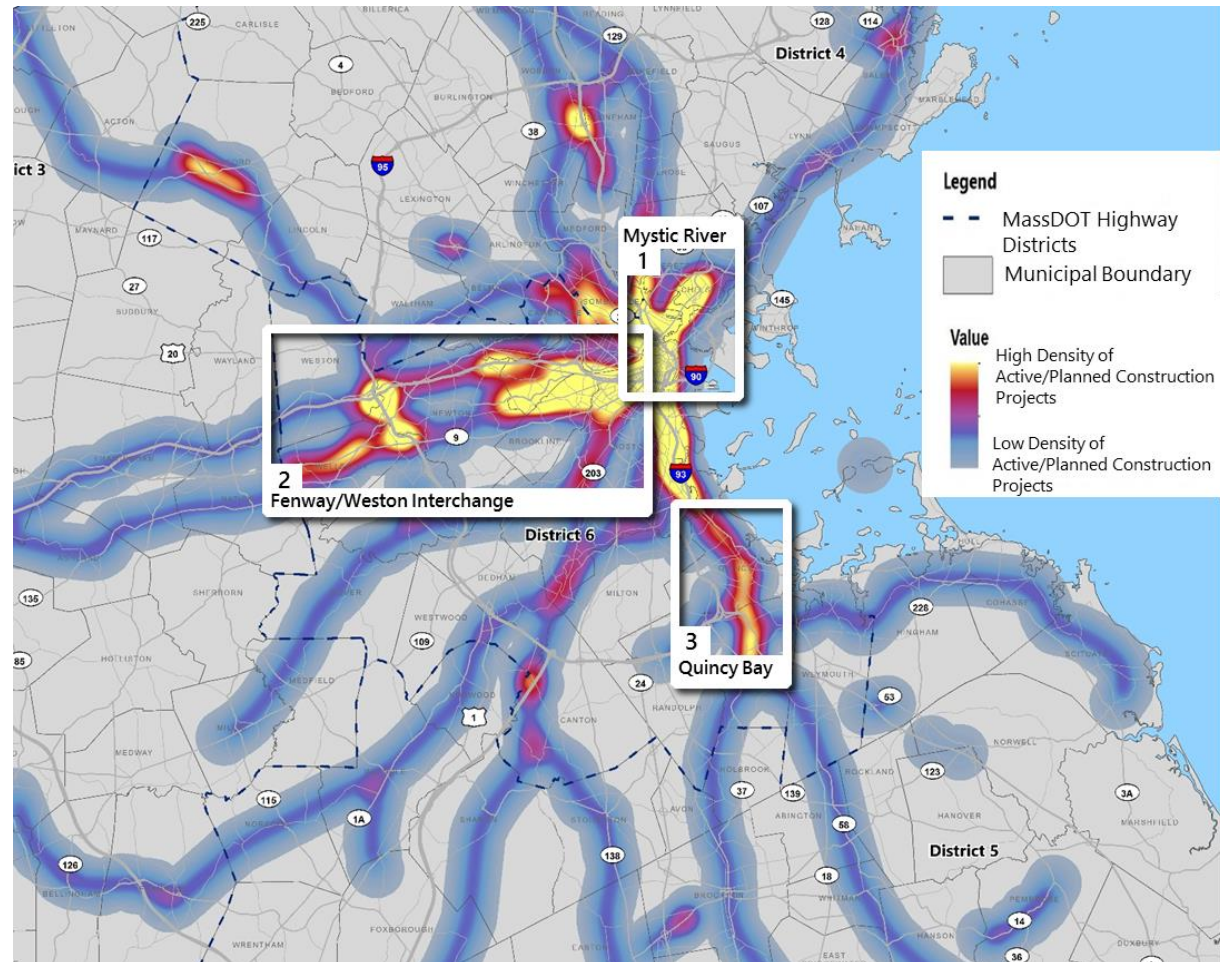
March 19, 2018

Snow and Ice Season 2017-2018 Updates

- To Be Updated Prior to Meeting

2018 Construction Season

- \$1.5 billion in Highway construction projects in 2018
- Most Highway projects are to the North and West of Boston
- Collaboration with MBTA and Commuter Rail



North Washington Street Bridge

- City of Boston owned bridge; MassDOT Highway construction
- Bids opened on 2/28/2018
- \$176 million low bid from JF White; total project cost is \$205M
- Construction duration 2018-2022
- Communication and neighborhood outreach part of broader efforts for 2018 construction season.



Complete Streets Round 4

Training

86% municipalities trained

Policies

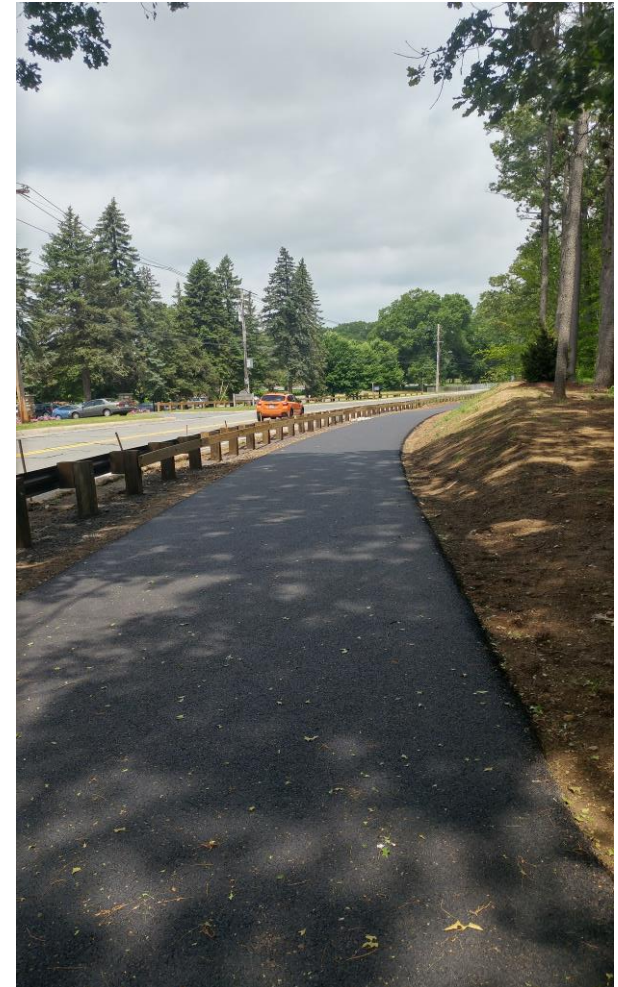
151 Policies Approved (Tier 2)

Technical Assistance

- 108 Technical Assistance Awards totaling \$4 million (35% BMHI)
- 91 Prioritization Plans Approved (Tier 3)

Construction

- 23 Construction awards totaling \$5.5 million this round
- 71 Construction awards totaling \$23 million since 2017 (40% BMHI)
- >75% eligible municipalities have received construction funding
- 2 Groundbreakings and 2 ribbon cuttings



**Dudley-Mt. Wayte Corridor Bicycle & Pedestrian Improvement Project
Framingham - Phase One -
\$400,000**

Chapter 90; H2783

- \$200M proposed for FY19

State Fiscal Year	Funding Level	Reimbursement (to date)
2017	\$200M	\$230.2M
2018	\$200M	\$107.8M

- In 2018, we will complete migration of state aid ledger systems into PINFO and Map-IT.
- Community Grants Administrator position in Highway to work on facilitating customer service and streamlining internal operations in Highway for municipal grants programs including Ch.90, Complete Streets, Small Bridge .

Hiring Plan Update

- Working with Human Resources and Labor Relations, the Division has:
 - Aggressively pursued priority hires within the construction and operations service areas
 - Reduced the time to hire by streamlining the current process
 - Established “HR on the road” program, linking headquarters staff to the districts
 - Implemented HR Analytics suite of tools for consistent information and management
- In April, the Highway Division will provide a comprehensive overview of staffing levels in construction, project development and operations, including:
 - Rates and reasons for attrition within the division
 - Construction and maintenance staffing targets
 - Current staffing levels by discipline (e.g. construction, operations, administration and finance)
 - Current status of the hiring plan
 - Current time to hire