
Report from Acting Highway Administrator:

Update on Waze and Commonwealth Avenue Bridge

July 17, 2017

- MassDOT Highway Division has partnered with WAZE to install navigational beacons within the tunnel system in order to improve GPS reception where reception is poor.
- This partnership will improve safety and the customer experience within the tunnel system by reducing driver confusion.
- Installations will occur in the Ted Williams, Cana, and O'Neil tunnels
- These beacons were provided to MassDOT at no cost, and the Highway Division is installing these beacons during pre-scheduled tunnel lane closures



Photo credit: venturebeat.com

- Enable uninterrupted location services underground ensuring drivers never miss an in-tunnel exit.
- Providing seamless navigation to drivers underground where GPS signal is not possible.
- Improve driver routing and safety
- Better visibility and traffic flow into, through and out of tunnels means safer road conditions for all.
- Free and open technology means all GPS providers can incorporate the Waze Beacons solution, serving Waze users and non-Waze drivers alike.



- 850 beacons (no cost, but valued at \$23,000)
- Approximately 42 beacons per mile of tunnel are required for effective operation.
- Testing occurred during June with installation beginning in July.
 - Scheduled to be complete by end of July
- The beacons transmit data to drivers, but do not collect information. Therefore this technology does not raise privacy concerns.



*MassDOT Tunnel Engineer
installing beacons*

-
- Project will use accelerated bridge construction to replace the full superstructure over two intensive construction windows: Summer 2017 (eastbound portion of the bridge) and Summer 2018 (westbound portion of the bridge)
 - During Summer 2017 construction, there will be an 18 ½ day intensive closure window which will have significant impacts to local/regional vehicular traffic and Green Line/Commuter Rail travelers.
 - **This construction window will occur from July 26th – August 14th**
 - Initial lane reductions to 3 lanes in each direction on I-90 went into place on July 7th
 - I-90 will be reduced to 2 lanes in each direction on July 28th
 - This window was carefully selected timeframe to minimize traffic impacts, based on traffic volumes, MBTA ridership, Boston University summer break, and special events in the area.
-

Project Schedule

Facility	Traffic Impact	Notes
MBTA Green "B" Line (Blandford St to Babcock St)	Closed from Blandford St to Babcock St for 18½ days	<i>Shuttle bus service between Blandford St and Babcock St</i>
MBTA Bus Routes CT2 and 47	Detoured from normal routes for 17 ½ days	<i>Detour maps will be provided</i>
Commonwealth Avenue (Packard's Corner to Kenmore)	Closed to private vehicular traffic for 17½ days	<i>Bridge open to only buses, emergency vehicles, peds/bikes</i>
BU Bridge	Closed to private vehicular traffic for 17½ days	<i>Bridge open to only buses, emergency vehicles, peds/bikes</i>
I-90	Traffic shift for 9½ days	<i>2 lanes each direction during peak period</i>
MBTA Commuter Rail (Worcester Line)	Closed from Boston Landing to South Station for 2 weekends	<i>Shuttle bus service from Boston Landing to Reservoir Station (Yawkey Way during Sox games)</i>
Amtrak (Lake Shore Line)	Closed for 2 weekends	<i>Shuttle bus service from Albany, NY to Boston</i>

	Wed 26-Jul	Thurs 27-Jul	*Fri* 28-Jul	*Sat* 29-Jul	*Sun* 30-Jul	*Mon* 31-Jul	*Tues* 1-Aug	*Wed* 2-Aug	*Thurs* 3-Aug	*Fri* 4-Aug	*Sat* 5-Aug	*Sun* 6-Aug	Mon 7-Aug	Tues 8-Aug	Wed 9-Aug	Thurs 10-Aug	Fri 11-Aug	Sat 12-Aug	Sun 13-Aug	Mon 14-Aug
MBTA Green Line Bus Diversion	9:00 PM	x	x	x	x	x	x	x	x	x	x	x	x	x	x	x	x	x	x	5:00 AM
Comm Ave CLOSED to private vehicular traffic		7:00 PM	x	x	x	x	x	x	x	x	x	x	x	x	x	x	x	x	x	5:00 AM
BU Bridge CLOSED to private vehicular traffic		7:00 PM	x	x	x	x	x	x	x	x	x	x	x	x	x	x	x	x	x	5:00 AM
MBTA CT2 & 47 Detours		7:00 PM	x	x	x	x	x	x	x	x	x	x	x	x	x	x	x	x	x	5:00 AM
I-90 Lane Reductions			9:00 PM	x	x	x	x	x	x	x	x	x	5:00 AM							
Commuter Rail Bus Diversion				x	x						x	x								

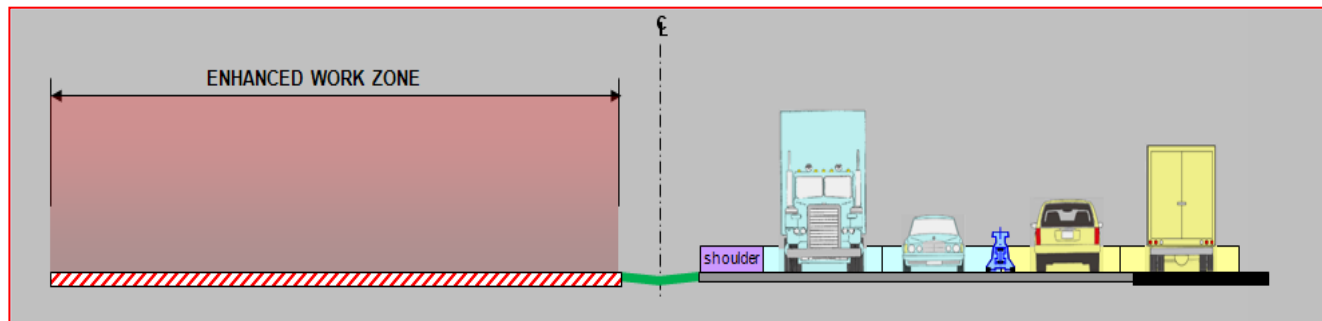
Shuttle to
Yawkey

Shuttle to
Yawkey

* = Red Sox Home Games

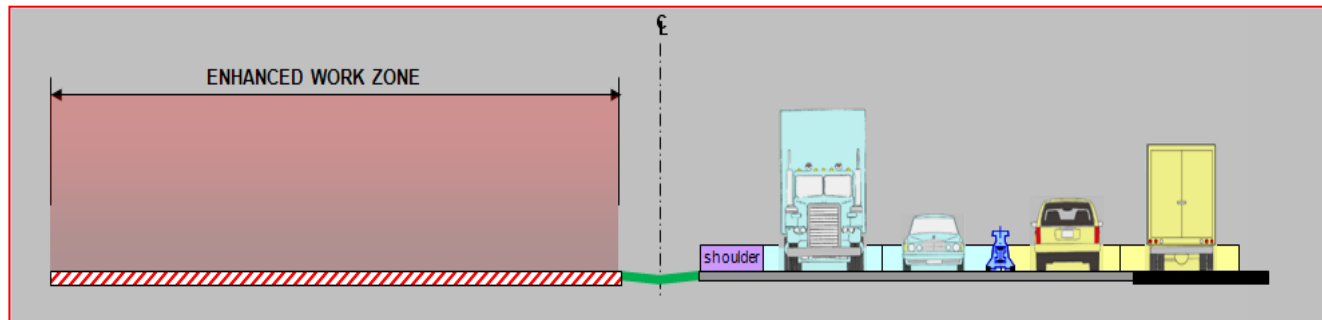
I-90 “Cross Over” and Dry Run

MassDOT is using a “zipper barrier” and other traffic control devices to channelize traffic to one side of I-90. Dry run completed last month successfully.



I-90 “Cross Over” and Dry Run

Dry run data helped inform the project team on traffic flow and enabled adjustments to be made in advance of major construction window.



Completed

- 5 Public meetings 3 legislative briefings
- Targeted stakeholder briefings
- Dedicated Project Email Address
- Active Project Website (www.mass.gov/massdot/commavebridge)
- Email to E-ZPass holders (for Dry-run)
- Door to door flyers / business outreach
- Printed materials (brochures, flyers) available in multiple languages

Ongoing

- Business Working Group Meetings
- Working Group meets bi-weekly with 5 subcommittees
- Outreach to Taxis/TNCs
- Coordination with Hubway for additional pickup locations
- Coordination with Waze/Google for road closures

Upcoming

- Real Time Traffic Monitoring System active during shutdown
- Email Red Sox season ticket holders
- Radio and Television spots during Red Sox game broadcasts
- MBTA Marketing Campaign
- Keolis Rail Mail
- Emails to E-Zpass holders
- VMS Board advertisements

Immediate Next Steps

- More information can be found at
www.mass.gov/massdot/commavebridge