



MassDOT Highway Construction Contract: 114659
Resurfacing and Related Work on Route 20
City of Marlborough

Board Meeting
September 21, 2021

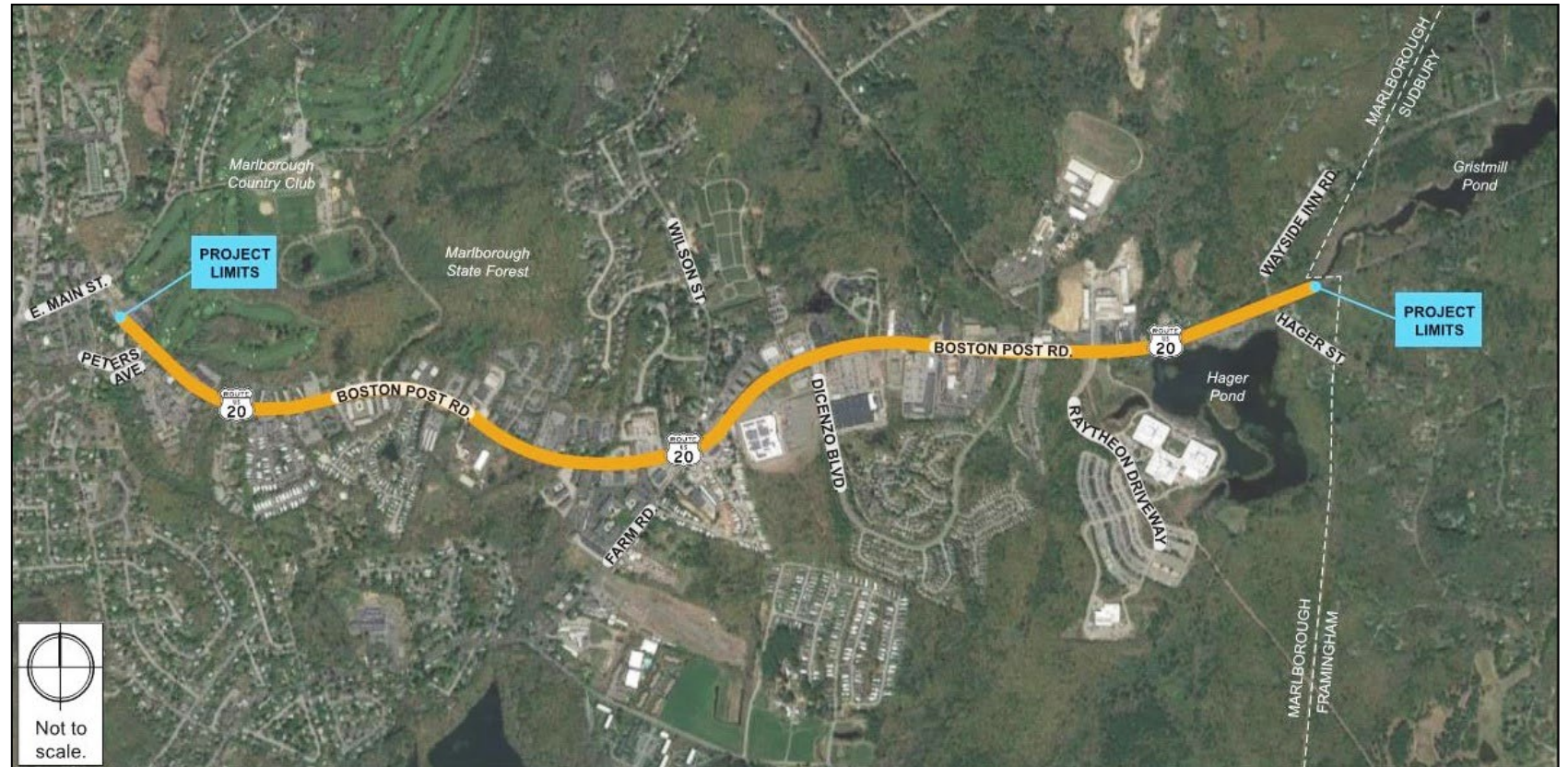
Project Location

Project Limits

Just West of Peters
Ave to Just East of
Wayside Inn Road

Total Project Length

2.4 Miles



Purpose and Need



Existing Issues

- Deteriorating Pavement
- Deficient Pedestrian Accommodations
- Lack of Bicycle Accommodations
- Traffic Signalization
- Corridor Safety
- Stormwater Management and Drainage

Purpose and Need (cont'd)

Deteriorating Pavement: Cracking, Rutting, and Patching



Just East of Diczio Blvd at Route 20
(opposite Home Depot)



Phelps Road at Route 20

Purpose and Need (cont'd)

Deficient Pedestrian Accommodations



Just east of Phelps Road at Route 20



Just west of Marlborough Square Strip Mall

Purpose and Need (cont'd)

Lack of Bicycle Accommodations

East of Signalized
Dicenzo Blvd Intersection
– Looking Eastbound



Traffic and Safety Needs



Frequent Crashes

- Analyzed over 430 crashes in Corridor
- All evaluated road segments located between the study area signalized intersections have a crash rate above MassDOT District 3's average
- Only Route 20 at Peters Avenue intersection has a crash rate above MassDOT District 3's average
- Majority of crashes are:
 - Angle Crashes
 - Rear-Ends

Construction Scope



Resurfacing and Related Work on Route 20:

- Resurface and Reconstruct Pavement
- Provide ADA Compliant Pedestrian Accommodations
- Provide Sidewalks and Bicycle Accommodations on both sides of corridor for entire project limits
- Upgrade existing traffic signals/controls at existing signalized intersections
- Introduce RRFB pedestrian crossings at 3 key locations within project limits
- Reduce Traffic Conflicts and Improve Access
- Reduce Ponding and Improve Drainage System
- Improve Treatment of Stormwater Runoff
- Install New Non-Participating Water Main with the City of Marlborough DPW

Construction Scope (cont'd)

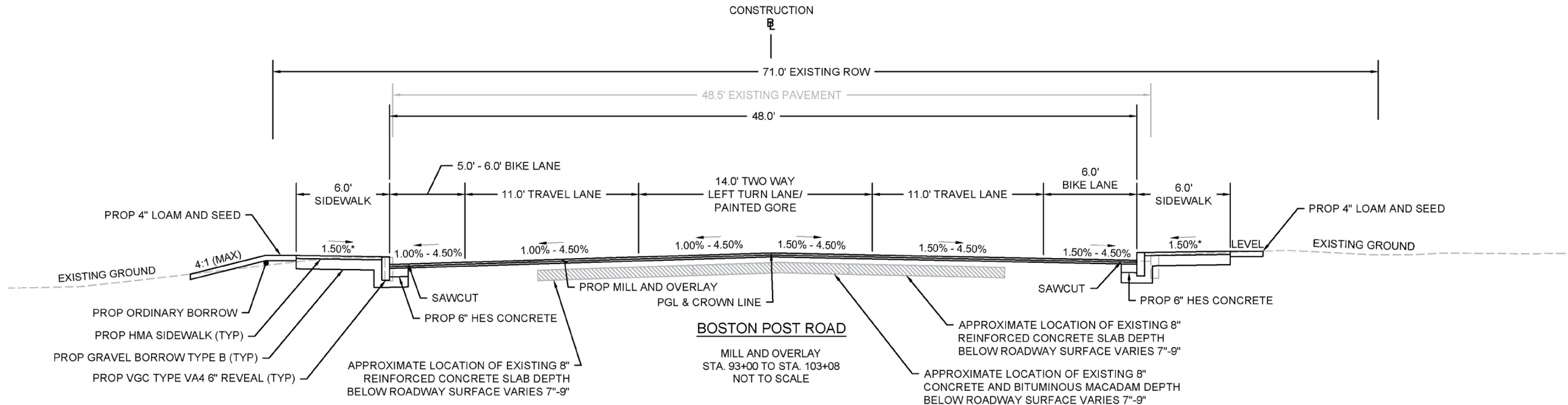


Other Proposed Improvements:

- Two-way Left Turn Lanes
- Left turn pockets
- Intersection upgrades
- Rect. Rapid Flashing Beacon (RRFB) at 3 locations

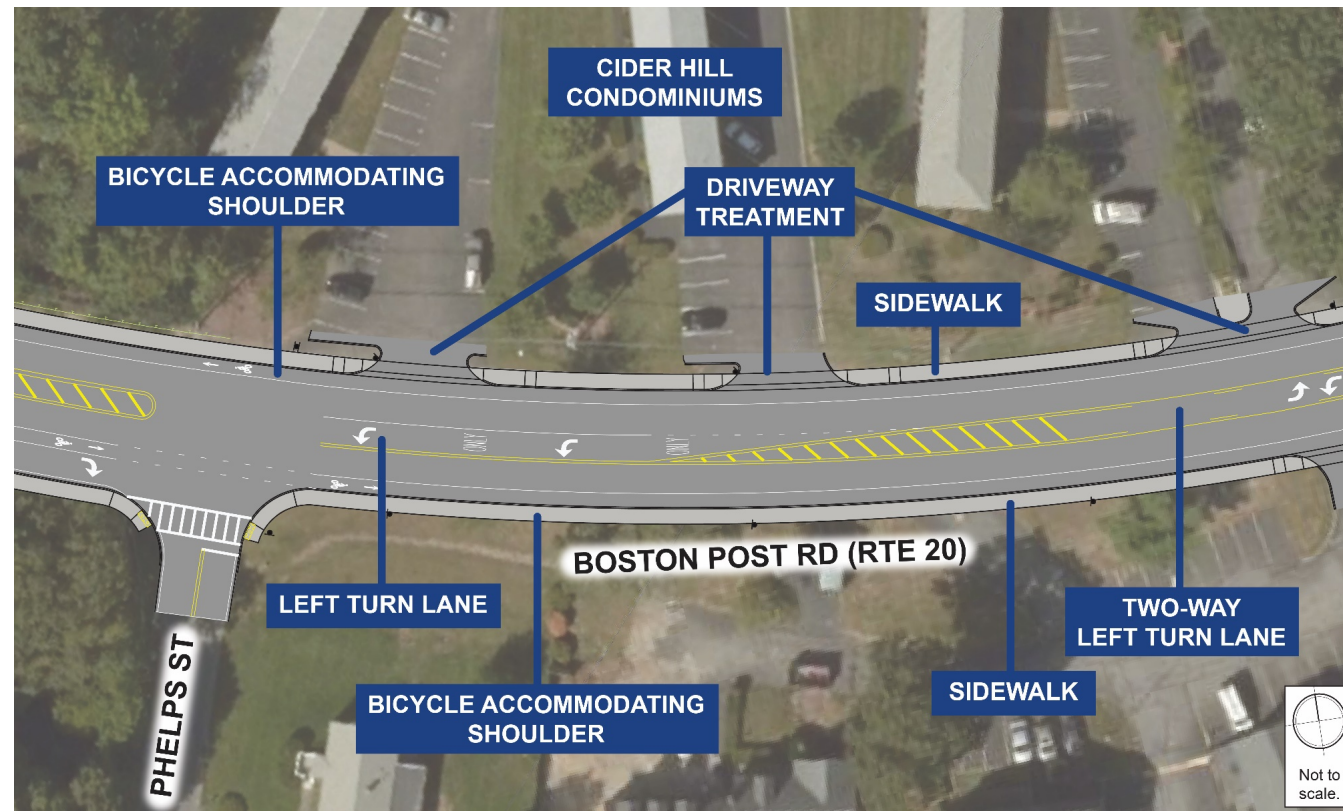
Construction Scope (cont'd)

Typical Section Route 20 Mainline



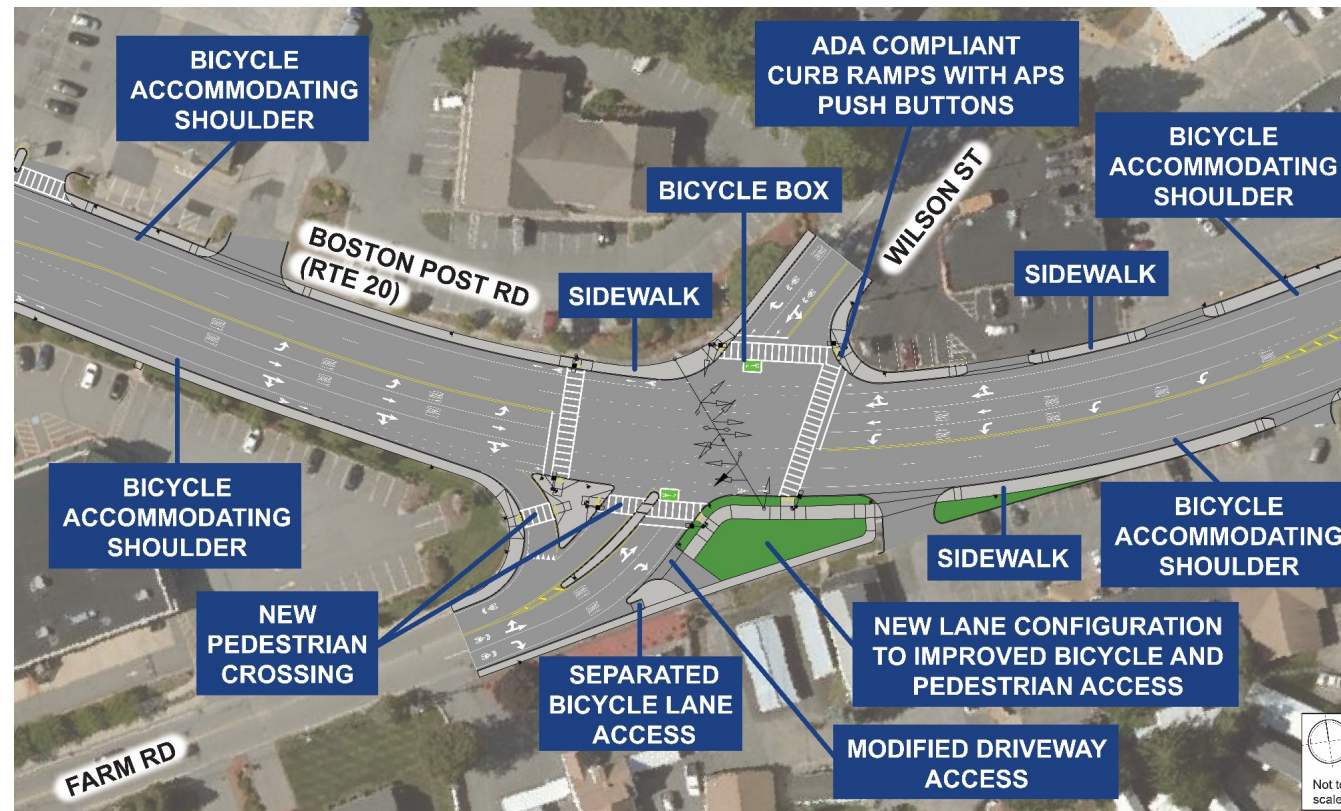
Construction Scope (cont'd)

Proposed Improvements: Left Turn Pockets



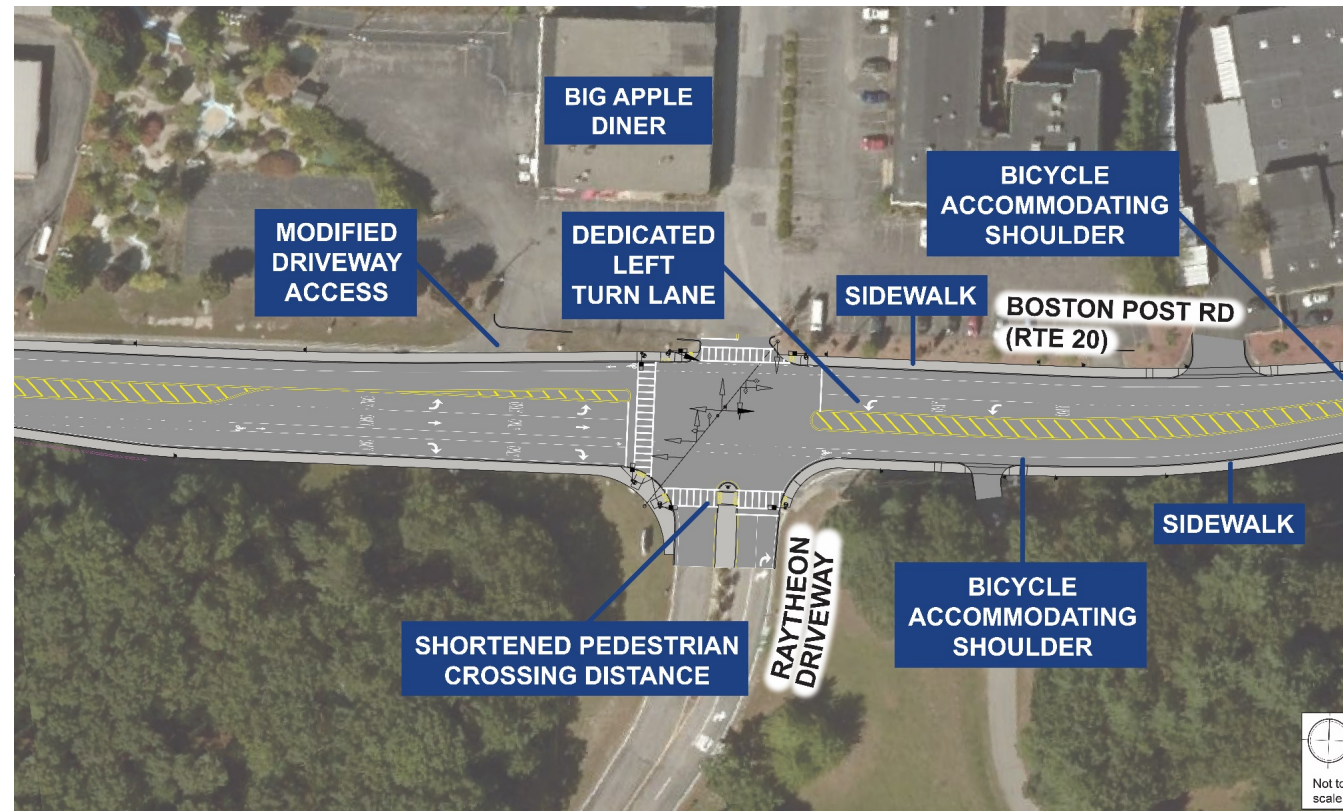
Construction Scope (cont'd)

Proposed Improvements: Farm Rd at Route 28



Construction Scope (cont'd)

Proposed Improvements: Raytheon Driveway at Route 20



Procurement



- Project was advertised May 29, 2021
- Engineers Estimate was \$16,027,473.00
 - Includes Estimated Non-Participating Work: \$2,823,937.00
- Bid Opening was July 27, 2021
- A total of Ten (10) bids were received. The top 5 apparent low bids were:
 - **Ludlow Construction Co. Inc. \$15,851,312.50**
 - Baltazar Contractors, Inc. \$16,139,992.00
 - MDR Construction Co. Inc. \$16,423,775.00
 - J Tropeano Inc. \$16,584,364.42
 - Albanese D & S, Inc. \$17,883,482.75

Overall Project Budget



Line Item	Budget
Bid Amount	\$15,851,312.50
Contingencies	\$ 1,585,131.25
Construction Engineering	\$ 792,565.63
Total	\$18, 229,009.38

- \$9,511,331.00 cost for this construction contract is funded with 80% Federal Highway Funds and 20% State funds.
- \$3,692,205.00 cost for this construction contract is funded with 100% State funds
- \$2,823,937.00 cost is funded by the City of Marlborough
- Programmed amount in the 2021 TIP: \$11,744,328.00

Request of the Board



VOTED

To authorize the Secretary, or his designee, to award and execute MassDOT Construction Contract 114659 for resurfacing and related work along a section of Route 20 in Marlborough, with Ludlow Construction Co. Inc., in a form approved by the General Counsel, in the amount of \$15,851,312.50.