



## Pilgrim NDCAP Update

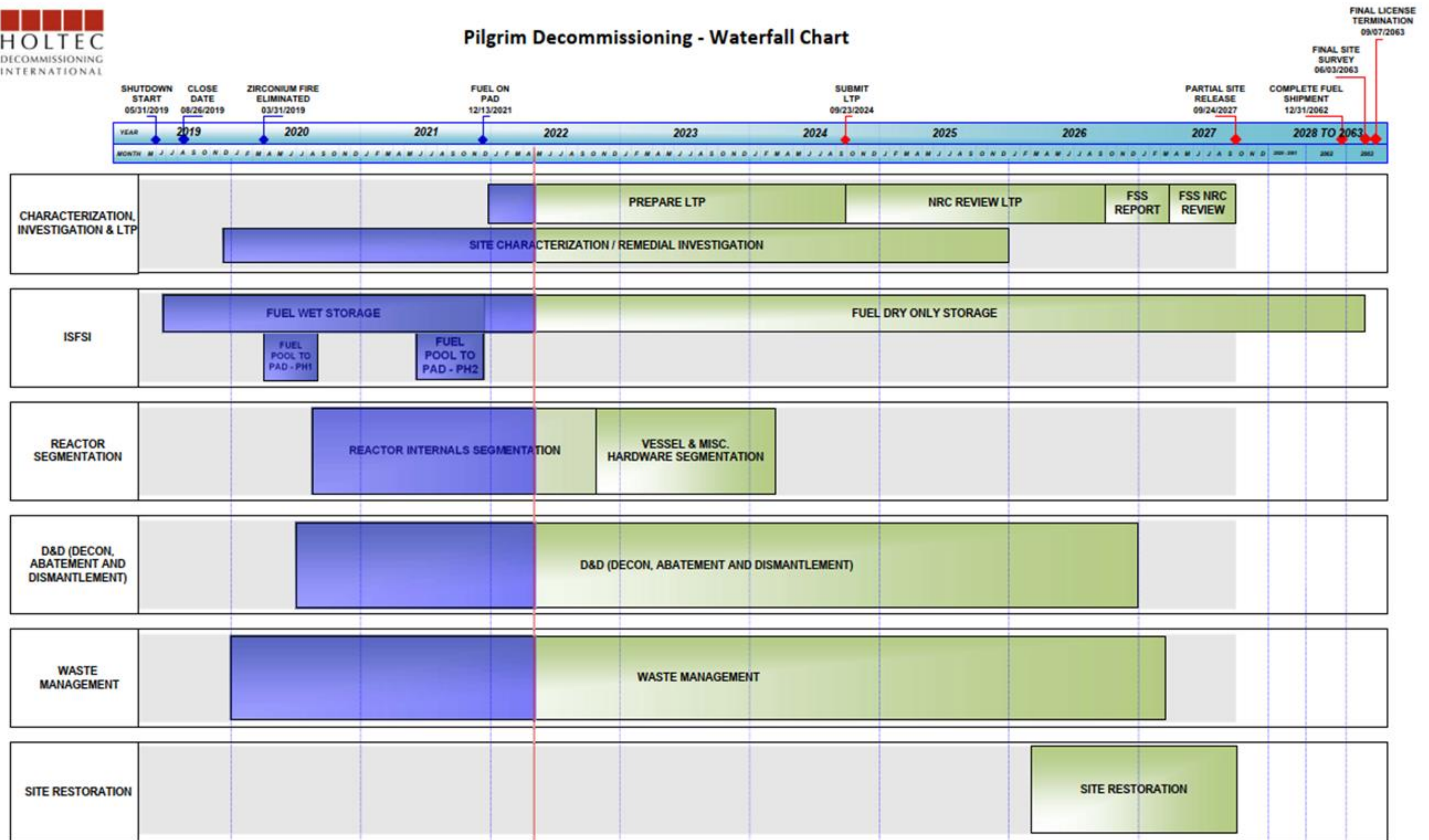


May 23, 2022



# Draft Waterfall Chart

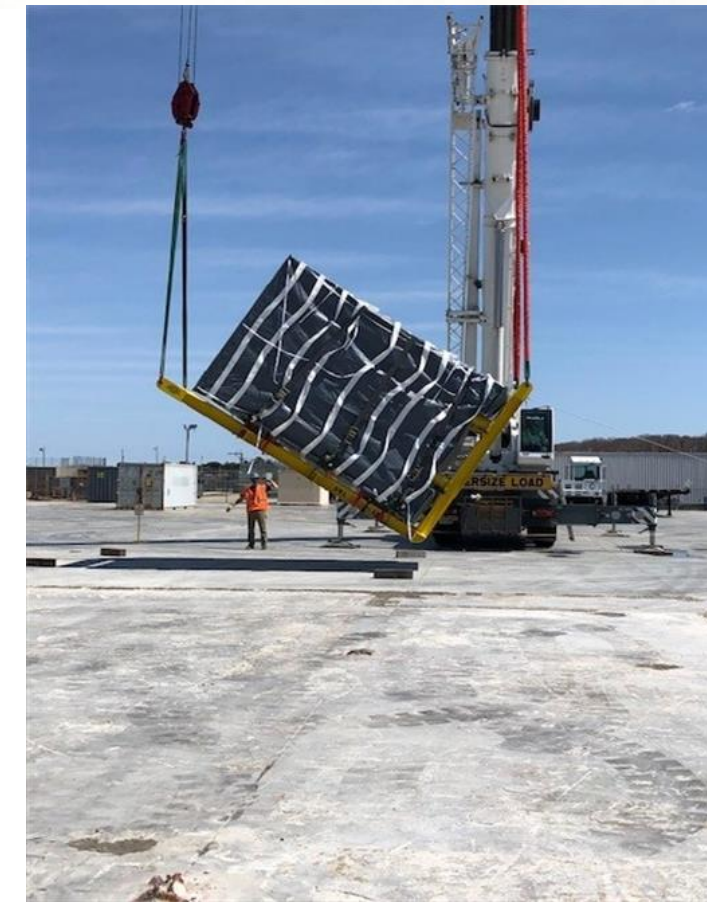
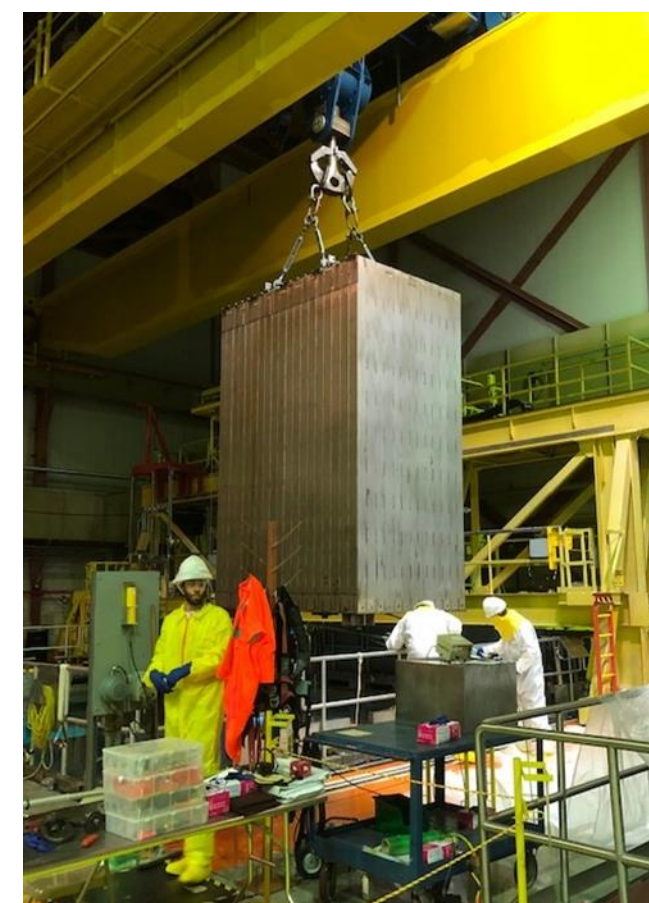
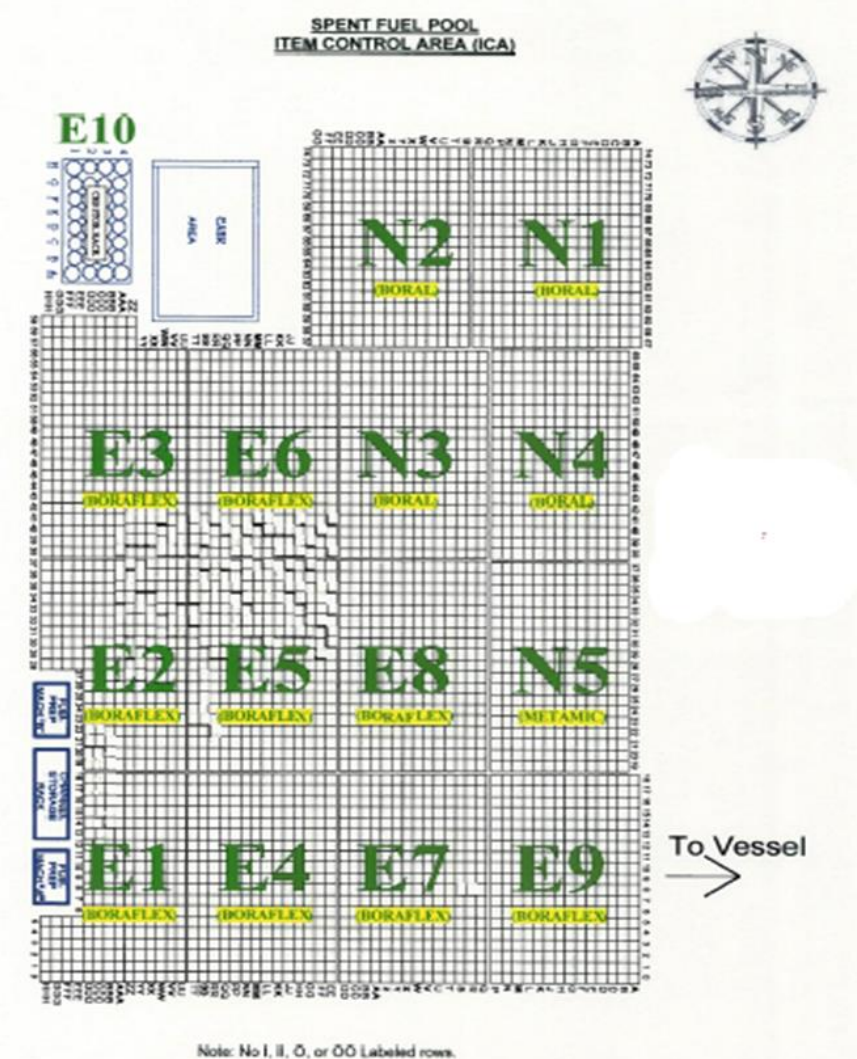
Pilgrim Decommissioning - Waterfall Chart





# Reactor Segmentation and Refuel Floor Work

- Five (5) Spent Fuel Pool Racks have been removed, pressure washed, packaged and shipped – N1-N5
- Nine (9) racks remain to remove and ship

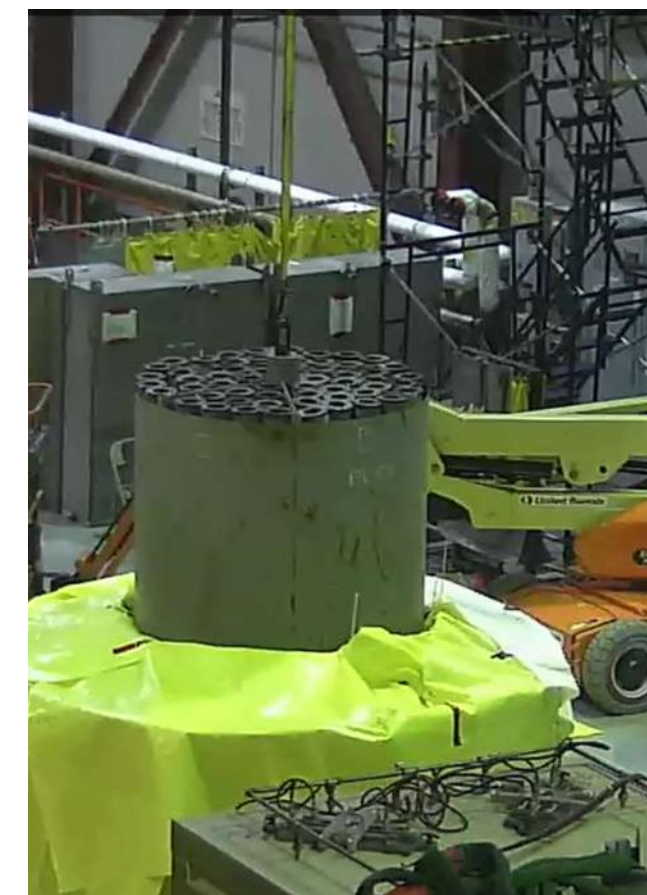
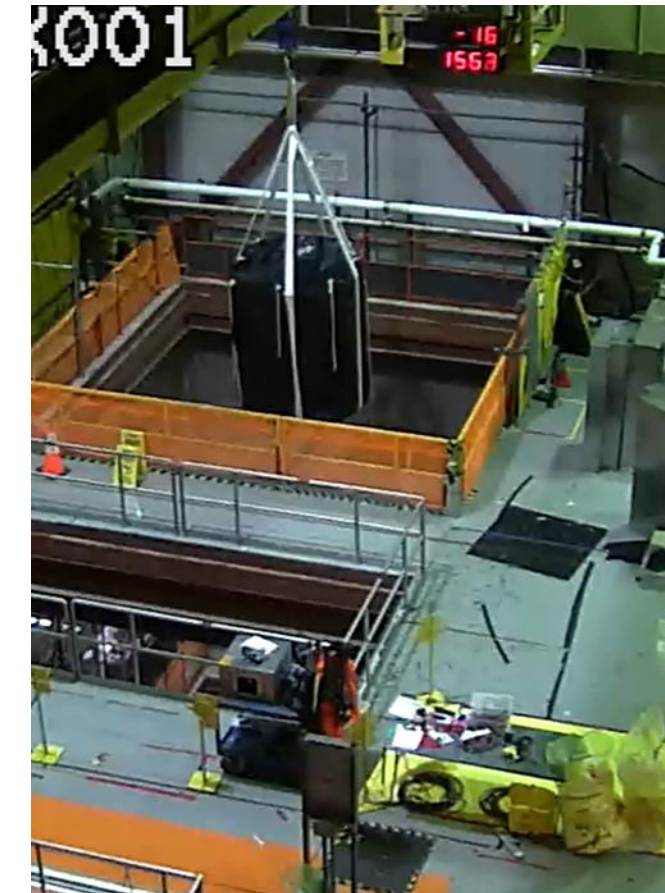


- N4 Fuel Rack removed from pool after pressure washing
- N4 Rack placed into containment bag
- N4 Rack Shipping bag placed over containment bag
- N2 Rack being upended prior to shipment



# Reactor Segmentation and Refuel Floor Work cont.

- Tri-nuke filters generated during vessel segmentation being processed for disposal
- 600 filters have been packaged and 480 have been shipped; the carousel at right holds 120 filters for disposal





# Demolition

- Upcoming demolition
  - Trash Compaction Facility
  - Executive Administration building
  - Two-story Butler Building
- Bid awarded this week to vendor
- Worked to commence in July





# Demolition

- Underground storage tank removal
  - 6 of 8 will be removed in June (Blue)
  - 2 remaining are heating fuel for the boiler systems of turbine and reactor buildings





# Demolition cont.

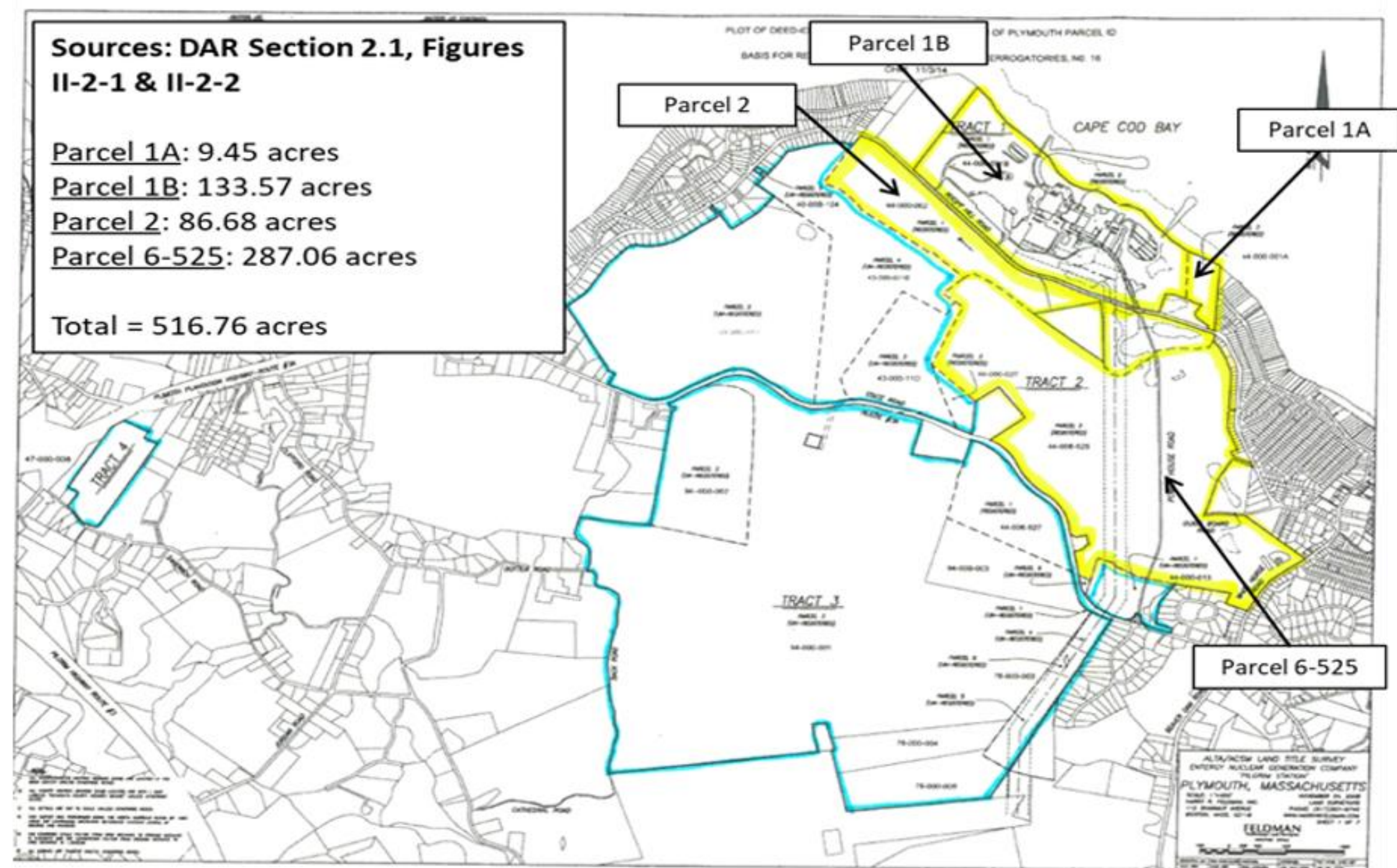
- More than 50% of outbuilding square footage has been demolished (**Red**)
- 2022 Demo upcoming (**Blue**)
  - Two-story Butler Building
  - Old Admin
  - TCF





# Site Characterization

- Industrial Area (Parcel 1B) submitted the Phase 1 Report, Tier Classification Document, and Phase 2 Scope
- Non-Industrial Licensed Property (Parcels 1A, 2, 6-525) made the 120 day reports to MassDEP for non-radiological Oil and Hazardous Materials slightly above reportability thresholds. Reports included sample results where the accuracy was above the reportable concentration. These are being resampled using more accurate methods





# Regulatory Affairs



- Submitted Annual Radiological Reports for calendar 2021:
  - Annual Radioactive Effluent Release Report – Quantities of radioactive isotopes released in liquid and gaseous releases for the calendar year
  - Annual Radiological Environmental Operating Report- Measurement of radioactive materials found in the environment surrounding the facility
  
- ISFSI Visually Obstructive Plantings
  - WWTF Leach Field modification permitting approved
  - Work commences 5/30/22



# Pilgrim Update-Waste Management

- Radioactive Waste Shipments – Completed in 2022 thru May 17
  - 1 x CRDM Filter Shielded Container (Class C) Part 37 source reduction
  - 14 x DAW shipments ( 20 x 20' C Vans)
  - 3 x DAW shipment ( 6 blade guide boxes)
  - 4 x Trinuke filter (120 filters each) Type A cask shipments
  - 5 x Spent fuel racks shipments

Total Disposal in 2022

Class A 26,500 ft3: Class B/C 62ft3

- Radioactive Waste Shipments - Planned 2022
  - Dry Active Wastes (DAW)
  - Reactor Vessel Internals - Type A containers
  - Spent Resins & Tri Nuke Filters in Cask Shipments
  - 9 more Spent Fuel Racks
  - Building Demolition Debris

Sequence #1 Packaged SFP Rack Shipment via Connestoga & Step Deck Trailer



Sequence #2 ATS 215 Cask Shipment in Truck Lock & Departing Pilgrim Site