



Pilgrim NDCAP Update

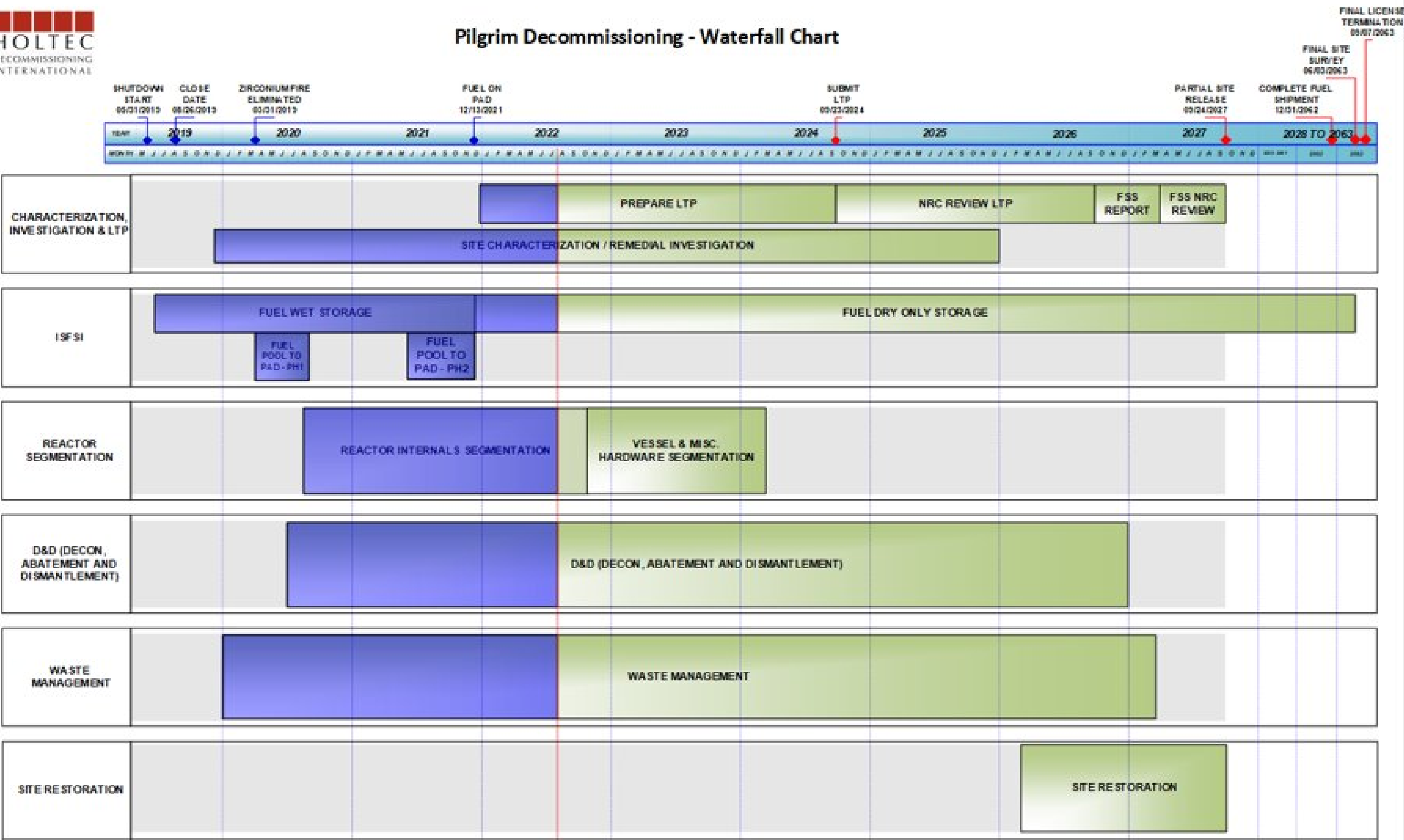


September 26, 2022

Draft Waterfall Chart

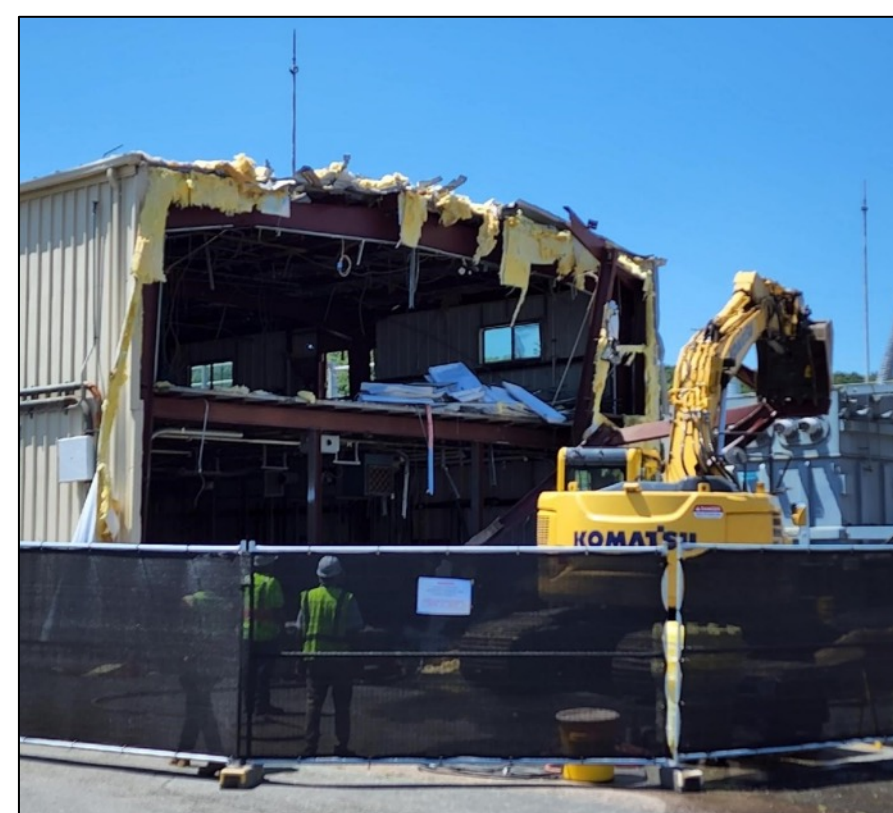


Pilgrim Decommissioning - Waterfall Chart



Demolition

- Two-Story Butler Building - Complete
- Admin Executive Building – Complete



Demolition

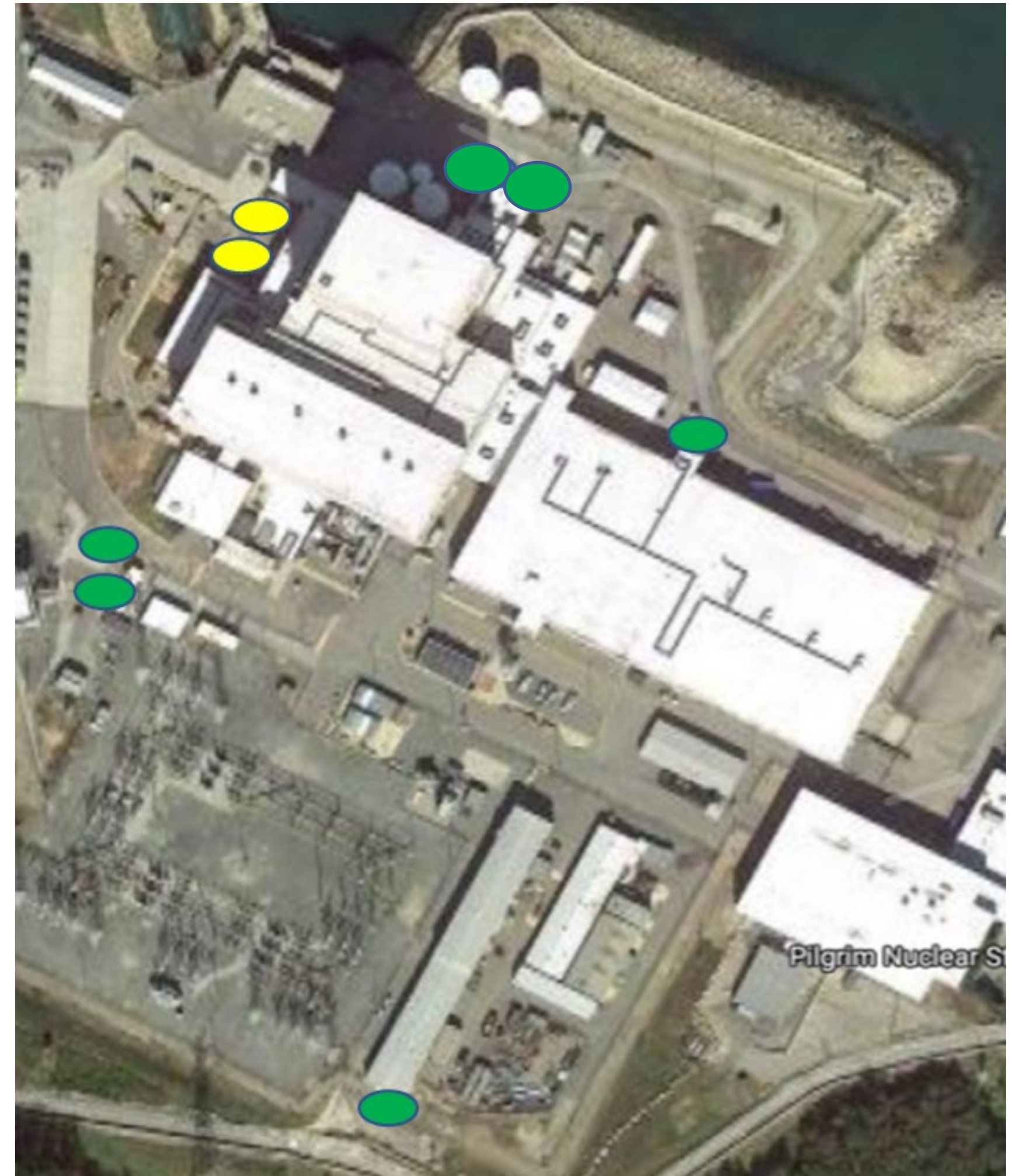
- Trash Compaction Facility
 - Disposition Survey & Decontamination – 8/19
 - Asbestos Containing Material Free
 - Interior Demolition 8/22-9/1
 - Structural Demolition 10/2-10/21



Demolition

- Underground storage tank removal
 - 6 of 8 Removed
 - Removal began Early July

	Removed
	To Remain



Demolition cont.

- More than 60% of outbuilding square footage has been demolished (**Red**)
- 2022 Demo upcoming (**Blue**)



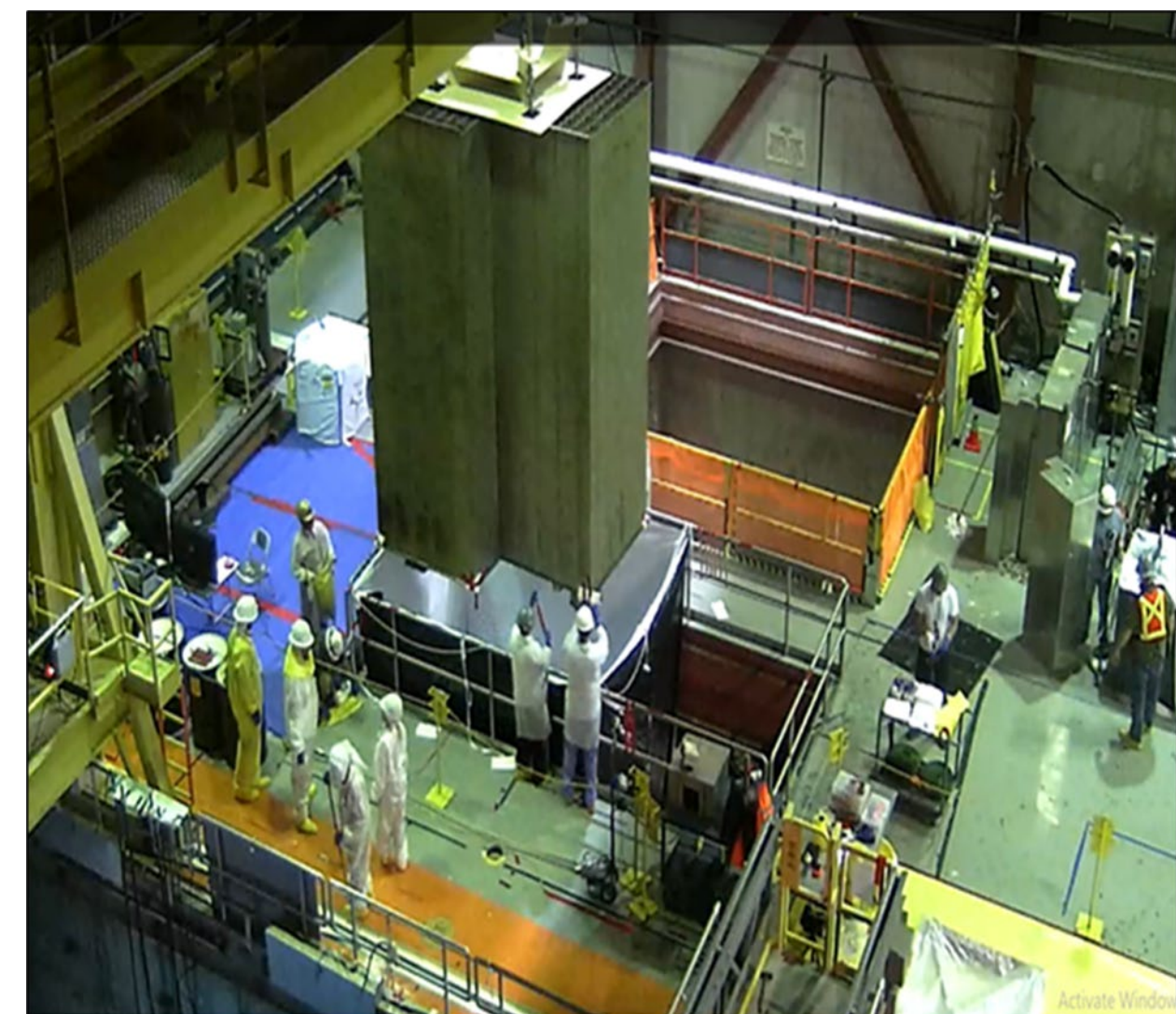
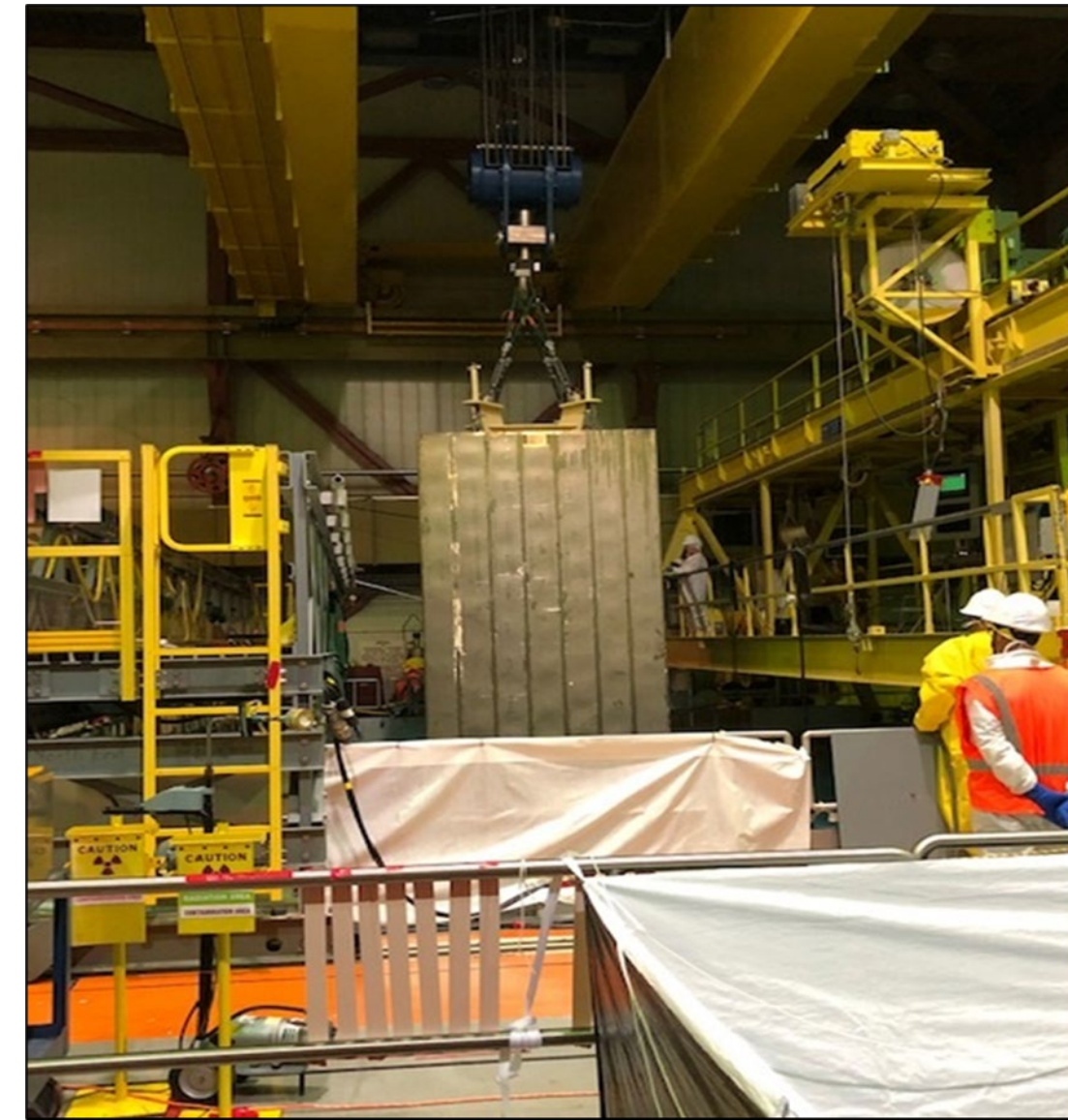
Restoration

- Haul Path Extension Restoration Complete – As part of Conservation Commission original approval for Haul Path Extension we were required to restore the path to prior condition within three years.



Fuel Pool Rack Removal

- 14 Of 14 Racks Have Been Removed From The Pool: N1, N2, N3, N4, N5, E1, E2, E3, E4, E5, E6, E7, E9
- 14 of the 14 Have Been Shipped



Reactor Segmentation

- 24 of 145 Control Rod Guide Tubes have been cut for packing and shipment – expected Completion 10/27

Upcoming:

- Fuel Support Castings – 10/5
- Control Rod Blades – 12/5
- Jet Pumps – 12/22
- Core Plate – 12/23



Practice Testing of Cutting Prior to Work in Building

Site Characterization

- Ongoing Radiological Characterization
 - Survey of existing abandoned slabs
 - Sampling of below grade material during storage tank removals

- Ongoing Non-Radiological Characterization
 - Completed assessment and generated ground water elevations and flows contour mapping
 - Developing PCB Release Abatement Measure (RAM) Plan for submittal to MassDEP

Regulatory Affairs

- Leaching Pit Removal Complete, Plantings per AG Agreement Installed
- Severity Level IV non-cited violation for radiological control measures during entry of an infrequently accessed area of the plant. This was entered into the corrective action program and process changes were implemented.

Water Management

- Share historic radionuclide concentrations in discharges in November
- Expect to share non-radiological sample results of onsite water storage in November

Pilgrim Update-Waste Management



■ Radioactive Waste Shipments – Completed in 2022 thru September 20th

Total Disposal in 2022 Class A ~68,435 ft³ Class B/C 62ft³

- 1 x CRDM Filter Shielded Container (Class C) Part 37 source reduction
- 16 x DAW shipments (24 x 20' C Vans)
- Dry well head (24 segments) packaged and shipped in 4 CVans (Complete)
- 3 x DAW shipment (6 blade guide boxes) (Complete)
- 7 x Trinuke filter (120 filters each) Type A cask shipments
- 9 x Spent fuel racks shipments (9/14 Complete)

■ Radioactive Waste Shipments - Planned remainder of 2022

- Dry Active Wastes (DAW)
- Reactor Vessel Internals - Type A containers
- Spent Resins & Tri Nuke Filters in Cask Shipments
- Building Demolition Debris