

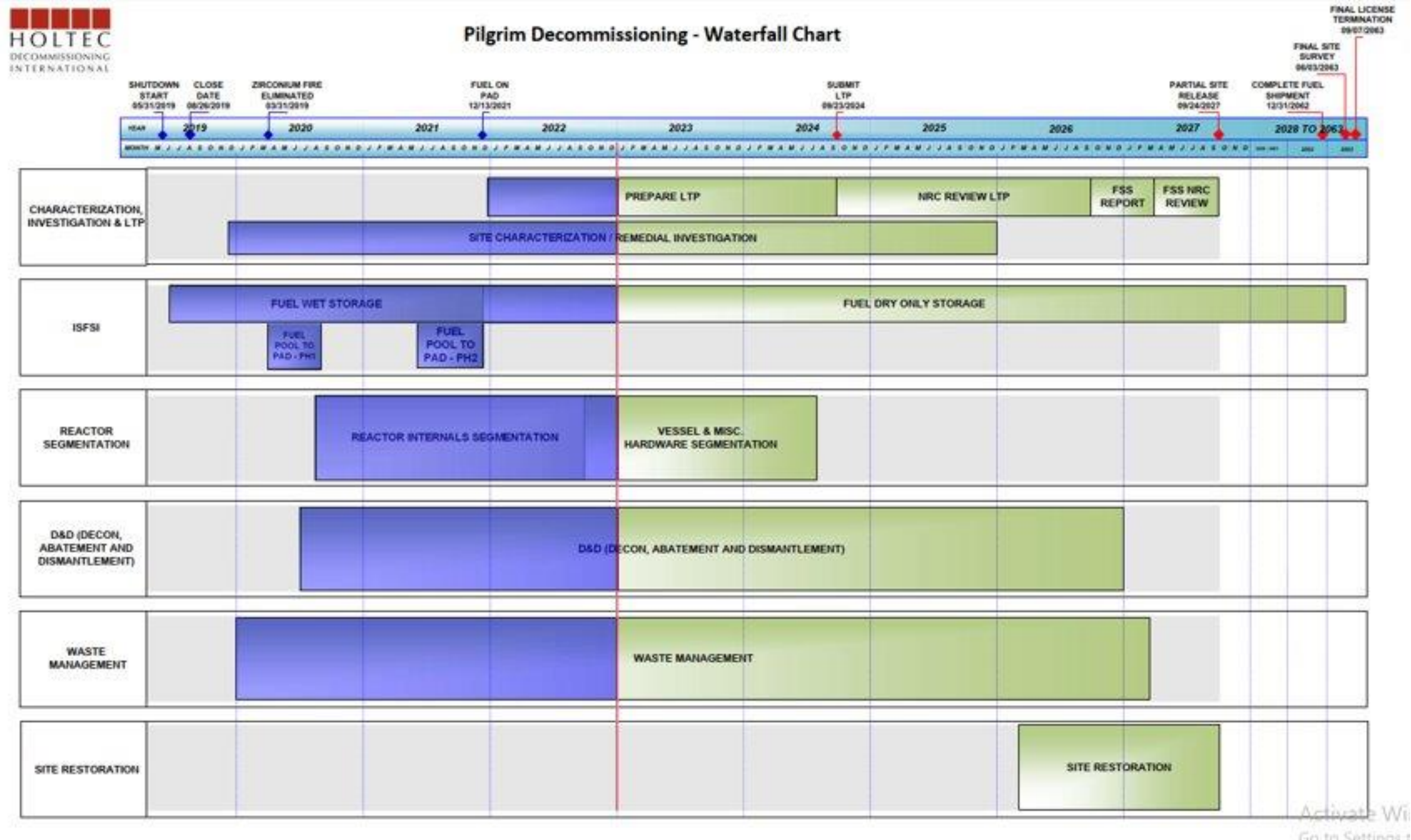


# Pilgrim NDCAP Update



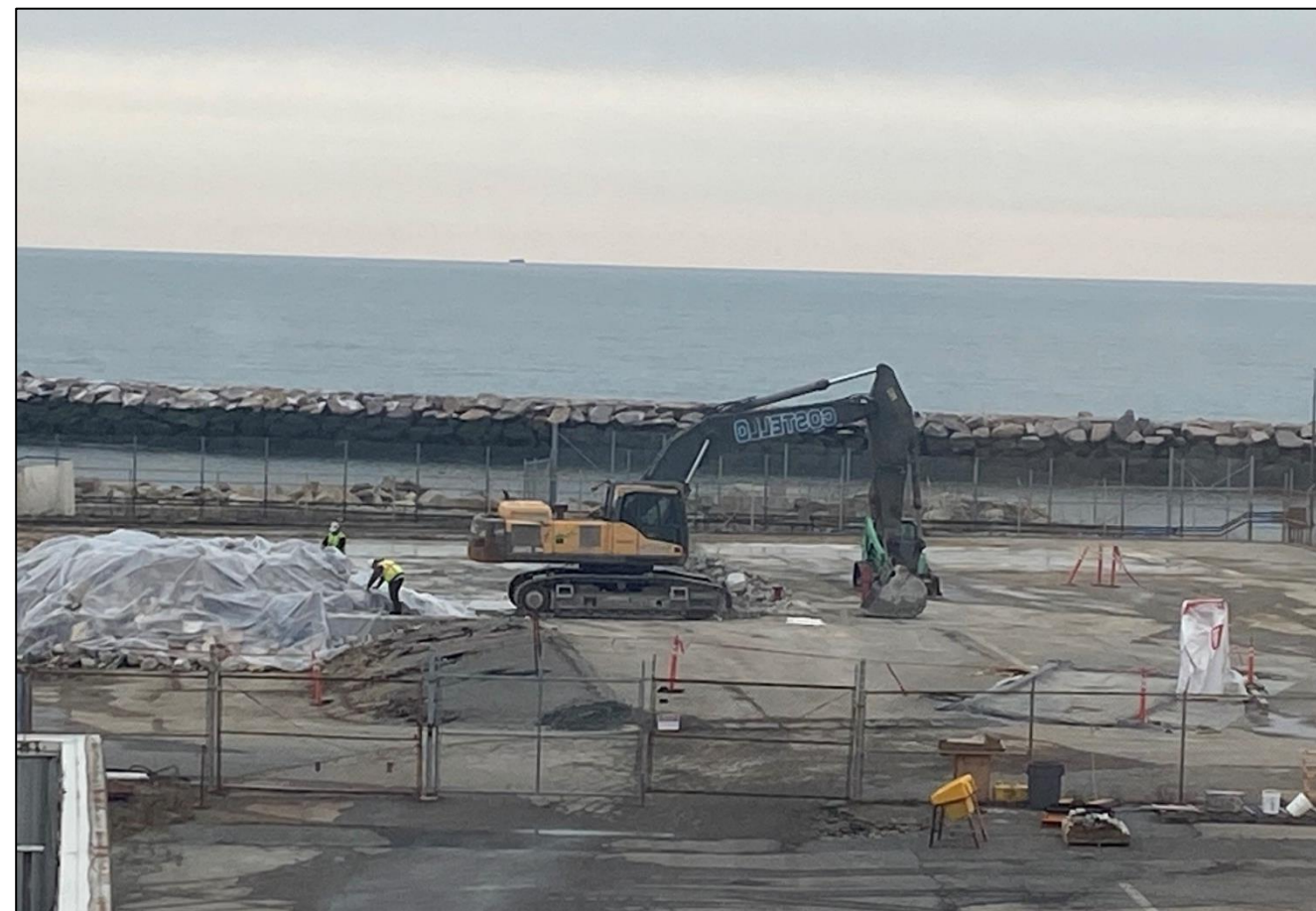
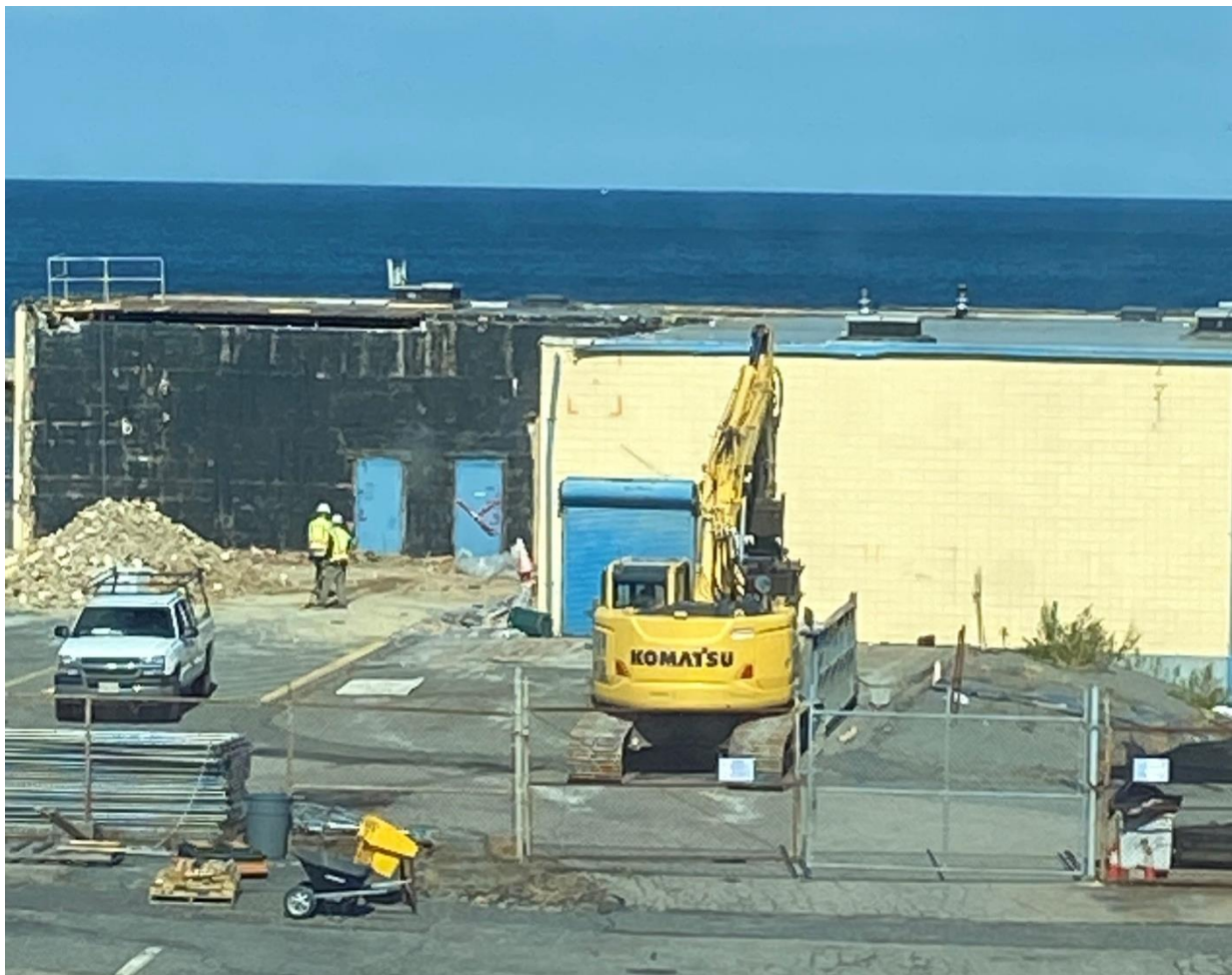
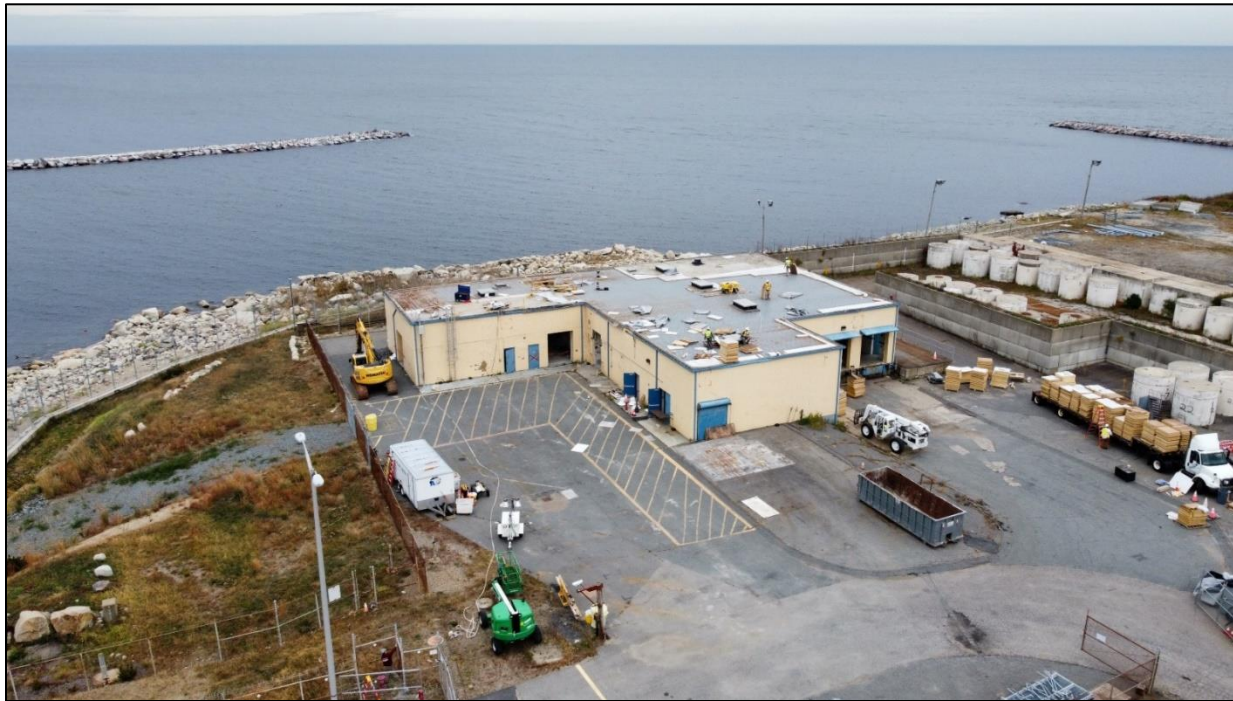
January 23, 2023

# Draft Waterfall Chart



# Demolition

- Trash Compaction Facility- Demolition Completed 1/19/23 Debris Removal Underway



# Demolition

## ■ Old Main Gate

Building Clear-out – Complete

Gapping – complete

Disposition Survey - complete

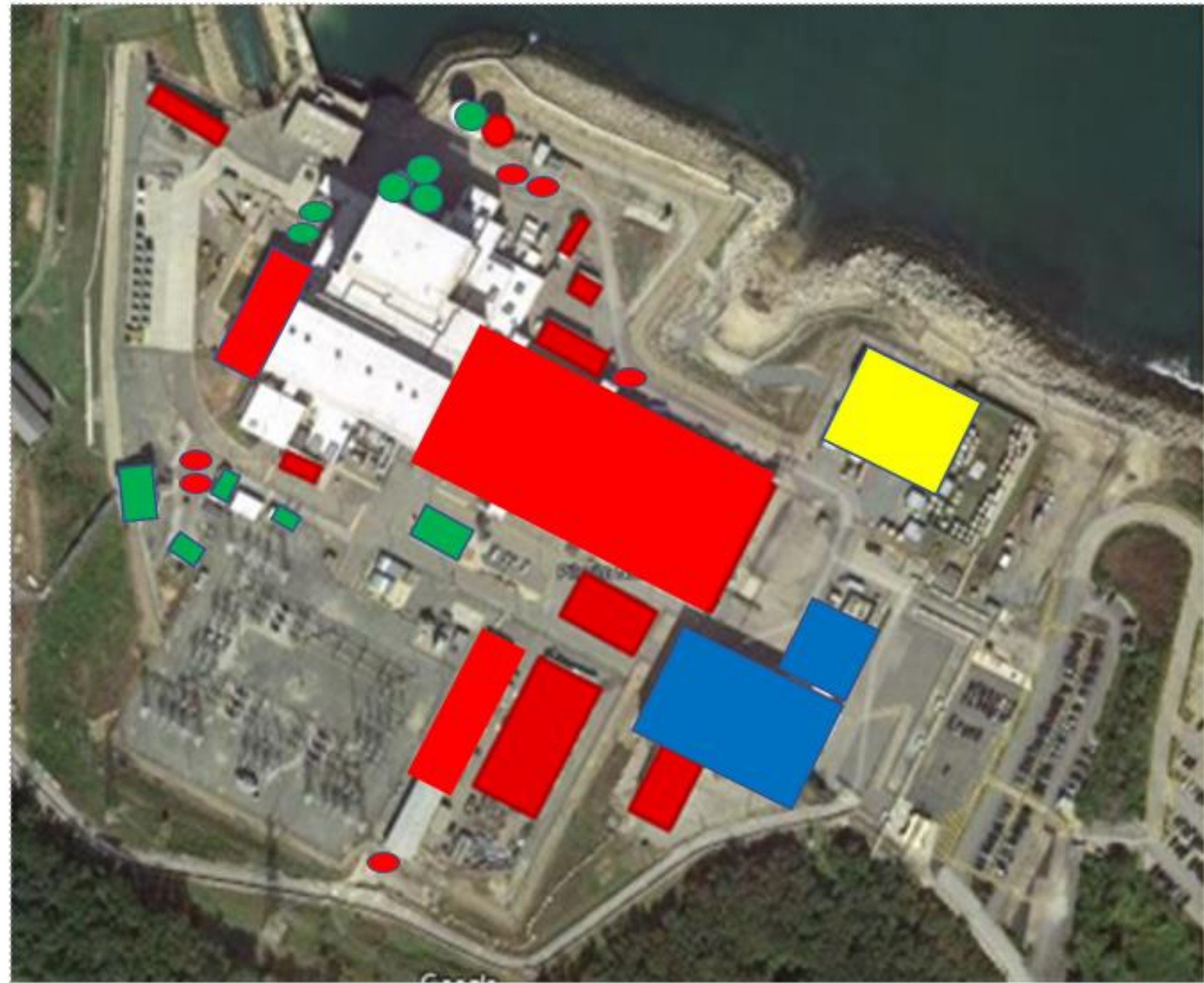
Abatement – Q1 2023

Structural Demolition - Q1 2023



# Demolition cont.

- More than 70% of outbuilding square footage has been demolished (**Red**)
- Active demolition activity (**Yellow**)
- 2023 Demo upcoming (**Green**)



# Reactor Segmentation

- Control Rod Blades – (78 of 173)  
Mid 1<sup>st</sup> quarter 2023
- Fuel Support Castings (130 of 145) – Mid 1<sup>st</sup> quarter 2023
- CRGT (108 of 147) – Mid 1<sup>st</sup> quarter 2023
- Core Plate – Late first quarter 2023
- Jet Pumps – 2<sup>nd</sup> quarter 2023



Raising a Control Rod Blade into position to crush for waste volume reduction

# Risk Reduction

## Hazard Elimination

- ✔ De-energized and removed electrical transformers
- ✔ Removed 16,000 gallons of lubricating oil
- ✔ Removed Hydrogen storage
- ✔ Removed Compressed Gas cylinders from industrial buildings and
- ✔ Emptied and demolished Gas Bottle Storage Facility
- ✔ Updated fire detection capability



Main Transformer Removal

# Environmental Impact Reduction

Strategic operation of saltwater cooling systems to eliminate chlorination

- Chemicals (sodium hypochlorite) used as a biofouling agent to maintain critical cooling system flow paths functional
- Idling cooling loops prevented water oxygenation and slowed blue mussel growth preventing the need to use chemical treatments



# Environmental Impact Reduction

Outfall Number	Description	Station Operating Configuration	Current Configuration
001	Circulating Water	Two pumps in once through cooling service, 310,000 GPM each, maximum temperature 102 °F, maximum differential temperature 32°F Water chlorinated to prevent condenser biofouling	Circulating water pumps secured Chlorination system secured
002	Main Condenser Thermal and Non-Thermal Backwash	One circulating water pump in service. 310,000 GPM Maximum Temperature 120°F	Circulating water pumps secured
004	Stormwater	Precipitation runoff	Precipitation runoff
005	Stormwater	Precipitation runoff	Precipitation runoff
006	Stormwater	Precipitation runoff	Precipitation runoff
007	Stormwater	Precipitation runoff	Precipitation runoff
010	Salt Service Water	1 thru 4 pumps in service dependent on heat loads Maximum temperature 102 °F, Maximum differential temperature 32°F Water chlorinated to prevent condenser biofouling	A single pump intermittently operated for equipment cooling Maximum temperature 90°F Maximum differential temperature 10°F Chlorination system secured
011	Heating System Pressure Relief Valve Discharge / Makeup Demineralizer Wash Water Divert	Subject to flow with either plant heating system or makeup demineralizer in service	Heating System relief valve being re-routed away from Outfall #11. Makeup Demineralizer Wash Water Divert eliminated
012	Screenwash Sluiceway to Discharge Canal	In conjunction with previous outfall #003, used to prevent fouling of screens due to debris loading and fish impingement	Screenwash pumps secured
013	Stormwater	Precipitation runoff	Precipitation runoff
014	Waste Neutralizing Sump	Used for draining nitrated water from Reactor and Turbine Building Closed Cooling Water and Standby Liquid Control Systems	Used solely to support system draining for maintenance activities

# Recycling and Waste Elimination

Control Rod Drive  
Hydraulic Control Unit Accumulators

## Radiological Material

- Trash Compactor
- Control Rod Drive Hydraulic Control Unit Accumulators
- Motor Operated Valves
- Noble Metals Injection Skid



Trash Compactor



# Recycling and Waste Elimination

## Non-radiological Material

Shipped 9.2 Million pounds of non-radiological waste with greater than 8.2 Million pounds to Recycle / Reuse



Removal and sale for reuse of  
250V DC and 1 train of 125V DC  
batteries



# Pilgrim Update-Waste Management

Radioactive Waste Shipments – Completed Thru Dec 30<sup>th</sup> via Transload facility (Mansfield, MA) and Highway shipments

Total Disposal Class A /Exempt 89,307 ft<sup>3</sup> Class B/C 62ft<sup>3</sup>



215 A Cask Shipment Riser Pipe 02(LSA-II)

# Water Management

- Continue to pursue modifications to NPDES and Surface Water Discharge Permits.  
Goal for permit submittal mid to late 1<sup>st</sup> quarter 2023.