



Holyoke Veterans' Home Access, Inclusion & Diversity Committee

Project Update

October 2025



DIVISION OF
CAPITAL ASSET
MANAGEMENT &
MAINTENANCE

Agenda

Project Updates

- Project/Schedule Update
- Work in Progress
- Project MBE/WBE Participation Plan
- Project VBE Participation Plan
- Business Participation Payment Report
- Workforce Hours Report
- Ongoing Outreach
- Questions



Phase 1 Milestone Schedule

Scope	Planned
Temp Weather Tight (Level 2-5)	2/21/2025
Temp Weather Tight (Level 2 & Above)	6/27/2025
Permanent Power Available	7/16/2025
Building Weather Tight	4/3/2026
MDFs and IDFs Turned over to Owner – group 1	1/8/2026
Owner's Network Availability	5/13/2026
Complete Fire Alarm Testing	6/30/2026
Start FF&E	6/8/2026
Certificate of Occupancy	9/3/2026
Phase 1 Substantial Completion	9/11/2026



Work in Progress – Overall Site



COMMODORE | WALSH
HOLYOKE JOINT VENTURE

Geofield scope including walkway and seeding continued



Masonry installation continues



COMMODORE | WALSH
HOLYOKE JOINT VENTURE

Timber curtainwall installation started



Retaining wall installation started



COMMODORE | WALSH
HOLYOKE JOINT VENTURE

Headwall installation ongoing at Level 2



Painting installation continues (Level 0 pictured below)



Flooring and tile installation continues



Tel Data Rooms installation continues

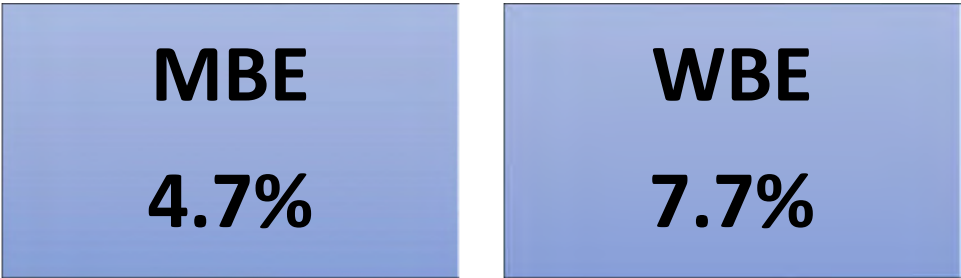


Project MBE/WBE Participation Plan

Total GMP
\$401,558,505

Contract Goals
MBE \$18,873,250
WBE \$30,920,005

Current Awards
MBE \$17,965,691
WBE \$33,754,195



Project VBE Participation Plan

Total GMP
\$401,558,505

Contract Goals
VBE \$12,046,755

VBE
3.0%

Current Awards
VBE \$15,197,900

VBE
3.8%



MBE Participation – Paid through DCMS August Audit 2025

Bid Package Description	Prime / Filed Sub		Current Subcontract Value	MBE Paid to Date	Percent to Full Subcontract	Percent to Goal
Prime Contracts						
Demolition & Abatement - Dorm & Chiller	American Environmental, Inc.		\$ 610,776.00	\$ 601,298.20	98.4%	0.1%
Demolition & Abatement - Main	<i>Not yet identified</i>		\$ -	\$ -	0.0%	0.0%
Roofing and Flashing	Titan Roofing, Inc.		\$ 3,383,129.00	\$ 1,698,295.01	50.2%	0.4%
Tier Packages (Trade-Description)	Tier Subcontractor					
Concrete Prime - Tier 2 Installation of Reinforcing	Regis Steel Corp		\$ 1,215,000.00	\$ 889,586.35	73.2%	0.2%
Structural Steel - Tier 3 Welding	Trident Production Welding		\$ 850,000.00	\$ 814,570.51	95.8%	0.2%
Fireproofing Prime - Tier 2 Labor for Carpentry Fireproofing Support	Triple J Drywall & Carpentry, Inc.		\$ 90,000.00	\$ 90,000.00	100.0%	0.0%
Drywall Prime - Tier 2 Furnishing Labor For Taping/Carpentry Support	Scorpions Contracting, Inc.		\$ 23,650.00	\$ 23,650.00	100.0%	100.0%
Drywall Prime - Tier 2 Furnishing Labor For Taping	American Finish Systems, Inc.		\$ 1,480,000.00	\$ 129,053.69	8.7%	8.7%
Acoustical Tile Prime - Tier 2 Furnishing Labor For Carpentry Support	Triple J Drywall & Carpentry, Inc.		\$ 72,000.00	\$ -	0.0%	0.0%
Food Service Equipment Prime - Tier 2 Sheetmetal installation	Titan Roofing, Inc.		\$ 100,000.00	\$ 29,519.74	29.5%	0.0%
Plumbing Prime - Tier 2 Furnish & Installation of Plumbing Insulation	Kim Industries, Inc.		\$ 1,116,000.00	\$ 265,050.00	23.8%	0.1%
HVAC Prime - Tier 2 Material and Field Labor	Kim Industries, Inc.		\$ 3,975,000.00	\$ 483,556.25	12.2%	0.1%
Electrical Prime - Tier 2 Furnish & Install Systems	KB-Mac, Inc.		\$ 3,032,664.00	\$ 2,623,824.00	86.5%	0.7%
Earthwork Prime - Tier 2 Trucking of Materials To & From the Site	C&C Contractors, LLC		\$ 1,162,000.00	\$ 882,838.75	76.0%	0.2%
Earthwork Prime - Tier 2 Installation of Reinforcing	Regis Steel Corp		\$ 100,000.00	\$ 46,511.15	46.5%	0.0%
Earthwork Prime - Tier 2 Furnish & Install Asphalt Paving	Don Martin Corp		\$ 300,000.00	\$ 369,437.57	123.1%	0.1%
Material Only (Prime Trade-Description)	Material Supplier	Current Subcontract Value	15% of Subcontract dollar value for credit			
Ceramic Tile Prime - Tier 2 Furnishing Materials	ST Materials & Equipment, LLC	\$ 150,000.00	\$ 22,500.00	\$ 38,276.86	170.1%	0.0%
Plumbing Prime - Tier 2 Furnish Only Plumbing Materials	JHP Industrial Supply Company, Inc.	\$ 986,483.00	\$ 147,972.45	\$ 155,412.51	105.0%	0.0%
HVAC Prime -Tier 2 Furnish Only HVAC Materials	Carl-Louis & Co., Inc.	\$ 900,000.00	\$ 135,000.00	\$ 71,515.88	53.0%	0.0%
Electrical Prime - Tier 2 Furnish Low Voltage Materials	Certified Connections, Inc.	\$ 1,000,000.00	\$ 150,000.00	\$ 108,639.60	72.4%	0.0%
					Percent to Full Subcontract	Percent to Projected Goal
			\$ 17,965,691.45	\$ 9,321,036.07	51.9%	2.3%
					Projected GOAL	4.5%



WBE Participation – Paid through DCMS August Audit 2025

Bid Package Description	Prime / Filed Sub		Current Subcontract Value	WBE Paid to Date	Percent to Full Subcontract	Percent to Goal
Prime Contracts						
Final Cleaning	Front Line, Inc.		\$ 701,550.00	\$ -	0.0%	0.0%
Doors, Frames, and Hardware	Thompson Company, Inc.		\$ 5,631,924.00	\$ 470,868.74	8.4%	0.1%
Carpet	Ayotte & King for Tile, Inc.		\$ 103,478.00	\$ 55,801.10	53.9%	0.0%
Window Treatments	Contexture		\$ 2,470,093.00	\$ 908,170.88	36.8%	0.2%
Resilient Flooring	Ayotte & King for Tile, Inc.		\$ 3,575,000.00	\$ 77,176.10	2.2%	0.0%
Tier Packages (Trade-Description)	Tier Subcontractor					
Concrete Prime - Tier 2 Furnishing Reinforcing	Rebars & Mesh, Inc.		\$ 1,400,000.00	\$ 1,249,686.50	89.3%	0.3%
Steel Prime - Tier 3 Install Shear Connectors	Composite Co., Inc.		\$ 187,610.00	\$ 162,992.60	86.9%	0.0%
Millwork Prime - Tier 2 Installation of Millwork	J. Thibert Architectural Woodwork Installation		\$ 1,924,092.00	\$ 15,999.00	0.8%	0.0%
Millwork Prime - Tier 2 Labor for loading of materials and clean up	Front Line, Inc.		\$ 937,500.00	\$ -	0.0%	0.0%
Drywall Prime - Tier 2 Labor For Carpentry Support	Adams and Ruxton Construction Company		\$ 725,000.00	\$ 295,289.33	40.7%	0.1%
Drywall Prime - Tier 2 Labor For Carpentry Support	Advanced Scaffold Services of N.E. LLC		\$ 39,250.00	\$ 28,386.36	72.3%	0.0%
Plumbing Prime - Tier 2 Furnish & Installation of Plumbing Materials	413 Plumbing & Heating, Inc.		\$ 1,620,000.00	\$ 522,696.62	32.3%	0.1%
HVAC Prime - Tier 2 Furnish & Installation of Sheetmetal Ductwork	L.K. Sheet Metal, Inc.		\$ 5,500,000.00	\$ 2,988,229.74	54.3%	0.7%
Electrical Prime - Tier 2 Furnish & Install Site Lighting	Chapman Construction Group, Inc.		\$ 1,308,394.00	\$ 1,308,394.00	100.0%	0.3%
Electrical Prime - Tier 2 Material and Install Gear and Lighting Package	Seaport Energy Co., Inc.		\$ 2,811,675.00	\$ 2,608,520.84	92.8%	0.6%
Earthwork Prime - Tier 2 Furnishing & Installing/ReloTemporary Site Fence	Guardrail Solutions, LLC		\$ 494,875.00	\$ 294,615.92	59.5%	0.1%
Earthwork Prime - Tier 2 Silt Fence, jute mesh & temp seeding	CSL, Inc.		\$ 142,038.00	\$ 128,664.20	90.6%	0.0%
Landscaping Prime - Tier 2 Labor and site clean up	Front Line, Inc.		\$ 900,000.00	\$ -	0.0%	0.0%
Material Only (Prime Trade-Description)	Material Supplier	Contract Value	15% of Subcontract dollar value for credit			
Masonry Prime - Tier 2 Furnish only masonry materials	Architectural Products, Inc.	\$ 195,607.00	\$ 29,341.05	\$ 12,676.03	43.2%	0.0%
Masonry Prime - Tier 2 Furnish only masonry materials	Della Supply, LLC	\$ 815,000.00	\$ 122,250.00	\$ 81,605.59	66.8%	0.0%
Steel Prime - Tier 3 Furnish only of Safety Screening System	Essential Perimeter	\$ 1,972,250.00	\$ 295,837.50	\$ 310,576.65	105.0%	0.1%
Curtain Wall, Windows & Panels Prime -Tier 2 Furnish Louvers & Vents	Architectural Products, Inc.	\$ 3,907,941.00	\$ 586,191.15	\$ 591,170.72	100.8%	0.1%
Painting Prime -Tier 2 Furnish Only Painting Supplies	Heritage Construction & Supply	\$ 156,059.00	\$ 23,408.85	\$ 253.89	1.1%	0.0%
HVAC Prime - Tier 2 Furnish Only Controls Material	Northeast Controls Panel Fabrication. Inc.	\$ 600,000.00	\$ 90,000.00	\$ 34,500.00	38.3%	0.0%
					Percent to Full Subcontract	Percent to Projected Goal
			\$ 32,045,460.55	\$ 12,621,922.27	39.4%	3.1%
					Projected GOAL	8.0%



VBE Participation – Paid through DCMS August Audit 2025

Bid Package Description	Prime / Filed Sub	Current Subcontract Value	VBE Paid toDate	Percent to Full Subcontract	Percent to Goal
Management	Commodore Builders	\$ 12,000,000.00	\$ 7,254,099.27	60.5%	1.8%
Prime - Waterproofing and Dampproofing	Superior Caulking & Waterproofing Co., Inc.	\$ 3,188,000.00	\$ 1,608,030.76	50.4%	0.4%
				Percent to Full Subcontract	Percent to Projected Goal
		\$ 15,188,000.00	\$ 8,862,130.03	58.3%	2.2%
				Projected GOAL	3.8%



Workforce Participation - *Percentages as of 10-05-2025

Goal	All Workers	Minority 15.3%	Women 6.9%	Veterans 7%
Reported Hours	533,494.47	151,871.06	54,168.83	48,379.25
% percent	N/A	28.47%	10.15%	9.07%

Goal	Apprentice 20%	**Minority, Women, Veteran Apprentices 40% of Apprentice Hours
Reported Hours	107,301.50	80,588.83
% percent	20.11%	More than 40%

Goal – 40% of Apprentice Hours	Minority Apprentices	**Women Apprentices	Veteran Apprentices	Minority & Women Apprentices
Reported Hours	44,285.25	31,204.25	5,099	10,285.75
% percent	41.27%	29.08%	4.75%	9.59%

** Includes women who are also part of a minority group.

* Percentages are based on hours reported in DCMS LCPtracker



COMMODORE | WALSH
HOLYOKE JOINT VENTURE

Workforce Participation as of 10/05/2025 (1 of 4)

					Apprentice Goal 20%		Minority Goal 15.3%	Women Goal 6.9%		Veteran Goal 7%		
Division	Description	Tier 1 Contractor	Tier 2 or 3 Contractor	Total Hours	Hours	%	Hours	%	Hours	%	Hours	%
Division 01	Scaffolding	BrandSafway Services LLC, Inc.		20,442.50	4,882.50	23.9%	10,795.50	52.8%	1,995.00	9.8%	583.50	2.9%
Division 01 & 06	Progress Cleaning/Rough Carp.	Charles Services & Equipment		19,283.50	5,298.00	27.5%	8,602.00	55.6%	2,670.00	13.9%	3,734.50	19.4%
Division 01 Final Cleaning		Front Line, Inc.		-	-	0.0%	-	0.0%	-	0.0%	-	0.0%
Division 03	Cast-In-Place Concrete	Manafort-Precision, LLC		34,259.00	4,572.50	13.3%	6,963.50	20.3%	2,340.00	6.8%	3,442.50	10.0%
Division 03	Concrete Reinforcing	Manafort-Precision, LLC	Regis Steel Corporation	8,785.00	1,467.00	16.7%	1,734.00	19.74%	1,800.00	20.5%	1,699.00	19.3%
Division 03	Cast-In-Place Concrete	Manafort-Precision + Tiers Aggregate		43,044.00	6,039.50	14.0%	8,697.50	20.2%	4,140.00	9.6%	5,141.50	11.9%
Division 04	Masonry	Capasso Enterprises Inc.		31,100.00	2,776.50	8.9%	12,729.50	40.9%	2,799.50	9.0%	3,068.00	9.9%
Division 05	Structural Steel	Les Constructions Beauce Atlas, Inc.		-	-	0.0%	-	-	-	-	-	0.0%
Division 05	Structural Steel	Les Constructions Beauce Atlas, Inc.	McGregor Industries Inc	1,176.00	-	0.0%	328.00	27.9%	328.00	27.9%	-	0.0%
Division 05	Structural Steel	Les Constructions Beauce Atlas, Inc.	Prime Steel Erecting, Inc.	50,974.00	10,849.50	21.3%	10,603.00	20.8%	2,782.50	5.5%	6,355.00	12.5%
Division 41	Cranes	Les Constructions Beauce Atlas, Inc. / Prime Steel Erecting, Inc.	Morrow Equipment Company, LLC	4,302.50	1,143.00	26.6%	-	0.0%	2,021.50	47.0%	-	0.0%
Division 05	Structural Steel	Les Constructions Beauce Atlas, Inc. / Prime Steel Erecting, Inc.	Composite Company, Inc.	1,021.00	136.00	13.3%	-	0.0%	-	0.0%	136.00	13.3%
Division 05	Structural Steel	Les Constructions Beauce Atlas, Inc. / Prime Steel Erecting, Inc.	Trident Production Welding, Inc.	6,111.00	-	0.0%	5,580.00	91.3%	-	0.0%	-	0.0%
Division 05	Structural Steel	Les Constructions Beauce Atlas + Tiers Aggregate		63,584.50	12,128.50	19.1%	16,511.00	26.0%	5,132.00	8.1%	6,491.00	10.2%
Division 05	Misc. Metals	Quinn Brothers of essex, Inc.		273.00	-	0.0%	83.00	30.4%	55.00	20.1%	55.00	20.1%
Division 05	Misc. Metals	Quinn Brothers of essex, Inc.	American Anchor	-	-	-	-	-	-	-	-	-
Division 05	Misc. Metals	Quinn Brothers of essex, Inc. American Anchor, Inc.	T&T Steel Erectors, Inc.	-	-	0.0%	-	0.0%	-	0.0%	-	0.0%
Division 05	Misc. Metals	Quinn Brothers of Essex + Tiers Aggregate		273.00	0.00	0.0%	83.00	30.4%	55.00	20.1%	55.00	20.1%
Division 06	Millwork	Millwork One, Inc.		-	-	0.0%	-	0.0%	-	0.0%	-	0.0%
Division 06	Millwork Installation	Millwork One, Inc.	J. Thibert Architectural Woodwork Installation	148.00	-	0.0%	-	0.0%	-	0.0%	-	0.0%
Division 01	Cleaning/Labor	Millwork One, Inc.	Front Line, Inc.	-	-	0.0%	-	0.0%	-	0.0%	-	0.0%
Division 06	Millwork	Millwork One, Inc. + Tiers Aggregate		148.00	0.00	0.0%	0.00	0.0%	0.00	0.0%	0.00	0.0%
Division 07	Fireproofing	H Carr & Sons, Inc		-	-	0.0%	-	-	-	-	-	0.0%
Division 07	Fireproofing	H Carr & Sons, Inc	Triple J Drywall and Carpentry, Inc.	659.50	510.00	77.3%	-	0.0%	40.00	6.1%	-	0.0%
Division 09	Acoustical Tile Ceilings	H Carr & Sons, Inc		6,215.00	89.00	1.4%	3,581.50	57.6%	104.00	1.7%	272.00	4.4%
Division 09	Acoustical Tile Ceilings	H Carr & Sons, Inc	Triple J Drywall and Carpentry, Inc.	-	-	0.0%	-	0.0%	-	0.0%	-	0.0%
Division 07/09	Fireproofing + ACT	H. Carr & Sons, Inc. + Tiers Aggregate		6,874.50	599.00	8.7%	3,581.50	52.1%	144.00	2.1%	272.00	4.0%
Division 07	Waterproofing and Dampproofing	Superior Caulking & Waterproofing Co., Inc.		6,195.50	-	0.0%	1,781.50	28.8%	-	0.0%	-	0.0%
Division 07	Roofing and Flashing	Titan Roofing, Inc.		5,600.75	1,773.50	31.7%	4,710.25	84.1%	46.50	83.0%	-	0.0%
Division 08	Specialty Doors	Alta Material Handling		-	-	0.0%	-	0.0%	-	0.0%	-	0.0%



Workforce Participation as of 10/05/2025 (2 of 4)

Division	Description	Tier 1 Contractor	Tier 2 or 3 Contractor	Total Hours	Apprentice Goal 20%		Minority Goal 15.3%		Women Goal 6.9%		Veteran Goal 7%	
					Hours	%	Hours	%	Hours	%	Hours	%
Division 08	Curtain Wall + Glass & Glazing	Chandler Architectural Products, Inc.		17,236.00	3,050.50	17.70%	5,020.00	29.13%	1,810.50	10.50%	5,311.50	30.82%
Division 08	Doors, Frames, and Hardware	Thompson Company Inc.		48.00	-	0.0%	-	0.0%	-	0.0%	-	0.0%
Division 08	Doors, Frames, and Hardware	Thompson Company Inc.	dormakaba USA LLC	-	-	0.0%	-	0.0%	-	0.0%	-	0.0%
Division 08	Doors, Frames, and Hardware	Thompson Co., Inc. + Tiers Aggregate		48.00	-	0.0%	-	0.0%	-	0.0%	-	0.0%
Division 09	Resinous Flooring	Allegheny Contract Flooring, Inc.		776.00	168.00	21.6%	356.00	45.9%	-	0.0%	-	0.0%
Division 09	Resilient Flooring & Carpet	Ayotte and King for Tile Inc.		511.00	84.00	16.4%	10.00	2.0%	-	0.0%	-	0.0%
Division 09	Tile	Select Tile, Marble & Flooring, LLC		1,869.00	156.00	8.3%	1,085.00	58.1%	332.00	17.8%	-	0.0%
Division 09	Terrazzo	Roman Mosaic and Tile Company		-	-	0.0%	-	0.0%	-	0.0%	-	0.0%
Division 09	Painting	John W. Egan Company Inc.		694.00	102.00	14.7%	-	0.0%	264.00	38.0%	-	0.0%
Division 09	Drywall	Professional Drywall Construction, Inc.		50,866.50	10,354.50	20.4%	24,026.50	47.2%	5,757.50	11.3%	4,127.50	8.1%
Division 09	Window Blocking/Clean Up	Professional Drywall Construction, Inc.	Adams & Ruxton Construction Co.	7,299.75	1,668.75	22.9%	2,870.25	39.3%	878.75	12.0%	1,251.50	17.1%
Division 09	Taping	Professional Drywall Construction, Inc.	Scorpions Contracting, Inc.	268.00	-	0.0%	224.00	83.6%	-	0.0%	-	0.0%
Division 09	Taping	Professional Drywall Construction, Inc.	American Finish Systems	2,601.50	-	0.0%	2,344.50	90.1%	-	0.0%	92.00	3.5%
Division 09	Taping	Professional Drywall Construction, Inc.	Connecticut Drywal Finishing	24.00	-	0.0%	-	0.0%	-	0.0%	-	0.0%
Division 09	Drywall/Insulation	Professional Drywall Construction, Inc.	Acoustical Thermal Insulators, Inc.	-	-	0.0%	-	0.0%	-	0.0%	-	0.0%
Division 01	Scaffolding	Professional Drywall Construction, Inc.	Advanced Scaffold Services of NE	156.00	8.00	5.1%	93.00	59.6%	-	0.0%	-	0.0%
Division 09	Drywall	Professional Drywall Construction, Inc. + Tiers Aggregate		61,215.75	12,031.25	19.7%	29,558.25	48.3%	6,636.25	10.8%	5,471.00	8.9%
Division 10	Specialties	Unified Specialty Services		-	-	0.0%	-	0.0%	-	0.0%	-	0.0%
Division 10	Signage	Design Communications		-	-	0.0%	-	0.0%	-	0.0%	-	0.0%
Division 11	Appliances/Food Service	Singer MA, LLC dba Singer Kittredge		121.25	-	0.0%	3.00	2.5%	-	0.0%	-	0.0%
Division 11	Appliances/Food Service	Singer MA, LLC dba Singer Kittredge	Titan Roofing, Inc.	28.00	14.00	50.0%	-	0.0%	-	0.0%	-	0.0%
Division 11	Appliances/Food Service	Singer + Tiers Aggregate		149.25	14.00	0.0%	3.00	2.0%	0.00	0.0%	0.00	0.0%
Division 12	Window Treatments	Contexture		141.25	-	0.0%	-	0.0%	-	0.0%	-	0.0%
Division 12	Window Treatments	Contexture	Collins Electric Co., Inc.	-	-	0.0%	-	0.0%	-	0.0%	-	0.0%
Division 12	Window Treatments	Contexture + Tiers Aggregate		141.25	0.00	0.0%	0.00	0.0%	0.00	0.0%	0.00	0.0%
Division 14	Electric Trolley Hoist	Mass Crane & Hoist		-	-	0.0%	-	0.0%	-	0.0%	-	0.0%
Division 14	Electric Trolley Hoist/Install	Mass Crane & Hoist	IPC Lydon	-	-	0.0%	-	0.0%	-	0.0%	-	0.0%
Division 14	Electric Trolley Hoist	Mass Crane + Tiers Aggregate		0.00	0.00	0.0%	0.00	0.0%	0.00	0.0%	0.00	0.0%
Division 14	Elevator	KONE		3,242.00	725.00	22.4%	651.50	20.1%	42.00	1.3%	182.50	5.6%



Workforce Participation as of 10/05/2025 (3 of 4)

Division	Description	Tier 1 Contractor	Tier 2 or 3 Contractor	Apprentice Goal 20%			Minority Goal 15.3%		Women Goal 6.9%		Veteran Goal 7%	
				Total Hours	Hours	%	Hours	%	Hours	%	Hours	%
Division 21	Fire Protection	Arden Engineering Constructors, LLC		-	-	0.0%	-	-	-	-	-	0.0%
Division 22	Plumbing	Arden Engineering Constructors, LLC		52,310.00	11,491.50	22.0%	4,964.50	9.49%	2,820.00	5.39%	3,724.50	7.1%
Division 22	Plumbing	Arden Engineering Constructors, LLC	413 Plumbing & Heating Inc.	1,187.50	431.00	36.3%	114.00	9.6%	-	0.0%	32.00	2.7%
Division 22	Plumbing	Arden Engineering Constructors, LLC	M.J.Daly LLC	2,335.50	-	0.0%	2,327.50	99.7%	-	0.0%	-	0.0%
Division 22	Plumbing Insulation	Arden Engineering Constructors, LLC	Kim Industries Inc	3,478.00	8.00	23.0%	1,049.00	30.2%	-	0.0%	-	0.0%
Division 21/22	Fire Protection + Plumbing	Arden Engineering Constructors, LLC + Tiers Aggregate		59,311.00	11,930.50	20.1%	8,455.00	14.3%	2,820.00	4.8%	3,756.50	6.3%
Division 23	HVAC	Harry Grodsky & Co., Inc.		29,679.00	6,855.00	23.1%	4,593.50	15.5%	1,987.00	6.7%	2,169.00	7.3%
Division 23	HVAC Sheetmetal Work	Harry Grodsky & Co., Inc.	LK Sheetmetal	25,056.50	8,010.00	32.0%	7,921.00	31.6%	4,745.50	18.9%	1,362.00	5.4%
Division 23	HVAC Insulation	Harry Grodsky & Co., Inc.	Kim Industries Inc	5,738.00	1,491.00	26.0%	1,520.00	26.5%	-	0.0%	-	0.0%
Division 07	Firestopping	Harry Grodsky & Co., Inc.	Barber Firestop Systems LLC	392.00	54.00	13.8%	-	0.0%	-	0.0%	-	0.0%
Division 41	Cranes	Harry Grodsky & Co., Inc.	Central Mass Crane Service Inc.	239.00	73.00	30.5%	-	0.0%	34.50	14.4%	-	0.0%
Division 23	HVAC	Harry Grodsky & Co., Inc.	Automated Logic Contracting Services	313.00	-	0.0%	-	0.0%	-	0.0%	-	0.0%
Division 23	HVAC	Harry Grodsky & Co., Inc. / Automated Logic Contracting Services	William Roberts Electric Co., Inc	5,368.75	1,610.25	30.0%	1,344.00	25.0%	233.25	4.3%	-	0.0%
Division 23	HVAC	Harry Grodsky & Co., Inc. + Tiers Aggregate		66,786.25	18,093.25	27.1%	15,378.50	23.0%	7,000.25	10.5%	3,531.00	5.3%
Division 26	Electrical / Low Voltage	Collins Electric Co., Inc.		53,379.25	15,350.50	28.8%	10,765.00	20.2%	9,497.25	17.8%	6,566.75	12.3%
Division 26	Electrical / Low Voltage	Collins Electric Co., Inc.	Chapman Construction Group, Inc.	8.00	-	0.0%	-	0.0%	-	0.0%	-	0.0%
Division 26	Electrical / Low Voltage	Collins Electric Co., Inc.	Seaport Energy Co., Inc.	48.00	-	0.0%	-	0.0%	-	0.0%	-	0.0%
Division 26	Electrical / Low Voltage	Collins Electric Co., Inc.	KB-Mac, Inc.	-	-	0.0%	-	0.0%	-	0.0%	-	0.0%
Division 26	Electrical / Low Voltage	Collins Electric Co., Inc. + Tiers Aggregate		53,435.25	15,350.50	28.7%	10,765.00	20.1%	9,497.25	17.8%	6,566.75	12.3%
Division 31	Earthwork	Northern Construction Service, LLC		860.50	-	0.0%	-	0.0%	263.00	30.6%	3.50	0.4%
Division 31	Earthwork	Northern Construction Service, LLC	Northern General Contractors, Inc.	49,667.00	10,978.50	22.1%	8,796.00	17.7%	3,805.00	7.7%	3,288.50	6.6%
Division 31	Earthwork	Northern Construction Service, LLC	Northern Land Clearance LLC	332.50	-	0.0%	-	0.0%	-	0.0%	-	0.0%
Division 03	Concrete cutting	Northern Construction Service, LLC	Ace Concrete Cutting, LLC	4.00	-	0.0%	-	0.0%	-	0.0%	-	0.0%
Division 31	Erosion and sediment control	Northern Construction Service, LLC	CSL, Inc.	376.00	-	0.0%	108.00	28.7%	-	0.0%	-	0.0%
Division 01	Fence and gates	Northern Construction Service, LLC	Guardrail Solutions LLC	938.00	-	0.0%	332.50	35.4%	-	0.0%	47.50	5.1%
Division 31	Earthwork	Northern Construction Service, LLC	Keller North America	4,239.00	704.50	16.6%	179.00	4.2%	-	0.0%	281.00	6.6%
Division 32	Asphalt Paving	Northern Construction Service, LLC	Don Martin Corporation	95.00	-	0.0%	38.00	40.0%	-	0.0%	19.00	20.0%
Division 32	Asphalt Paving	Northern Construction Service, LLC	Palmer Paving Corporation	-	-	0.0%	-	0.0%	-	0.0%	-	0.0%
Division 03	Concrete Reinforcing	Northern Construction Service, LLC	Regis Steel Corporation	369.00	48.00	13.0%	86.00	23.3%	161.00	43.6%	51.00	13.8%
Division 31	Geothermal	Northern Construction Service, LLC	Skillings & Sons, Inc.	2,206.25	-	0.0%	416.25	18.9%	-	0.0%	344.00	15.6%



Workforce Participation as of 10/05/2025 (4 of 4)

Division	Description	Tier 1 Contractor	Tier 2 or 3 Contractor	Total Hours	Apprentice Goal 20%		Minority Goal 15.3%		Women Goal 6.9%		Veteran Goal 7%	
					Hours	%	Hours	%	Hours	%	Hours	%
Division 31	Geothermal	Northern Construction Service, LLC / Skillings & Sons, Inc.	Ground Source Drilling LLC	136.00	-	0.0%	-	0.0%	-	0.0%	-	0.0%
Division 31	Geothermal	Northern Construction Service, LLC / Skillings & Sons, Inc.	Wragg Well Company LLC	319.00	-	0.0%	-	0.0%	-	0.0%	-	0.0%
Division 31	Earthwork	Northern Construction Service, LLC + Tiers Aggregate		59,542.25	11,731.00	19.7%	9,955.75	16.7%	4,229.00	7.1%	4,034.50	6.8%
Division 32	Landscaping	Brightview Landscape		1,389.91	-	0.0%	280.28	20.2%	278.08	20.0%	-	0.0%
Division 32	Landscaping	Brightview Landscape	Front Line, Inc.	-	-	0.0%	-	0.0%	-	0.0%	-	0.0%
Division 32	Landscaping	Brightview + Tiers Aggregate		1,389.91	0.00	0.0%	280.28	20.2%	278.08	20.0%	0.00	0.0%
Division 41	Cranes	Marr Crane & Rigging		5,715.00	-	0.0%	2,134.50	37.3%	3,441.50	60.2%	-	0.0%
				533,493.47	107,301.50	20.1%	151,871.06	28.5%	54,168.83	10.2%	48,379.25	9.1%



Apprentice Workforce Participation as of 10/05/2025 (1 of 2)

Tier 1 Contractor																	
Tier 2 Contractor			Apprentice 20% Goal			Minority			Women			Veteran			Minority & Women		
Tier 3 Contractor			Hours	Count	%	Hours	Count	%	Hours	Count	%	Hours	Count	%			
Arden Engineering Constructors, LLC			11,491.50	16	22.0%	840.5	4	7.3%	1,952.50	2	17.0%	255.50	1	2.2%	0.00	0	0.0%
413 Plumbing & Heating Inc.			431.00	3	36.3%	0	0	0.0%	-	0	0.0%	0.00	0	0.0%	0.00	0	0.0%
Allegheny Contract Flooring, Inc.			168.00	1	21.7%	0	0	0.0%	-	0	0.0%	0.00	0	0.0%	0.00	0	0.0%
Ayotte and King for Tile Inc.			84.00	2	16.4%	10	1	11.9%	-	0	0.0%	0.00	0	0.0%	0.00	0	0.0%
B-G Mechanical Contractors, Inc.			303.00	1	30.0%	0.2	0	0.0%	-	0	0.0%	0.00	0	0.0%	0.00	0	0.0%
BrandSafway Services LLC, Inc.			4,882.50	4	23.9%	3572.5	2	73.2%	1,995.00	1	40.9%	0.00	0	0.0%	1,995.00	1	40.9%
Capasso Enterprises Inc.			2,776.50	4	8.9%	1220.5	2	44.0%	567.00	2	20.4%	0.00	0	0.0%	129.50	1	4.7%
Chandler Architectural Products, Inc.			3,050.50	7	17.7%	544	1	17.8%	1,089.00	3	35.7%	1,444.00	1	47.3%	544.00	1	17.8%
Charles Services & Equipment			5,298.00	4	27.5%	5298	4	100.0%	2,102.00	2	39.7%	0.00	0	0.0%	2,102.00	2	39.7%
Collins Electric Co., Inc.			15,350.50	33	28.8%	5708.5	9	37.2%	6,005.25	4	39.1%	1,413.00	2	9.2%	0.00	0	0.0%
Edward F. Corcoran Plumbing & Heating			48.00	1	32.0%	0.2	0	0.0%	-	0	0.0%	0.00	0	0.0%	0.00	0	0.0%
H Carr & Sons, Inc			89.00	2	3.1%	0	0	0.0%	-	0	0.0%	0.00	0	0.0%	0.00	0	0.0%
Triple J Drywall and Carpentry, Inc.			510.00	1	77.3%	0	0	0.0%	-	0	0.0%	0.00	0	0.0%	0.00	0	0.0%
Harry Grodsky & Co., Inc.			6,855.00	5	23.1%	2577.5	1	37.6%	1,987.00	1	29.0%	0.00	0	0.0%	0.00	0	0.0%
Kim Industries Inc			1,499.00	5	16.3%	40	2	2.7%	-	0	0.0%	0.00	0	0.0%	0.00	0	0.0%
LK Sheetmetal			8,010.00	10	32.0%	2193	3	27.4%	3,332.50	3	41.6%	0.00	0	0.0%	0.00	0	0.0%
Todd Barber dba Barber Firestop Systems LLC			54.00	1	13.8%	0	0	0.0%	-	0	0.0%	0.00	0	0.0%	0.00	0	0.0%
William Roberts Electric Co., Inc			1,610.25	3	30.0%	1344	1	83.5%	233.25	1	14.5%	0.00	0	0.0%	0.00	0	0.0%
Central Mass Crane Service Inc.			73.00	1	30.5%	0	0	0.0%	-	0	0.0%	0.00	0	0.0%	0.00	0	0.0%



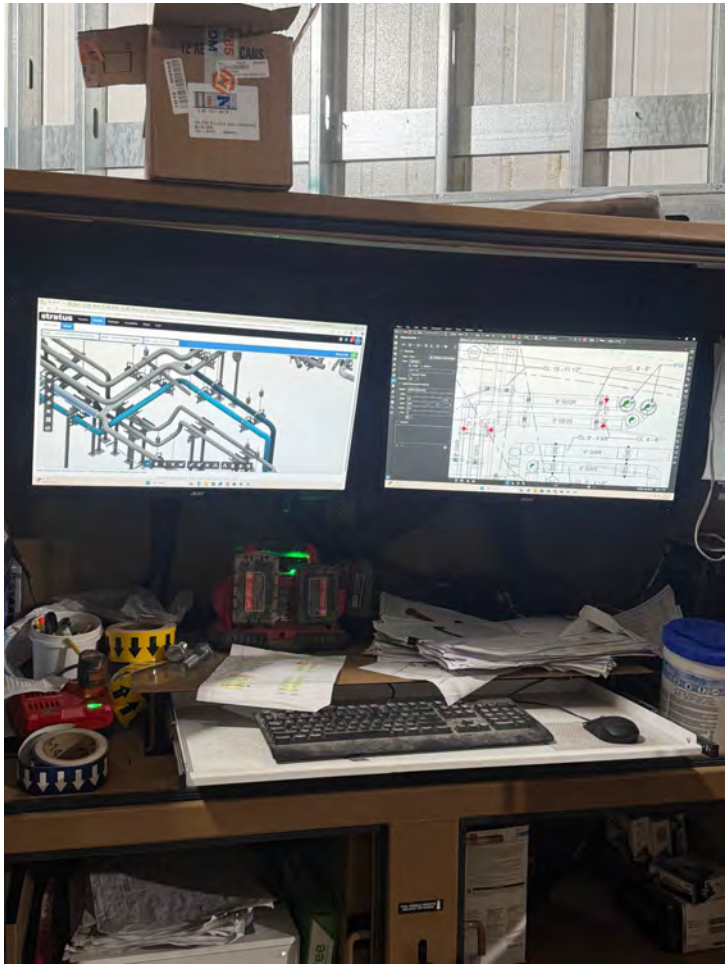
Apprentice Workforce Participation as of 10/05/2025 (2 of 2)

Tier 1 Contractor															
Tier 2 Contractor	Apprentice 20% Goal			Minority			Women			Veteran			Minority & Women		
	Hours	Count	%	Hours	Count	%	Hours	Count	%	Hours	Count	%	Hours	Count	%
John W. Egan Company Inc.	102.00	1	38.9%	0	0	0.0%	-	0	0.0%	0.00	0	0.0%	0.00	0	0.0%
KONE, Inc.	725.00	5	22.4%	498.5	2	68.8%	10.00	1	1.4%	182.50	1	25.2%	10.00	1	1.4%
Les Constructions Beauce-Atlas, Inc.															
Prime Steel Erecting, Inc.	10,849.50	16	21.3%	2299.5	6	21.2%	1,239.50	3	11.4%	1,154.00	2	10.6%	277.50	1	2.6%
Composite Company, Inc.	136.00	1	13.3%	0	0	0.0%	-	0	0.0%	136.00	1	100.0%	0.00	0	0.0%
Morrow Equipment Company, LLC	1,143.00	2	26.6%	0	0	0.0%	1,112.00	1	97.3%	0.00	0	0.0%	0.00	0	0.0%
Manafort-Precision, LLC	4,572.50	9	14.0%	2329	4	50.9%	2,340.00	4	51.2%	78.00	1	1.7%	1,702.00	1	37.2%
Regis Steel Corporation	1,467.00	6	17.1%	606	2	41.3%	559.00	2	38.1%	429.00	1	29.2%	409.00	1	27.9%
Moran Sheet Metal, Inc.	7.00	1	54.0%	0.2	0	0.0%	-	0	0.0%	0.00	0	0.0%	0.00	0	0.0%
Northern General Contractors, Inc.	10,978.50	13	22.3%	7396	7	67.4%	2,870.00	3	26.1%	0.00	0	0.0%	1,315.00	1	12.0%
Keller North America	704.50	2	17.0%	0	0	0.0%	-	0	0.0%	0.00	0	0.0%	0.00	0	0.0%
Regis Steel Corporation	48.00	6		25	2	52.1%	25.00	2	52.1%	7.00	1	14.6%	22.00	1	28.6%
Power Line Contractors, Inc.	10.00	1	1.0%	0.2	0	0.0%	-	0	0.0%	0.00	0	0.0%	0.00	0	0.0%
Professional Drywall Construction, Inc.	10,354.50	14	20.4%	5014.5	6	48.4%	2,742.00	3	26.5%	0.00	0	0.0%	745.00	1	7.2%
Advanced Scaffold Services of NE	8.00	1	5.1%	8	1	100.0%	-	0	0.0%	0.00	0	0.0%	0.00	0	0.0%
Adams & Ruxton Construction Company	1,668.75	3	22.9%	878.75	1	52.7%	878.75	1	52.7%	0.00	0	0.0%	878.75	1	52.7%
Select Tile, Marble & Flooring, LLC	156.00	1	8.4%	156	1	100.0%	156.00	1	100.0%	0.00	0	0.0%	156.00	1	100.0%
Titan Roofing, Inc.	1,787.50	11	31.8%	1725.5	7	96.5%	8.50	1	0.5%	0.00	0	0.0%	0.00	0	0.0%
Total for Project (Chiller & Main):	107,301.50	192	20.1%	44,285	67	41.3%	31,204.25	39	29.1%	5,099.00	10	4.8%	10,285.75	13	9.6%





October 3
Smith Vocational School - Plumbing



October 9

Dean Vocational Tech HS – Fall Career Fair



October 16

Franklin County Tech Carpentry Class

October 30

Franklin County Technical Electrical Class

November 6

Dean Tech Carpentry

November 13

Franklin County Technical Electrical Class

December 6

Franklin County Tech Carpentry Class



Outreach: AGC MA Supplier Diversity Summit – Oct 14 - 2025



COMMODORE | WALSH
HOLYOKE JOINT VENTURE



SPONSORSHIP TIERS

<p>CREW LEADER DUAL SPONSOR FOR EASTERN <u>AND</u> WESTERN MA CONFERENCE & CAREER FAIRS \$4,000</p>	<p>JOURNEYPERSON SPONSOR FOR EASTERN <u>OR</u> WESTERN MA CONFERENCE & CAREER FAIR \$2,500</p>
<p>APPRENTICE SPONSORSHIP FOR EASTERN <u>OR</u> WESTERN MA CONFERENCE & CAREER FAIR \$1,500</p>	<p>CO-OP SPONSORSHIP FOR EASTERN <u>OR</u> WESTERN MA CONFERENCE & CAREER FAIR \$1,000</p>
<p>EXPLORATORY SPONSORSHIP FOR EASTERN <u>OR</u> WESTERN MA CONFERENCE & CAREER FAIR \$500</p>	

***BOOTH REGISTRATION
INCLUDED WITH ALL
LEVELS OF SPONSORSHIP.
SPONSORS DO NOT NEED
TO REGISTER FOR
BOOTH SEPARATELY.**



**VISIT OUR WEBSITE FOR
MORE INFORMATION:
MASSGIRLSINTRADES.ORG**

**PLEASE MAKE CHECKS PAYABLE TO:
BUILDING PATHWAYS, C/O MA GIT,
PO BOX 190900,
ROXBURY, MA 02119**

**OR CONTACT SARAH ADAMS WITH
QUESTIONS:
SADAMS.MASSGIT@GMAIL.COM
(774)708-0703**

Outreach: Upcoming Events 10/28

Save the date!

Tuesday, October 28, 2025

Roxbury Community College – Student Commons in Academic Building 3

You are invited to the

2025 Designer Connection Event for Public Projects

This event will bring together prime firms, subconsultants, SDO-certified firms, and emerging and small firms to build new partnerships for public building projects. Our goal is to help you connect with future collaborators, strengthen proposals, and expand opportunities for meaningful partnerships in state projects.

Register by Oct 21, 2025 [Designer Connection Event Registration & Firm Profile | Mass.gov](#)

Agenda

- 8:30-9:00 AM | Check-in, Light Breakfast & Mingling
- 9:00-9:45 AM | Welcome, Orientation, & Keynote
- 9:50-11:30 AM | Structured Round Tables (3 rounds) - Meet new firms each round
- 11:30-12:00 PM | Freeform Networking + Topical Tables
- 12:15-12:45 PM | Closing Remarks + Spotlight Intros + Next Steps

Contact info:

Simone A. Early, Executive Director, Designer Selection Board
Simone.A.Early@mass.gov

Meghan Costa, Supplier Diversity Office
Meghan.Costa@mass.gov

Hakim Cunningham, Compliance Officer, DCAMM
Hakim.Cunningham@mass.gov

Edward "Tony" Ransom, Dep. Dir. For Energy, DCAMM
Edward.Ransom@mass.gov



COMMODORE | WALSH
HOLYOKE JOINT VENTURE

Questions

