



# Holyoke Veterans' Home Access, Inclusion & Diversity Committee

## Project Update

December 2025



DIVISION OF  
CAPITAL ASSET  
MANAGEMENT &  
MAINTENANCE



# Agenda

---

## Project Updates

- Project/Schedule Update
- Work in Progress
- Project MBE/WBE Participation Plan
- Project VBE Participation Plan
- Business Participation Payment Report
- Workforce Hours Report
- Ongoing Outreach
- Questions



# Phase 1 Milestone Schedule

---

Scope	Planned
Temp Weather Tight (Level 2-5)	2/21/2025
Temp Weather Tight (Level 2 & Above)	6/27/2025
Permanent Power Available	7/16/2025
Building Weather Tight	4/3/2026
MDFs and IDF's Turned over to Owner – group 1	1/8/2026
Owner's Network Availability	5/13/2026
Complete Fire Alarm Testing	6/30/2026
Start FF&E	6/8/2026
Certificate of Occupancy	9/3/2026
Phase 1 Substantial Completion	9/11/2026



# Work in Progress – Overall Site





# Natural stone retaining walls installation ongoing



**COMMODORE | WALSH**  
HOLYOKE JOINT VENTURE



# Masonry installation substantially completed



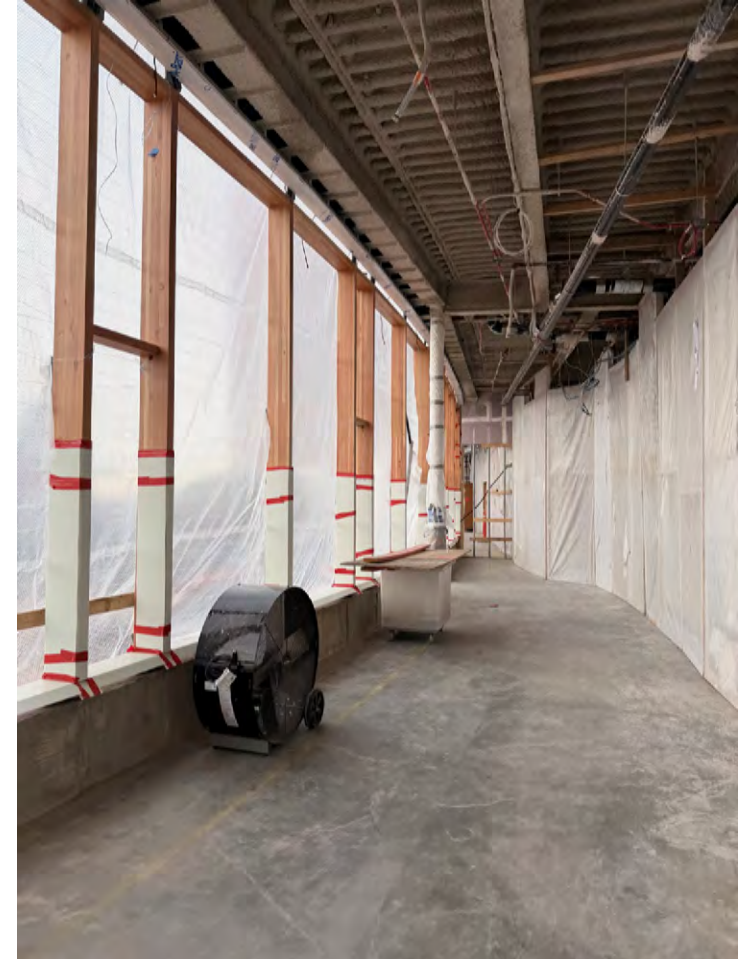
**COMMODORE | WALSH**  
HOLYOKE JOINT VENTURE

# Louvers at West were installed





# Curtainwall installation continued





# Drywall and finishes installation continues



**COMMODORE | WALSH**  
HOLYOKE JOINT VENTURE



# Millwork installation continues



**COMMODORE | WALSH**  
HOLYOKE JOINT VENTURE



# IT Rooms installation continues



# Project MBE/WBE Participation Plan

**Total GMP**  
**\$401,558,505**

**Contract Goals**  
MBE \$18,873,250  
WBE \$30,920,005

**Current Awards**  
MBE \$17,965,691  
WBE \$33,754,195





# Project VBE Participation Plan

---

**Total GMP**  
**\$401,558,505**

**Contract Goals**  
VBE    \$12,046,755

**VBE**  
**3.0%**

**Current Awards**  
VBE    \$15,197,900

**VBE**  
**3.8%**



# MBE Participation – Paid through DCMS October Audit 2025

Bid Package Description	Prime / Filed Sub		Current Subcontract Value	MBE Paid to Date	Percent to Full Subcontract	Percent to Goal
Prime Contracts						
Demolition & Abatement - Dorm & Chiller	American Environmental, Inc.		\$ 610,776.00	\$ 601,298.20	98.4%	0.1%
Demolition & Abatement - Main	Not yet identified		\$ -	\$ -	0.0%	0.0%
Roofing and Flashing	Titan Roofing, Inc.		\$ 3,383,129.00	\$ 1,885,410.54	55.7%	0.5%
Tier Packages (Trade-Description)	Tier Subcontractor					
Concrete Prime - Tier 2 Installation of Reinforcing	Regis Steel Corp		\$ 1,215,000.00	\$ 912,996.62	75.1%	0.2%
Structural Steel - Tier 3 Welding	Trident Production Welding		\$ 850,000.00	\$ 814,570.51	95.8%	0.2%
Fireproofing Prime - Tier 2 Labor for Carpentry Fireproofing Support	Triple J Drywall & Carpentry, Inc.		\$ 90,000.00	\$ 90,000.00	100.0%	0.0%
Drywall Prime - Tier 2 Furnishing Labor For Taping/Carpentry Support	Scorpions Contracting, Inc.		\$ 23,650.00	\$ 23,650.00	100.0%	100.0%
Drywall Prime - Tier 2 Furnishing Labor For Taping	American Finish Systems, Inc.		\$ 1,480,000.00	\$ 280,710.36	19.0%	19.0%
Acoustical Tile Prime - Tier 2 Furnishing Labor For Carpentry Support	Triple J Drywall & Carpentry, Inc.		\$ 72,000.00	\$ -	0.0%	0.0%
Food Service Equipment Prime - Tier 2 Sheetmetal installation	Titan Roofing, Inc.		\$ 100,000.00	\$ 29,519.74	29.5%	0.0%
Plumbing Prime - Tier 2 Furnish & Installation of Plumbing Insulation	Kim Industries, Inc.		\$ 1,116,000.00	\$ 445,930.00	40.0%	0.1%
HVAC Prime - Tier 2 Material and Field Labor	Kim Industries, Inc.		\$ 3,975,000.00	\$ 1,119,624.00	28.2%	0.3%
Electrical Prime - Tier 2 Furnish & Install Systems	KB-Mac, Inc.		\$ 3,032,664.00	\$ 2,623,824.00	86.5%	0.7%
Earthwork Prime - Tier 2 Trucking of Materials To & From the Site	C&C Contractors, LLC		\$ 1,162,000.00	\$ 882,838.75	76.0%	0.2%
Earthwork Prime - Tier 2 Installation of Reinforcing	Regis Steel Corp		\$ 100,000.00	\$ 53,766.61	53.8%	0.0%
Earthwork Prime - Tier 2 Furnish & Install Asphalt Paving	Don Martin Corp		\$ 300,000.00	\$ 369,437.57	123.1%	0.1%
Material Only (Prime Trade-Description)	Material Supplier	Current Subcontract Value	15% of Subcontract dollar value for credit			
Ceramic Tile Prime - Tier 2 Furnishing Materials	ST Materials & Equipment, LLC	\$ 150,000.00	\$ 22,500.00	\$ 38,276.86	170.1%	0.0%
Plumbing Prime - Tier 2 Furnish Only Plumbing Materials	JHP Industrial Supply Company, Inc.	\$ 986,483.00	\$ 147,972.45	\$ 161,028.15	108.8%	0.0%
HVAC Prime -Tier 2 Furnish Only HVAC Materials	Carl-Louis & Co., Inc.	\$ 900,000.00	\$ 135,000.00	\$ 78,317.21	58.0%	0.0%
Electrical Prime - Tier 2 Furnish Low Voltage Materials	Certified Connections, Inc.	\$ 1,000,000.00	\$ 150,000.00	\$ 114,026.03	76.0%	0.0%
					Percent to Full Subcontract	Percent to Projected Goal
			\$ 17,965,691.45	\$ 10,525,225.15	58.6%	2.6%
					Projected GOAL	4.5%





# WBE Participation – Paid through DCMS October Audit 2025

Bid Package Description	Prime / Filed Sub		Current Subcontract Value	WBE Paid to Date	Percent to Full Subcontract	Percent to Goal
<b>Prime Contracts</b>						
Final Cleaning	Front Line, Inc.		\$ 701,550.00	\$ -	0.0%	0.0%
Doors, Frames, and Hardware	Thompson Company, Inc.		\$ 5,631,924.00	\$ 640,712.13	11.4%	0.2%
Carpet	Ayotte & King for Tile, Inc.		\$ 103,478.00	\$ 28,004.10	27.1%	0.0%
Window Treatments	Contexture		\$ 2,470,093.00	\$ 1,129,817.75	45.7%	0.3%
Resilient Flooring	Ayotte & King for Tile, Inc.		\$ 3,575,000.00	\$ 92,237.40	2.6%	0.0%
<b>Tier Packages (Trade-Description)</b>	<b>Tier Subcontractor</b>					
Concrete Prime - Tier 2 Furnishing Reinforcing	Rebars & Mesh, Inc.		\$ 1,400,000.00	\$ 1,259,032.50	89.9%	0.3%
Steel Prime - Tier 3 Install Shear Connectors	Composite Co., Inc.		\$ 187,610.00	\$ 162,992.60	86.9%	0.0%
Millwork Prime - Tier 2 Installation of Millwork	J. Thibert Architectural Woodwork Installation		\$ 1,924,092.00	\$ 15,999.00	0.8%	0.0%
Millwork Prime - Tier 2 Labor for loading of materials and clean up	Front Line, Inc.		\$ 937,500.00	\$ -	0.0%	0.0%
Drywall Prime - Tier 2 Labor For Carpentry Support	Adams and Ruxton Construction Company		\$ 725,000.00	\$ 1,179,081.35	162.6%	0.3%
Drywall Prime - Tier 2 Labor For Carpentry Support	Advanced Scaffold Services of N.E. LLC		\$ 39,250.00	\$ 48,956.36	124.7%	0.0%
Plumbing Prime - Tier 2 Furnish & Installation of Plumbing Materials	413 Plumbing & Heating, Inc.		\$ 1,620,000.00	\$ 524,064.55	32.3%	0.1%
HVAC Prime - Tier 2 Furnish & Installation of Sheetmetal Ductwork	L.K. Sheet Metal, Inc.		\$ 5,500,000.00	\$ 4,320,217.14	78.5%	1.1%
Electrical Prime - Tier 2 Furnish & Install Site Lighting	Chapman Construction Group, Inc.		\$ 1,308,394.00	\$ 1,308,394.00	100.0%	0.3%
Electrical Prime - Tier 2 Material and Install Gear and Lighting Package	Seaport Energy Co., Inc.		\$ 2,811,675.00	\$ 2,632,376.84	93.6%	0.7%
Earthwork Prime - Tier 2 Furnishing & Installing/ReloTemporary Site Fence	Guardrail Solutions, LLC		\$ 494,875.00	\$ 294,615.92	59.5%	0.1%
Earthwork Prime - Tier 2 Silt Fence, jute mesh & temp seeding	CSL, Inc.		\$ 142,038.00	\$ 128,664.20	90.6%	0.0%
Landscaping Prime - Tier 2 Labor and site clean up	Front Line, Inc.		\$ 900,000.00	\$ -	0.0%	0.0%
<b>Material Only (Prime Trade-Description)</b>	<b>Material Supplier</b>	<b>Contract Value</b>	<b>15% of Subcontract dollar value for credit</b>			
Masonry Prime - Tier 2 Furnish only masonry materials	Architectural Products, Inc.	\$ 195,607.00	\$ 29,341.05	\$ 12,676.03	43.2%	0.0%
Masonry Prime - Tier 2 Furnish only masonry materials	Della Supply, LLC	\$ 815,000.00	\$ 122,250.00	\$ 81,605.59	66.8%	0.0%
Steel Prime - Tier 3 Furnish only of Safety Screening System	Essential Perimeter	\$ 1,972,250.00	\$ 295,837.50	\$ 316,908.30	107.1%	0.1%
Curtain Wall, Windows & Panels Prime -Tier 2 Furnish Louvers & Vents	Architectural Products, Inc.	\$ 3,907,941.00	\$ 586,191.15	\$ 606,348.77	103.4%	0.2%
Painting Prime -Tier 2 Furnish Only Painting Supplies	Heritage Construction & Supply	\$ 156,059.00	\$ 23,408.85	\$ 1,565.64	6.7%	0.0%
HVAC Prime - Tier 2 Furnish Only Controls Material	Northeast Controls Panel Fabrication. Inc.	\$ 600,000.00	\$ 90,000.00	\$ 49,500.00	55.0%	0.0%
					<b>Percent to Full Subcontract</b>	<b>Percent to Projected Goal</b>
			\$ 32,045,460.55	\$ 15,309,417.64	47.8%	3.8%
					<b>Projected GOAL</b>	<b>8.0%</b>



# VBE Participation – Paid through DCMS October Audit 2025

Bid Package Description	Prime / Filed Sub	Current Subcontract Value	VBE Paid toDate	Percent to Full Subcontract	Percent to Goal
Management	Commodore Builders	\$ 12,000,000.00	\$ 7,889,003.20	65.7%	2.0%
Prime - Waterproofing and Dampproofing	Superior Caulking & Waterproofing Co., Inc.	\$ 3,188,000.00	\$ 1,895,164.26	59.4%	0.5%
				Percent to Full Subcontract	Percent to Projected Goal
		\$ 15,188,000.00	\$ 9,784,167.46	64.4%	2.4%
				Projected GOAL	3.8%





# Workforce Participation - \*Percentages as of 12-07-2025

Goal	All Workers	Minority 15.3%	Women 6.9%	Veterans 7%
Reported Hours	627,637.97	180,596.31	63,050.83	53,633.50
% percent	N/A	28.8%	10%	8.5%

Goal	Apprentice 20%	**Minority, Women, Veteran Apprentices 40% of Apprentice Hours
Reported Hours	127,023.25	94,082.75
% percent	20.2%	More than 40%

Goal – 40% of Apprentice Hours	Minority Apprentices	**Women Apprentices	Veteran Apprentices	Minority & Women Apprentices
Reported Hours	51,404.50	36,696.25	5,710.00	11,409.75
% percent	40.46%	29.10%	4.50%	8.98%

\*\* Includes women who are also part of a minority group.  
 \* Percentages are based on hours reported in DCMS LCPtracker



# Workforce Participation as of 12/07/2025 (1 of 4)

Division	Description	Tier 1 Contractor	Tier 2 or 3 Contractor	Total Hours	Apprentice Goal 20%		Minority Goal 15.3%		Women Goal 6.9%		Veteran Goal 7%	
					Hours	%	Hours	%	Hours	%	Hours	%
Division 01	Scaffolding	BrandSafway Services LLC, Inc.		23,037.50	5,536.50	24.0%	12,218.50	53.0%	2,344.00	10.2%	649.50	2.8%
Division 01 & 06	Progress Cleaning/Rough Carp.	Charles Services & Equipment		23,156.50	6,010.00	26.0%	9,801.00	42.3%	3,118.00	13.5%	4,430.50	19.1%
Division 01 Final Cleaning		Front Line, Inc.		878.00	-	0.0%	272.00	31.0%	72.00	8.2%	-	0.0%
Division 03	Cast-In-Place Concrete	Manafort-Precision, LLC		34,558.00	4,572.50	13.2%	7,050.50	20.4%	2,340.00	6.8%	3,442.50	10.0%
Division 03	Concrete Reinforcing	Manafort-Precision, LLC	Regis Steel Corporation	8,849.00	1,467.00	16.6%	1,734.00	19.6%	1,824.00	20.6%	1,699.00	19.2%
Division 03	Cast-In-Place Concrete	Manafort-Precision + Tiers Aggregate		43,407.00	6,039.50	13.9%	8,784.50	20.2%	4,164.00	9.6%	5,141.50	11.8%
Division 04	Masonry	Capasso Enterprises Inc.		36,371.00	3,340.50	9.2%	14,427.50	39.7%	3,135.00	8.6%	3,768.00	10.4%
Division 05	Structural Steel	Les Constructions Beauce Atlas, Inc.		-	-	0.0%	-	-	-	-	-	0.0%
Division 05	Structural Steel	Les Constructions Beauce Atlas, Inc.	McGregor Industries Inc	1,176.00	-	0.0%	328.00	27.9%	328.00	27.9%	-	0.0%
Division 05	Structural Steel	Les Constructions Beauce Atlas, Inc.	Prime Steel Erecting, Inc.	50,974.00	10,849.50	21.3%	10,603.00	20.8%	2,782.50	5.5%	6,355.00	12.5%
Division 41	Cranes	Les Constructions Beauce Atlas, Inc. / Prime Steel Erecting, Inc.	Morrow Equipment Company, LLC	4,302.50	1,143.00	26.6%	-	0.0%	2,021.50	47.0%	-	0.0%
Division 05	Structural Steel	Les Constructions Beauce Atlas, Inc. / Prime Steel Erecting, Inc.	Composite Company, Inc.	1,021.00	136.00	13.3%	-	0.0%	-	0.0%	136.00	13.3%
Division 05	Structural Steel	Les Constructions Beauce Atlas, Inc. / Prime Steel Erecting, Inc.	Trident Production Welding, Inc.	6,111.00	-	0.0%	5,580.00	91.3%	-	0.0%	-	0.0%
Division 05	Structural Steel	Les Constructions Beauce Atlas + Tiers Aggregate		63,584.50	12,128.50	19.1%	16,511.00	26.0%	5,132.00	8.1%	6,491.00	10.2%
Division 05	Misc. Metals	Quinn Brothers of essex, Inc.		369.00	-	0.0%	123.00	33.3%	55.00	14.9%	55.00	14.9%
Division 05	Misc. Metals	Quinn Brothers of essex, Inc.	American Anchor	-	-	-	-	-	-	-	-	-
Division 05	Misc. Metals	Quinn Brothers of essex, Inc. American Anchor, Inc.	T&T Steel Erectors, Inc.	-	-	0.0%	-	0.0%	-	0.0%	-	0.0%
Division 05	Misc. Metals	Quinn Brothers of Essex + Tiers Aggregate		369.00	0.00	0.0%	123.00	33.3%	55.00	14.9%	55.00	14.9%
Division 06	Millwork	Millwork One, Inc.		-	-	0.0%	-	0.0%	-	0.0%	-	0.0%
Division 06	Millwork Installation	Millwork One, Inc.	J. Thibert Architectural Woodwork Installation	1,581.00	366.00	23.1%	478.00	30.2%	160.00	10.1%	-	0.0%
Division 01	Cleaning/Labor	Millwork One, Inc.	Front Line, Inc.									
Division 06	Millwork	Millwork One, Inc. + Tiers Aggregate		1,581.00	366.00	23.1%	478.00	30.2%	160.00	10.1%	0.00	0.0%
Division 07	Fireproofing	H Carr & Sons, Inc		-	-	0.0%	-	-	-	-	-	0.0%
Division 07	Fireproofing	H Carr & Sons, Inc	Triple J Drywall and Carpentry, Inc.	659.50	510.00	77.3%	-	0.0%	40.00	6.1%	-	0.0%
Division 09	Acoustical Tile Ceilings	H Carr & Sons, Inc		7,620.00	327.00	4.3%	3,896.50	51.1%	342.00	4.5%	572.00	7.5%
Division 09	Acoustical Tile Ceilings	H Carr & Sons, Inc	Triple J Drywall and Carpentry, Inc.	-	-	0.0%	-	0.0%	-	0.0%	-	0.0%
Division 07/09	Fireproofing + ACT	H. Carr & Sons, Inc. + Tiers Aggregate		7,260.00	247.00	3.4%	3,816.50	52.6%	262.00	3.6%	468.00	6.4%
Division 07	Waterproofing and Dampproofing	Superior Caulking & Waterproofing Co., Inc.		6,978.50	-	0.0%	2,101.50	30.1%	-	0.0%	-	0.0%
Division 07	Roofing and Flashing	Titan Roofing, Inc.		6,457.50	2,243.25	34.7%	5,305.50	82.2%	68.50	1.1%	-	0.0%
Division 08	Specialty Doors	Alta Material Handling		-	-	0.0%	-	0.0%	-	0.0%	-	0.0%





# Workforce Participation as of 12/07/2025 (2 of 4)

Description	Tier 1 Contractor	Tier 2 or 3 Contractor	Total Hours	Apprentice Goal 20%		Minority Goal 15.3%		Women Goal 6.9%		Veteran Goal 7%	
				Hours	%	Hours	%	Hours	%	Hours	%
<b>Curtain Wall + Glass &amp; Glazing</b>	<b>Chandler Architectural Products, Inc.</b>		<b>23,530.50</b>	<b>4,894.50</b>	<b>20.80%</b>	<b>6,297.50</b>	<b>26.76%</b>	<b>2,425.00</b>	<b>10.31%</b>	<b>6,394.50</b>	<b>27.18%</b>
<b>Doors, Frames, and Hardware</b>	<b>Thompson Co., Inc. + Tiers Aggregate</b>		<b>144.00</b>	<b>-</b>	<b>0.0%</b>	<b>-</b>	<b>0.0%</b>	<b>-</b>	<b>0.0%</b>	<b>-</b>	<b>0.0%</b>
<b>Resinous Flooring</b>	<b>Allegheny Contract Flooring, Inc.</b>		<b>3,712.00</b>	<b>1,376.00</b>	<b>37.1%</b>	<b>2,132.00</b>	<b>57.4%</b>	<b>-</b>	<b>0.0%</b>	<b>-</b>	<b>0.0%</b>
<b>Resilient Flooring &amp; Carpet</b>	<b>Ayotte and King for Tile Inc.</b>		<b>1,404.00</b>	<b>310.00</b>	<b>22.1%</b>	<b>72.00</b>	<b>5.1%</b>	<b>72.00</b>	<b>5.1%</b>	<b>-</b>	<b>0.0%</b>
<b>Tile</b>	<b>Select Tile, Marble &amp; Flooring, LLC</b>		<b>3,365.00</b>	<b>186.00</b>	<b>5.5%</b>	<b>1,693.00</b>	<b>50.3%</b>	<b>362.00</b>	<b>10.8%</b>	<b>-</b>	<b>0.0%</b>
<b>Terrazzo</b>	<b>Roman Mosaic and Tile Company</b>		<b>-</b>	<b>-</b>	<b>0.0%</b>	<b>-</b>	<b>0.0%</b>	<b>-</b>	<b>0.0%</b>	<b>-</b>	<b>0.0%</b>
<b>Painting</b>	<b>John W. Egan Company Inc.</b>		<b>1,698.00</b>	<b>246.00</b>	<b>14.5%</b>	<b>-</b>	<b>0.0%</b>	<b>736.00</b>	<b>43.3%</b>	<b>-</b>	<b>0.0%</b>
Drywall	Professional Drywall Construction, Inc.		62,951.00	12,140.50	19.3%	31,493.50	50.0%	6,861.00	10.9%	4,661.50	7.4%
Window Blocking/Clean Up	Professional Drywall Construction, Inc.	Adams & Ruxton Construction Co.	7,954.25	1,668.75	21.0%	3,086.25	38.8%	878.75	11.0%	1,494.50	18.8%
Taping	Professional Drywall Construction, Inc.	Scorpions Contracting, Inc.	268.00	-	0.0%	224.00	83.6%	-	0.0%	-	0.0%
Taping	Professional Drywall Construction, Inc.	American Finish Systems	4,377.50	-	0.0%	3,824.50	87.4%	224.00	5.1%	92.00	2.1%
Taping	Professional Drywall Construction, Inc.	Connecticut Drywal Finishing	24.00	-	0.0%	-	0.0%	-	0.0%	-	0.0%
Drywall/Insulation	Professional Drywall Construction, Inc.	Acoustical Thermal Insulators, Inc.	-	-	0.0%	-	0.0%	-	0.0%	-	0.0%
Scaffolding	Professional Drywall Construction, Inc.	Advanced Scaffold Services of NE	156.00	8.00	5.1%	93.00	59.6%	-	0.0%	-	0.0%
<b>Drywall</b>	<b>Professional Drywall Construction, Inc. + Tiers Aggregate</b>		<b>75,730.75</b>	<b>13,817.25</b>	<b>18.2%</b>	<b>38,721.25</b>	<b>51.1%</b>	<b>7,963.75</b>	<b>10.5%</b>	<b>6,248.00</b>	<b>8.3%</b>
<b>Specialties</b>	<b>Unified Specialty Services</b>		<b>1,532.00</b>	<b>478.00</b>	<b>31.2%</b>	<b>-</b>	<b>0.0%</b>	<b>200.00</b>	<b>13.1%</b>	<b>-</b>	<b>0.0%</b>
<b>Signage</b>	<b>Design Communications</b>		<b>-</b>	<b>-</b>	<b>0.0%</b>	<b>-</b>	<b>0.0%</b>	<b>-</b>	<b>0.0%</b>	<b>-</b>	<b>0.0%</b>
Appliances/Food Service	Singer MA, LLC dba Singer Kittredge		125.75	-	0.0%	3.00	2.4%	-	0.0%	-	0.0%
Appliances/Food Service	Singer MA, LLC dba Singer Kittredge	Titan Roofing, Inc.	28.00	14.00	50.0%	-	0.0%	-	0.0%	-	0.0%
<b>Appliances/Food Service</b>	<b>Singer + Tiers Aggregate</b>		<b>153.75</b>	<b>14.00</b>	<b>0.0%</b>	<b>3.00</b>	<b>2.0%</b>	<b>0.00</b>	<b>0.0%</b>	<b>0.00</b>	<b>0.0%</b>
<b>Window Treatments</b>	<b>Contexture + Tiers Aggregate</b>		<b>336.25</b>	<b>0.00</b>	<b>0.0%</b>	<b>20.50</b>	<b>6.1%</b>	<b>0.00</b>	<b>0.0%</b>	<b>0.00</b>	<b>0.0%</b>
Electric Trolley Hoist	Mass Crane & Hoist		-	-	0.0%	-	0.0%	-	0.0%	-	0.0%
Electric Trolley Hoist/Install	Mass Crane & Hoist	IPC Lydon	-	-	0.0%	-	0.0%	-	0.0%	-	0.0%
<b>Electric Trolley Hoist</b>	<b>Mass Crane + Tiers Aggregate</b>		<b>0.00</b>	<b>0.00</b>	<b>0.0%</b>	<b>0.00</b>	<b>0.0%</b>	<b>0.00</b>	<b>0.0%</b>	<b>0.00</b>	<b>0.0%</b>
<b>Elevator</b>	<b>KONE</b>		<b>4,663.25</b>	<b>944.00</b>	<b>20.2%</b>	<b>770.00</b>	<b>16.5%</b>	<b>132.00</b>	<b>2.8%</b>	<b>373.00</b>	<b>8.0%</b>



# Workforce Participation as of 12/07/2025 (3 of 4)

Description	Tier 1 Contractor	Tier 2 or 3 Contractor	Total Hours	Apprentice Goal 20%		Minority Goal 15.3%		Women Goal 6.9%		Veteran Goal 7%	
				Hours	%	Hours	%	Hours	%	Hours	%
Fire Protection	Arden Engineering Constructors, LLC		-	-	0.0%	-	-	-	-	-	0.0%
Plumbing	Arden Engineering Constructors, LLC		60,067.50	13,253.00	22.1%	5,592.00	9.31%	3,380.00	5.63%	4,044.00	6.7%
Plumbing	Arden Engineering Constructors, LLC	413 Plumbing & Heating Inc.	1,187.50	431.00	36.3%	114.00	9.6%	-	0.0%	32.00	2.7%
Plumbing	Arden Engineering Constructors, LLC	M.J.Daly LLC	2,424.50	-	0.0%	2,416.50	99.7%	-	0.0%	-	0.0%
Plumbing Insulation	Arden Engineering Constructors, LLC	Kim Industries Inc	4,880.00	8.00	0.2%	1,465.50	30.0%	-	0.0%	-	0.0%
<b>Fire Protection + Plumbing</b>	<b>Arden Engineering Constructors, LLC + Tiers Aggregate</b>		<b>68,559.50</b>	<b>13,692.00</b>	<b>20.0%</b>	<b>9,588.00</b>	<b>14.0%</b>	<b>3,380.00</b>	<b>4.9%</b>	<b>4,076.00</b>	<b>5.9%</b>
HVAC	Harry Grodsky & Co., Inc.		33,729.00	7,481.00	22.2%	4,939.50	14.6%	2,267.00	6.7%	2,345.00	7.0%
HVAC Sheetmetal Work	Harry Grodsky & Co., Inc.	LK Sheetmetal	35,788.50	11,009.00	30.8%	10,405.50	29.1%	6,736.50	18.8%	2,247.00	6.3%
HVAC Insulation	Harry Grodsky & Co., Inc.	Kim Industries Inc	9,304.00	2,163.00	23.3%	2,924.00	31.4%	-	0.0%	-	0.0%
Firestopping	Harry Grodsky & Co., Inc.	Barber Firestop Systems LLC	1,069.00	82.00	7.7%	-	0.0%	-	0.0%	66.00	6.2%
Cranes	Harry Grodsky & Co., Inc.	Central Mass Crane Service Inc.	239.00	73.00	30.5%	-	0.0%	34.50	14.4%	-	0.0%
HVAC	Harry Grodsky & Co., Inc.	Automated Logic Contracting Services	401.00	-	0.0%	-	0.0%	-	0.0%	-	0.0%
HVAC	Harry Grodsky & Co., Inc. / Automated Logic Contracting Services	William Roberts Electric Co., Inc	6,781.75	1,923.25	28.4%	1,605.00	23.7%	285.25	4.2%	-	0.0%
<b>HVAC</b>	<b>Harry Grodsky &amp; Co., Inc. + Tiers Aggregate</b>		<b>87,312.25</b>	<b>22,731.25</b>	<b>26.0%</b>	<b>19,874.00</b>	<b>22.8%</b>	<b>9,323.25</b>	<b>10.7%</b>	<b>4,658.00</b>	<b>5.3%</b>
Electrical / Low Voltage	Collins Electric Co., Inc.		67,026.25	19,654.00	29.3%	14,043.50	21.0%	10,814.25	16.1%	6,019.50	9.0%
Electrical / Low Voltage	Collins Electric Co., Inc.	Chapman Construction Group, Inc.	8.00	-	0.0%	-	0.0%	-	0.0%	-	0.0%
Electrical / Low Voltage	Collins Electric Co., Inc.	Seaport Energy Co., Inc.	48.00	-	0.0%	-	0.0%	-	0.0%	-	0.0%
Electrical / Low Voltage	Collins Electric Co., Inc.	KB-Mac, Inc.	-	-	0.0%	-	0.0%	-	0.0%	-	0.0%
<b>Electrical / Low Voltage</b>	<b>Collins Electric Co., Inc. + Tiers Aggregate</b>		<b>67,082.25</b>	<b>19,654.00</b>	<b>29.3%</b>	<b>14,043.50</b>	<b>20.9%</b>	<b>10,814.25</b>	<b>16.1%</b>	<b>6,019.50</b>	<b>9.0%</b>
Earthwork	Northern Construction Service, LLC		907.50	-	0.0%	-	0.0%	263.00	29.0%	3.50	0.4%
Earthwork	Northern Construction Service, LLC	Northern General Contractors, Inc.	52,406.00	11,072.50	21.1%	9,072.00	17.3%	4,046.50	7.7%	3,679.00	7.0%
Earthwork	Northern Construction Service, LLC	Northern Land Clearance LLC	332.50	-	0.0%	-	0.0%	-	0.0%	-	0.0%
Concrete cutting	Northern Construction Service, LLC	Ace Concrete Cutting, LLC	4.00	-	0.0%	-	0.0%	-	0.0%	-	0.0%
Erosion and sediment control	Northern Construction Service, LLC	CSL, Inc.	376.00	-	0.0%	108.00	28.7%	-	0.0%	-	0.0%
Fence and gates	Northern Construction Service, LLC	Guardrail Solutions LLC	938.00	-	0.0%	332.50	35.4%	-	0.0%	47.50	5.1%
Earthwork	Northern Construction Service, LLC	Keller North America	4,239.00	704.50	16.6%	179.00	4.2%	-	0.0%	281.00	6.6%
Asphalt Paving	Northern Construction Service, LLC	Don Martin Corporation	95.00	-	0.0%	38.00	40.0%	-	0.0%	19.00	20.0%
Asphalt Paving	Northern Construction Service, LLC	Palmer Paving Corporation	-	-	0.0%	-	0.0%	-	0.0%	-	0.0%
Concrete Reinforcing	Northern Construction Service, LLC	Regis Steel Corporation	393.00	48.00	12.2%	86.00	21.9%	161.00	41.0%	67.00	17.0%





# Workforce Participation as of 11/09/2025 (4 of 4)

Description	Tier 1 Contractor	Tier 2 or 3 Contractor	Total Hours	Apprentice Goal 20%		Minority Goal 15.3%		Women Goal 6.9%		Veteran Goal 7%	
				Hours	%	Hours	%	Hours	%	Hours	%
Fire Protection	Arden Engineering Constructors, LLC		-	-	0.0%	-	-	-	-	-	0.0%
Plumbing	Arden Engineering Constructors, LLC		60,067.50	13,253.00	22.1%	5,592.00	9.31%	3,380.00	5.63%	4,044.00	6.7%
Plumbing	Arden Engineering Constructors, LLC	413 Plumbing & Heating Inc.	1,187.50	431.00	36.3%	114.00	9.6%	-	0.0%	32.00	2.7%
Plumbing	Arden Engineering Constructors, LLC	M.J.Daly LLC	2,424.50	-	0.0%	2,416.50	99.7%	-	0.0%	-	0.0%
Plumbing Insulation	Arden Engineering Constructors, LLC	Kim Industries Inc	4,880.00	8.00	0.2%	1,465.50	30.0%	-	0.0%	-	0.0%
<b>Fire Protection + Plumbing</b>	<b>Arden Engineering Constructors, LLC + Tiers Aggregate</b>		<b>68,559.50</b>	<b>13,692.00</b>	<b>20.0%</b>	<b>9,588.00</b>	<b>14.0%</b>	<b>3,380.00</b>	<b>4.9%</b>	<b>4,076.00</b>	<b>5.9%</b>
HVAC	Harry Grodsky & Co., Inc.		33,729.00	7,481.00	22.2%	4,939.50	14.6%	2,267.00	6.7%	2,345.00	7.0%
HVAC Sheetmetal Work	Harry Grodsky & Co., Inc.	LK Sheetmetal	35,788.50	11,009.00	30.8%	10,405.50	29.1%	6,736.50	18.8%	2,247.00	6.3%
Geothermal	Northern Construction Service, LLC	Skillings & Sons, Inc.	2,206.25	-	0.0%	416.25	18.9%	-	0.0%	344.00	15.6%
Geothermal	Northern Construction Service, LLC / Skillings & Sons, Inc.	Ground Source Drilling LLC	136.00	-	0.0%	-	0.0%	-	0.0%	-	0.0%
Geothermal	Northern Construction Service, LLC / Skillings & Sons, Inc.	Wragg Well Company LLC	319.00	-	0.0%	-	0.0%	-	0.0%	-	0.0%
<b>Earthwork</b>	<b>Northern Construction Service, LLC + Tiers Aggregate</b>		<b>62,352.25</b>	<b>11,825.00</b>	<b>19.0%</b>	<b>10,231.75</b>	<b>16.4%</b>	<b>4,470.50</b>	<b>7.2%</b>	<b>4,441.00</b>	<b>7.1%</b>
Landscaping	Brightview Landscape		1,389.91	-	0.0%	280.28	20.2%	278.08	20.0%	-	0.0%
Landscaping	Brightview Landscape	Front Line, Inc.	-	-	0.0%	-	0.0%	-	0.0%	-	0.0%
<b>Landscaping</b>	<b>Brightview + Tiers Aggregate</b>		<b>1,389.91</b>	<b>0.00</b>	<b>0.0%</b>	<b>280.28</b>	<b>20.2%</b>	<b>278.08</b>	<b>20.0%</b>	<b>136.00</b>	<b>9.8%</b>
<b>Cranes</b>	<b>Marr Crane &amp; Rigging</b>		<b>5,715.00</b>	<b>-</b>	<b>0.0%</b>	<b>2,134.50</b>	<b>37.3%</b>	<b>3,441.50</b>	<b>60.2%</b>	<b>-</b>	<b>0.0%</b>
			<b>627,637.97</b>	<b>127,023.25</b>	<b>20.2%</b>	<b>180,506.31</b>	<b>28.8%</b>	<b>63,050.83</b>	<b>10.0%</b>	<b>53,633.50</b>	<b>8.5%</b>



# Apprentice Workforce Participation as of 12/12/2025 (1 of 2)

Tier 1 Contractor															
Tier 2 Contractor	Apprentice 20% Goal	Minority					Women			Veteran			Minority Hours	& Count	Women %
Tier 3 Contractor	Hours	Count	%	Hours	Count	%	Hours	Count	%	Hours	Count	%			
<b>Arden Engineering Constructors, LLC</b>	13,253.00	17	22.1%	840.5	4	6.3%	2,480.50	2	18.7%	255.50	1	1.9%	0.00	0	0.0%
413 Plumbing & Heating Inc.	431.00	3	36.3%	0	0	0.0%	-	0	0.0%	0.00	0	0.0%	0.00	0	0.0%
Kim Industries Inc	8.00	1	20.0%	0	0	0.0%	-	0	0.0%	0.00	0	0.0%	0.00	0	0.0%
<b>Allegheny Contract Flooring, Inc.</b>	1,376.00	5	37.1%	748	3	54.4%	-	0	0.0%	0.00	0	0.0%	0.00	0	0.0%
<b>Ayotte and King for Tile Inc.</b>	310.00	3	22.1%	10	1	3.2%	72.00	1	23.2%	0.00	0	0.0%	0.00	0	0.0%
<b>B-G Mechanical Contractors, Inc.</b>	303.00	1	30.0%	0.2	0	0.0%	-	0	0.0%	0.00	0	0.0%	0.00	0	0.0%
<b>BrandSafway Services LLC, Inc.</b>	5,536.50	4	24.0%	4226.5	2	76.3%	2,344.00	1	42.3%	0.00	0	0.0%	2,344.00	1	42.3%
<b>Capasso Enterprises Inc.</b>	3,340.50	4	9.2%	1485	2	44.5%	614.00	2	18.4%	0.00	0	0.0%	129.50	1	3.9%
<b>Chandler Architectural Products, Inc.</b>	4,894.50	8	20.8%	841	1	17.2%	2,049.50	3	41.9%	1,552.50	1	31.7%	841.00	1	17.2%
<b>Charles Services &amp; Equipment</b>	6,010.00	5	26.0%	6010	5	100.0%	2,550.00	3	42.4%	0.00	0	0.0%	2,550.00	3	42.4%
<b>Collins Electric Co., Inc.</b>	19,654.00	40	29.3%	7567.5	10	38.5%	6,518.75	4	33.2%	1,717.00	2	8.7%	0.00	0	0.0%
<b>Edward F. Corcoran Plumbing &amp; Heating</b>	48.00	1	32.0%	0.2	0	0.0%	-	0	0.0%	0.00	0	0.0%	0.00	0	0.0%
<b>H Carr &amp; Sons, Inc</b>	327.00	3	4.3%	0	0	0.0%	238.00	1	72.8%	0.00	0	0.0%	0.00	0	0.0%
Triple J Drywall and Carpentry, Inc.	510.00	1	77.3%	0	0	0.0%	-	0	0.0%	0.00	0	0.0%	0.00	0	0.0%
<b>Harry Grodsky &amp; Co., Inc.</b>	7,481.00	5	22.2%	2883.5	1	38.5%	2,267.00	1	30.3%	0.00	0	0.0%	0.00	0	0.0%
Kim Industries Inc	2,163.00	5	23.2%	40	2	1.9%	-	0	0.0%	0.00	0	0.0%	0.00	0	0.0%
LK Sheetmetal	11,009.00	13	30.8%	2852.5	3	25.9%	4,508.50	3	41.0%	0.00	0	0.0%	0.00	0	0.0%
Todd Barber dba Barber Firestop Systems LLC	82.00	1	7.7%	0	0	0.0%	-	0	0.0%	0.00	0	0.0%	0.00	0	0.0%
William Roberts Electric Co., Inc	1,923.25	3	28.4%	1605	1	83.5%	285.25	1	14.8%	0.00	0	0.0%	0.00	0	0.0%
Central Mass Crane Service Inc.	73.00	1	30.5%	0	0	0.0%	-	0	0.0%	0.00	0	0.0%	0.00	0	0.0%





# Apprentice Workforce Participation as of 12/07/2025 (2 of 2)

Tier 1 Contractor															
Tier 2 Contractor	Apprentice 20% Goal			Minority			Women			Veteran			Minority Hours	& Count	Women %
Tier 3 Contrator	Hours	Count	%	Hours	Count	%	Hours	Count	%	Hours	Count	%			
<b>John W. Egan Company Inc.</b>	246.00	2	14.5%	0	0	0.0%	144.00	1	58.5%	0.00	0	0.0%	0.00	0	0.0%
<b>KONE, Inc.</b>	944.00	5	20.2%	527	2	55.8%	10.00	1	1.1%	373.00	1	39.5%	10.00	1	1.1%
<b>Les Constructions Beauce-Atlas, Inc.</b>															
Prime Steel Erecting, Inc.	10,849.50	16	21.3%	2299.5	6	21.2%	1,239.50	3	11.4%	1,154.00	2	10.6%	277.50	1	2.6%
Composite Company, Inc.	136.00	1	13.3%	0	0	0.0%	-	0	0.0%	136.00	1	100.0%	0.00	0	0.0%
Morrow Equipment Company, LLC	1,143.00	2	26.6%	0	0	0.0%	1,112.00	1	97.3%	0.00	0	0.0%	0.00	0	0.0%
<b>Manafort-Precision, LLC</b>	4,572.50	9	13.9%	2329	4	50.9%	2,340.00	4	51.2%	78.00	1	1.7%	1,702.00	1	37.2%
Regis Steel Corporation	1,467.00	6	17.1%	606	2	41.3%	559.00	2	38.1%	429.00	1	29.2%	409.00	1	27.9%
<b>Millwork One, Inc.</b>	-	0	0.0%	0	0	0.0%	-	0	0.0%	0.00	0	0.0%	0.00	0	0.0%
J. Thibert Architectural Woodwork Installation	366.00	2	23.1%	206	1	56.3%	160.00	1	43.7%	0.00	0	0.0%	0.00	0	0.0%
<b>Moran Sheet Metal, Inc.</b>	7.00	1	54.0%	0.2	0	0.0%	-	0	0.0%	0.00	0	0.0%	0.00	0	0.0%
<b>Northern General Contractors, Inc.</b>	11,072.50	13	21.4%	7396	7	66.8%	2,870.00	3	25.9%	0.00	0	0.0%	1,315.00	1	11.9%
Keller North America	704.50	2	17.0%	0	0	0.0%	-	0	0.0%	0.00	0	0.0%	0.00	0	0.0%
Regis Steel Corporation	48.00	6	12.2%	25	2	52.8%	25.00	2	52.1%	7.00	1	14.6%	22.00	1	28.6%
<b>Power Line Contractors, Inc.</b>	10.00	1	1.0%	0.2	0	0.0%	-	0	0.0%	0.00	0	0.0%	0.00	0	0.0%
<b>Professional Drywall Construction, Inc.</b>	12,140.50	18	19.3%	5716.5	7	47.1%	3,309.00	4	27.3%	8.00	1	0.1%	745.00	1	6.1%
Advanced Scaffold Services of NE	8.00	1	5.1%	8	1	100.0%	-	0	0.0%	0.00	0	0.0%	0.00	0	0.0%
Adams & Ruxton Construction Company	1,668.75	3	21.0%	878.75	1	52.7%	878.75	1	52.7%	0.00	0	0.0%	878.75	1	52.7%
<b>Select Tile, Marble &amp; Flooring,LLC</b>	186.00	1	5.5%	186	1	100.0%	186.00	1	100.0%	0.00	0	0.0%	186.00	1	100.0%
<b>Titan Roofing, Inc.</b>	2,243.25	15	34.7%	2116.25	9	94.3%	8.50	1	0.4%	0.00	0	0.0%	0.00	0	0.0%
<b>Unified Specialty Services</b>	478.00	2	31.2%	0	0	0.0%	200.00	1	41.8%	0.00	0	0.0%	0.00	0	0.0%
<b>Total for Project (Chiller &amp; Main):</b>	<b>127,023.25</b>	<b>224</b>	<b>20.2%</b>	<b>51,403.50</b>	<b>76</b>	<b>40.47%</b>	<b>36,969.25</b>	<b>46</b>	<b>29.10%</b>	<b>5,710.00</b>	<b>11</b>	<b>4.50%</b>	<b>11,409.75</b>	<b>14</b>	<b>8.98%</b>



## Outreach: Job Site Tours



December 11

Franklin County Tech – Sophomore Electrical





# Questions

