



DIVISION OF
CAPITAL ASSET
MANAGEMENT &
MAINTENANCE



Holyoke Veterans' Home
Access, Inclusion & Diversity Committee
Project Update
December 15, 2023

AGENDA

Project Update

- Project/Schedule Update
- Work In Progress
- Workforce Report
- Ongoing Outreach
- Questions



Project Schedule

Holyoke Soldiers' Home - Milestone Schedule

December 2023

Tasks		Project Duration																							
		2023						2024												2025	2026	2027	2028		
		Q3			Q4			Q1			Q2			Q3			Q4								
		Months						Months																	
		7	8	9	10	11	12	1	2	3	4	5	6	7	8	9	10	11	12						
Actual	NTP for Main Package Construction Issued (6/21/23)																								
Actual	Issue Subcontracts/Mobilize/Site Fence																								
Current projection	Site Clearing & Prep/Chiller and Dorm Building Demo																								
Current projection	Site Utilities/Entrance Road/Footings & Foundations																								
Current projection	Structural Steel Erection/Concrete Slabs																								
Current projection	Exterior Framing/Sheathing/Envelope																								
Current projection	Interior Fit-out/Testing & Inspections																								
Current projection	Sitework/Hardscape/Landscape																								
Current projection	New Building Substantial Completion (Q4 2026)																								
Current projection	Existing Building Demo/Site Restoration																								
Current projection	Phase 2 Sitework/Hardscape/Landscape																								
Current projection	Main Package Construction																								



COMMODORE | WALSH
HOLYOKE JOINT VENTURE

Project Update December 2023

Work In Progress



COMMODORE | WALSH
HOLYOKE JOINT VENTURE

Project Update December 2023

Work In Progress



COMMODORE | WALSH
HOLYOKE JOINT VENTURE

Project Update December 2023

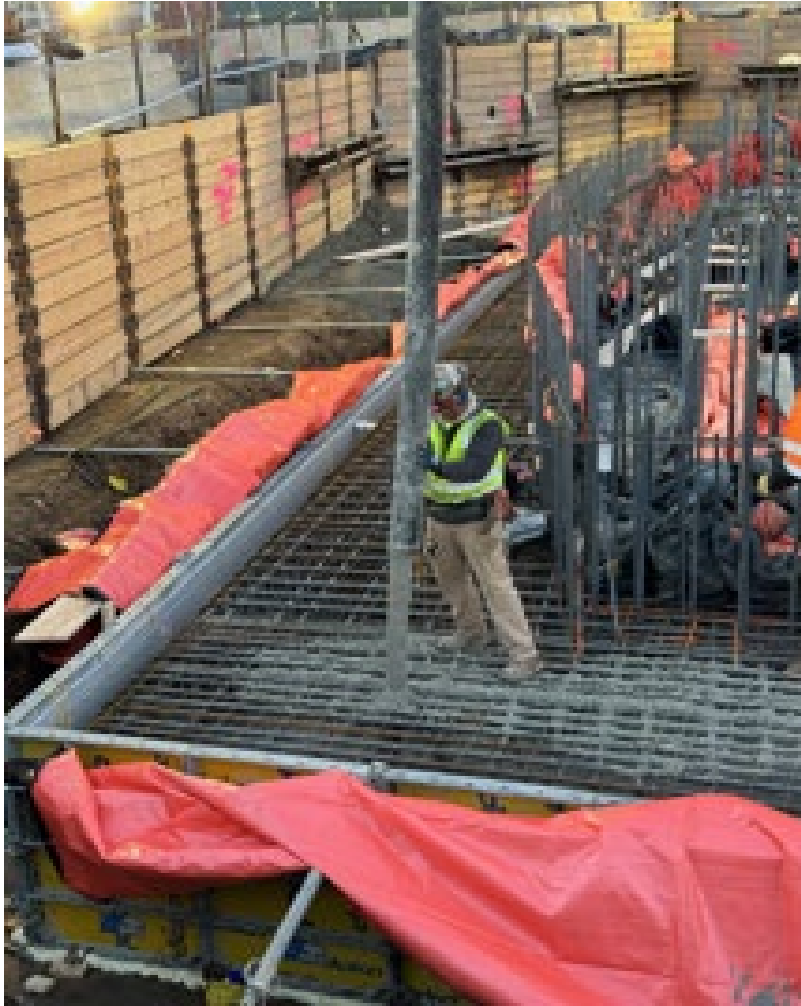
Work In Progress



COMMODORE | WALSH
HOLYOKE JOINT VENTURE

Project Update December 2023

Work In Progress



COMMODORE | WALSH
HOLYOKE JOINT VENTURE

Project Update December 2023

Workforce Report (Early Package & Main Project)

Contractor	Total Hours	Apprentice 20%		Minority 15.3%		Women 6.9%		Veteran 7%		Date Range: From 9/1/2022 to 12/10/2023
		Hours	%	Hours	%	Hours	%	Hours	%	
ACME Lightning Rod, LLC	11.56	-	0.00%	5.78	50.00%	-	0.00%	-	0.00%	Early Package Main Package
American Environmental, Inc. (Early & Main	1,263.00	-	0.00%	418.00	33.10%	710.00	56.22%	172.00	13.62%	
Arden Engineering Constructors, LLC	12.50	-	0.00%	-	0.00%	-	0.00%	-	0.00%	
Atlantic Bridge & Engineering, Inc.	221.00	-	0.00%	25.00	11.31%	-	0.00%	-	0.00%	
Automated Logic Contracting Services	69.00	-	0.00%	-	0.00%	-	0.00%	-	0.00%	
B-G Mechanical Contractors, Inc.	994.00	303.00	30.48%	-	0.00%	-	0.00%	-	0.00%	
Carlisle Engineering, Inc.	123.00	-	0.00%	-	0.00%	-	0.00%	-	0.00%	
Central Mass Crane Service Inc.	24.00	-	0.00%	-	0.00%	-	0.00%	-	0.00%	
Collins Electric Co., Inc. (Early & Main Package)	2,257.00	263.50	11.67%	166.00	7.35%	168.00	7.44%	190.00	8.42%	
CSL, Inc.	344.00	-	0.00%	100.00	29.07%	-	0.00%	-	0.00%	
Edward F. Corcoran Plumbing & Heating	152.00	48.00	31.58%	-	0.00%	-	0.00%	-	0.00%	
Guardrail Solutions LLC	685.00	-	0.00%	261.00	38.10%	-	0.00%	28.50	4.16%	
Harry Grodsky & Co., Inc.	24.00	-	0.00%	-	0.00%	-	0.00%	-	0.00%	
Insulation Contractor of New England LLC	195.00	-	0.00%	-	0.00%	24.00	12.31%	-	0.00%	
Keller North America	3,217.00	704.50	21.90%	100.00	3.11%	-	0.00%	281.00	8.73%	
Manafort-Precision, LLC	343.00	-	0.00%	56.00	16.33%	16.00	4.66%	8.00	2.33%	
Moran Sheet Metal, Inc.	13.00	7.00	53.85%	-	0.00%	-	0.00%	-	0.00%	
Northeast Painting Associates, Inc.	27.50	-	0.00%	-	0.00%	27.50	100.00%	-	0.00%	
Northern Construction Service, LLC	45.00	-	0.00%	-	0.00%	-	0.00%	-	0.00%	
Northern General Contractors, Inc.	13,938.00	1,913.50	13.73%	1,945.00	13.95%	1,132.50	8.13%	1,532.00	10.99%	
NORTHERN LAND CLEARING LLC	332.50	-	0.00%	-	0.00%	-	0.00%	-	0.00%	
Performance Testing and Balancing	16.00	-	0.00%	-	0.00%	-	0.00%	-	0.00%	
Power Line Contractors, Inc.	1,276.50	10.00	0.78%	138.00	10.81%	-	0.00%	-	0.00%	
Prime Steel Erecting, Inc.	16.00	-	0.00%	-	0.00%	-	0.00%	-	0.00%	
Rockwell Roofing, Inc.	179.25	-	0.00%	50.75	28.31%	-	0.00%	-	0.00%	
Sweeney Drywall Finishes Corp	149.00	-	0.00%	32.00	21.48%	-	0.00%	-	0.00%	
T & M Equipment Corporation	248.50	-	0.00%	40.50	16.30%	60.50	24.35%	-	0.00%	
William Roberts Electric Co., Inc	116.00	33.00	28.45%	-	0.00%	-	0.00%	-	0.00%	
Total for Project:	26,292.31	3,282.50	12.48%	3,338.03	12.70%	2,138.50	8.13%	2,211.50	8.41%	



COMMODORE | WALSH
HOLYOKE JOINT VENTURE

Workforce Report December 2023

Outreach Events

Recent Events

10/3/23 Massport Means Business

10/6/23 BECMA Black Expo – Boston, MA

10/17/23 Associated General Contractors

10/25/23 Diversifying Southeastern MA Workforce and Supply Chain Event - Brockton

11/2/23 DCAMM/SDO/UMBA – Springfield MBE/WBE/VBE Outreach Event

11/8/23 Mass Girls in Trades Eastern Conference – IBEW Local 103 Dorchester, MA

11/16/23 Mass Girls in Trades Western Conference, Dean Tech High School – Holyoke, MA

Upcoming Events

1/24/24 MA Public Construction Opportunities 2 - 3:30pm

4/09/24 MA Public Construction Opportunities 11am – 12:30pm

6/12/24 MA Public Construction Opportunities 2 – 3:30pm

9/10/24 MA Public Construction Opportunities 11am – 12:30pm

11/20/24 MA Public Construction Opportunities 10 - 11:30am



On-Going Efforts

Diversifying the Construction Workforce

C|W was on the planning committee and sponsored a booth at the Girls in Trades Western, MA. We met with young women interested in the trades and are working on matching them with opportunities.



Growing the SDO's Certified MBE/WBE & VBE Vendor Pool

C|W recently identified small Minority and Women Owned Businesses and we are helping them through the SDO's precertification and application process.



QUESTIONS



COMMODORE | WALSH
HOLYOKE JOINT VENTURE

Project Update December 2023