



DIVISION OF  
CAPITAL ASSET  
MANAGEMENT &  
MAINTENANCE



**Holyoke Veterans' Home**  
**Access, Inclusion & Diversity Committee**  
**Project Update**  
**July 19, 2024**



# AGENDA

## Project Update

- Project/Schedule Update
- Work In Progress
- Project Business Participation Plan
- Business Participation Payment Report
- Workforce Hours Report
- Ongoing Outreach
- Questions



# Project Schedule

Holyoke Soldiers' Home - Milestone Schedule

Jul-24

Tasks		Project Duration																							
		2023						2024												2025	2026	2027	2028		
		Q3			Q4			Q1			Q2			Q3			Q4								
		Months						Months																	
		7	8	9	10	11	12	1	2	3	4	5	6	7	8	9	10	11	12						
Actual	NTP for Main Package Construction Issued (6/21/23)																								
Actual	Issue Subcontracts/Mobilize/Site Fence																								
Current projection	Site Clearing & Prep/Chiller and Dorm Building Demo																								
Current projection	Site Utilities/Entrance Road/Footings & Foundations																								
Current projection	Structural Steel Erection/Concrete Slabs																								
Current projection	Exterior Framing/Sheathing/Envelope																								
Current projection	Interior Fit-out/Testing & Inspections																								
Current projection	Sitework/Hardscape/Landscape																								
Current projection	New Building Substantial Completion (Q4 2026)																								
Current projection	Existing Building Demo/Site Restoration																								
Current projection	Phase 2 Sitework/Hardscape/Landscape																								
Current projection	Main Package Construction																								



**COMMODORE | WALSH**  
HOLYOKE JOINT VENTURE

**Project Update July 2024**



# Work In Progress – Overall Site



**COMMODORE | WALSH**  
HOLYOKE JOINT VENTURE

**Project Update July 2024**



# Work In Progress – Steel Erection



**COMMODORE | WALSH**  
HOLYOKE JOINT VENTURE

**Project Update July 2024**



# Work In Progress – Steel Erection



**COMMODORE | WALSH**  
HOLYOKE JOINT VENTURE

**Project Update July 2024**



# Work In Progress – Geothermal installation

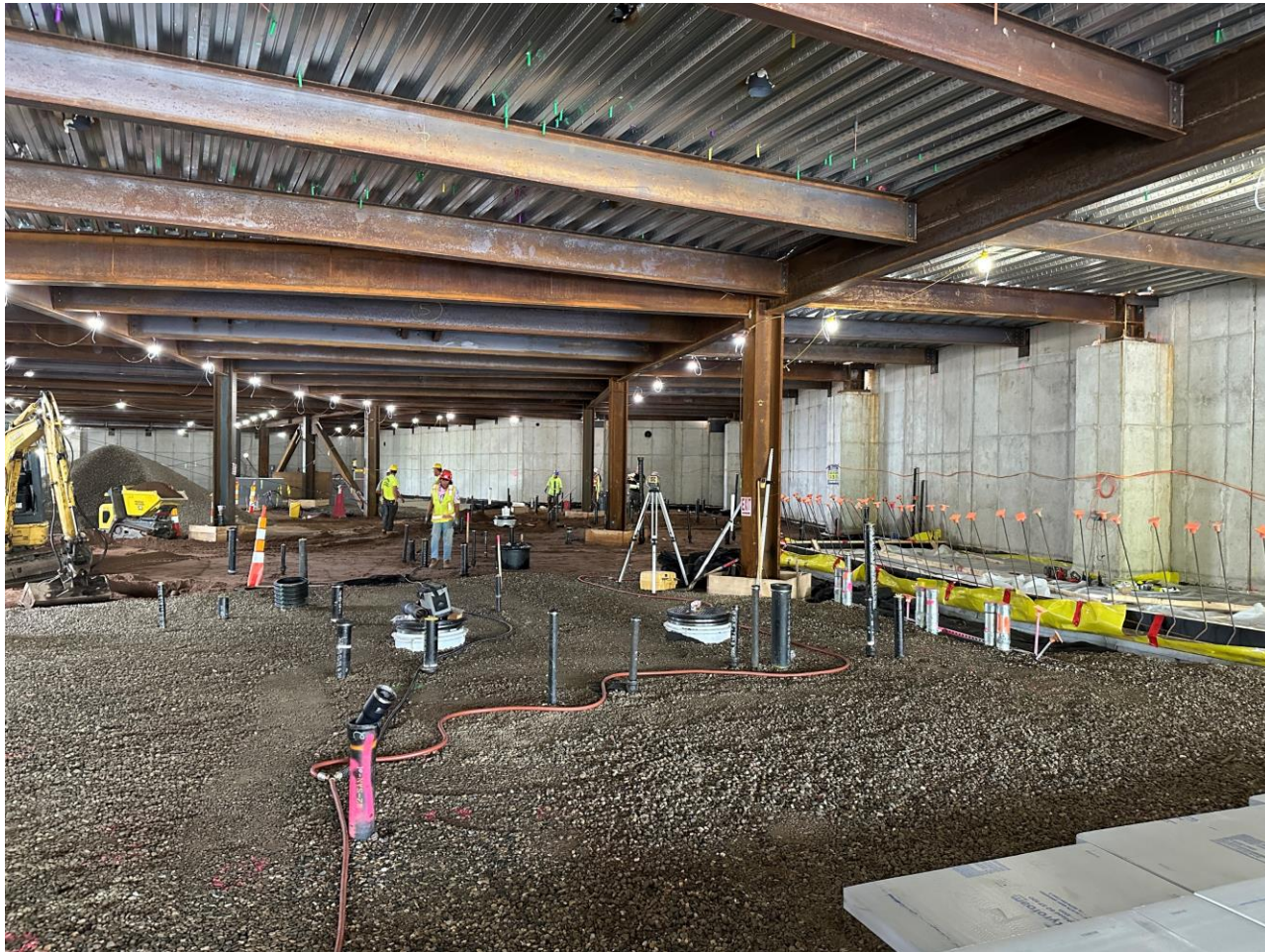


**COMMODORE | WALSH**  
HOLYOKE JOINT VENTURE

**Project Update July 2024**



# Work In Progress – Utility Installation



**COMMODORE | WALSH**  
HOLYOKE JOINT VENTURE

**Project Update July 2024**



# Work In Progress – Slab Preparation



**COMMODORE | WALSH**  
HOLYOKE JOINT VENTURE

**Project Update July 2024**

# M/W/VBE Project Goals and Awards

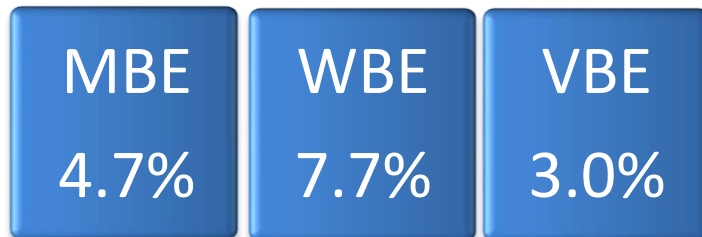
Total GMP  
\$401,558,505

## Contract Goals

MBE	\$18,873,250
WBE	\$30,920,005
VBE	\$12,046,755

## Current Awards

MBE	\$17,532,821
WBE	\$32,997,220
VBE	\$15,188,000





# MBE Participation Paid through DCMS May Audit 2024

Prime
Prime (Filed Sub)
Second tier - M/W/VBE
M/W/VBE Supply ONLY (15% of Subcontract dollar carried towards goal)

			PTD through DCMS May Audit 2024				
Bid Package Description	Prime / Filed Sub	Current Subcontract Value	MBE Paid to Date	Percent to Full Subcontract	Percent to Goal		
Prime Contracts							
Demolition & Abatement - Dorm & Chiller	American Environmental, Inc.		\$ 610,556.00	\$ 580,337.20	95.1%	0.1%	
Demolition & Abatement - Main	*Not yet identified		\$ 2,200,000.00	\$ -	0.0%	0.0%	
Roofing and Flashing	Titan Roofing, Inc.		\$ 3,383,129.00	\$ 47,500.00	1.4%	0.0%	
Tier Packages (Trade-Description)		Tier Subcontractor					
Concrete Prime - Tier 2 Installation of Reinforcing	Regis Steel Corp		\$ 1,215,000.00	\$ 460,297.40	37.9%	0.1%	
Structural Steel - Tier 3 Welding	Trident Production Welding		\$ 850,000.00	\$ -	0.0%	0.0%	
Fireproofing Prime - Tier 2 Labor for Carpentry Fireproofing Support	Triple J Drywall & Carpentry, Inc.		\$ 90,000.00	\$ -	0.0%	0.0%	
Drywall Prime - Tier 2 Furnishing Labor For Carpentry Support	Fisher Contracting Corporation		\$ 1,071,000.00	\$ -	0.0%	0.0%	
Acoustical Tile Prime - Tier 2 Furnishing Labor For Carpentry Support	Triple J Drywall & Carpentry, Inc.		\$ 72,000.00	\$ -	0.0%	0.0%	
Food Service Equipment Prime - Tier 2 Sheetmetal installation	Titan Roofing, Inc.		\$ 100,000.00	\$ -	0.0%	0.0%	
Plumbing Prime - Tier 2 Furnish & Installation of Plumbing Insulation	Kim Industries, Inc.		\$ 1,116,000.00	\$ -	0.0%	0.0%	
HVAC Prime - Tier 2 Material and Field Labor	Kim Industries, Inc.		\$ 3,975,000.00	\$ 28,500.00	0.7%	0.0%	
Electrical Prime - Tier 2 Furnish & Install Systems	KB-Mac, Inc.		\$ 3,032,664.00	\$ -	0.0%	0.0%	
Earthwork Prime - Tier 2 Trucking of Materials To & From the Site	C&C Contractors, LLC		\$ 1,162,000.00	\$ 716,164.25	61.6%	0.2%	
Earthwork Prime - Tier 2 Installation of Reinforcing	Regis Steel Corp		\$ 100,000.00	\$ 37,131.94	37.1%	0.0%	
Earthwork Prime - Tier 2 Furnish & Install Asphalt Paving	Don Martin Corp		\$ 300,000.00	\$ 231,233.19	77.1%	0.1%	
Material Only (Prime Trade-Description)	Material Supplier	Contract Value	15% of Subcontract dollar value				
Ceramic Tile Prime - Tier 2 Furnishing Materials	ST Materials & Equipment, LLC	\$ 150,000.00	\$ 22,500.00	\$ -	0.0%	0.0%	
Plumbing Prime - Tier 2 Furnish Only Plumbing Materials	JHP Industrial Supply Company, Inc.	\$ 986,483.00	\$ 147,972.45	\$ -	0.0%	0.0%	
HVAC Prime -Tier 2 Furnish Only HVAC Materials	Carl-Louis & Co., Inc.	\$ 900,000.00	\$ 135,000.00	\$ -	0.0%	0.0%	
Electrical Prime - Tier 2 Furnish Low Voltage Materials	Certified Connections, Inc.	\$ 1,000,000.00	\$ 150,000.00	\$ -	0.0%	0.0%	
					Percent to Full Subcontract	Percent to Projected Goal	Projected GOAL
			\$ 19,732,821.45	\$ 2,101,163.98	10.6%	0.5%	4.9%

\*\$2,200,000 Not yet identified



**COMMODORE | WALSH**  
HOLYOKE JOINT VENTURE

**Project Update July 2024**

# WBE Participation Paid through DCMS May 2024

Prime
Prime (Filed Sub)
Second tier - M/WVBE
M/WVBE Supply ONLY (15% of Subcontract dollar carried towards goal)

				PTD through DCMS May Audit 2024			
Bid Package Description	Prime / Filed Sub	Current Subcontract Value		WBE Paid to Date	Percent to Full Subcontract	Percent to Goal	
Prime Contracts							
Final Cleaning	Front Line, Inc.		\$ 701,550.00	\$ -	0.0%	0.0%	
Doors, Frames, and Hardware	Thompson Company, Inc.		\$ 5,631,924.00	\$ -	0.0%	0.0%	
Carpet	Ayotte & King for Tile, Inc.		\$ 103,478.00	\$ 37,466.10	0.0%	0.0%	
Window Treatments	Contexture		\$ 2,470,093.00	\$ 109,401.38	4.4%	0.0%	
Resilient Flooring	Ayotte & King for Tile, Inc.		\$ 3,575,000.00	\$ 37,466.10	1.0%	0.0%	
Tier Packages (Trade-Description)	Tier Subcontractor						
Concrete Prime - Tier 2 Furnishing Reinforcing	Rebars & Mesh, Inc.		\$ 1,400,000.00	\$ 714,119.00	51.0%	0.2%	
Steel Prime - Tier 3 Install Shear Connectors	Composite Co., Inc.		\$ 187,610.00	\$ -	0.0%	0.0%	
Millwork Prime - Tier 2 Installation of Millwork	J. Thibert Architectural Woodwork Installation		\$ 1,924,092.00	\$ -	0.0%	0.0%	
Millwork Prime - Tier 2 Labor for loading of materials and clean up	Front Line, Inc.		\$ 937,500.00	\$ -	0.0%	0.0%	
Drywall Prime - Tier 2 Labor For Carpentry Support	Adams and Ruxton Construction Company		\$ 1,755,000.00	\$ -	0.0%	0.0%	
Plumbing Prime - Tier 2 Furnish & Installation of Plumbing Materials	413 Plumbing & Heating, Inc.		\$ 1,620,000.00	\$ 191,393.57	11.8%	0.0%	
HVAC Prime - Tier 2 Furnish & Installation of Sheetmetal Ductwork	L.K. Sheet Metal, Inc.		\$ 5,500,000.00	\$ -	0.0%	0.0%	
Electrical Prime - Tier 2 Furnish & Install Site Lighting	Chapman Construction Group, Inc.		\$ 1,308,394.00	\$ -	0.0%	0.0%	
Electrical Prime - Tier 2 Material and Install Gear and Lighting Package	Seaport Energy Co., Inc.		\$ 2,811,675.00	\$ 195,953.00	7.0%	0.0%	
Earthwork Prime - Tier 2 Furnishing & Installing/ReloTemporary Site Fence	Guardrail Solutions, LLC		\$ 494,975.00	\$ 234,630.12	47.4%	0.1%	
Earthwork Prime - Tier 2 Silt Fence, jute mesh & temp seeding	CSL, Inc.		\$ 142,038.00	\$ 116,640.25	82.1%	0.0%	
Landscaping Prime - Tier 2 Labor and site clean up	Front Line, Inc.		\$ 900,000.00	\$ -	0.0%	0.0%	
Material Only (Prime Trade-Description)	Material Supplier	Contract Value	15% of Subcontract dollar value				
Masonry Prime - Tier 2 Furnish only masonry materials	Architectural Products, Inc.	\$ 750,000.00	\$ 112,500.00	\$ 1,284.86	1.1%	0.0%	
Steel Prime - Tier 3 Furnish only of Safety Screening System	Essential Perimeter	\$ 1,972,250.00	\$ 295,837.50	\$ 127,112.85	43.0%	0.0%	
Curtain Wall, Windows & Panels Prime -Tier 2 Furnish Louvers & Vents	Architectural Products, Inc.	\$ 3,907,941.00	\$ 586,191.15	\$ 86,180.59	14.7%	0.0%	
Painting Prime -Tier 2 Furnish Only Painting Supplies	Heritage Construction & Supply	\$ 156,059.00	\$ 23,408.85	\$ -	0.0%	0.0%	
HVAC Prime - Tier 2 Furnish Only Controls Material	Northeast Controls Panel Fabrication, Inc.	\$ 600,000.00	\$ 90,000.00	\$ -	0.0%	0.0%	
			\$ 425,953.00	\$ 475,647.47	Percent to Full Subcontract	Percent to Projected Goal	Projected GOAL
			\$ 32,997,219.50	\$ 1,637,069.52	5.0%	0.4%	8.2%



**COMMODORE | WALSH**  
HOLYOKE JOINT VENTURE

**Project Update July 2024**



# VBE Participation Paid through DCMS May Audit 2024

Prime
Prime (Filed Sub)
Second tier - M/W/VBE
M/W/VBE Supply ONLY (15% of Subcontract dollar carried towards goal)

		PTD through DCMS May Audit 2024			
Bid Package Description	Prime / Filed Sub	Current Subcontract Value	VBE Paid to Date	Percent to Full Subcontract	Percent to Goal
Management	Commodore Builders	\$ 12,000,000.00	\$ 2,474,294.33	20.6%	0.6%
Prime - Waterproofing and Dampproofing	Superior Caulking & Waterproofing Co., Inc.	\$ 3,188,000.00	\$ 274,645.00	8.6%	0.1%
				Percent to Full Subcontract	Percent to Projected Goal
		\$ 15,188,000.00	\$ 2,748,939.33	18.1%	0.7%
					Projected GOAL
					3.8%

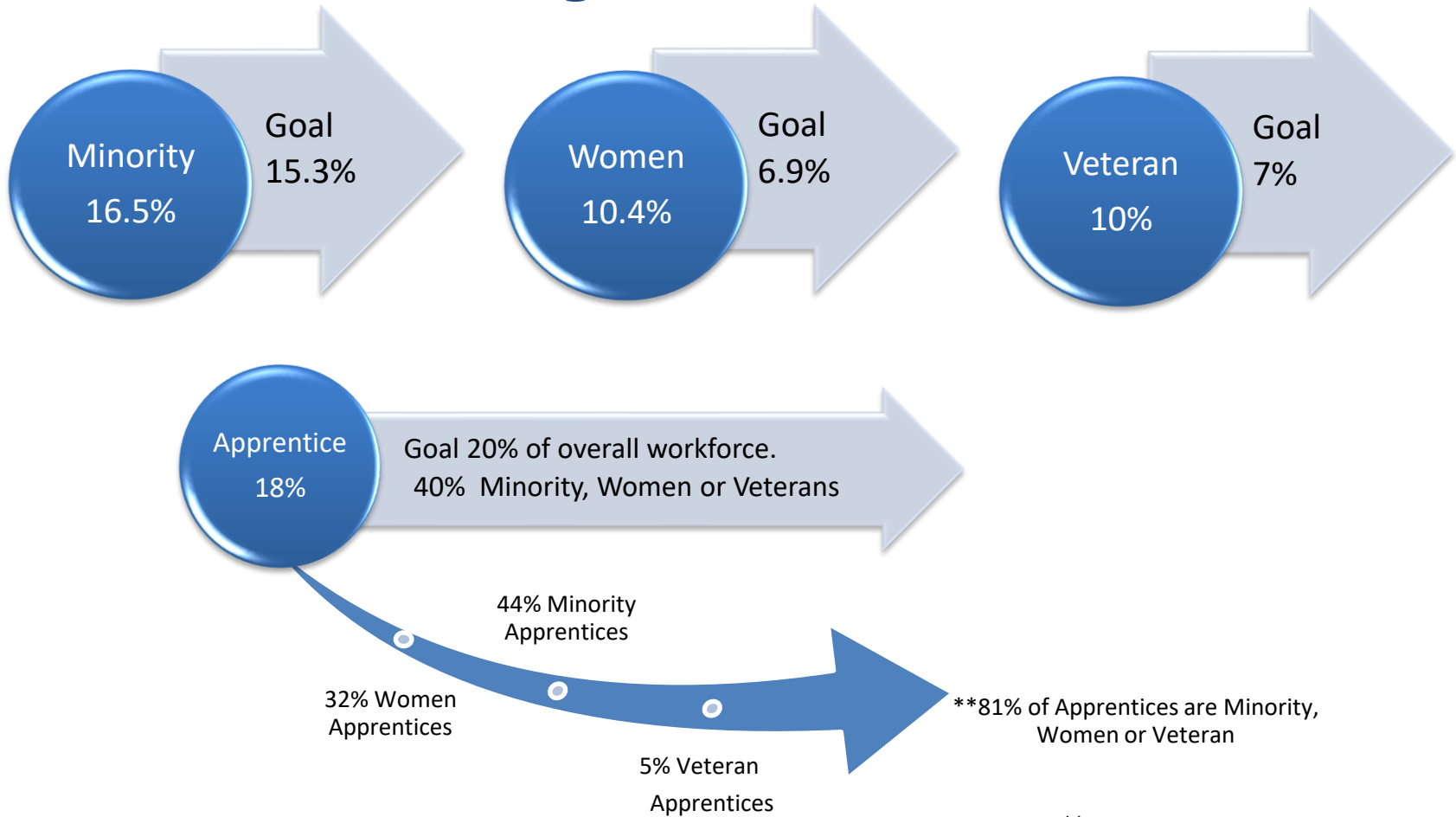


**COMMODORE | WALSH**  
HOLYOKE JOINT VENTURE

**Project Update July 2024**

# Workforce Participation

## \*Percentages as of 06-30-2024



*\*\*Includes women who are also part of a minority group  
\*\*percentages are based on hours reported in DCMS LCPtracker*



**COMMODORE | WALSH**  
HOLYOKE JOINT VENTURE

**Project Update July 2024**



# Workforce Report – June Participation

*Workforce Reporting via DCMS from 6/2/2024 to 6/30/2024													
Tier 1 Contractor	Total Hours	Apprentice Hours			Minority Hours			Women Hours			Veteran Hours		
Tier 2 Contractor			%	Goal		%	Goal		%	Goal		%	Goal
413 Plumbing & Heating Inc.	159.50	101.50	64%	20%	42.00	26.3%	15.3%	-	0.0%	6.90%	16.00	10%	7%
Arden Engineering Constructors, LLC	80.00	-	0%	20%	-	0.0%	15.3%	-	0.0%	6.90%	-	0%	7%
BrandSafway Services LLC, Inc.	48.00	-	0%	20%	-	0.0%	15.3%	-	0.0%	6.90%	-	0%	7%
Brightview Landscape	32.12	-	0%	20%	-	0.0%	15.3%	8.04	25.0%	6.90%	-	0%	7%
Capasso Enterprises Inc.	19.00	-	0%	20%	9.50	50.0%	15.3%	-	0.0%	6.90%	-	0%	7%
Collins Electric Co., Inc.	615.00	112.00	18%	20%	-	0.0%	15.3%	272.00	44.2%	6.90%	158.00	26%	7%
Composite Company, Inc.	118.00	56.00	47%	20%	-	0.0%	15.3%	48.00	40.7%	6.90%	56.00	47%	7%
Harry Grodsky & Co., Inc.	492.00	-	0%	20%	211.00	42.9%	15.3%	-	0.0%	6.90%	-	0%	7%
Keller North America	16.00	-	0%	20%	-	0.0%	15.3%	-	0.0%	6.90%	-	0%	7%
Manafort-Precision, LLC	433.00	-	0%	20%	16.00	3.7%	15.3%	-	0.0%	6.90%	-	0%	7%
Morrow Equipment Company, LLC	595.00	137.00	23%	20%	-	0.0%	15.3%	270.00	45.4%	6.90%	-	0%	7%
Northern Construction Service, LLC	99.00	-	0%	20%	-	0.0%	15.3%	96.00	97.0%	6.90%	-	0%	7%
Northern General Contractors, Inc.	1,689.50	510.50	30%	20%	510.50	30.2%	15.3%	137.00	8.1%	6.90%	152.00	9%	7%
Prime Steel Erecting, Inc.	5,809.00	1,080.00	19%	20%	1,319.00	22.7%	15.3%	459.00	7.9%	6.90%	1,113.00	19%	7%
Professional Drywall Construction, Inc.	48.00	-	0%	20%	-	0.0%	15.3%	-	0.0%	6.90%	-	0%	7%
Regis Steel Corporation	8.00	-	0%	20%	-	0.0%	15.3%	-	0.0%	6.90%	-	0%	7%
Skillings & Sons, Inc.	437.75	-	0%	20%	73.00	16.7%	15.3%	-	0.0%	6.90%	63.00	14%	7%
Superior Caulking & Waterproofing Co., Inc.	179.00	-	0%	20%	8.00	4.5%	15.3%	-	0.0%	6.90%	-	0%	7%
<b>Total for Project:</b>	<b>10,877.87</b>	<b>1,997.00</b>	<b>18%</b>	<b>20%</b>	<b>2,189.00</b>	<b>20.1%</b>	<b>15.3%</b>	<b>1,290.04</b>	<b>11.9%</b>	<b>6.90%</b>	<b>1,558.00</b>	<b>14%</b>	<b>7%</b>
<b>Total for June:</b>	<b>10,877.87</b>	<b>1,997.00</b>	<b>18%</b>	<b>20%</b>	<b>2,189.00</b>	<b>20.1%</b>	<b>15.3%</b>	<b>1,290.04</b>	<b>11.9%</b>	<b>6.9%</b>	<b>1,558.00</b>	<b>14%</b>	<b>7%</b>
<b>Previous Months Total</b>													
<b>Total for May:</b>	<b>6,803.00</b>	<b>1,525.00</b>	<b>22%</b>	<b>20%</b>	<b>1,233.75</b>	<b>18.1%</b>	<b>15.3%</b>	<b>822.00</b>	<b>12.1%</b>	<b>6.9%</b>	<b>1,019.00</b>	<b>15%</b>	<b>7%</b>
<b>Total for April:</b>	<b>6,604.50</b>	<b>1,388.00</b>	<b>21%</b>	<b>20%</b>	<b>1,062.50</b>	<b>16.1%</b>	<b>15.3%</b>	<b>728.50</b>	<b>11.0%</b>	<b>6.9%</b>	<b>689.00</b>	<b>10%</b>	<b>7%</b>

\*The accuracy of this report is dependent on the information reported by the Contractor/Employer.



**COMMODORE | WALSH**  
HOLYOKE JOINT VENTURE

**Project Update July 2024**

# Workforce Participation as of 6-30-2024

*Workforce Reporting via DCSM as 06/30/2024													
Tier 1 Contractor Tier 2 Subcontractor Tier 3 Subcontractor	Total Hours	Apprentice			Minority			Women			Veteran		
		Hours	%	Goal	Hours	%	Goal	Hours	%	Goal	Hours	%	Goal
American Environmental, Inc.	1,279.00	-	0%	20%	434.00	33.9%	15.3%	710.00	55.5%	6.9%	180.00	14%	7%
Arden Engineering Constructors, LLC (includes Plumbing and Fire Protection hours)	1,088.00	280.00	26%	20%	-	0.0%	15.3%	-	0.0%	6.9%	-	0%	7%
413 Plumbing & Heating Inc.	769.50	255.00	33%	20%	42.00	5.5%	15.3%	-	0.0%	6.9%	32.00	4%	7%
M.J.Daly LLC	28.00	-	0%	20%	20.00	71.4%	15.3%	-	0.0%	6.9%	-	0%	7%
BrandSafway Services LLC, Inc.	48.00	-	0%	20%	-	0.0%	15.3%	-	0.0%	6.9%	-	0%	7%
Brightview Landscape	32.12	-	0%	20%	-	0.0%	15.3%	8.04	25.0%	6.9%	-	0%	7%
Capasso Enterprises Inc.	433.50	-	0%	20%	208.50	48.1%	15.3%	-	0.0%	6.9%	-	0%	7%
Chandler Architectural Products, Inc.	593.00	-	0%	20%	-	0.0%	15.3%	-	0.0%	6.9%	-	0%	7%
Collins Electric Co., Inc.	6,244.00	1,079.50	17%	20%	474.50	7.6%	15.3%	1,929.50	30.9%	6.9%	770.00	12%	7%
Harry Grodsky & Co., Inc.	736.50	-	0%	20%	211.00	28.6%	15.3%	-	0.0%	6.9%	-	0%	7%
Automated Logic Contracting Services	69.00	-	0%	20%	-	0.0%	15.3%	-	0.0%	6.9%	-	0%	7%
Les Constructions Beauce-Atlas, Inc.	-	-	0%	20%	-	0.0%	15.3%	-	0.0%	6.9%	-	0%	7%
Prime Steel Erecting, Inc.	9,328.00	1,713.00	18%	20%	2,034.00	21.8%	15.3%	762.00	8.2%	6.9%	1,911.00	20%	7%
Composite Company, Inc.	118.00	56.00	47%	20%	-	0.0%	15.3%	48.00	40.7%	6.9%	56.00	47%	7%
Manafort-Precision, LLC	18,896.00	3,289.50	17%	20%	3,252.00	17.2%	15.3%	1,367.50	7.2%	6.9%	1,944.00	10%	7%
Regis Steel Corporation	5,702.00	1,309.00	23%	20%	1,298.00	22.8%	15.3%	1,325.00	23.2%	6.9%	1,199.00	21%	7%
Northern Construction Service, LLC	250.50	-	0%	20%	-	0.0%	15.3%	96.00	38.3%	6.9%	3.50	1%	7%
CSL, Inc.	376.00	-	0%	20%	108.00	28.7%	15.3%	-	0.0%	6.9%	-	0%	7%
Don Martin Corporation	95.00	-	0%	20%	38.00	40.0%	15.3%	-	0.0%	6.9%	19.00	20%	7%
Guardrail Solutions LLC	938.00	-	0%	20%	332.50	35.4%	15.3%	-	0.0%	6.9%	47.50	5%	7%
Keller North America	4,239.00	704.50	17%	20%	179.00	4.2%	15.3%	-	0.0%	6.9%	281.00	7%	7%
Morrow Equipment Company, LLC	1,114.25	137.00	12%	20%	-	0.0%	15.3%	498.50	44.7%	6.9%	-	0%	7%
Northern General Contractors, Inc.	33,803.50	7,035.00	21%	20%	5,978.00	17.7%	15.3%	2,757.50	8.2%	6.9%	2,647.00	8%	7%
NORTHERN LAND CLEARING LLC	332.50	-	0%	20%	-	0.0%	15.3%	-	0.0%	6.9%	-	0%	7%
Skillings & Sons, Inc.	919.25	-	0%	20%	116.25	12.6%	15.3%	-	0.0%	6.9%	161.50	18%	7%
Professional Drywall Construction, Inc.	231.50	8.00	3%	20%	-	0.0%	15.3%	-	0.0%	6.9%	-	0%	7%
Superior Caulking & Waterproofing Co., Inc.	1,423.50	-	0%	20%	314.50	22.1%	15.3%	-	0.0%	6.9%	-	0%	7%
<b>Total for Project (Chiller &amp; Main):</b>	<b>92,837.93</b>	<b>16,267.50</b>	<b>18%</b>	<b>20%</b>	<b>15,332.28</b>	<b>16.5%</b>	<b>15.3%</b>	<b>9,614.04</b>	<b>10.4%</b>	<b>6.9%</b>	<b>9,251.50</b>	<b>10%</b>	<b>7%</b>

\*The accuracy of this report is dependent on the information reported by the Contractor/Employer



**COMMODORE | WALSH**  
HOLYOKE JOINT VENTURE

**Project Update July 2024**



# Apprentice Workforce Participation as of 6-02-2024

\*Workforce Reporting via DCMS as of 06/30/2024

Contractor	Apprentice					Minority			Women				Veteran				Minority & Women		
	Hours	Count	Count	%	Goal	Hours	%	Goal	Hours	Count	%	Goal	Hours	Count	%	Goal	Hours	Count	%
413 Plumbing & Heating Inc.	255.00	3	100.00%	20%	-	0	0.0%	15.3%	-	0	0.0%	6.9%	0.00	0	0%	7%	0.00	0	0.0%
Arden Engineering Constructors, LLC	280.00	2	100.00%	20%	-	0	0.0%	15.3%	-	0	0.0%	6.9%	0.00	0	0%	7%	0.00	0	0.0%
B-G Mechanical Contractors, Inc.	303.00	1	100.00%	20%	-	0	0.0%	15.3%	-	0	0.0%	6.9%	0.00	0	0%	7%	0.00	0	0.0%
Collins Electric Co., Inc.	1,079.50	14	100.00%	20%	150.00	2	13.9%	15.3%	753.50	3	69.8%	6.9%	40.00	1	4%	7%	0.00	0	0.0%
Composite Company, Inc.	56.00	1	100.00%	20%	-	0	0.0%	15.3%	-	0	0.0%	6.9%	56.00	1	100%	7%	0.00	0	0.0%
Edward F. Corcoran Plumbing & Heating	48.00	1	100.00%	20%	-	0	0.0%	15.3%	-	0	0.0%	6.9%	0.00	0	0%	7%	0.00	0	0.0%
Keller North America	704.50	2	100.00%	20%	-	0	0.0%	15.3%	-	0	0.0%	6.9%	0.00	0	0%	7%	0.00	0	0.0%
Manafort-Precision, LLC	3,289.50	6	100.00%	20%	1,094.00	2	33.3%	15.3%	1,199.00	3	36.4%	6.9%	0.00	0	0%	7%	609.00	1	18.5%
Moran Sheet Metal, Inc.	7.00	1	100.00%	20%	-	0	0.0%	15.3%	-	0	0.0%	6.9%	0.00	0	0%	7%	0.00	0	0.0%
Morrow Equipment Company, LLC	137.00	1	100.00%	20%	-	0	0.0%	15.3%	137.00	1	100.0%	6.9%	0.00	0	0%	7%	0.00	0	0.0%
Northern General Contractors, Inc.	7,035.00	11	100.00%	20%	4,939.00	7	70.2%	15.3%	2,223.00	3	31.6%	6.9%	0.00	0	0%	7%	668.00	1	9.5%
Power Line Contractors, Inc.	10.00	1	100.00%	20%	-	0	0.0%	15.3%	-	0	0.0%	6.9%	0.00	0	0%	7%	0.00	0	0.0%
Prime Steel Erecting, Inc.	1,713.00	10	100.00%	20%	455.00	3	26.6%	15.3%	368.00	1	21.5%	6.9%	232.00	2	14%	7%	0.00	0	0.0%
Professional Drywall Construction, Inc.	8.00	1	100.00%	20%	-	0	0.0%	15.3%	-	0	0.0%	6.9%	0.00	0	0%	7%	0.00	0	0.0%
Regis Steel Corporation	1,309.00	5	100.00%	20%	431.00	1	32.9%	15.3%	584.00	2	44.6%	6.9%	436.00	1	33%	7%	431.00	1	32.9%
William Roberts Electric Co., Inc	33.00	1	100.00%	20%	-	0	0.0%	15.3%	-	0	0.0%	6.9%	0.00	0	0%	7%	0.00	0	0.0%
<b>Total</b>	<b>16,267.50</b>	<b>61</b>	<b>100.00%</b>	<b>20%</b>	<b>7,069.00</b>	<b>15</b>	<b>43.5%</b>	<b>15.3%</b>	<b>5,264.50</b>	<b>13</b>	<b>32.4%</b>	<b>6.9%</b>	<b>764.00</b>	<b>5</b>	<b>5%</b>	<b>7%</b>	<b>1,708.00</b>	<b>3</b>	<b>10.5%</b>

Total Hours (Chiller & Main)

92,837.93

\*The accuracy of this report is dependent on the information reported by the Contractor/Employer

Hours included in  
both Women and  
Minority goals



**COMMODORE | WALSH**  
HOLYOKE JOINT VENTURE

**Project Update July 2024**

# Tours/Workforce Development



Commodore Builders Summer 2024 Interns Visit Job Site



**COMMODORE | WALSH**  
HOLYOKE JOINT VENTURE

**Project Update July 2024**



# Outreach Events



## Massachusetts Public Construction Opportunities

Find out what contractors, subcontractors, and suppliers interested in working on public building construction projects need to know. Opportunities on projects of all sizes and dollar values.

DATE(S):	January 24, 2024	2:00 p.m. - 3:30 p.m.
	April 9, 2024	11:00 a.m. - 12:30 p.m.
	June 12, 2024	2:00 p.m. - 3:30 p.m.
	September 10, 2024	11:00 a.m. - 12:30 p.m.
	November 20, 2024	10:00 a.m. - 11:30 a.m.
COST:	Free	
LOCATION:	Virtual - Zoom Meeting information sent when registered	
REGISTRATION:	<a href="https://www.eventbrite.com/e/771827345367?aff=oddtcreator">https://www.eventbrite.com/e/771827345367?aff=oddtcreator</a>	

A presentation for firms considering working on public building construction projects will provide a wealth of information on how your firm can get involved in public building projects. Presented by the Division of Capital Asset Management and Maintenance (DCAMM), the state agency responsible for the state's major building construction, and the Supplier Diversity Office (SDO), the state agency that certifies small, minority, women, and veteran owned business to work on public projects.

### We'll

#### Cover:

- How to find upcoming opportunities to provide construction related services on the thousands of public building construction projects procured by state agencies, cities, and towns each year;
- What you need to know to bid on public construction work, which projects and trades don't require DCAMM certification, which do, and how to apply;
- Firms owned by a small, minority, woman or veteran are strongly encouraged to attend to learn about the significant opportunities for small, minority owned (MBE), women owned (WBE) and veteran owned (VBE/SDVOBE) businesses, the Supplier Diversity Office certifications and the process for SDO certification.

Opportunities to work on state agency and municipal projects throughout Massachusetts.

Join us - construction contractors, subcontractors, and suppliers are all invited!

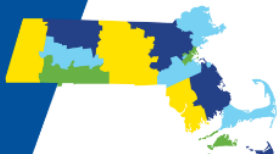


**COMMODORE | WALSH**  
HOLYOKE JOINT VENTURE

**Project Update July 2024**

# Outreach Events

## TRADES STATE CONTRACT OPPORTUNITIES



### ATTENTION TRADESPERSONS

*This is your opportunity to be awarded a spot on a Statewide Contract!*

The Operational Services Division (OSD), the agency that establishes and manages Statewide Contracts (SWCs) for the Commonwealth of Massachusetts, has announced the reopening of our [Tradespersons](#) (TRD) Statewide Contracts.

The Commonwealth offers 29 Trades service categories (see right panel) across four Tradespersons Contracts. [TRD01](#) and [TRD03](#) will reopen in May 2024, and [TRD02](#) and [TRD04](#) will reopen in late summer/ early fall 2024. The reopening of these contracts will fill out services categories that currently have insufficient coverage across the state and provide opportunities for trades businesses to work with the state.

#### Why Work with the State?

Statewide Contractor status gives businesses the opportunity to expand their customer base by having their business listed in the state's [Trades Index](#). Organizations eligible to use SWCs include Executive Departments, cities and towns, public schools, housing authorities, and many others.

#### Next Steps

There are three actions you need to take to express interest in a Statewide Contract bid:

- ✓ **Get Registered!**  
Set up your free business profile in COMMBUYS by registering at [COMMBUYS.com](#).
  - Find [registration guidance](#) on our website.
  - In your business profile, select at least one commodity code(s) that identifies the services your business offers. The commodity codes associated with our Trades contracts are listed on the reverse side for your reference. Adding related commodity codes to your profile will prompt email notifications from COMMBUYS once the Trades opportunities are posted.
- ✓ **Review the Bid Opportunity**  
Once the Request for Response (RFR) documents are posted in COMMBUYS, review the documents in detail.
  - [TRD01: BD-24-1080-OSD03-OSD03-99499](#)
  - [TRD02: BD-24-1080-OSD03-OSD03-98815](#)
  - [TRD03: BD-24-1080-OSD03-SRC02-99870](#)
  - [TRD04: BD-24-1080-OSD03-SRC02-98164](#)
- ✓ **Submit a Quote**  
Read the RFR thoroughly, collect the required information, and log in to COMMBUYS to submit your quote before the date/ time deadline. Qualified vendors are awarded a spot on the Statewide Contract.

#### We're Here to Help!

Visit [mass.gov/trades](#) to learn more

Attend [Free Vendor Training](#)

[Steps to Consider If You're Interested in Statewide Contracting](#)



#### Tradespersons Contracts

##### TRD01 Contract Categories

Boiler  
Drain  
Electrical  
Fencing  
General Contracting  
Generator/Turbines  
Glass/Window/Doors  
HVAC/Sheet Metal  
Painting  
Plumbing  
Solar Array Inspection

##### TRD02 Contract Categories

Asphalt Paving  
Carpentry  
Excavation  
Masonry  
Septic

##### TRD03 Contract Categories

Elevator  
Exhaust Systems  
Fire Detection  
Fire Suppression  
Overhead Doors  
Signage  
Welding

##### TRD04 Contract Categories

Cleaning Restoration  
Compressor Services  
Kitchen Exhaust/Duct  
Pump & Motor  
Roofing  
Biohazardous Site Cleaning

[mass.gov/trades](#)

#### Contact Us!

Monday - Friday,  
8:00 a.m. to 5:00 p.m.  
888-MA-STATE (627-8283)  
or [OSDHelpDesk@mass.gov](#)

## Trades UNSPSC

##### TRD01

Boiler (72-15-10)  
Drain (70-17-18)  
Electrical (72-15-15)  
Fencing (72-15-40)  
General Contracting (72-11-11)  
Generator/Turbines (72-15-43)  
Glass/Window/Doors (72-15-24)  
HVAC/Sheet Metal (72-15-12)  
Painting (72-15-13)  
Plumbing (72-15-11)  
Solar Array Inspection (72-15-12)

##### TRD02

Asphalt Paving (72-14-10)  
Carpentry (72-15-23)  
Excavation (72-15-00)  
Masonry (72-15-19)  
Septic (72-15-11)

##### TRD03

Elevator (72-10-15)  
Exhaust Systems (40-10-15)  
Fire Detection (46-19-15)  
Fire Suppression (46-19-16)  
Overhead Doors (72-15-24)  
Signage (72-15-40)  
Welding (73-18-19)

##### TRD04

Cleaning Restoration (76-11-00)  
Compressor (40-15-18)  
Kitchen Exhaust/Duct (72-15-00)  
Pump & Motor (40-15-17)  
Roofing (72-13-00)  
Biohazardous Site Cleaning (76-10-00)



#### What is UNSPSC?

The Commonwealth uses the United Nations Standard Products and Services Code (UNSPSC), similar to a commodity code, to classify goods and services. When the UNSPSC in a vendor's COMMBUYS profile matches the UNSPSC in a bid opportunity, the vendor receives an automatic email notification.

#### Where and how do I use UNSPSC?

##### 1. Registration

During COMMBUYS registration, new vendors must add at least one UNSPSC to their profile on the Commodity/Service Codes tab. For TRD contracts, add the codes of the categories that match the goods and services your business provides. You may add as many codes to your profile as you like; however, doing so adds you to the notification pool of entities seeking those commodities.

##### 2. Searching for bid opportunities

Vendors may search through all bid opportunities posted on COMMBUYS using the Bid Solicitation Advanced Search function on the COMMBUYS home screen. By entering the appropriate UNSPSC, vendors may search for opportunities related to their businesses.

#### Help! I'm lost!

If you get stuck at any point in the COMMBUYS registration or bid search process, contact the COMMBUYS Help Desk! From 8:00 a.m. to 5:00 p.m., Monday through Friday, they are here to help.

Contact the Help Desk at [OSDHelpDesk@mass.gov](#) or (888) MA-STATE (627-8283).



March 2024

Operational Services Division

One Ashburton Place, Suite 1608 | Boston, MA 02108 | 617-720-3300 | [www.mass.gov/osd](#)



**COMMODORE | WALSH**  
HOLYOKE JOINT VENTURE

**Project Update July 2024**



# QUESTIONS



**COMMODORE | WALSH**  
HOLYOKE JOINT VENTURE

**Project Update July 2024**