



Holyoke Veterans' Home Access, Inclusion & Diversity Committee

Project Update

April 2025



DIVISION OF
CAPITAL ASSET
MANAGEMENT &
MAINTENANCE

Agenda

Project Updates

- Project/Schedule Update
- Work in Progress
- Project MBE/WBE Participation Plan
- Project VBE Participation Plan
- Business Participation Payment Report
- Workforce Hours Report
- Ongoing Outreach
- Questions



Phase 1 Milestone Schedule

Scope	Planned
Temp Weather Tight (Level 2-5)	2/21/2025
Temp Weather Tight (Level 2 & Above)	7/10/2025
Permanent Power Available	9/16/2025
Building Weather Tight	1/30/2026
MDFs and IDFs Turned over to Owner	5/8/2026
Owner's Network Availability	7/8/2026
Complete Fire Alarm Testing	7/28/2026
Start FF&E	9/8/2026
Certificate of Occupancy	11/2/2026
Phase 1 Substantial Completion	11/9/2026



Work in Progress – Overall Site



COMMODORE | WALSH
HOLYOKE JOINT VENTURE

Work in Progress – Gas Line installation from Fairmont to utility enclosure



Work in Progress – Window installation unitized and stick built curtainwall



Work in Progress – MEP Installation ongoing (Up to level 4)



Work in Progress – Roof well and roofing mobilization



Window Installation – Masonry installation at the South façade continues



Project MBE/WBE Participation Plan

Total GMP
\$401,558,505

Contract Goals
MBE \$18,873,250
WBE \$30,920,005

Current Awards
MBE \$17,942,041
WBE \$32,006,370

MBE
4.7%

WBE
7.7%

MBE
4.5%

WBE
8.0%



Total GMP
\$401,558,505

Contract Goals
VBE \$12,046,755

VBE
3.0%

Current Awards
VBE \$15,197,900

VBE
3.8%

MBE Participation – Paid through DCMS February Audit 2025

Bid Package Description	Prime / Filed Sub		Current Subcontract Value	MBE Paid to Date	Percent to Full Subcontract	Percent to Goal
Prime Contracts						
Demolition & Abatement - Dorm & Chiller	American Environmental, Inc.		\$ 610,776.00	\$ 601,298.20	98.4%	0.1%
Demolition & Abatement - Main	<i>Not yet identified</i>		\$ -	\$ -	0.0%	0.0%
Roofing and Flashing	Titan Roofing, Inc.		\$ 3,383,129.00	\$ 110,200.00	3.3%	0.0%
Tier Packages (Trade-Description)	Tier Subcontractor					
Concrete Prime - Tier 2 Installation of Reinforcing	Regis Steel Corp		\$ 1,215,000.00	\$ 889,586.35	73.2%	0.2%
Structural Steel - Tier 3 Welding	Trident Production Welding		\$ 850,000.00	\$ 765,000.00	90.0%	0.2%
Fireproofing Prime - Tier 2 Labor for Carpentry Fireproofing Support	Triple J Drywall & Carpentry, Inc.		\$ 90,000.00	\$ 90,000.00	100.0%	0.0%
Drywall Prime - Tier 2 Furnishing Labor For Taping/Carpentry Support	Scorpions Contracting, Inc.		\$ 23,650.00	\$ 23,650.00	100.0%	100.0%
Drywall Prime - Tier 2 Furnishing Labor For Taping	American Finish Systems, Inc.		\$ 1,480,000.00	\$ -	0.0%	0.0%
Acoustical Tile Prime - Tier 2 Furnishing Labor For Carpentry Support	Triple J Drywall & Carpentry, Inc.		\$ 72,000.00	\$ -	0.0%	0.0%
Food Service Equipment Prime - Tier 2 Sheetmetal installation	Titan Roofing, Inc.		\$ 100,000.00	\$ -	0.0%	0.0%
Plumbing Prime - Tier 2 Furnish & Installation of Plumbing Insulation	Kim Industries, Inc.		\$ 1,116,000.00	\$ -	0.0%	0.0%
HVAC Prime - Tier 2 Material and Field Labor	Kim Industries, Inc.		\$ 3,975,000.00	\$ 85,500.00	2.2%	0.0%
Electrical Prime - Tier 2 Furnish & Install Systems	KB-Mac, Inc.		\$ 3,032,664.00	\$ -	0.0%	0.0%
Earthwork Prime - Tier 2 Trucking of Materials To & From the Site	C&C Contractors, LLC		\$ 1,162,000.00	\$ 852,601.25	73.4%	0.2%
Earthwork Prime - Tier 2 Installation of Reinforcing	Regis Steel Corp		\$ 100,000.00	\$ 45,318.56	45.3%	0.0%
Earthwork Prime - Tier 2 Furnish & Install Asphalt Paving	Don Martin Corp		\$ 300,000.00	\$ 369,437.57	123.1%	0.1%
Material Only (Prime Trade-Description)	Material Supplier	Current Subcontract Value	15% of Subcontract dollar value for credit			
Ceramic Tile Prime - Tier 2 Furnishing Materials	ST Materials & Equipment, LLC	\$ 150,000.00	\$ 22,500.00	\$ -	0.0%	0.0%
Plumbing Prime - Tier 2 Furnish Only Plumbing Materials	JHP Industrial Supply Company, Inc.	\$ 986,483.00	\$ 147,972.45	\$ 48,228.30	32.6%	0.0%
HVAC Prime -Tier 2 Furnish Only HVAC Materials	Carl-Louis & Co., Inc.	\$ 900,000.00	\$ 135,000.00	\$ 49,656.32	36.8%	0.0%
Electrical Prime - Tier 2 Furnish Low Voltage Materials	Certified Connections, Inc.	\$ 1,000,000.00	\$ 150,000.00	\$ -	0.0%	0.0%
					Percent to Full Subcontract	Percent to Projected Goal
			\$ 17,965,691.45	\$ 3,832,591.93	21.3%	1.0%
					Projected GOAL	4.5%



WBE Participation – Paid through DCMS February Audit 2025

Bid Package Description	Prime / Filed Sub		Current Subcontract Value	WBE Paid to Date	Percent to Full Subcontract	Percent to Goal
Prime Contracts						
Final Cleaning	Front Line, Inc.		\$ 701,550.00	\$ -	0.0%	0.0%
Doors, Frames, and Hardware	Thompson Company, Inc.		\$ 5,631,924.00	\$ 162,168.61	2.9%	0.0%
Carpet	Ayotte & King for Tile, Inc.		\$ 103,478.00	\$ 55,801.10	53.9%	0.0%
Window Treatments	Contexture		\$ 2,470,093.00	\$ 251,462.48	10.2%	0.1%
Resilient Flooring	Ayotte & King for Tile, Inc.		\$ 3,575,000.00	\$ 41,572.00	1.2%	0.0%
Tier Packages (Trade-Description)	Tier Subcontractor					
Concrete Prime - Tier 2 Furnishing Reinforcing	Rebars & Mesh, Inc.		\$ 1,400,000.00	\$ 1,249,162.50	89.2%	0.3%
Steel Prime - Tier 3 Install Shear Connectors	Composite Co., Inc.		\$ 187,610.00	\$ 162,992.60	86.9%	0.0%
Millwork Prime - Tier 2 Installation of Millwork	J. Thibert Architectural Woodwork Installation		\$ 1,924,092.00	\$ -	0.0%	0.0%
Millwork Prime - Tier 2 Labor for loading of materials and clean up	Front Line, Inc.		\$ 937,500.00	\$ -	0.0%	0.0%
Drywall Prime - Tier 2 Labor For Carpentry Support	Adams and Ruxton Construction Company		\$ 725,000.00	\$ 17,980.86	2.5%	0.0%
Drywall Prime - Tier 2 Labor For Carpentry Support	Advanced Scaffold Services of N.E. LLC		\$ 39,250.00	\$ 11,286.00	28.8%	0.0%
Plumbing Prime - Tier 2 Furnish & Installation of Plumbing Materials	413 Plumbing & Heating, Inc.		\$ 1,620,000.00	\$ 497,929.11	30.7%	0.1%
HVAC Prime - Tier 2 Furnish & Installation of Sheetmetal Ductwork	L.K. Sheet Metal, Inc.		\$ 5,500,000.00	\$ 977,438.94	17.8%	0.2%
Electrical Prime - Tier 2 Furnish & Install Site Lighting	Chapman Construction Group, Inc.		\$ 1,308,394.00	\$ -	0.0%	0.0%
Electrical Prime - Tier 2 Material and Install Gear and Lighting Package	Seaport Energy Co., Inc.		\$ 2,811,675.00	\$ 1,902,274.34	67.7%	0.5%
Earthwork Prime - Tier 2 Furnishing & Installing/ReloTemporary Site Fence	Guardrail Solutions, LLC		\$ 494,875.00	\$ 290,615.92	58.7%	0.1%
Earthwork Prime - Tier 2 Silt Fence, jute mesh & temp seeding	CSL, Inc.		\$ 142,038.00	\$ 128,664.20	90.6%	0.0%
Landscaping Prime - Tier 2 Labor and site clean up	Front Line, Inc.		\$ 900,000.00	\$ -	0.0%	0.0%
Material Only (Prime Trade-Description)	Material Supplier	Contract Value	15% of Subcontract dollar value for credit			
Masonry Prime - Tier 2 Furnish only masonry materials	Architectural Products, Inc.	\$ 750,000.00	\$ 112,500.00	\$ 12,676.03	11.3%	0.0%
Steel Prime - Tier 3 Furnish only of Safety Screening System	Essential Perimeter	\$ 1,972,250.00	\$ 295,837.50	\$ 310,426.65	104.9%	0.1%
Curtain Wall, Windows & Panels Prime -Tier 2 Furnish Louvers & Vents	Architectural Products, Inc.	\$ 3,907,941.00	\$ 586,191.15	\$ 464,689.54	79.3%	0.1%
Painting Prime -Tier 2 Furnish Only Painting Supplies	Heritage Construction & Supply	\$ 156,059.00	\$ 23,408.85	\$ -	0.0%	0.0%
HVAC Prime - Tier 2 Furnish Only Controls Material	Northeast Controls Panel Fabrication. Inc.	\$ 600,000.00	\$ 90,000.00	\$ 7,500.00	8.3%	0.0%
					Percent to Full Subcontract	Percent to Projected Goal
			\$ 32,006,369.50	\$ 7,020,288.35	21.9%	1.7%
					Projected GOAL	8.0%



VBE Participation – Paid through DCMS February Audit 2025

Bid Package Description	Prime / Filed Sub	Current Subcontract Value	VBE Paid toDate	Percent to Full Subcontract	Percent to Goal
Management	Commodore Builders	\$ 12,000,000.00	\$ 5,392,232.37	44.9%	1.3%
Prime - Waterproofing and Dampproofing	Superior Caulking & Waterproofing Co., Inc.	\$ 3,188,000.00	\$ 872,917.00	27.4%	0.2%
				Percent to Full Subcontract	Percent to Projected Goal
		\$ 15,188,000.00	\$ 6,265,149.37	41.3%	1.6%
				Projected GOAL	3.8%



Workforce Participation - *Percentages as of 03-30-2025

Goal	All Workers	Minority 15.3%	Women 6.9%	Veterans 7%
Reported Hours	312,912.59	74,908.28	32,216.63	27,307.25
% percent	N/A	23.9%	10.3%	8.7%

Goal	Apprentice 20%	** Minority, Women, Veteran Apprentices. 40% of 20% Apprentices
Reported Hours	61,907.59	44,290.25
% percent	19.8%	More than 40%

Goal – 40% of 20% Apprentices	Minority Apprentices	*Women Apprentices	Veteran Apprentices	Minority & Women Apprentices
Reported Hours	23,034.00	18,498.75	2,757.50	6,501.50
% percent	37.2%	29.9%	4.5%	10.5%

** Includes women who are also part of a minority group.
 * Percentages are based on hours reported in DCMS LCPtracker



Workforce Participation March 2025 (1 of 2)

Division	Description	Tier 1 Contractor	Total Hours	Apprentice Goal 20%		Minority Goal 15.3%		Women Goal 6.9%		Veteran Goal 7%	
				Hours	%	Hours	%	Hours	%	Hours	%
Division 01	Scaffolding	BrandSafway Services LLC, Inc.	1,076.00	521.00	48.4%	573.00	53.3%	174.00	16.2%	-	0%
Division 06	Rough Carpentry	Charles Services & Equipment	1,697.00	532.00	31.3%	670.00	39.5%	332.00	19.6%	211.00	12%
Division 03	Cast-In-Place Concrete	Manafort-Precision, LLC	242.00	29.00	12.0%	69.00	28.5%	29.00	12.0%	-	0%
Division 03	Concrete Reinforcing	Regis Steel Corporation	16.00	-	0.0%	-	0.0%	-	0.0%	8.00	50%
Division 03	Cast-In-Place Concrete	Manafort + Tiers Aggregate:	258.00	29.00	11.2%	69.00	26.7%	29.00	11.2%	8.00	3%
Division 04	Masonry	Capasso Enterprises Inc.	1,862.50	184.50	9.9%	709.00	38.1%	-	0.0%	85.50	5%
Division 05	Structural Steel	Les Constructions Beauce Atlas, Inc.	-	-	0.0%	-	-	-	-	-	-
Division 05	Structural Steel	Prime Steel Erecting, Inc.	1,126.00	252.00	22.4%	41.00	3.6%	-	0.0%	16.00	1%
Division 05	Structural Steel	Trident Production Welding, Inc.	96.00	-	0.0%	96.00	100.0%	-	0.0%	-	0%
Division 05	Structural Steel	Beauce + Tiers Aggregate:	1,222.00	252.00	20.6%	137.00	11.2%	0.00	0.0%	16.00	1%
Division 05	Misc. Metals	Quinn Brothers of essex, Inc.	165.00	-	0.0%	55.00	33.3%	55.00	33.3%	-	0%
Division 07	Fireproofing	H Carr & Sons, Inc	646.50	-	0.0%	392.50	0.61	-	-	-	-
Division 07	Waterproofing and Dampproofing	Superior Caulking & Waterproofing Co., Inc.	907.00	-	0.0%	195.00	21.5%	-	0.0%	-	0%
Division 07	Roofing and Flashing	Titan Roofing, Inc.	23.00	-	0.0%	14.00	60.9%	-	0.0%	-	0%
Division 08	Glass & Glazing	Chandler Architectural Products, Inc.	2,517.50	401.50	15.9%	513.50	20.4%	337.50	13.4%	666.00	26%
Division 09	Resinous Flooring	Allegheny Contract Flooring, Inc.	80.00	-	0.0%	32.00	40.0%	-	0.0%	-	0%
Division 09	Drywall	Professional Drywall Construction, Inc.	3,467.50	910.00	26.2%	1,573.00	45.4%	480.00	13.8%	247.00	7%
Division 09	Window Blocking/Clean Up	Adams & Ruxton Construction Co.	556.50	119.00	21.4%	318.00	57.1%	119.00	21.4%	-	0%
Division 09	Taping	American Finish Systems, Inc.	225.00	-	0.0%	225.00	100.0%	-	0.0%	-	0%
Division 09	Drywall	PDC + Tiers Aggregate:	4,249.00	1,029.00	24.2%	2,116.00	49.8%	599.00	14.1%	247.00	6%



Workforce Participation March 2025 (2 of 2)

Division	Description	Tier 1 Contractor	Total Hours	Apprentice Goal 20%		Minority Goal 15.3%		Women Goal 6.9%		Veteran Goal 7%	
				Hours	%	Hours	%	Hours	%	Hours	%
Division 11	Appliances/Food Service	Singer MA, LLC dba Singer Kittredge	2.00	-	0.0%	-	0.0%	-	0.0%	-	0%
Division 22	Plumbing	Arden Engineering Constructors, LLC	5,870.50	1,106.50	18.8%	709.00	12.1%	341.00	5.8%	208.50	4%
Division 22	Plumbing	M.J.Daly LLC	164.00	-	0.0%	164.00	100.0%	-	0.0%	-	0%
Division 21	Fire Protection and Division 22 Plumbing	Arden + Tiers Aggregate:	6,034.50	1,106.50	18.3%	873.00	14.5%	341.00	5.7%	208.50	3%
Division 23	HVAC	Harry Grodsky & Co., Inc.	3,137.00	702.50	22.4%	380.00	12.1%	180.50	5.8%	171.00	5%
Division 23	HVAC Insulation	Kim Industries Inc	344.00	-	0.0%	32.00	9.3%	-	0.0%	-	0%
Division 23	HVAC Sheetmetal Work	LK Sheetmetal	2,351.50	780.50	33.2%	729.50	31.0%	544.00	23.1%	160.00	7%
Division 23	HVAC	Automated Logic Contracting Services	8.00	-	0.0%	-	0.0%	-	0.0%	-	0%
Division 23	HVAC	William Roberts Electric Co., Inc	574.50	120.00	20.9%	120.00	20.9%	-	0.0%	-	0%
Division 23	HVAC	Grodsky + Tiers Aggregate:	6,415.00	1,603.00	25.0%	1,261.50	19.7%	724.50	11.3%	331.00	5%
Division 26	Electrical / Low Voltage	Collins Electric Co., Inc.	3,701.00	1,161.00	31.4%	813.00	22.0%	685.00	18.5%	537.50	15%
Division 31	Earthwork	Northern Construction Service, LLC	2.00	-	0.0%	-	0.0%	-	0.0%	-	0%
Division 31	Earthwork	Northern General Contractors, Inc.	285.00	88.00	30.9%	-	0.0%	-	0.0%	-	0%
Division 31	Earthwork	Northern + Tiers Aggregate:	287.00	88.00	30.7%	0.00	0.0%	0.00	0.0%	0.00	0%
Division 41	Cranes	Marr Crane & Rigging	434.00	-	0.0%	159.50	36.8%	225.50	52.0%	-	0%
			31,585.00	6,907.50	21.9%	8,583.00	27.2%	3,502.50	11.1%	2,310.50	7.3%



Workforce Participation as of 03/30/2025 (1 of 2)

Division	Description	Tier 1 Contractor	Tier 2 or 3 Contractor	Total Hours	Apprentice Goal 20%		Minority Goal 15.3%		Women Goal 6.9%		Veteran Goal 7%	
					Hours	%	Hours	%	Hours	%	Hours	%
Division 01	Scaffolding	BrandSafway Services LLC, Inc.		10,486.50	2,336.50	22.3%	4,621.50	44.1%	821.00	7.8%	296.50	3%
Division 06	Rough Carpentry	Charles Services & Equipment		10,258.50	3,057.00	29.8%	4,556.00	44.4%	1,878.00	18.3%	1,109.50	11%
Division 03	Cast-In-Place Concrete	Manafort-Precision, LLC		33,340.50	4,508.50	13.5%	6,605.50	19.8%	2,340.00	7.0%	3,442.50	10%
Division 03	Concrete Reinforcing	Manafort-Precision, LLC	Regis Steel Corporation	9,035.00	1,509.00	16.7%	1,820.00	20.1%	1,929.00	21.4%	1,735.00	19%
Division 03	Cast-In-Place Concrete			42,375.50	6,017.50	14.2%	8,425.50	19.9%	4,269.00	10.1%	5,177.50	12%
Division 04	Masonry	Capasso Enterprises Inc.		3,494.50	350.50	10.0%	1,351.50	38.7%	173.50	5.0%	112.00	3%
Division 05	Structural Steel	Les Constructions Beauce Atlas, Inc.		-	-	0.0%	-	-	-	-	-	-
Division 05	Structural Steel	Les Constructions Beauce Atlas, Inc.	McGregor Industries Inc	1,176.00	-	0.0%	328.00	27.9%	328.00	27.9%	-	0%
Division 05	Structural Steel	Les Constructions Beauce Atlas, Inc.	Prime Steel Erecting, Inc.	49,801.00	10,590.50	21.3%	10,603.00	21.3%	2,782.50	5.6%	6,212.00	12%
Division 41	Cranes	Les Constructions Beauce Atlas, Inc. / Prime Steel Erecting, Inc.	Morrow Equipment Company, LLC	4,302.50	1,143.00	26.6%	-	0.0%	2,021.50	47.0%	-	0%
Division 05	Structural Steel	Les Constructions Beauce Atlas, Inc. / Prime Steel Erecting, Inc.	Composite Company, Inc.	1,021.00	136.00	13.3%	-	0.0%	-	0.0%	136.00	13%
Division 05	Structural Steel	Les Constructions Beauce Atlas, Inc. / Prime Steel Erecting, Inc.	Trident Production Welding, Inc.	6,049.00	-	0.0%	5,518.00	91.2%	-	0.0%	-	0%
Division 05	Structural Steel			62,349.50	11,869.50	19.0%	16,449.00	26.4%	5,132.00	8.2%	6,348.00	10%
Division 05	Misc. Metals			165.00	0.00	0.0%	55.00	33.3%	55.00	33.3%	0.00	0.0%
Division 09	Acoustical Tile Ceilings	H Carr & Sons, Inc		3,631.00	89.00	2.5%	2,173.50	59.9%	-	0.0%	32.00	1%
Division 07	Fireproofing	H Carr & Sons, Inc	Triple J Drywall and Carpentry, Inc.	659.50	510.00	77.3%	-	0.0%	40.00	6.1%	-	0%
Division 07 Fireproofing and 09 ACT				4,290.50	599.00	14.0%	2,173.50	50.7%	40.00	0.9%	32.00	1%
Division 07	Waterproofing and Dampproofing	Superior Caulking & Waterproofing Co., Inc.		3,501.50	-	0.0%	819.50	23.4%	-	0.0%	-	0%
Division 07	Roofing and Flashing	Titan Roofing, Inc.		95.75	30.00	31.3%	77.00	80.4%	2.00	2.1%	-	0%
Division 08	Glass & Glazing	Chandler Architectural Products, Inc.		7,520.00	1,210.00	16.1%	1,417.00	18.8%	799.00	10.6%	2,165.50	29%
Division 09	Resinous Flooring	Allegheny Contract Flooring, Inc.		80.00	-	0.0%	32.00	40.0%	-	0.0%	-	0%
Division 09	Drywall	Professional Drywall Construction, Inc.		22,330.00	4,598.00	20.6%	7,441.00	33.3%	2,948.50	13.2%	2,389.50	11%
Division 09	Window Blocking/Clean Up	Professional Drywall Construction, Inc.	Adams & Ruxton Construction Co.	1,269.00	303.00	23.9%	555.00	43.7%	135.00	10.6%	-	0%
Division 09	Taping	Professional Drywall Construction, Inc.	Scorpions Contracting, Inc.	268.00	-	0.0%	224.00	83.6%	-	0.0%	-	0%
Division 09	Taping	Professional Drywall Construction, Inc.	American Finish Systems	225.00	-	0.0%	225.00	100.0%	-	0.0%	-	0%
Division 09	Taping	Professional Drywall Construction, Inc.	Connecticut Drywal Finishing	24.00	-	0.0%	-	0.0%	-	0.0%	-	0%
Division 09	Drywall/Insulation	Professional Drywall Construction, Inc.	Acoustical Thermal Insulators, Inc.	-	-	0.0%	-	0.0%	-	0.0%	-	0%
Division 01	Scaffolding	Professional Drywall Construction, Inc.	Advanced Scaffold Services of NE	82.00	-	0.0%	41.00	50.0%	-	0.0%	-	0%
Division 09	Drywall			24,198.00	4,901.00	20.3%	8,486.00	35.1%	3,083.50	12.7%	2,389.50	10%



Workforce Participation as of 03/30/2025 (2 of 2)

Division	Description	Tier 1 Contractor	Tier 2 or 3 Contractor	Total Hours	Apprentice Goal 20%		Minority Goal 15.3%		Women Goal 6.9%		Veteran Goal 7%	
					Hours	%	Hours	%	Hours	%	Hours	%
Division 21	Fire Protection	Arden Engineering Constructors, LLC		-	-	0.0%	-	-	-	-	-	-
Division 22	Plumbing	Arden Engineering Constructors, LLC		25,599.00	5,736.00	22.4%	2,920.00	11.41%	1,163.00	4.54%	1,745.50	6.82%
Division 22	Plumbing	Arden Engineering Constructors, LLC	413 Plumbing & Heating Inc.	1,187.50	431.00	36.3%	114.00	9.6%	-	0.0%	32.00	3%
Division 22	Plumbing	Arden Engineering Constructors, LLC	M.J.Daly LLC	1,401.50	-	0.0%	1,393.50	99.4%	-	0.0%	-	0%
Division 22	Plumbing Insulation	Arden Engineering Constructors, LLC	Kim Industries Inc	-	-	0.0%	-	0.0%	-	0.0%	-	0%
Division 21	Fire Protection and Division 22 Plumbing			28,188.00	6,167.00	21.9%	4,427.50	15.7%	1,163.00	4.1%	1,777.50	6%
Division 23	HVAC			30,732.50	8,371.50	27.2%	7,875.50	25.6%	2,942.50	9.6%	1,440.00	5%
Division 26	Electrical / Low Voltage	Collins Electric Co., Inc.		21,444.00	5,731.50	26.7%	2,615.00	12.2%	4,991.75	23.3%	2,576.25	12%
Division 26	Electrical / Low Voltage	Collins Electric Co., Inc.	Chapman Construction Group, Inc.	-	-	0.0%	-	0.0%	-	0.0%	-	0%
Division 26	Electrical / Low Voltage	Collins Electric Co., Inc.	Seaport Energy Co., Inc.	-	-	0.0%	-	0.0%	-	0.0%	-	0%
Division 26	Electrical / Low Voltage	Collins Electric Co., Inc.	KB-Mac, Inc.	-	-	0.0%	-	0.0%	-	0.0%	-	0%
Division 26	Electrical / Low Voltage			21,444.00	5,731.50	26.7%	2,615.00	12.2%	4,991.75	23.3%	2,576.25	12%
Division 31	Earthwork	Northern Construction Service, LLC		675.50	-	0.0%	-	0.0%	263.00	38.9%	3.50	1%
Division 31	Earthwork	Northern Construction Service, LLC	Northern General Contractors, Inc.	46,189.50	10,193.50	22.1%	8,692.00	18.8%	3,716.50	8.0%	3,008.00	7%
Division 31	Earthwork	Northern Construction Service, LLC	Northern Land Clearance LLC	332.50	-	0.0%	-	0.0%	-	0.0%	-	0%
Division 03	Concrete cutting	Northern Construction Service, LLC	Ace Concrete Cutting, LLC	4.00	-	0.0%	-	0.0%	-	0.0%	-	0%
Division 31	Erosion and sediment control	Northern Construction Service, LLC	CSL, Inc.	376.00	-	0.0%	108.00	28.7%	-	0.0%	-	0%
Division 01	Fence and gates	Northern Construction Service, LLC	Guardrail Solutions LLC	938.00	-	0.0%	332.50	35.4%	-	0.0%	47.50	5%
Division 31	Earthwork	Northern Construction Service, LLC	Keller North America	4,239.00	704.50	16.6%	179.00	4.2%	-	0.0%	281.00	7%
Division 32	Asphalt Paving	Northern Construction Service, LLC	Don Martin Corporation	95.00	-	0.0%	38.00	40.0%	-	0.0%	19.00	20%
Division 32	Asphalt Paving	Northern Construction Service, LLC	Palmer Paving Corporation	-	-	0.0%	-	0.0%	-	0.0%	-	0%
Division 31	Geothermal	Northern Construction Service, LLC	Skillsings & Sons, Inc.	2,206.25	-	0.0%	416.25	18.9%	-	0.0%	344.00	16%
Division 31	Geothermal	Northern Construction Service, LLC / Skillsings & Sons, Inc.	Ground Source Drilling LLC	136.00	-	0.0%	-	0.0%	-	0.0%	-	0%
Division 31	Geothermal	Northern Construction Service, LLC / Skillsings & Sons, Inc.	Wragg Well Company LLC	319.00	-	0.0%	-	0.0%	-	0.0%	-	0%
Division 31	Earthwork			55,510.75	10,898.00	19.6%	9,765.75	17.6%	3,979.50	7.2%	3,703.00	7%
Division 32	Landscaping	Brightview Landscape		586.78	-	0.0%	-	0.0%	147.88	25.2%	-	0%
Division 32	Landscaping	Brightview Landscape	Front Line, Inc.	-	-	0.0%	-	0.0%	-	0.0%	-	0%
Division 32	Landscaping			586.78	0.00	0.0%	0.00	0.0%	147.88	25.2%	0.00	0%
Division 41	Cranes	Marr Crane & Rigging		2,732.00	-	0.0%	1,035.00	37.9%	2,090.50	76.5%	-	0%
				312,912.59	61,907.00	19.8%	74,908.28	23.9%	32,216.63	10.3%	27,307.25	8.7%



Apprentice Workforce Participation as of 3/30/2025

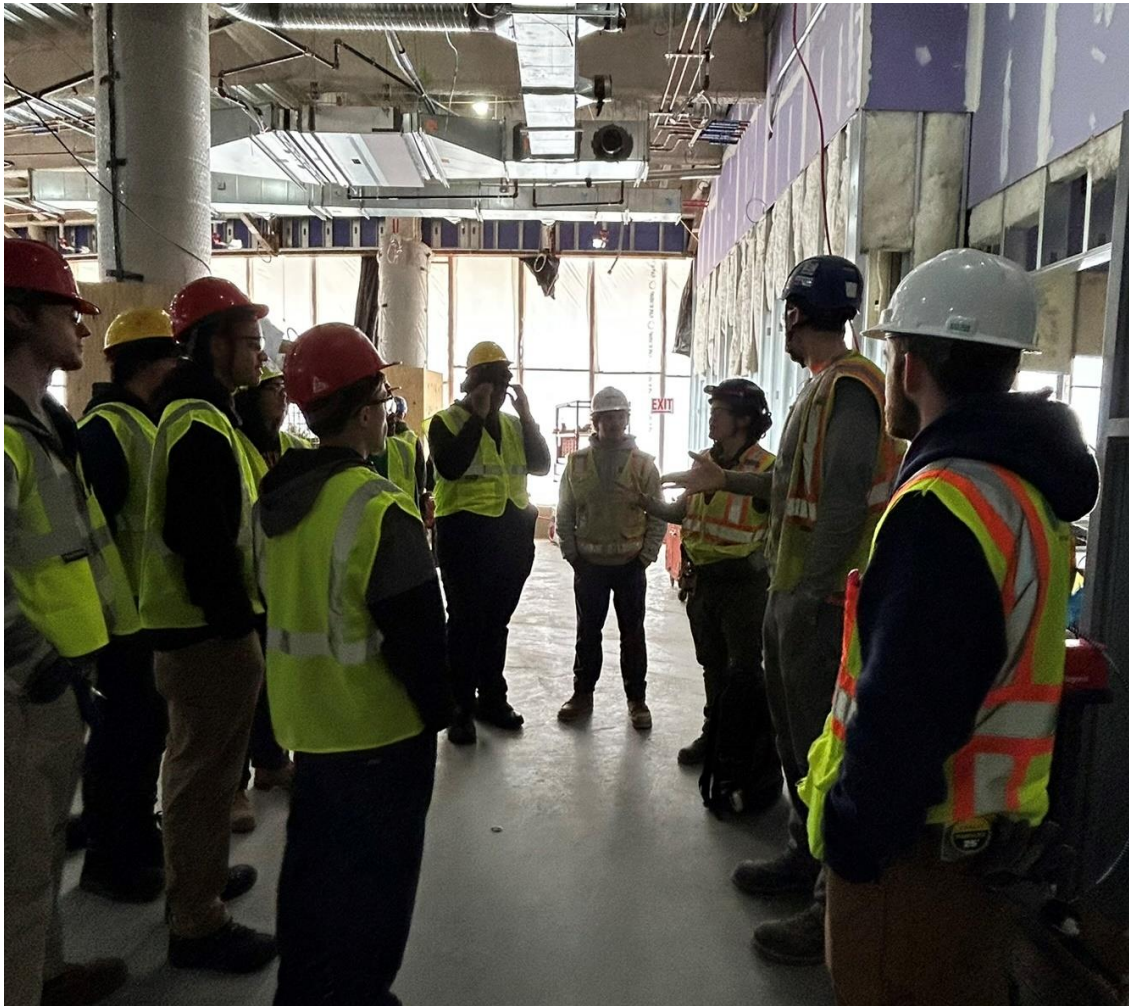
Tier 1 Contractor															
Tier 2 Contractor	Apprentice 20% Goal			Minority			Women			Veteran			Minority & Women		
	Hours	Count	%	Hours	Count	%	Hours	Count	%	Hours	Count	%	Hours	Count	%
Arden Engineering Constructors, LLC	5,736.00	13	22.4%	369.5	4	6.4%	841.00	2	14.7%	0.00	0	0.0%	0.00	0	0.0%
413 Plumbing & Heating Inc.	431.00	3	36.3%	0	0	0.0%	-	0	0.0%	0.00	0	0.0%	0.00	0	0.0%
B-G Mechanical Contractors, Inc.	303.00	1	30.0%	0.2	0	0.0%	-	0	0.0%	0.00	0	0.0%	0.00	0	0.0%
BrandSafway Services LLC, Inc.	2,336.50	3	22.3%	1338.5	2	57.3%	821.00	1	35.1%	0.00	0	0.0%	821.00	1	35.1%
Capasso Enterprises Inc.	350.50	2	10.0%	140.5	1	40.1%	-	0	0.0%	0.00	0	0.0%	0.00	0	0.0%
Chandler Architectural Products, Inc.	1,210.00	6	16.1%	246	1	20.3%	315.00	3	26.0%	612.50	1	50.6%	246.00	1	20.3%
Charles Services & Equipment	3,057.00	4	29.8%	2321	3	75.9%	1,310.00	2	42.9%	0.00	0	0.0%	1,310.00	2	42.9%
Collins Electric Co., Inc.	5,731.50	19	26.7%	982	5	17.1%	3,360.75	4	58.6%	341.00	2	5.9%	0.00	0	0.0%
Edward F. Corcoran Plumbing & Heating	48.00	1	32.0%	0.2	0	0.0%	-	0	0.0%	0.00	0	0.0%	0.00	0	0.0%
H Carr & Sons, Inc	89.00	2	3.1%	0	0	0.0%	-	0	0.0%	0.00	0	0.0%	0.00	0	0.0%
Triple J Drywall and Carpentry, Inc.	510.00	1	77.3%	0	0	0.0%	-	0	0.0%	0.00	0	0.0%	0.00	0	0.0%
Harry Grodsky & Co., Inc.	3,887.50	5	23.0%	1424.5	1	36.6%	909.50	1	23.4%	0.00	0	0.0%	0.00	0	0.0%
LK Sheetmetal	4,057.00	7	34.4%	1457	2	35.9%	1,304.00	2	32.1%	0.00	0	0.0%	0.00	0	0.0%
William Roberts Electric Co., Inc	427.00	2	29.9%	394	1	92.3%	-	0	0.0%	0.00	0	0.0%	0.00	0	0.0%
Les Constructions Beauce-Atlas, Inc.															
Prime Steel Erecting, Inc.	10,590.50	16	21.3%	2299.5	6	21.7%	1,239.50	3	11.7%	1,154.00	2	10.9%	277.50	1	2.6%
Composite Company, Inc.	136.00	1	13.3%	0	0	0.0%	-	0	0.0%	136.00	1	100.0%	0.00	0	0.0%
Morrow Equipment Company, LLC	1,143.00	2	26.6%	0	0	0.0%	1,112.00	1	97.3%	0.00	0	0.0%	0.00	0	0.0%
Manafort-Precision, LLC	4,508.50	8	13.5%	2265	3	50.2%	2,340.00	4	51.9%	78.00	1	1.7%	1,702.00	1	37.8%
Regis Steel Corporation	1,509.00	6	17.1%	631	2	41.8%	584.00	2	38.7%	436.00	1	28.9%	431.00	1	28.6%
Moran Sheet Metal, Inc.	7.00	1	54.0%	0.2	0	0.0%	-	0	0.0%	0.00	0	0.0%	0.00	0	0.0%
Northern General Contractors, Inc.	10,193.50	12	22.1%	7345.5	7	72.1%	2,870.00	3	28.2%	0.00	0	0.0%	1,315.00	1	12.9%
Keller North America	704.50	2	17.0%	0	0	0.0%	-	0	0.0%	0.00	0	0.0%	0.00	0	0.0%
Power Line Contractors, Inc.	10.00	1	1.0%	0.2	0	0.0%	-	0	0.0%	0.00	0	0.0%	0.00	0	0.0%
Professional Drywall Construction, Inc.	4,598.00	10	20.6%	1655	4	36.0%	1,357.00	2	29.5%	0.00	0	0.0%	264.00	1	5.7%
Adams & Ruxton Construction Company	303.00	3	23.9%	135	1	44.6%	135.00	1	44.6%	0.00	0	0.0%	135.00	1	44.6%
Titan Roofing, Inc.	30.00	1	47.6%	30	1	100.0%	-	0	0.0%	0.00	0	0.0%	0.00	0	0.0%
Total for Project (Chiller & Main):	61,907.00	132	19.8%	23,034	44	37.2%	18,498.75	31	29.9%	2,757.50	8	4.5%	6,501.50	10	10.5%



March 20 – Career Exploration - New North Citizens Council YouthBuild



March 27 – Career Exploration – Putnam Tech 12th Grade Electrical



April 9 – East River School: Career Exploration Fair (K-12)



Brandie Benoit
(Sheetmetal Worker)

Courtney Murphy
Apprentice (Plumber/Gasfitter)



**SKILLED
TRADES
CAREER** 9TH - 12TH GRADE STUDENTS

EXPLORATION DAY

WEDNESDAY
APRIL 9 | 2025
9:00AM - 1:00PM

BASKETBALL HALL OF FAME
100 HALL OF FAME AVE.
SPRINGFIELD, MA

SIGNED PERMISSION SLIP REQUIRED TO ATTEND

FOR FULL LIST OF PARTICIPATING SCHOOLS VISIT: rivereaststc.org/wtrades



Outreach Events – Upcoming

Monthly: 8:00 A.M. – 9:00 A.M.
Have questions about Certification?
Stop by and ask us.

4/16 [Certification's April Zoom Meeting](#)

5/21 [Certification's April Zoom Meeting](#)



MASSACHUSETTS
MINORITY
CONTRACTORS
ASSOCIATION

MMCA

**YOU'RE
INVITED**

*General
Membership
Meeting*

24 APR 2025 | WORC2
2511 Washington St,
Roxbury | **5:30 PM**

AGENDA:

**CONTRACTOR OPEN DISCUSSION
UPCOMING & CURRENT CONTRACTING OPPORTUNITIES
D7 CANDIDATE MEET-UP**

VISIT US AT WWW.MASSMCA.ORG

**MMCA - MAKING A MARK AND
LEAVING A FOOTPRINT FOR NEXT
GENERATION OF CONTRACTORS**

FOR MORE INFORMATION, PLEASE CONTACT
MAX CHARLES, 617.590.1739



COMMODORE | WALSH
HOLYOKE JOINT VENTURE

MA Construction Opportunities Event

Join us to learn about upcoming opportunities for subcontractors, vendors, and suppliers to participate in construction projects on publicly owned buildings.

June 12, 2025, 1:00-2:30 P.M.

Published on 4/6/2025

<https://www.eventbrite.com/e/1143295279959?aff=oddtcreator>

October 8, 2025, 10:00-11:30 A.M.

Published on 6/8/2025

<https://www.eventbrite.com/e/1143296333109?aff=oddtcreator>



COMMODORE | WALSH
HOLYOKE JOINT VENTURE

Questions

