



# Holyoke Veterans' Home Access, Inclusion & Diversity Committee

## Project Update

July 2025



DIVISION OF  
CAPITAL ASSET  
MANAGEMENT &  
MAINTENANCE

# Agenda

---

## Project Updates

- Project/Schedule Update
- Work in Progress
- Project MBE/WBE Participation Plan
- Project VBE Participation Plan
- Business Participation Payment Report
- Workforce Hours Report
- Ongoing Outreach
- Questions



# Phase 1 Milestone Schedule

---

Scope	Planned
Temp Weather Tight (Level 2-5)	2/21/2025
Temp Weather Tight (Level 2 & Above)	6/24/2025
Permanent Power Available	7/16/2025
Building Weather Tight	3/20/2026
MDFs and IDF's Turned over to Owner – group 1	1/8/2026
Owner's Network Availability	5/13/2026
Complete Fire Alarm Testing	6/30/2026
Start FF&E	9/25/2026
Certificate of Occupancy	9/3/2026
Phase 1 Substantial Completion	9/11/2026



# Work in Progress – Overall Site



**COMMODORE | WALSH**  
HOLYOKE JOINT VENTURE

# Work in Progress – Geofield work resumed

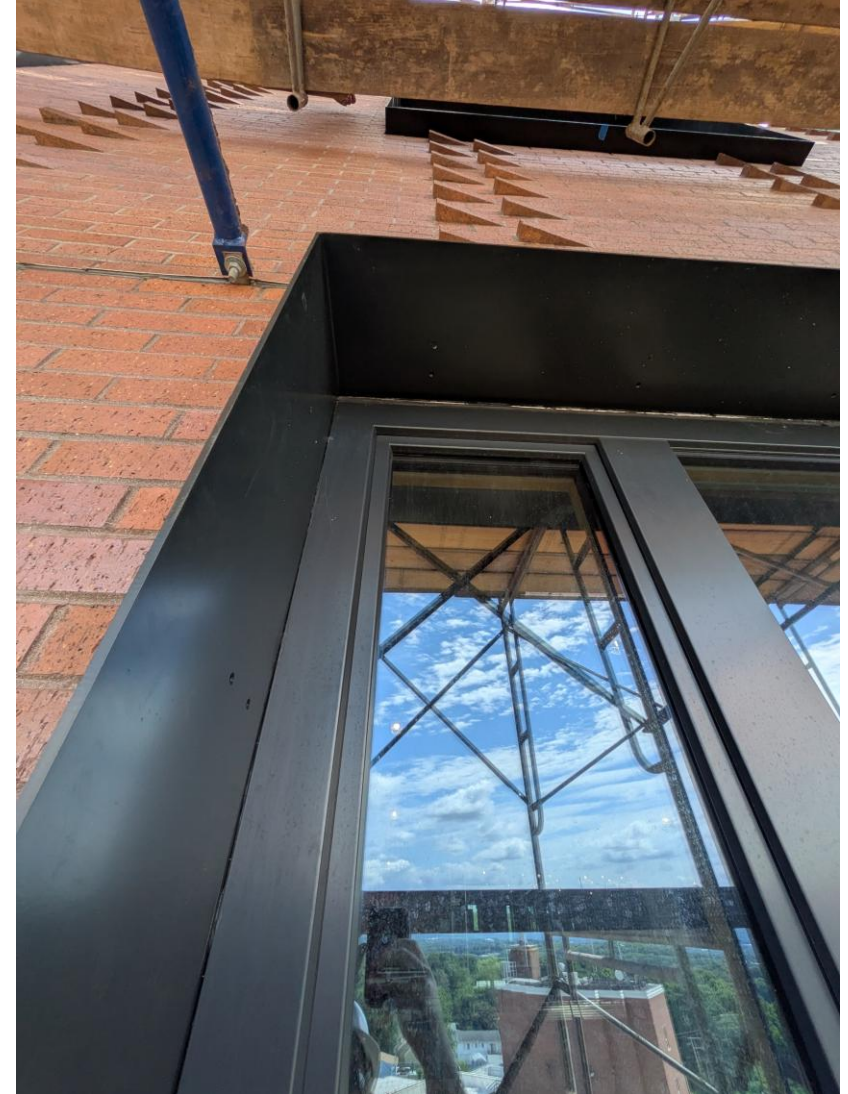


**COMMODORE | WALSH**  
HOLYOKE JOINT VENTURE

# Work in Progress – Roofing and metal panel installation ongoing



# Work in Progress – Masonry installation continues including shrouds installation



**COMMODORE | WALSH**  
HOLYOKE JOINT VENTURE

# Work in Progress – Drywall installation at lower levels ongoing



# Work in Progress – Elevators installation



**COMMODORE | WALSH**  
HOLYOKE JOINT VENTURE

# Project MBE/WBE Participation Plan

**Total GMP**  
**\$401,558,505**

**Contract Goals**  
MBE \$18,873,250  
WBE \$30,920,005

**Current Awards**  
MBE \$17,965,691  
WBE \$33,754,195

**MBE**  
**4.7%**

**WBE**  
**7.7%**

**MBE**  
**4.5%**

**WBE**  
**8.4%**



**Total GMP**  
**\$401,558,505**

**Contract Goals**  
VBE    \$12,046,755


**VBE**  
**3.0%**

**Current Awards**  
VBE    \$15,197,900

**VBE**  
**3.8%**

# MBE Participation – Paid through DCMS May Audit 2025

Bid Package Description	Prime / Filed Sub		Current Subcontract Value	MBE Paid to Date	Percent to Full Subcontract	Percent to Goal
Prime Contracts						
Demolition & Abatement - Dorm & Chiller	American Environmental, Inc.		\$ 610,776.00	\$ 601,298.20	98.4%	0.1%
Demolition & Abatement - Main	Not yet identified		\$ -	\$ -	0.0%	0.0%
Roofing and Flashing	Titan Roofing, Inc.		\$ 3,383,129.00	\$ 268,707.50	7.9%	0.1%
Tier Packages (Trade-Description)	Tier Subcontractor					
Concrete Prime - Tier 2 Installation of Reinforcing	Regis Steel Corp		\$ 1,215,000.00	\$ 889,586.35	73.2%	0.2%
Structural Steel - Tier 3 Welding	Trident Production Welding		\$ 850,000.00	\$ 814,570.51	95.8%	0.2%
Fireproofing Prime - Tier 2 Labor for Carpentry Fireproofing Support	Triple J Drywall & Carpentry, Inc.		\$ 90,000.00	\$ 90,000.00	100.0%	0.0%
Drywall Prime - Tier 2 Furnishing Labor For Taping/Carpentry Support	Scorpions Contracting, Inc.		\$ 23,650.00		0.0%	0.0%
Drywall Prime - Tier 2 Furnishing Labor For Taping	American Finish Systems, Inc.		\$ 1,480,000.00	\$ -	0.0%	0.0%
Acoustical Tile Prime - Tier 2 Furnishing Labor For Carpentry Support	Triple J Drywall & Carpentry, Inc.		\$ 72,000.00	\$ -	0.0%	0.0%
Food Service Equipment Prime - Tier 2 Sheetmetal installation	Titan Roofing, Inc.		\$ 100,000.00	\$ 15,902.78	15.9%	0.0%
Plumbing Prime - Tier 2 Furnish & Installation of Plumbing Insulation	Kim Industries, Inc.		\$ 1,116,000.00	\$ 31,207.50	2.8%	0.0%
HVAC Prime - Tier 2 Material and Field Labor	Kim Industries, Inc.		\$ 3,975,000.00	\$ 147,963.45	3.7%	0.0%
Electrical Prime - Tier 2 Furnish & Install Systems	KB-Mac, Inc.		\$ 3,032,664.00	\$ 2,178,750.00	71.8%	0.5%
Earthwork Prime - Tier 2 Trucking of Materials To & From the Site	C&C Contractors, LLC		\$ 1,162,000.00	\$ 868,163.75	74.7%	0.2%
Earthwork Prime - Tier 2 Installation of Reinforcing	Regis Steel Corp		\$ 100,000.00	\$ 46,511.15	46.5%	0.0%
Earthwork Prime - Tier 2 Furnish & Install Asphalt Paving	Don Martin Corp		\$ 300,000.00	\$ 369,437.57	123.1%	0.1%
Material Only (Prime Trade-Description)	Material Supplier	Current Subcontract Value	15% of Subcontract dollar value for credit			
Ceramic Tile Prime - Tier 2 Furnishing Materials	ST Materials & Equipment, LLC	\$ 150,000.00	\$ 22,500.00	\$ -	0.0%	0.0%
Plumbing Prime - Tier 2 Furnish Only Plumbing Materials	JHP Industrial Supply Company, Inc.	\$ 986,483.00	\$ 147,972.45	\$ 64,496.85	43.6%	0.0%
HVAC Prime -Tier 2 Furnish Only HVAC Materials	Carl-Louis & Co., Inc.	\$ 900,000.00	\$ 135,000.00	\$ 59,855.64	44.3%	0.0%
Electrical Prime - Tier 2 Furnish Low Voltage Materials	Certified Connections, Inc.	\$ 1,000,000.00	\$ 150,000.00	\$ 24,251.06	16.2%	0.0%
					Percent to Full Subcontract	Percent to Projected Goal
			\$ 17,965,691.45	\$ 6,470,702.31	36.0%	1.6%
					Projected GOAL	4.5%

Diversity Office

COMMODORE | WALSH



# WBE Participation – Paid through DCMS May Audit 2025

Bid Package Description	Prime / Filed Sub		Current Subcontract Value	WBE Paid to Date	Percent to Full Subcontract	Percent to Goal
<b>Prime Contracts</b>						
Final Cleaning	Front Line, Inc.		\$ 701,550.00	\$ -	0.0%	0.0%
Doors, Frames, and Hardware	Thompson Company, Inc.		\$ 5,631,924.00	\$ 391,854.82	7.0%	0.1%
Carpet	Ayotte & King for Tile, Inc.		\$ 103,478.00	\$ 55,801.10	53.9%	0.0%
Window Treatments	Contexture		\$ 2,470,093.00	\$ 805,312.48	32.6%	0.2%
Resilient Flooring	Ayotte & King for Tile, Inc.		\$ 3,575,000.00	\$ 41,572.00	1.2%	0.0%
<b>Tier Packages (Trade-Description)</b>						
<b>Tier Subcontractor</b>						
Concrete Prime - Tier 2 Furnishing Reinforcing	Rebars & Mesh, Inc.		\$ 1,400,000.00	\$ 1,249,686.50	89.3%	0.3%
Steel Prime - Tier 3 Install Shear Connectors	Composite Co., Inc.		\$ 187,610.00	\$ 162,992.60	86.9%	0.0%
Millwork Prime - Tier 2 Installation of Millwork	J. Thibert Architectural Woodwork Installation		\$ 1,924,092.00	\$ -	0.0%	0.0%
Millwork Prime - Tier 2 Labor for loading of materials and clean up	Front Line, Inc.		\$ 937,500.00	\$ -	0.0%	0.0%
Drywall Prime - Tier 2 Labor For Carpentry Support	Adams and Ruxton Construction Company		\$ 725,000.00	\$ 74,007.56	10.2%	0.0%
Drywall Prime - Tier 2 Labor For Carpentry Support	Advanced Scaffold Services of N.E. LLC		\$ 39,250.00	\$ 16,074.00	41.0%	0.0%
Plumbing Prime - Tier 2 Furnish & Installation of Plumbing Materials	413 Plumbing & Heating, Inc.		\$ 1,620,000.00	\$ 502,851.41	31.0%	0.1%
HVAC Prime - Tier 2 Furnish & Installation of Sheetmetal Ductwork	L.K. Sheet Metal, Inc.		\$ 5,500,000.00	\$ 2,142,851.77	39.0%	0.5%
Electrical Prime - Tier 2 Furnish & Install Site Lighting	Chapman Construction Group, Inc.		\$ 1,308,394.00	\$ -	0.0%	0.0%
Electrical Prime - Tier 2 Material and Install Gear and Lighting Package	Seaport Energy Co., Inc.		\$ 2,811,675.00	\$ 2,597,527.34	92.4%	0.6%
Earthwork Prime - Tier 2 Furnishing & Installing/ReloTemporary Site Fence	Guardrail Solutions, LLC		\$ 494,875.00	\$ 290,615.92	58.7%	0.1%
Earthwork Prime - Tier 2 Silt Fence, jute mesh & temp seeding	CSL, Inc.		\$ 142,038.00	\$ 128,664.20	90.6%	0.0%
Landscaping Prime - Tier 2 Labor and site clean up	Front Line, Inc.		\$ 900,000.00	\$ -	0.0%	0.0%
<b>Material Only (Prime Trade-Description)</b>						
<b>Material Supplier</b>		<b>Contract Value</b>	<b>15% of Subcontract dollar value for credit</b>			
Masonry Prime - Tier 2 Furnish only masonry materials	Architectural Products, Inc.	\$ 195,607.00	\$ 29,341.05	\$ 12,676.03	43.2%	0.0%
Masonry Prime - Tier 2 Furnish only masonry materials	Della Supply, LLC	\$ 815,000.00	\$ 122,250.00	\$ 48,047.68	39.3%	0.0%
Steel Prime - Tier 3 Furnish only of Safety Screening System	Essential Perimeter	\$ 1,972,250.00	\$ 295,837.50	\$ 310,576.65	105.0%	0.1%
Curtain Wall, Windows & Panels Prime -Tier 2 Furnish Louvers & Vents	Architectural Products, Inc.	\$ 3,907,941.00	\$ 586,191.15	\$ 552,014.91	94.2%	0.1%
Painting Prime -Tier 2 Furnish Only Painting Supplies	Heritage Construction & Supply	\$ 156,059.00	\$ 23,408.85	\$ -	0.0%	0.0%
HVAC Prime - Tier 2 Furnish Only Controls Material	Northeast Controls Panel Fabrication, Inc.	\$ 600,000.00	\$ 90,000.00	\$ 25,500.00	28.3%	0.0%
					<b>Percent to Full Subcontract</b>	<b>Percent to Projected Goal</b>
			\$ 32,045,460.55	\$ 9,884,274.44	30.8%	2.5%
					<b>Projected GOAL</b>	<b>8.0%</b>



**COMMODORE | WALSH**  
HOLYOKE JOINT VENTURE

# VBE Participation – Paid through DCMS May Audit 2025

Bid Package Description	Prime / Filed Sub	Current Subcontract Value	VBE Paid toDate	Percent to Full Subcontract	Percent to Goal
Management	Commodore Builders	\$ 12,000,000.00	\$ 6,095,826.51	50.8%	1.5%
Prime - Waterproofing and Dampproofing	Superior Caulking & Waterproofing Co., Inc.	\$ 3,188,000.00	\$ 1,073,975.00	33.7%	0.3%
				Percent to Full Subcontract	Percent to Projected Goal
		\$ 15,188,000.00	\$ 7,169,801.51	47.2%	1.8%
				Projected GOAL	3.8%



# Workforce Participation - \*Percentages as of 07-06-2025

Goal	All Workers	Minority 15.3%	Women 6.9%	Veterans 7%
Reported Hours	403,367.34	105,272.03	40,947.88	37,638.25
% percent	N/A	26.1%	10.2%	9.1%

Goal	Apprentice 20%	**Minority, Women, Veteran Apprentices 40% of Apprentice Hours
Reported Hours	82,283.75	53,101.00
% percent	20.4%	More than 40%

Goal – 40% of Apprentice Hours	Minority Apprentices	**Women Apprentices	Veteran Apprentices	Minority & Women Apprentices
Reported Hours	33,338.00	24,271.00	3,945.00	8,453.50
% percent	40.5%	29.5%	4.8%	10.3%

\*\* Includes women who are also part of a minority group.  
 \* Percentages are based on hours reported in DCMS LCPtracker



**COMMODORE | WALSH**  
 HOLYOKE JOINT VENTURE

# Workforce Participation as of 07/06/2025 (1 of 3)

						Apprentice Goal 20%	Minority Goal 15.3%	Women Goal 6.9%	Veteran Goal 7%			
Division	Description	Tier 1 Contractor	Tier 2 or 3 Contractor	Total Hours	Hours	%	Hours	%	Hours	%	Hours	%
Division 01	Scaffolding	BrandSafway Services LLC, Inc.		14,639.50	3,694.50	25.2%	7,106.50	48.5%	1,364.00	9.3%	402.50	2.7%
Division 01 & 06	Progress Cleaning/Rough Carp.	Charles Services & Equipment		15,414.50	4,514.00	29.3%	7,394.00	48.0%	2,318.00	15.0%	2,844.50	18.5%
Division 03	Cast-In-Place Concrete	Manafort-Precision, LLC		33,812.00	4,508.50	13.3%	6,723.50	19.9%	2,340.00	6.9%	3,442.50	10.2%
Division 03	Concrete Reinforcing	Manafort-Precision, LLC	Regis Steel Corporation	8,769.00	1,467.00	16.7%	1,734.00	19.8%	1,792.00	20.4%	1,699.00	19.4%
Division 03	Cast-In-Place Concrete	Manafort-Precision + Tiers Aggregate		42,581.00	5,975.50	14.0%	8,457.50	19.9%	4,132.00	9.7%	5,141.50	12.1%
Division 04	Masonry	Capasso Enterprises Inc.		9,629.50	832.50	8.6%	3,734.00	38.8%	-	0.0%	681.50	7.1%
Division 05	Structural Steel	Les Constructions Beauce Atlas, Inc.	McGregor Industries Inc	1,176.00	-	0.0%	328.00	27.9%	328.00	27.9%	-	0.0%
Division 05	Structural Steel	Les Constructions Beauce Atlas, Inc.	Prime Steel Erecting, Inc.	50,974.00	10,849.50	21.3%	10,603.00	20.8%	2,782.50	5.5%	6,355.00	12.5%
Division 41	Cranes	Les Constructions Beauce Atlas, Inc. / Prime Steel Erecting, Inc.	Morrow Equipment Company, LLC	4,302.50	1,143.00	26.6%	-	0.0%	2,021.50	47.0%	-	0.0%
Division 05	Structural Steel	Les Constructions Beauce Atlas, Inc. / Prime Steel Erecting, Inc.	Composite Company, Inc.	1,021.00	136.00	13.3%	-	0.0%	-	0.0%	136.00	13.3%
Division 05	Structural Steel	Les Constructions Beauce Atlas, Inc. / Prime Steel Erecting, Inc.	Trident Production Welding, Inc.	6,111.00	-	0.0%	5,580.00	91.3%	-	0.0%	-	0.0%
Division 05	Structural Steel	Les Constructions Beauce Atlas + Tiers Aggregate		63,584.50	12,128.50	19.1%	16,511.00	26.0%	5,132.00	8.1%	6,491.00	10.2%
Division 05	Misc. Metals	Quinn Brothers of Essex + Tiers Aggregate		273.00	0.00	0.0%	83.00	30.4%	55.00	20.1%	55.00	20.1%
Division 07	Fireproofing	H Carr & Sons, Inc		-	-	0.0%	-	-	-	-	-	0.0%
Division 07	Fireproofing	H Carr & Sons, Inc	Triple J Drywall and Carpentry, Inc.	659.50	510.00	77.3%	-	0.0%	40.00	6.1%	-	0.0%
Division 09	Acoustical Tile Ceilings	H Carr & Sons, Inc		4,855.00	89.00	1.8%	2,949.50	60.8%	104.00	2.1%	136.00	2.8%
Division 09	Acoustical Tile Ceilings	H Carr & Sons, Inc	Triple J Drywall and Carpentry, Inc.	-	-	0.0%	-	0.0%	-	0.0%	-	0.0%
Division 07/09	Fireproofing + ACT	H. Carr & Sons, Inc. + Tiers Aggregate		5,514.50	599.00	10.9%	2,949.50	53.5%	144.00	2.6%	136.00	2.5%
Division 07	Waterproofing and Dampproofing	Superior Caulking & Waterproofing Co., Inc.		5,088.50	-	0.0%	1,353.50	26.6%	-	0.0%	-	0.0%
Division 07	Roofing and Flashing	Titan Roofing, Inc.		3,599.25	1,122.50	31.2%	3,264.25	90.7%	16.50	0.5%	-	0.0%
Division 08	Curtain Wall + Glass & Glazing	Chandler Architectural Products, Inc.		12,758.00	2,063.50	16.2%	3,397.00	26.6%	1,381.50	10.8%	3,944.50	30.9%
Division 08	Doors, Frames, and Hardware	Thompson Co., Inc. + Tiers Aggregate		16.00	-	0.0%	-	0.0%	-	0.0%	-	0.0%
Division 09	Resinous Flooring	Allegheny Contract Flooring, Inc.		88.00	-	0.0%	32.00	36.4%	-	0.0%	-	0.0%
Division 09	Painting	John W. Egan Company Inc.		198.00	70.00	35.4%	-	0.0%	-	0.0%	-	0.0%



# Workforce Participation as of 07/06/2025 (2 of 3)

				Apprentice Goal 20%			Minority Goal 15.3%		Women Goal 6.9%		Veteran Goal 7%	
Division	Description	Tier 1 Contractor	Tier 2 or 3 Contractor	Total Hours	Hours	%	Hours	%	Hours	%	Hours	%
Division 09	Drywall	Professional Drywall Construction, Inc.		31,713.00	6,632.00	20.9%	12,303.00	38.8%	3,883.50	12.2%	3,091.00	9.7%
Division 09	Window Blocking/Clean Up	Professional Drywall Construction, Inc.	Adams & Ruxton Construction Co.	4,110.00	1,037.00	25.2%	1,776.50	43.2%	607.00	14.8%	781.50	19.0%
Division 09	Taping	Professional Drywall Construction, Inc.	Scorpions Contracting, Inc.	268.00	-	0.0%	224.00	83.6%	-	0.0%	-	0.0%
Division 09	Taping	Professional Drywall Construction, Inc.	American Finish Systems	689.00	-	0.0%	689.00	100.0%	-	0.0%	-	0.0%
Division 09	Taping	Professional Drywall Construction, Inc.	Connecticut Drywal Finishing	24.00	-	0.0%	-	0.0%	-	0.0%	-	0.0%
Division 09	Drywall/Insulation	Professional Drywall Construction, Inc.	Acoustical Thermal Insulators, Inc.	-	-	0.0%	-	0.0%	-	0.0%	-	0.0%
Division 01	Scaffolding	Professional Drywall Construction, Inc.	Advanced Scaffold Services of NE	82.00	-	0.0%	41.00	50.0%	-	0.0%	-	0.0%
<b>Division 09</b>	<b>Drywall</b>	<b>Professional Drywall Construction, Inc. + Tiers Aggregate</b>		<b>36,886.00</b>	<b>7,669.00</b>	<b>20.8%</b>	<b>15,033.50</b>	<b>40.8%</b>	<b>4,490.50</b>	<b>12.2%</b>	<b>3,872.50</b>	<b>10.5%</b>
<b>Division 11</b>	<b>Appliances/Food Service</b>	<b>Singer + Tiers Aggregate</b>		<b>2.00</b>	<b>0.00</b>	<b>0.0%</b>	<b>0.00</b>	<b>0.0%</b>	<b>0.00</b>	<b>0.0%</b>	<b>0.00</b>	<b>0.0%</b>
<b>Division 14</b>	<b>Elevator</b>	<b>KONE</b>		<b>-</b>	<b>-</b>	<b>0.0%</b>	<b>-</b>	<b>0.0%</b>	<b>-</b>	<b>0.0%</b>	<b>-</b>	<b>0.0%</b>
Division 21	Fire Protection	Arden Engineering Constructors, LLC		-	-	0.0%	-	-	-	-	-	0.0%
Division 22	Plumbing	Arden Engineering Constructors, LLC		38,337.00	8,324.50	21.7%	3,910.00	10.20%	1,880.00	4.90%	3,211.00	8.4%
Division 22	Plumbing	Arden Engineering Constructors, LLC	413 Plumbing & Heating Inc.	1,187.50	431.00	36.3%	114.00	9.6%	-	0.0%	32.00	2.7%
Division 22	Plumbing	Arden Engineering Constructors, LLC	M.J.Daly LLC	1,922.50	-	0.0%	1,914.50	99.6%	-	0.0%	-	0.0%
Division 22	Plumbing Insulation	Arden Engineering Constructors, LLC	Kim Industries Inc	1,459.50	-	0.0%	415.00	28.4%	-	0.0%	-	0.0%
<b>Division 21/22</b>	<b>Fire Protection + Plumbing</b>	<b>Arden Engineering Constructors, LLC + Tiers Aggregate</b>		<b>42,906.50</b>	<b>8,755.50</b>	<b>20.4%</b>	<b>6,353.50</b>	<b>14.8%</b>	<b>1,880.00</b>	<b>4.4%</b>	<b>3,243.00</b>	<b>7.6%</b>
Division 23	HVAC	Harry Grodsky & Co., Inc.		23,613.50	5,493.50	23.3%	3,858.00	16.3%	1,449.00	6.1%	1,623.00	6.9%
Division 23	HVAC Sheetmetal Work	Harry Grodsky & Co., Inc.	LK Sheetmetal	18,658.50	6,248.00	33.5%	6,299.00	33.8%	3,573.50	19.2%	831.00	4.5%
Division 23	HVAC Insulation	Harry Grodsky & Co., Inc.	Kim Industries Inc	2,250.00	600.00	26.7%	480.00	21.3%	-	0.0%	-	0.0%
Division 07	Firestopping	Harry Grodsky & Co., Inc.	Barber Firestop Systems LLC	104.00	8.00	7.7%	-	0.0%	-	0.0%	-	0.0%
Division 41	Cranes	Harry Grodsky & Co., Inc.	Central Mass Crane Service Inc.	24.00	-	0.0%	-	0.0%	-	0.0%	-	0.0%
Division 23	HVAC	Harry Grodsky & Co., Inc.	Automated Logic Contracting Services	110.00	-	0.0%	-	0.0%	-	0.0%	-	0.0%
Division 23	HVAC	Harry Grodsky & Co., Inc. / Automated Logic Contracting Services	William Roberts Electric Co., Inc	3,133.75	1,050.25	33.5%	858.00	27.4%	159.25	5.1%	-	0.0%
<b>Division 23</b>	<b>HVAC</b>	<b>Harry Grodsky &amp; Co., Inc. + Tiers Aggregate</b>		<b>47,893.75</b>	<b>13,399.75</b>	<b>28.0%</b>	<b>11,495.00</b>	<b>24.0%</b>	<b>5,181.75</b>	<b>10.8%</b>	<b>2,454.00</b>	<b>5.1%</b>



# Workforce Participation as of 07/06/2025 (3 of 3)

Division	Description	Tier 1 Contractor	Tier 2 or 3 Contractor	Total Hours	Apprentice Goal 20%		Minority Goal 15.3%		Women Goal 6.9%		Veteran Goal 7%	
					Hours	%	Hours	%	Hours	%	Hours	%
Division 26	Electrical / Low Voltage	Collins Electric Co., Inc.		30,789.00	8,477.00	27.5%	4,867.00	15.8%	6,484.75	21.1%	3,906.25	12.7%
Division 26	Electrical / Low Voltage	Collins Electric Co., Inc.	Chapman Construction Group, Inc.	8.00	-	0.0%	-	0.0%	-	0.0%	-	0.0%
Division 26	Electrical / Low Voltage	Collins Electric Co., Inc.	Seaport Energy Co., Inc.	48.00	-	0.0%	-	0.0%	-	0.0%	-	0.0%
Division 26	Electrical / Low Voltage	Collins Electric Co., Inc.	KB-Mac, Inc.	-	-	0.0%	-	0.0%	-	0.0%	-	0.0%
<b>Division 26</b>	<b>Electrical / Low Voltage</b>	<b>Collins Electric Co., Inc. + Tiers Aggregate</b>		<b>34,149.50</b>	<b>9,515.00</b>	<b>27.9%</b>	<b>5,770.00</b>	<b>16.9%</b>	<b>6,990.75</b>	<b>20.5%</b>	<b>4,301.75</b>	<b>12.6%</b>
Division 31	Earthwork	Northern Construction Service, LLC		771.00	-	0.0%	-	0.0%	263.00	34.1%	3.50	0.5%
Division 31	Earthwork	Northern Construction Service, LLC	Northern General Contractors, Inc.	48,522.50	10,830.00	22.3%	8,727.00	18.0%	3,716.50	7.7%	3,119.50	6.4%
Division 31	Earthwork	Northern Construction Service, LLC	Northern Land Clearance LLC	332.50	-	0.0%	-	0.0%	-	0.0%	-	0.0%
Division 03	Concrete cutting	Northern Construction Service, LLC	Ace Concrete Cutting, LLC	4.00	-	0.0%	-	0.0%	-	0.0%	-	0.0%
Division 31	Erosion and sediment control	Northern Construction Service, LLC	CSL, Inc.	376.00	-	0.0%	108.00	28.7%	-	0.0%	-	0.0%
Division 01	Fence and gates	Northern Construction Service, LLC	Guardrail Solutions LLC	938.00	-	0.0%	332.50	35.4%	-	0.0%	47.50	5.1%
Division 31	Earthwork	Northern Construction Service, LLC	Keller North America	4,239.00	704.50	16.6%	179.00	4.2%	-	0.0%	281.00	6.6%
Division 32	Asphalt Paving	Northern Construction Service, LLC	Don Martin Corporation	95.00	-	0.0%	38.00	40.0%	-	0.0%	19.00	20.0%
Division 32	Asphalt Paving	Northern Construction Service, LLC	Palmer Paving Corporation	-	-	0.0%	-	0.0%	-	0.0%	-	0.0%
Division 03	Concrete Reinforcing	Northern Construction Service, LLC	Regis Steel Corporation	298.00	42.00	14.1%	86.00	28.9%	153.00	51.3%	36.00	12.1%
Division 31	Geothermal	Northern Construction Service, LLC	Skillings & Sons, Inc.	2,206.25	-	0.0%	416.25	18.9%	-	0.0%	344.00	15.6%
Division 31	Geothermal	Northern Construction Service, LLC / Skillings & Sons, Inc.	Ground Source Drilling LLC	136.00	-	0.0%	-	0.0%	-	0.0%	-	0.0%
Division 31	Geothermal	Northern Construction Service, LLC / Skillings & Sons, Inc.	Wragg Well Company LLC	319.00	-	0.0%	-	0.0%	-	0.0%	-	0.0%
<b>Division 31</b>	<b>Earthwork</b>	<b>Northern Construction Service, LLC + Tiers Aggregate</b>		<b>58,237.25</b>	<b>11,576.50</b>	<b>19.9%</b>	<b>9,886.75</b>	<b>17.0%</b>	<b>4,132.50</b>	<b>7.1%</b>	<b>3,850.50</b>	<b>6.6%</b>
<b>Division 32</b>	<b>Landscaping</b>	<b>Brightview + Tiers Aggregate</b>		<b>586.78</b>	<b>0.00</b>	<b>0.0%</b>	<b>0.00</b>	<b>0.0%</b>	<b>147.88</b>	<b>25.2%</b>	<b>0.00</b>	<b>0.0%</b>
<b>Division 41</b>	<b>Cranes</b>	<b>Marr Crane &amp; Rigging</b>		<b>4,359.00</b>	<b>-</b>	<b>0.0%</b>	<b>1,721.00</b>	<b>39.5%</b>	<b>2,759.50</b>	<b>63.3%</b>	<b>-</b>	<b>0.0%</b>
				<b>403,367.34</b>	<b>82,283.75</b>	<b>20.4%</b>	<b>105,272.03</b>	<b>26.1%</b>	<b>40,947.88</b>	<b>10.2%</b>	<b>37,638.25</b>	<b>9.3%</b>



# Apprentice Workforce Participation as of 07/06/2025

Tier 1 Contractor													Minority & Women		
Tier 2 Contractor	Apprentice 20% Goal			Minority			Women			Veteran					
Tier 3 Contractor	Hours	Count	%	Hours	Count	%	Hours	Count	%	Hours	Count	%	Hours	Count	%
Arden Engineering Constructors, LLC	8,324.50	16	21.7%	824.5	4	9.9%	1,140.50	2	13.7%	255.50	1	3.1%	0.00	0	0.0%
413 Plumbing & Heating Inc.	431.00	3	36.3%	0	0	0.0%	-	0	0.0%	0.00	0	0.0%	0.00	0	0.0%
B-G Mechanical Contractors, Inc.	303.00	1	30.0%	0.2	0	0.0%	-	0	0.0%	0.00	0	0.0%	0.00	0	0.0%
BrandSafway Services LLC, Inc.	3,694.50	3	25.2%	2392.5	2	64.8%	1,364.00	1	36.9%	0.00	0	0.0%	1,364.00	1	36.9%
Capasso Enterprises Inc.	832.50	2	8.6%	385	1	46.2%	-	0	0.0%	0.00	0	0.0%	0.00	0	0.0%
Chandler Architectural Products, Inc.	2,063.50	6	16.2%	434	1	21.0%	676.00	3	32.8%	1,105.00	1	53.5%	434.00	1	21.0%
Charles Services & Equipment	4,514.00	4	29.3%	4514	4	100.0%	1,750.00	2	38.8%	0.00	0	0.0%	1,750.00	2	38.8%
Collins Electric Co., Inc.	9,515.00	27	27.5%	2791	7	29.3%	4,568.25	4	48.0%	781.00	2	8.2%	0.00	0	0.0%
Edward F. Corcoran Plumbing & Heating	48.00	1	32.0%	0.2	0	0.0%	-	0	0.0%	0.00	0	0.0%	0.00	0	0.0%
H Carr & Sons, Inc	89.00	2	3.1%	0	0	0.0%	-	0	0.0%	0.00	0	0.0%	0.00	0	0.0%
Triple J Drywall and Carpentry, Inc.	510.00	1	77.3%	0	0	0.0%	-	0	0.0%	0.00	0	0.0%	0.00	0	0.0%
Harry Grodsky & Co., Inc.	5,493.50	5	23.3%	2002	1	36.4%	1,449.00	1	26.4%	0.00	0	0.0%	0.00	0	0.0%
Kim Industries Inc	600.00	3	26.7%	8	1	1.3%	-	0	0.0%	0.00	0	0.0%	0.00	0	0.0%
LK Sheetmetal	6,248.00	9	33.5%	1857	2	29.7%	2,442.00	3	39.1%	0.00	0	0.0%	0.00	0	0.0%
Todd Barber dba Barber Firestop Systems LLC	8.00	1	40.0%	0	0	0.0%	-	0	0.0%	0.00	0	0.0%	0.00	0	0.0%
William Roberts Electric Co., Inc	1,050.25	3	33.5%	858	1	81.7%	159.25	1	15.2%	0.00	0	0.0%	0.00	0	0.0%
John W. Egan Company Inc.	70.00	1	35.4%	0	0	0.0%	-	0	0.0%	0.00	0	0.0%	0.00	0	0.0%
Les Constructions Beauce-Atlas, Inc.															
Prime Steel Erecting, Inc.	10,849.50	16	21.3%	2299.5	6	21.2%	1,239.50	3	11.4%	1,154.00	2	10.6%	277.50	1	2.6%
Composite Company, Inc.	136.00	1	13.3%	0	0	0.0%	-	0	0.0%	136.00	1	100.0%	0.00	0	0.0%
Morrow Equipment Company, LLC	1,143.00	2	26.6%	0	0	0.0%	1,112.00	1	97.3%	0.00	0	0.0%	0.00	0	0.0%
Manafort-Precision, LLC	4,508.50	8	13.5%	2265	3	50.2%	2,340.00	4	51.9%	78.00	1	1.7%	1,702.00	1	37.8%
Regis Steel Corporation	1,509.00	6	17.1%	631	2	41.8%	584.00	2	38.7%	436.00	1	28.9%	431.00	1	28.6%
Moran Sheet Metal, Inc.	7.00	1	54.0%	0.2	0	0.0%	-	0	0.0%	0.00	0	0.0%	0.00	0	0.0%
Northern General Contractors, Inc.	10,830.00	12	22.3%	7371	7	68.1%	2,870.00	3	26.5%	0.00	0	0.0%	1,315.00	1	12.1%
Keller North America	704.50	2	17.0%	0	0	0.0%	-	0	0.0%	0.00	0	0.0%	0.00	0	0.0%
Power Line Contractors, Inc.	10.00	1	1.0%	0.2	0	0.0%	-	0	0.0%	0.00	0	0.0%	0.00	0	0.0%
Professional Drywall Construction, Inc.	6,632.00	10	20.9%	2993	4	45.1%	1,961.00	2	29.6%	0.00	0	0.0%	573.00	1	8.6%
Adams & Ruxton Construction Company	1,037.00	3	25.2%	607	1	58.5%	607.00	1	58.5%	0.00	0	0.0%	607.00	1	58.5%
Titan Roofing, Inc.	1,122.50	6	31.2%	1105.5	4	98.5%	8.50	1	0.8%	0.00	0	0.0%	0.00	0	0.0%
Total for Project (Chiller & Main):	82,283.75	156	20.4%	33,338	51	40.5%	24,271.00	34	29.5%	3,945.50	9	4.8%	8,453.50	10	10.3%



# MA Construction Opportunities Event

---

Join us to learn what you need to know to start bidding and working on public projects, and about upcoming opportunities for subcontractors, vendors, and suppliers to participate in construction projects on publicly owned buildings.

**October 8, 2025, 10:00-11:30 A.M.**

Published on 6/8/2025

<https://www.eventbrite.com/e/1143296333109?aff=oddtcreator>



**COMMODORE | WALSH**  
HOLYOKE JOINT VENTURE

# Questions

