



DIVISION OF
CAPITAL ASSET
MANAGEMENT &
MAINTENANCE



Holyoke Veterans' Home
Access, Inclusion & Diversity Committee
Project Update
April 21, 2023

AGENDA

Project Update

- Project Schedule Update
- Unofficial Filed Sub Bid Results
- Early Package Workforce Report
- Workforce Reporting Methods
- Ongoing Outreach
- Questions



COMMODORE | WALSH
HOLYOKE JOINT VENTURE

Project Update April 2023

Project Schedule

| | | | | | | | | | | | | | | | | | | | | | | | | | | Years | | | | | | | | | |
|--|----------|----|----|----|----|---------|---|---|---|----------|---|---|---|-------|----|----|----|-------|----|----|----|-----|----|----|----|-------|------|------|------|------|------|--|--|--|--|
| | 2022 | | | | | 2023 | | | | | | | | | | | | | | | | | | | | 23 | 2024 | 2025 | 2026 | 2027 | 2028 | | | | |
| | December | | | | | January | | | | February | | | | March | | | | April | | | | May | | | | June | | | | | | | | | |
| | | | | | | Weeks | | | | | | | | | | | | | | | | | | | | | | | | | | | | | |
| | 48 | 49 | 50 | 51 | 52 | 1 | 2 | 3 | 4 | 5 | 6 | 7 | 8 | 9 | 10 | 11 | 12 | 13 | 14 | 15 | 16 | 17 | 18 | 19 | 20 | 21 | 22 | 23 | 24 | | | | | | |
| Early Bid Package - Enabling Work | | | | | | | | | | | | | | | | | | | | | | | | | | | | | | | | | | | |
| Main Package Prequalification (RFQ responses due 12/1) | | | | | | | | | | | | | | | | | | | | | | | | | | | | | | | | | | | |
| Main Package Bid Set Documents Complete | | | | | | | | | | | | | | | | | | | | | | | | | | | | | | | | | | | |
| Main Package Bid Room Review and Finalization | | | | | | | | | | | | | | | | | | | | | | | | | | | | | | | | | | | |
| Final Main Package Bid Package Issued to Bidders | | | | | | | | | | | | | | | | | | | | | | | | | | | | | | | | | | | |
| Main Package Bidding Period | | | | | | | | | | | | | | | | | | | | | | | | | | | | | | | | | | | |
| GMP Agreed | | | | | | | | | | | | | | | | | | | | | | | | | | | | | | | | | | | |
| Final Documents | | | | | | | | | | | | | | | | | | | | | | | | | | | | | | | | | | | |
| NTP for Main Package Construction Issued | | | | | | | | | | | | | | | | | | | | | | | | | | | | | | | | | | | |
| GMP Amendment/Issue Subcontracts/Mobilize | | | | | | | | | | | | | | | | | | | | | | | | | | | | | | | | | | | |
| Main Package Construction | | | | | | | | | | | | | | | | | | | | | | | | | | | | | | | | | | | |



Main Package – Unofficial Filed Sub-Bid Results

| Firm | Certification | Bid Amount |
|--|---------------|-------------|
| Miscellaneous and Ornamental Iron | | |
| Quinn Brothers of Essex, Inc. | | \$2,798,300 |
| V&G Iron Works, Inc. | | ----- |
| United Steel Inc. | | ----- |
| SMJ Metal Company Inc. | | ----- |
| American Steel Fabricators, LLC | | ----- |
| | | |
| Waterproofing, Dampproofing, and Caulking | | |
| Superior Caulking & Waterproofing Co., Inc. | | \$3,188,000 |
| Folan Waterproofing & Construction Co., Inc. | WBE | \$4,933,000 |
| Beacon Waterproofing & Restoration, Inc. | | ----- |
| Heritage Restoration, LLC | | ----- |
| The Waterproofing Company, LLC | | ----- |
| Armani Restoration, Inc. | | ----- |
| P.J. Spillane Co., Inc. | | ----- |



COMMODORE | WALSH
HOLYOKE JOINT VENTURE

Main Package Procurement April 2023

Main Package – Unofficial Filed Sub-Bid Results

| Firm | Certification | Bid Amount |
|--|---------------|-------------|
| Roofing and Flashing | | |
| Greenwood Industries, Inc. (Bid Withdrawn) | | \$2,781,000 |
| Titan Roofing, Inc. | MBE | \$3,383,129 |
| Rockwell Roofing, Inc. | | ----- |
| Capeway Roofing Systems, Inc. | | ----- |
| Reliable Roofing & Sheet Metal, LLC | | ----- |
| Stanley Roofing Co, Inc. | | ----- |
| Silktown Roofing, Inc. | | ----- |
| | | |
| Glass and Glazing | | |
| Chandler Architectural Products | | \$182,666 |
| Lizotte Glass, Inc. | | \$770,216 |
| R & R Window Contractors, Inc. | | ----- |
| GVW, Inc. | | ----- |
| Cherry Hill Glass Co., Inc. | | ----- |



Main Package – Unofficial Filed Sub-Bid Results

| Firm | Certification | Bid Amount |
|--|---------------|-------------|
| Tile | | |
| Select Tile, Marble & Flooring | | \$1,347,612 |
| Allegheny Contract Flooring Inc | | \$1,520,000 |
| Jantile Boston LLC | | \$1,698,328 |
| Ayotte & King For Tile, Inc., | WBE | \$1,795,000 |
| Capital Carpet & Flooring Specialist, Inc. | | \$1,796,445 |
| | | |
| Acoustical Tile | | |
| H. Carr & Sons, Inc. | | \$4,740,000 |
| Central Ceilings Inc. | | \$6,530,000 |
| Conn Acoustics, Inc. | | \$7,908,985 |
| The Cheviot Corp. | | ----- |
| | | |
| Resilient Floors | | |
| Ayotte & King For Tile, Inc., | WBE | \$3,575,000 |
| Capital Carpet & Flooring Specialist, Inc. | | \$3,758,775 |
| Allegheny Contract Flooring, Inc. | | ----- |
| CJM Services, Inc. | | ----- |



COMMODORE | WALSH
HOLYOKE JOINT VENTURE

Main Package Procurement April 2023

Main Package – Unofficial Filed Sub-Bid Results

| Firm | Certification | Bid Amount |
|--|---------------|-------------|
| Terrazzo | | |
| Roman Mosaic and Tile Company | | \$777,011 |
| DEPAOLI MOSAIC COMPANY | WBE | \$924,429 |
| Joseph Cohn & Son | | \$1,129,565 |
| | | |
| Painting | | |
| John W. Egan Co., Inc. | | \$1,170,440 |
| Select Paint and Finishes | | \$1,256,000 |
| ML McDonald Sales Co. LLC | | \$1,695,000 |
| Soep Painting Corporation | | ----- |
| | | |
| Fire Protection Sprinkler Systems | | |
| Arden Engineering Constructors, LLC | | \$3,350,000 |
| SRI Fire Sprinkler, LLC | | \$3,448,800 |
| Wolverine Fire Protection Co. | | \$3,577,500 |
| Carlisle Engineering | | \$6,332,700 |
| Rustic Fire Protection, Inc. | | ----- |



COMMODORE | WALSH
HOLYOKE JOINT VENTURE

Main Package Procurement April 2023

Early Package – Work Force Report

Holyoke Veterans' Home - Early Enabling Package [As of March 2023]

| SUBCONTRACTOR | TOTAL HOURS | MINORITY (15.3%) | | WOMEN (6.9%) | |
|--|-----------------|------------------|---------------|---------------|---------------|
| | | HOURS | % | HOURS | % |
| American Environmental, Inc. | 448.00 | 96.00 | 33.33% | 352.00 | 66.67% |
| Atlantic Bridge & Engineering, Inc. | 213.00 | 25.00 | 16.78% | - | 0.00% |
| B-G Mechanical Contractors, Inc. | 339.00 | - | 0.00% | - | 0.00% |
| Carlisle Engineering, Inc. | 123.00 | - | 0.00% | - | 0.00% |
| Chicopee Industrial Contractors, Inc. | - | - | 0.00% | - | 0.00% |
| Collins Electric Co., Inc. | 321.50 | 16.00 | 6.53% | 8.00 | 3.27% |
| Edward F. Corcoran Plumbing & Heating | 3.00 | - | 0.00% | - | 0.00% |
| Insulation Contractor of New England LLC | - | - | 0.00% | - | 0.00% |
| Northeast Painting Associates, Inc. | - | - | 0.00% | - | 0.00% |
| Performance Testing and Balancing | - | - | 0.00% | - | 0.00% |
| Power Line Contractors, Inc. | 1,276.50 | 138.00 | 10.81% | - | 0.00% |
| Rockwell Roofing, Inc. | 167.25 | 46.75 | 27.95% | - | 0.00% |
| Sweeney Drywall Finishes Corp | 54.00 | - | 0.00% | - | 0.00% |
| T & M Equipment Corporation | 248.50 | 40.50 | 16.30% | 60.50 | 24.35% |
| TOTALS TO DATE | 3,193.75 | 362.25 | 11.34% | 420.50 | 13.17% |

Apprentice & Veteran work force goals will start being tracked in the main package work.



COMMODORE | WALSH
HOLYOKE JOINT VENTURE

Main Package Procurement April 2023



Goal Report(Current)

Report Date: 4/20/2023
Date Range: From 2/1/2023 to 4/20/2023

Project: HLY2102 DC1 CM Holyoke Veteran's Long Term Care Facility and Campus Framework

Sub To: Multiple Assignments

Contractor: Multiple Contractors

Minority: AFRICAN AMERICAN.ASIAN.ASIAN - A.BLACK - B.HISPANIC.HISPANIC - H.NATIVE

| Project Name | Contractor | Total Hours(Workers) | Minority | | | Women | | | Veteran | | |
|---|-----------------------------|-------------------------|-----------------|---------------|--------------|-----------------|---------------|-------------|----------------|--------------|-----------|
| | | | Hours(Workers) | % | Goal | Hours(Workers) | % | Goal | Hours(Workers) | % | Goal |
| HLY2102 DC1 CM Holyoke Veteran's Long Term Care Facility and Campus Framework | ABC Environmental, Inc. | 40.00(1) | 40.00(1) | 100.00% | 15.3% | 40.00(1) | 100.00% | 6.9% | - | 100.00% | 7% |
| | Coastal Bridge & Eng., Inc. | 160.00(5) | - | 0.00% | 15.3% | - | 0.00% | 6.9% | - | 0.00% | 7% |
| | Total for Project: | 200.00(6) | 40.00(1) | 20.00% | 15.3% | 40.00(1) | 20.00% | 6.9% | 0.00 | 0.00% | 7% |

The accuracy of this report is dependent on the User inputting the correct data. By downloading a copy of this report, you agree to this.



Goal Report(Requested)

Report Date: 4/20/2023
Date Range: From 2/1/2023 to 4/20/2023

Project: HLY2102 DC1 CM Holyoke Veteran's Long Term Care Facility and Campus Framework

Sub To: Multiple Assignments

Contractor: Multiple Contractors

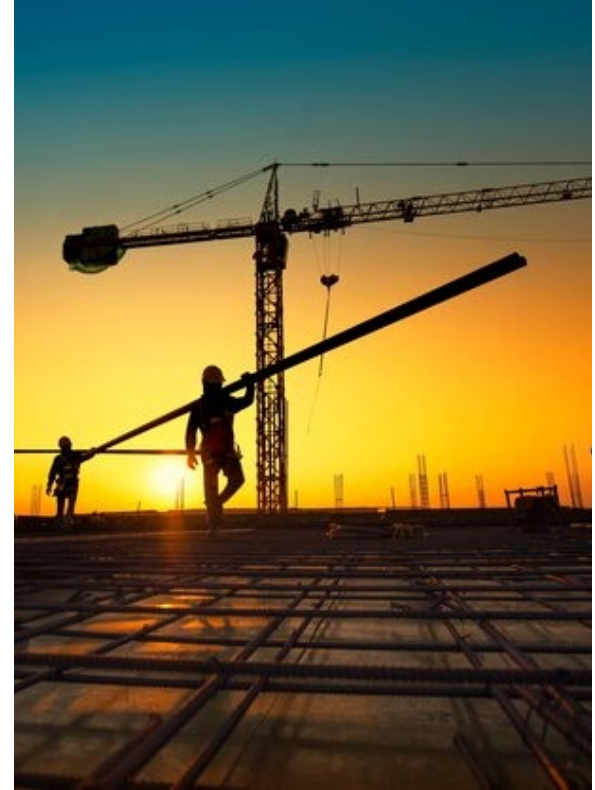
Minority: AFRICAN AMERICAN.ASIAN.ASIAN - A.BLACK - B.HISPANIC.HISPANIC - H.NATIVE

| Project Name | Contractor | Total Hours(Workers) | Minority | | | Women | | | Minority & Women | | |
|---|-----------------------------|-------------------------|-----------------|---------------|--------------|-----------------|---------------|-------------|------------------|---------------|-----------|
| | | | Hours(Workers) | % | Goal | Hours(Workers) | % | Goal | Hours(Workers) | % | Goal |
| HLY2102 DC1 CM Holyoke Veteran's Long Term Care Facility and Campus Framework | ABC Environmental, Inc. | 40.00(1) | 40.00(1) | 100.00% | 15.3% | 40.00(1) | 100.00% | 6.9% | 40.00(1) | 100.00% | 7% |
| | Coastal Bridge & Eng., Inc. | 160.00(5) | - | 0.00% | 15.3% | - | 0.00% | 6.9% | - | 0.00% | 7% |
| | Total for Project: | 200.00(6) | 40.00(1) | 20.00% | 15.3% | 40.00(1) | 20.00% | 6.9% | 40.00(1) | 20.00% | 7% |

The accuracy of this report is dependent on the User inputting the correct data. By downloading a copy of this report, you agree to this.



QUESTIONS



COMMODORE | WALSH
HOLYOKE JOINT VENTURE

Project Update - April 2023