

Holyoke Soldiers' Home Access, Inclusion and Diversity Committee – December Meeting

December 17, 2021

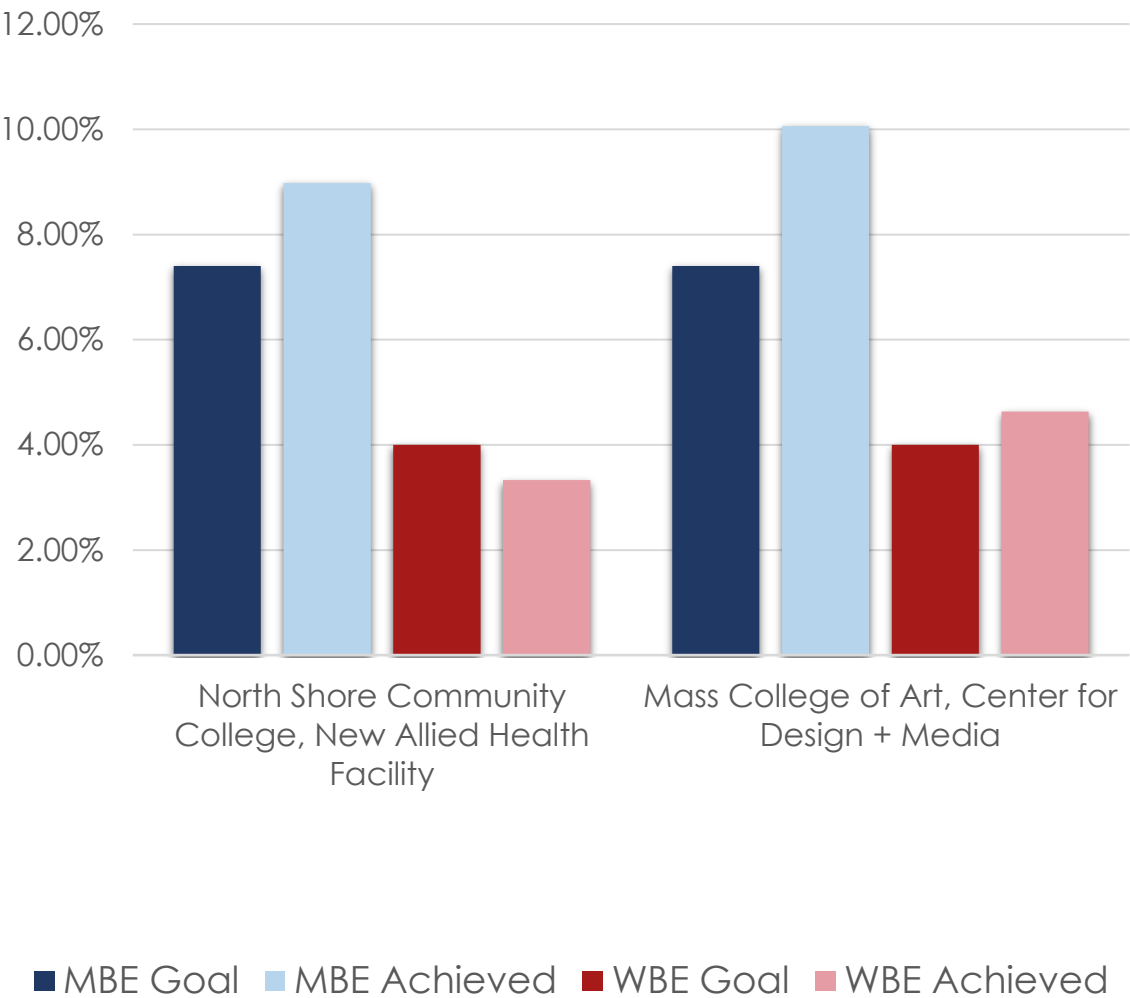


COMMODORE | WALSH
HOLYOKE JOINT VENTURE

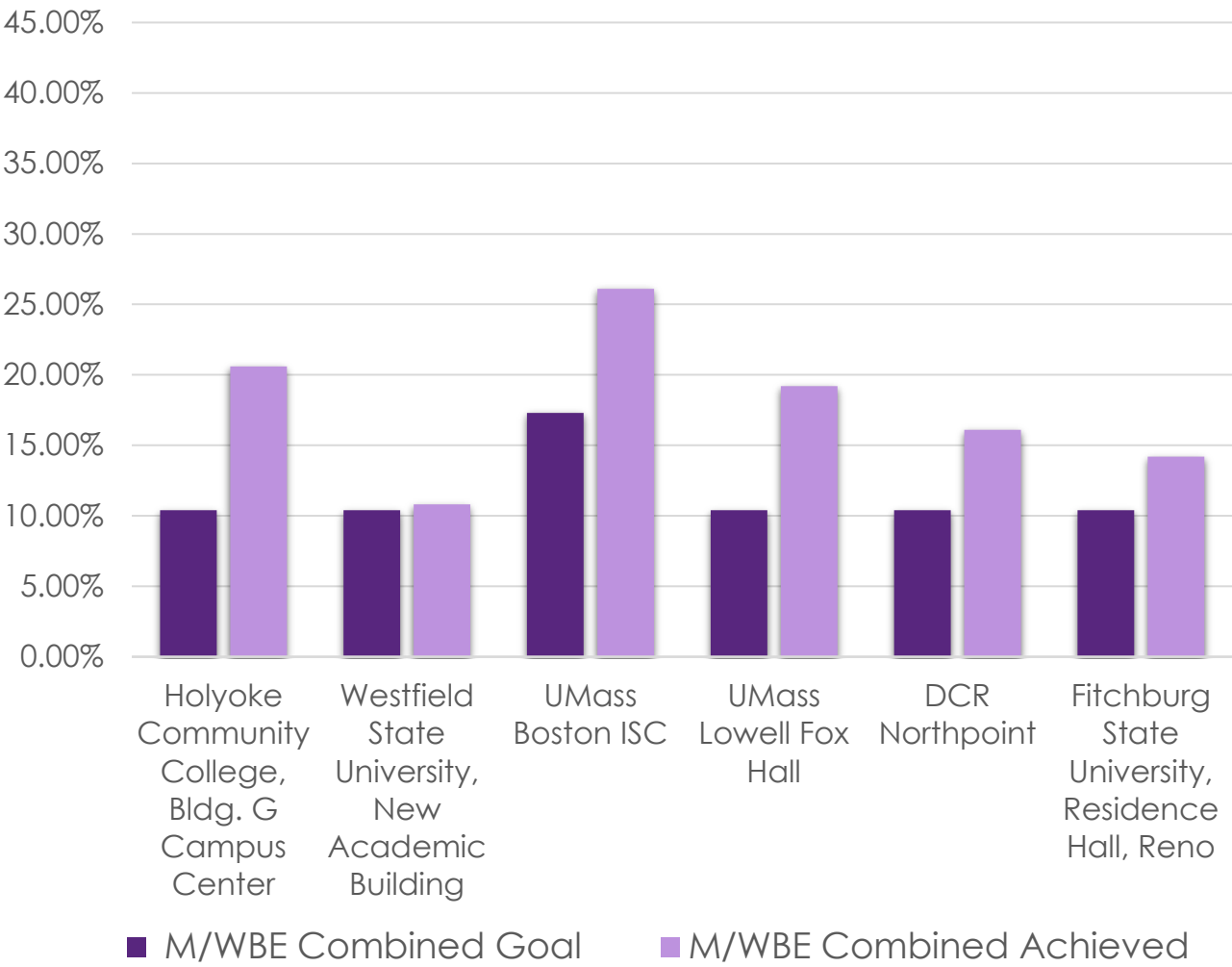
WALSH BROTHERS
Since 1901

PAST PROJECT MBE/WBE PERFORMANCE

MBE/WBE

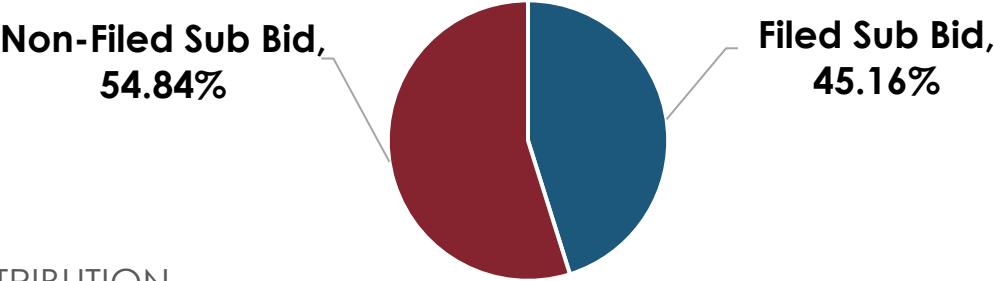


MBE/WBE Combined



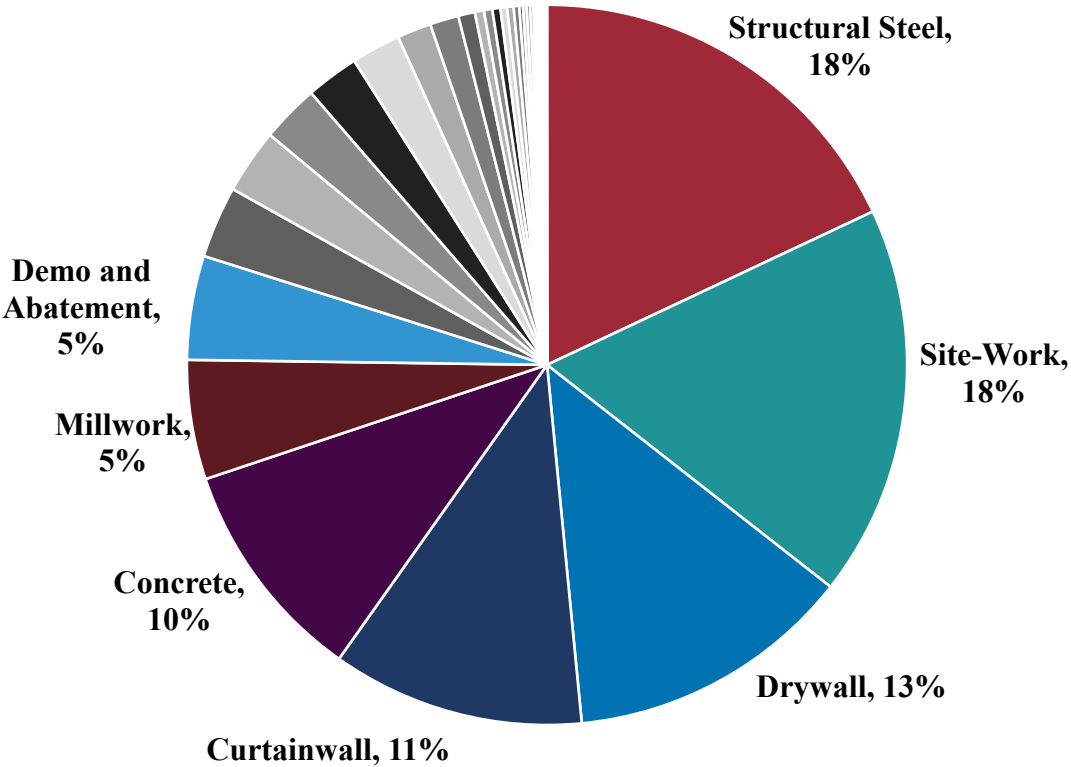
FILED VS NON-FILED SUB BID ESTIMATE DISTRIBUTION

PERCENTAGE OF DIRECT COST



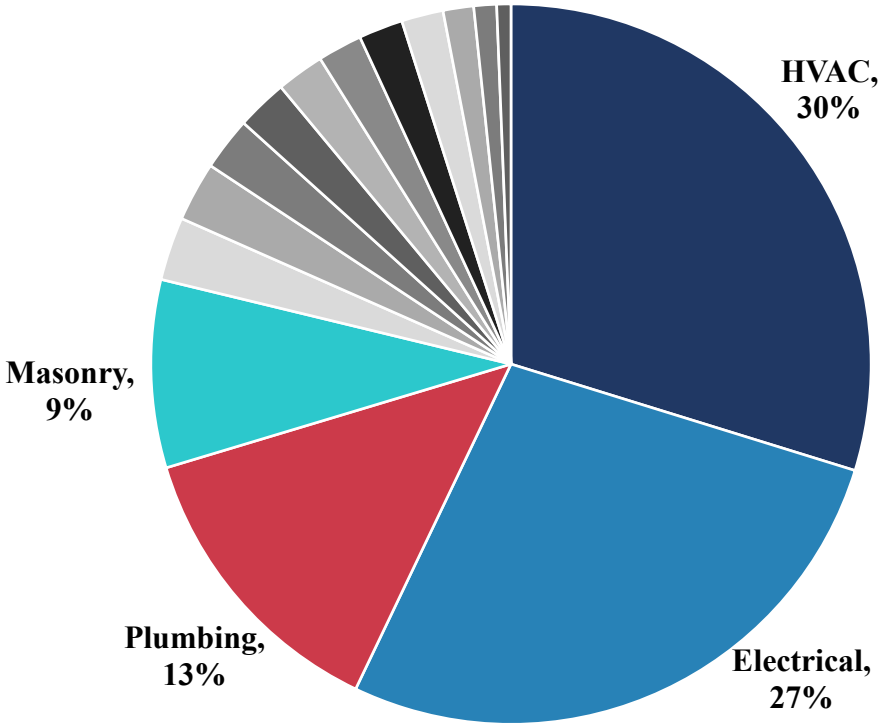
NON-FILED SUB BID DISTRIBUTION

7 Packages: **85%** of Total



FILED SUB BID DISTRIBUTION

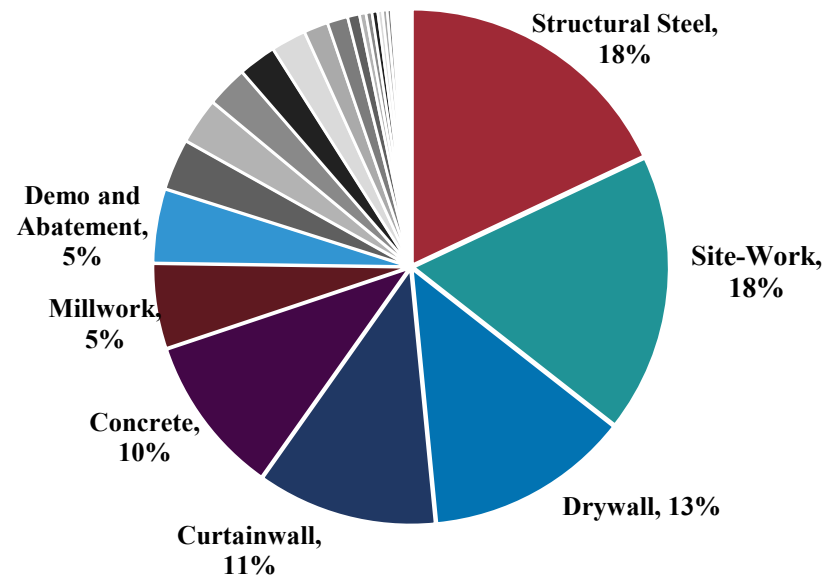
4 Packages: **78%** of Total



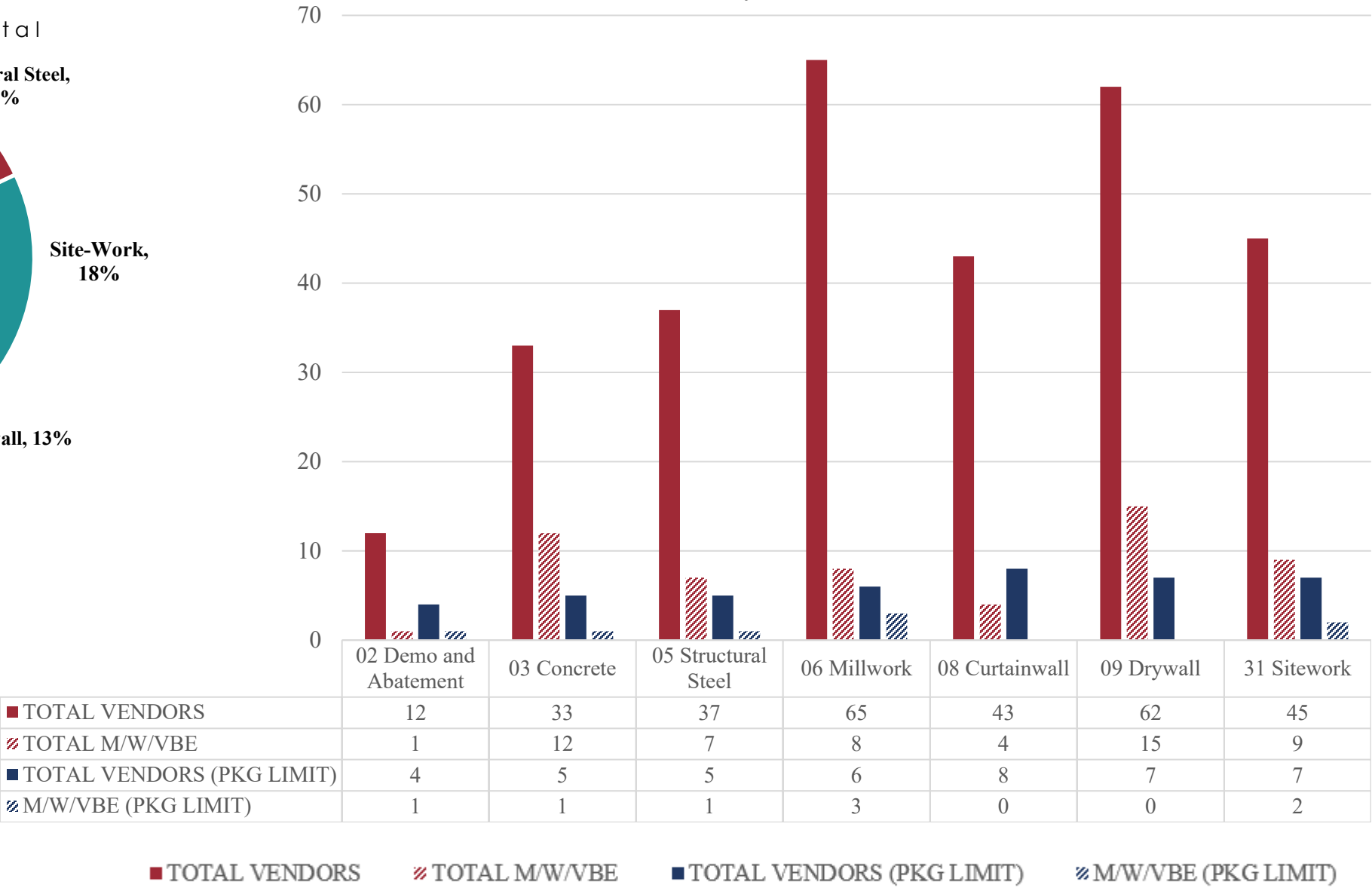
NON-FILED SUB BID SUBCONTRACTOR POOL

NON-FILED SUB BID DISTRIBUTION

7 Packages: 85% of Total



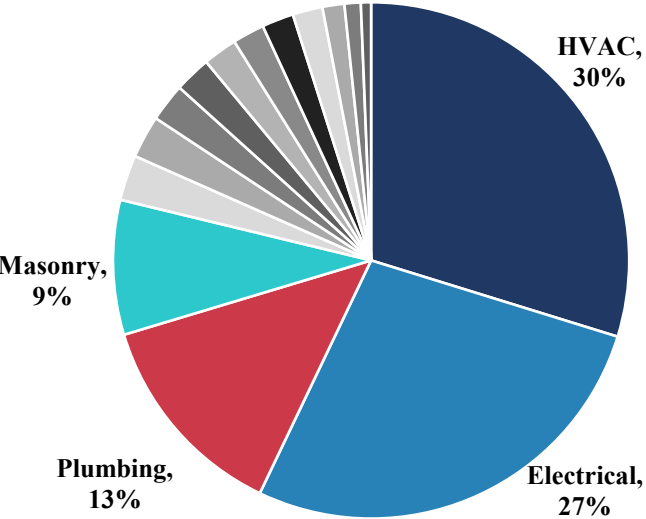
WBI Sub Pool Analysis - Non-Filed Sub Trade Bid



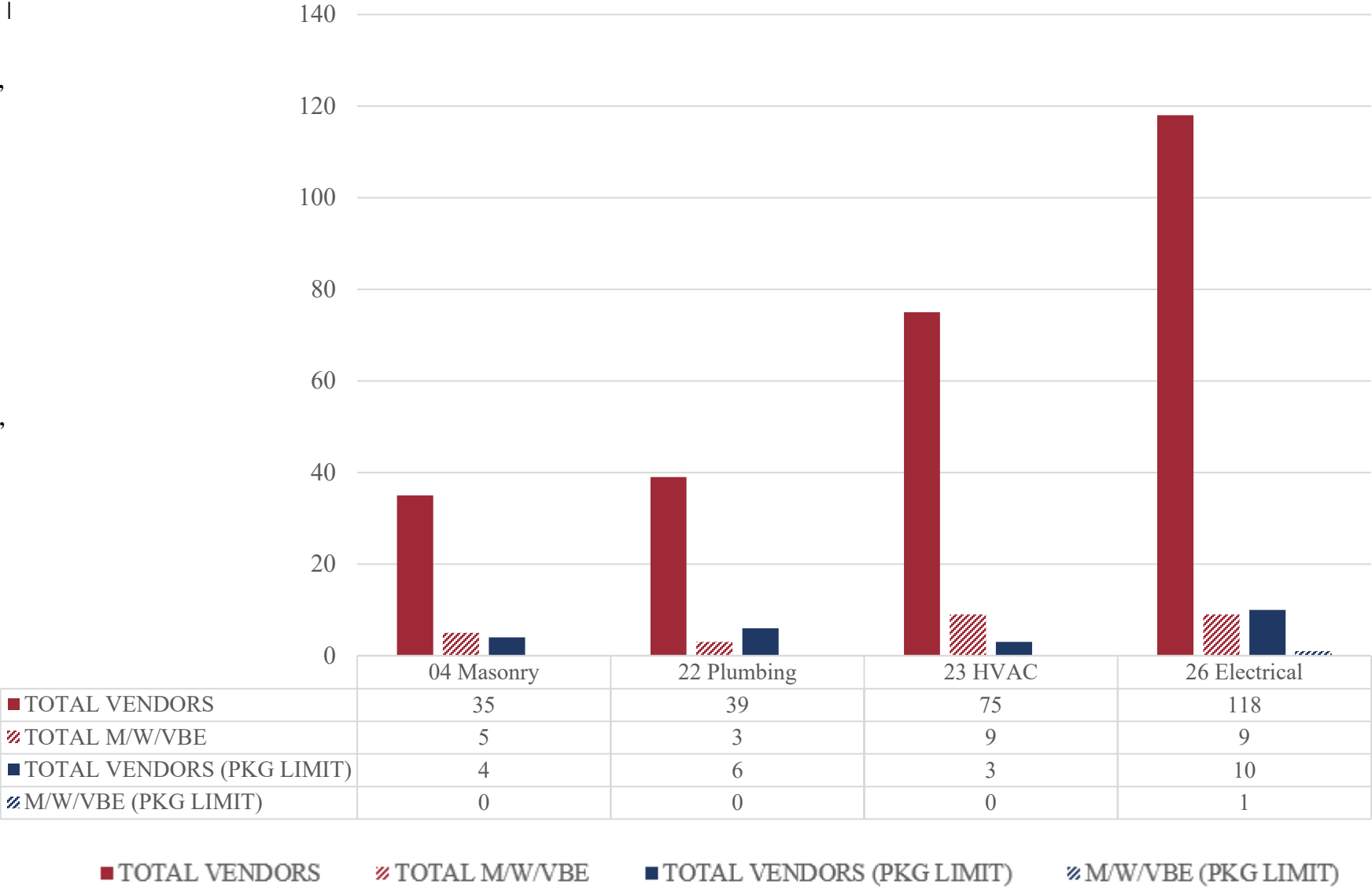
FILED SUB BID DCAMM CERTIFIED SUBS

FILED SUB BID DISTRIBUTION

4 Packages: **78%** of Total



WBI Sub Pool Analysis - DCAMM Certified Subs – Filed-sub Trade Bid



M/W/VBE CHALLENGES

State 149A Mass General Laws for subcontractor procurement.

Project size and large bid packages.

Complexity of the Project; site topography, high-rise life safety systems, and long-term care facility.

Location of project and available workforce.

Project schedule and procurement timeline.

DCAMM certification process and prequalification requirements for Filed-Sub Bidders.

SDO certification as a prerequisite for M/W/VBE credit.

Final terms and conditions of Project Labor Agreement.

M/W/VBE STRATEGY	FILED SUB BID	NON-FILED SUB BID
Conduct outreach and recruitment efforts to facilitate certification and participation of M/W/VBEs.	✓	✓
Unbundle larger scope packages to increase M/W/VBEs participation.	?	✓
Require prime subcontractors to include M/W/VBE lower tier contractors.	X	✓
Encourage JV/Mentor partnerships.	✓	✓
Consider programs and incentives for contractors that meet or exceed goals such as “quick pay” programs to expedite payment and working capital.	✓	✓
Explore technical assistance grants to facilitate participation in bid process.	✓	✓

PACKAGE SIZE	FILED SUB BID	NON-FILED SUB BID
Greater than \$20M	23 HVAC 26 ELECTRICAL	05 STRUCTURAL STEEL 31 SITEWORK
\$10 – \$20M	22 PLUMBING	09 DRYWALL 08 EXTERIOR GLAZING 03 CONCRETE
\$5 – \$10M	04 MASONRY	06 MILLWORK 02 BUILDING DEMOLITION & ABATEMENT
Less than \$5M	21 FIRE PROTECTION 09 RESILIENT FLOORING 14 ELEVATORS 09 ACOUSTICAL CEILING TILE (ACT) 05 MISCELLANEOUS METALS 07 ROOFING 09 TILE 07 WATERPROOFING 09 PAINTING 08 INTERIOR GLAZING 09 TERRAZZO	32 LANDSCAPING 10 SPECIALTIES 33 GEOTHERMAL 11 COMMERCIAL FOOD SERVICE EQUIPMENT 08 DOORS, FRAMES, HARDARE 07 APPLIED FIREPROOFING 09 RESINOUS FLOORING 12 WINDOW TREATMENTS 10 SIGNAGE 13 GREENHOUSE 06 ROUGH CARPENTRY 09 ACOUSTICAL WALL PANELS 10 OPERABLE PARTITIONS 32 FENCING 32 PREFABRICATED BRIDGES 11 PATIENT LIFTS 07 ACOUSTICAL SPRAY - K-13 08 OVERHEAD DOORS LOADING DOCK EQUIPMENT 09 CARPET 07 SPRAYED INSULATION 11 WASTE HANDLING EQUIPMENT 11 MORTUARY EQUIPMENT 10 FIREPLACES 11 RESIDENTIAL APPLIANCES 32 TERRACE SHELTER 14 BRIDGE CRANE 32 BUS DROP-OFF

Thank You

Questions/Suggestions?



COMMODORE | WALSH
HOLYOKE JOINT VENTURE

WALSH BROTHERS
Since 1901