

Holyoke Soldiers' Home Access, Inclusion and Diversity Committee – January Meeting

January 28, 2022



COMMODORE | WALSH
HOLYOKE JOINT VENTURE

WALSH BROTHERS
Since 1901

AGENDA

- 01 ANTICIPATED MAIN PACKAGE
ESTIMATE DISTRIBUTION
- 02 ANTICIPATED EARLY PACKAGE
ESTIMATE DISTRIBUTION
- 03 ANTICIPATED EARLY PACKAGE SIZES
- 04 ANTICIPATED EARLY PACKAGE KEY DATES

MAIN PACKAGE SIZES: \$5M AND OVER

PACKAGE SIZE	FILED SUB BID	NON-FILED SUB BID
> \$20M	23 – HVAC 26 – ELECTRICAL	05 – STRUCTURAL STEEL 31 – SITEWORK
\$15M - \$20M	22 – PLUMBING	08 – EXTERIOR GLAZING 09 – DRYWALL
\$10M - \$15M		03 – CONCRETE
\$5M - \$10M	04 - MASONRY	02 – DEMO AND ABATEMENT 06 – MILLWORK

MAIN PACKAGE SIZES: \$250K TO \$5M

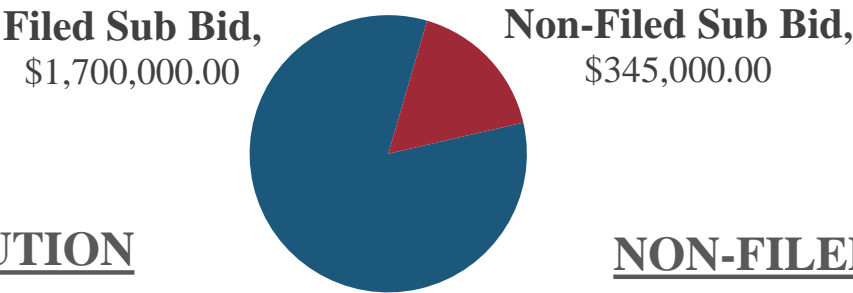
PACKAGE SIZE	FILED SUB BID	NON-FILED SUB BID
\$1M – \$5M	05 – MISC METALS 07 – ROOFING 07 – WATERPROOFING 08 – INTERIOR GLAZING 09 – ACT 09 – RESILIENT FLOORING 09 – TILE 09 - PAINTING 14 – ELEVATORS 21 – FIRE PROTECTION	08 – DOORS, FRAMES, HARDWARE 07 – FIREPROOFING 09 – RESINOUS FLOORING 10 – SPECIALTIES 11 – FOOD SERVICE EQUIPMENT 12 – WINDOW TREATMENTS 32 – LANDSCAPING 33 – GEOTHERMAL
\$500K - \$1M	09 - TERRAZZO	10 – SIGNAGE 13 – GREENHOUSE
\$250K - \$500K		06 – ROUGH CARPENTRY 09 – ACOUSTIC WALL PANELS 10 – OPERABLE PARTITIONS 32 – FENCING

MAIN PACKAGE SIZES: UNDER \$250K

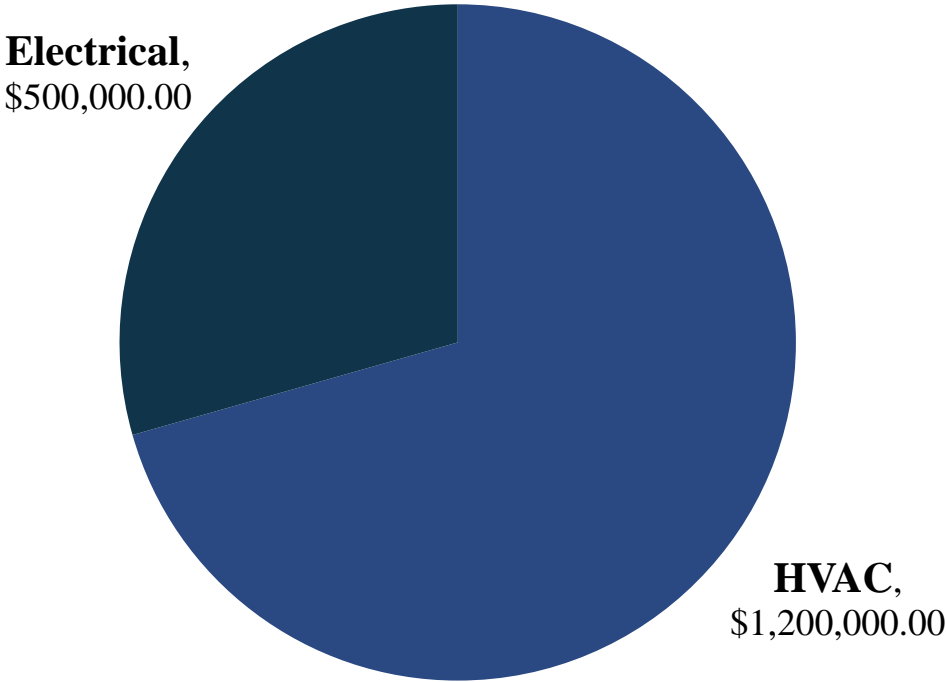
PACKAGE SIZE	FILED SUB BID	NON-FILED SUB BID
\$100K - \$250K		07 – ACOUSTIC SPRAY 07 – SPRAYED INSULATION 08 – OVERHEAD DOORS 09 – CARPET 11 – WASTE HANDLING EQUIP 11 – MORTUARY EQUIP 11 – PATIENT LIFTS 32 – PREFAB BRIDGES
<\$100K		10 – FIREPLACES 11 – RESIDENTIAL APPLIANCES 14 – BRIDGE CRANE 32 – TERRACE SHELTER 32 – BUS DROP OFF

Early Packages: Filed vs Non-Filed Sub Bid Estimate Distribution

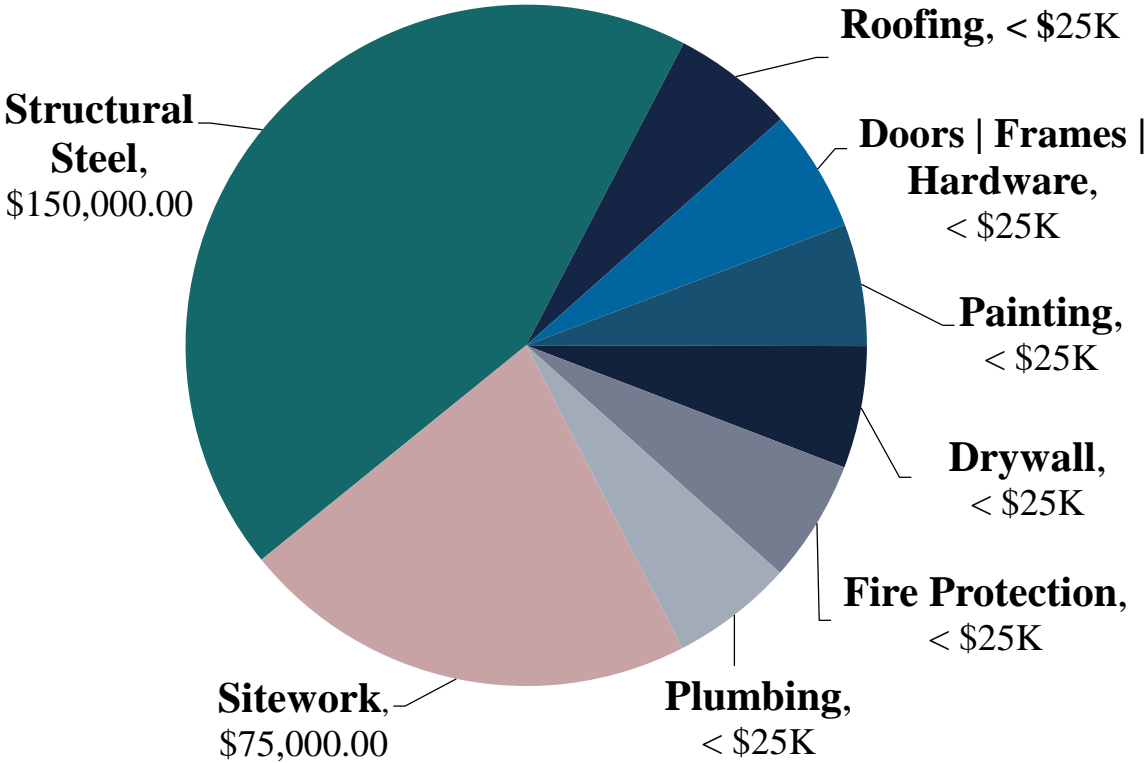
PERCENTAGE OF DIRECT COST



FILED SUB BID DISTRIBUTION



NON-FILED SUB BID DISTRIBUTION



EARLY PACKAGE SIZES

PACKAGE SIZE	FILED SUB BID	NON-FILED SUB BID
Greater than \$1MM	23 HVAC	
\$500K - \$1MM	26 Electrical	
\$100K - \$500K		05 Structural Steel
\$25K - \$100K		32 Sitework
<\$25K		07 Roofing 09 Doors, Frames, HW 09 Drywall 21 Fire Protection 22 Plumbing

EARLY PACKAGE: ANTICIPATED KEY DATES FOR CERTIFICATION / PRE-QUALIFICATION

SDO Certified

Early Package – Filed Sub Bidders: 4/21/22

Early Package – Non-Filed Sub Bidders: 5/23/22

DCAMM Certified

Early Package – Filed Sub Bidders must be DCAMM Certified: 4/21/22

C | W Prequalified

Early Package – Non-Filed Sub Bidders must be C | W Prequalified: 5/23/22

Thank You

Questions/Suggestions?



COMMODORE | WALSH
HOLYOKE JOINT VENTURE

WALSH BROTHERS
Since 1901