

Chiller Early Package Procurement Results



COMMODORE | WALSH
HOLYOKE JOINT VENTURE

Early Bid Packages & Procurement September 2022

Chiller Early Bid Packages – Filed Sub-Bid Official Results

Group By	Company Name	Bid Amount	
07 00 02 – Roofing and Flashing	Rockwell Roofing	\$68,000	
22 00 01 – Plumbing	E.F. Corcoran Plumbing & Heating	\$32,786	
23 00 00 - HVAC	B-G Mechanical	\$989,800	HVAC included 1% MBE/WBE participation goal for non-core work -- anticipated to be met with hoisting (crane) subcontractor valued at \$17,978.
26 00 00 – Electrical	Collins Electric Co	\$294,457	Low Bidder confirmed material MBE/WBE participation for app. \$6,750 during descope (\$45,000 materials)



Chiller Early Bid Packages – Non-Filed Sub-Bid Results

Group By	Bid Amount	
Division 5 - Steel	\$288,040	WBE Firm, providing app. 10% towards MBE/WBE participation for the total overall early package.
Division 8 - Doors, Frames & Hardware	\$6,635	Materials only.
Division 21 - Fire Protection	\$29,620	
Division 2 - Earthwork	\$73,035	WBE Firm, providing app. 2% towards MBE/WBE participation for the total overall early package.



Chiller Early Bid Packages – Non-Filed Sub-Bid

Preliminary Non-Filed Bid Packages (Under Review)

- **Demolition** – C|W expects to recommend a MBE subcontractor.
- **Drywall** – C|W expects to recommend a firm that is majority owned.
- **Painting** – (smaller package) C|W expects to recommend a firm that is majority owned.

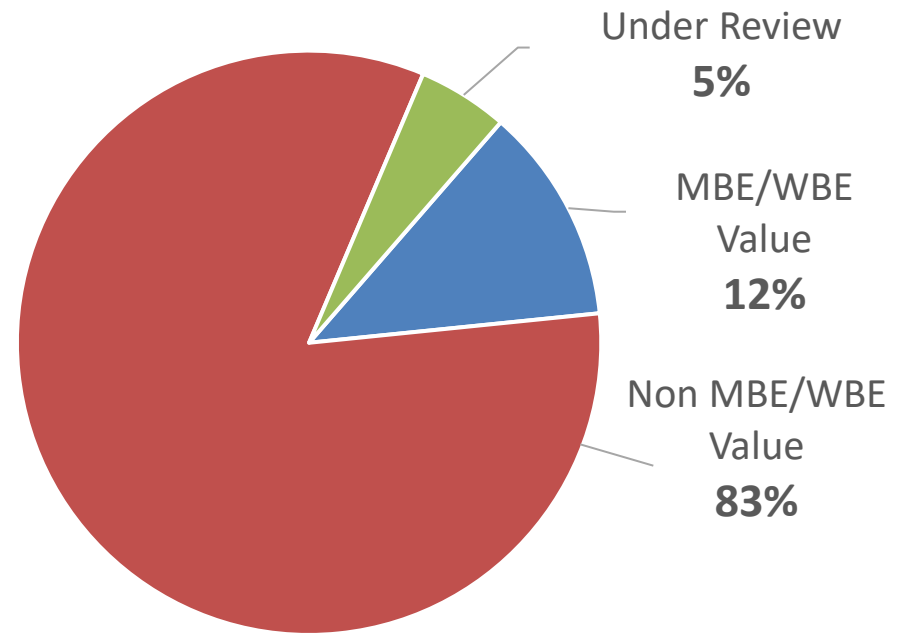


Chiller Early Bid Packages – Non-Filed Sub-Bid

Anticipated MBE/WBE Participation to date for Chiller Early Package

OVERALL MBE /WBE PERCENTAGES TO DATE

- Currently 12% MBE/WBE participation is anticipated.
- Additional potential MBE/WBE participation is being explored for sub- subcontracts.



Outreach Ongoing



Massachusetts Construction Opportunities Event

Join us to find out about upcoming opportunities for subcontractors, vendors and suppliers to get involved on upcoming construction projects on publicly owned buildings.

DATE(S):	September 15, 2022	10:00 - 11:30 a.m.
	October 13, 2022	2:00 - 3:30 p.m.
	November 10, 2022	10:00 - 11:30 a.m.
	December 8, 2022	2:00 - 3:30 p.m.
COST:	Free	
LOCATION:	Virtual - Zoom meeting information sent when registered	
REGISTRATION:	https://www.eventbrite.com/cc/massachusetts-construction-opportunities-event-338679	

Representatives from the state agency responsible for most of the Commonwealth's major building construction, the Division of Capital Asset Management and Maintenance (DCAMM), a construction management firm involved in a major public building project, Commodore|Walsh Joint Venture (C|W), the Massachusetts Supplier Diversity Office (SDO) that certifies minority, women and veteran owned business to work on public projects, and other knowledgeable industry professionals will be available to answer questions and inform interested attendees on how they can get involved in public building projects.

- Projects throughout Massachusetts, Western and Central Mass. businesses strongly encouraged to attend.
- Projects include significant opportunities for minority owned, women owned and veteran owned businesses to participate.
- All construction services contractors, subcontractors, suppliers, and Small, Local, MBE, WBE, VBE, SDVOBs are strongly encouraged to attend.

Upcoming projects include: Holyoke Soldiers Home, Fire Services SE Campus, Site Infrastructure and Burn Building, and more.

Join us - construction subcontractors, vendors, and suppliers are all invited!

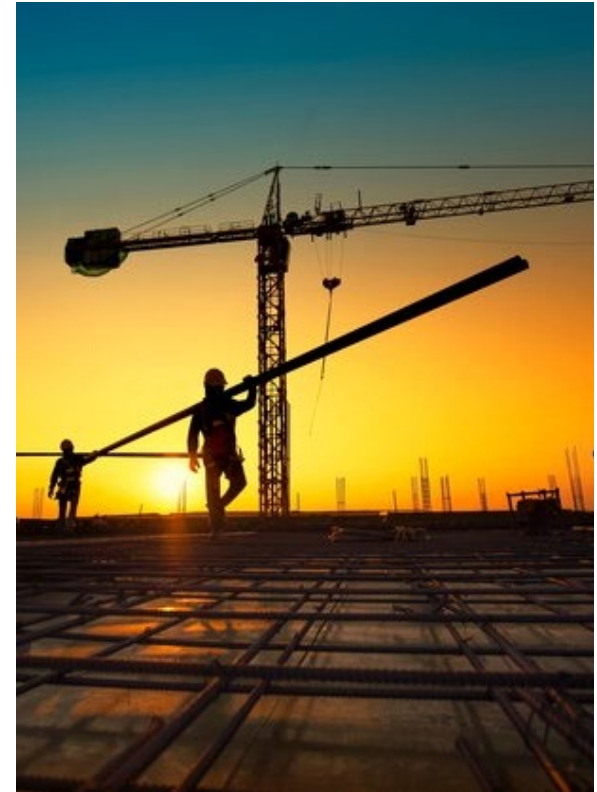
Trades include: Electrical, HVAC, Sitework, Plumbing, Fire Protection, Drywall, Painting, Roofing, Building Exterior, Paving, Steel, Masonry, Concrete, Demo and Abatement, Millwork, Flooring, Landscaping, Construction Supply and Equipment, Overhead Doors, Insulation, Fencing, Signage and many more.



COMMODORE | WALSH
HOLYOKE JOINT VENTURE

Early Bid Packages & Procurement September 2022

QUESTIONS



COMMODORE | WALSH
HOLYOKE JOINT VENTURE

Early Bid Packages & Procurement September 2022