

Soldiers' Home In Holyoke

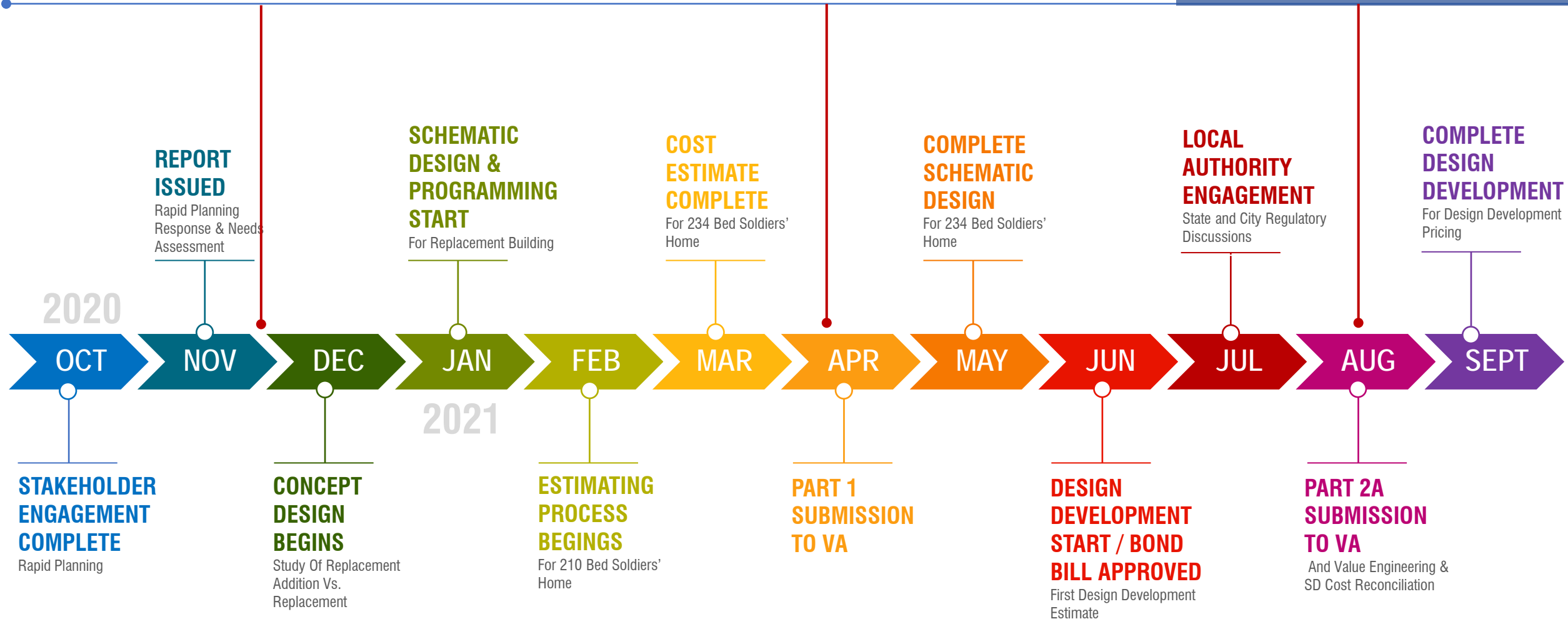
Project Update | October 29, 2021



1. **Project Schedule**
 - Past 12 months
 - Current and Next Steps
2. **Rapid Planning & Needs Assessment**
3. **Project Overview**
 - Existing vs Proposed Program
 - Design Concept
 - Floor Plans
 - Landscape & Exterior Spaces
4. **Ongoing Design Work**
5. **Next Steps**
6. **Questions/ Discussion**



Project Timeline to Date



A culmination of extensive stakeholder outreach (Aug 2020 – October 2020)

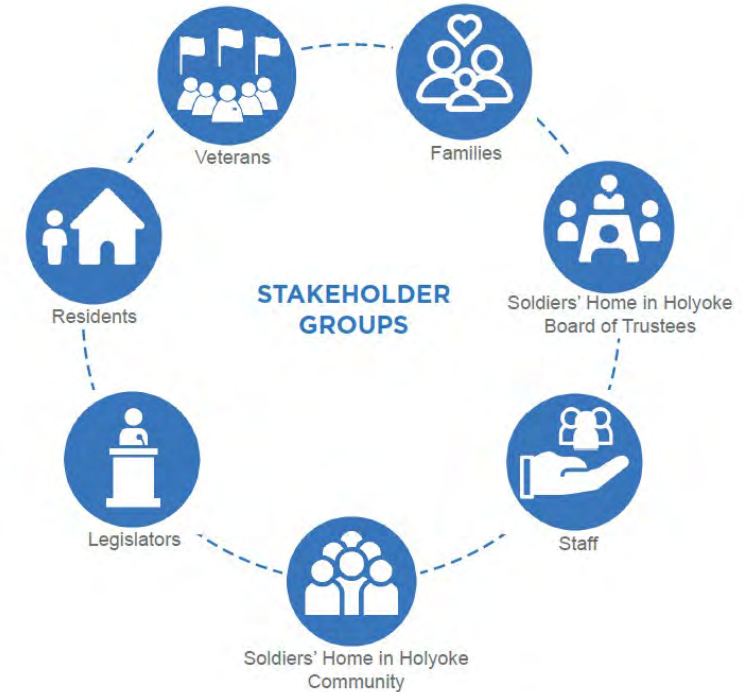
Includes outreach to all veteran residents of the Home, their family members and healthcare proxies, Holyoke Soldiers' Home employees, Massachusetts veterans' groups, legislators, and local and federal partners

Soldiers' Home in Holyoke
Rapid Planning Report
Needs Assessment and Implementation Roadmap
NOVEMBER 11, 2020



Executive Office of Health and Human Services
Department of Veterans Services

PAYETTE



Needs Assessment & Rapid Planning (Sept' 20 – Nov' 20)

A culmination of extensive stakeholder outreach

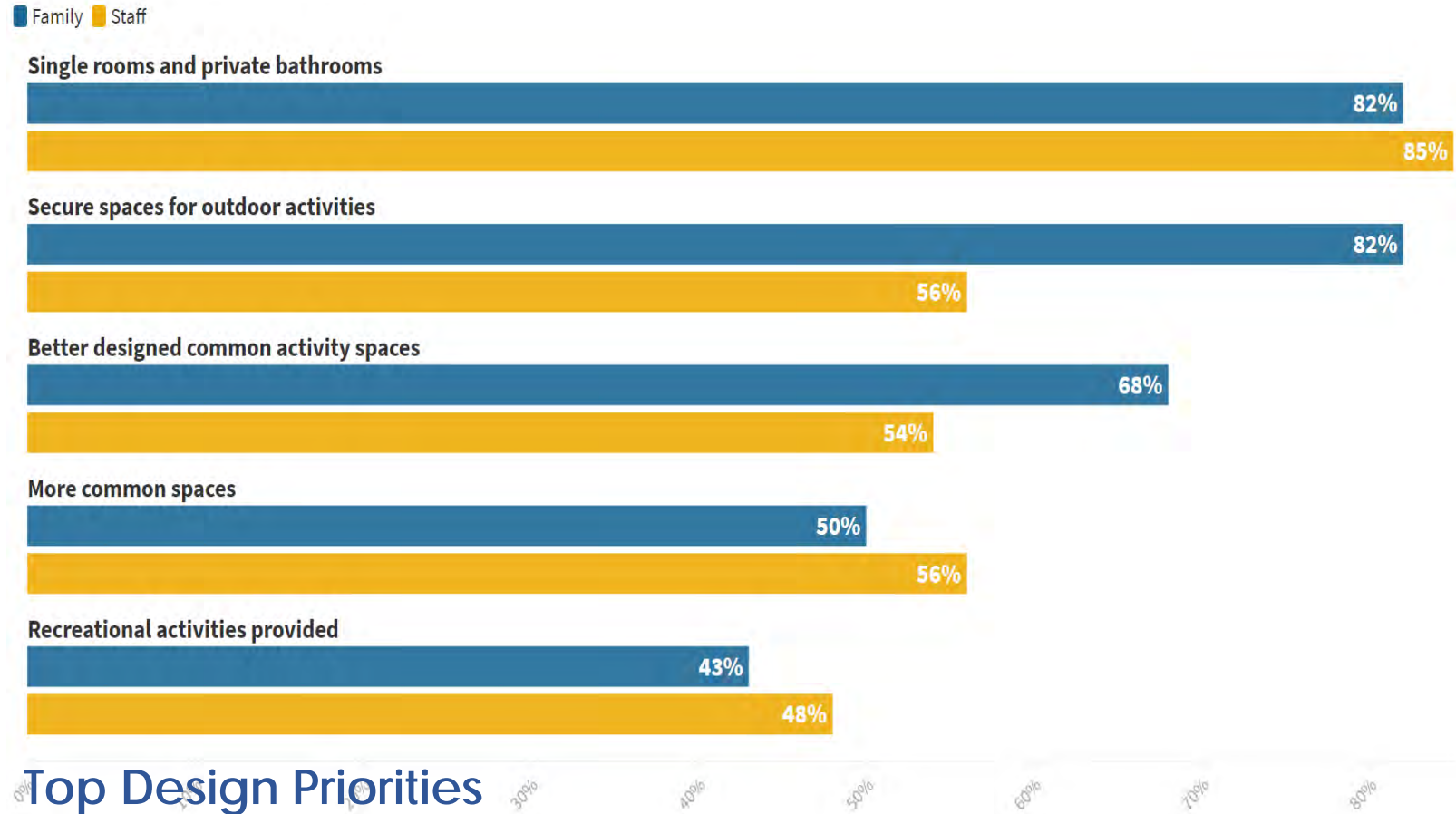
352 Survey Respondents

as of Oct 07, 2020

5	Residents (1.4%)
63	Family Members (18%)
51	Staff Members* (14.5%)
56	Federal/State/Local Officials (16%)
92	Veteran Community Members** (26%)
85	Others (24%)

* 27% of Soldiers' Home Staff

** Non-resident veterans





EXISTING PROGRAM

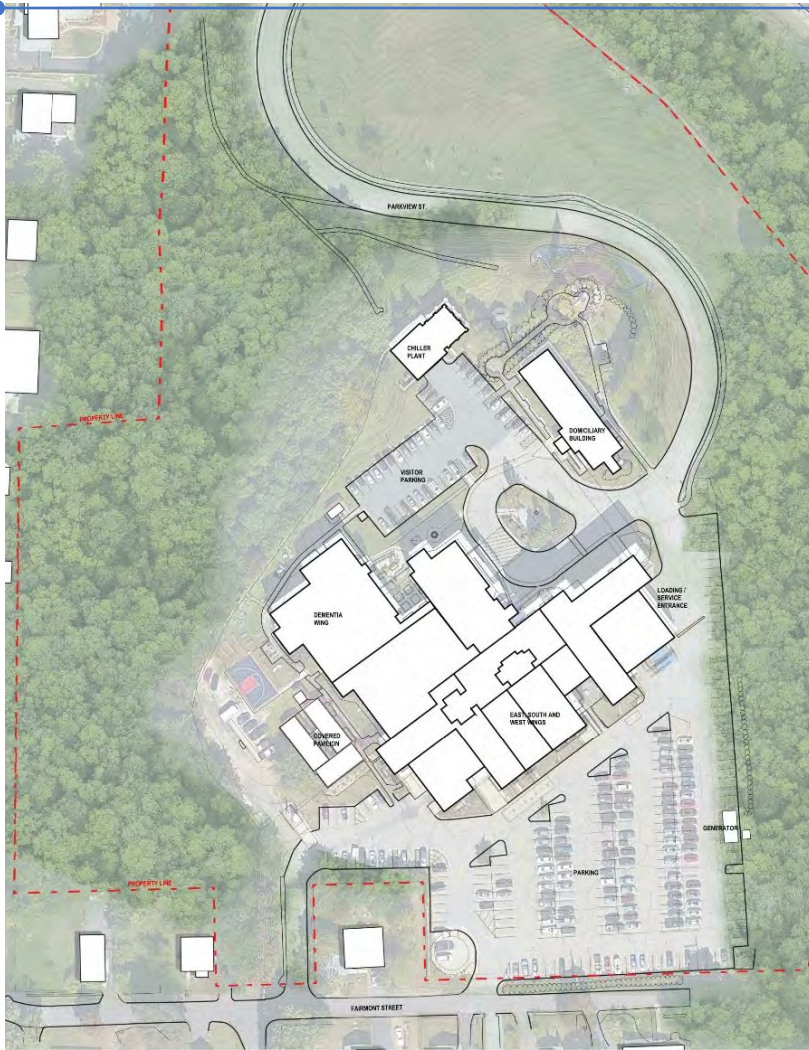
- 235 Long-term Care Beds; 230,000 GSF +/-
- Shared rooms, shared baths
- No Adult Day Health
- Under-utilized outpatient care
- 30 Bed Domiciliary Program



PROPOSED PROGRAM

- 234 Long-term Care Beds; 350,000 GSF; 260 parking spaces
- Mostly private beds with private baths
- Community spaces, nursing support, and kitchen in each floor
- Dedicated 32-bed memory-care floor
- 40-50 person Adult Day Health Program
- Upgraded clinical spaces for dental care
- Variety of outdoor spaces – Dementia Garden, Barbeque Terrace, Memorial Garden and reflective pool, Green House

Phasing sequence driven by site constraints



Existing Condition

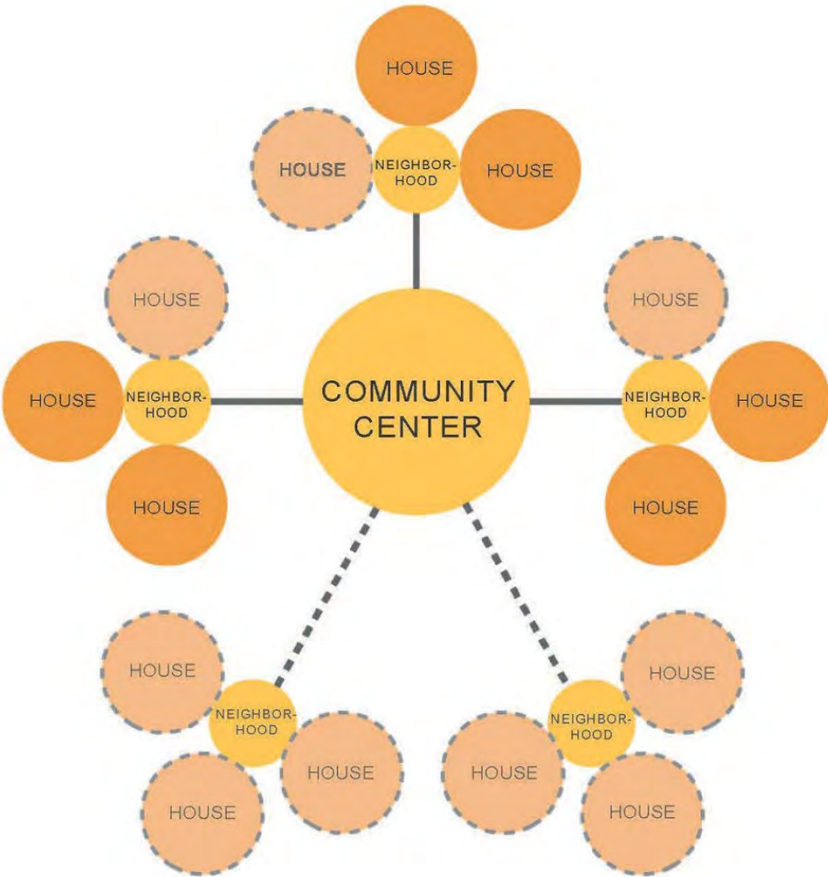


New building completion & Occupancy by 2025

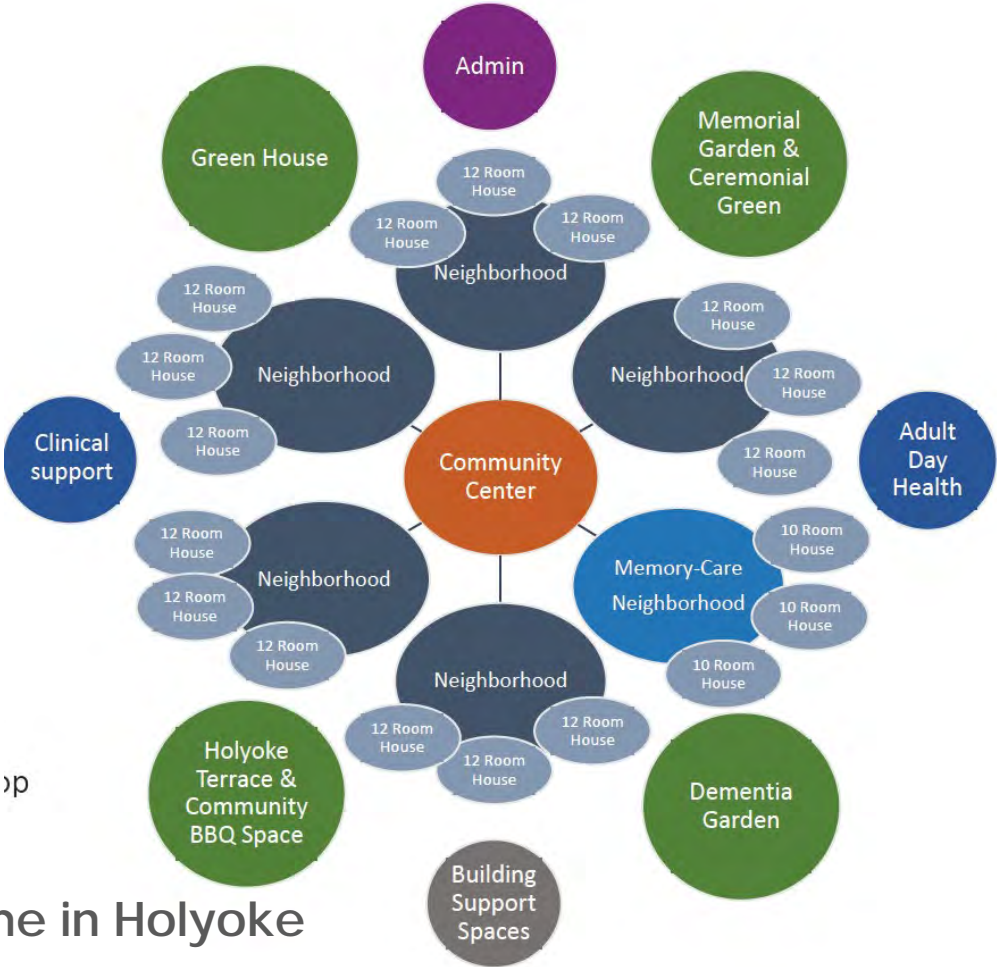


Existing Structure Demo & Site Work completion by Summer 2027

The “hybrid” model of Soldiers’ Home in Holyoke combines VA Small House Model with MA Dept of Public Health requirements for Long-Term Care Facilities



VA Small House Model



Soldiers' Home in Holyoke

Typical Resident Floor – Design Organization

Design Concept

The “hybrid” model of Soldiers’ Home in Holyoke combines VA Small House Model with MA Dept of Public Health requirements for Long-Term Care Facilities

212

Single Occupancy Bedrooms

11

Double Occupancy Bedrooms

234

Total Residents

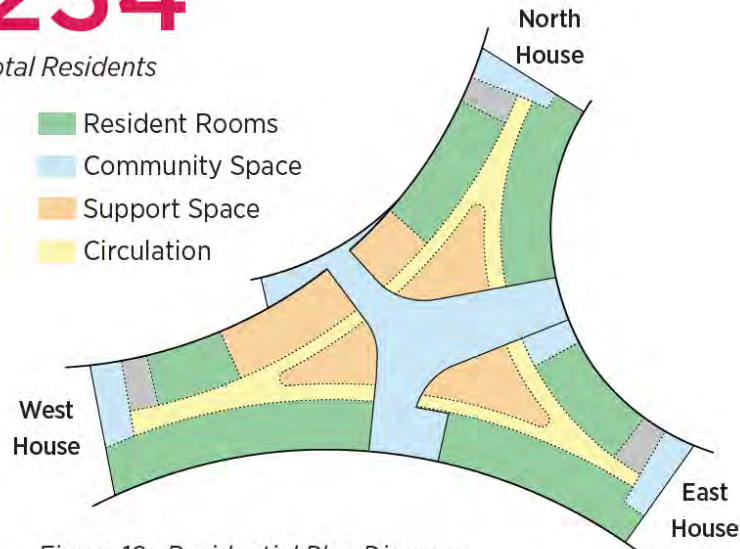
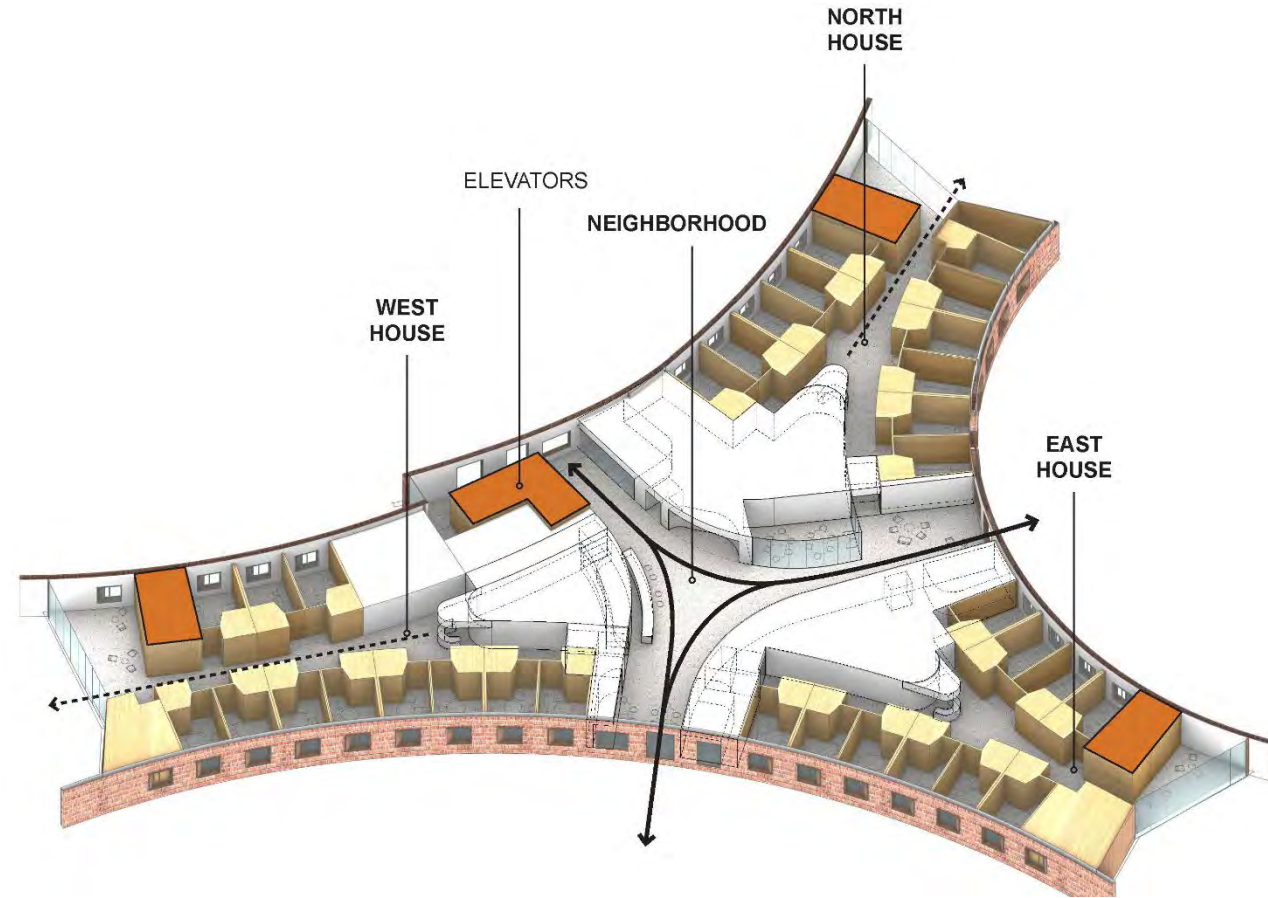


Figure 10: Residential Plan Diagram





BASEMENT LEVEL

- Receiving
- Kitchen, Linen
- Pharmacy
- Facilities support
- HVAC Utility Rooms



FIRST FLOOR

Admin Suite (grey)
Adult Day Health (purple)
Great Room, Holyoke Terrace
Chapel, Hair Salon, Retail (green)
Dental Suite
Dementia Garden, Green House



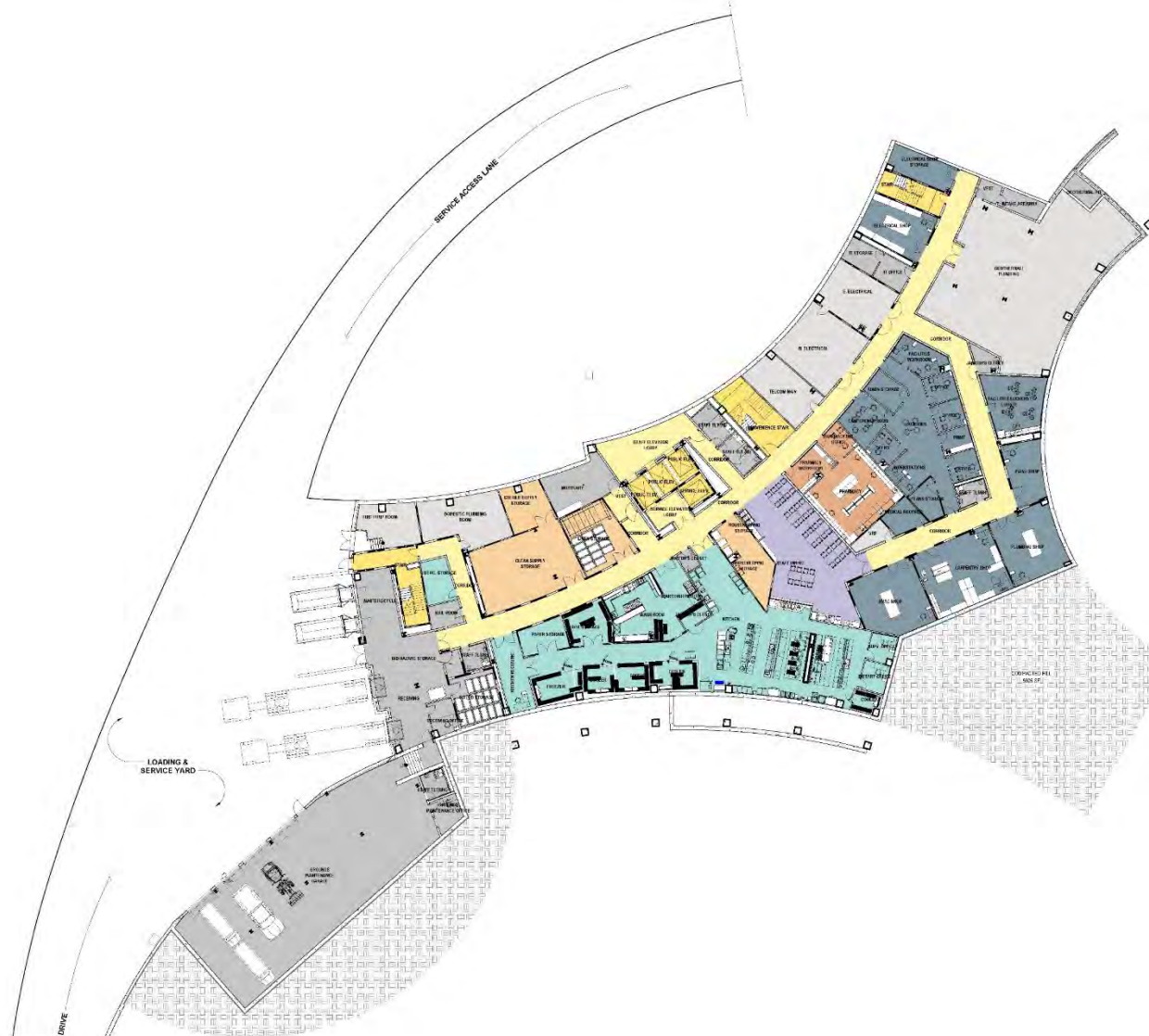
TYPICAL RESIDENT FLOOR

- 3 Houses
- 12 beds/House
- Community spaces (Dining, living, den)
- Nursing support

Lower Level Plan (Building Support)

Building Organization

Loading Dock
Staff Dining Room
Maintenance
Engineering
Pharmacy
Facilities
Materials
Management



Level 1 Plan

Building Organization



Main Lobby, Reception, Hobby Room



Great Room facing Holyoke Terrace and outdoor barbeque areas



Entry Vestibule facing Greenhouse

Level 1 Plan

Building Organization



Chapel



Holyoke Terrace; Exterior entry to Chapel



Level 2 - Memory Care Floor

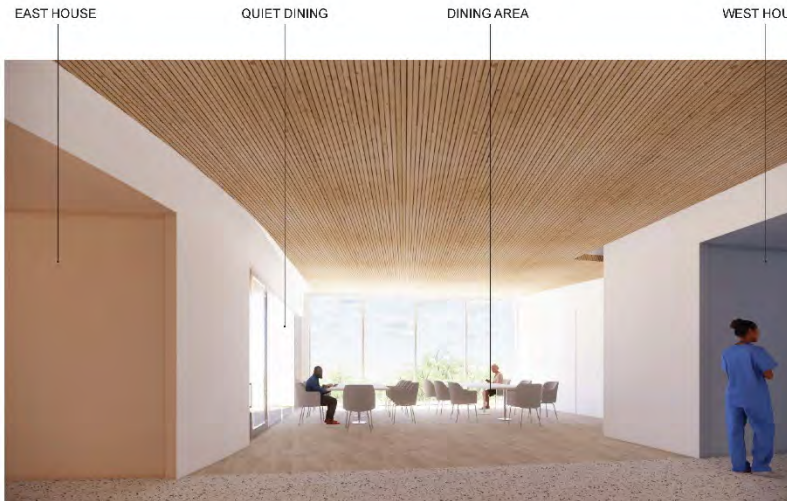
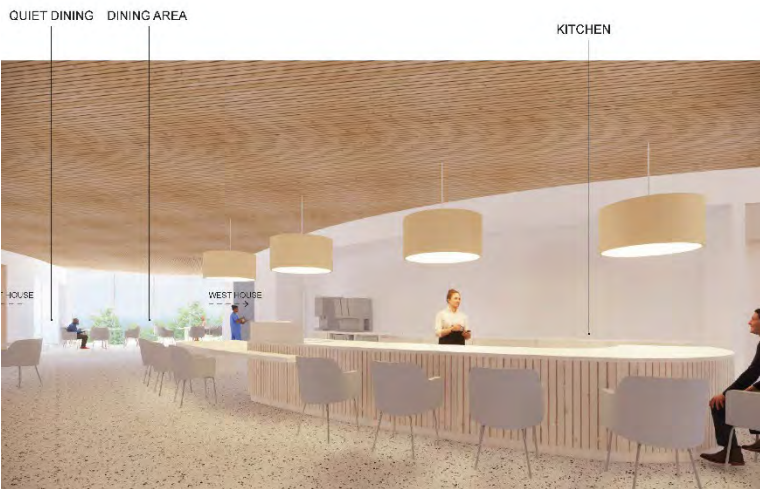
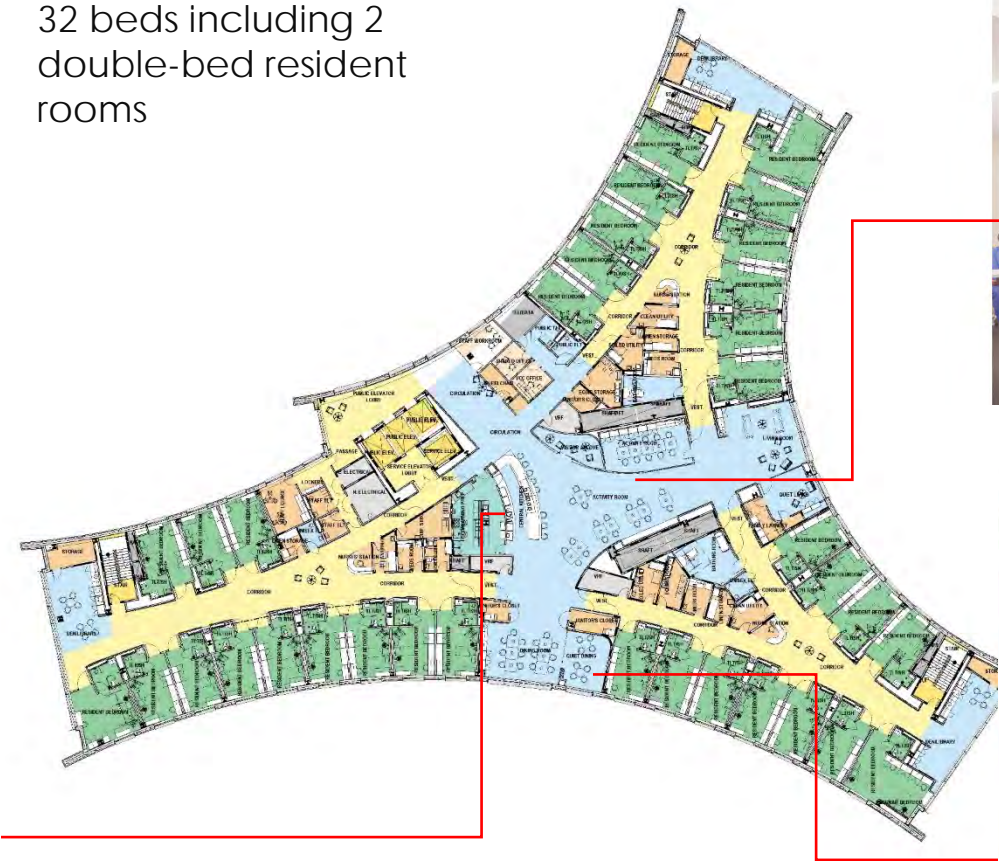
Building Organization



Typical Resident Floor Plan (Levels 3 – 7)

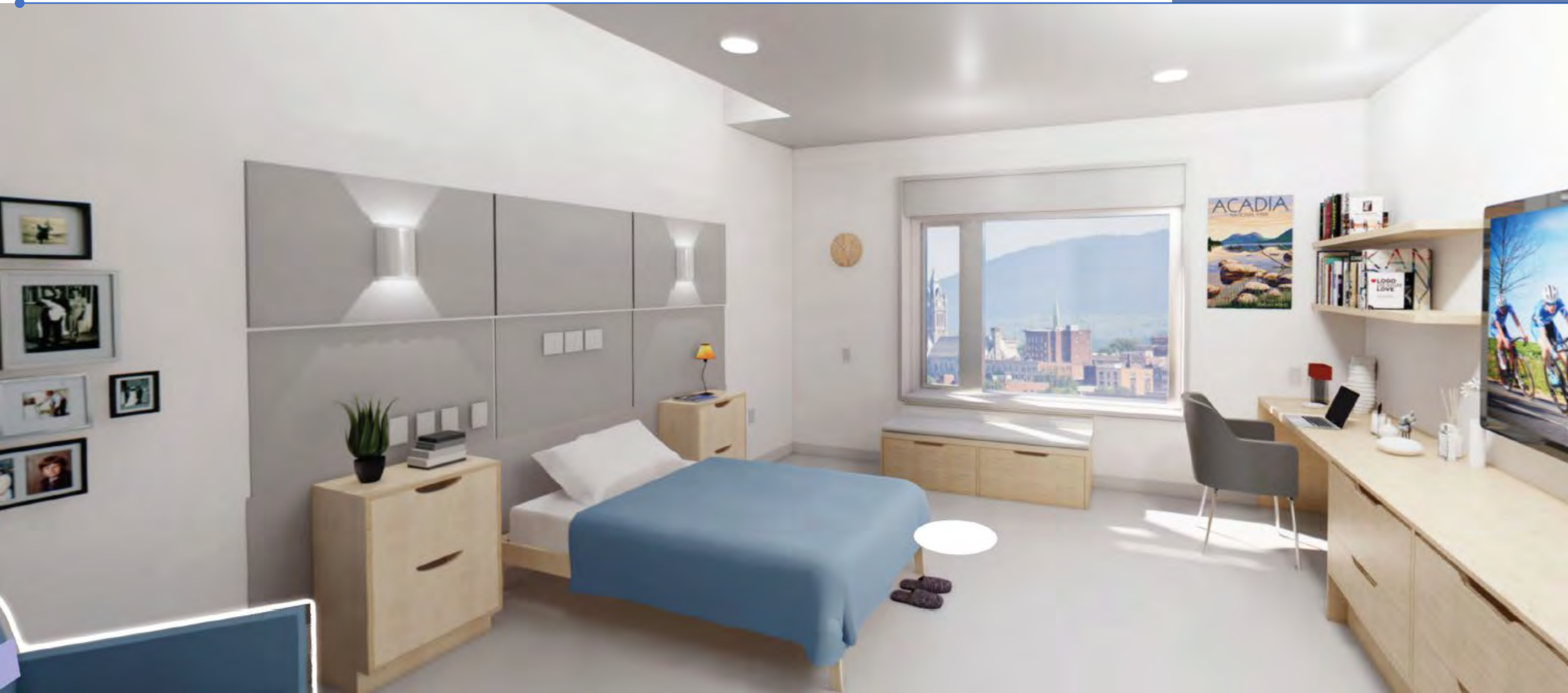


32 beds including 2 double-bed resident rooms

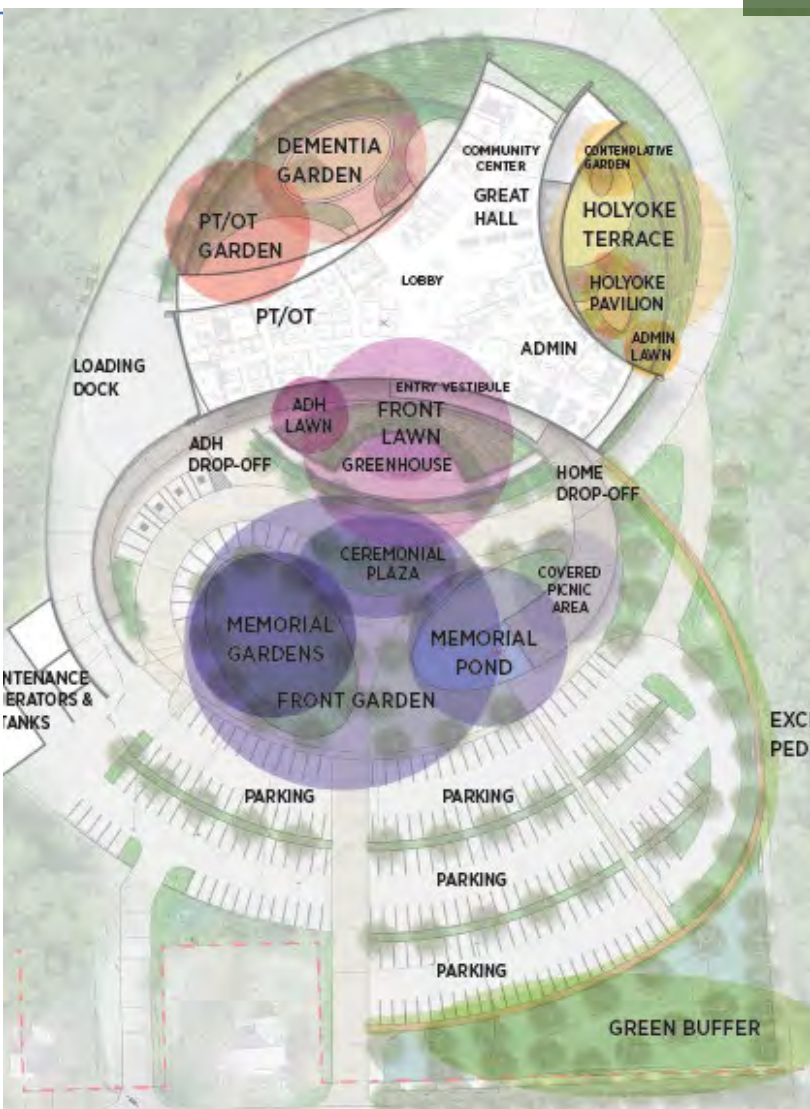


Typical Resident Room

Design Concepts



Landscape and Exterior Design



Integrated Landscape



Landscape Design - South Entry Area

Integrated Landscape

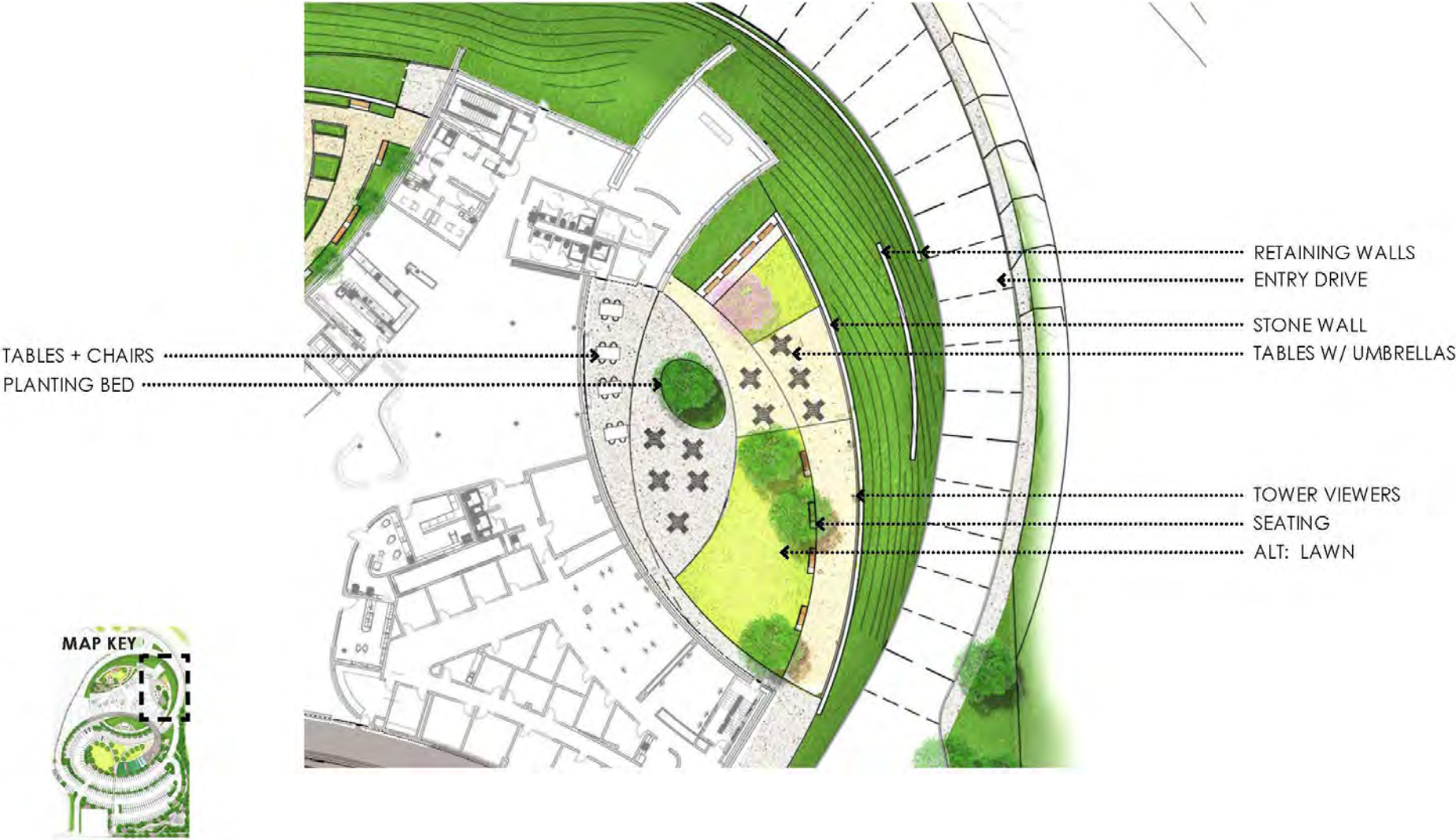


Landscape Design - South Entry Area

Integrated Landscape



Landscape Design – Holyoke Terrace (East)



Landscape Design – Holyoke Terrace (East)

Integrated Landscape





Landscape Design – Dementia Garden/PT-OT

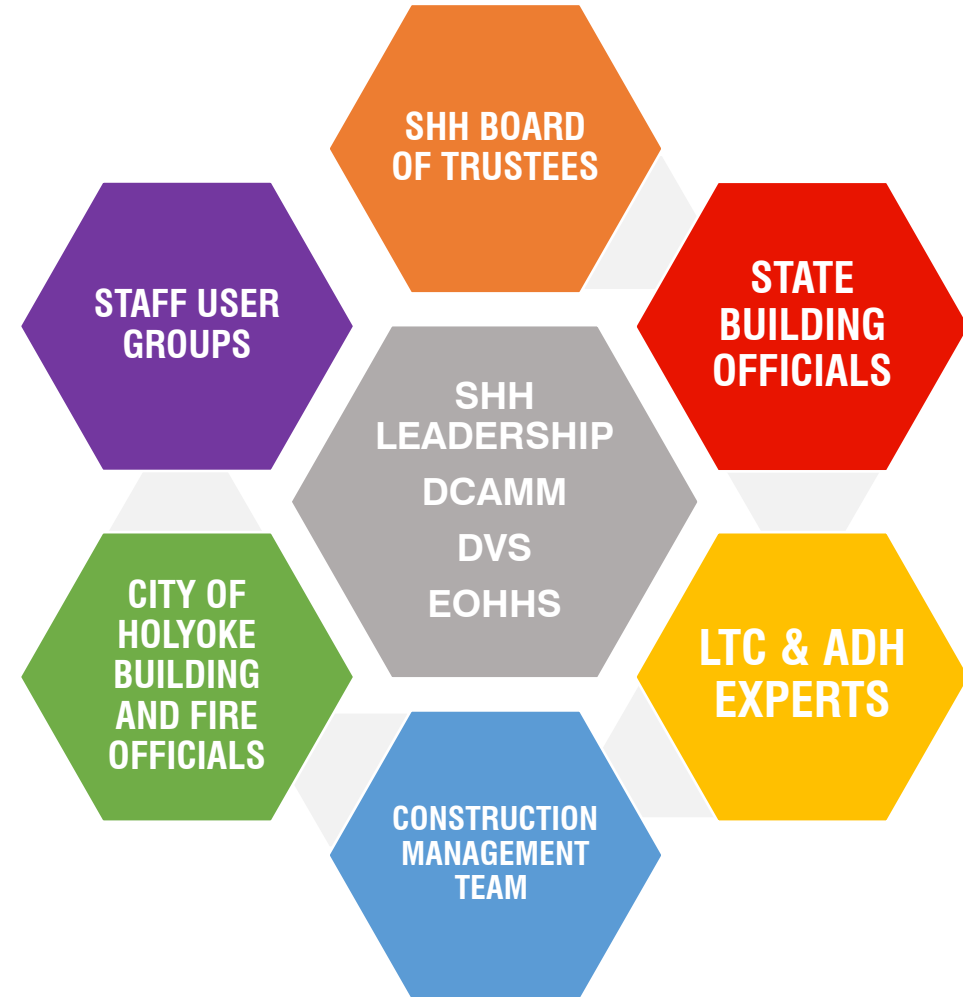
Integrated Landscape





A design developed through extensive stakeholder outreach

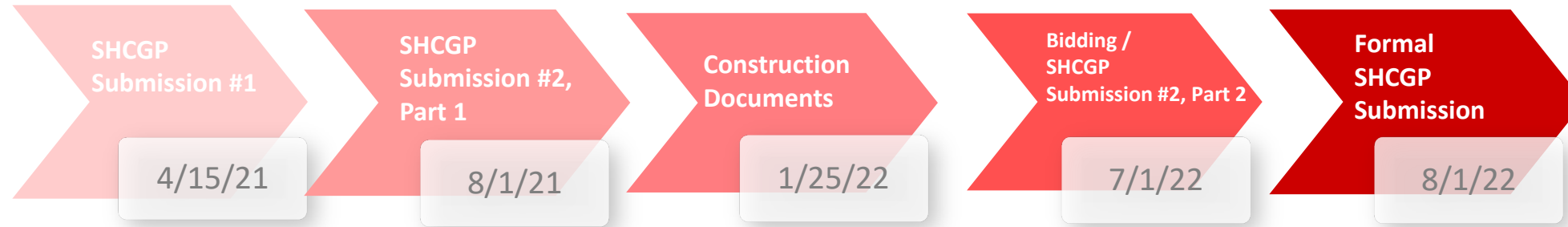
- Weekly working group meetings with SHH, DCAMM, DVS, EOHSS
- User Meetings with Soldiers' Home Staff & Leadership during SD and DD Phases with:
- Meetings with Holyoke Fire Department and City of Holyoke Building Department Representatives
- Meetings with State Building Inspector
- Workshops with Long-Term Care, Adult Day Health, and Accessibility/Universal Design Experts from:
 - Hebrew Senior Life
 - Long Island Stony Brooke
 - MIT AgeLab
 - Institute for Human Centered Design



Next Steps and Road Ahead

Project Next Steps

VA - Small Home Construction Grant Application (SHCGP) Schedule



Project Overall Schedule



Questions & Comments

