



I-90 ALLSTON INTERMODAL PROJECT

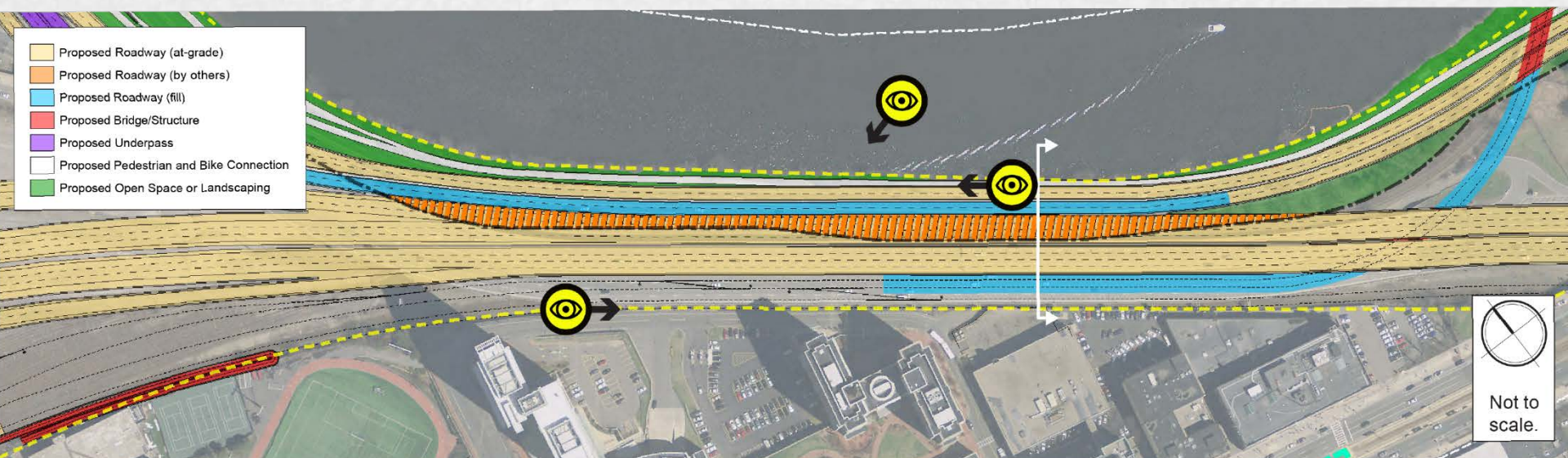
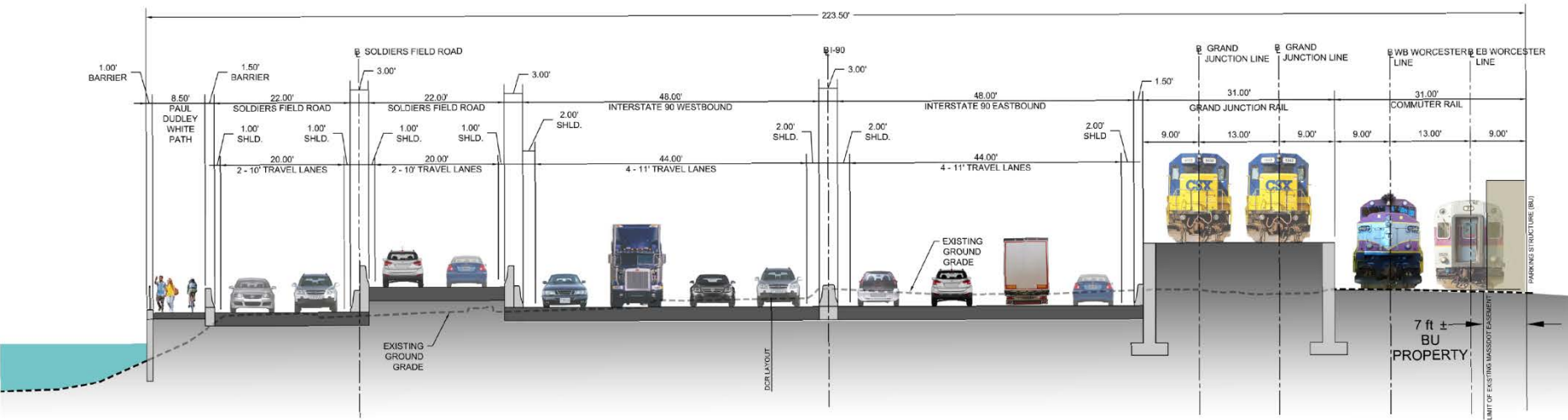
Additional Materials on Alternatives
Joint Board Meeting

October 15, 2018

CROSS SECTIONS AND CONCEPTUAL RENDERINGS

At-grade Family of Alternatives

DEIR At-Grade Alternative



DEIR At-Grade Alternative

Looking northeast from Buick Street



DEIR At-Grade Alternative

Looking west from the Paul Dudley White Path

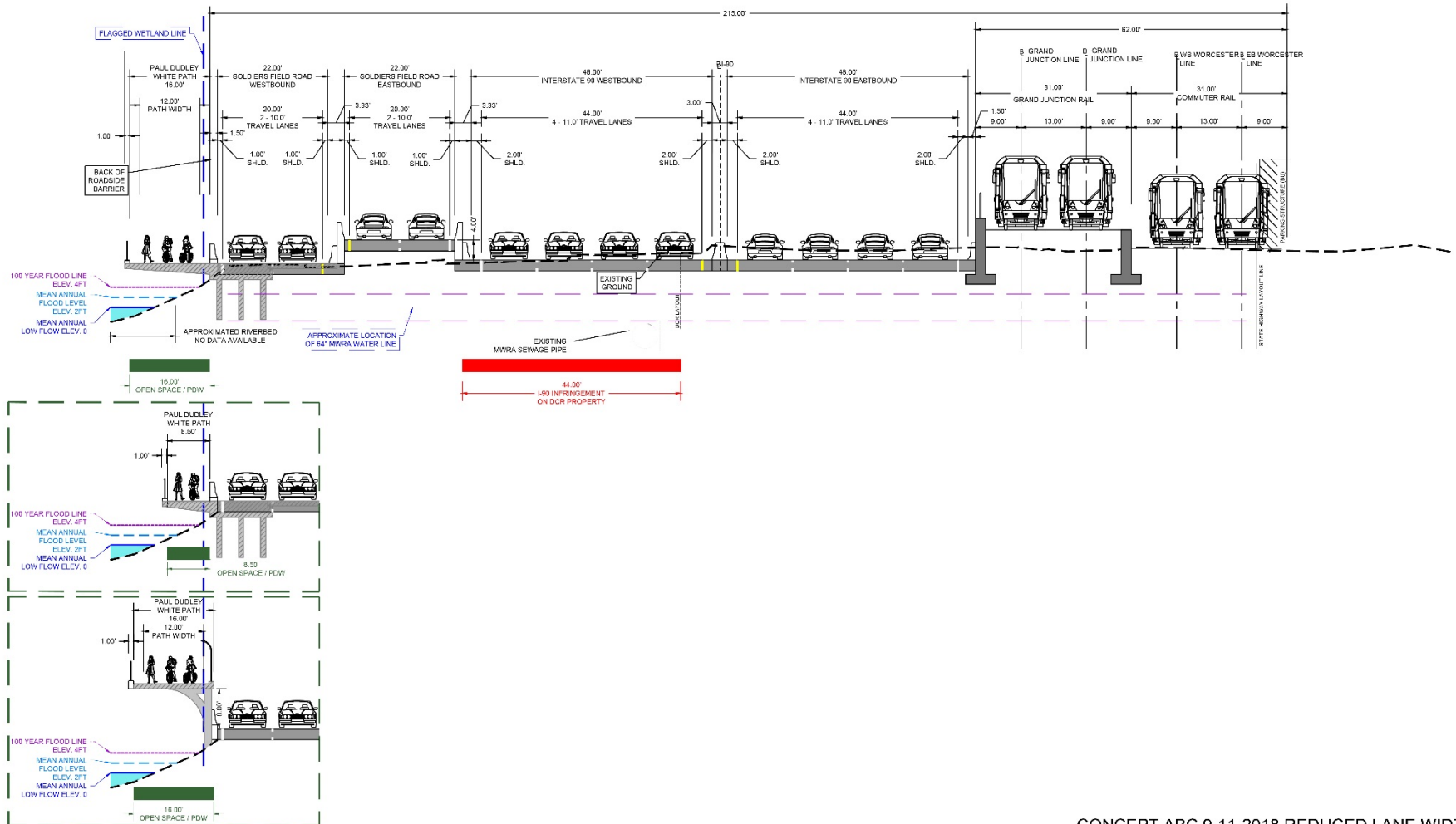


DEIR At-Grade Alternative

Looking south from Magazine Beach Park, Cambridge

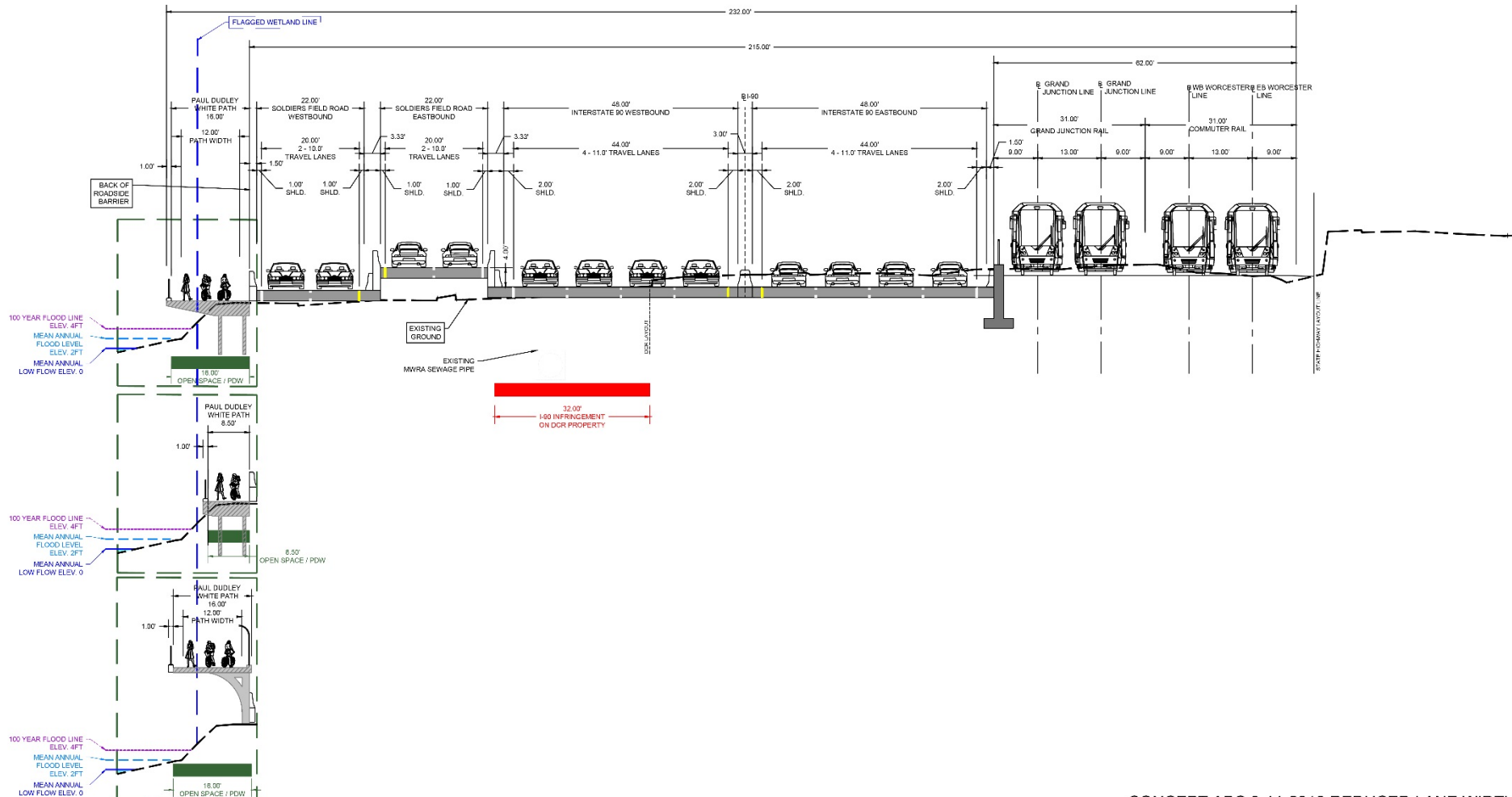


IRT At-Grade Variant Narrowest Cross Section



CONCEPT ABC 9-11-2018 REDUCED LANE WIDTH
SECTION AT NARROWEST POINT ALONG CHARLES RIVER

IRT At-Grade Variant Western Cross Section



IRT At-Grade Variant

Looking northeast from Buick Street



IRT At-Grade Variant

Looking west from the Paul Dudley White Path



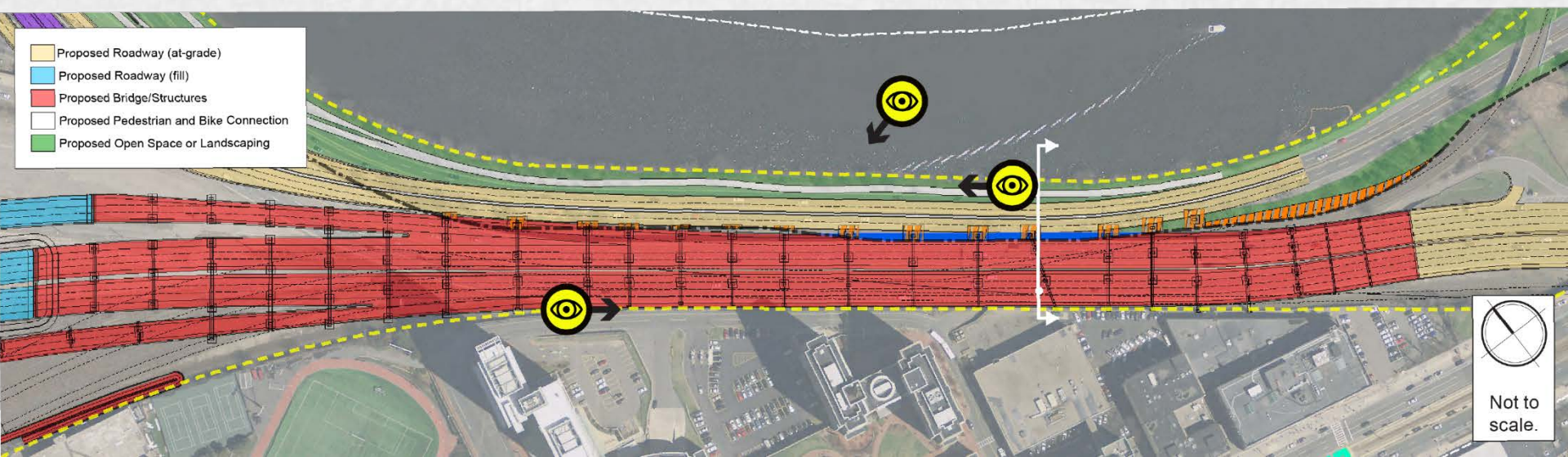
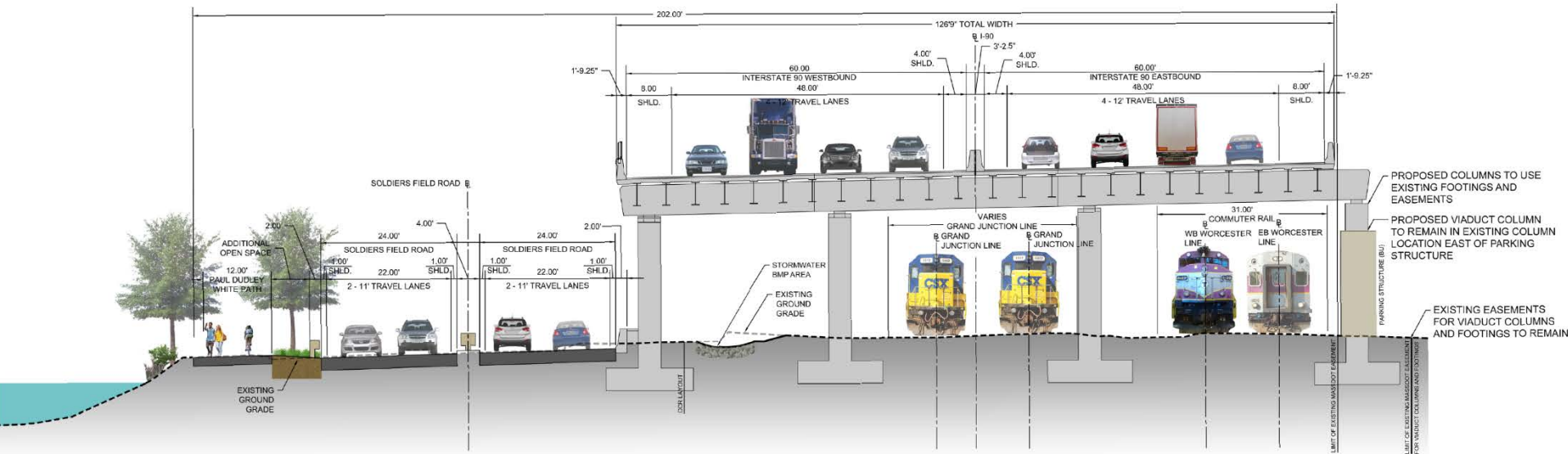
IRT At-Grade Variant

Looking south from Magazine Beach Park, Cambridge



Highway Viaduct Family of Alternatives

DEIR Highway Viaduct Alternative



DEIR Highway Viaduct Alternative

Looking northeast from Buick Street



DEIR Highway Viaduct Alternative

Looking west from the Paul Dudley White Path



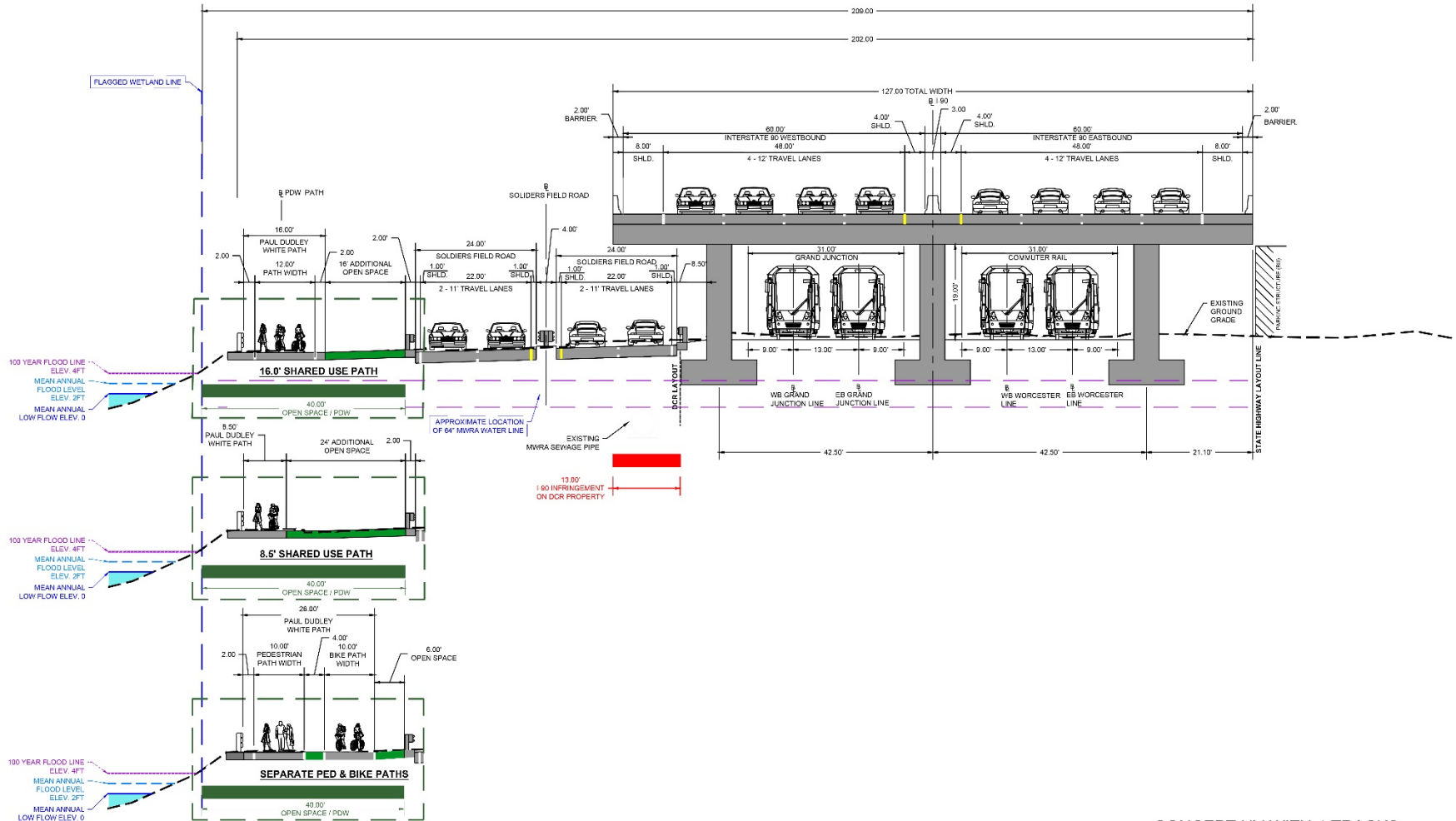
DEIR Highway Viaduct Alternative

Looking south from Magazine Beach Park, Cambridge



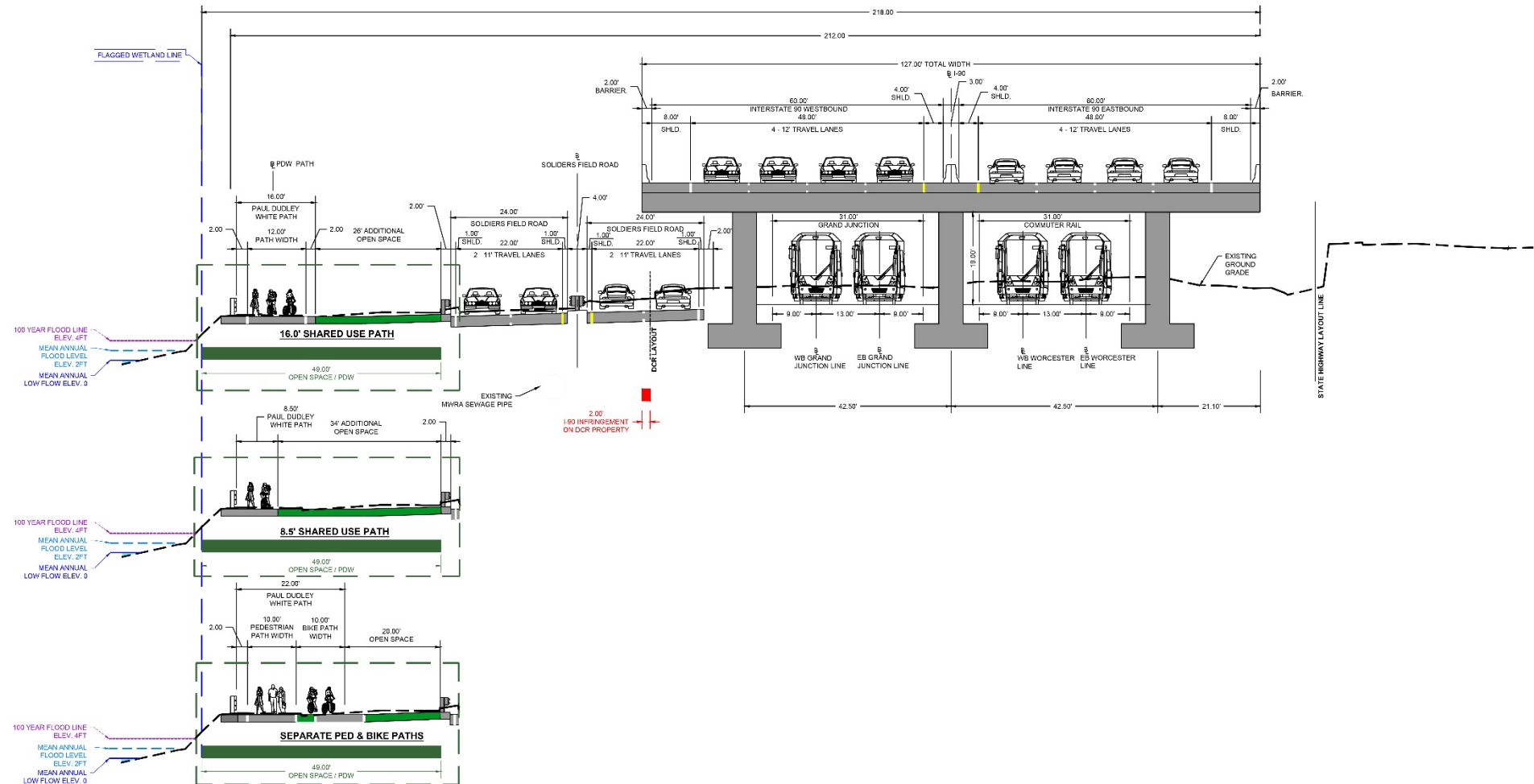
IRT Highway Viaduct Variant

Narrowest Cross Section



IRT Highway Viaduct Variant

Western Cross Section



CONCEPT HV WITH 4 TRACKS
WESTERN SECTION ALONG CHARLES RIVER

IRT Highway Viaduct Variant

Looking northeast from Buick Street



IRT Highway Viaduct Variant

Looking west from the Paul Dudley White Path



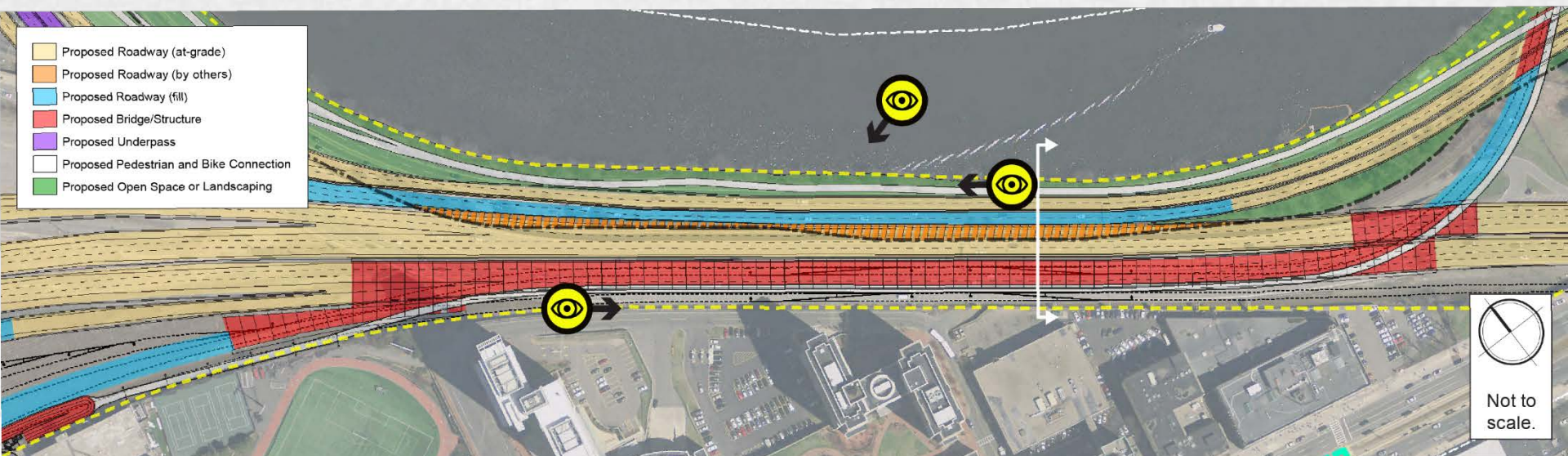
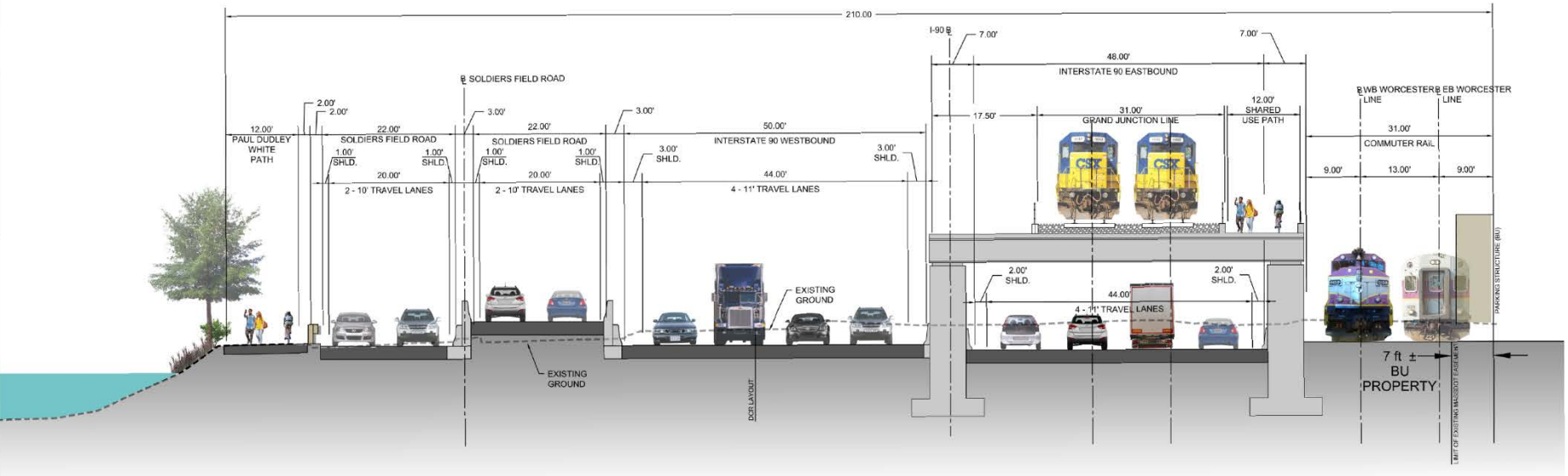
IRT Highway Viaduct Variant

Looking south from Magazine Beach Park, Cambridge



Hybrid Family of Alternatives

DEIR Hybrid Alternative



DEIR Hybrid Alternative

Looking northeast from Buick Street



DEIR Hybrid Alternative

Looking west on the Paul Dudley White Path



DEIR Hybrid Alternative

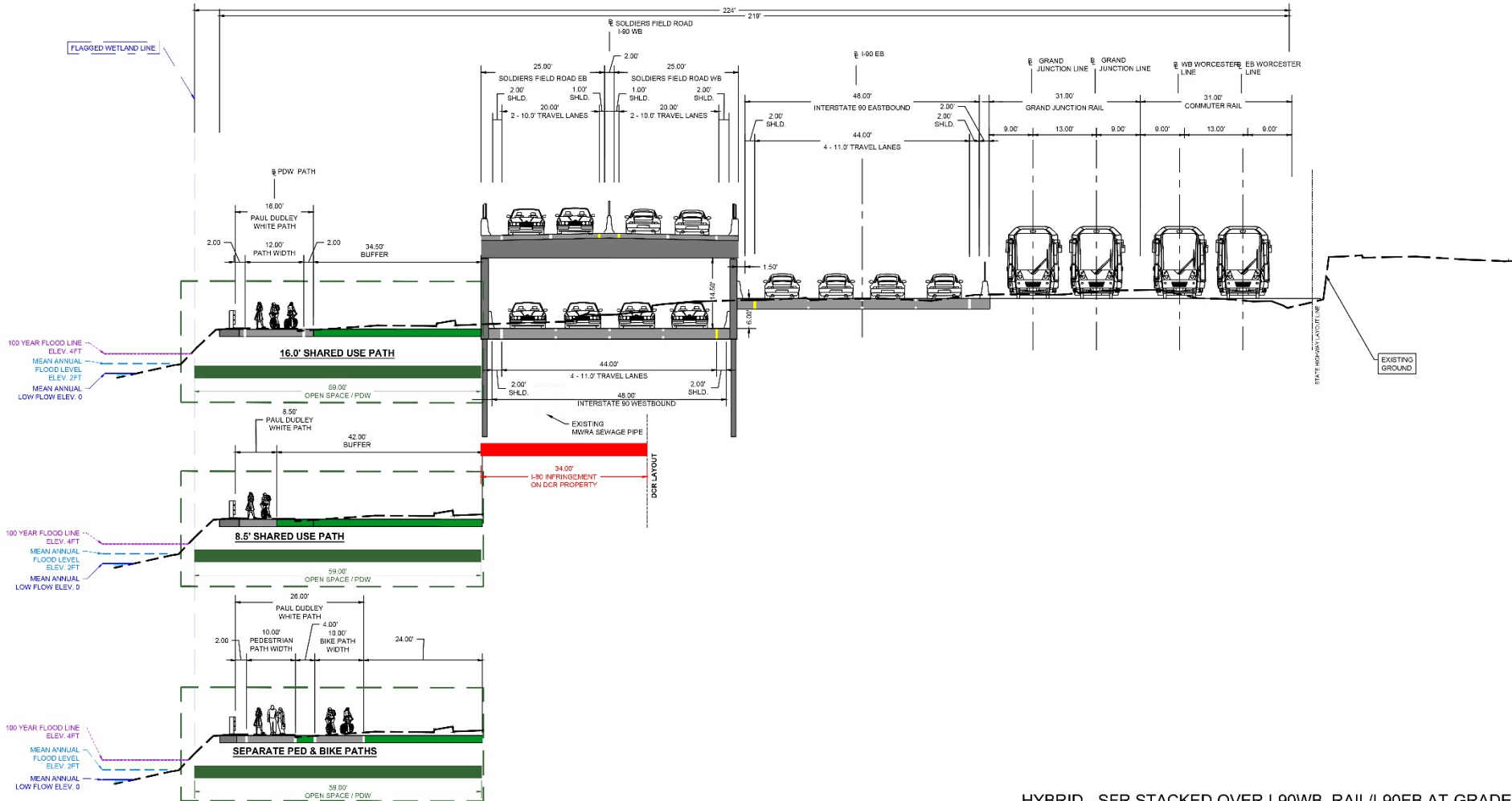
Looking south from Magazine Beach Park, Cambridge





IRT Hybrid Variant

Western Cross Section



**HYBRID - SFR STACKED OVER I-90WB, RAIL/I-90EB AT-GRADE
WESTERN SECTION ALONG THE CHARLES RIVER**

IRT Hybrid Variant

Looking northeast from Buick Street



IRT Hybrid Variant

Looking west from the Paul Dudley White Path



IRT Hybrid Variant

Looking south from Magazine Beach Park, Cambridge

