



MASSACHUSETTS DEPARTMENT OF
CONSERVATION AND RECREATION

Hammond Pond Parkway Reconstruction

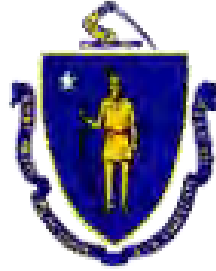
25% Public Meeting





Meeting Logistics

- Two ways to ask questions during the meeting
 - Raise your hand
 - Use Q&A feature
- You will have the opportunity to submit comments over the course of the next four weeks at:
 - DCR Public Comments
<https://www.mass.gov/forms/dcr-public-comments>
- *Please note that this meeting will be recorded; the recording will be a public record*



Commonwealth of Massachusetts

Governor

Charles D. Baker

Lieutenant Governor

Karyn E. Polito

Energy and Environmental Secretary

Kathleen A. Theoharides

Department of Conservation and Recreation Commissioner

Jim Montgomery

Project Team

Department of Conservation and Recreation

Project Proponent – Responsible for design process & construction funding



City of Newton

Project Stakeholder – Responsible for coordination with public outreach



BSC Group

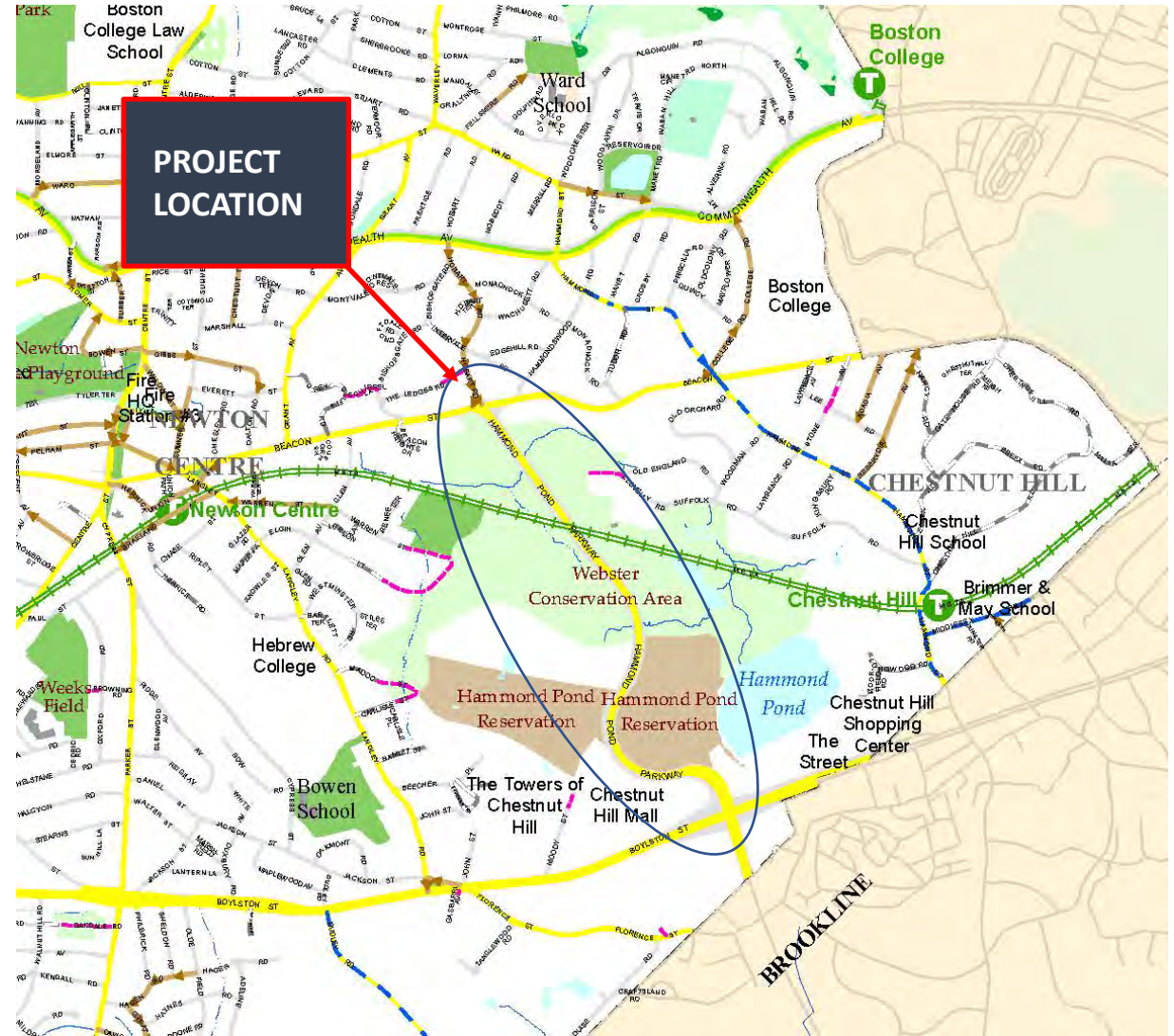
Design Consultant – Roadway design, landscape architecture and permitting





MASSACHUSETTS DEPARTMENT OF
CONSERVATION AND RECREATION

Project Location





MASSACHUSETTS DEPARTMENT OF
CONSERVATION AND RECREATION

Existing Parkway

- Existing roadway was built in 1934
- The roadway consists of two lanes in each direction.
- Overall length is approximately one mile
- Roadway crosses over D Branch of the MBTA's Green Line on a single span bridge
- Three signalized intersections within project limits
- Coordination with MassDOT required for modifications to bridge and minor improvements at Route 9
- Limited sidewalks and bicycle accommodation



Project Goals



- Redesign Hammond Pond Parkway as a “complete street” gem in the DCR parkway system
- Provide safe bicycle and pedestrian accommodation along parkway via a twelve-foot wide shared use path
- Provide two travel lanes from Beacon Street to The Shoppes at Chestnut Hill driveway.
- Maintain existing travel lane configuration from The Shoppes at Chestnut Hill driveway to Route 9
- Provide improved access to adjacent conservation areas
- Construct landscaped buffer between roadway and shared use path with extensive plantings

Similar Success Stories – Greenough Boulevard



Before



After

Similar Success Stories – Nonantum Road



Before



After

Similar Success Stories – Truman Parkway



Before



After



Getting to Today

- **2019**

- Notice to Proceed with design
- Survey
- Traffic Counts
- City of Newton Coordination Meetings (2)
- Traffic Report

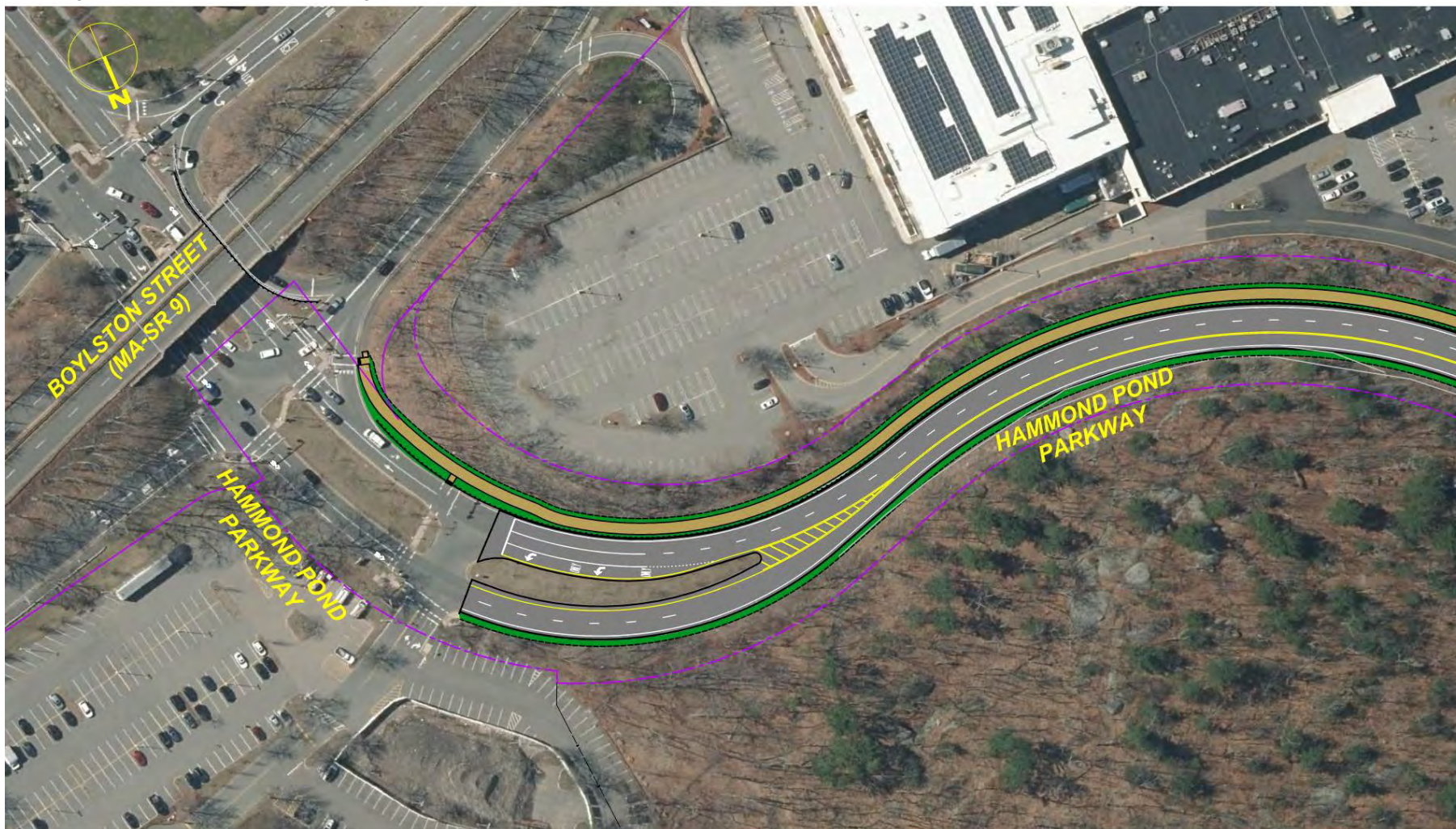
- **2020**

- Lighting coordination meeting with utility company
- 25% design plans and estimate completed

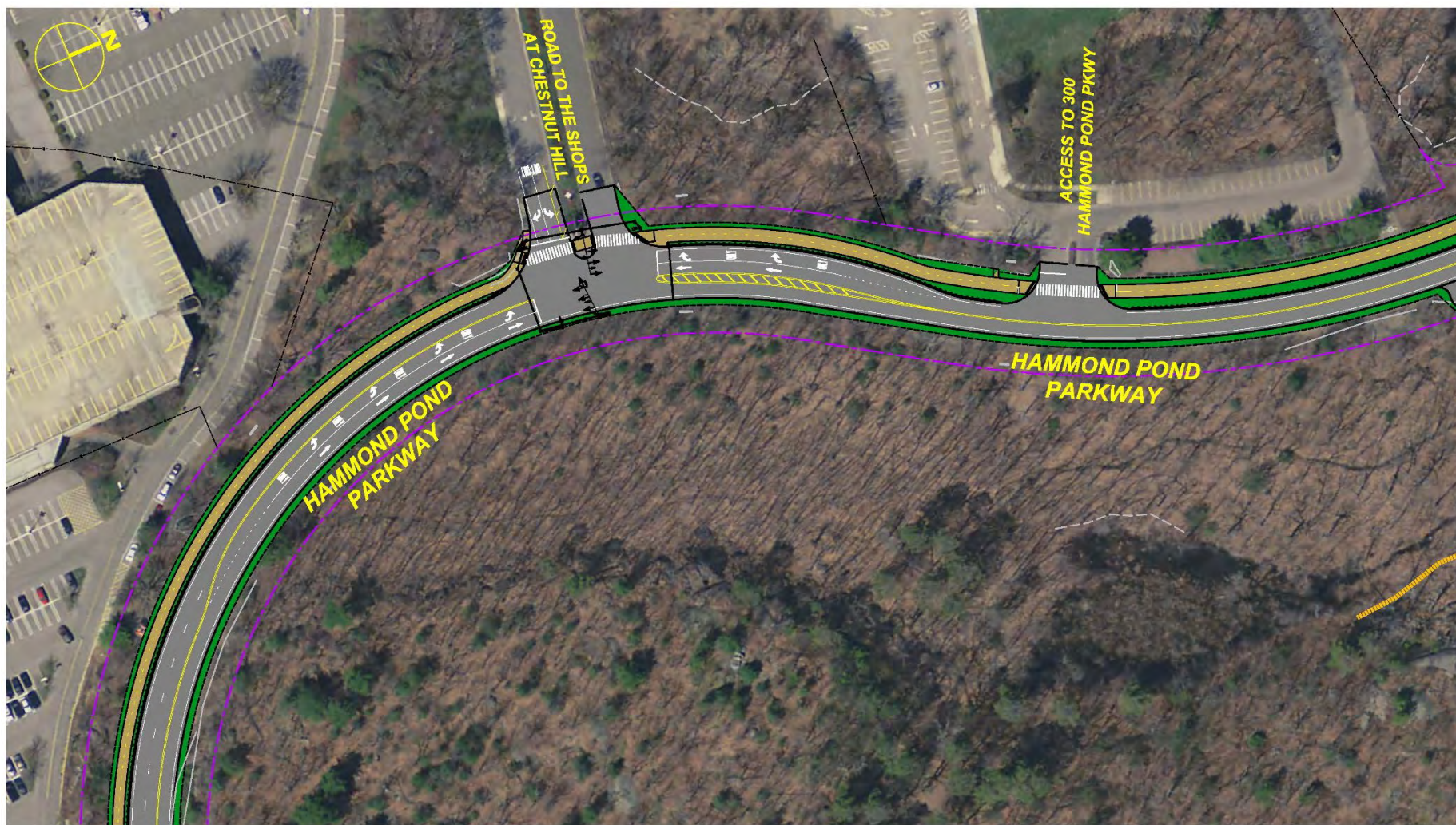
- **2021**

- **25% Public Meeting**

Proposed Improvements – 1 of 5, south to north



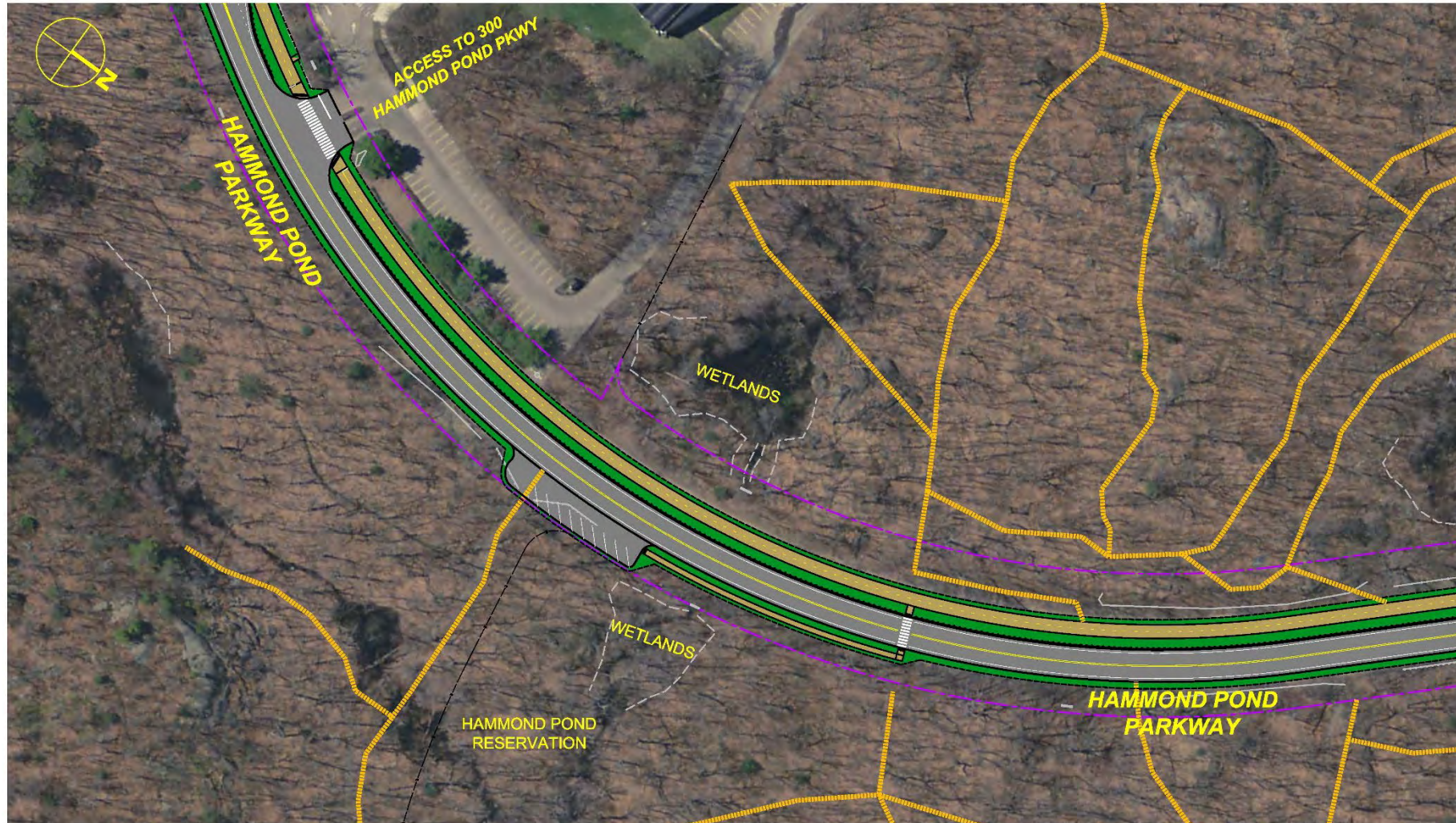
Proposed Improvements – 2 of 5, south to north





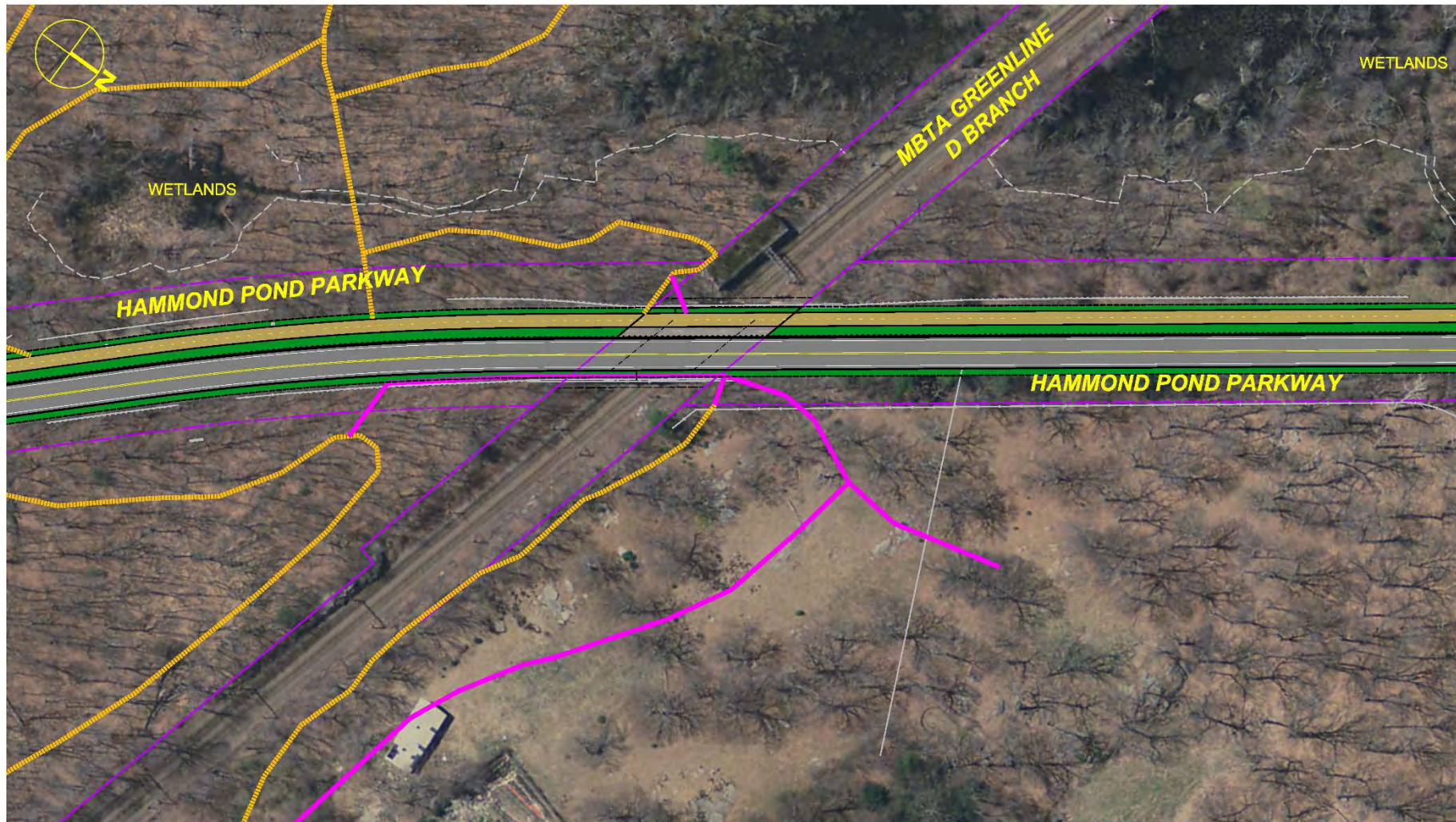
MASSACHUSETTS DEPARTMENT OF
CONSERVATION AND RECREATION

Proposed Improvements – 3 of 5, south to north





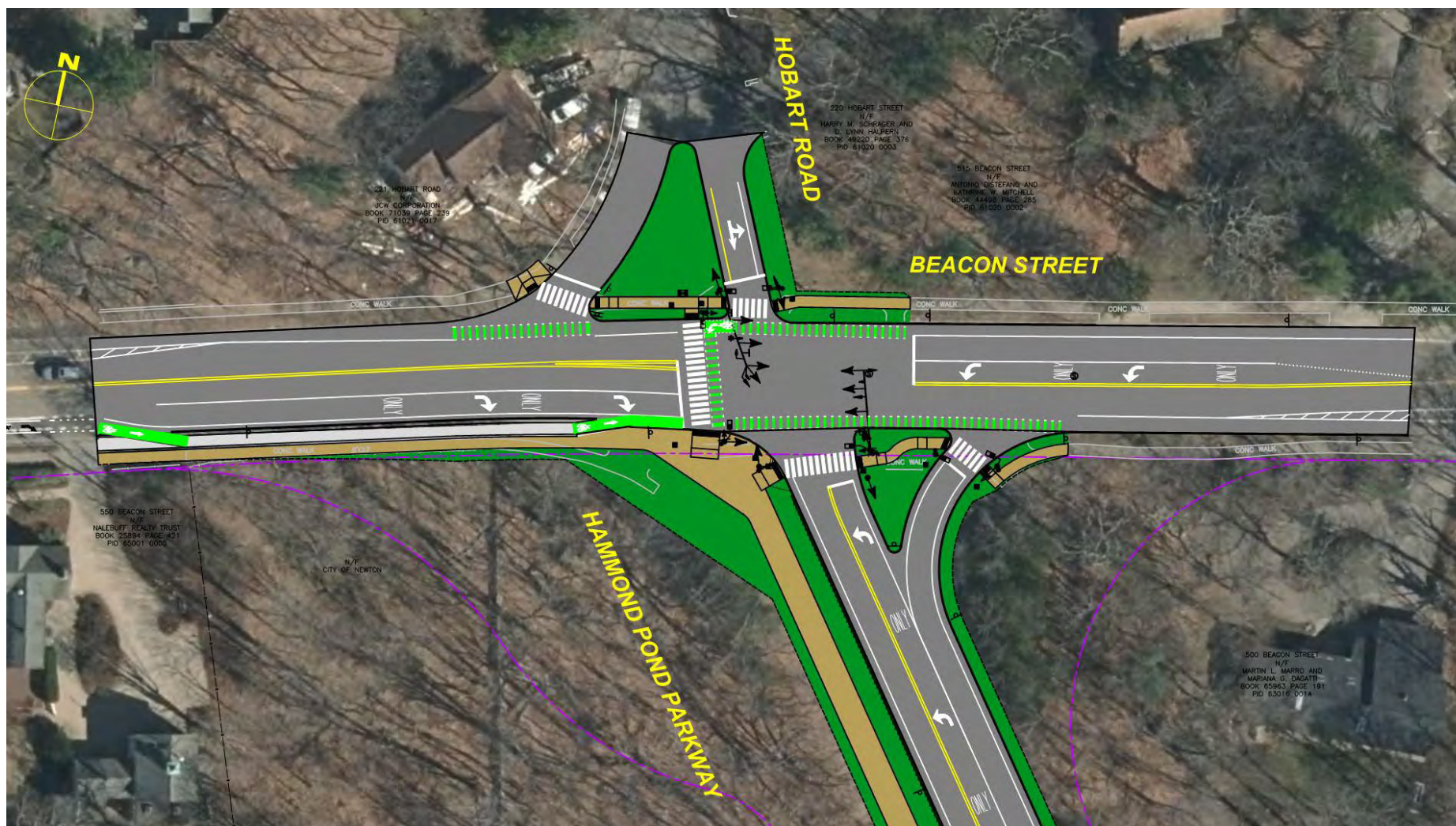
Proposed Improvements – 4 of 5, south to north



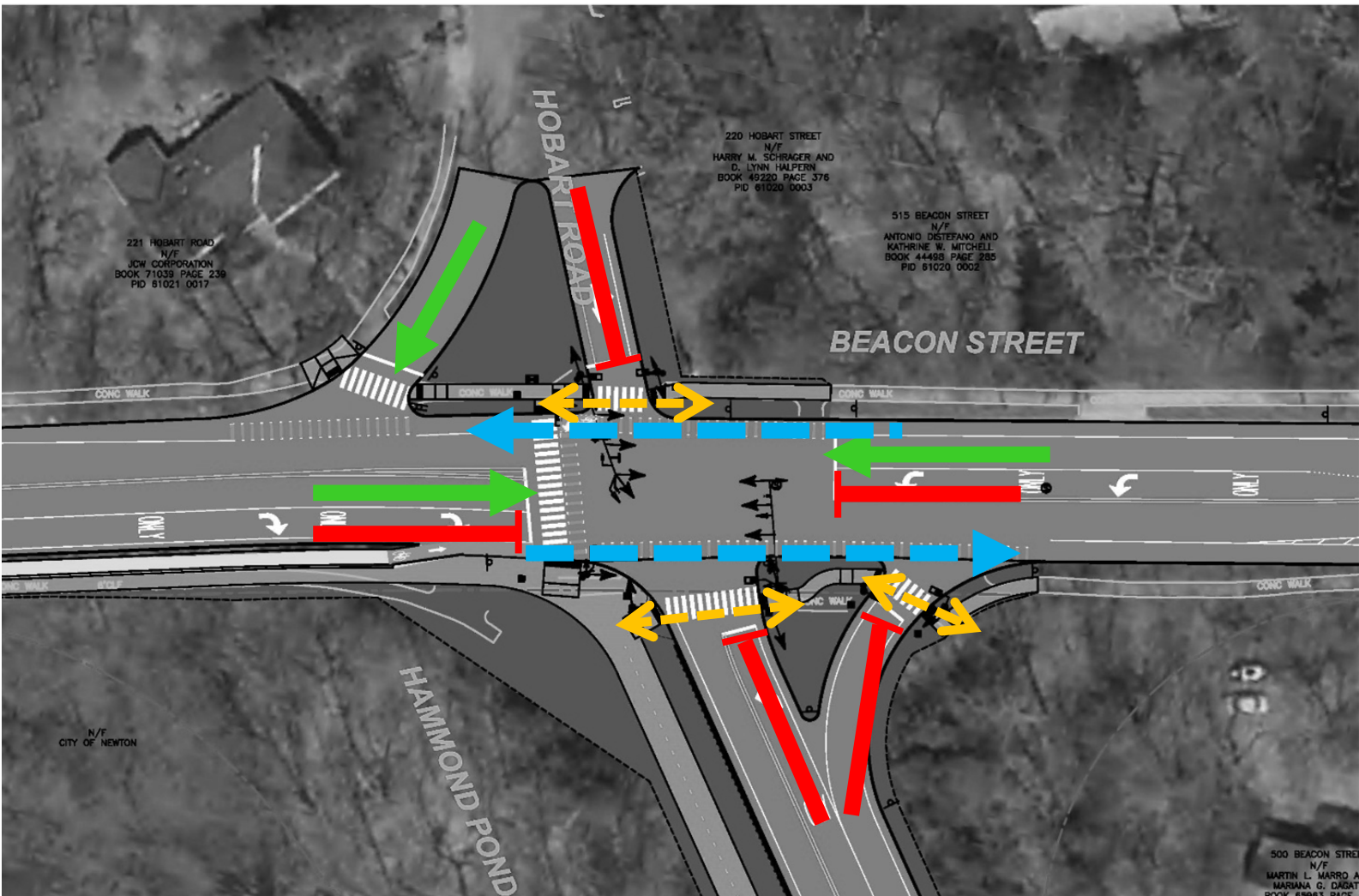
Proposed Improvements – 5 of 5, south to north







Beacon Street at Hammond Pond Parkway



Traffic Signal Phasing – Sequence 1

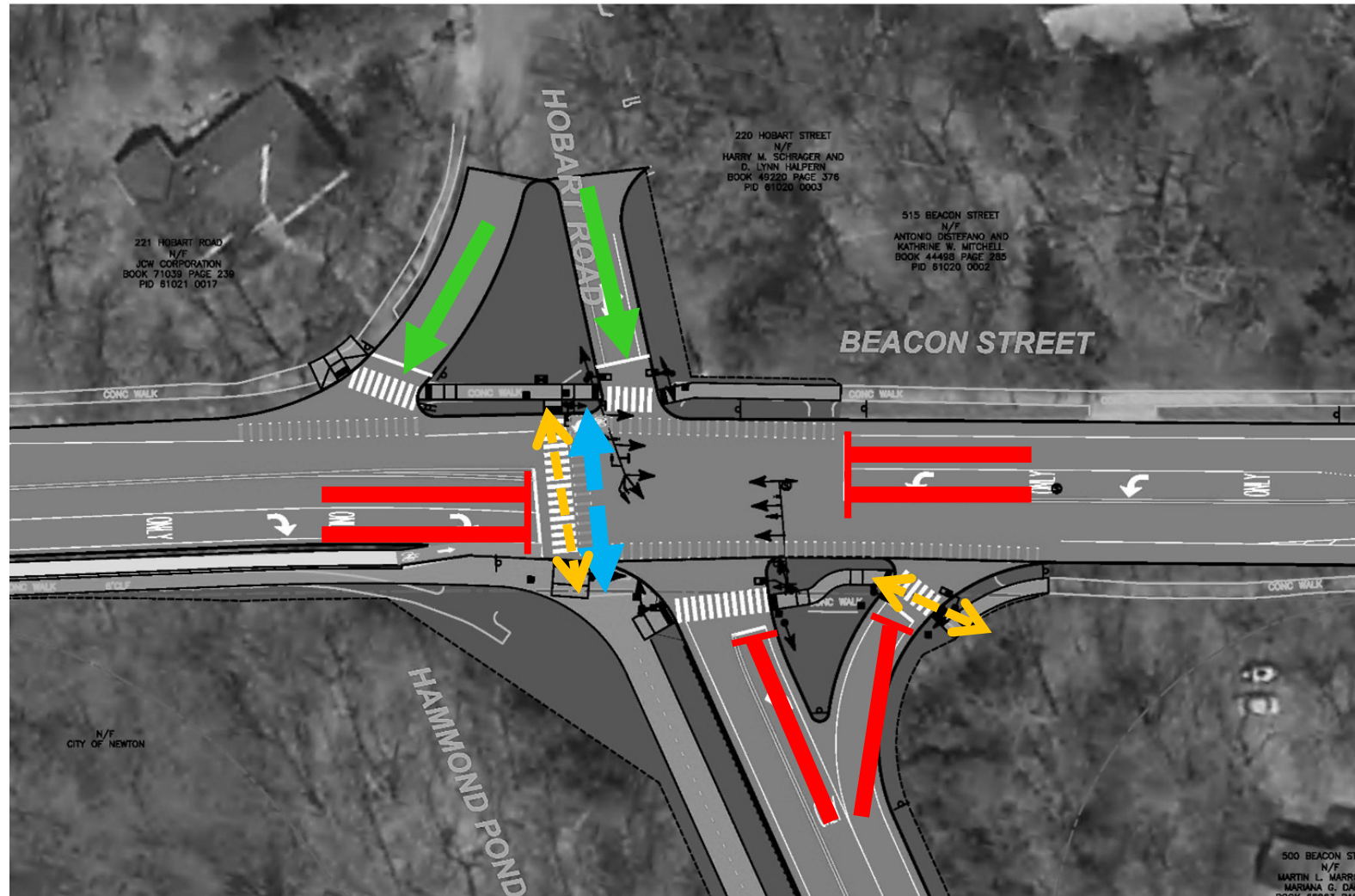


LEGEND





-
-  Vehicular Phase
 Vehicle Stopped
 Pedestrian Phase
 Bicycle Phase



Traffic Signal Phasing – Sequence 2

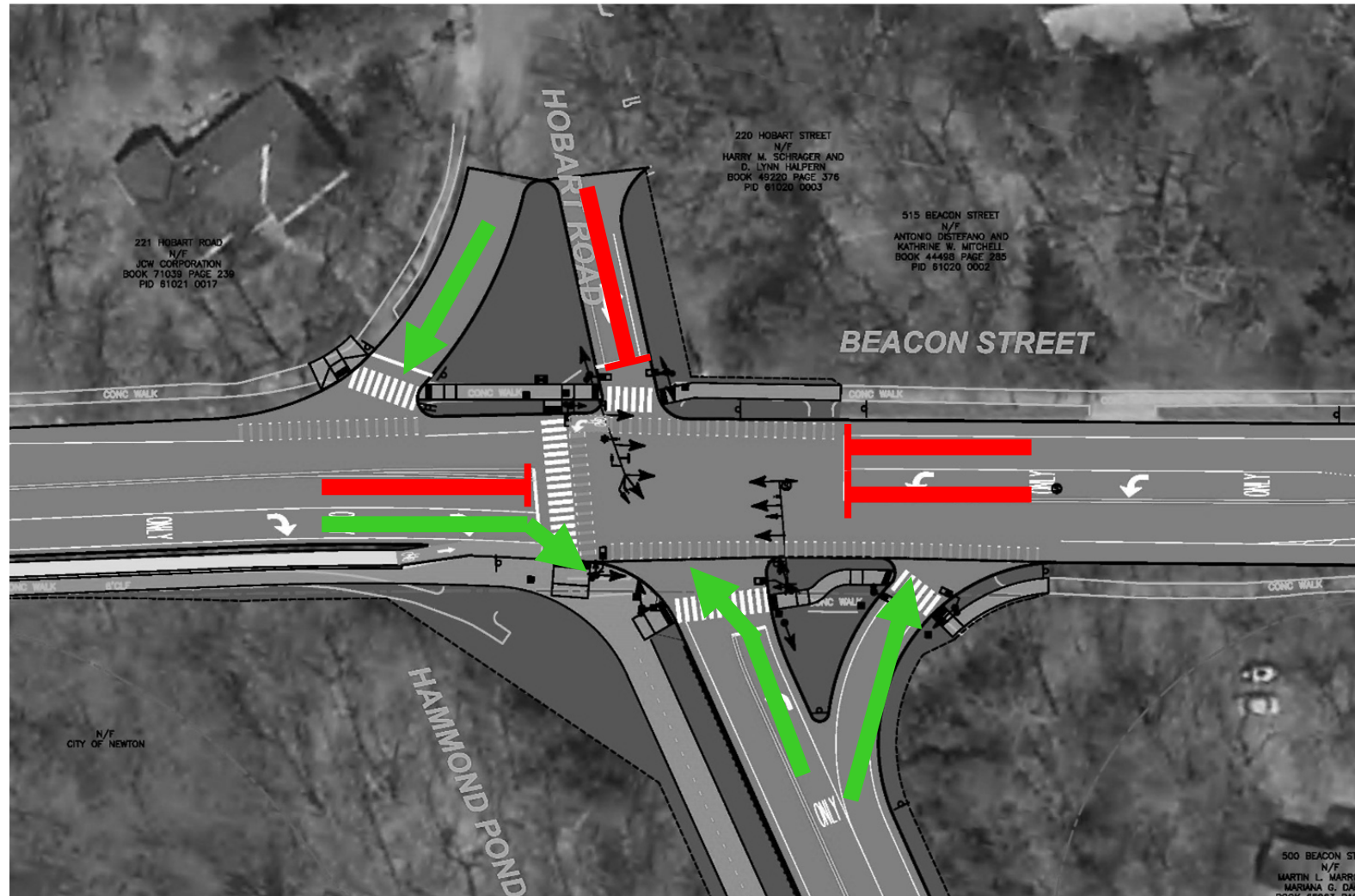


LEGEND





-  Vehicular Phase
-  Vehicle Stopped
-  Pedestrian Phase
-  Bicycle Phase



Traffic Signal Phasing – Sequence 3

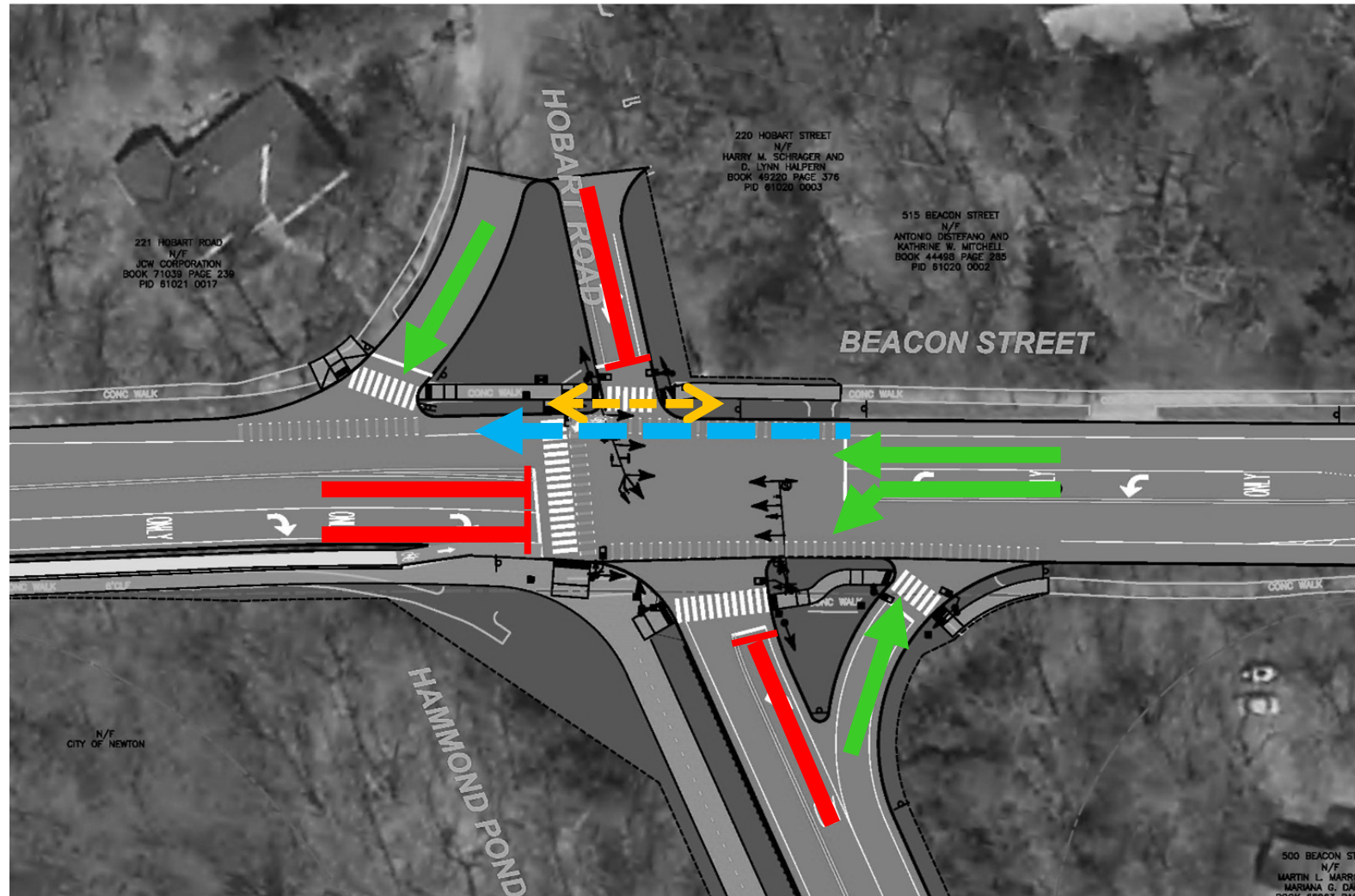


LEGEND





-  Vehicular Phase
-  Vehicle Stopped
-  Pedestrian Phase
-  Bicycle Phase



Traffic Signal Phasing – Sequence 4



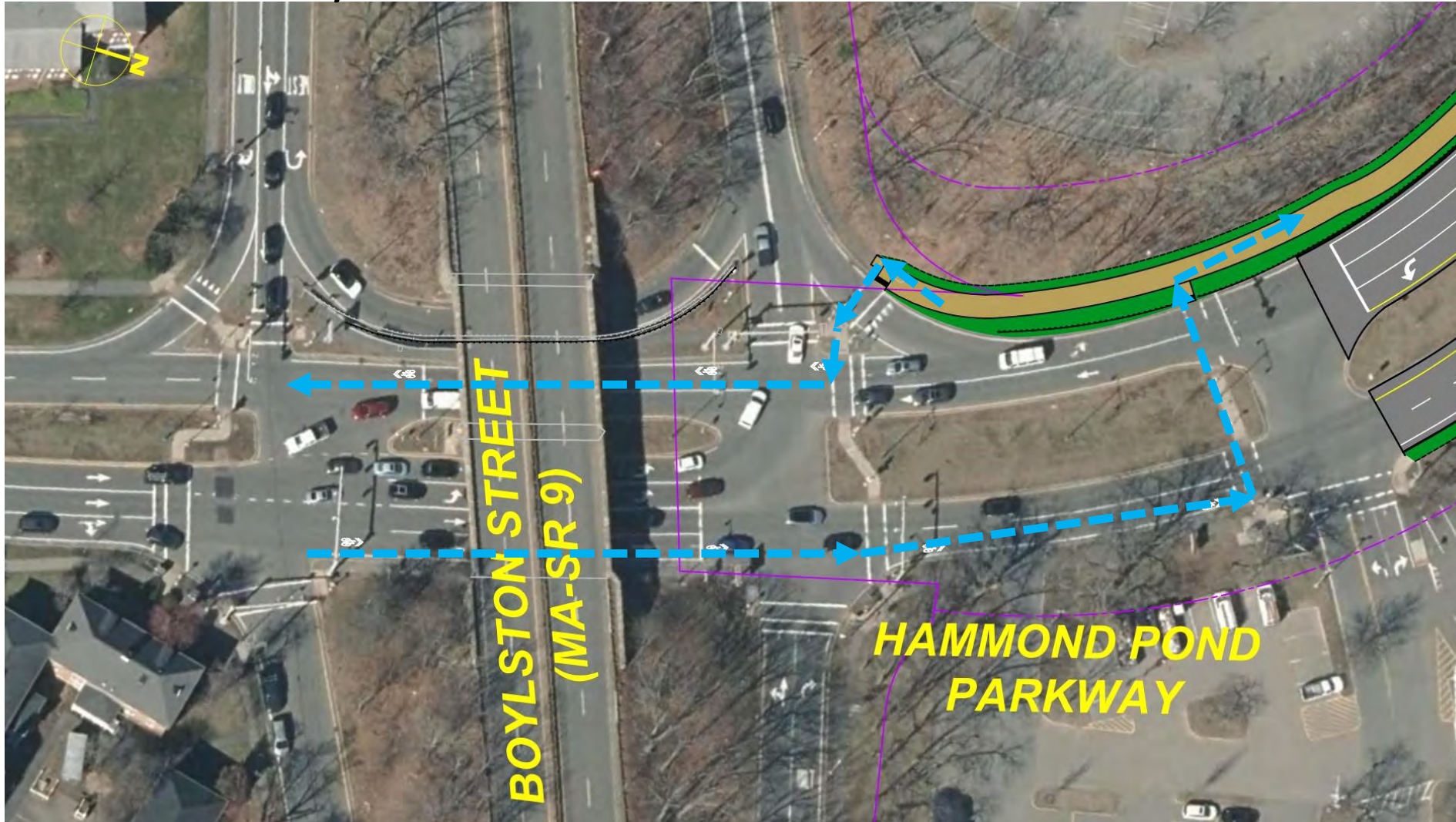
LEGEND

-  Vehicular Phase
-  Vehicle Stopped
-  Pedestrian Phase
-  Bicycle Phase



MASSACHUSETTS DEPARTMENT OF
CONSERVATION AND RECREATION

Bicycle Connection – Hammond Pond Parkway South



LEGEND



Hammond Pond Parkway – Proposed Section View



Typical View of Shared Use Path and Parkway



View of 300 Hammond Pond Parkway Driveway



Before



After

View to the north from 300 Hammond Pond Parkway



Before



After



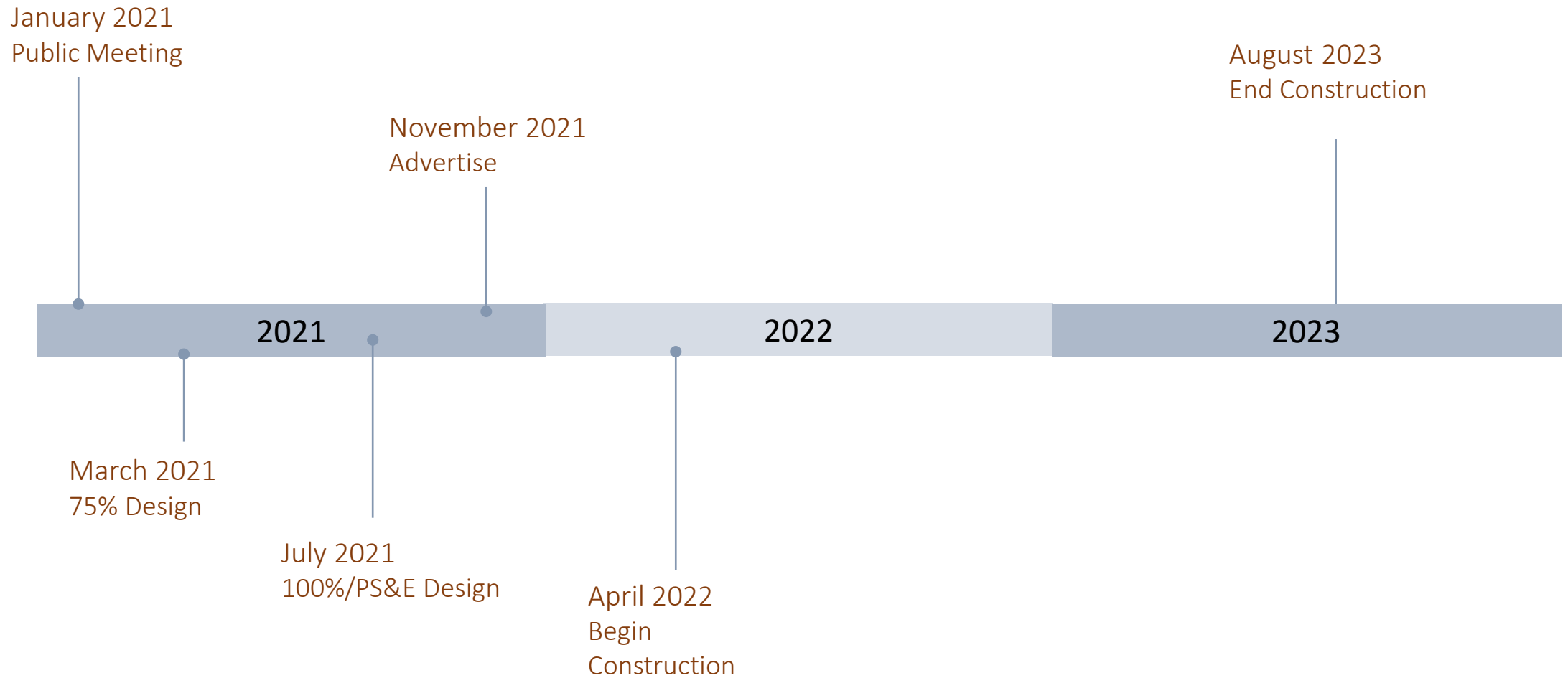
Environmental Permitting/Stormwater Design



- Wetlands are located on both sides of the parkway. The proposed work is within the Newton Conservation Commission jurisdiction. A Notice of Intent will be filed for the work.
- A PNF will be filed with MA Historic Commission.
- MEPA coordination may be required.
- Ground disturbance likely to require preparation of a Stormwater Pollution Prevention Plan
- A brook near the north end of the project limits crosses under the parkway via a concrete box culvert. Existing direct connections to the culvert will be eliminated. New drain system to be installed within areas of new roadway construction.



Current Project Schedule





MASSACHUSETTS DEPARTMENT OF
CONSERVATION AND RECREATION

Additional Information

For more information:

- www.mass.gov/dcr/past-public-meetings

If you have comments or suggestions on this project:

- *Submit online:* www.mass.gov/dcr/public-comment
- *Deadline: Thursday, February 18, 2021*

Please note: the contents of comments submitted to DCR, including your name, town and zipcode, will be posted on DCR's website. Additional contact information provided, notably email address, will only be used for outreach on future updates to the subject project or property.

If you wish to subscribe to a DCR general information or project-related

listserv: contact DCR's Office of Community Relations at 617-626-4973 or Mass.Parks@mass.gov.