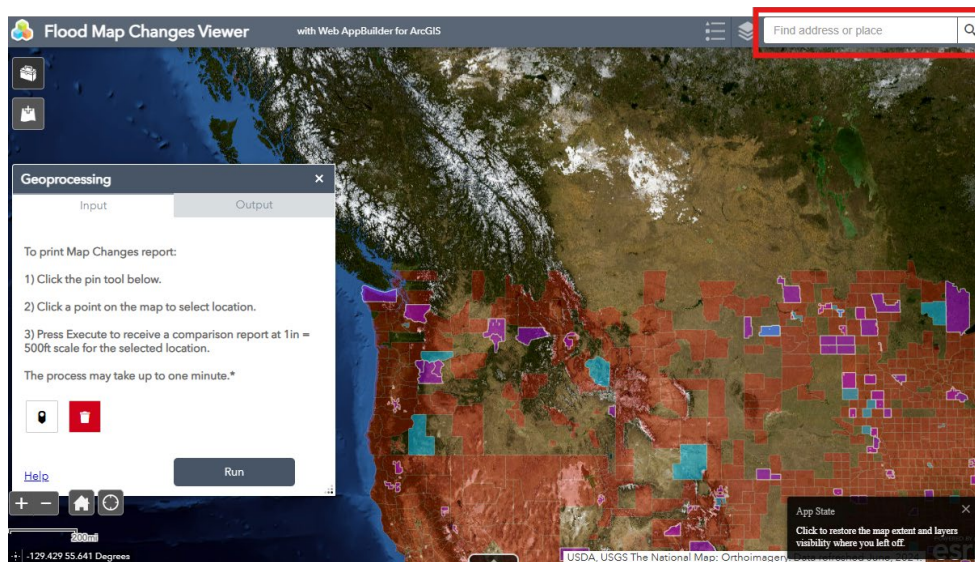


Instruction to view effective, preliminary, and changes since last FIRM layers on FEMA's Flood Map Changes Viewer.

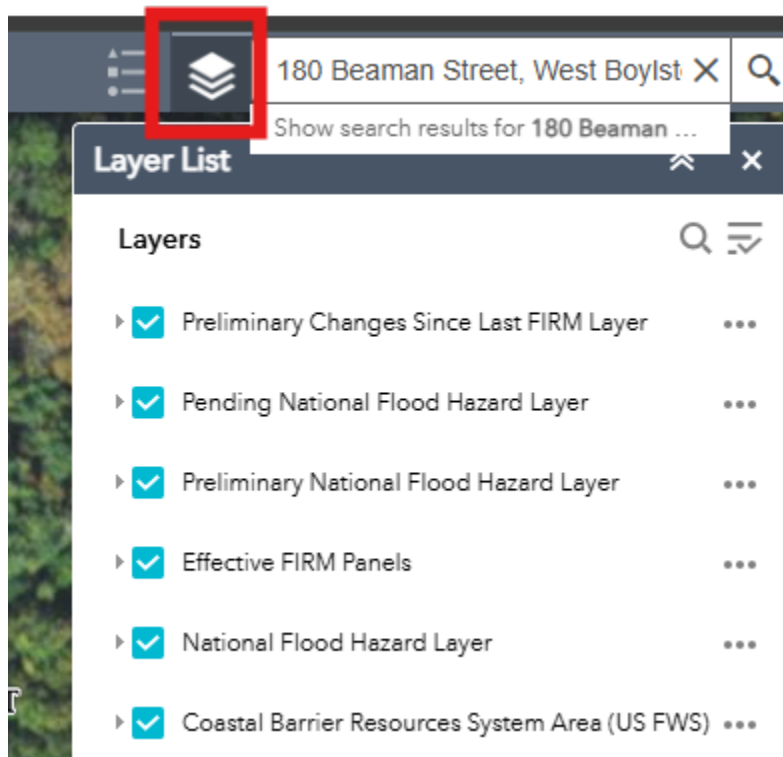
*This viewer should be used for planning purposes only. Please see the effective FIRM for official floodplain delineation.*

Steps to access the [FEMA Flood Map Changes Viewer](#).

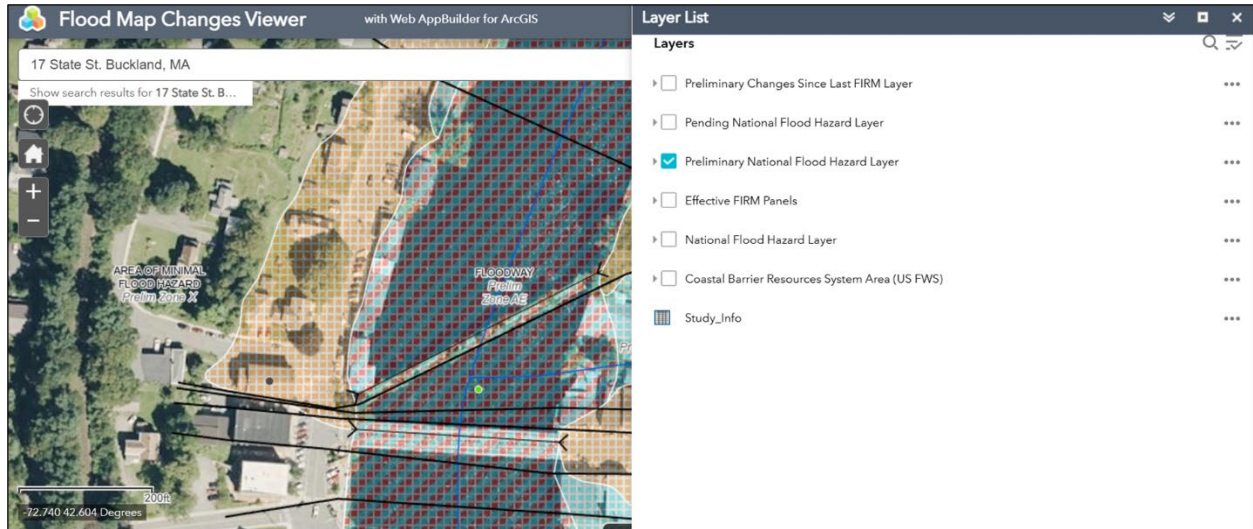
1. Search for a property's address in the top right corner.



2. Click the layers button to toggle on and off layers.



3. Select the layers you wish to view.



4. Click the 'legend' button to understand what is being shown on the viewer.

