

**Massachusetts
Working-level Traffic Records Coordinating Committee (WTRCC) Meeting**

**hosted by
EOPSS' Office of Grants and Research**

January 21, 2021, 12 noon to 1:30 PM

Please join the meeting from your computer, tablet or smartphone.

<https://global.gotomeeting.com/join/184540909>

You can also dial in using your phone.

United States: +1 (646) 749-3122

Access Code: 184-540-909

AGENDA

- Introductions
- Review of and vote to approve February 5, 2020 WTRCC meeting minutes
- MassDOT's Crash Data System Modernization & Stakeholder Engagement
- Unforeseen business/upcoming event announcements/next meeting date
- Adjourn

If any member of the public wishing to attend this meeting seeks special accommodations in accordance with the Americans with Disabilities Act, please contact Mr. Brook Chipman at brook.chipman@mass.gov or 617-725-3355.

massDOT

**MassDOT Crash Data System
Modernization and Shareholder
Engagement**

**DRAFT
12/14/2020**

Page 1

massDOT

Introduction

- MassDOT Technology
 - Gary Blank - CAO
 - David Bedard – CIO
 - John Primerano – Deputy CIO
 - Anu Goutham – Director Applications Development
- DOT's Crash modernization effort is looking to **identify and engage key stakeholders** to ensure we are taking a holistic approach to the project
 - Data input to data analytics
- Data quality and reporting are the areas of focus, we want to move beyond having this project be a typical "technology refresh"
- Today we will walk you through what we are hearing from our business users and a brief overview of the all the parts that deliver Crash data
- We will then open it up to discussion with the committee to gain your insight and guidance

2

massDOT

CRASH System

- **Data Input**
 - RMV receives report of more than 150,000 motor vehicle crashes annually
 - Approximately 90% are received electronically from 328 state and local law enforcement agencies
 - Police agencies contract with RMS vendor systems to submit reports to the RMV system
 - 30 agencies submit reports on paper that is mailed or dropped off at RMV QHQ and is scanned/entered into system by RMV staff
- **How the Data is Used**
 - Police reports used to document date, time, location, environment and characteristics of a crash
 - Required for both police and operators for any crash involving damage to one vehicle of over \$1000 , or any injury or fatality.
 - Ultimate purpose of data is to gain a better understanding of causes of crashes in order to guide crash prevention programming and engineering improvements
 - Reports also used by insurance companies
 - Highway, Traffic Engineering and Safety Division of MassDOT use the crash data collected by the RMV to provide access to portals and dashboards through the IMPACT Crash system. This system allows public access to the crash data.

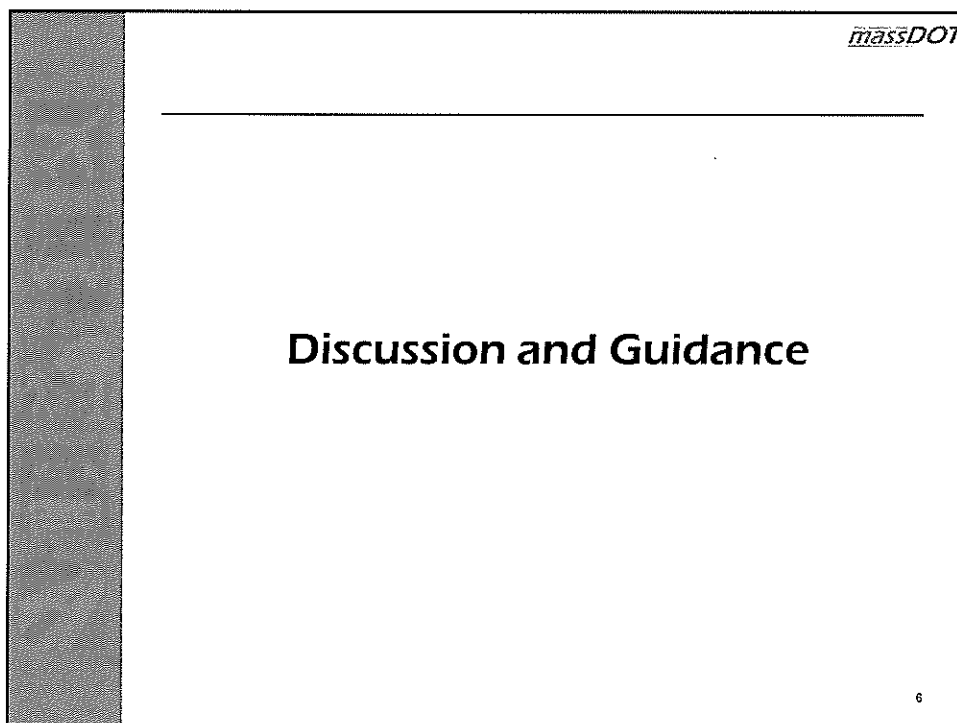
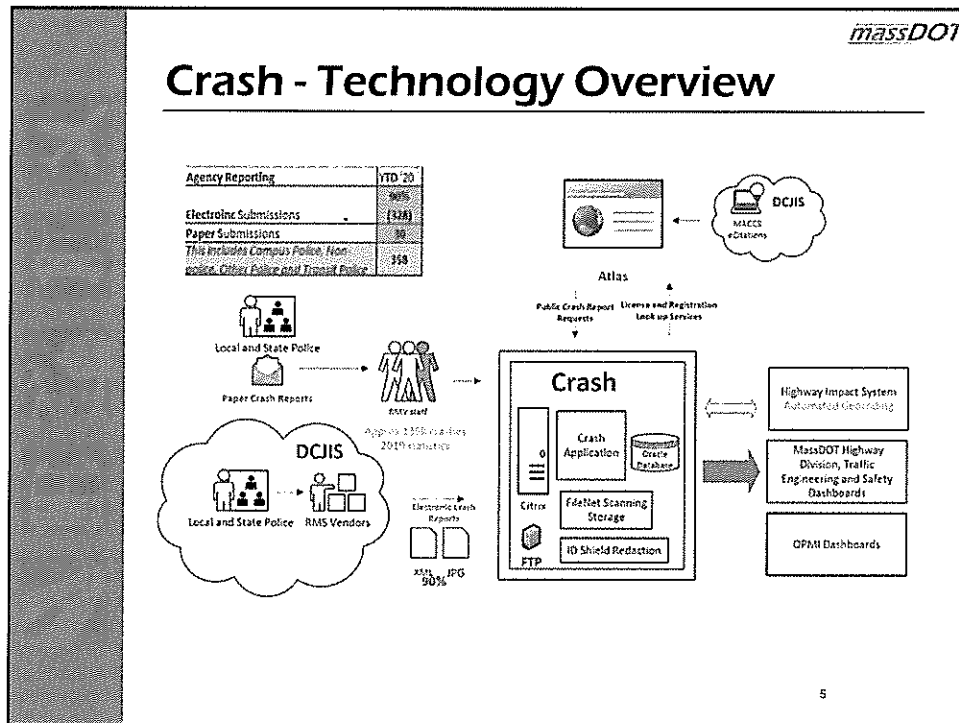
3

massDOT

CRASH Issues – Business Perspective

- **Data Quality**
 - Lacks direct connection to key systems(FARS and SafetyNet) causing data inconsistencies
 - Causes confusion when presenting data
- **Other Considerations**
 - Technology is over 20 years old
 - Does not have data validation/quality control
 - Requires IT help to run reports, leads to inefficient work process
 - Current system is not easily configurable
 - Need ability to update crash reports both electronic and paper, based on new information
 - Can not store reconstruction reports
 - No method to redact and store images in one system
 - Need ability to maintain and change police contact information
 - Not able to track resubmitted crash reports

4



Thank you for your time!