



# GREEN LINE EXTENSION PROJECT



**massDOT**  
Massachusetts Department of Transportation



1



GLX Project Open House  
East Somerville Community School  
January 30, 2019

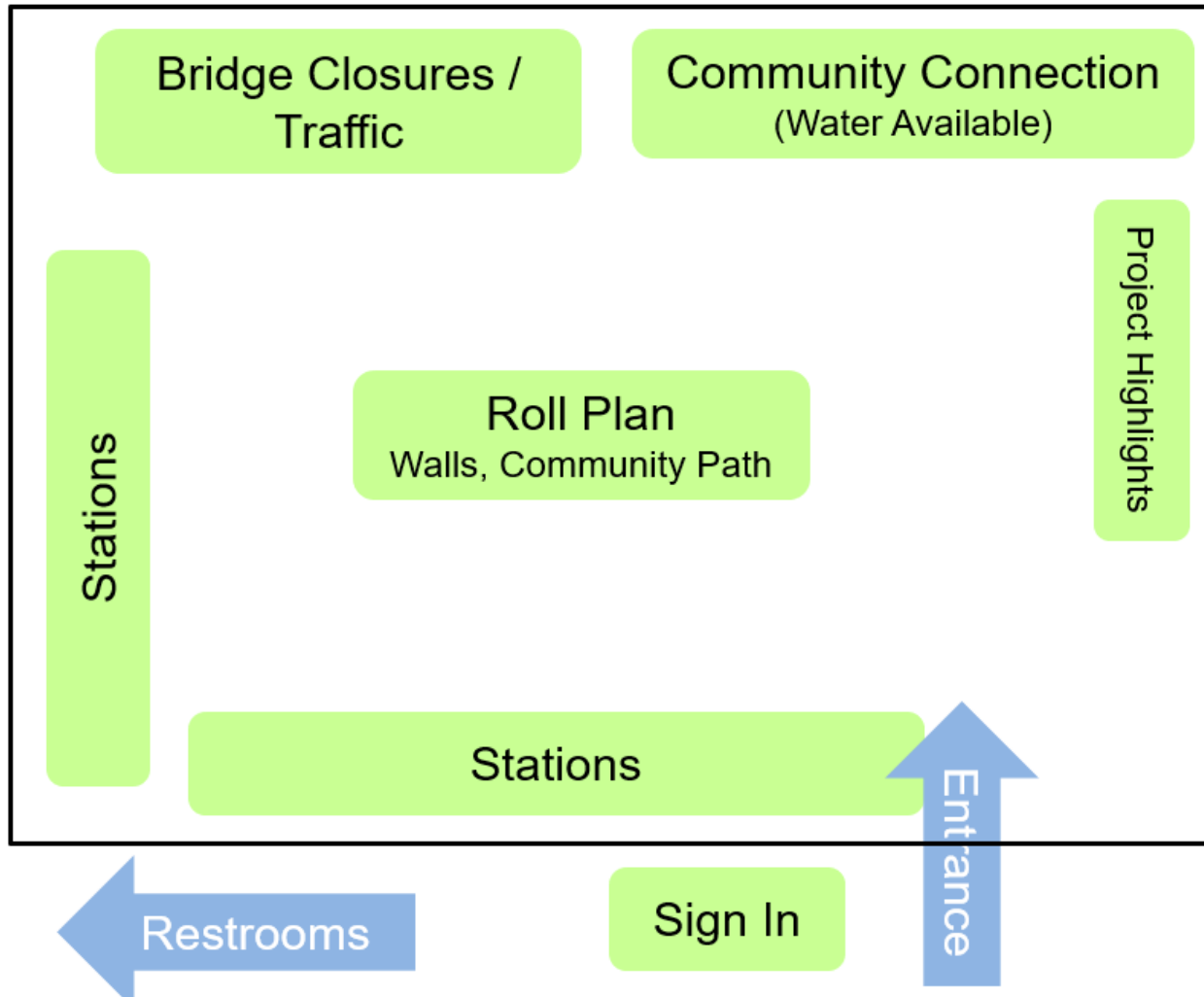
# Welcome!

Thanks for spending part of  
your evening with us.

The GLX Project Team

The GLX Project  
appreciates our project  
partners who work for the  
cities of Somerville,  
Cambridge, and Medford.  
Together we find solutions.

# Open House



*You've got Questions,  
We've got Answers*



# Our Vision

## Project Goals

- Safety – everyone goes home to their families
- Collaborate in accordance with charter to resolve issues
- Complete Project on time & under budget and achieve both parties financial objectives
- Zero claims (make Disputes Resolution Board non-essential)
- Build a high-quality project which leaves a positive impact on the community
- Successfully complete the project as “success” as defined by key stakeholders

# Our Vision

## Project Principles

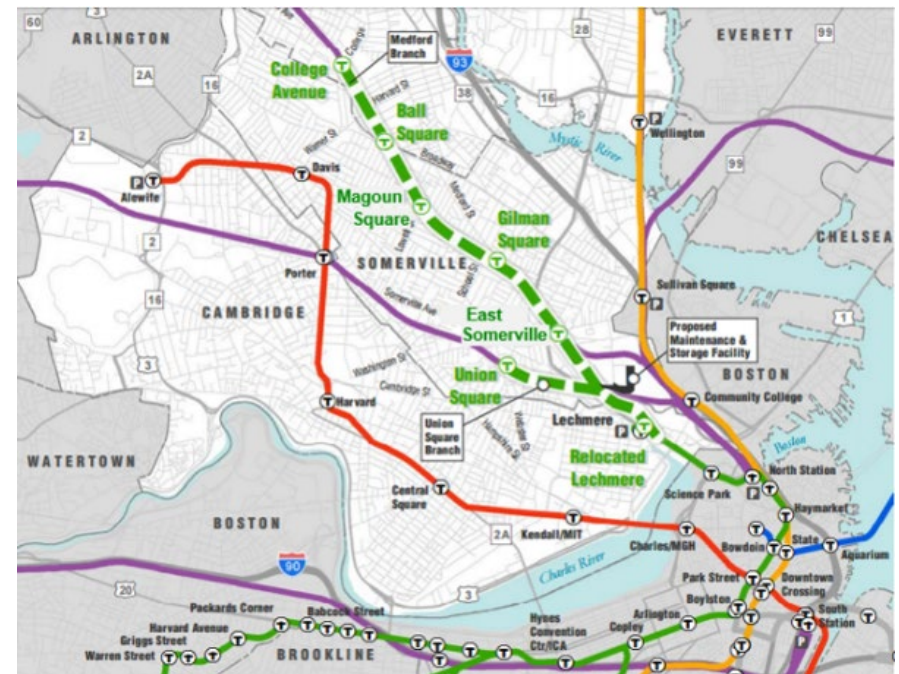
- The project is the Champion
- Act with integrity and honesty
- Create an environment where you enjoy coming to work
- Open, Honest, Full Disclosure of Issue/Full Transparency
- Do your research
- Be respectful
- Be direct and clear with your message
- No Surprises
- Maintain an open Mind
- Objective Listening before taking a position
- Strive to resolve the problem quickly – expedite solutions
- Final decision makers collocate onsite
- Willingness to change your opinion
- Leave posturing at the door

# Summary Scope

- 1) Seven new light-rail GLX stations**
  - Relocated Lechmere Station
  - 5 on Medford Branch
  - 1 on Union Square Branch
- 2) Conforms with all environmental commitments and committed scope elements**
- 3) Includes a multiuse community path (Lowell Street to Cambridge Crossing/Lechmere)**
- 4) Procurement of 24 Green Line light rail vehicles**
- 5) Vehicle Maintenance Facility (VMF)**
- 6) Any future Green Line service to Route 16 and/or Porter Square is not precluded**

# Overview Schedule

- Design & Pre-Construction Work | Winter 2018
- Alignment Tree Clearing | Spring - Summer 2018
- **Construction | Summer 2018 - Spring 2021**
- Testing | Spring 2020 - Late 2021
- Opening | Late 2021



# Overview Schedule

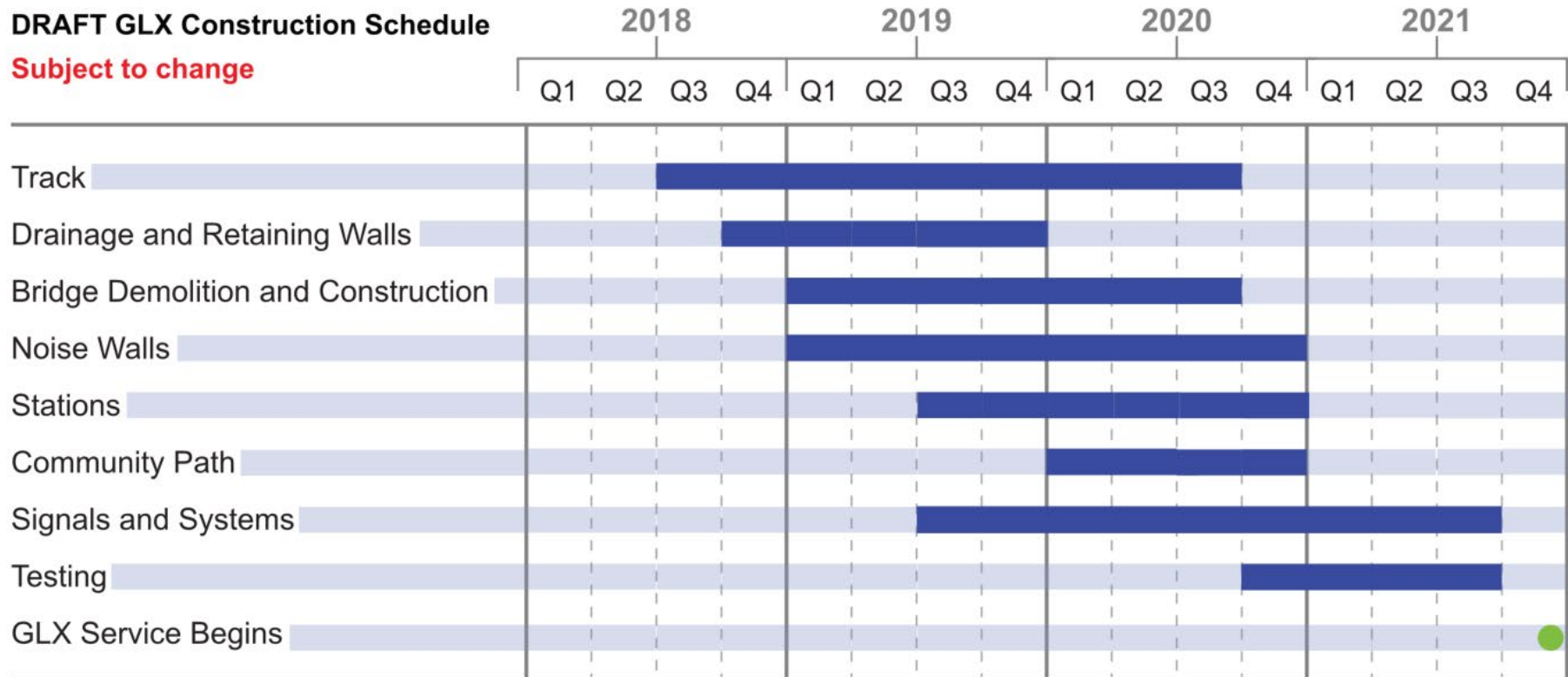


## Project Schedule



### DRAFT GLX Construction Schedule

Subject to change



**massDOT**  
Massachusetts Department of Transportation



# GLX Final Configuration

December 2021



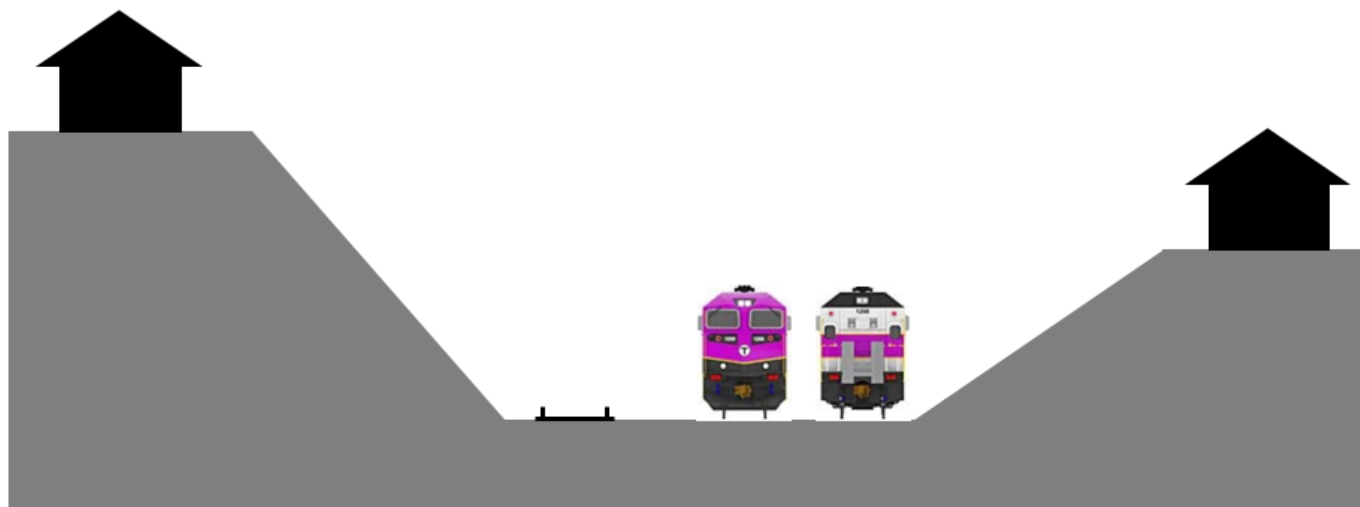
**massDOT**  
Massachusetts Department of Transportation





# Construction Sequencing

Original  
Configuration



Summer 2018



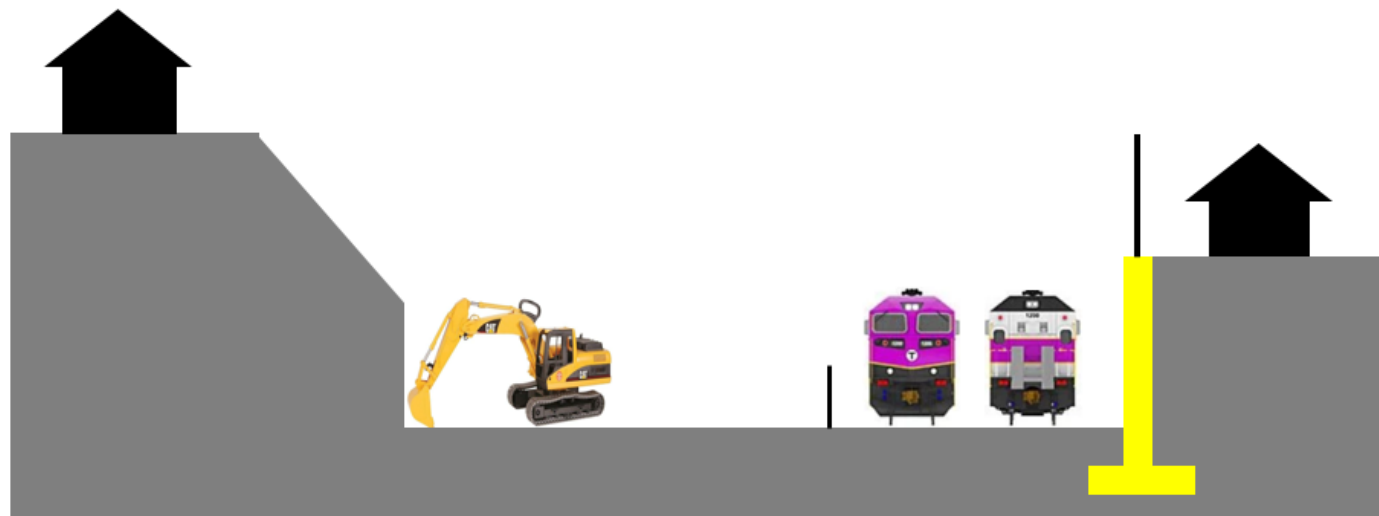
**massDOT**  
Massachusetts Department of Transportation

# Construction Sequencing

October 2018

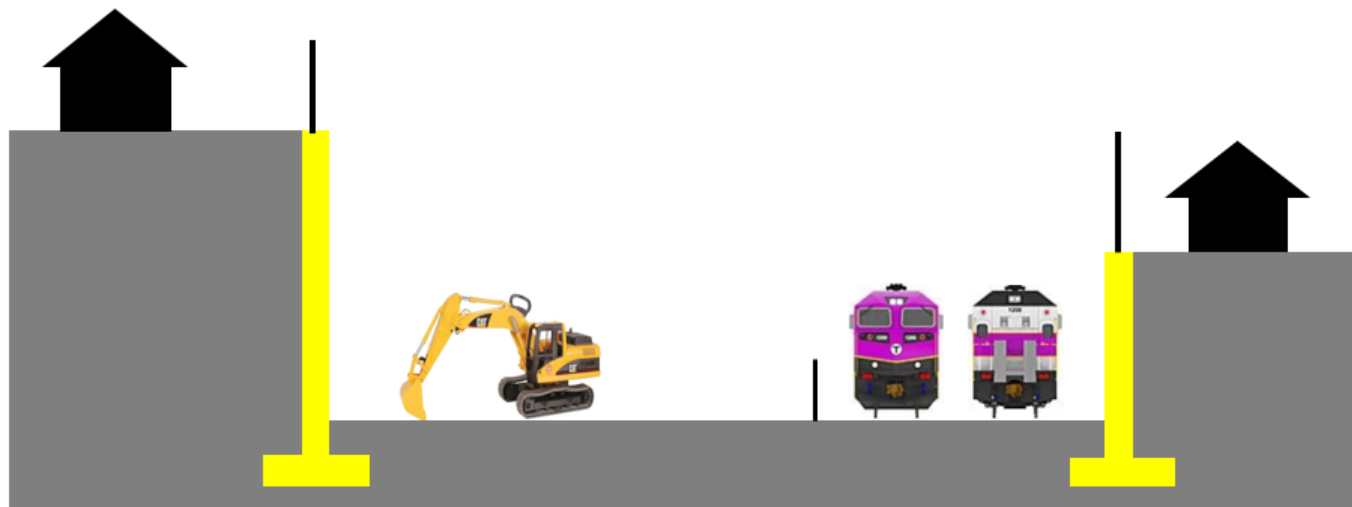


2020

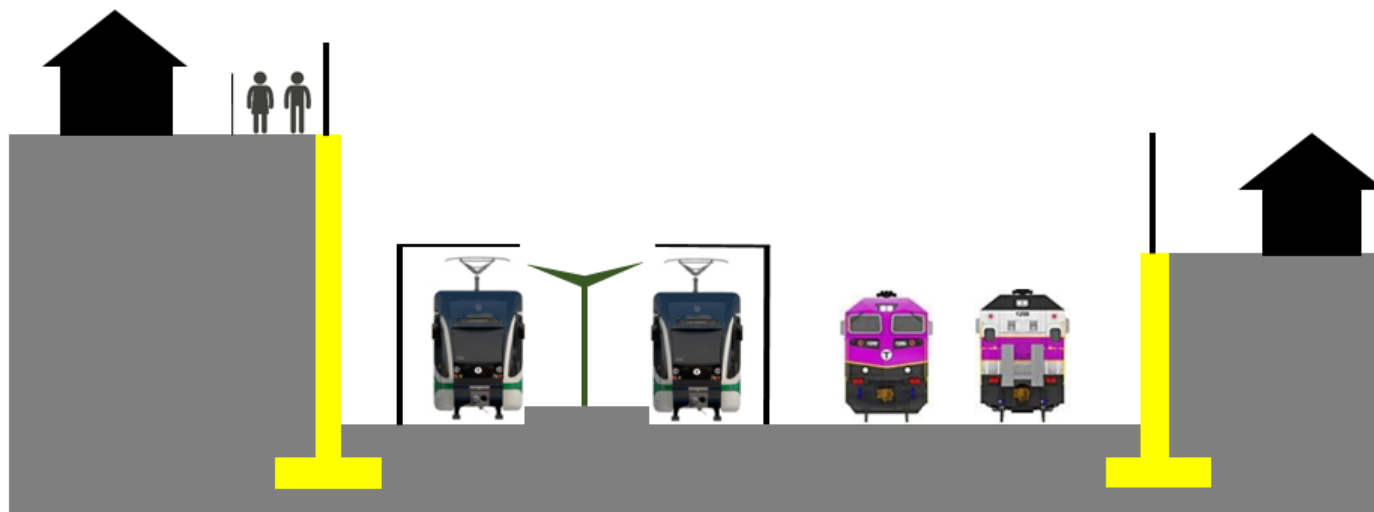


# Construction Sequencing

2020 / 2021



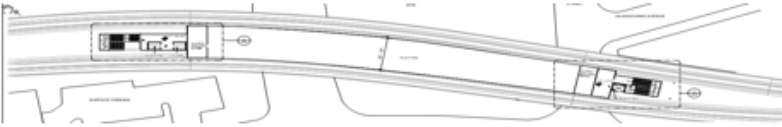

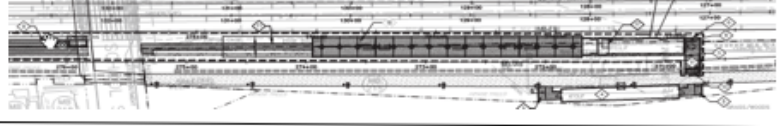
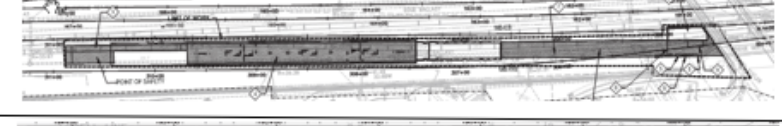



December 2021



**massDOT**  
Massachusetts Department of Transportation

# Initial Performance Indicator – Dashboard Graphics

## Design Station Progress Update\*

		% Complete	
		<u>Mar 2018</u>	<u>Dec 2018</u>
• Lechmere		10%	76%
• East Somerville		0%	23%
• Gilman		30%	80%
• Magoun		0%	44%
• Ball Square		0%	45%
• Union Square		0%	24%
• College Ave.		5%	75%

**D  
E  
S  
I  
G  
N**

*\*Average design completion status across 58 total design packages = 60%*



**massDOT**  
Massachusetts Department of Transportation



# Bridge Closures

Bridge Closures	2018				2019				2020				2021			
	FALL	WINTER	SPRING	SUMMER	FALL	WINTER	SPRING	SUMMER	FALL	WINTER	SPRING	SUMMER	FALL	WINTER	SPRING	SUMMER
Broadway																
Washington Street																
Medford Street																
School Street																
College Avenue*																
Cedar Street																
Lowell Street																

**DRAFT**

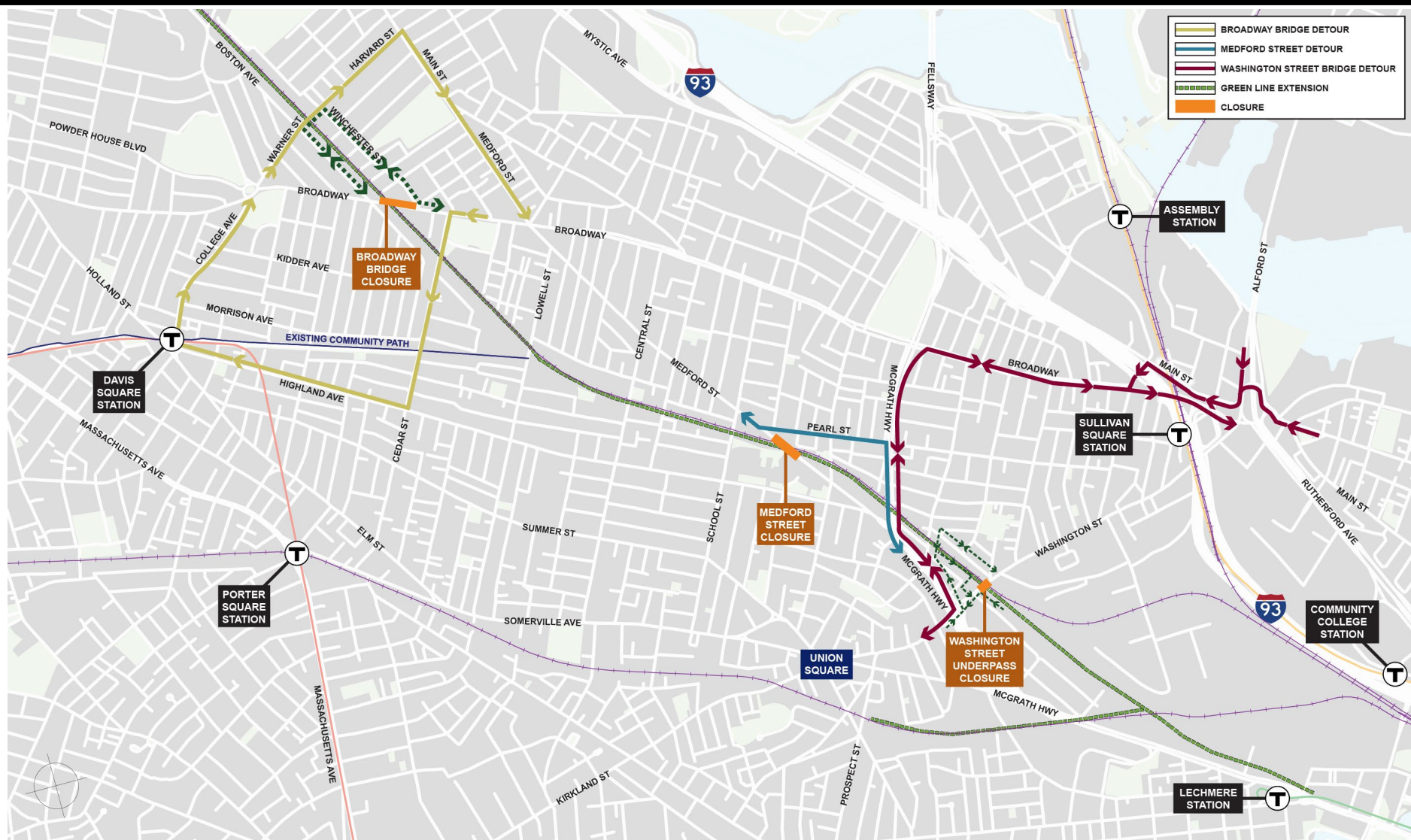
\*Traffic through College Avenue will remain open throughout construction

Note: Medford and School Street Bridges will not be closed at the same time. The closings are sequential. Dates subject to change.





# 2019 Bridge Closures



**massDOT**  
Massachusetts Department of Transportation





# Bridge Replacement Approach



## Broadway Bridge (Target Start: March 2019)

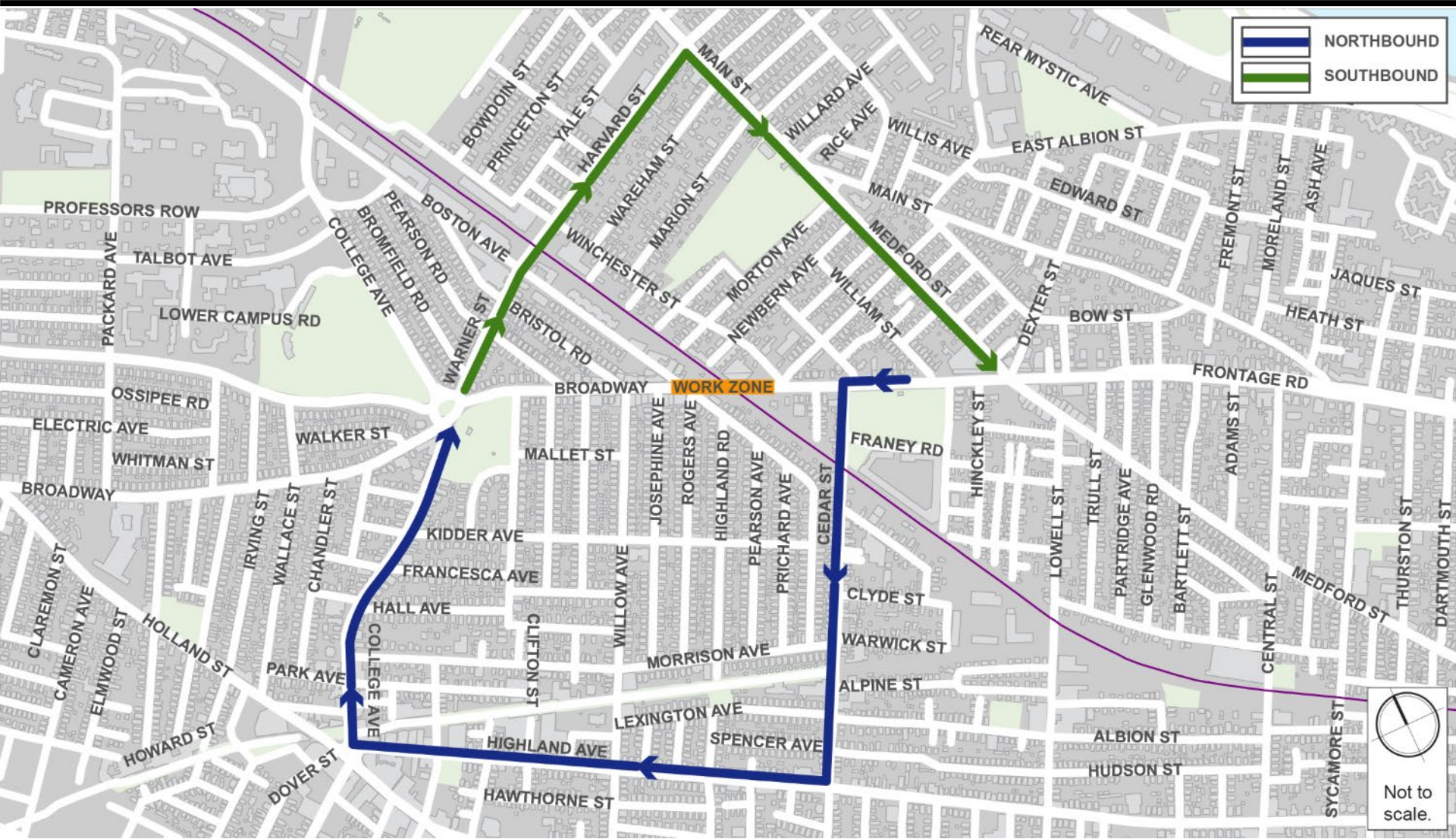


**massDOT**  
Massachusetts Department of Transportation



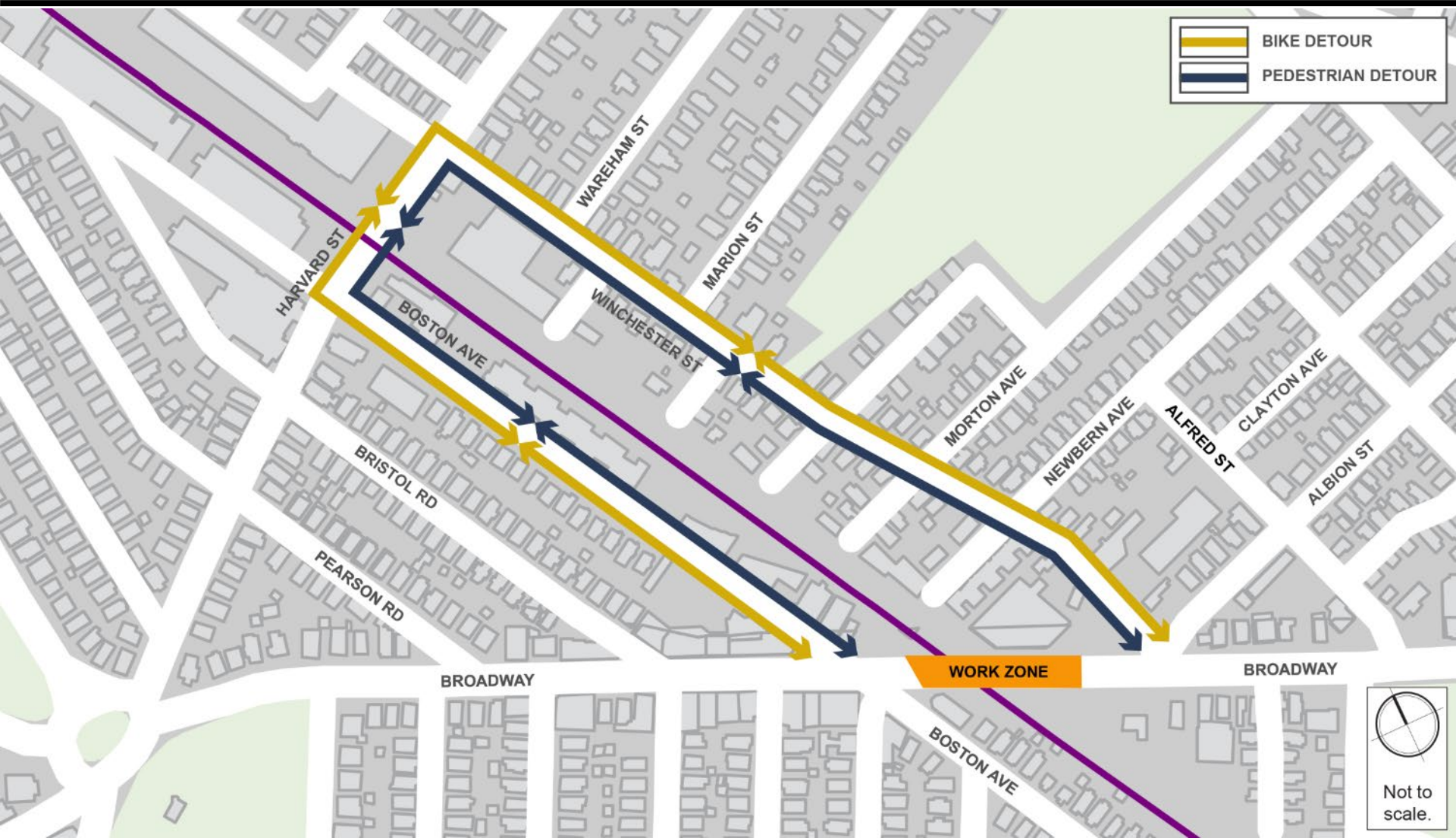


# Broadway Bridge Detours - Traffic





# Broadway Bridge Detours – Pedestrians and Bikers

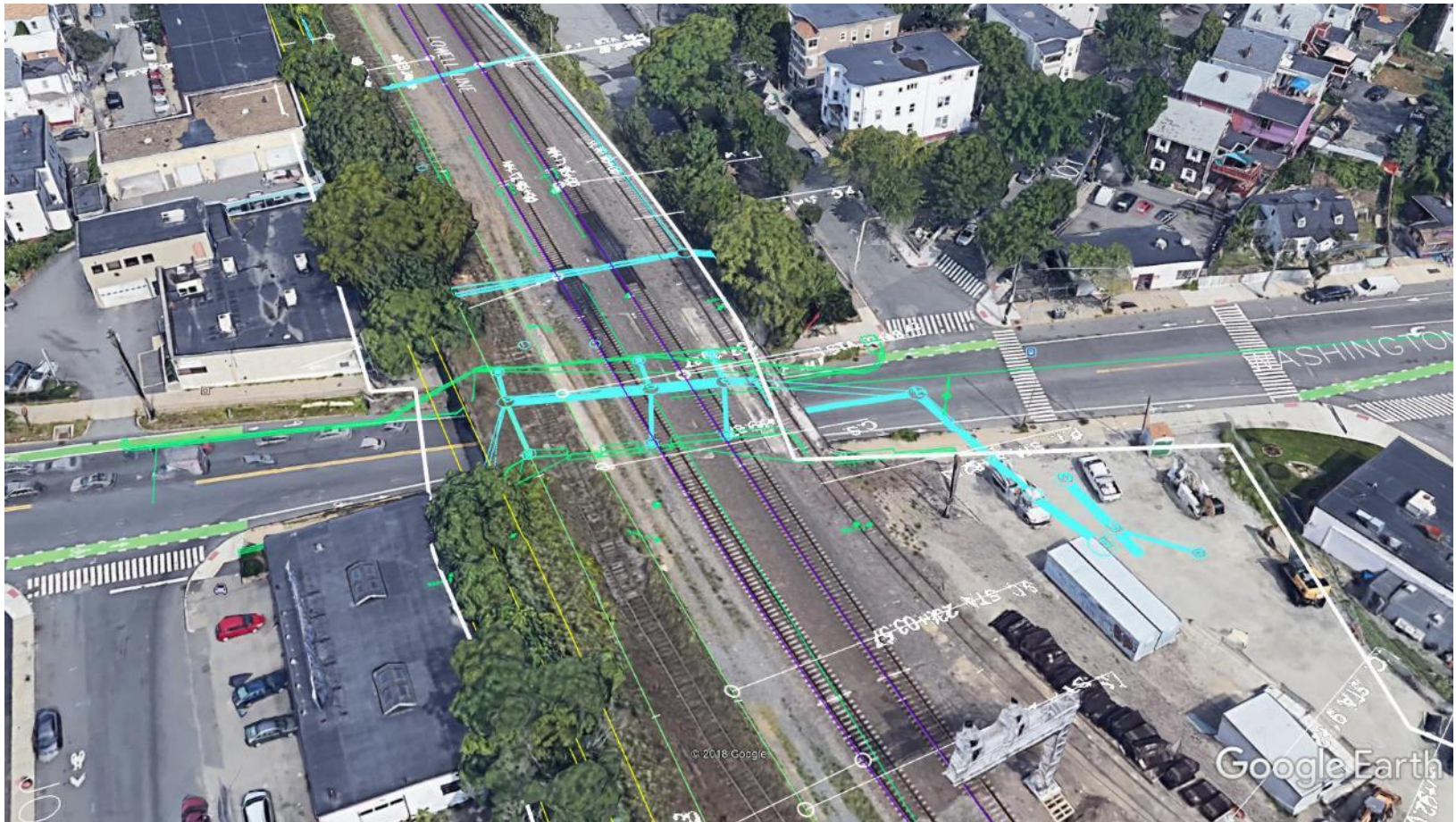




# Bridge Replacement Approach



**Washington Street Bridge –  
(Targeting Phase I – Early to Late 2019, Phase II – Spring to Fall 2020)**

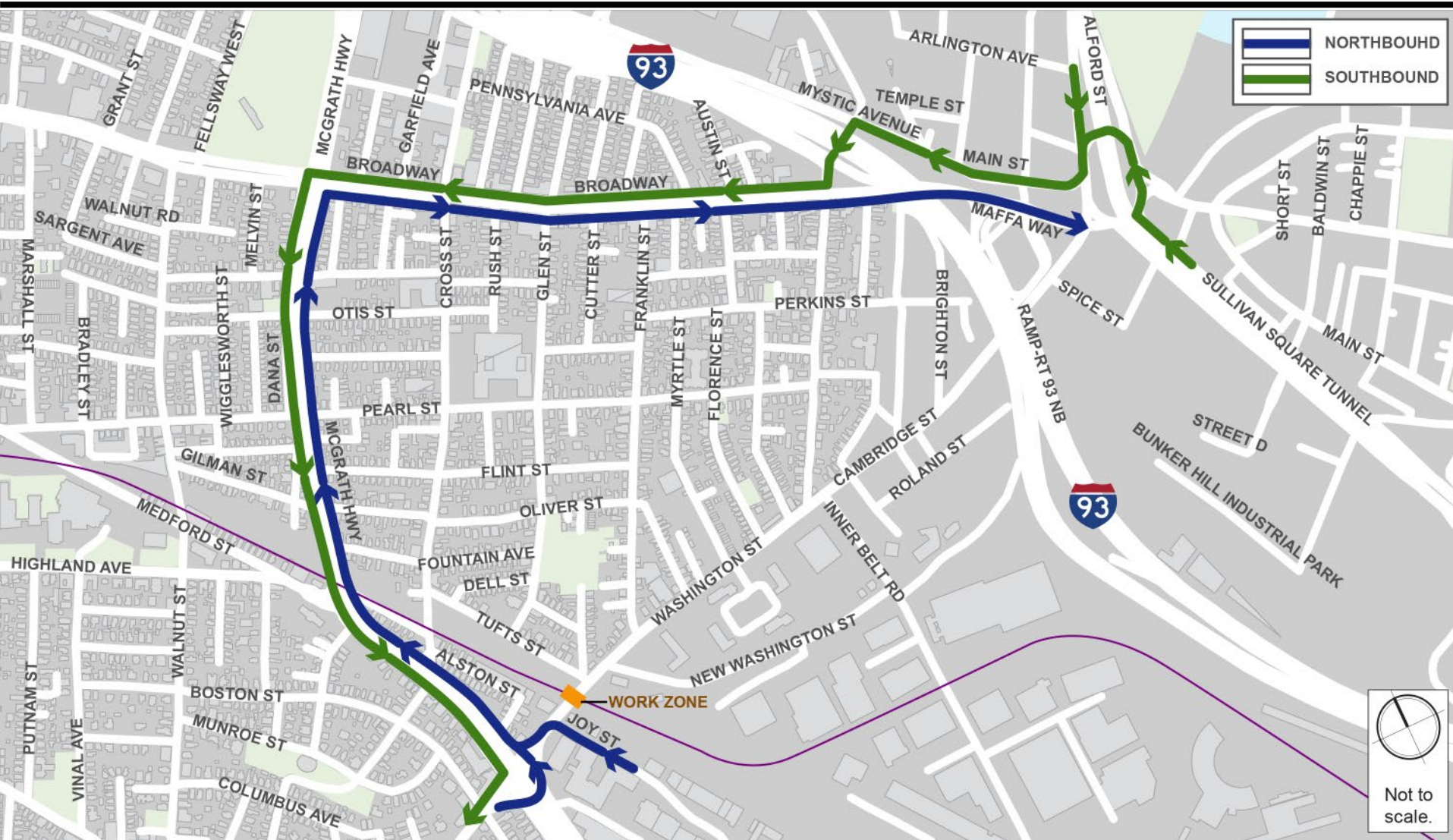


**massDOT**  
Massachusetts Department of Transportation

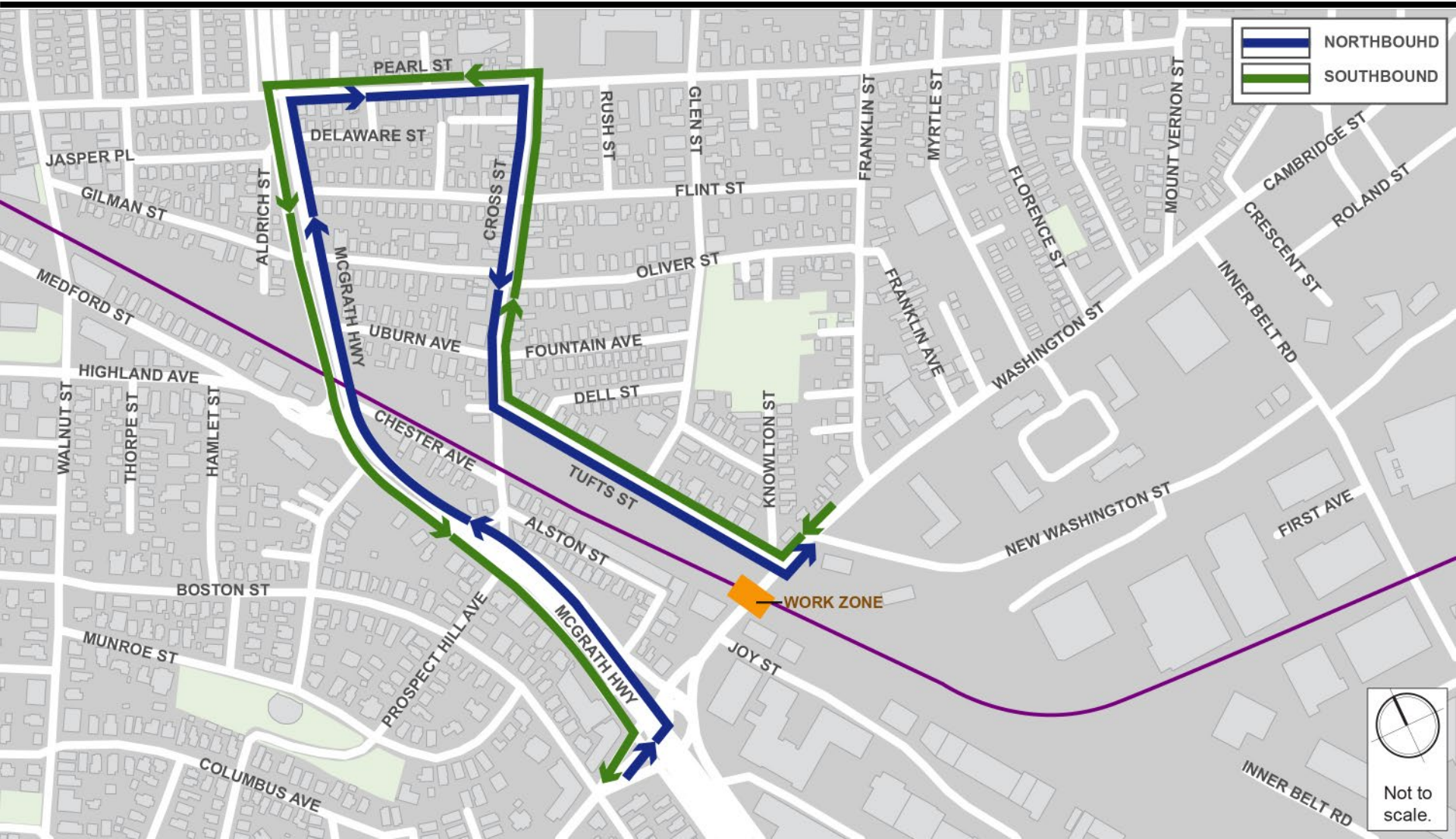




# Washington St. Bridge Detours - Regional

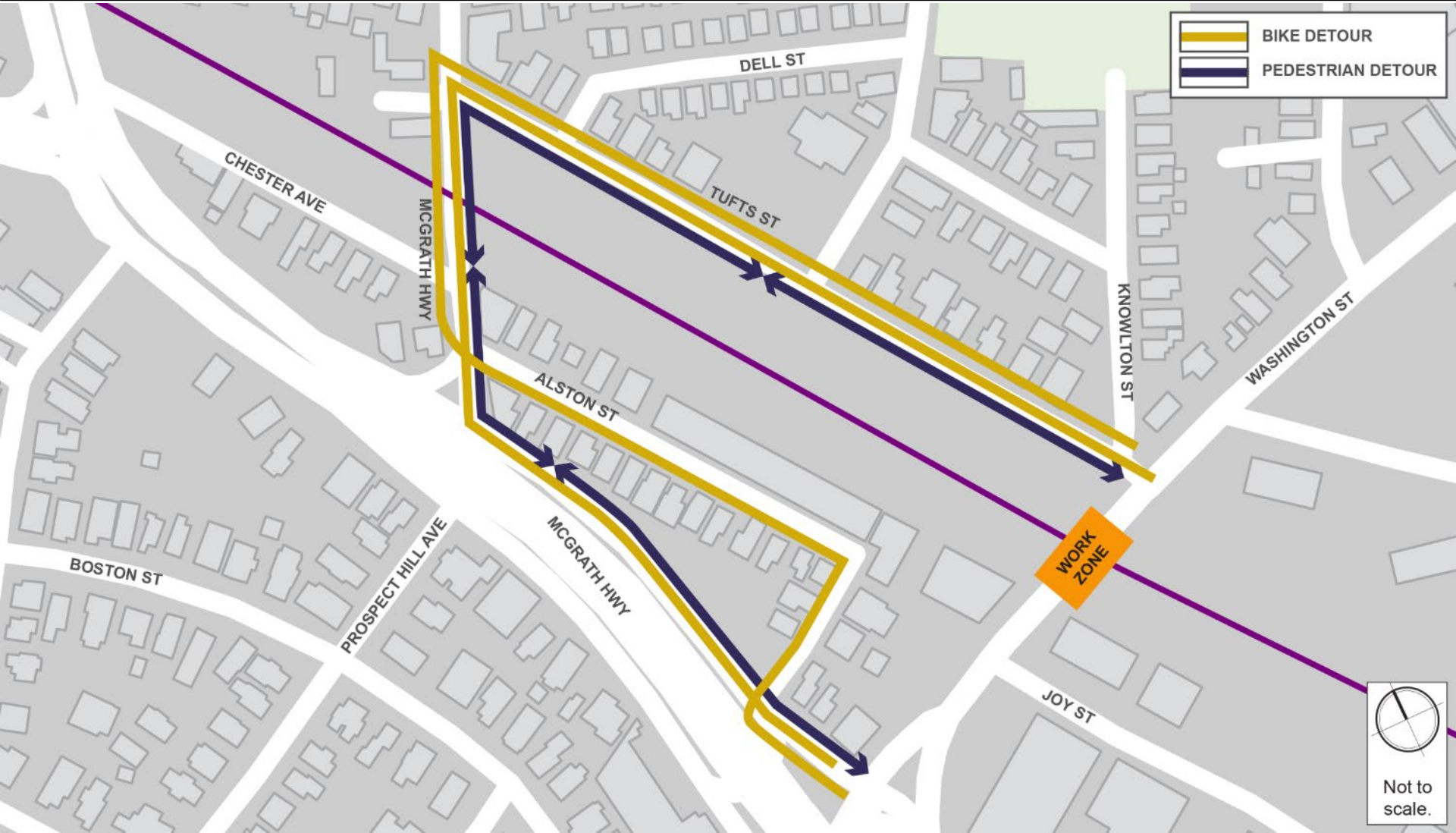


# Washington St. Bridge Detours – Local





# Washington St. Bridge Detours – Peds/Bikes



# Construction Highlights



## Green Line Extension Project Groundbreaking

(June 25 – Future Union Square Station)



**massDOT**  
Massachusetts Department of Transportation



# Construction Highlights



## Green Line Extension Project Groundbreaking

(June 25 – Future Union Square Station)



**massDOT**  
Massachusetts Department of Transportation





# Construction Highlights



*April 2018*



*Winter 2018*

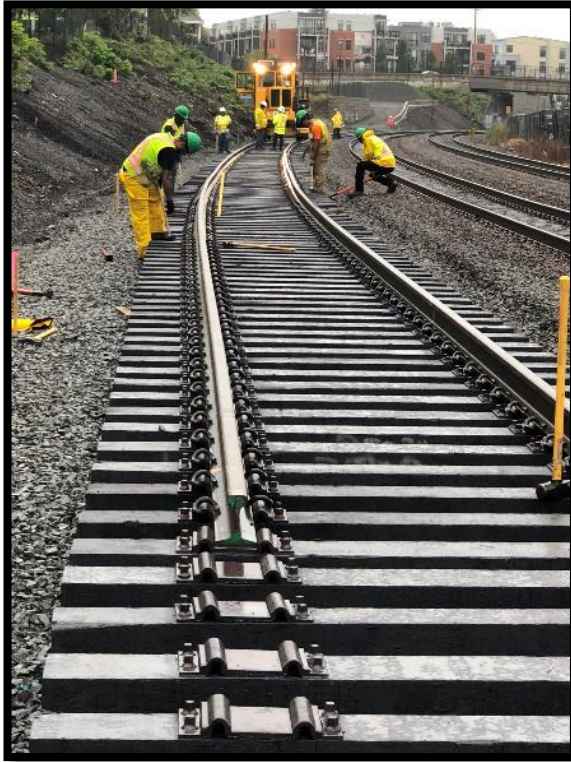
**Track Shift Completed October 2018**



**massDOT**  
Massachusetts Department of Transportation



# Construction Highlights



**Track Shift Completed October 2018**

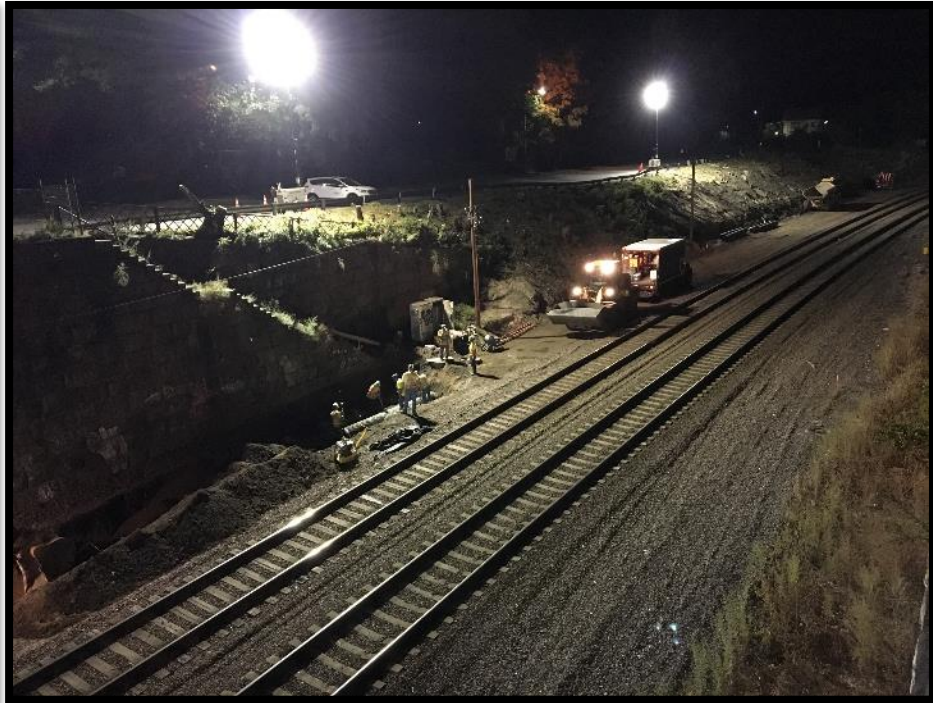


**massDOT**  
Massachusetts Department of Transportation





# Construction Highlights



**Track Shift Completed October 2018**



**massDOT**  
Massachusetts Department of Transportation





# Welcome!

Thanks for spending part of  
your evening with us.

*The GLX Project Team*

# Construction Highlights



**Crew Of The Month**



## Safety

Zero Lost Time Accidents

3,400 + employees and subcontractors completed OSHA & Site Safety Training

Emphasis on building a strong safety culture

We care about the safety of our co-workers



**massDOT**  
Massachusetts Department of Transportation



# Construction Highlights



*Silicone Mold Cast of Lions Head (Sept. 14, 2018)*

## Demolition of Homans Building



**massDOT**  
Massachusetts Department of Transportation





# Construction Highlights



*Extraction of Lions Head & Surround (Sept. 19, 2018)*

## Demolition of Homans Building



**massDOT**  
Massachusetts Department of Transportation



# Construction Highlights



*Asbestos Abatement (November 2018)*

## Demolition of Homans Building



**massDOT**  
Massachusetts Department of Transportation





# Construction Highlights



*Asbestos Abatement & Utility Isolation (late 2018/early 2019)*

## Demolition of 3<sup>rd</sup> Avenue Buildings



**massDOT**  
Massachusetts Department of Transportation





# Construction Highlights



*Asbestos Abatement (December 2018)*



## Demolition at Ball Square



**massDOT**  
Massachusetts Department of Transportation



# Construction Highlights



*Then*



*Now*

## Progress South of Walnut



**massDOT**  
Massachusetts Department of Transportation





# Construction Highlights



*Then*



*Now*

**Progress North of School St.**



**massDOT**  
Massachusetts Department of Transportation



# Construction Highlights



*Then*



*Now*

**Progress North of Central St.**



**massDOT**  
Massachusetts Department of Transportation





# Construction Highlights



*Then*



*Now*

**Progress North of Lowell St.**



**massDOT**  
Massachusetts Department of Transportation



# Construction Highlights



*Then*



*Now*

**Progress South of Cedar St.**



**massDOT**  
Massachusetts Department of Transportation





# Construction Highlights



*Then*



*Now*

**Progress North of Cedar St.**



**massDOT**  
Massachusetts Department of Transportation





# Construction Highlights



*Then*



*Now*

## Progress North of Broadway



**massDOT**  
Massachusetts Department of Transportation



# Construction Highlights



*Then*



*Now*

**Progress North of College Ave.**



**massDOT**  
Massachusetts Department of Transportation





# Construction Highlights



Trash Removal

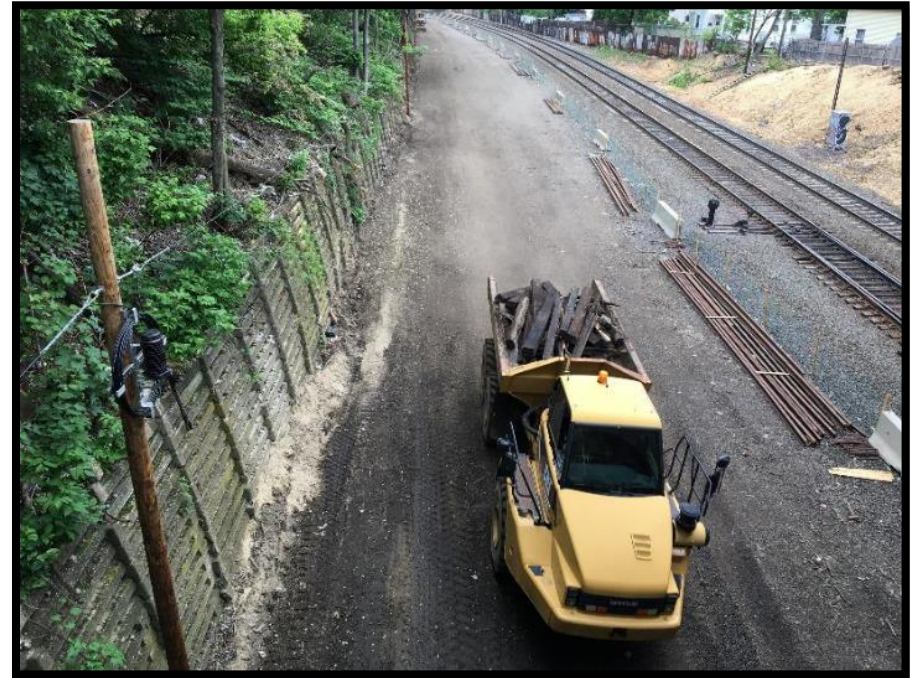


**massDOT**  
Massachusetts Department of Transportation





# Construction Highlights



Old Track Removal



**massDOT**  
Massachusetts Department of Transportation



# Welcome!

Thanks for spending part of  
your evening with us.

*The GLX Project Team*



The GLX Project  
appreciates our project  
partners who work for the  
cities of Cambridge,  
Medford and Somerville.  
Together we find solutions.

# GLX Project Open House

**Public Comments at**

[info@GLXinfo.com](mailto:info@GLXinfo.com)

For more information including FAQ's and  
to sign up for email updates:

[www.greenlineextension.org](http://www.greenlineextension.org)

**24/7 Construction Hotline: 1-855-459-4636**

# Our Vision

## Project Goals

- Safety – everyone goes home to their families
- Collaborate in accordance with charter to resolve issues
- Complete Project on time & under budget and achieve both parties financial objectives
- Zero claims (make DRB non-essential)
- Build a high-quality project which leaves a positive impact on the community
- Successfully complete the project as “success” as defined by key stakeholders



# Our Vision

## Project Principles

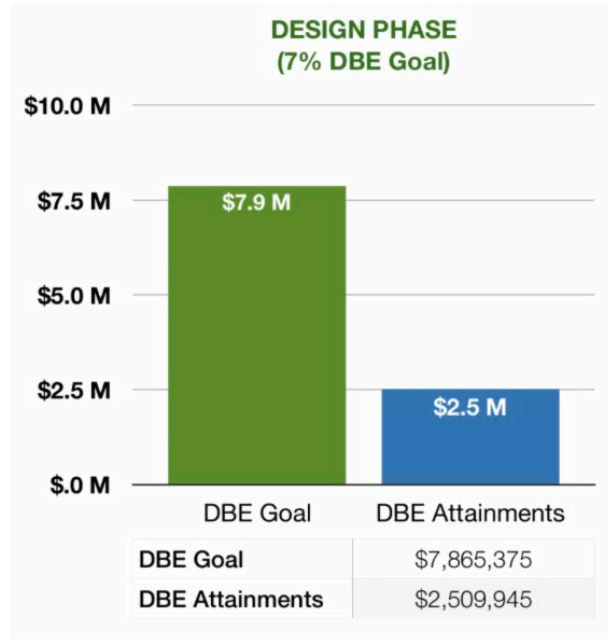
- The project is the Champion
- Act with integrity and honesty
- Create an environment where you enjoy coming to work
- Open, Honest, Full Disclosure of Issue/Full Transparency
- Do your research
- Be respectful
- Be direct and clear with your message
- No Surprises
- Maintain an open Mind
- Objective Listening before taking a position
- Strive to resolve the problem quickly – expedite solutions
- Final decision makers collocate onsite
- Willingness to change your opinion
- Leave posturing at the door



## Disadvantaged Business Enterprise (DBE) Program

# Outreach Highlights

## DBE PARTICIPATION UPDATE: THROUGH 11/30/18

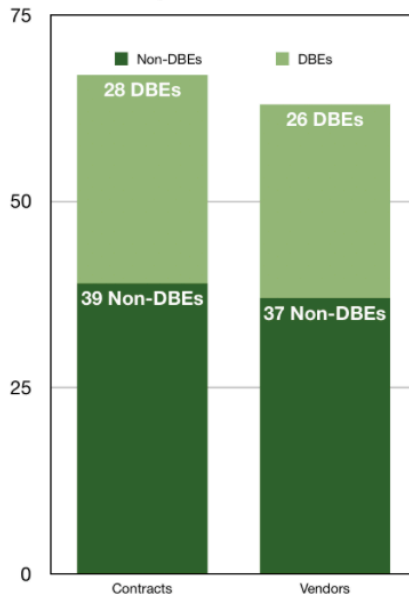


## Disadvantaged Business Enterprise (DBE) Program



# Outreach Highlights

Green Line Project  
By the Numbers



Notes:

- The Contracts column shows the number of contracts held by DBE and Non-DBE firms on the project.
- The Vendors column shows the number of unique DBEs and Non-DBEs on the project.

## HOW DBEs CAN GET INVOLVED

GLXC sends out Notice of Interest (NOI) emails to all MassUCP DBE Certified firms for each contract opportunity available on the Project. NOIs describe the specific scopes of services GLXC is seeking and provides instruction on how you can let us know if your firm is interested and capable. All you need to do is respond to the NOI to be considered.

You can also email Joe Hernandez, GLXC DBE Program Manager, at [joe.hernandez@glxconstruct.com](mailto:joe.hernandez@glxconstruct.com) with any questions.

## Disadvantaged Business Enterprise (DBE) Program

# Outreach Highlights



**Community Working Group**



**massDOT**  
Massachusetts Department of Transportation



# Outreach Highlights



*ArtBeat Festival (July 14, 2018)*



*SomerStreets (Aug. 5, 2018)*

## Outreach at Community Events



**massDOT**  
Massachusetts Department of Transportation



GLX Project Open House  
East Somerville Community School  
January 30, 2019



# Outreach Highlights



*Ball Square (July 20, 2018)*



*SomerStreets (Sept. 16, 2018)*

## Outreach at Community Events



**massDOT**  
Massachusetts Department of Transportation



# Outreach Highlights



*Gilman Square Block Party (Sept. 15, 2018)*



*Gilman Square Block Party (Sept. 15, 2018)*

## Outreach at Community Events



**massDOT**  
Massachusetts Department of Transportation



GLX Project Open House  
East Somerville Community School  
January 30, 2019



# Outreach Highlights



*A Ball for Squares* (Sept. 30, 2018)



*SomerStreets* (Oct. 14, 2018)

## Outreach at Community Events



**massDOT**  
Massachusetts Department of Transportation





# Outreach Highlights



*GLX Discussion over Coffee at Winter Hill Brewery  
(Dec. 5, 2018)*



*GLX Discussion over Coffee at Winter Hill Brewery  
(Dec. 5, 2018)*

## Community Working Group



**massDOT**  
Massachusetts Department of Transportation



GLX Project Open House  
East Somerville Community School  
January 30, 2019

# Outreach Highlights



*Project 300 Food Drive (November 2018)*



*GLX Project Food Drive for Project Soup in Somerville (November 2018)*

**Community Connection Team**



**massDOT**  
Massachusetts Department of Transportation





# Outreach Highlights



*Food & Personal Care Products to Project Soup in Somerville (December 2018)*



*Providing Meals to Youth on Fire in Cambridge (December 2018)*

## Community Connection Team



**massDOT**  
Massachusetts Department of Transportation





# Outreach Highlights



*Toy & Clothing Donations for the Medford Family Network (December 2018)*

## Community Connection Team

# Outreach Highlights



*Replacing a home-made zipline with a bridge so children can safely get to school in Bolivia (December 2018)*



## Community Connection Team



**massDOT**  
Massachusetts Department of Transportation



# GLX Project Open House

**Public Comments at**

[info@GLXinfo.com](mailto:info@GLXinfo.com)

For more information including FAQ's and  
to sign up for email updates:

[www.greenlineextension.org](http://www.greenlineextension.org)

**24/7 Construction Hotline: 1-855-459-4636**