

Upping Your Logic Model Game

January 2021



Technical Overview - Zoom

- If you are experiencing any technical issues with the audio or video for this session, please let us know in the chat box or email Kaila Hough at **KHough@ovcttac.org**.
- We have additional staff supporting behind the scenes for technological issues!
- If you have questions along the way, please feel free to share them in the chat box.

Today's Presenters



Laney Gibbes, LCSW

*Victim Services Consultant
OVC Training and Technical Assistance
Center*



Samantha S. Lowry

*Senior Director of Research and Evaluation
OVC Training and Technical Assistance
Center*

Tiers of Trainings



INTRO TO LOGIC
MODELS



UPPING YOUR
LOGIC MODEL
GAME



THE OUTCOME
MEASUREMENT
TOOL

OVC Training and Technical Assistance Center



Training



Customized Technical Assistance



Speaker Support



National Victim Assistance Academy

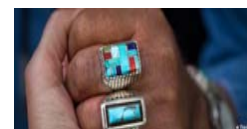
SPECIAL FOCUS AREAS



Human Trafficking



Legal Assistance



Tribal Victim Assistance



Mass Violence and
Terrorism



Sexual Assault Nurse Examiners-
Sexual Assault Response Teams

Where are we headed?

- To identify what activities programs are implementing
- To determine what outcomes these activities are having on victims and the community
- To ensure that programming is making a positive impact on victims and their families

Training Objectives

After completing the training, programs should be able to:

- Describe theory of change and more complex logic model concepts.
- Review logic models and define program outcomes to measure success.
- Understand data collection and ways to utilize logic models in practice.

Logic Models 102



How many of you are familiar with the Theory of Change?



How many of you have already identified outcomes for your program?



What challenges have you experienced with developing your logic models?

Logic Models and Theory of Change

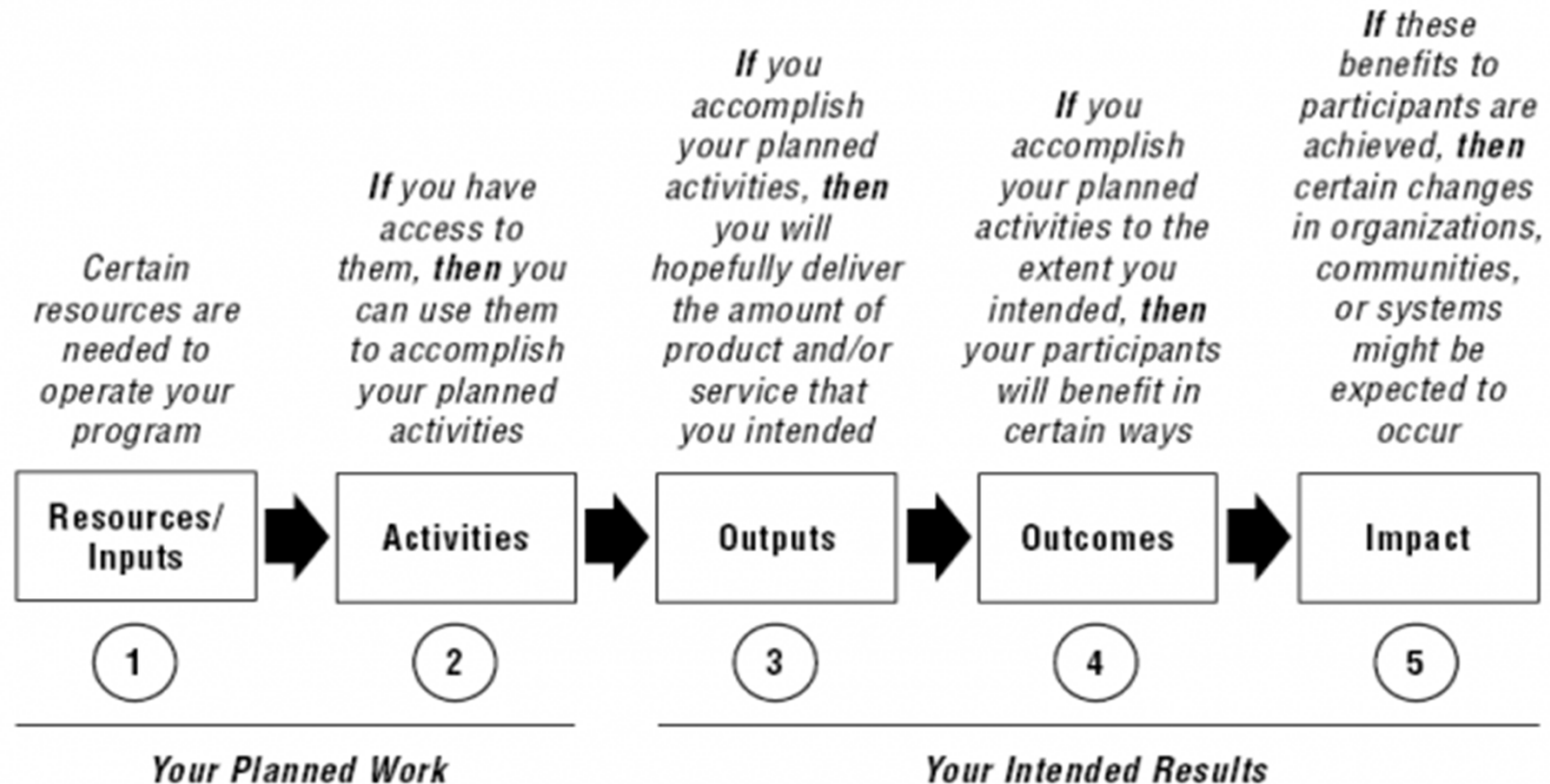
Refresher

A Logic Model is...

- A depiction of a program showing what the program will do and what it is to be accomplished
- A series of “if-then” relationships that, if implemented as intended, lead to the desired outcomes

Developing a logic model: Teaching and training guide © 2008 by the Board of Regents of the University of Wisconsin System. All rights reserved.

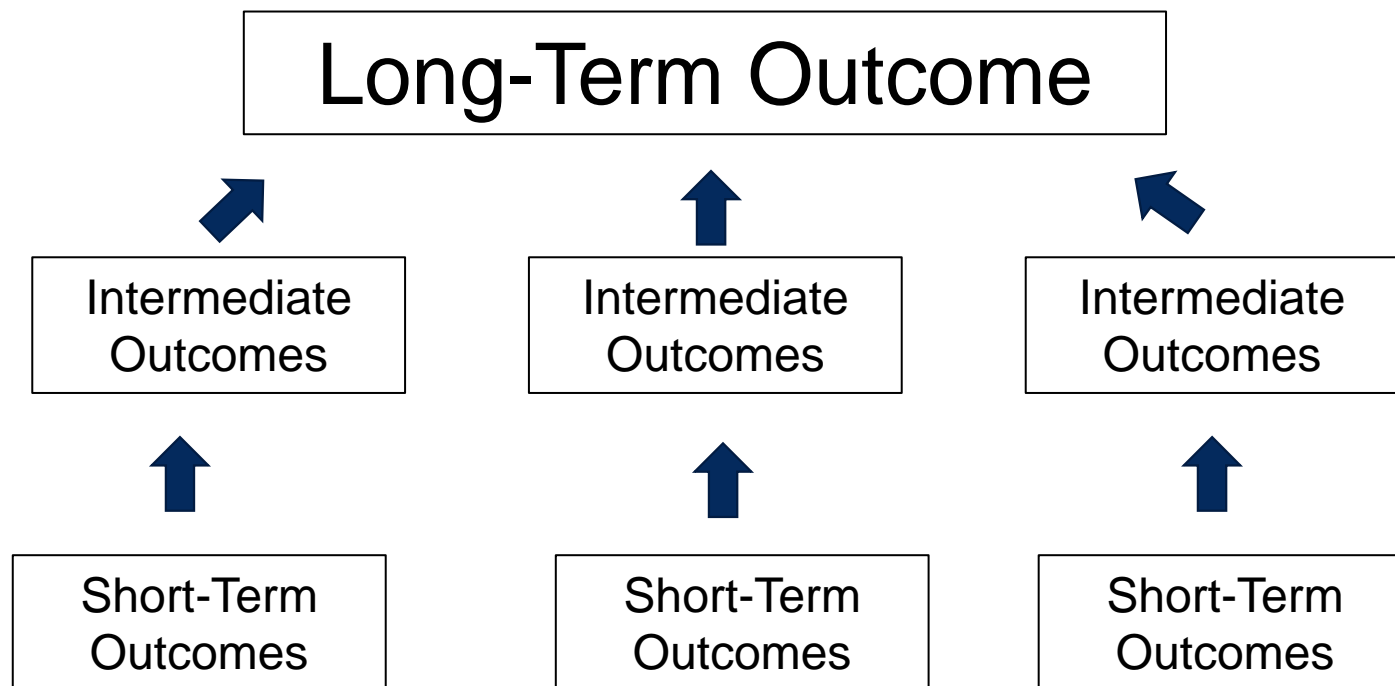
Reading a Logic Model



Theory of Change



Theory of Change



Indicators

Who or what is the target population of change?



How much change has to occur on this indicator for you to claim to have successfully reached the outcome?



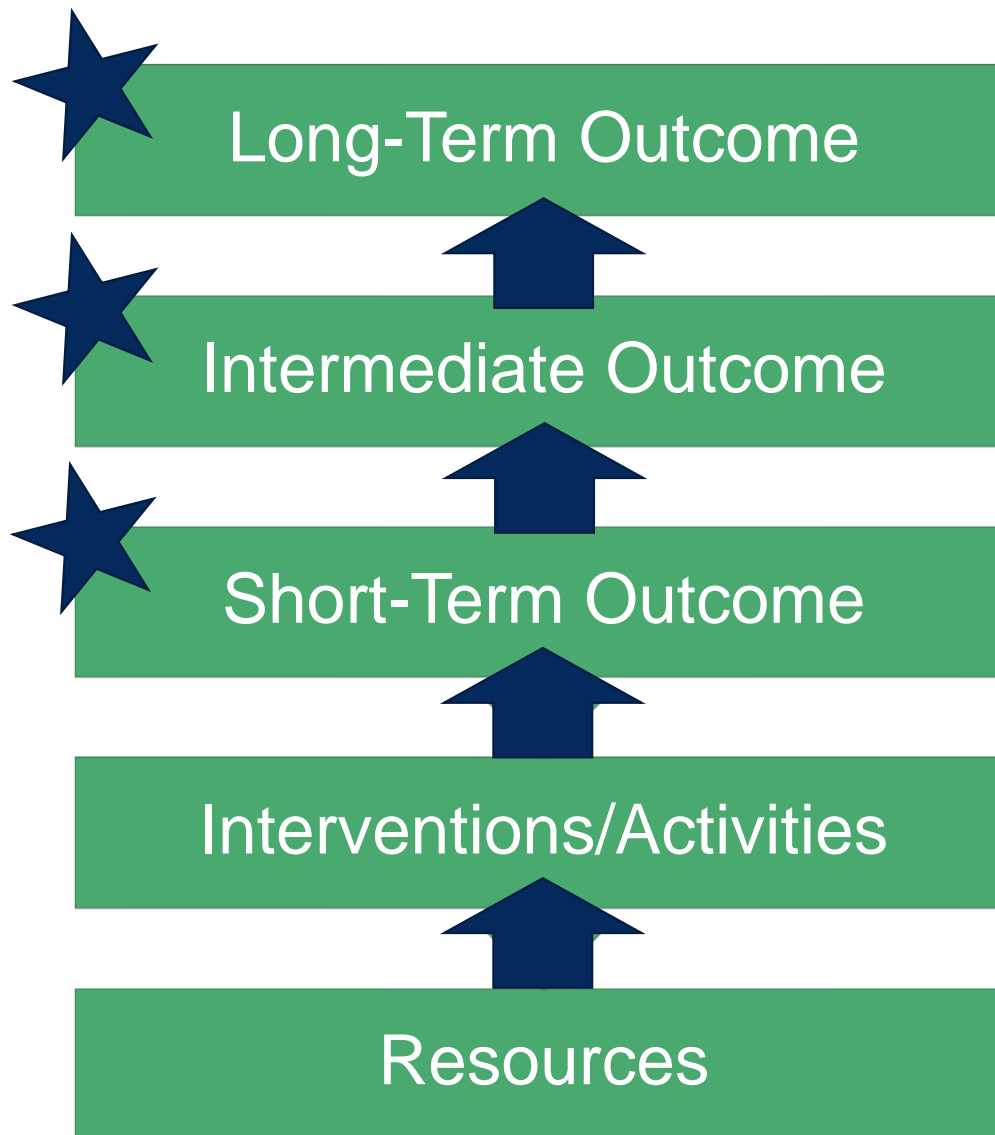
How long will it take to bring about the necessary change in this indicator in the target population?

Interventions and Assumptions



This Photo by Unknown Author is licensed under [CC BY](#)

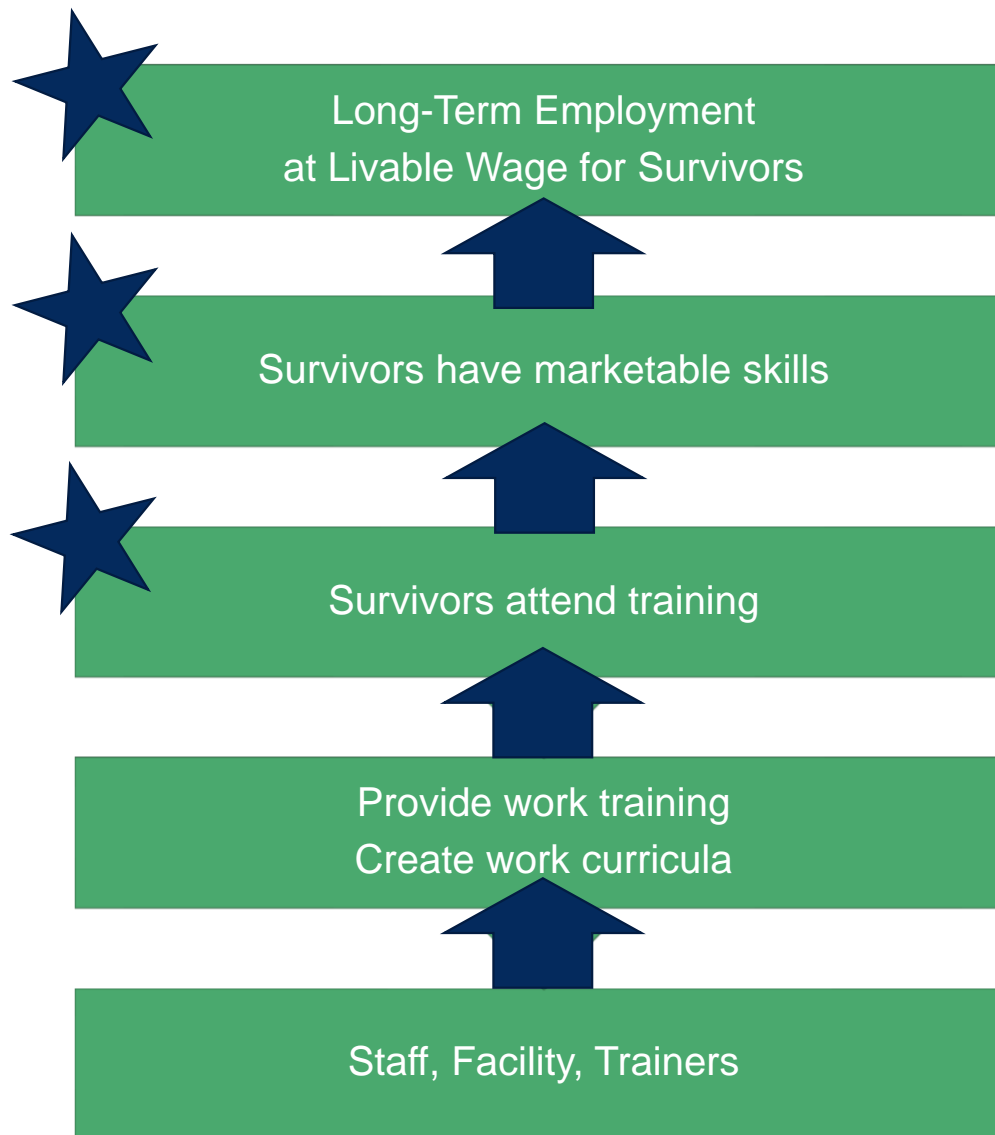
Theory of Change



ASSUMPTIONS

Example

Project
Superwoman



ASSUMPTIONS

Benefits

- Connections between assumptions, interventions and outcomes
- Determine how resources will be used to generate outcomes
- Build consensus of how success will be documented
- Develop a shared understanding of what will be accomplished

How are they different?

Logic Models	Theories of Change
Visual Representation	Critical Thinking
List of Components	Pathway of Change
Descriptive	Explanatory

How to measure outcomes

Tips and Items for Consideration

Slide 20

GL38

Several registrants wanted assistance with determining indicators for outcomes such as well-being and safety.

Gibbes, Laney, 1/6/2021

Outcomes

MOV A
Measuring Outcomes for Victims Assistance

SHORT- AND LONG-TERM OUTCOMES

Subrecipients are expected to implement a standard set of key outcomes to demonstrate they are already collecting and recommend potential areas for enhancing what we know about outcomes for each measure for that period and how many times that question was administered to victims. New measures can be introduced as you wish, but they must be included in the dropdown options.

SECTION 16: Short and Long-term Outcomes

1.) Input each strategic area and goal and then refer to your logic model to determine short- and long-term outcomes.
 2.) For each outcome, determine the focus of it (clients, perception of staff or quality of services) from Outcome Type and this dropdown menu.
 3.) In the Question column write the question you are asking staff, clients or community members to determine if your organization is achieving the outcome.
 4.) Enter your predicted Milestones for each measure to show what you plan to achieve by the end of each reporting period.

Strategic Area The strategic area related to the outcomes.	Outcome Type Who/What is the outcome focused on?	Category Main themes of outcomes.	Question Include the full text for the questions that are administered to assess outcomes.	Reporting Period 1	Reporting Period 2
Victim Outcome	Example: Improve Well-Being	As a result of this program, I am more confident in my decisions	Example: Improve Well-Being As a result of this program, I am more confident in my decisions	Response Rate Overall: 8% Response Rate Staff: 100%	Response Rate Overall: 30% Response Rate Staff: #DIV/0!

#3) DATA ENTRY TAB

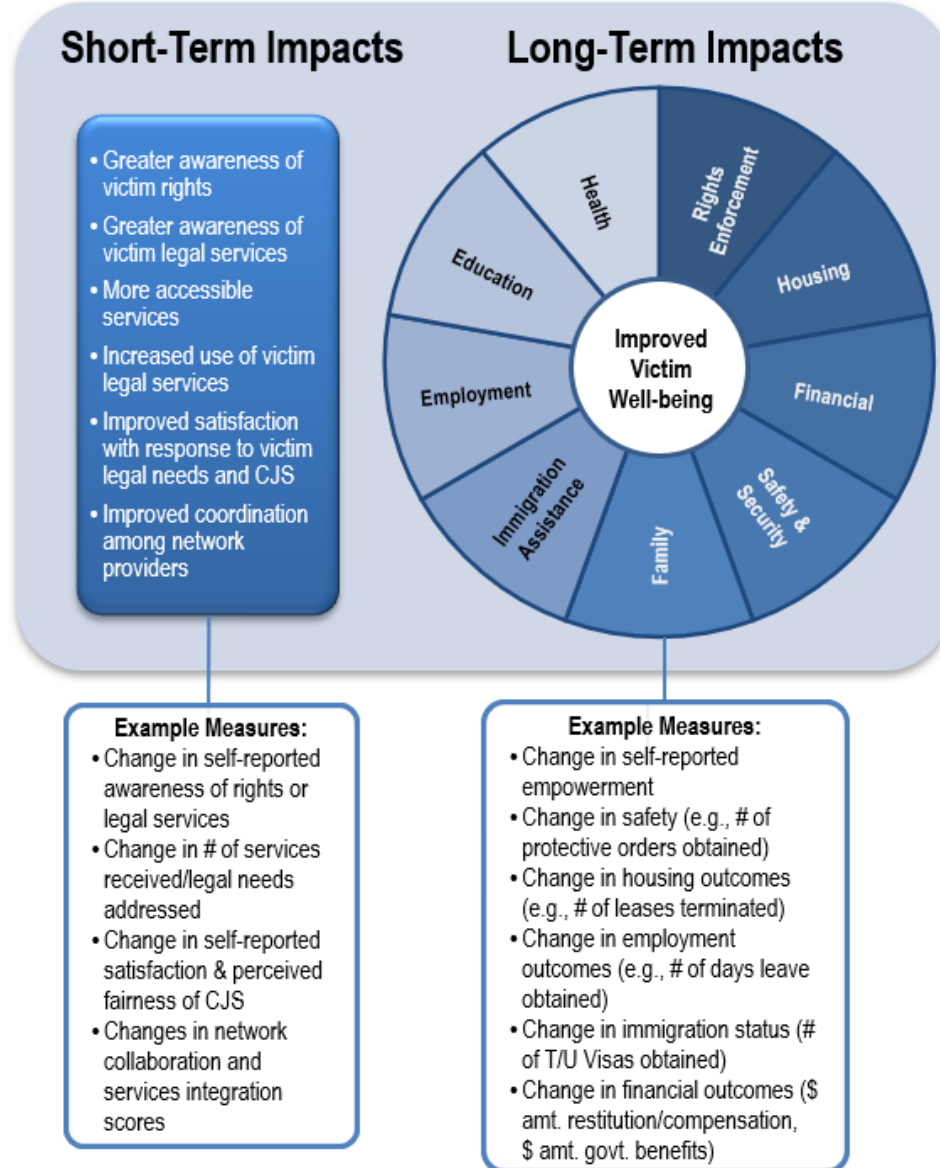
Outcome Measurement Tool (OMT)
MA - Victim Witness Assistance Board
@hkl.com or call toll-free 709-251-0368.

Data Collection

Example Measures

- Physical and Emotional Needs Met: “My family has a better understanding of child abuse/violent death and its effects on victims and their families/surviving family members.”
- Symptoms Reduced: “My child’s abuse/loss-related symptoms, such as sleeplessness, nervousness, fear, anxiety or acting out are less severe since our involvement with this agency.”
- Resolution of a crisis: “I am better able to cope with my situation.”
- Understanding/Participating in the Criminal Justice System: “My family has a better understanding of the legal rights of a victim of child abuse/survivor of crime; I now have a better understanding of how the police, lawyers and courts work.”
- Sense of safety & immediate security: “I know how to create and adapt a safety plan; I feel safer.”
- Reduced isolation: “My family has learned how to contact the sources of help available to us in the community.”
- Life choices: “My family is using the skills we learned to cope with our situation.”
- Improved understanding: “My child understands that changes in our family following the abuse/death are not his/her fault.”

Example Measures



Workshop

Organization #1:

Resources/Inputs	Activities	Outputs	Outcome (Short)	Outcome (Long)

Organization #2:

Resources/Inputs	Activities	Outputs	Outcome (Short)	Outcome (Long)

Organization #3:

Resources/Inputs	Activities	Outputs	Outcome (Short)	Outcome (Long)

Questions?



Evaluation QR Code

Upping Your Logic Model Game

Scan the QR code with your phone to open the survey.



Slide 29

GL31

Need a new QR code

Gibbes, Laney, 1/5/2021

Contact Information

Samantha S. Lowry

*Senior Director of Research and Evaluation
OVC Training and Technical Assistance Center*

Samantha.Lowry@icf.com

Technical Assistance: Contact OVC TTAC at
TTACEval@icf.com

MOVA Website: <https://www.mass.gov/funding-and-grants-management>

OVC TTAC Website: <https://www.ovcttac.gov/>