

Jeffrey's Ledge Sampling Bold Aug. 2011

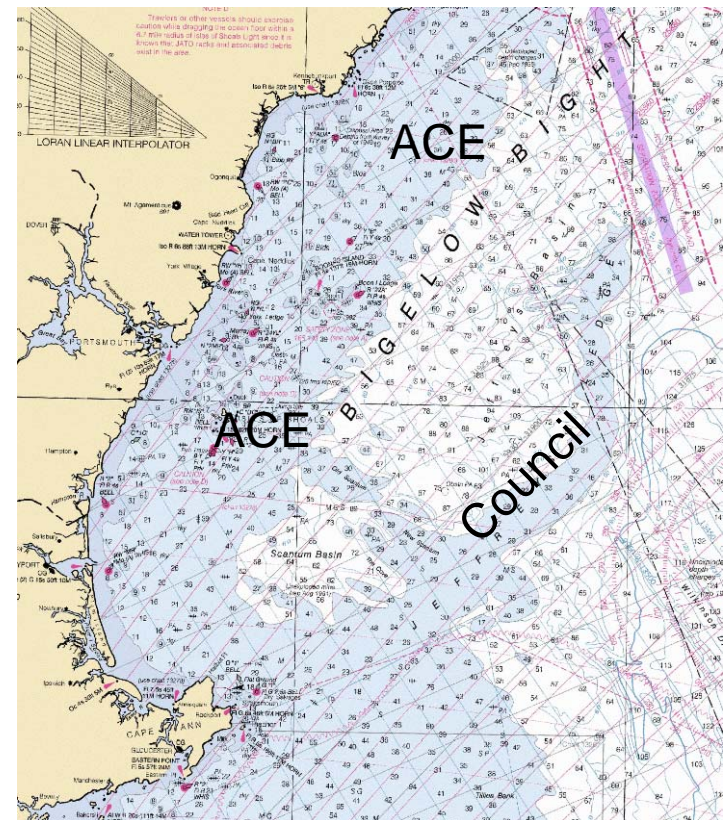
Doug Grout's idea

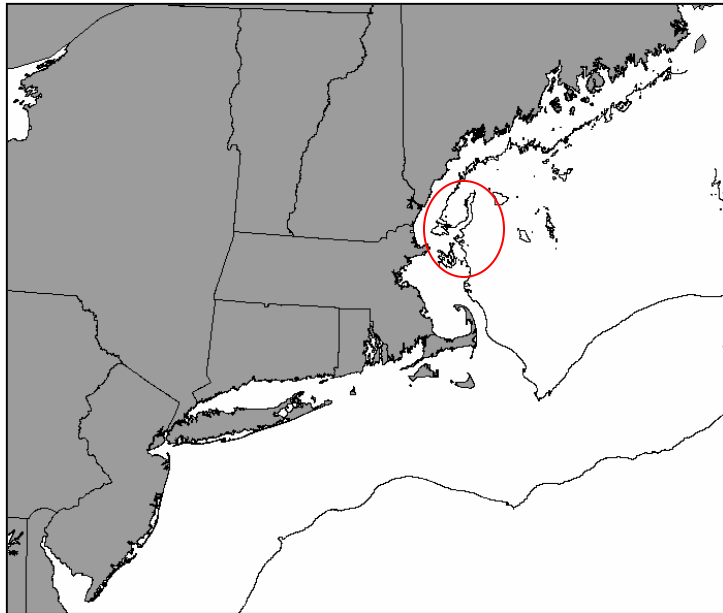
EPA doing water quality work in GOM, had a few extra cruise days. Agreed to support Army Corps studies of offshore disposal sites (not on Jeff Ledge) and NEFMC Jeff Ledge sampling

NH Fish and Game

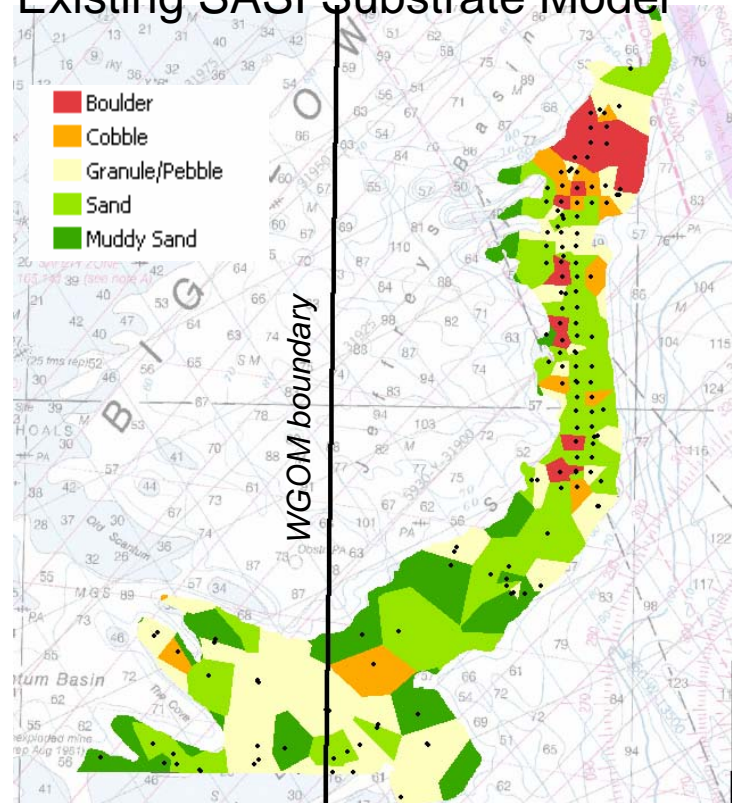
Mass Div of Mar Fish

EPA, Corps and NOAA staff





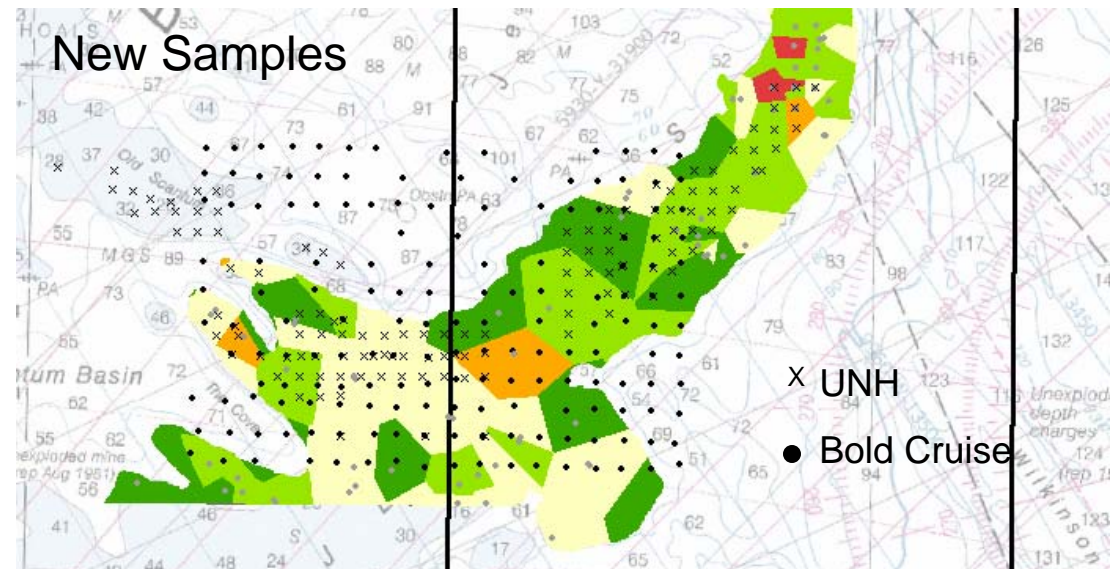
Existing SASI Substrate Model



Sampling in central portion of the ledge is sparse.

Area has high value to fishing industry.

Goal: incorporate existing UNH data, take more samples

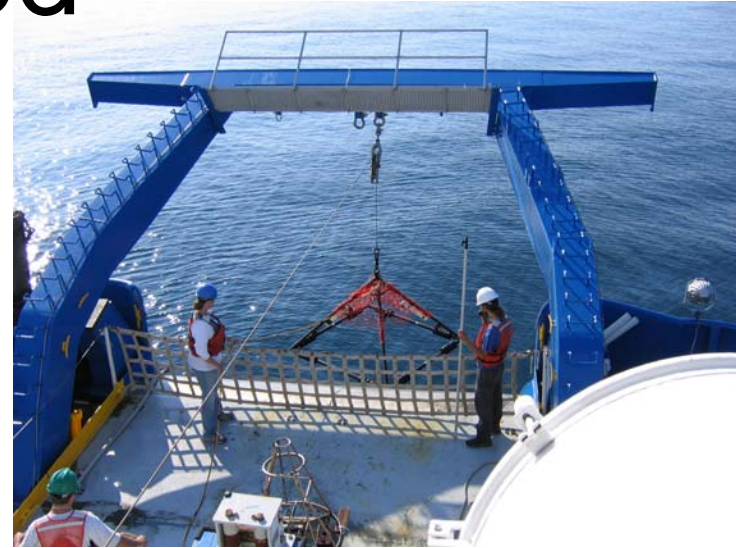


Method

- SMAST video pyramid with 2 videos and a GoPro still camera
- Processed by MA DMF with SASI substrate method (most frequently occurring largest grain size from 4 images per station)

Total of 126 stations sampled,
504 images analyzed.

UNH has an additional 169
stations (not incorporated yet).



Frame, video camera, and lights borrowed from UMass Dartmouth, School for Marine Science and Technology

HD Surf HERO

1080p | 960p | 720p | 5 MP | 60FPS | 30FPS

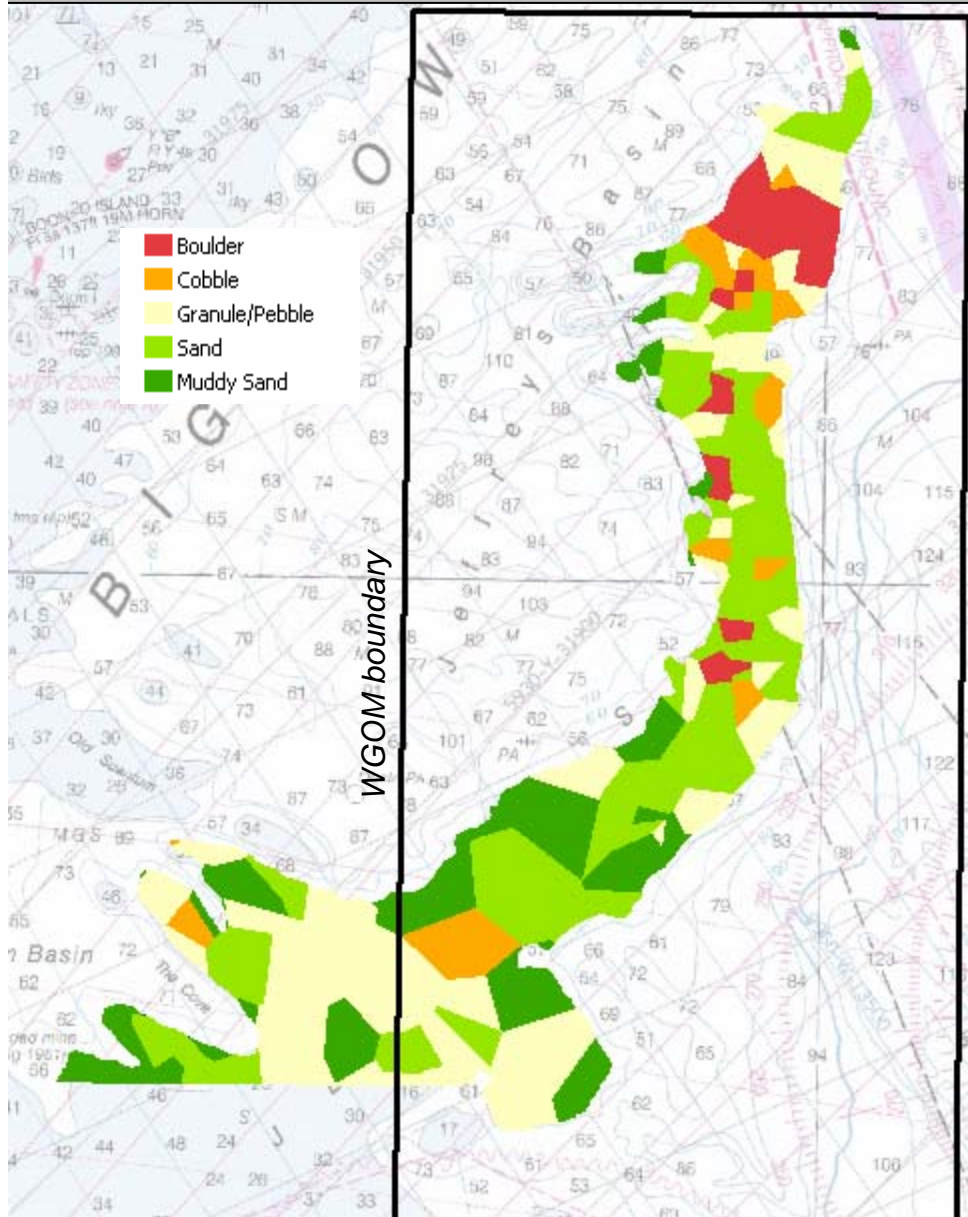
What's Included:

HD HERO Camera
Waterproof Housing
Surf HERO Mount
FCS™ Plug Mount
Leash
Assorted Mounting
Hardware + Cables



Off-the-shelf action camera used in interval shooting mode for still images

BEFORE



AFTER

