

Appendix B – Property Maps

55. Jug End State Reservation and Wildlife Management Area – Reserves, Intensive Use and

Active Management Areas

56. Jug End State Reservation and Wildlife Management Area – Hydrology Buffers

57. Jug End State Reservation and Wildlife Management Area – Road and Trail

Corridors

58. Jug End State Reservation and Wildlife Management Area – Rare Species

59. Jug End State Reservation and Wildlife Management Area – Vegetation

60. Jug End State Reservation and Wildlife Management Area – Vegetation with Resource

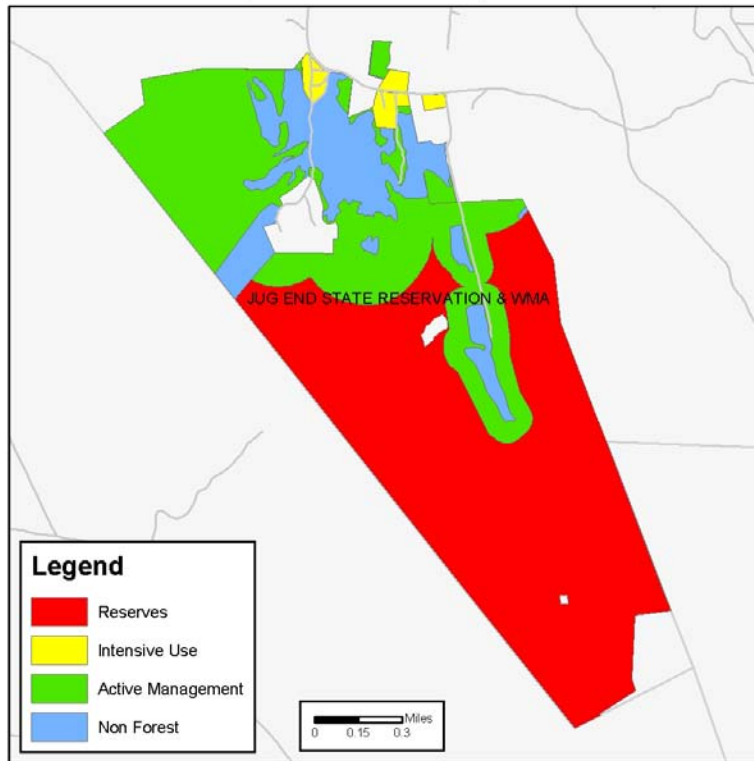
Overlays

61. Jug End State Reservation and Wildlife Management Area – Prime Soils

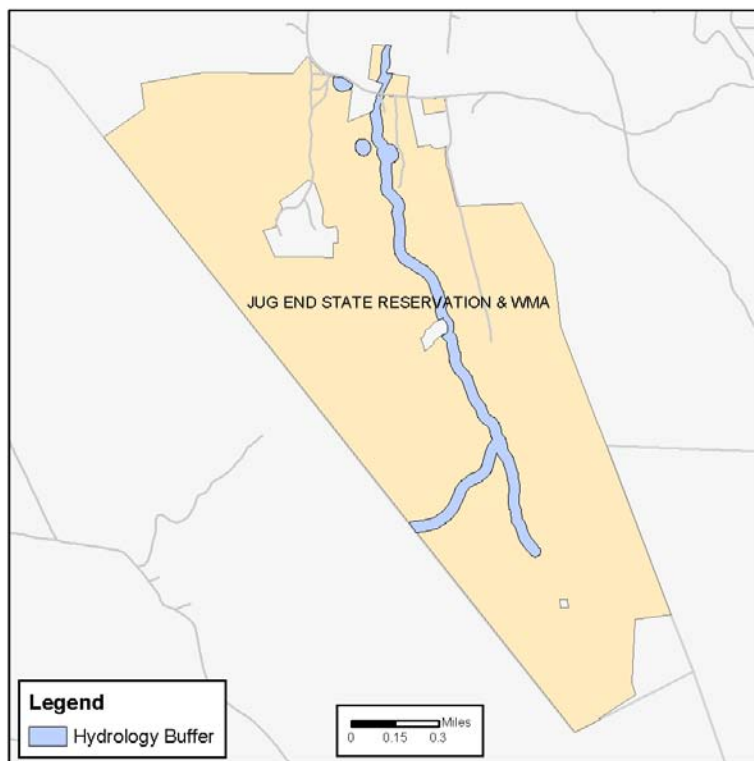
62. Jug End State Reservation and Wildlife Management Area – Archeologically Sensitive Areas

63. Jug End State Reservation and Wildlife Management Area – Potential Timber Harvests

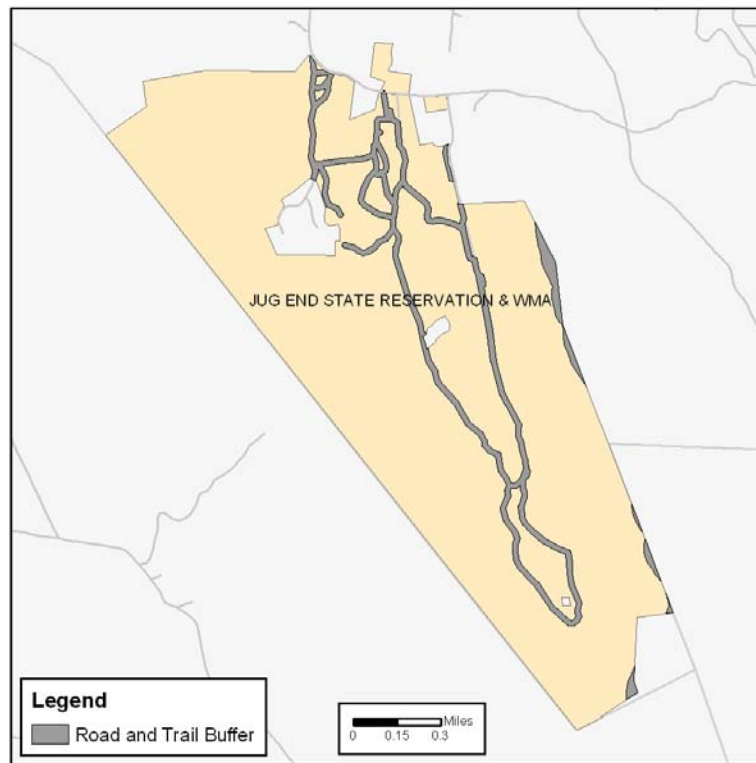
Jug End State Reservation & WMA
Reserves, Intensive Use and Active Management Areas



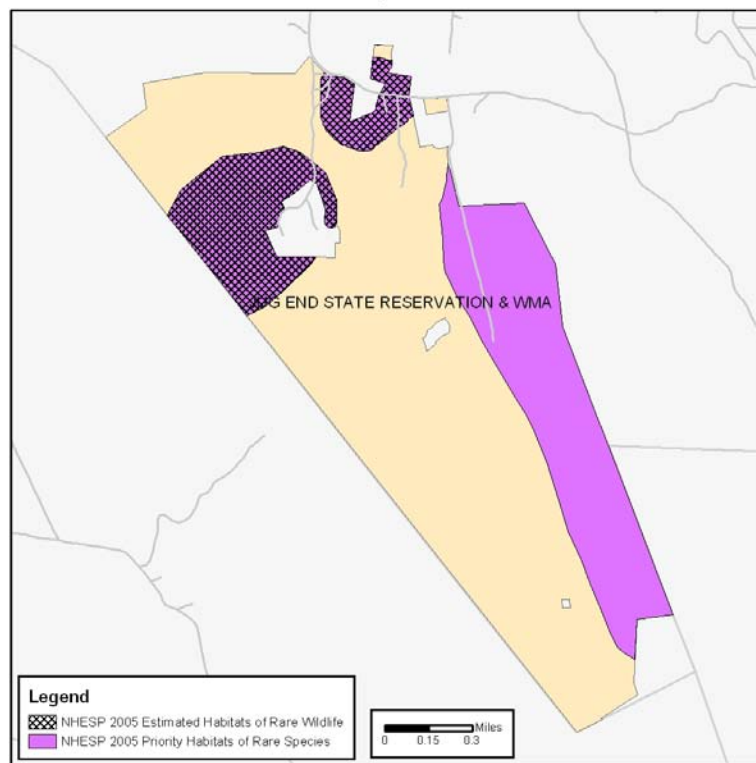
Jug End State Reservation & WMA
100' Hydrology Buffers



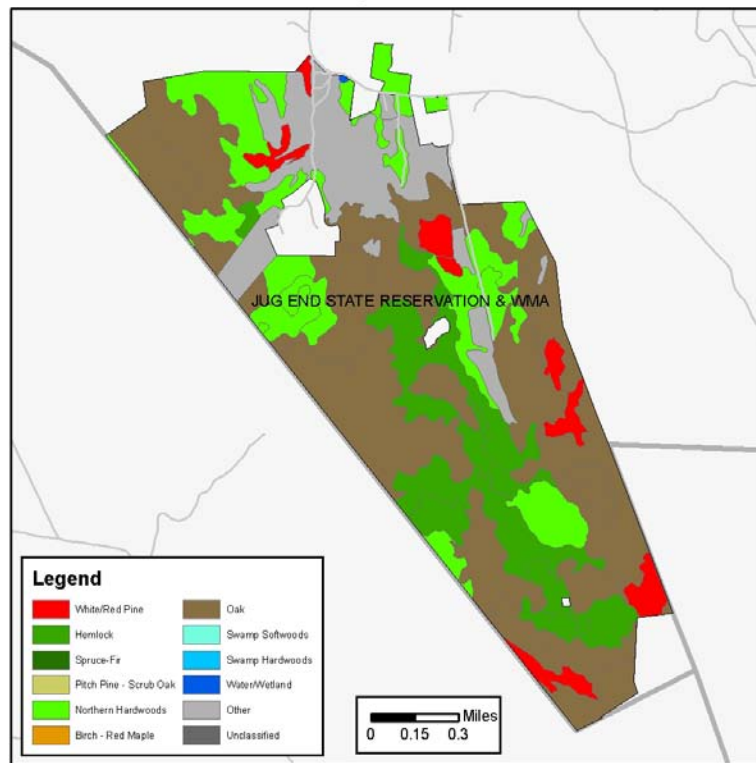
Jug End State Reservation & WMA
50' Road and Trail Buffers



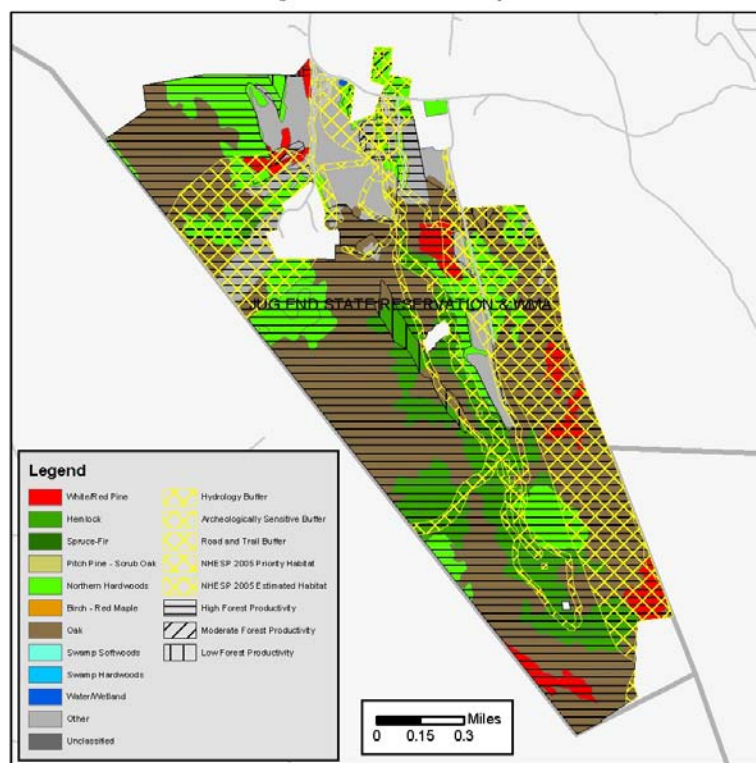
Jug End State Reservation & WMA
Rare Species



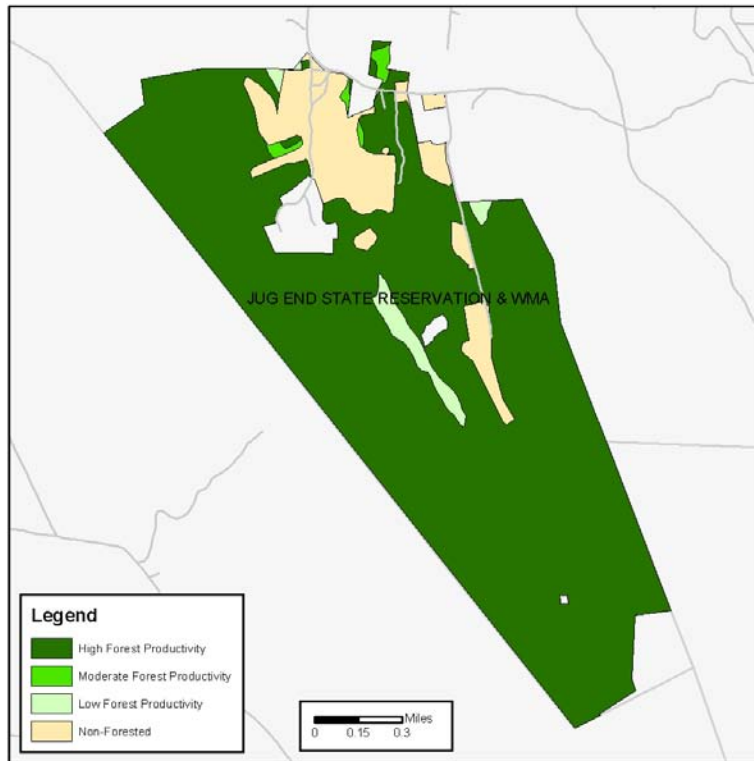
Jug End State Reservation & WMA
Vegetation



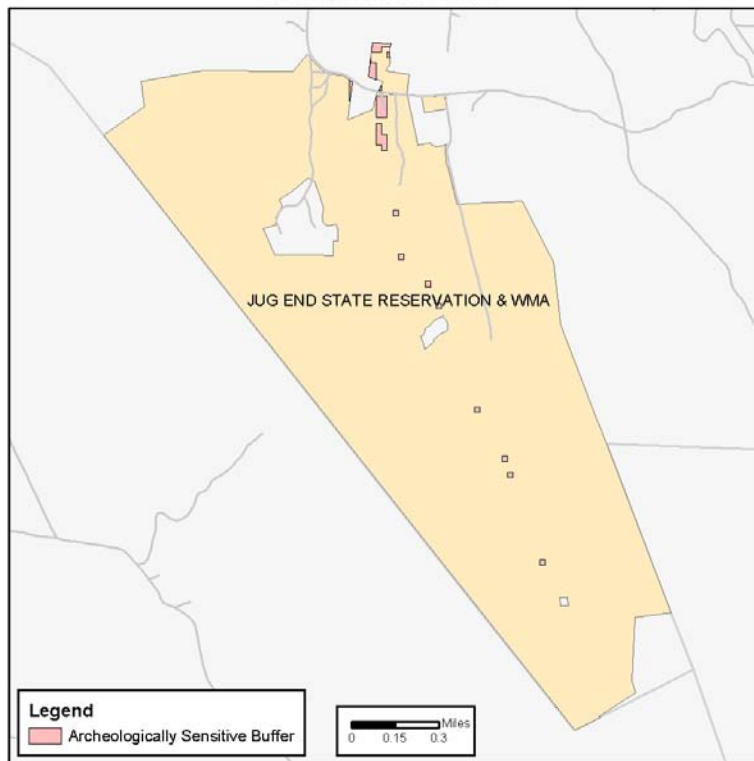
Jug End State Reservation & WMA
Vegetation With Resource Overlays



Jug End State Reservation & WMA
Prime Soils



Jug End State Reservation & WMA
Archeologically Sensitive Buffers



Jug End State Reservation and WMA - Potential Timber Harvests Within Next 15 Years By Silvicultural Technique

