



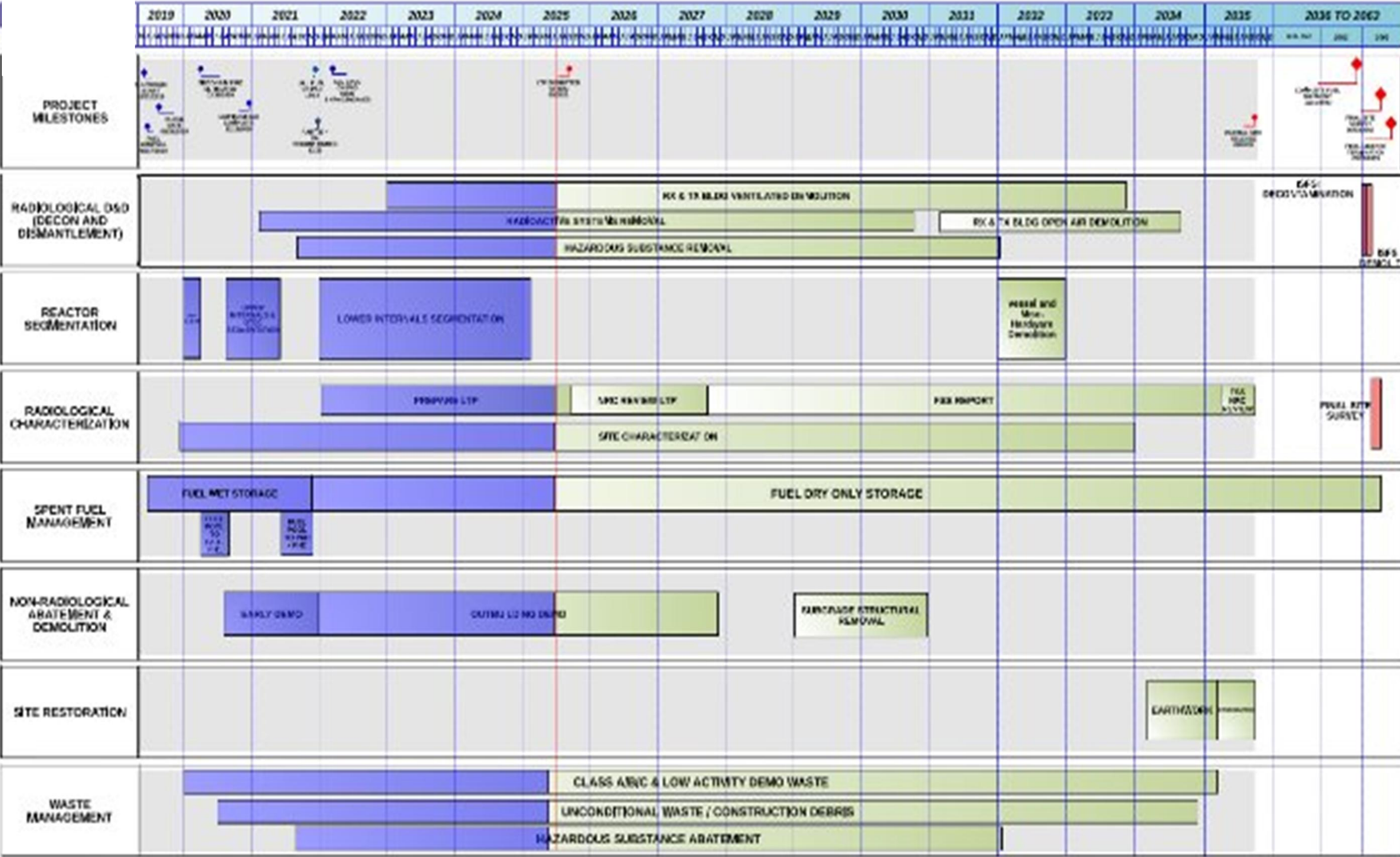
## Pilgrim NDCAP Update



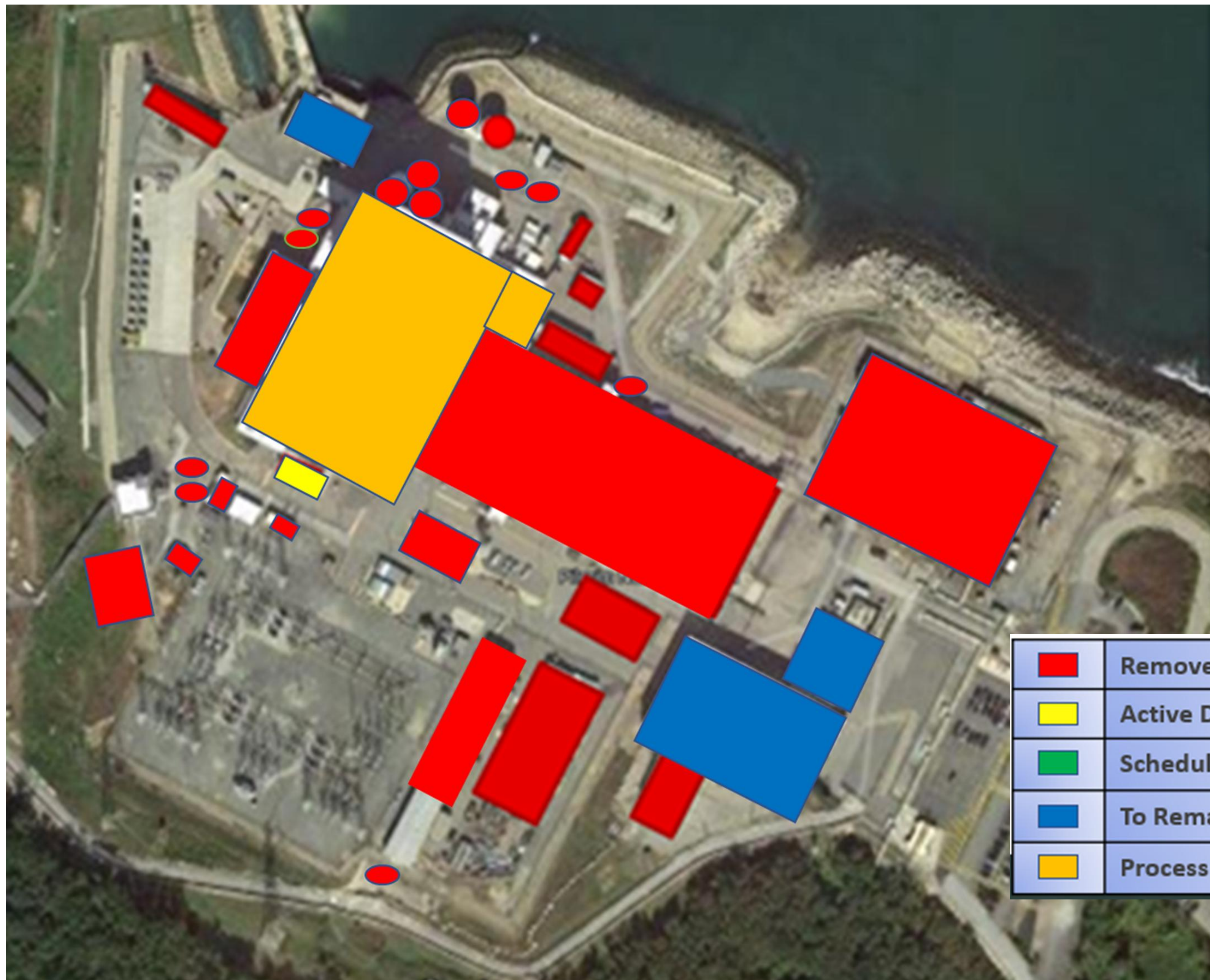
July 28, 2025




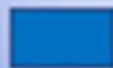



# Pilgrim Decommissioning Project Timeline







	Removed
	Active Demolition
	Scheduled for demo
	To Remain
	Process Buildings



# Ongoing Demolition

## •Gland Seal Condenser



Before

After







# Massachusetts Contingency Plan Actions

Phase II Comprehensive Site Assessment  
Report and Risk Characterization  
submitted April 2025.

- Quarterly sampling
- PERA-3 PCB soil pile removal  
(3rd - 4th Qtr 2025)



14 additional monitoring wells in PERA-3 (non-industrial) area



17 soil borings in the Industrial Area



# Onsite Water Volume Update



- Water volume onsite effective 7/17/25  $\approx$  831,375 gallons
- Heaters in Spent Fuel Pool and Reactor Cavity remain de-energized
- Drained  $\approx$  361,000 gallons from the reactor cavity and dryer separator pit to torus in June
- Post drain down torus water samples taken 7/9/25 awaiting results

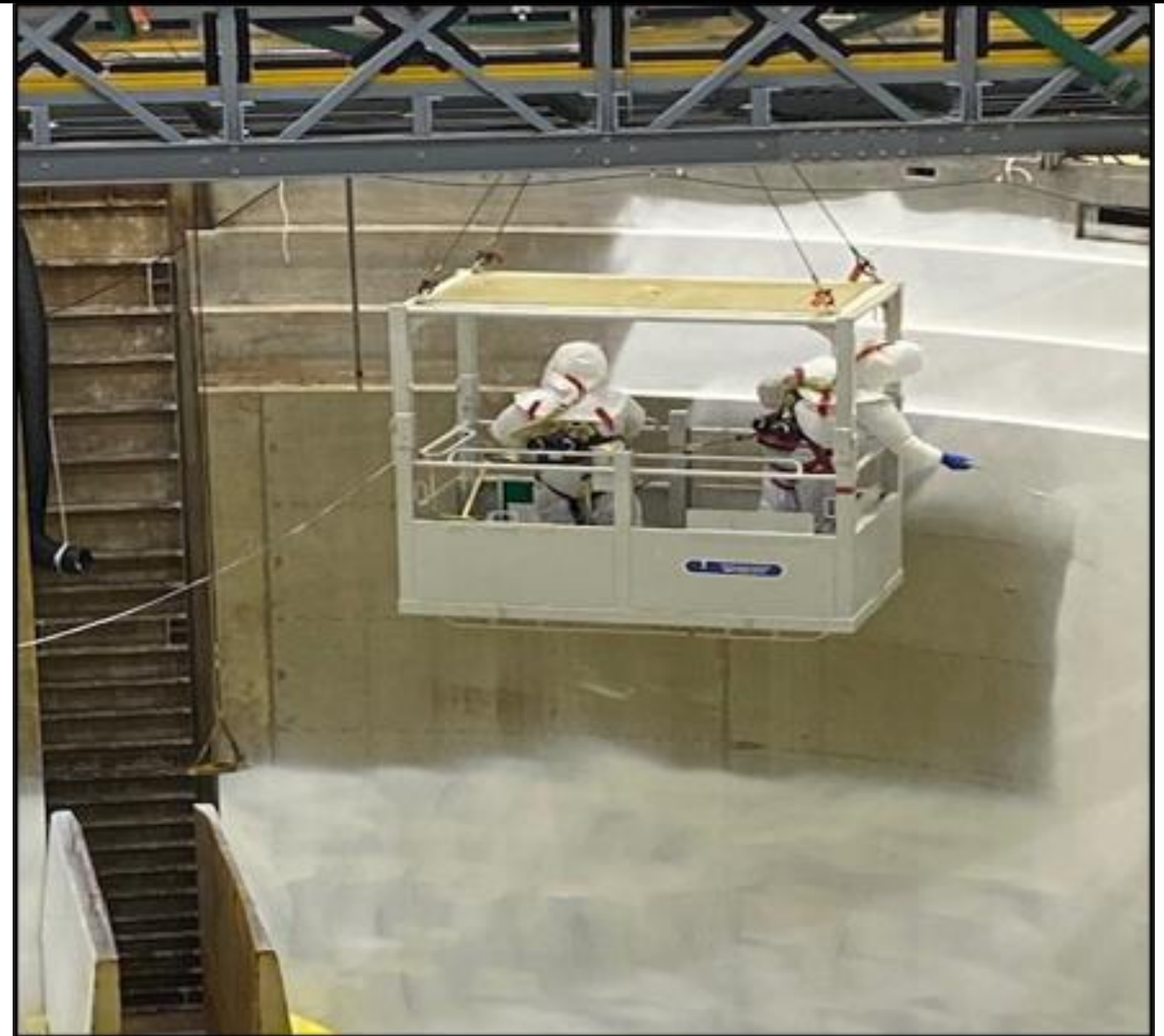
## Reactor Segmentation Demobilization



- Removal of equipment from DSP and Cavity- Complete
- Reactor cavity drain down – Complete
- DSP drain down - Complete
- Detailed radiological surveys – Complete
- Application of encapsulant to wetted surfaces - Complete



7



# Regulatory Update



- NRC 2<sup>nd</sup> Qtr 2025 Inspection Results no findings of more than minor significance. Inspection Scope included:
  1. Problem Identification and Resolution
  2. Decommissioning operations
  3. Occupational radiation exposure
  4. Solid radioactive waste management and transportation
- License Termination Plan submission scheduled 9/24/25



# Site Source Term Reduction



Calendar Year	Volume (CF)	Activity (Ci)
2019*	11,300	225
2020	8,410	7
2021	61,100	870
2022	87,100	383
2023	71,159	329
2024	39,941	96
2025	25,545	644
2019-2024 (to date) Totals	304,555	2,554

Rounded values for radioactive materials shipped for disposal



\*Includes a small quantity of waste shipped during the last operating cycle