

# MA Interconnection Automation

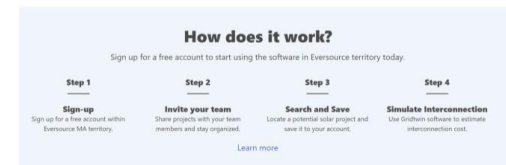
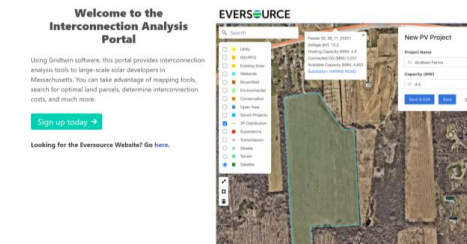
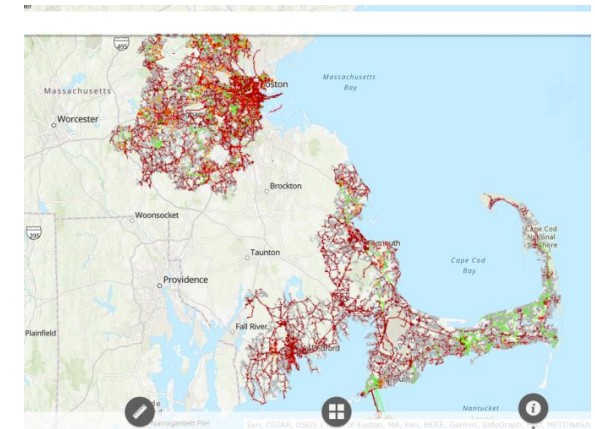
External Overview

06/05/2023

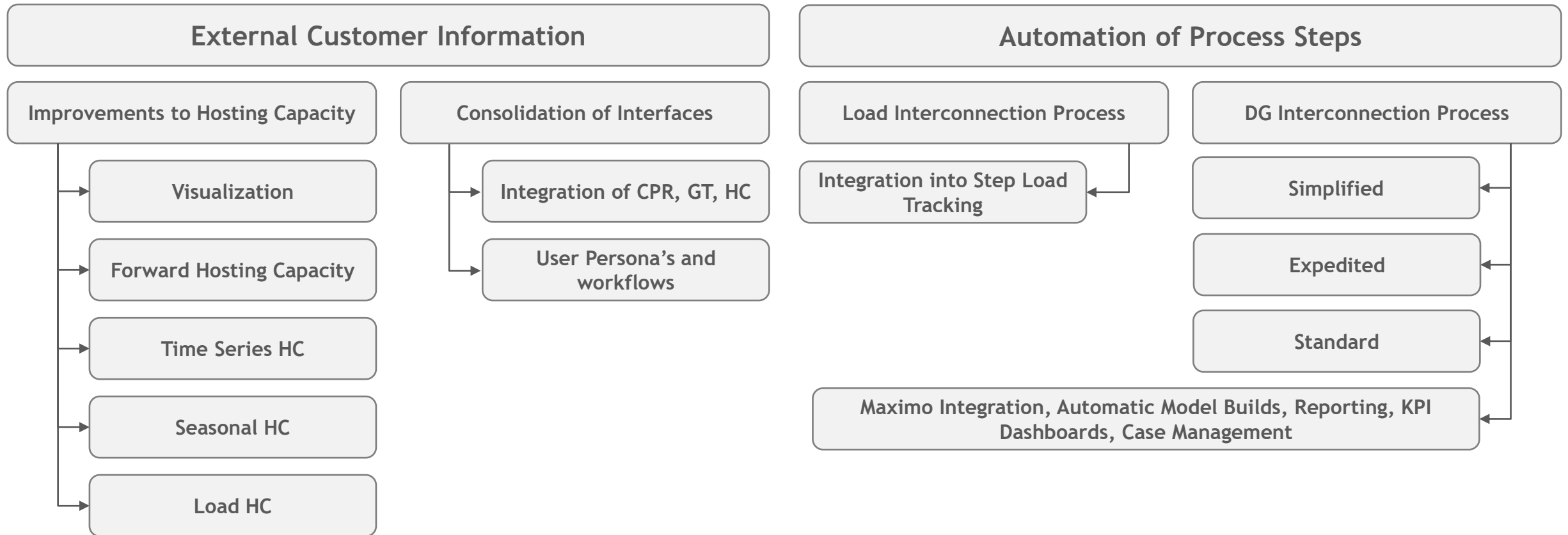
## Interconnection Automation – Overview

### Challenges

- The Company currently provides four (4) different tools/websites for developers to use and guide them through their interconnection process
- Workload of DG interconnections is up more than 200% in CT and NH with MA being slammed as is.
- Developers and regulators are demanding “dynamic” interconnection of resources
- Hosting Capacity data does not show future HC nor can it be used to evaluate storage or load interconnections
- Developers of battery storage asking for time series
- Promises made to the DPU

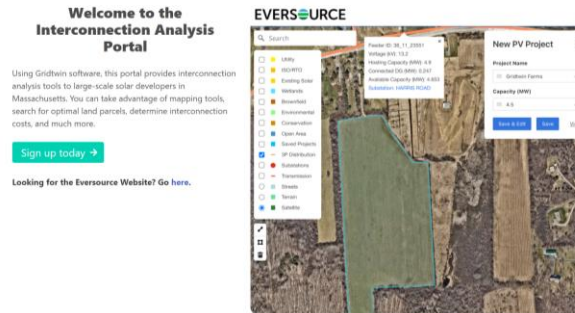
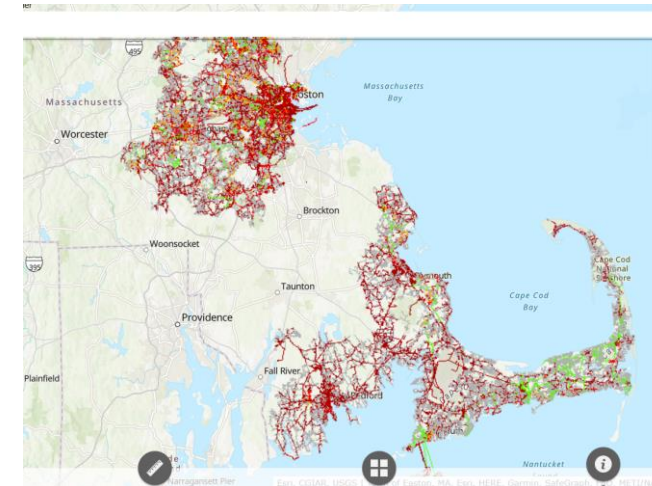


## Key Work Areas



## External Interface Consolidation - Key requirements and Objectives

- Primary navigation shall happen on a map-based interface
- Map shall provide the user a variety of different layers
- Simulation Mode with User accounts
- Application process accessible from maps
- Updated visualization of data and reporting
- Integration between existing applications and data



### How does it work?

Sign up for a free account to start using the software in Eversource territory today.

#### Step 1

##### Sign-up

Sign up for a free account within Eversource MA territory.

#### Step 2

##### Invite your team

Share projects with your team members and stay organized.

#### Step 3

##### Search and Save

Locate a potential solar project and save it to your account.

#### Step 4

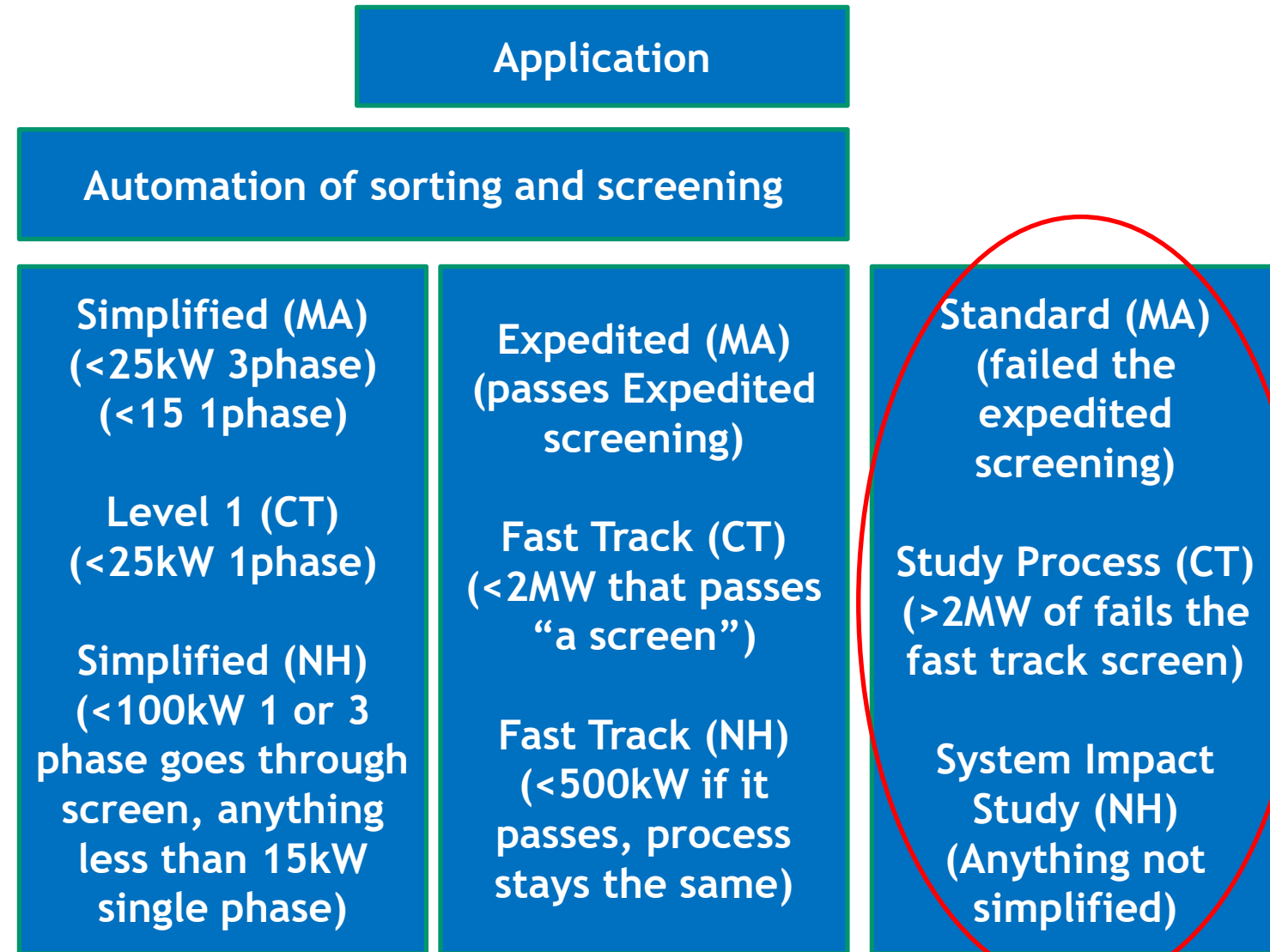
##### Simulate Interconnection

Use Gridwin software to estimate interconnection cost.

[Learn more](#)

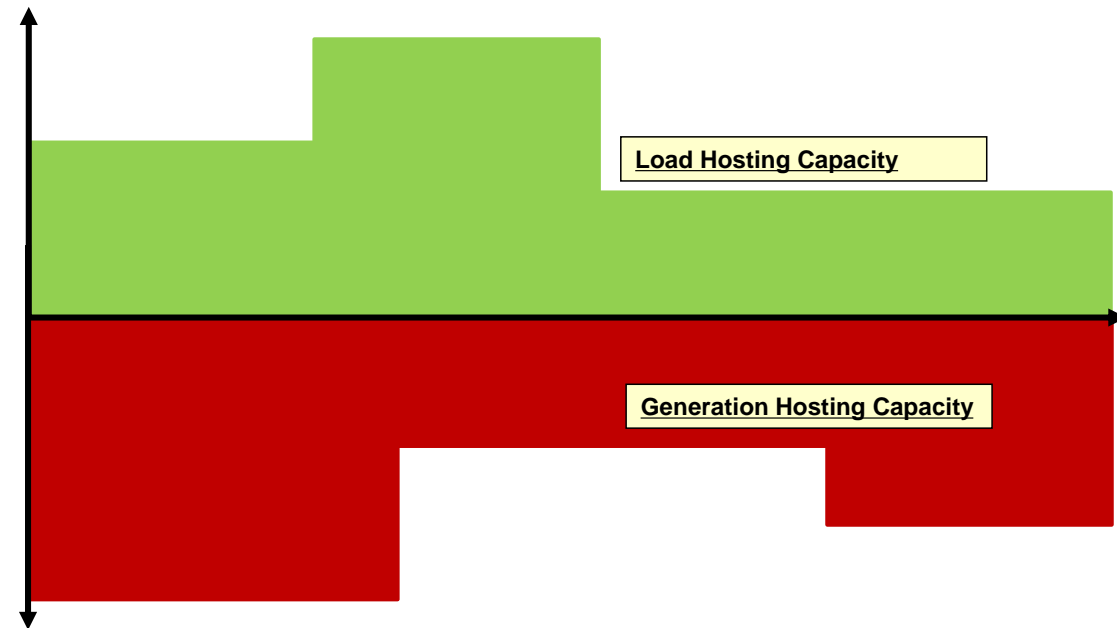
## Automatic Interconnection - Key requirements and Objectives

- Automation can be applied to DER that are BTM and <1 MW
- Automation should consider project with a valid queue. Queue must be tracked in Power clerks
- Validation of application data is complete
- Customer notification of agreement and study agreement
- Canned messages that go to the customer



## Hosting Capacity (HC) - Key requirements and Objectives

- Load and DG HC
- Seasonal HC
- Time Series HC
- Forward HC
- Visualization of HC
- Data cleanup



Concept of Time Series, Load and Generation Hosting Capacity